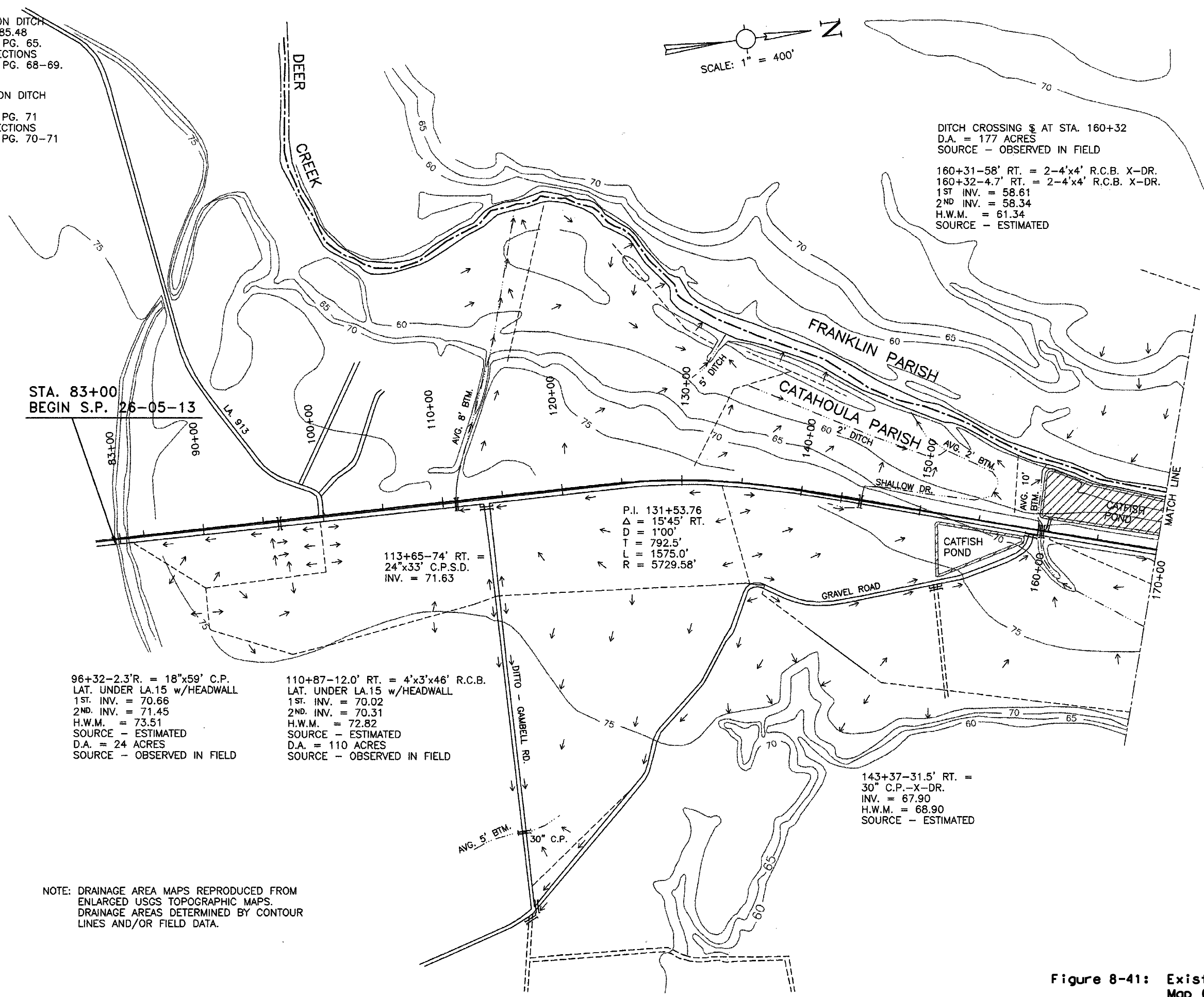


ssplot date and plot times

sslms is the pathname including directory path and design file names

NOTE:
FOR ALIGN. & TOPO ON DITCH
RT. & LT. STA. 159+85.48
SEE BOOK 159-377, PG. 65.
FOR PROFILE & X-SECTIONS
SEE BOOK 158-951, PG. 68-69.

NOTE:
FOR ALIGN. & TOPO ON DITCH
LT. STA. 111+07.52
SEE BOOK 159-377, PG. 71
FOR PROFILE & X-SECTIONS
SEE BOOK 158-951, PG. 70-71



NOTE: DRAINAGE AREA MAPS REPRODUCED FROM ENLARGED USGS TOPOGRAPHIC MAPS. DRAINAGE AREAS DETERMINED BY CONTOUR LINES AND/OR FIELD DATA.

SHEET NUMBER	33
DESIGNED A.D.T.	CATHOULA, ERAMSLIN
DRAWN	
CHECKED	
DATE	26-05-13
PROJECT	ROAD DESIGN
STATE	LA.
PROJECT	26-05-13-26-06-93
DATE	DECEMBER, 1988
SHEET	SHT. 1 OF 4
NO.	
DATE	
REVISION DESCRIPTION	
BY	

EXISTING DRAINAGE MAP

ROAD DESIGN

Figure 8-41: Existing Drainage Map (Rural)