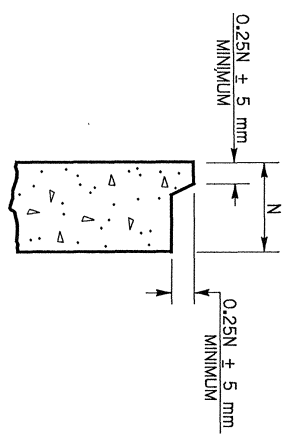
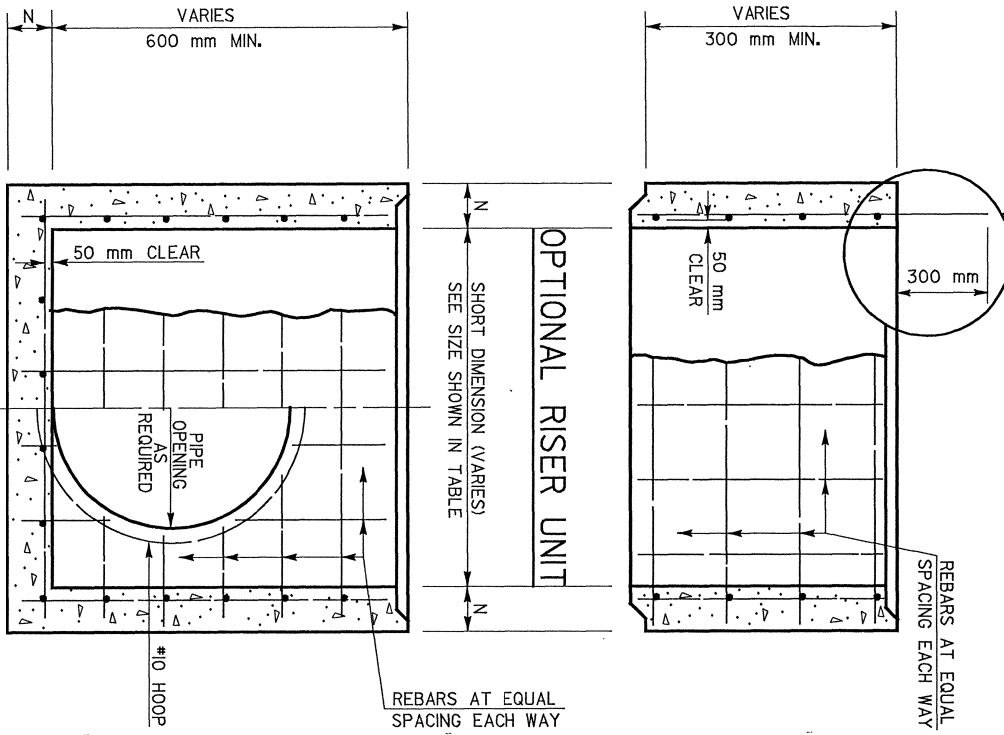


JOINT DETAIL

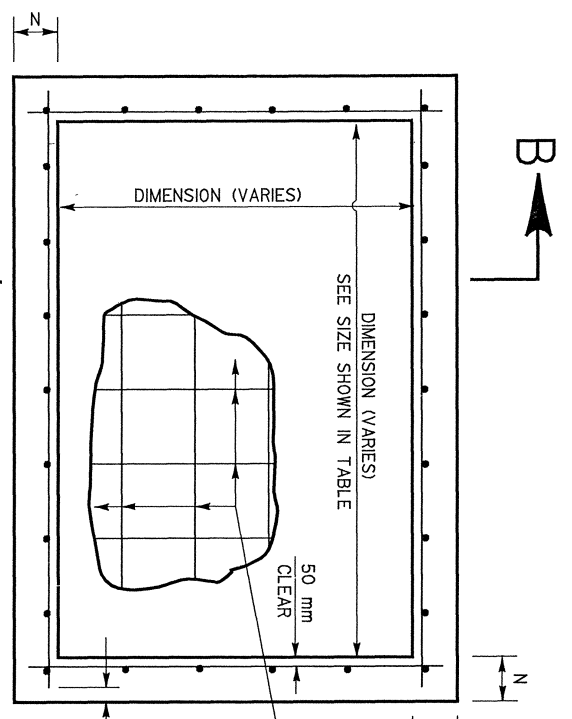


SEE GENERAL NOTE NO.7



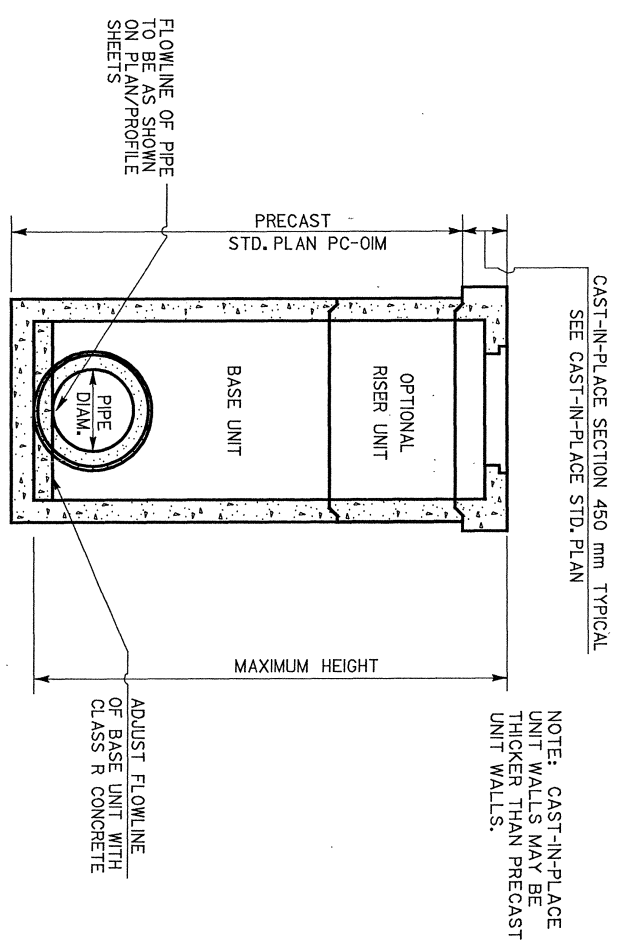
SECTION B-B

PLAN



END OF BAR CLEARANCE 25 mm MIN. & 50 mm MAX. IF BARS ARE CONTINUOUS AND BENT AT CORNERS, END OF BAR CLEARANCE DOES NOT APPLY.

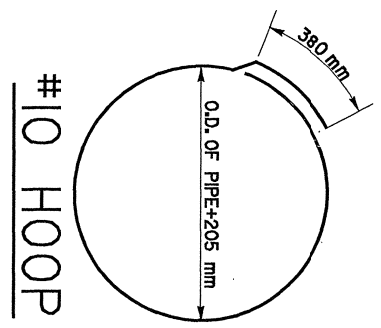
TYPICAL COMPOSITE STRUCTURE



PRECAST UNITS FOR CATCH BASINS & MANHOLES

MAX. HT. m	N	1220 mm MAX. DIMENSION		1830 mm MAX. DIMENSION		2440 mm MAX. DIMENSION		3050 mm MAX. DIMENSION		
		BAR SIZE	SPAC. * mm	As mm ² /m	BAR SIZE	SPAC. * mm	As mm ² /m	BAR SIZE	SPAC. * mm	As mm ² /m
2.4	100	10	155	635	10	155	635	15	210	931
2.4	150	10	235	423	15	155	635	15	135	1439
4.2	150	10	175	571	15	235	847	15	125	1566
6.1	150	10	135	720	15	175	1122			

* OTHER SIZES ARE ACCEPTABLE AS LONG AS THE DIMENSIONS DO NOT EXCEED THE MAXIMUM DIMENSIONS.
 * BAR SPACING APPLIES TO BOTH DIRECTIONS AND AT ALL LOCATIONS.
 * BAR SIZES AND SPACING MAY DIFFER FROM VALUES SHOWN, BUT THE AREA OF STEEL (As) SHALL BE EQUAL TO OR GREATER THAN VALUE SHOWN, AND BAR SPACING SHALL NOT EXCEED 305 mm. THE AREA OF STEEL (As) MAY BE PROVIDED WITH WELDED STEEL WIRE FABRIC.
 THE AREA OF STEEL PROVIDED BY THE RECOMMENDED BAR SIZES AND SPACING SHOWN IN THE TABLE MAY EXCEED THE REQUIRED AS.



- GENERAL NOTES**
- 1) THESE PRECAST UNITS ARE TO BE USED AS THE LOWER PORTION OF A COMPOSITE STRUCTURE. THE CAST-IN-PLACE FINISHING DETAILS ARE SHOWN ON OTHER STANDARD PLANS.
 - 2) CONCRETE SHALL ATTAIN A MINIMUM COMPRESSIVE STRENGTH OF 27.5 MPa BEFORE ACCEPTANCE & SHIPPING OF UNITS. REINFORCING STEEL TO BE GRADE 400, OTHERWISE D.O.T.D. STD. SPECIFICATIONS.
 - 3) PIPE OPENING TO BE FORMED ONLY WHEN REQUIRED. OTHERWISE, WALL SECTION SHALL BE AS SHOWN.
 - 4) PIPE OPENING TO BE O.D. OF PIPE + 100 mm ± 15 mm.
 - 5) PIPE TO BE GROUTED IN AFTER INSTALLATION.
 - 6) JOINTS BETWEEN PRECAST UNITS TO BE SEALED WITH FLEXIBLE PLASTIC GASKET MATERIAL AND WRAPPED WITH A 300 mm WIDTH OF GEOTEXTILE FABRIC (SEE DOTD OPL).
 - 7) JOINT BETWEEN CAST-IN-PLACE SECTION AND PRECAST UNIT TO BE TONGUE AND GROOVE AND SEALED WITH TYPE II GRADE A EPOXY (SEE DOTD OPL) OR FLAT JOINT WITH A MINIMUM OF 300 mm OF NO. 10 BARS AT 450 mm CTRS. (MAX.) EXTENDED ABOVE THE JOINT.

NOTE: ALL DIMENSIONS ARE IN MILLIMETERS UNLESS OTHERWISE NOTED.

DESIGNED CHECKED	PAA	HYDRAULICS SECTION		PRECAST CATCH BASINS AND MANHOLES		PARISH	
DATE						FEDERAL PROJECT	
APPROVED BY CHIEF ENGINEER:	Original Signed by Chief Engineer	DATE:		STANDARD PLAN	PC-O1M	STATE PROJECT	