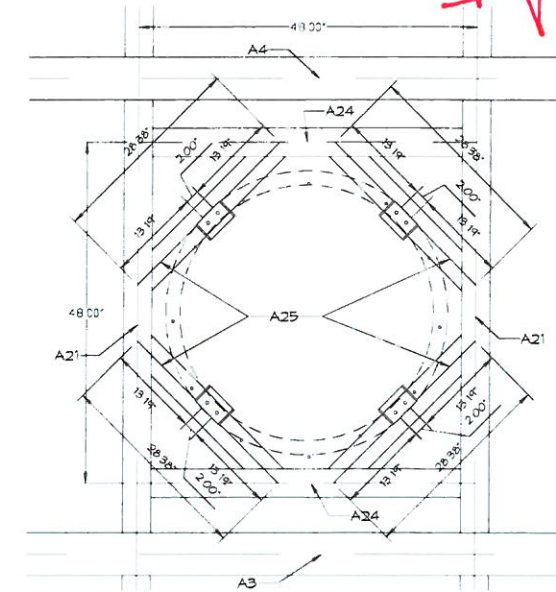
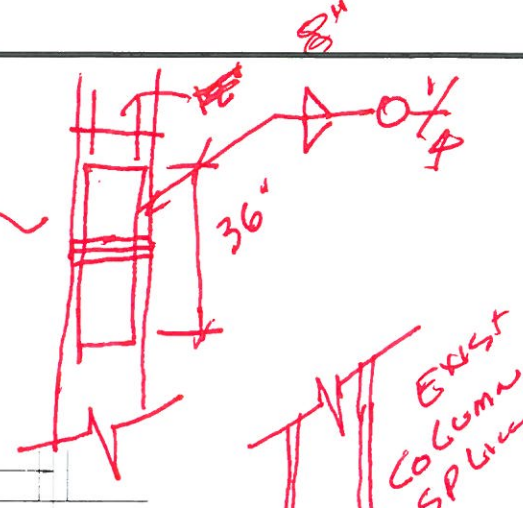
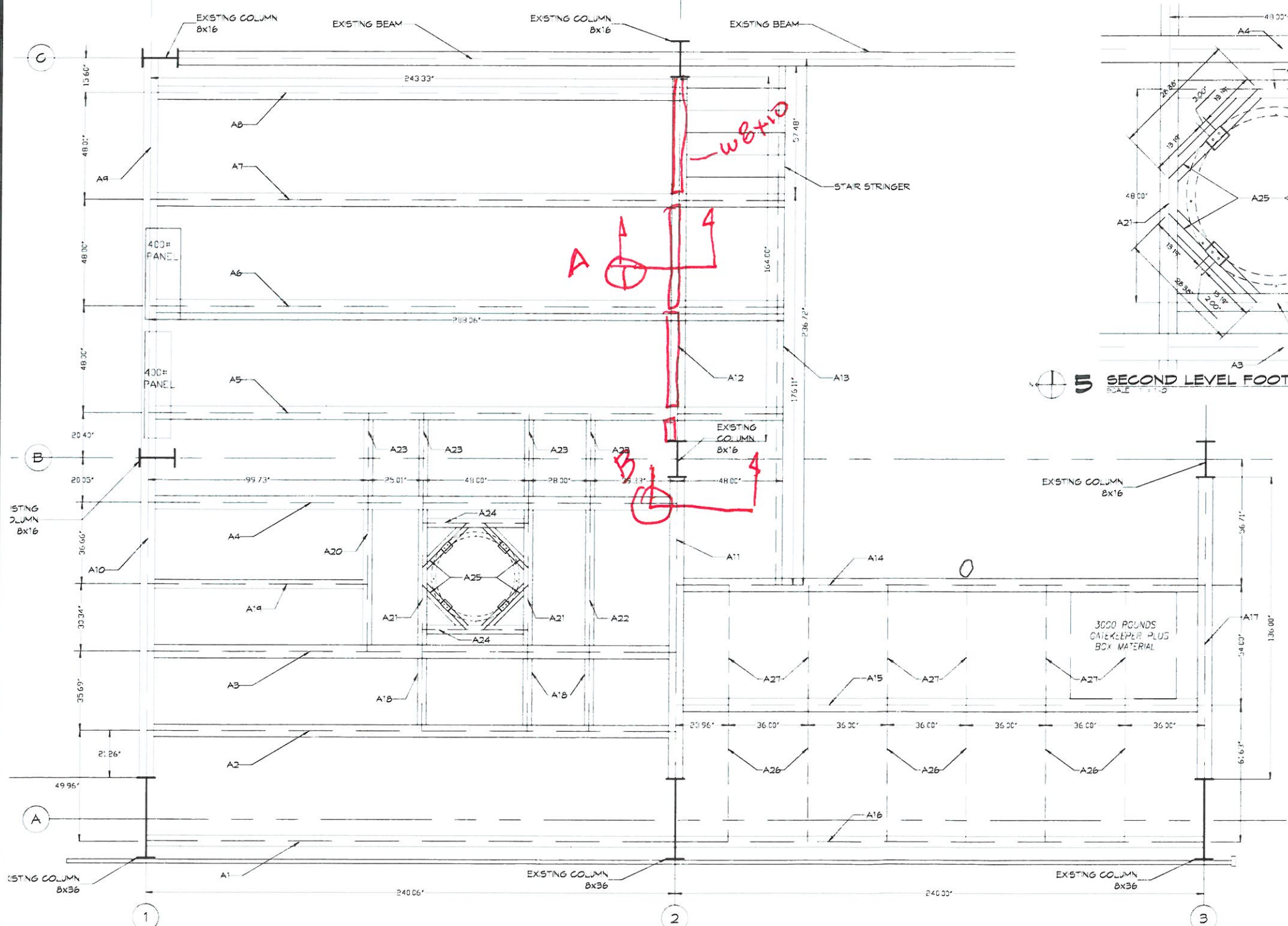
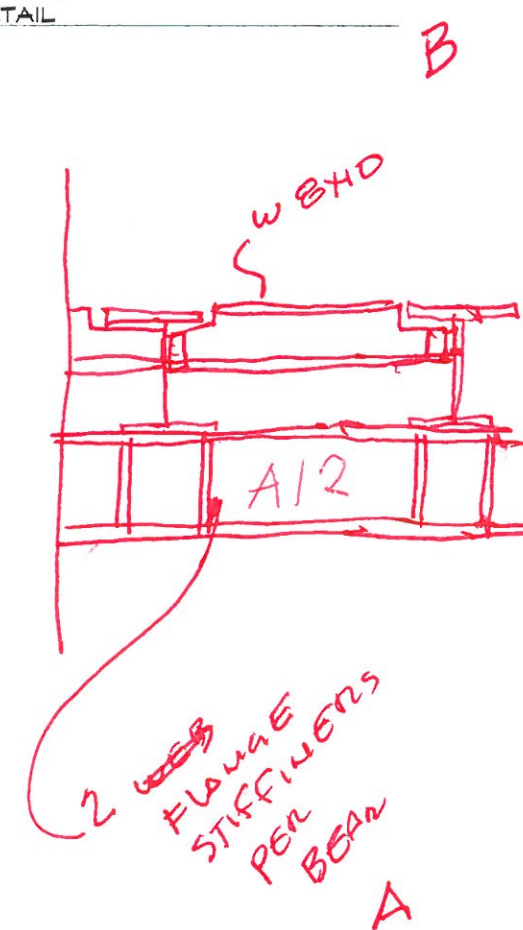


REVIEW SET
1/3/2021

GRIND EXISTING WELD FLAT & INSTALL 1/2" PL 12X16 WELD TO COVER COLUMN SPLINE



5 SECOND LEVEL FOOTING DETAIL
SCALE: 1/2" = 1'-0"



4 SECOND LEVEL
SCALE: 1/8" = 1'-0"

DAMMON ENGINEERING, INC.
LOUISIANA & MISSISSIPPI

www.dammonengineering.com
554 Old Spanish Trail
Bossier, LA 70608
PH: 985.649.5837

Chief Engineer: Brian Welch, PE
info@dammonengineering.com

NO.	DATE	DESCRIPTION

STRUCTURAL SUPPORT FOR PROCESS EQUIPMENT
HERITAGE PLASTICS

SHEET TITLE: E-1

DRAWING NUMBER: S102

SHEET NO: 02 of 7

DATE: 11-27-2020
DRAWN BY: JPS
CHECKED BY: JPS