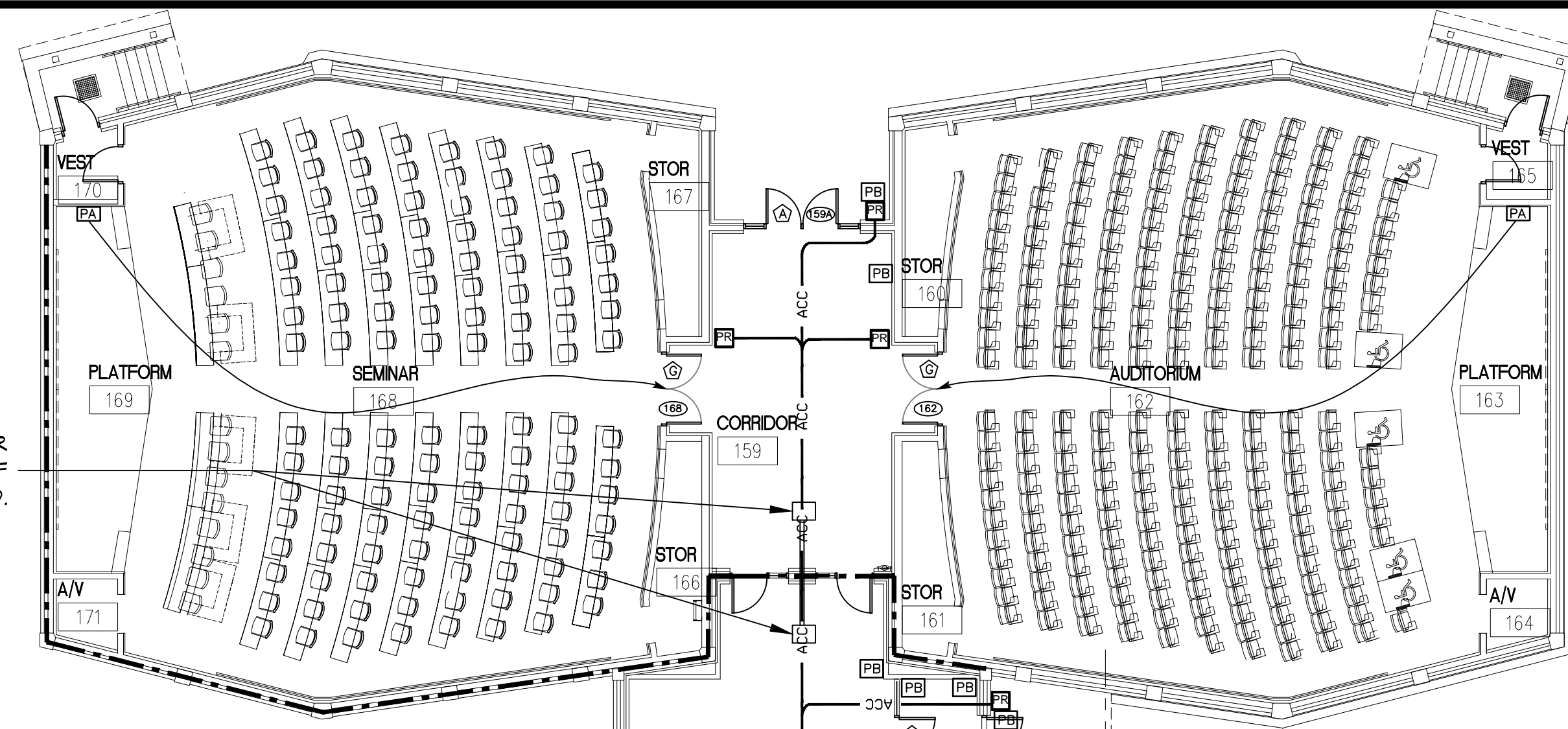


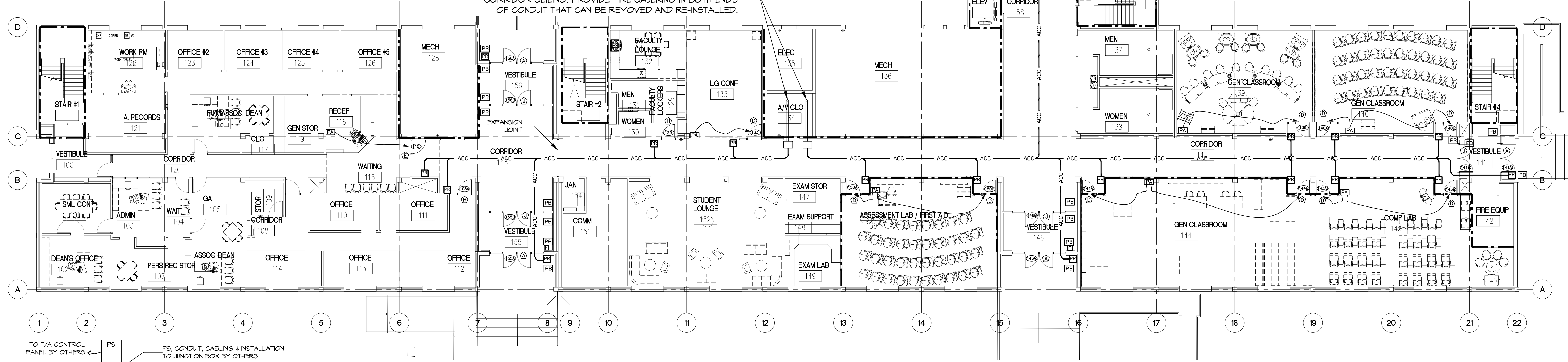
ACCESS CONTROL SYMBOL LEGEND

- PR = HID READER
- PB = HANDICAP PUSH BUTTON, BY OTHERS.
- PA = PUSH BUTTON TO LOCK DOORS, BY OTHERS.
- ← = ARROW INDICATES DOOR(S) THAT PUSH BUTTON LOCKS DOWN
- 214 = DOOR NUMBER
- E = HID READER
- ACC = ACCESS CONTROL CABLING
- = 1 HR FIRE RATED WALL
- = 2 HR FIRE RATED WALL

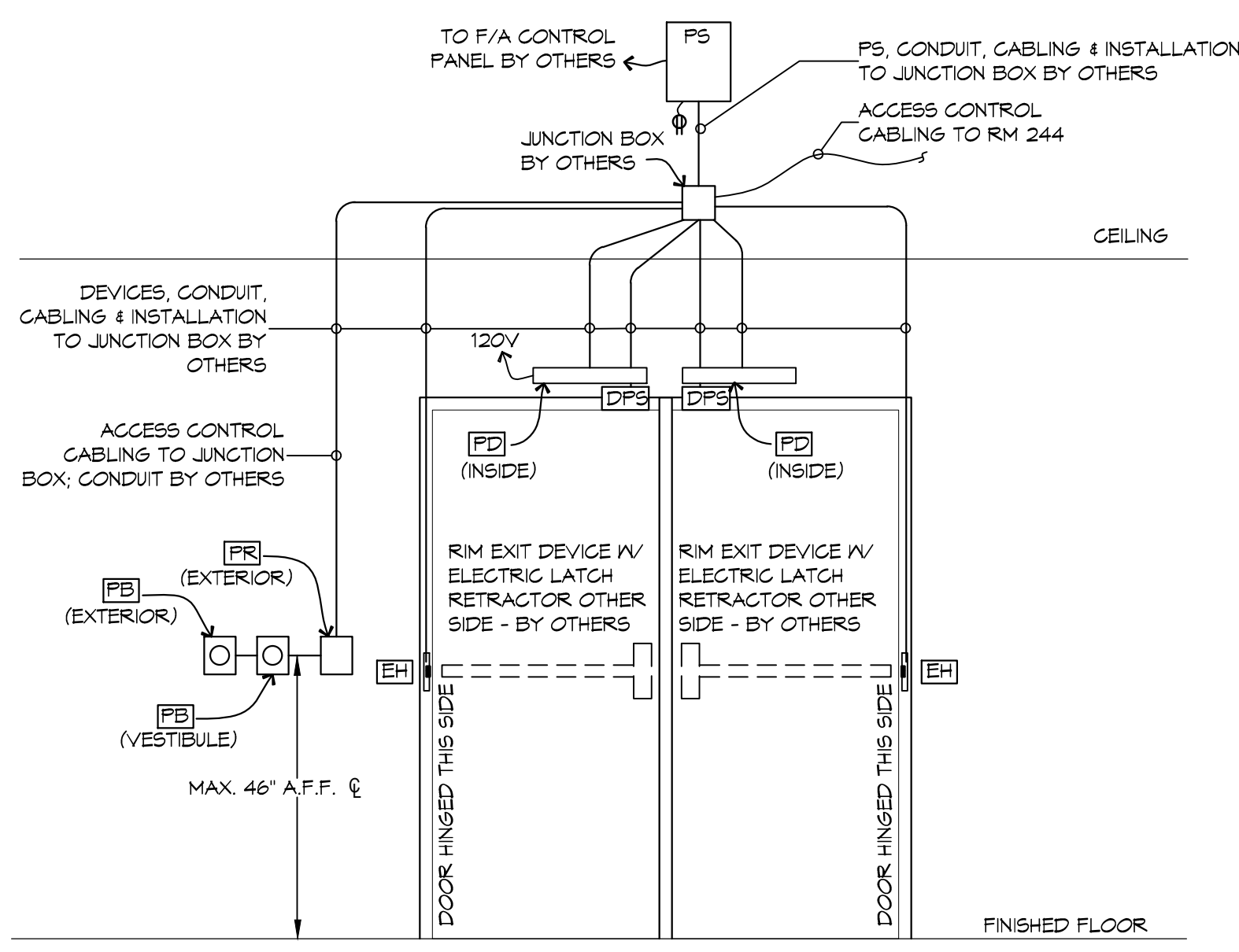


EMT CONDUIT WITH JUNCTION BOX BOTH ENDS IN CORRIDOR CEILING. PROVIDE FIRE CAULKING IN BOTH ENDS OF CONDUIT THAT CAN BE REMOVED AND RE-INSTALLED.

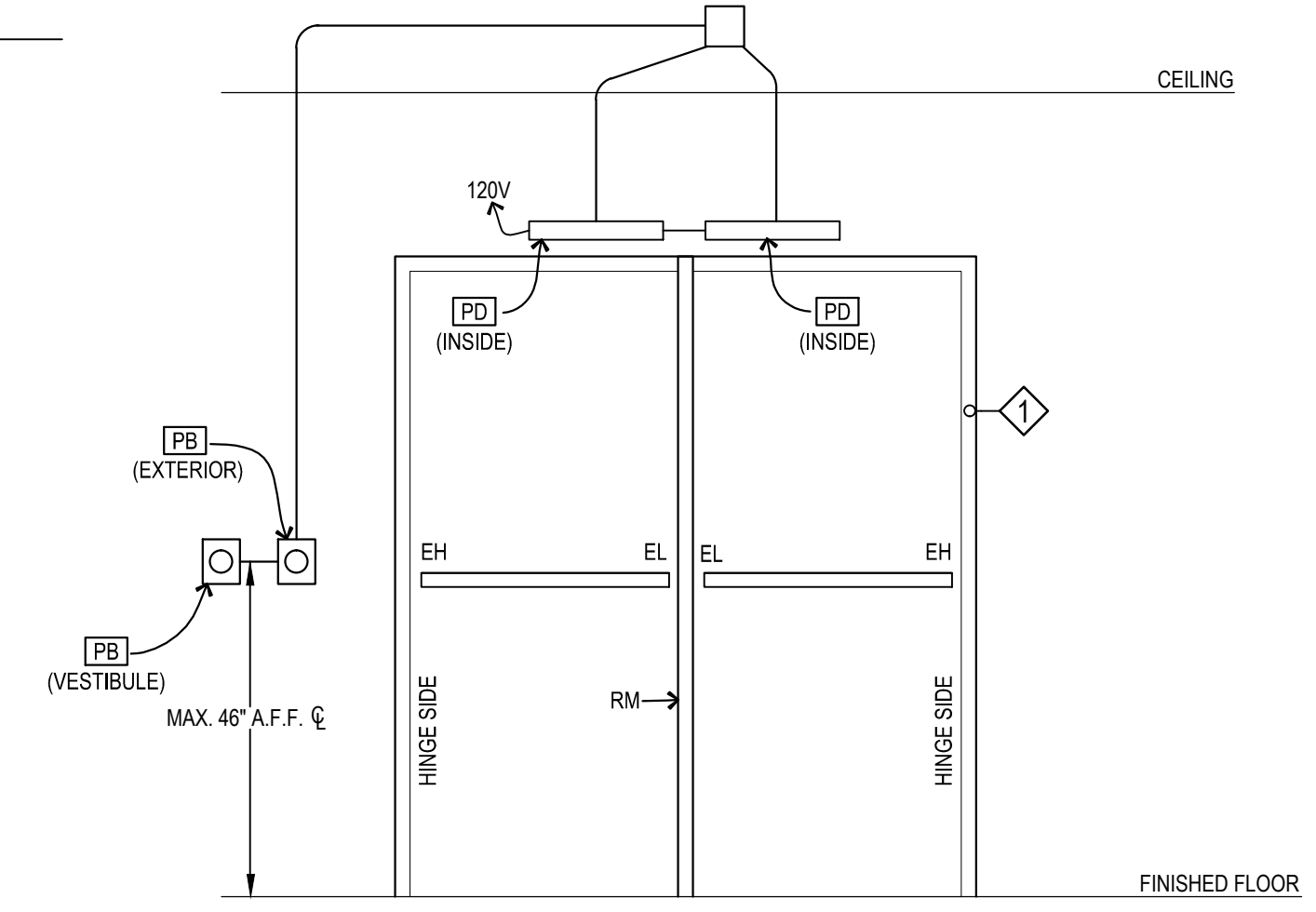
2EA - 4" EMT CONDUITS FROM RM 244 TO CORRIDOR CEILING ON 1ST FLOOR. TERMINATE CONDUIT WITH JUNCTION BOX IN CORRIDOR CEILING. PROVIDE FIRE CAULKING IN BOTH ENDS OF CONDUIT THAT CAN BE REMOVED AND RE-INSTALLED.



1 1st FLOOR
 SCALE: 3/32" = 1'-0"



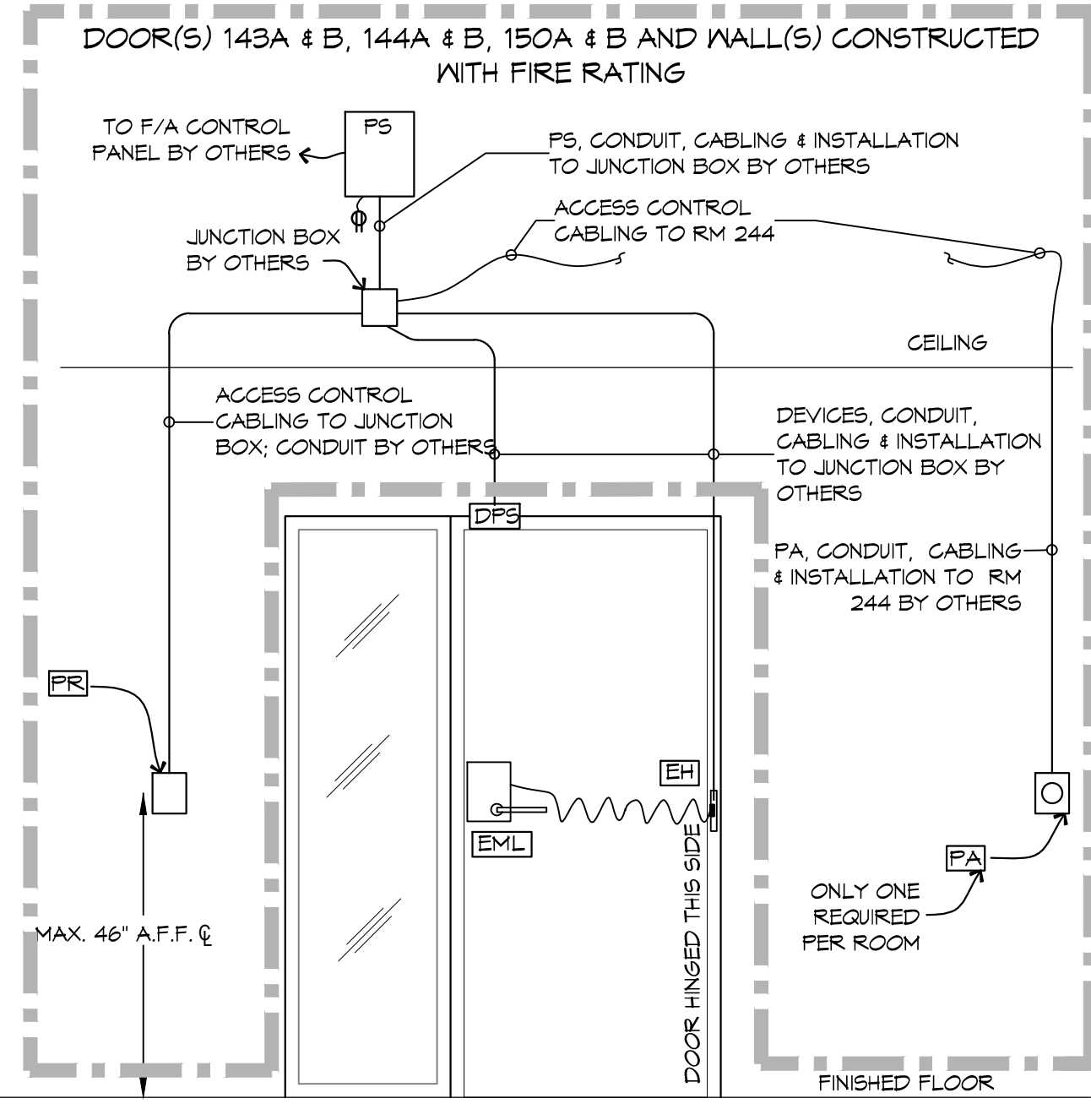
TYPICAL DOORS: 141A, 146A, 155A, 156A, 157A & 159A
 (DOOR HARDWARE SET #1)



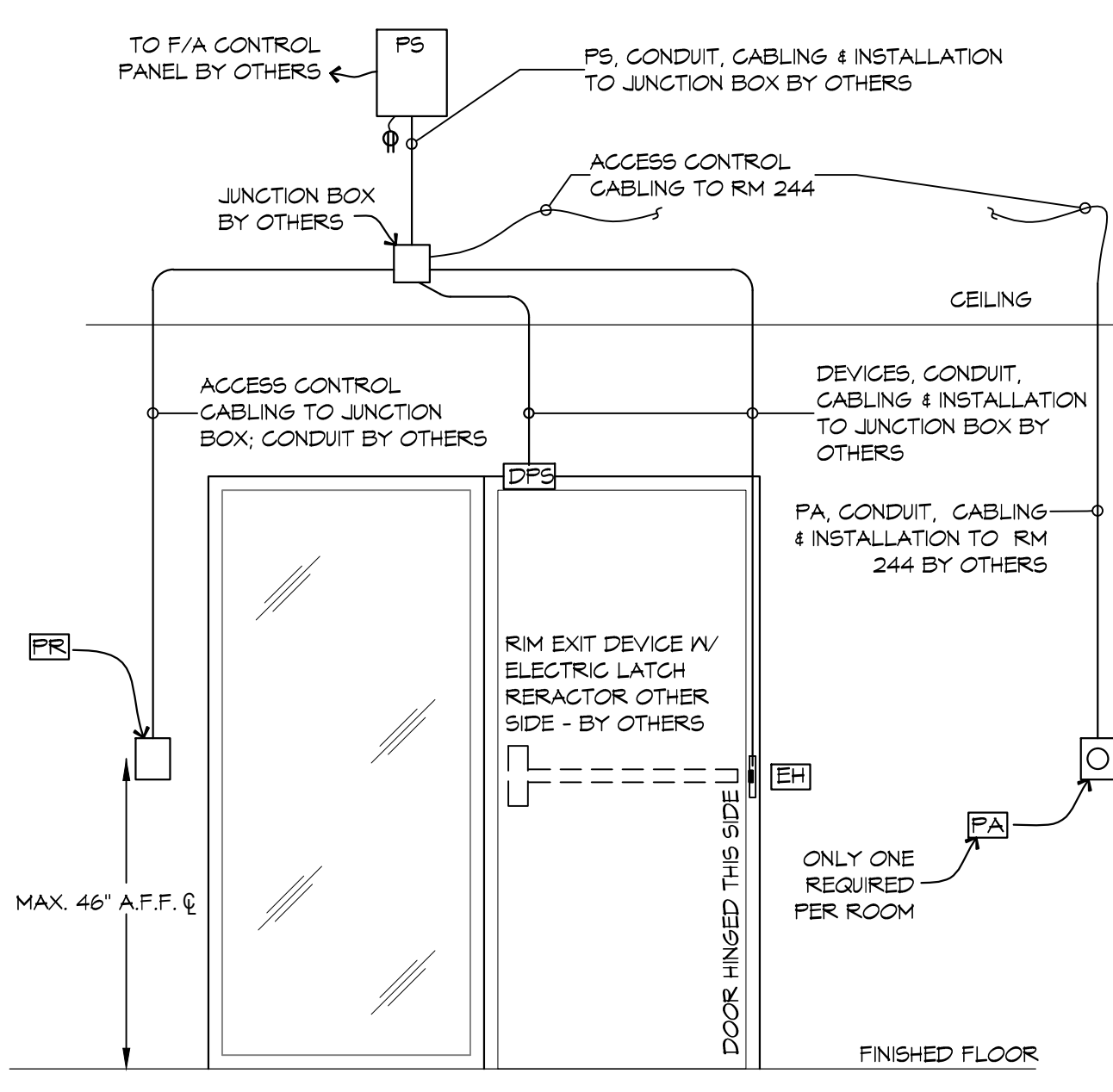
TYPICAL DOORS: 141B, 146B, 155B, 156B, 157B & 159B
 (DOOR HARDWARE SET #2
 NO ACCESS CONTROL THESE DOORS)

DOOR ACCESS CONTROL LEGEND

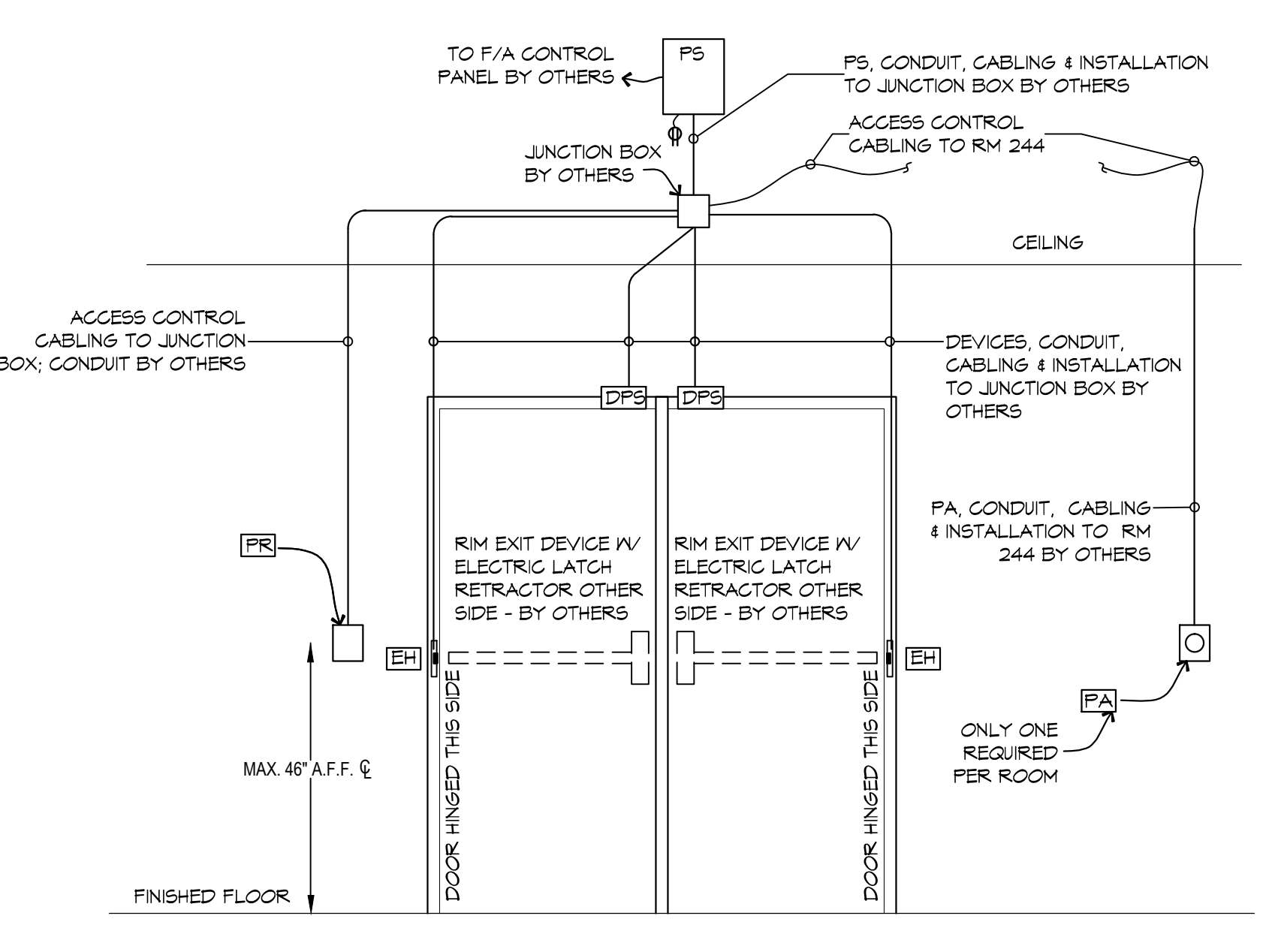
SYMBOL	DESCRIPTION	MOUNTING
△	DOOR DETAIL DESIGNATION	
DS	DOOR POSITION SWITCH (SUPPLIED & INSTALLED BY OTHERS)	BY OTHERS
EH	ELECTRIC POWER TRANSFER HINGE (SUPPLIED & INSTALLED BY OTHERS)	BY OTHERS
EL	RIM EXIT DEVICE WITH ELECTRIC LATCH RETRACTOR (SUPPLIED & INSTALLED BY OTHERS)	BY OTHERS
EML	ELECTRIFIED MORTISE LOCK (SUPPLIED & INSTALLED BY OTHERS)	BY OTHERS
ES	ELECTRIC STRIKE (SUPPLIED & INSTALLED BY OTHERS)	BY OTHERS
MS	MORTISE EXIT DEVICE WITH ELECTRIC LATCH RETRACTOR (SUPPLIED & INSTALLED BY OTHERS)	BY OTHERS
MS	MOTION SENSOR (SUPPLIED & INSTALLED BY OTHERS)	BY OTHERS
PE	PUSH BUTTON EMERGENCY LOCK NEAR PODIUM OR IN ADJACENT SPACE (SUPPLIED & INSTALLED BY OTHERS)	BY OTHERS
PB	ADA PUSH BUTTON (SUPPLIED & INSTALLED BY OTHERS)	BY OTHERS
PD	AUTO DOOR OPERATOR (SUPPLIED & INSTALLED BY OTHERS)	BY OTHERS
PR	HID ICLASS 922 PROXIMITY READER	WALL MAX. 46" A.F.F. TO U.C.N.
PS	POWER SUPPLY (SUPPLIED & INSTALLED BY OTHERS)	BY OTHERS



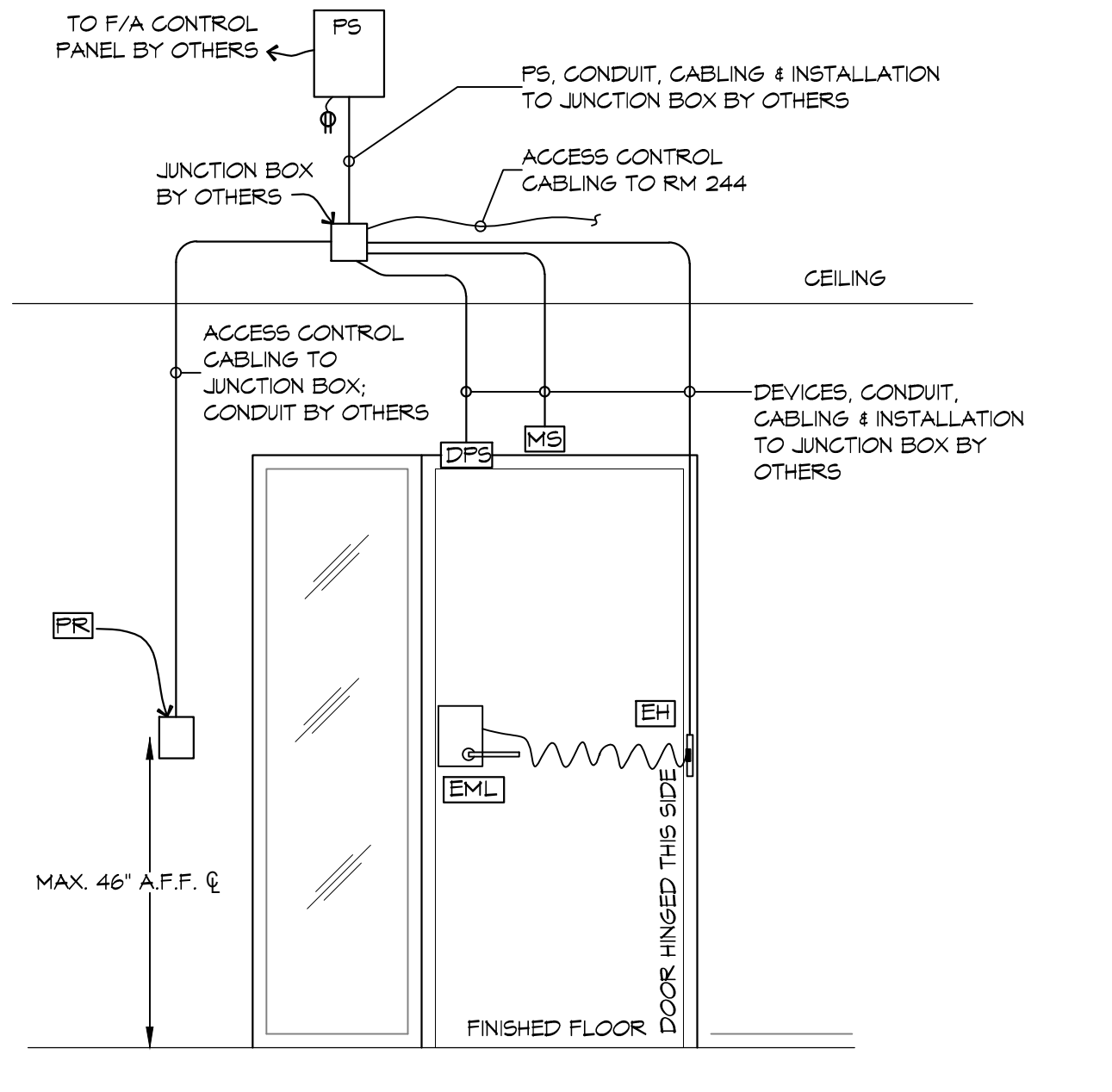
TYPICAL DOORS: 133, 134, 140A, 140B, 143A, 143B, 144A, 144B, 150A, 150B, 238, 243, 245 & 335
 (DOOR HARDWARE SET #1B)



TYPICAL DOORS: 115, 214, 216, 268A, 324 & 362
 (DOOR HARDWARE SET #21)



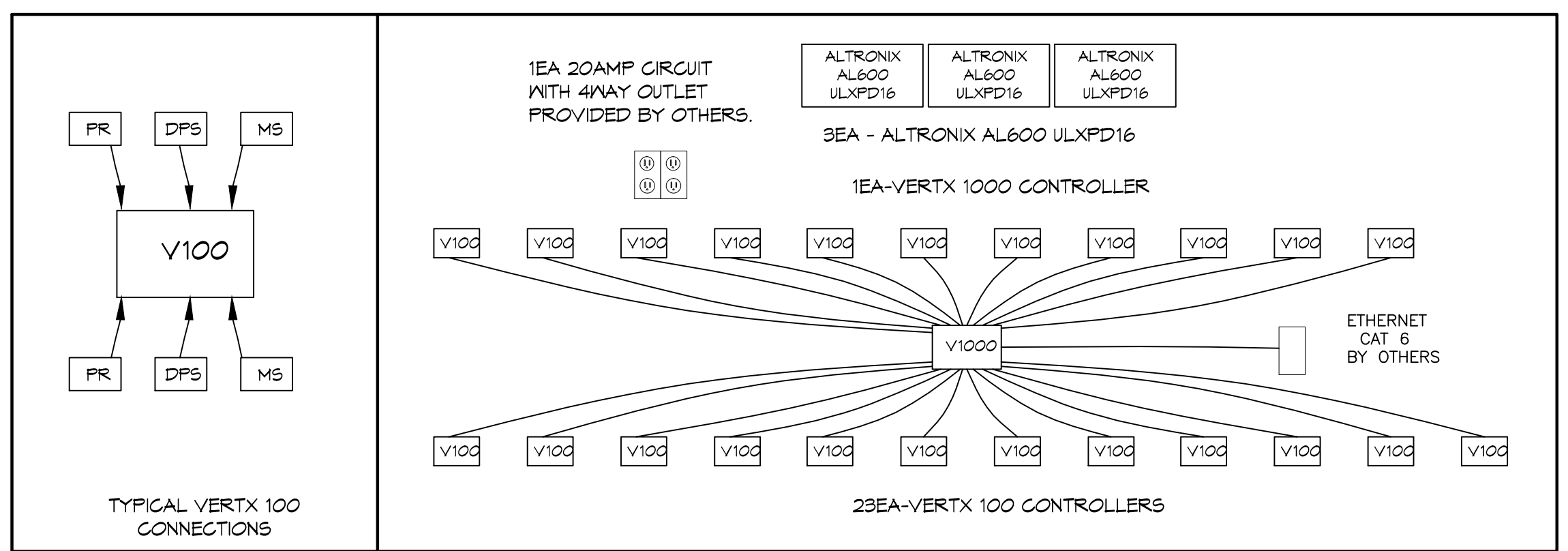
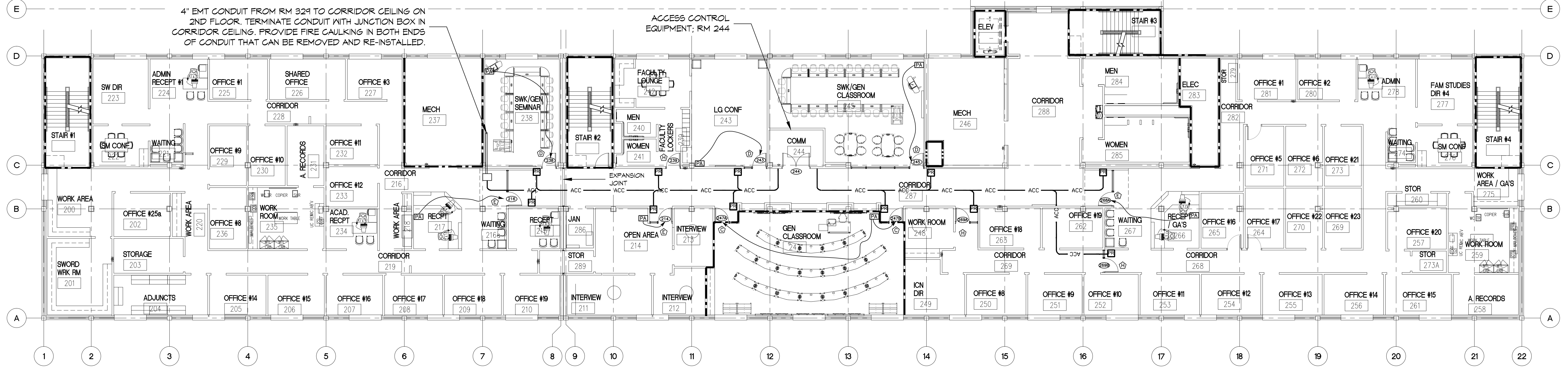
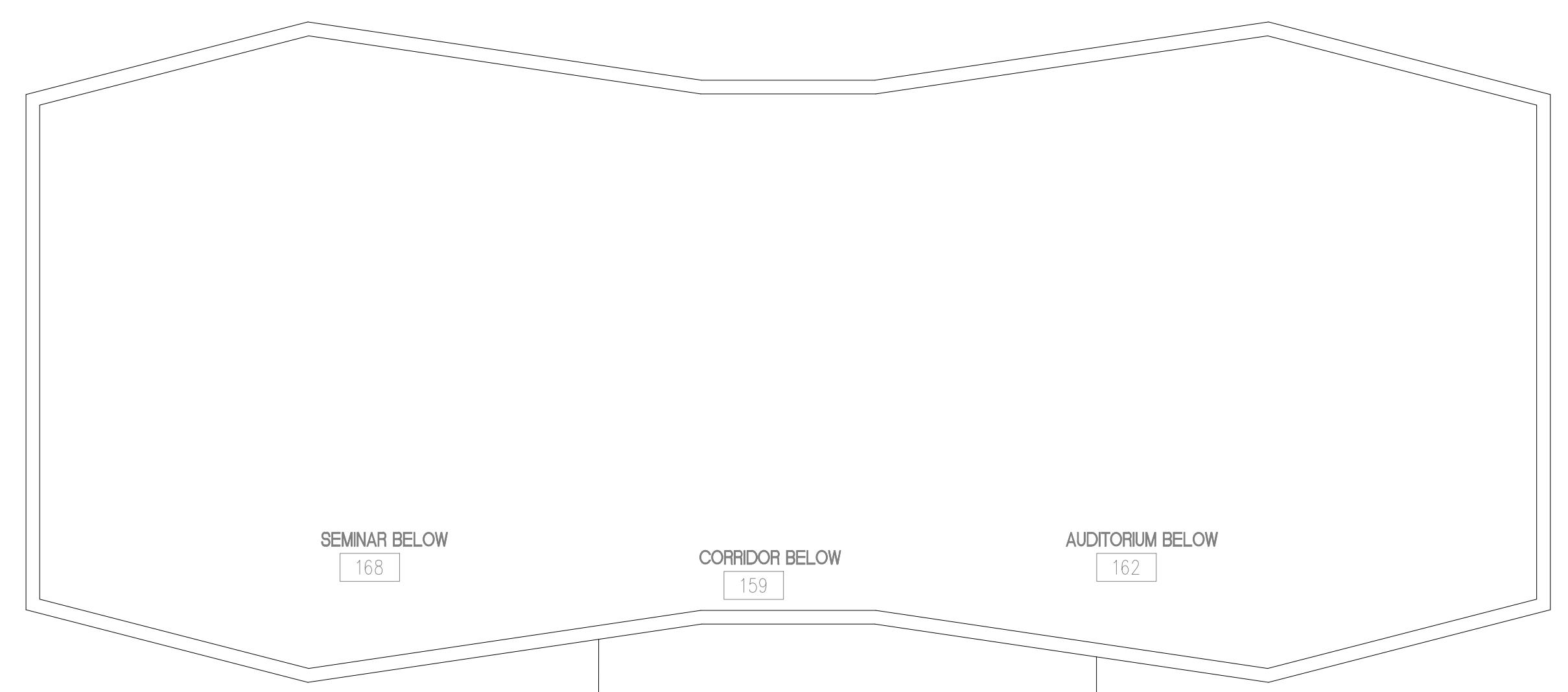
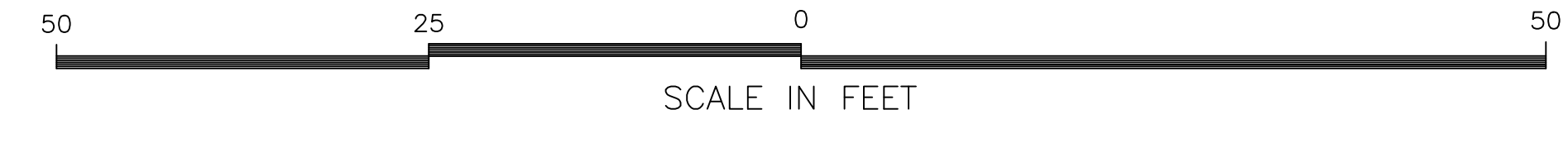
TYPICAL DOORS: 162 & 168
 (DOOR HARDWARE SET #23)



TYPICAL DOORS: 108A, 124, 234, 264A, 269B & 334
 (DOOR HARDWARE SET #20)

ACCESS CONTROL SYMBOL LEGEND

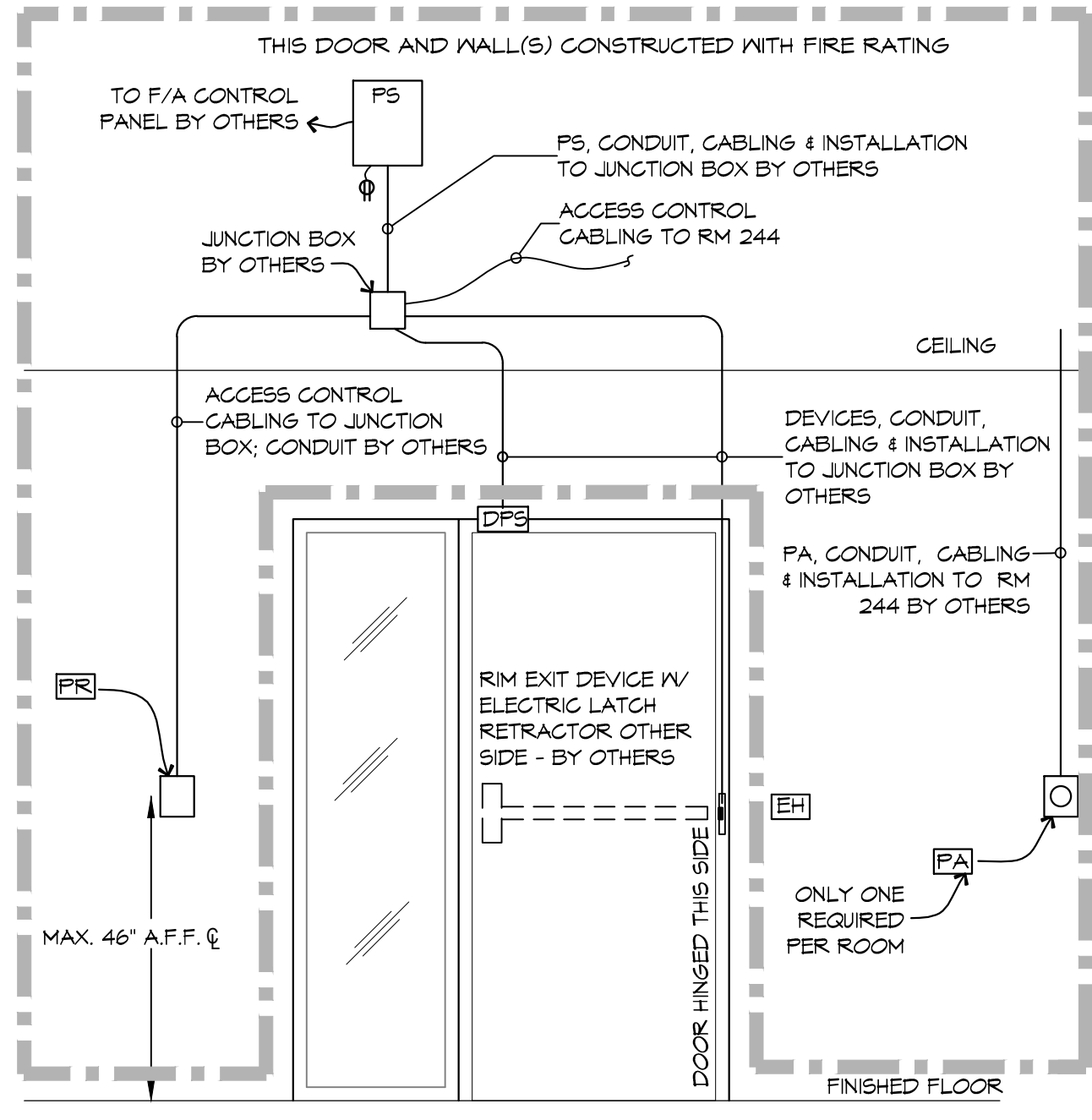
- PR = HID READER
- PB = HANDICAP PUSH BUTTON, BY OTHERS.
- PA = PUSH BUTTON TO LOCK DOORS, BY OTHERS.
- ARROW = ARROW INDICATES DOOR(S) THAT PUSH BUTTON LOCKS DOWN
- 214 = DOOR NUMBER
- EH = HID READER
- ACC = ACCESS CONTROL CABLING
- = 1 HR FIRE RATED MALL
- = 2 HR FIRE RATED MALL



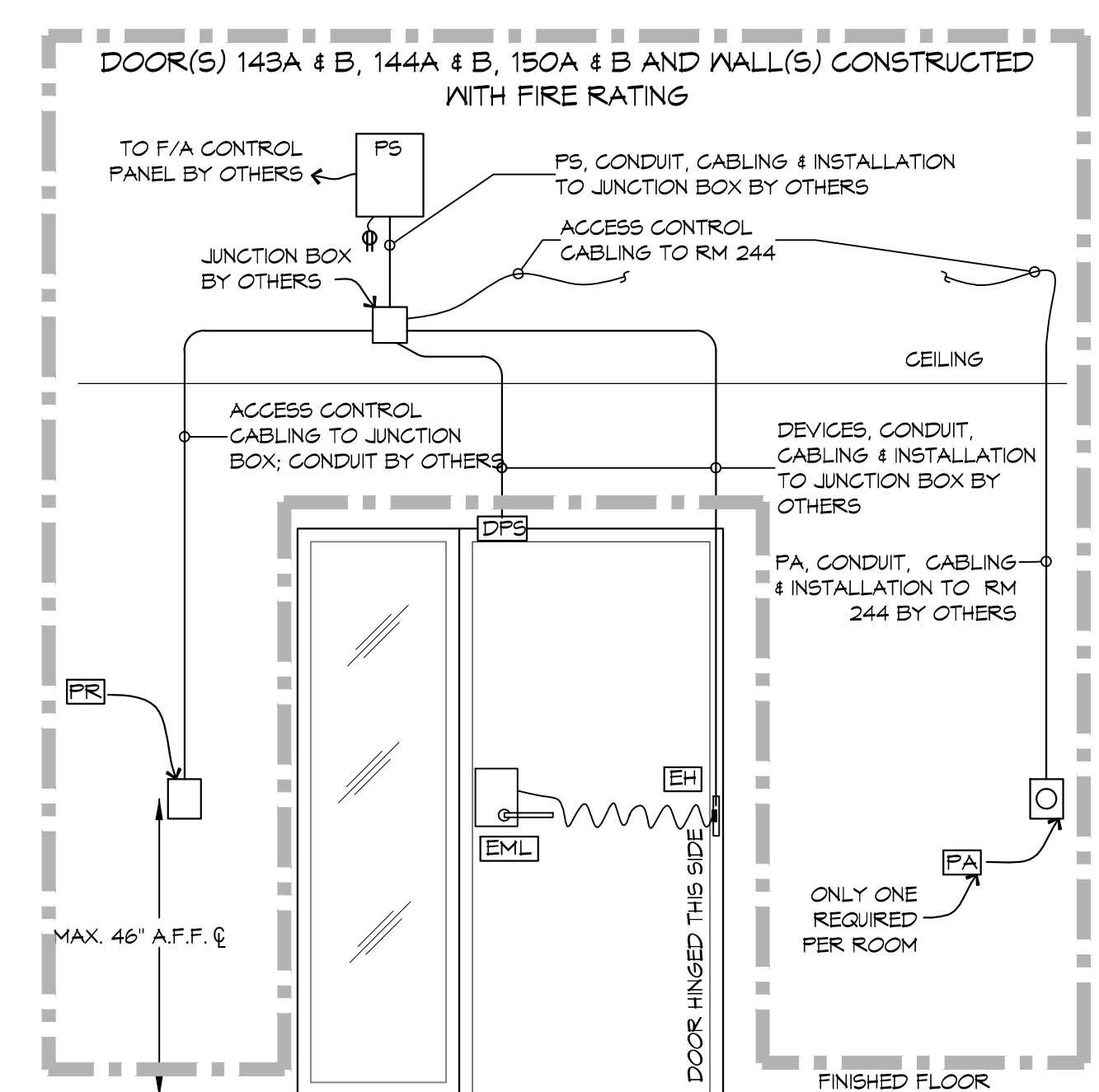
COMM RM 244

DOOR ACCESS CONTROL LEGEND

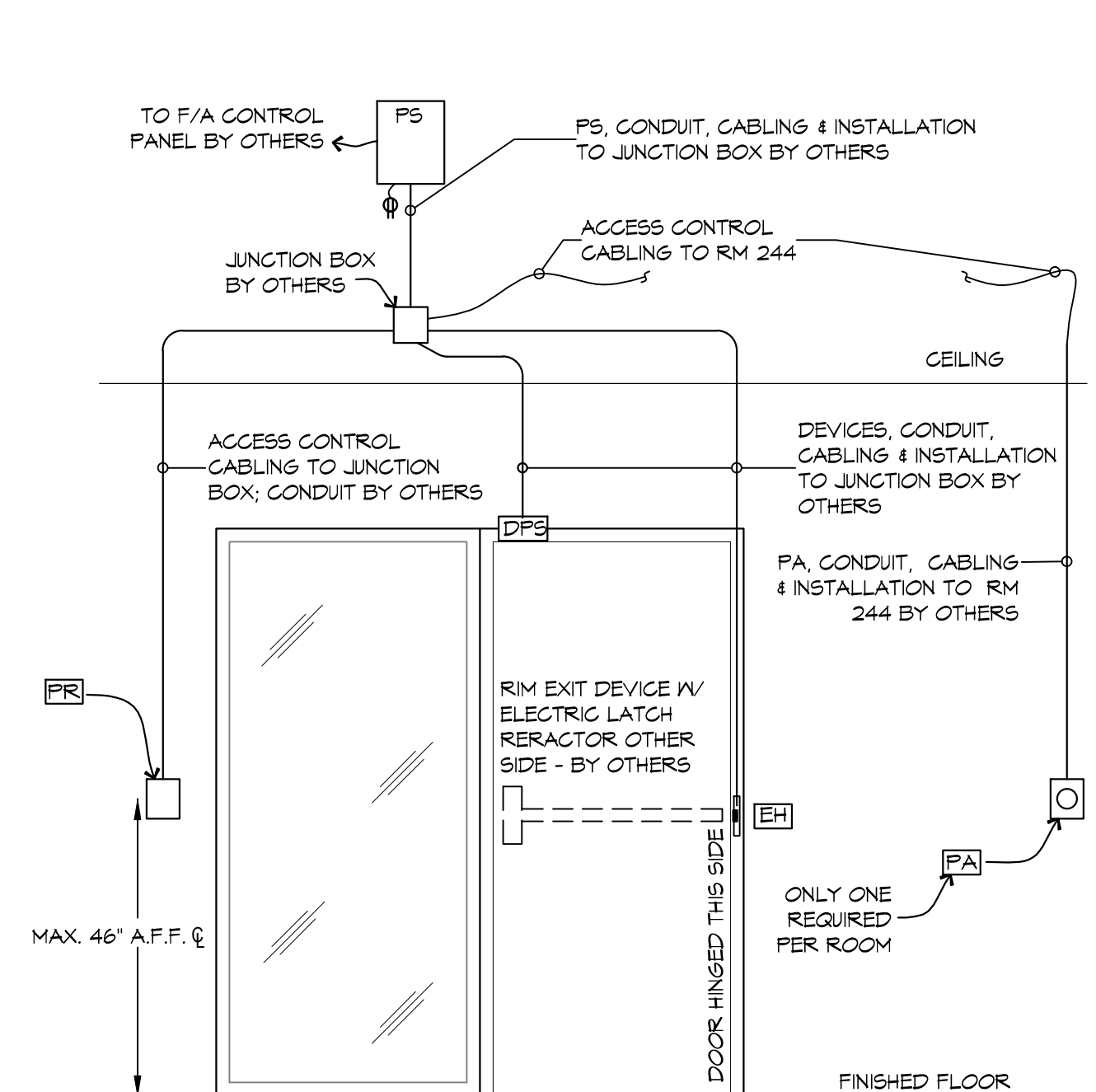
SYMBOL	DESCRIPTION	MOUNTING
△	DOOR DETAIL DESIGNATION	
PS	DOOR POSITION SWITCH (SUPPLIED & INSTALLED BY OTHERS)	BY OTHERS
EH	ELECTRIC POWER TRANSFER HINGE (SUPPLIED & INSTALLED BY OTHERS)	BY OTHERS
EL	RM EXIT DEVICE WITH ELECTRIC LATCH RETRACTOR (SUPPLIED & INSTALLED BY OTHERS)	BY OTHERS
EML	ELECTRIFIED MORTISE LOCK (SUPPLIED & INSTALLED BY OTHERS)	BY OTHERS
ES	ELECTRIC STRIKE (SUPPLIED & INSTALLED BY OTHERS)	BY OTHERS
MS	MORTISE EXIT DEVICE WITH ELECTRIC LATCH RETRACTOR (SUPPLIED & INSTALLED BY OTHERS)	BY OTHERS
MS	MOTION SENSOR (SUPPLIED & INSTALLED BY OTHERS)	BY OTHERS
PA	PUSH BUTTON EMERGENCY LOCK NEAR PODIUM OR IN ADJACENT SPACE (SUPPLIED & INSTALLED BY OTHERS)	BY OTHERS
PB	ADA PUSH BUTTON (SUPPLIED & INSTALLED BY OTHERS)	BY OTHERS
PD	AUTO DOOR OPERATOR (SUPPLIED & INSTALLED BY OTHERS)	BY OTHERS
PR	HID ICLASS 922 PROXIMITY READER	WALL MAX 46" A.F.F. TO U.G.N.
PS	POWER SUPPLY (SUPPLIED & INSTALLED BY OTHERS)	BY OTHERS



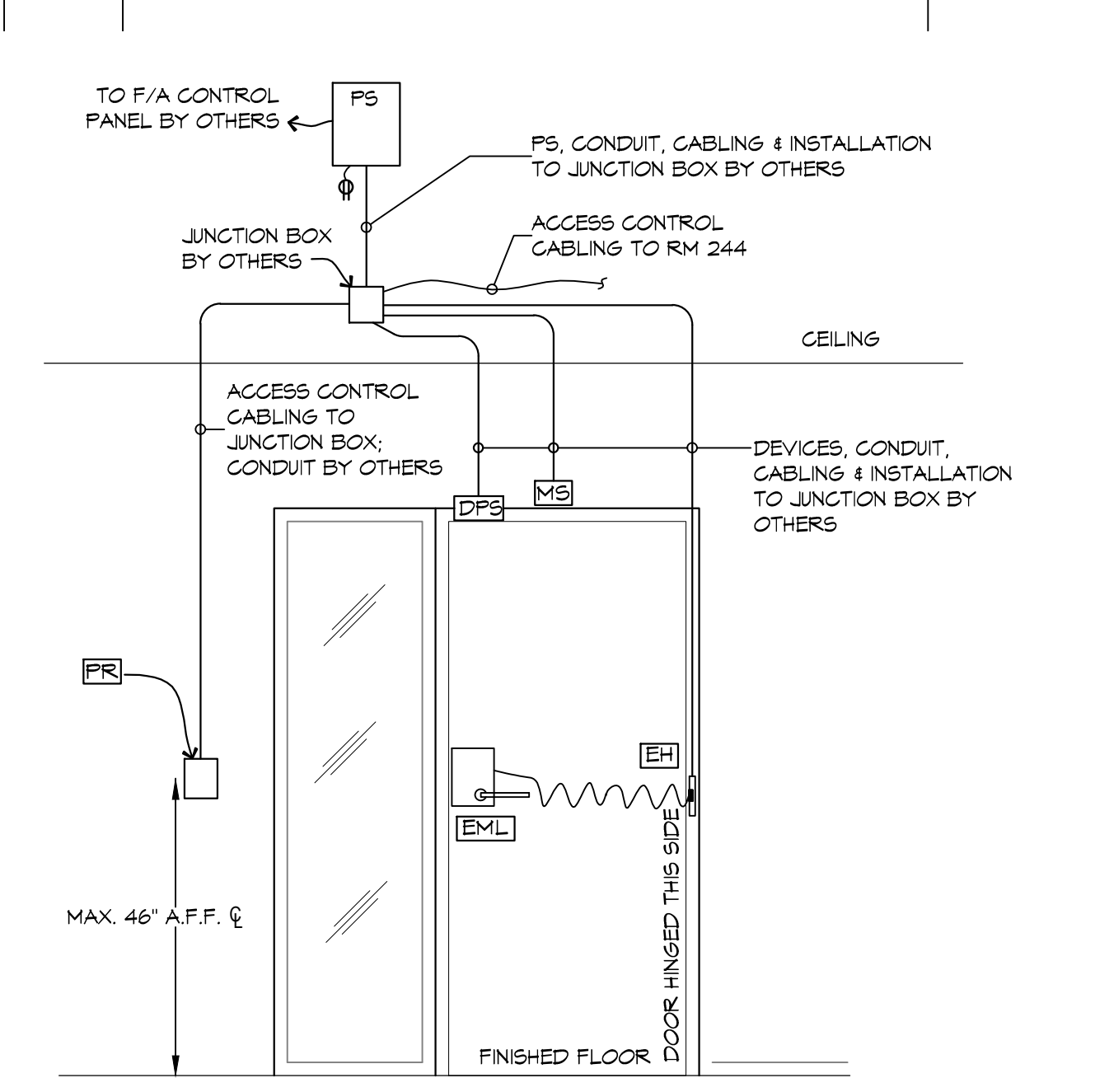
TYPICAL DOORS: 247A & 247B
 (DOOR HARDWARE SET #13)



TYPICAL DOORS: 133, 134, 140A, 140B, 143A, 143B, 144A, 144B, 150A, 150B, 238, 243, 245 & 335
 (DOOR HARDWARE SET #15)



TYPICAL DOORS: 115, 214, 216, 268A, 324 & 362
 (DOOR HARDWARE SET #21)



TYPICAL DOORS: 108A, 129, 239, 269A, 269B & 934
 (DOOR HARDWARE SET #20)

Security101
 J&K Systems Integrations
 DPA Security 101
 820 Lakeland Dr., Ste. E,
 Mobile, AL 36693

UNIVERSITY OF SOUTHERN MISSISSIPPI
ACCESS CONTROL SYSTEMS

HATTIESBURG, MS
 DRAWN BY: [Name]
 DATE: 7/15/2018
 CHECKED BY: [Name]

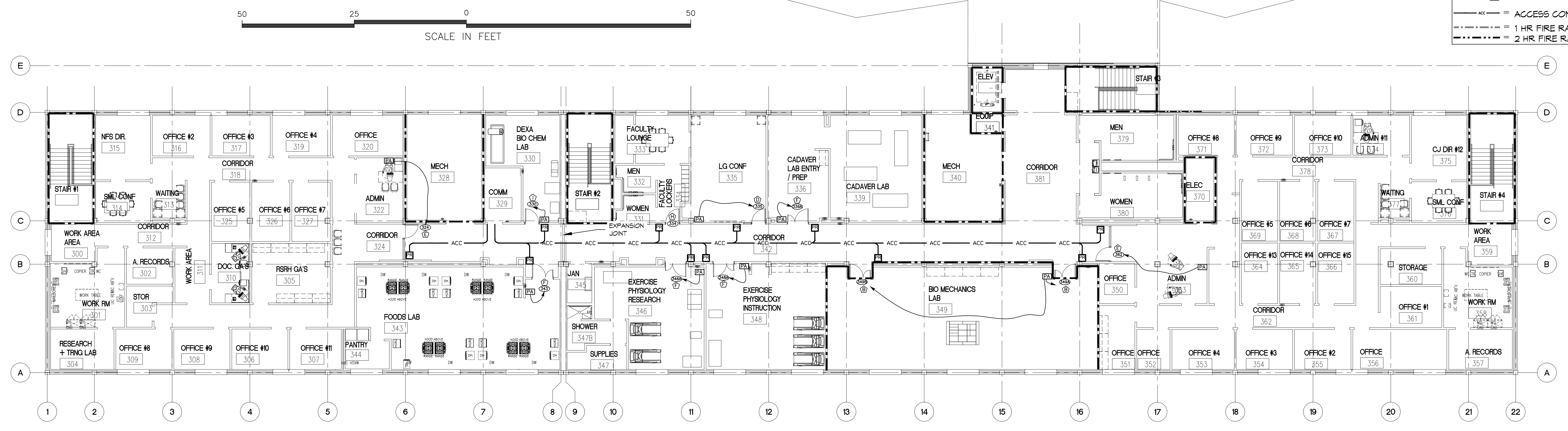
SHEET TITLE:
2ND FLOOR ACCESS CONTROL PLAN

DRAWING NUMBER:
SEC-2

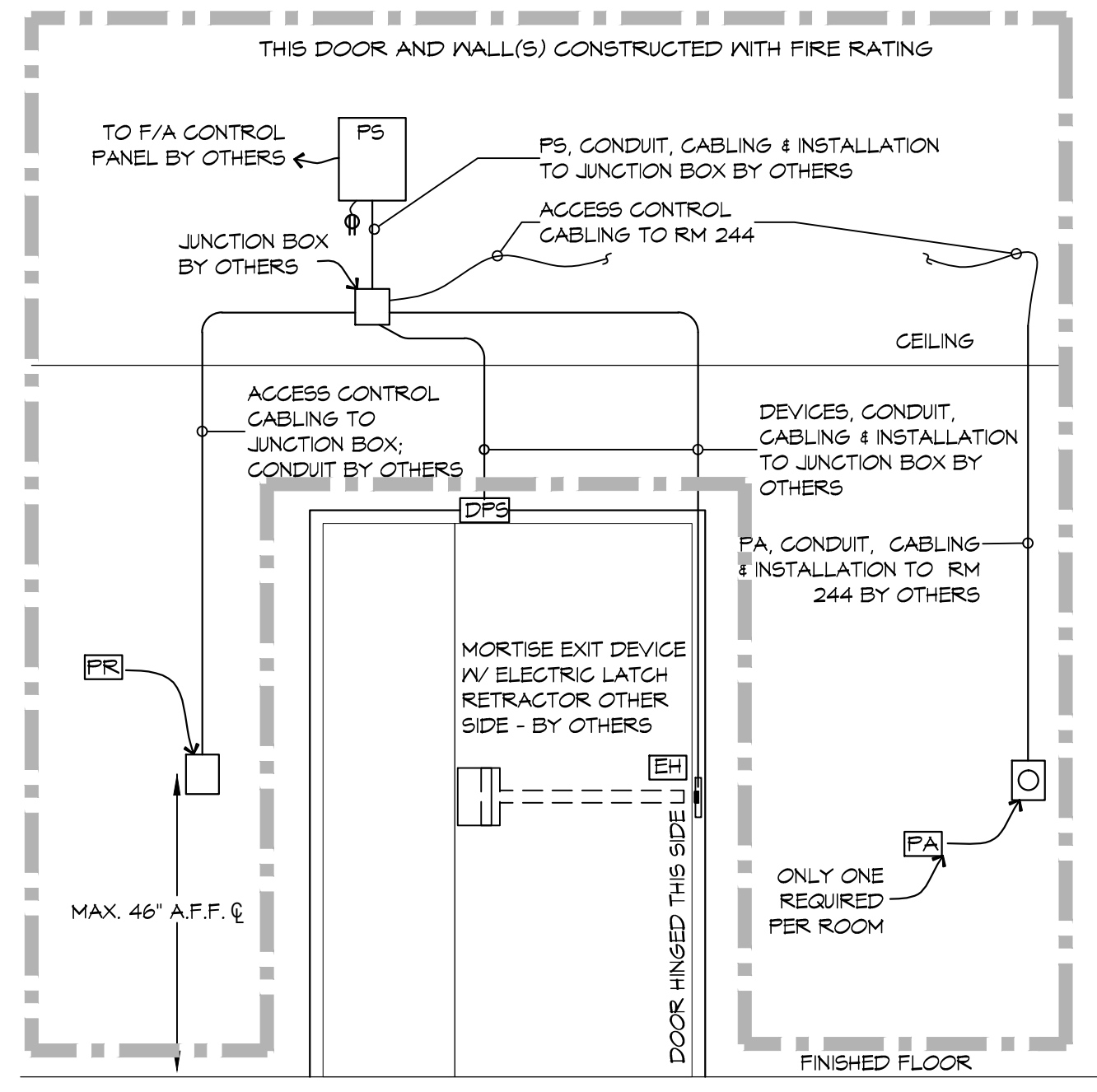
SHEET No: 2 of 3

ACCESS CONTROL SYMBOL LEGEND

PR	= HID READER
PB	= HANDICAP PUSH BUTTON, BY OTHERS.
PA	= PUSH BUTTON TO LOCK DOORS, BY OTHERS.
→	= ARROW INDICATES DOOR(S) THAT PUSH BUTTON LOCKS DOWN
214	= DOOR NUMBER
E	= HID READER
---	= ACCESS CONTROL CABLING
---	= 1 HR FIRE RATED WALL
---	= 2 HR FIRE RATED WALL



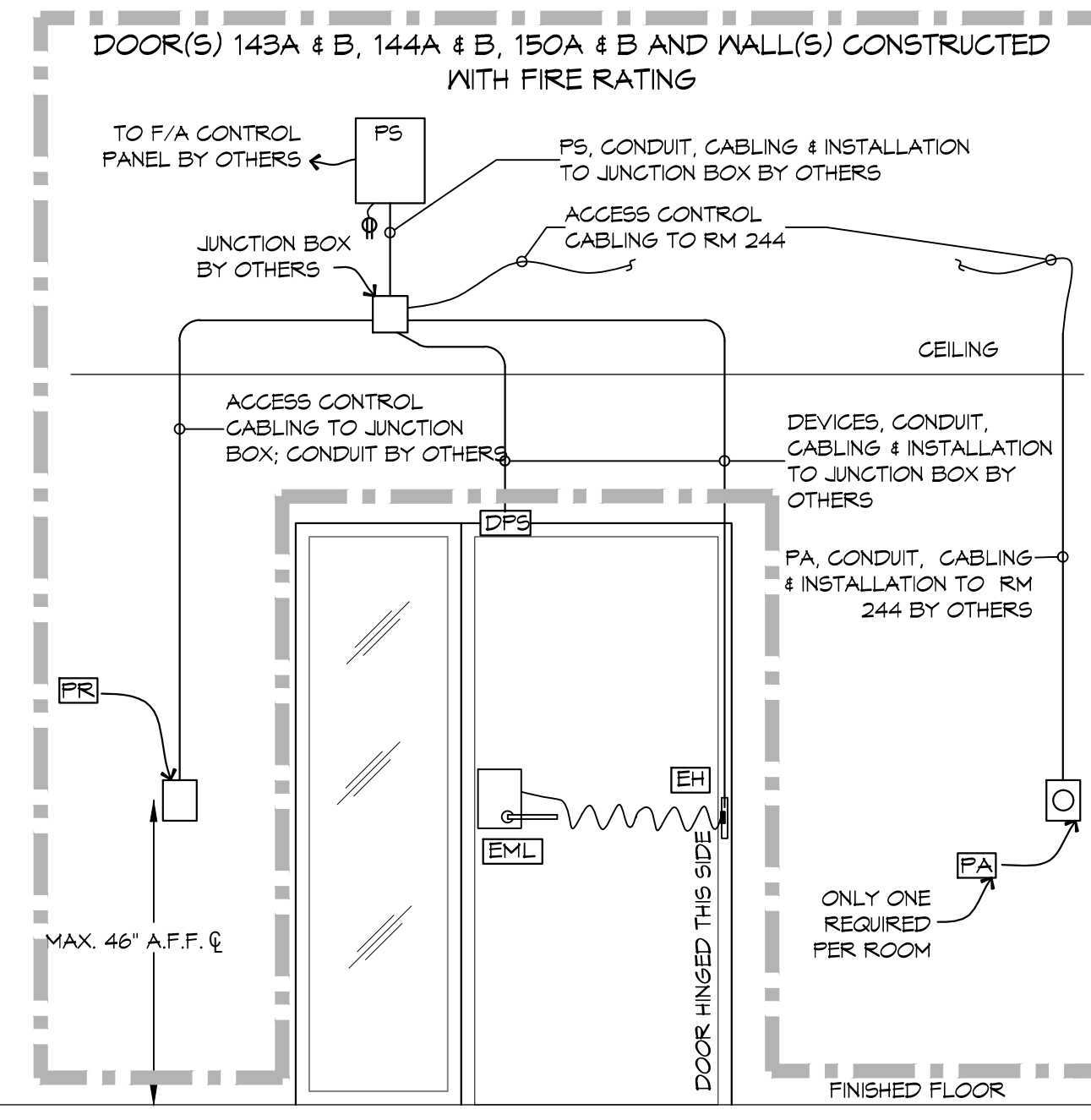
1 3rd FLOOR
 SCALE: 3/32" = 1'-0"



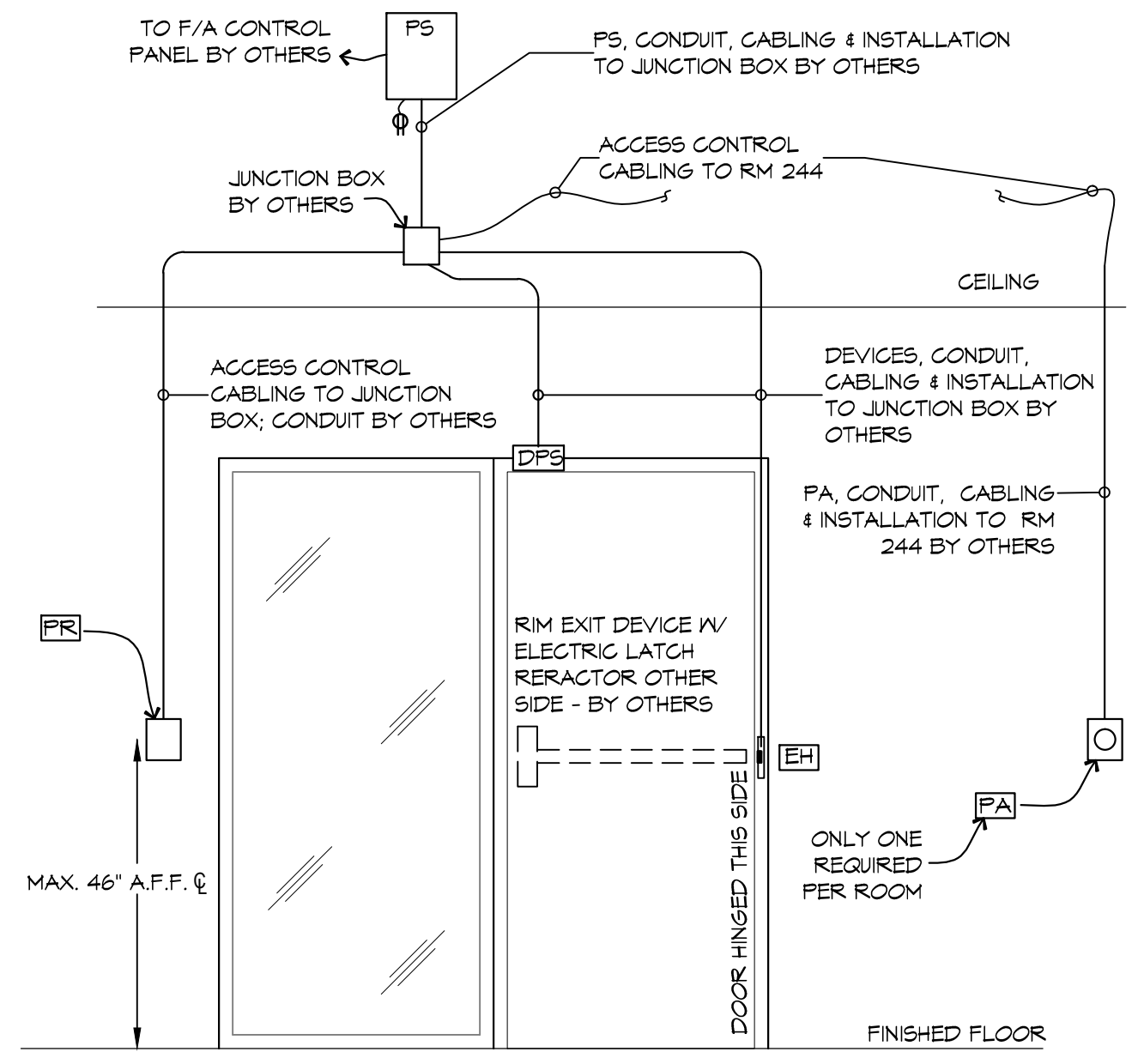
TYPICAL DOORS: 349A & 349B
 (DOOR HARDWARE SET #4)

DOOR ACCESS CONTROL LEGEND

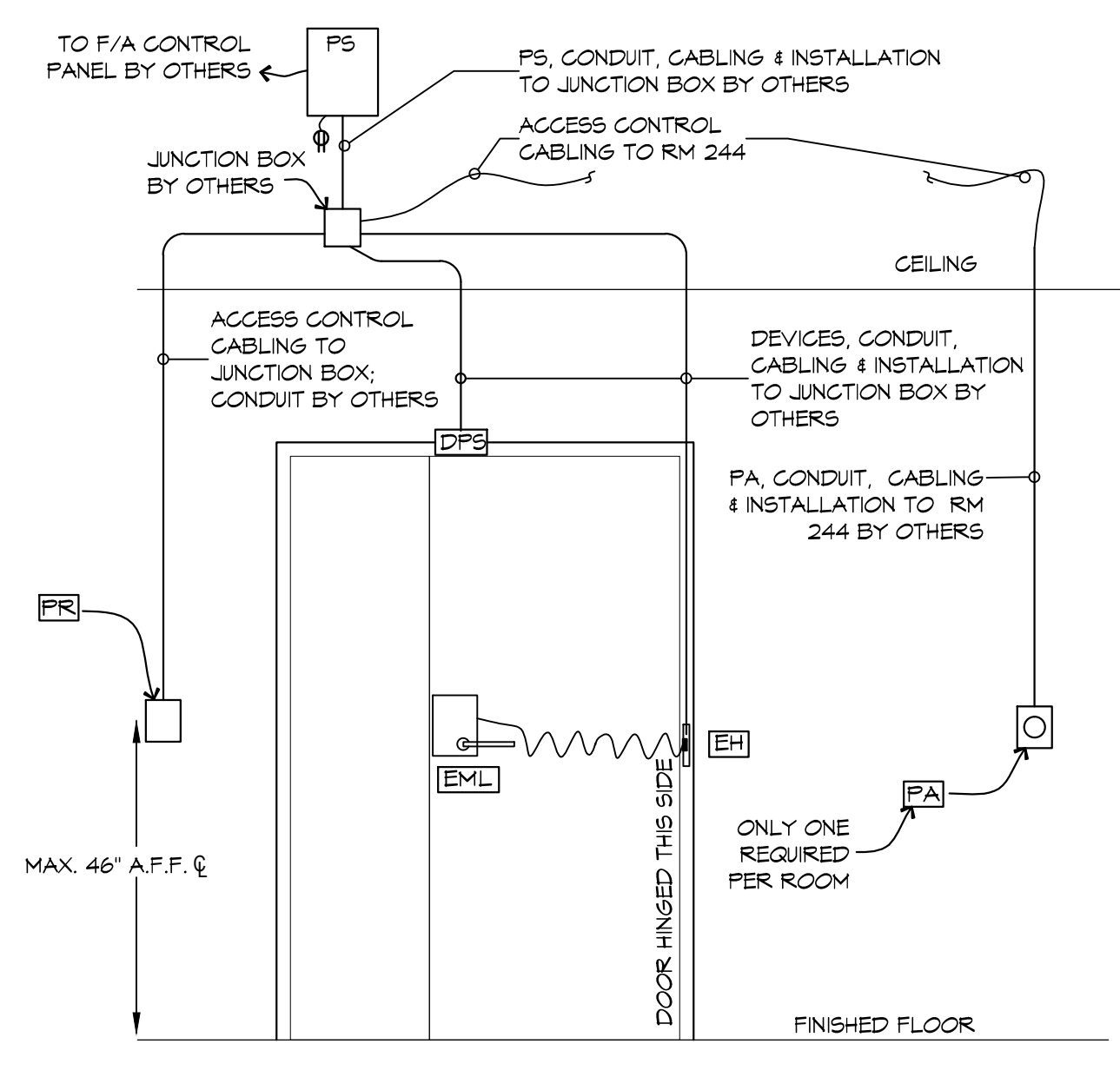
SYMBOL	DESCRIPTION	MOUNTING
△	DOOR DETAIL DESIGNATION	
DPS	DOOR POSITION SWITCH (SUPPLIED & INSTALLED BY OTHERS)	BY OTHERS
EH	ELECTRIC POWER TRANSFER HINGE (SUPPLIED & INSTALLED BY OTHERS)	BY OTHERS
EL	RIM EXIT DEVICE WITH ELECTRIC LATCH RETRACTOR (SUPPLIED & INSTALLED BY OTHERS)	BY OTHERS
EML	ELECTRIFIED MORTISE LOCK (SUPPLIED & INSTALLED BY OTHERS)	BY OTHERS
ES	ELECTRIC STRIKE (SUPPLIED & INSTALLED BY OTHERS)	BY OTHERS
MP	MORTISE EXIT DEVICE WITH ELECTRIC LATCH RETRACTOR (SUPPLIED & INSTALLED BY OTHERS)	BY OTHERS
MS	MOTION SENSOR (SUPPLIED & INSTALLED BY OTHERS)	BY OTHERS
PA	PUSH BUTTON EMERGENCY LOCK NEAR PODIUM OR IN ADJACENT SPACE (SUPPLIED & INSTALLED BY OTHERS)	BY OTHERS
PB	ADA PUSH BUTTON (SUPPLIED & INSTALLED BY OTHERS)	BY OTHERS
PO	AUTO DOOR OPERATOR (SUPPLIED & INSTALLED BY OTHERS)	BY OTHERS
PR	HID ICLASS 922 PROXIMITY READER	WALL MAX 46" A.F.F. TO 1 U.O.N.
PS	POWER SUPPLY (SUPPLIED & INSTALLED BY OTHERS)	BY OTHERS



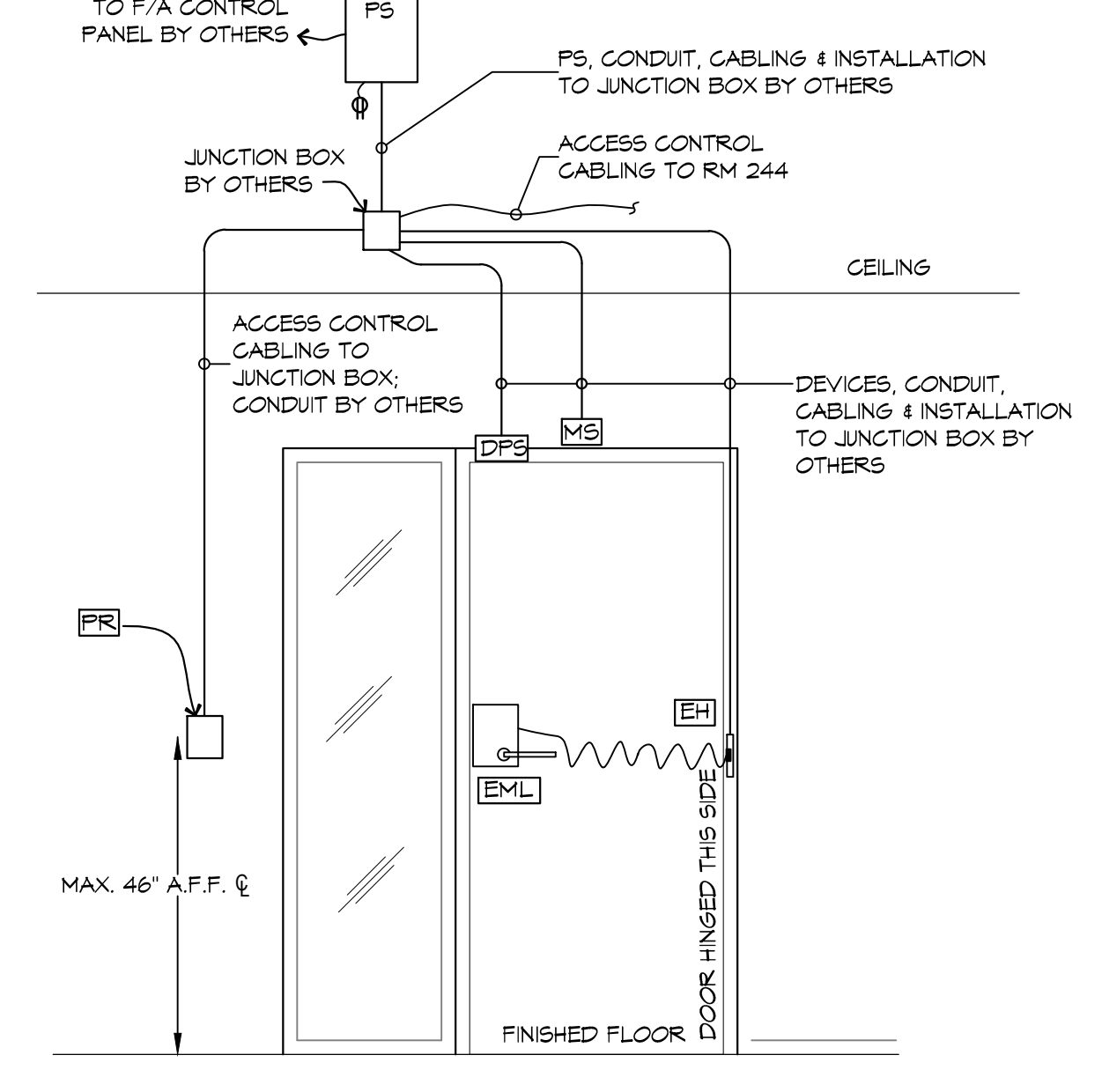
TYPICAL DOORS: 133, 139, 140A, 140B, 143A, 143B, 144A, 144B, 150A, 150B, 230, 243, 245 & 335
 (DOOR HARDWARE SET #15)



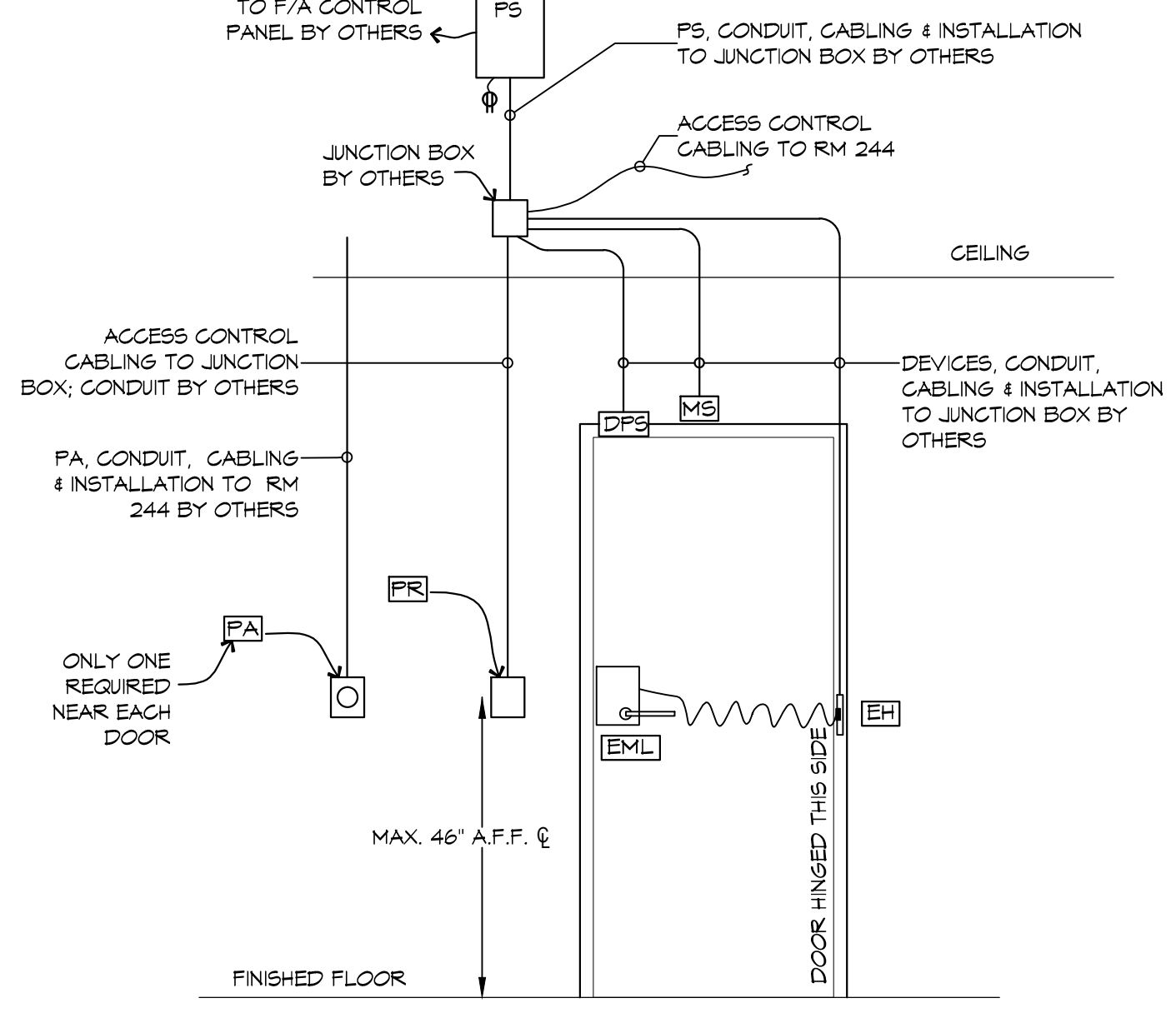
TYPICAL DOORS: 115, 214, 216, 268A, 324 & 362
 (DOOR HARDWARE SET #21)



TYPICAL DOORS: 336A, 343, 346A & 348A
 (DOOR HARDWARE SET #22)



TYPICAL DOORS: 108A, 129, 239, 269A, 269B & 334
 (DOOR HARDWARE SET #24)



TYPICAL DOORS: 330
 (DOOR HARDWARE SET #30)

Security 101
 Promoting People, Protecting Assets
 JMK Systems Integrations
 DBA Security 101
 526 Lakeside Dr., Ste. E,
 Mobile, AL 36683

UNIVERSITY OF SOUTHERN MISSISSIPPI
GREENS HALL ACCESS CONTROL SYSTEMS

HATTESBERG, MS
 JOB NO: 22-45 DATE: 7/15/2019
 DRAWN BY: [Signature] CHECKED BY: [Signature]

SHEET TITLE:
3RD FLOOR ACCESS CONTROL PLAN

DRAWING NUMBER:
SEC-3

SHEET No: 1 of 3