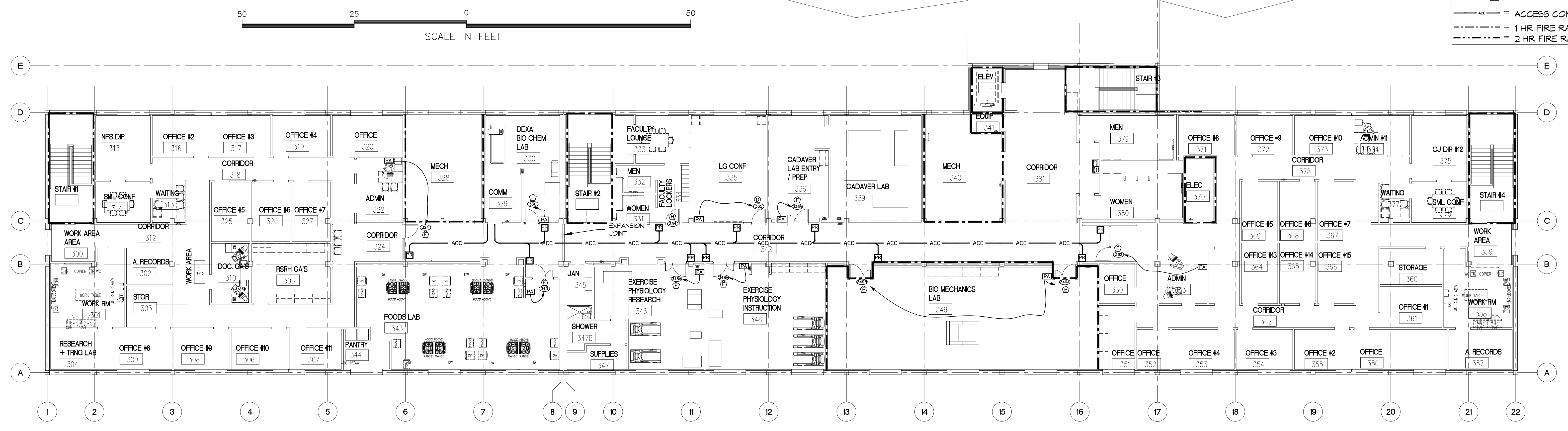
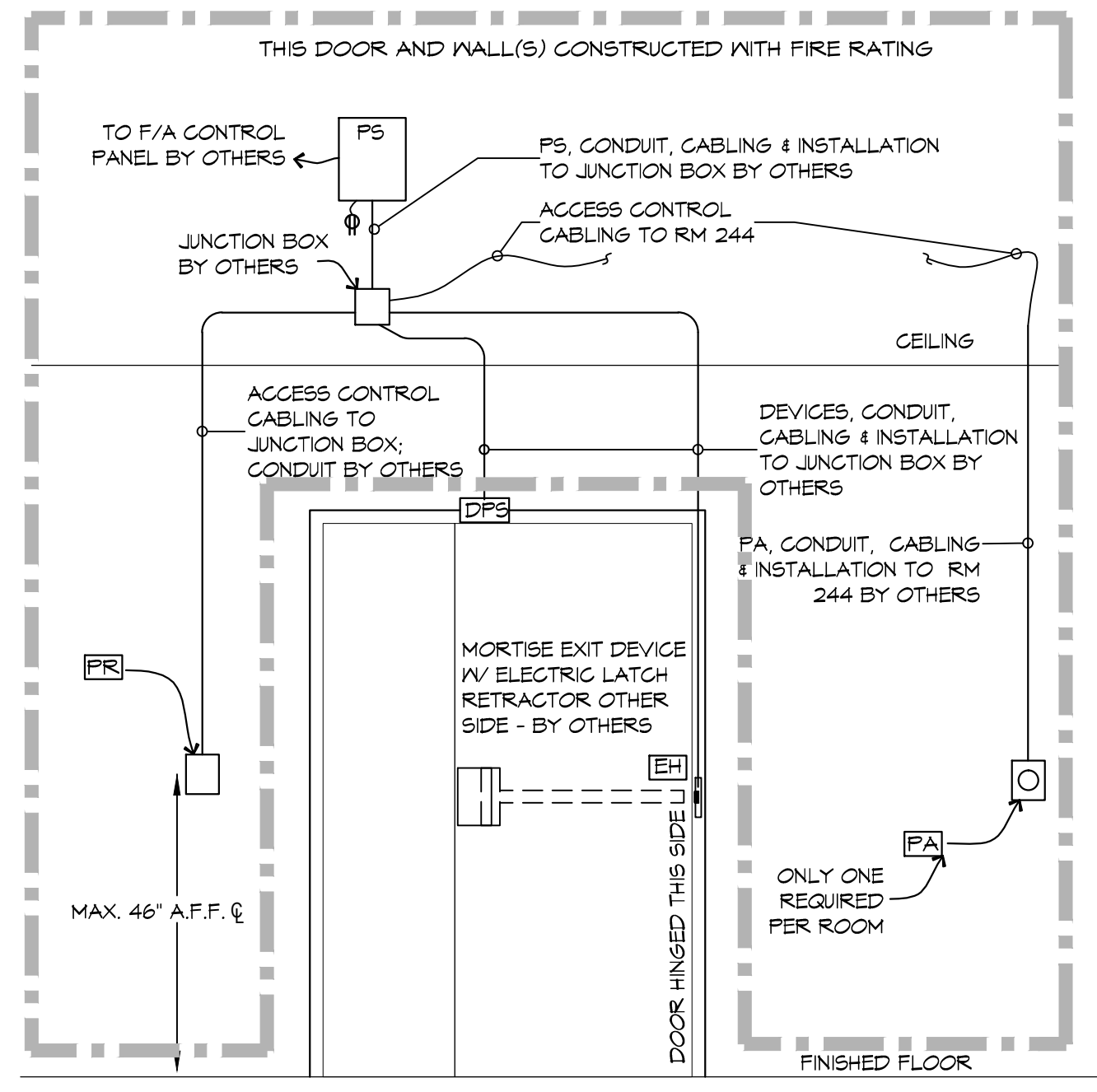


**ACCESS CONTROL SYMBOL LEGEND**

|     |   |
|-----|---|
| PR  | = HID READER  |
| PB  | = HANDICAP PUSH BUTTON, BY OTHERS.                    |
| PA  | = PUSH BUTTON TO LOCK DOORS, BY OTHERS.               |
| →   | = ARROW INDICATES DOOR(S) THAT PUSH BUTTON LOCKS DOWN |
| 214 | = DOOR NUMBER   |
| E   | = HID READER  |
| --- | = ACCESS CONTROL CABLING                              |
| --- | = 1 HR FIRE RATED WALL                                |
| --- | = 2 HR FIRE RATED WALL                                |



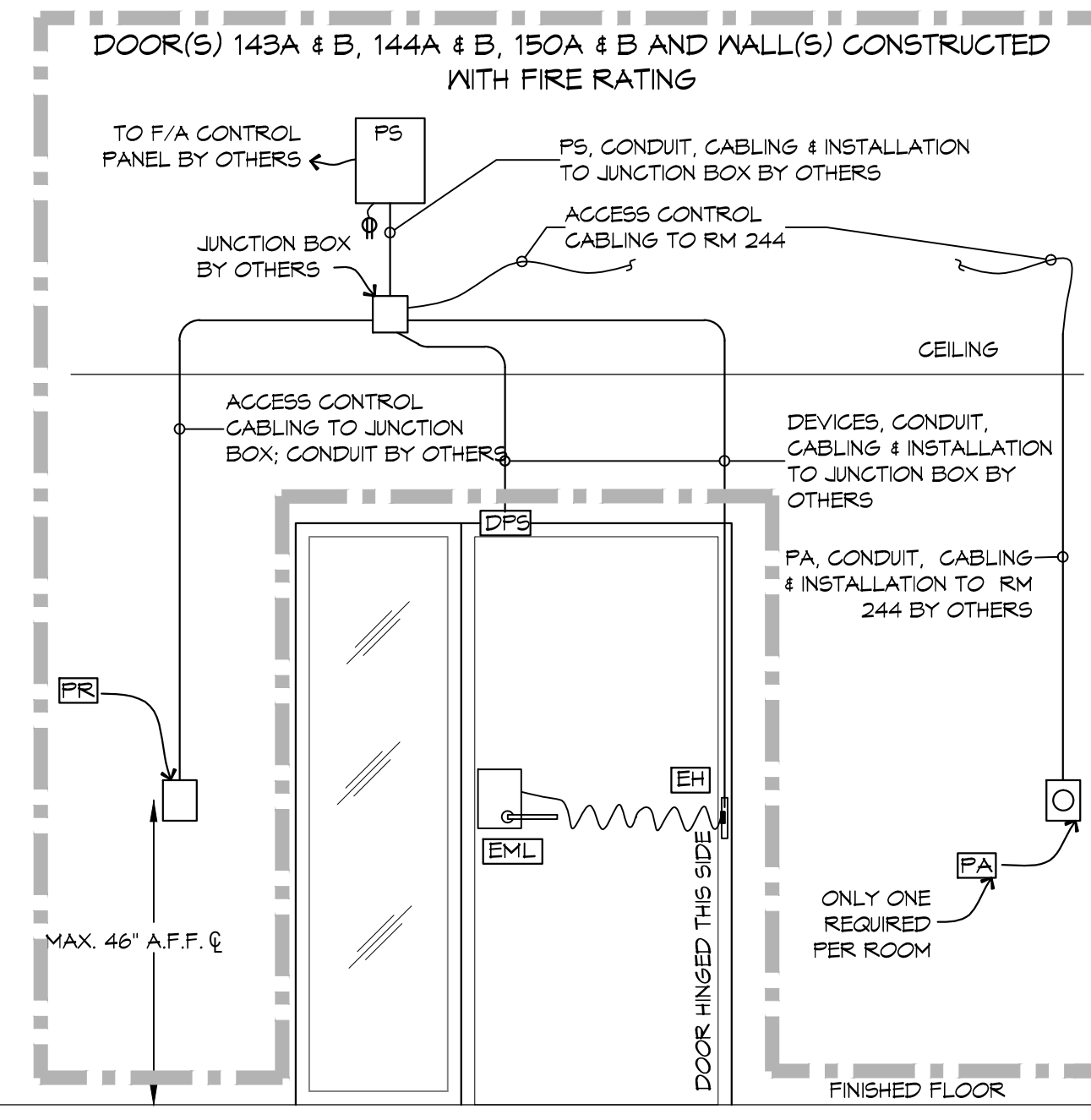
**1 3rd FLOOR**  
 SCALE: 3/32" = 1'-0"



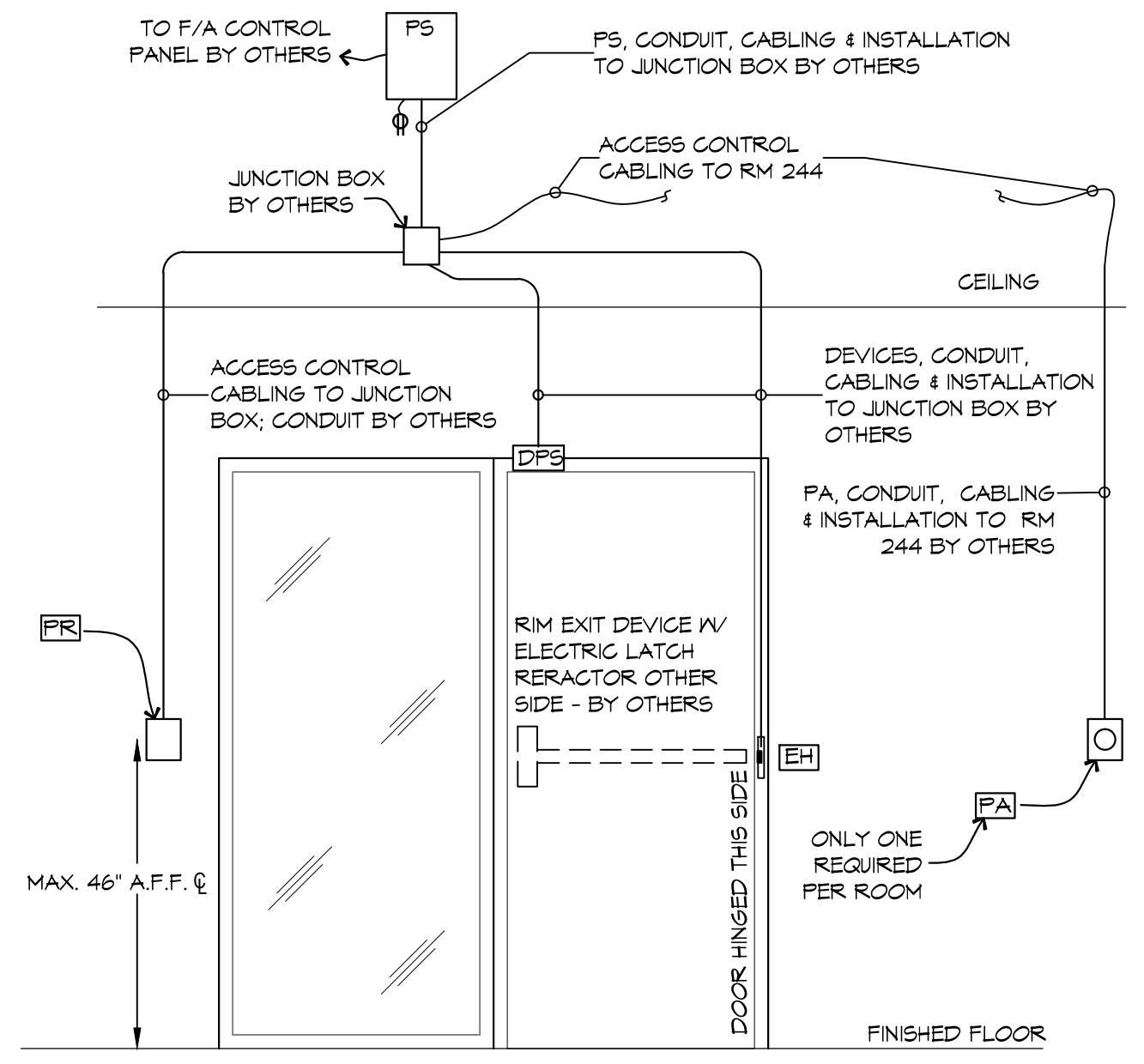
**TYPICAL DOORS: 349A & 349B**  
 (DOOR HARDWARE SET #14)

**DOOR ACCESS CONTROL LEGEND**

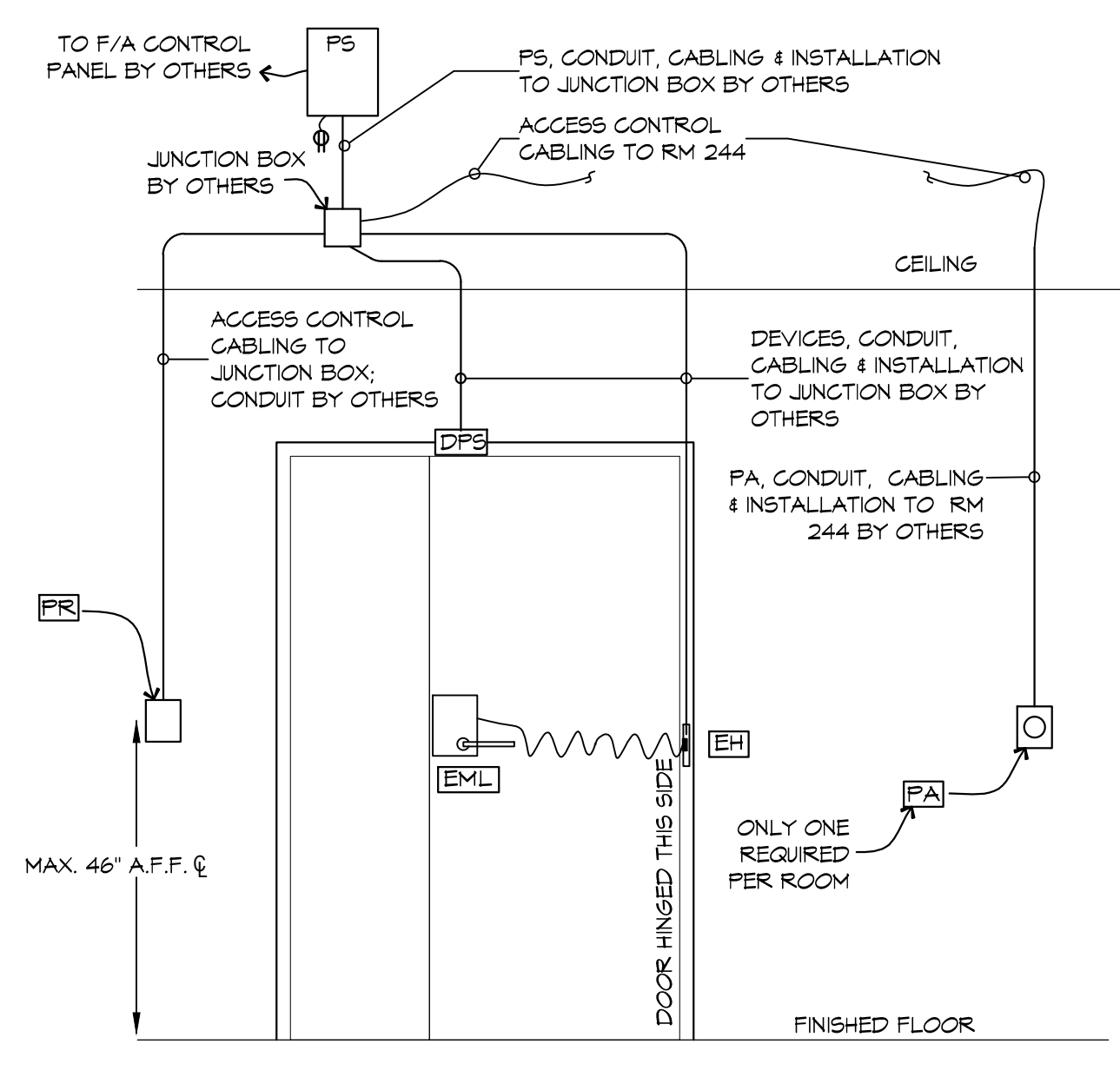
| SYMBOL | DESCRIPTION  | MOUNTING         |
|--------|--|------------------|
| △      | DOOR DETAIL DESIGNATION  |                  |
| DPSS   | DOOR POSITION SWITCH (SUPPLIED & INSTALLED BY OTHERS)  | BY OTHERS        |
| EH     | ELECTRIC POWER TRANSFER HINGE (SUPPLIED & INSTALLED BY OTHERS)                               | BY OTHERS        |
| EL     | RIM EXIT DEVICE WITH ELECTRIC LATCH RETRACTOR (SUPPLIED & INSTALLED BY OTHERS)               | BY OTHERS        |
| EML    | ELECTRIFIED MORTISE LOCK (SUPPLIED & INSTALLED BY OTHERS)                                    | BY OTHERS        |
| ES     | ELECTRIC STRIKE (SUPPLIED & INSTALLED BY OTHERS)   | BY OTHERS        |
| MP     | MORTISE EXIT DEVICE WITH ELECTRIC LATCH RETRACTOR (SUPPLIED & INSTALLED BY OTHERS)           | BY OTHERS        |
| MS     | MOTION SENSOR (SUPPLIED & INSTALLED BY OTHERS)   | BY OTHERS        |
| PA     | PUSH BUTTON EMERGENCY LOCK NEAR PODIUM OR IN ADJACENT SPACE (SUPPLIED & INSTALLED BY OTHERS) | BY OTHERS        |
| PB     | ADA PUSH BUTTON (SUPPLIED & INSTALLED BY OTHERS)   | BY OTHERS        |
| PO     | AUTO DOOR OPERATOR (SUPPLIED & INSTALLED BY OTHERS)  | BY OTHERS        |
| PR     | HID ICLASS 922 PROXIMITY READER  | WALL MAX. 46\"/> |
| PS     | POWER SUPPLY (SUPPLIED & INSTALLED BY OTHERS)  | BY OTHERS        |



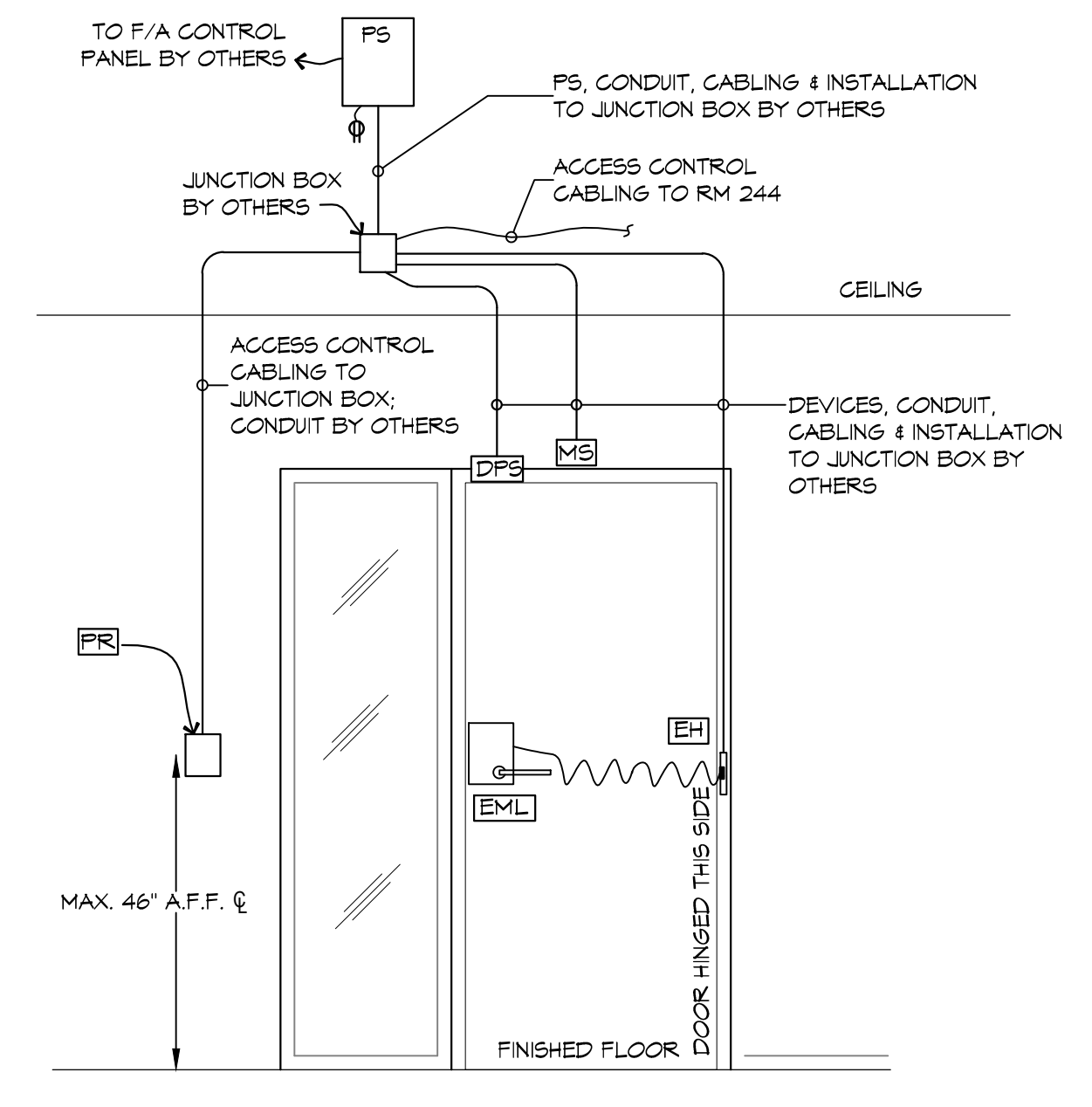
**TYPICAL DOORS: 133, 139, 140A, 140B, 143A, 143B, 144A, 144B, 150A, 150B, 230, 243, 245 & 335**  
 (DOOR HARDWARE SET #15)



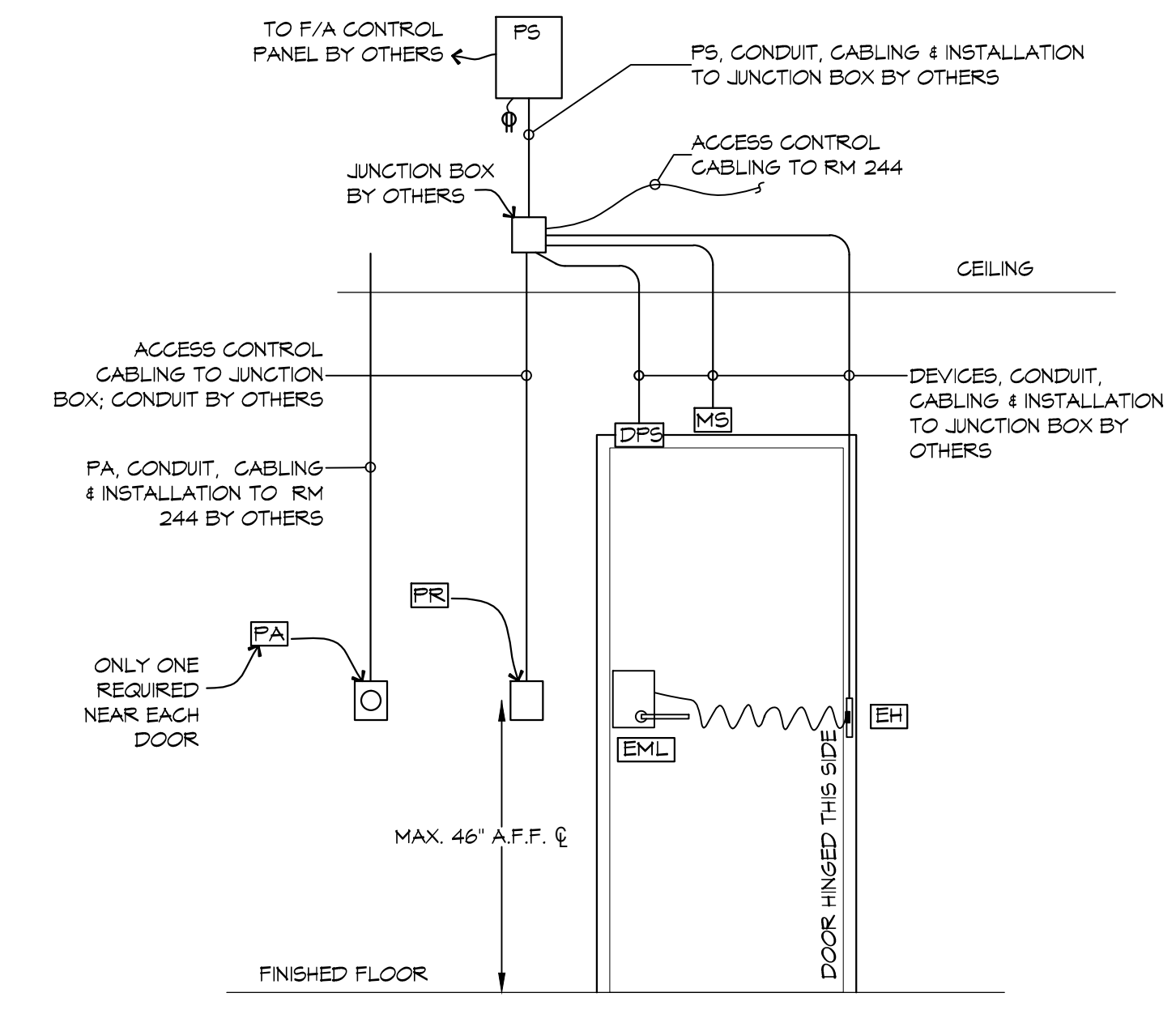
**TYPICAL DOORS: 115, 214, 216, 268A, 324 & 362**  
 (DOOR HARDWARE SET #21)



**TYPICAL DOORS: 336A, 343, 346A & 348A**  
 (DOOR HARDWARE SET #22)



**TYPICAL DOORS: 108A, 129, 239, 269A, 269B & 334**  
 (DOOR HARDWARE SET #24)



**TYPICAL DOORS: 330**  
 (DOOR HARDWARE SET #30)

**Security 101**  
 Promoting People, Protecting Assets  
 JMK Systems Integrations  
 DBA Security 101  
 526 Lakeside Dr., Ste. E,  
 Mobile, AL 36683

**UNIVERSITY OF SOUTHERN MISSISSIPPI**  
**GREENS HALL ACCESS CONTROL SYSTEMS**

HATTESBERG, MS  
 JOB NO: 22-45 DATE: 7/15/2019  
 DRAWN BY: [ ] CHECKED BY: [ ]

SHEET TITLE:  
**3RD FLOOR ACCESS CONTROL PLAN**

DRAWING NUMBER:  
**SEC-3**

SHEET No: 1 of 3