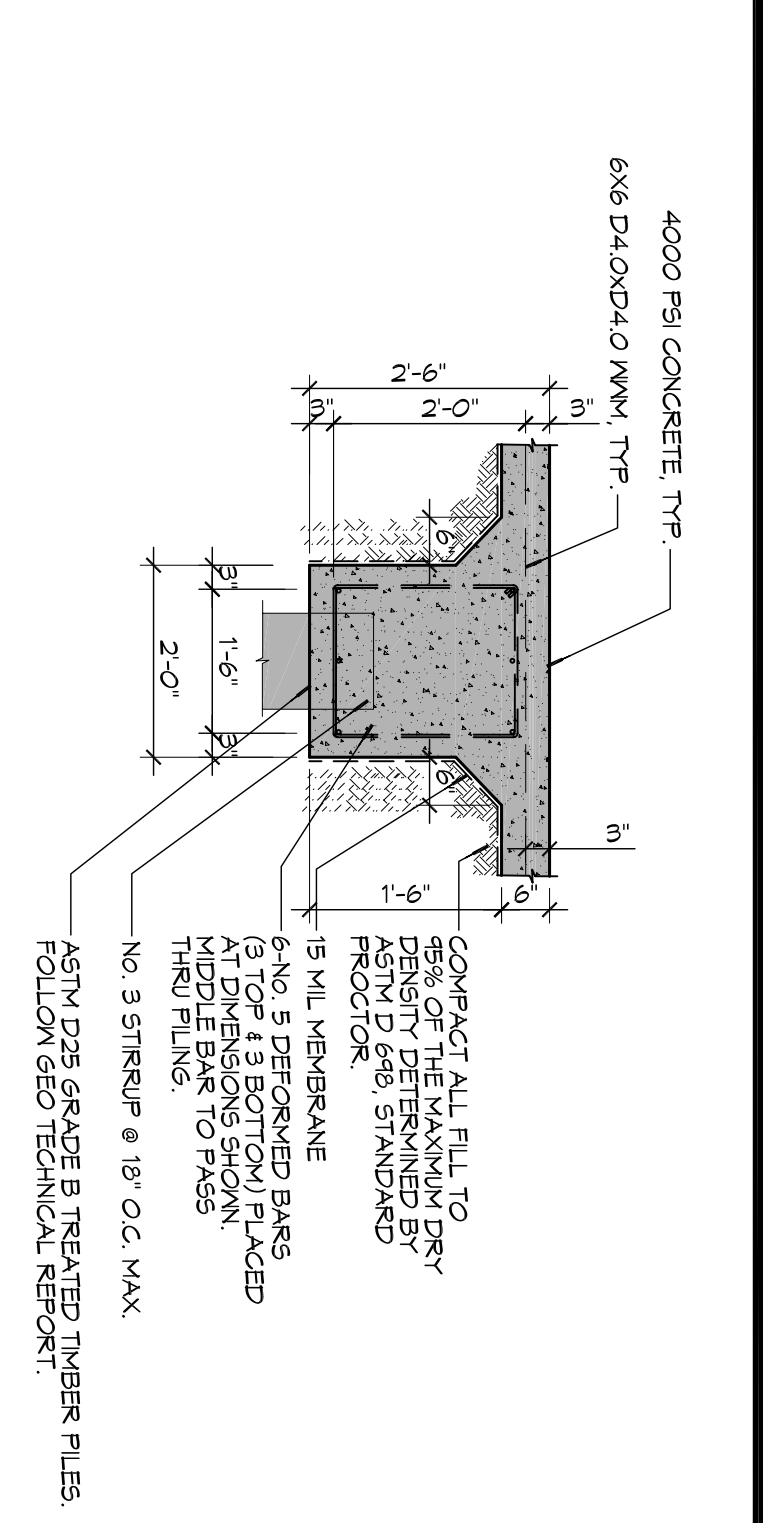
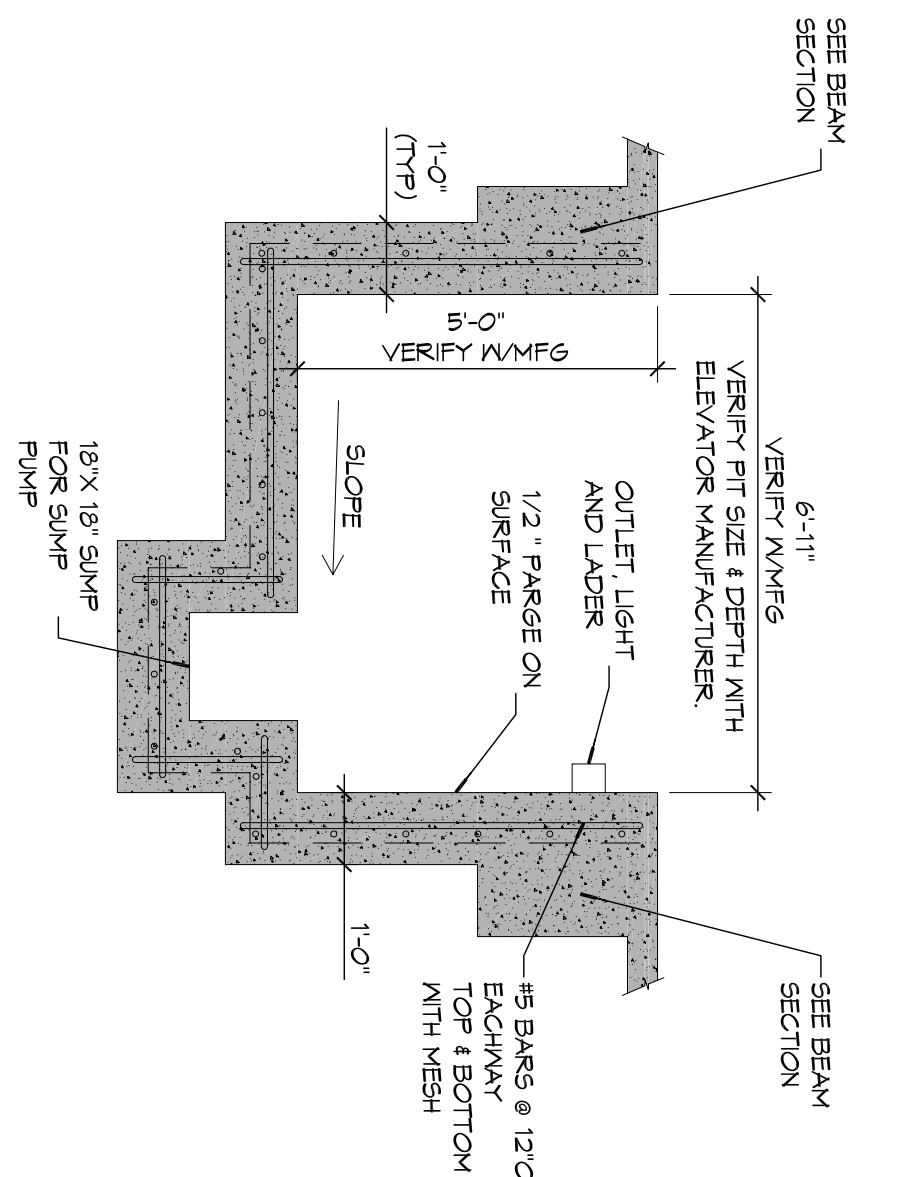


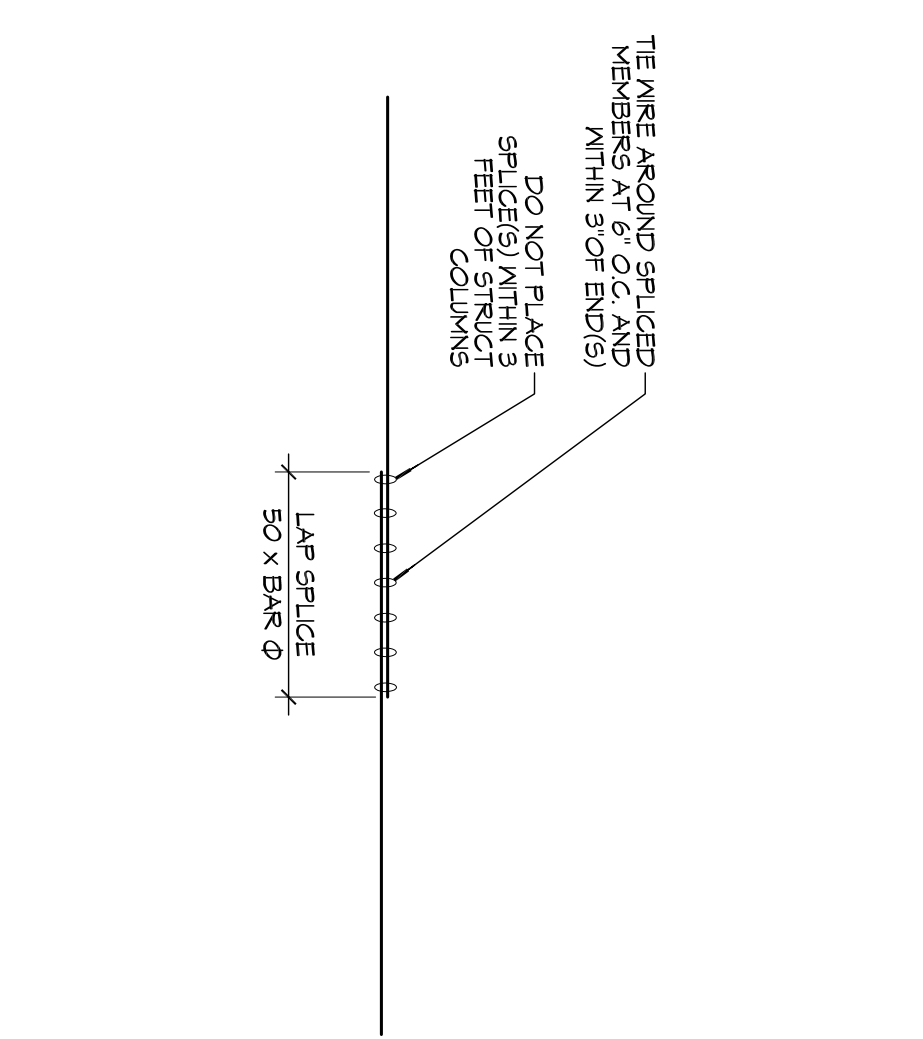
A FOUNDATION SECTION
SCALE: 1/2" = 1'-0"
EXTERIOR LOAD BEARING GRADE BEAM



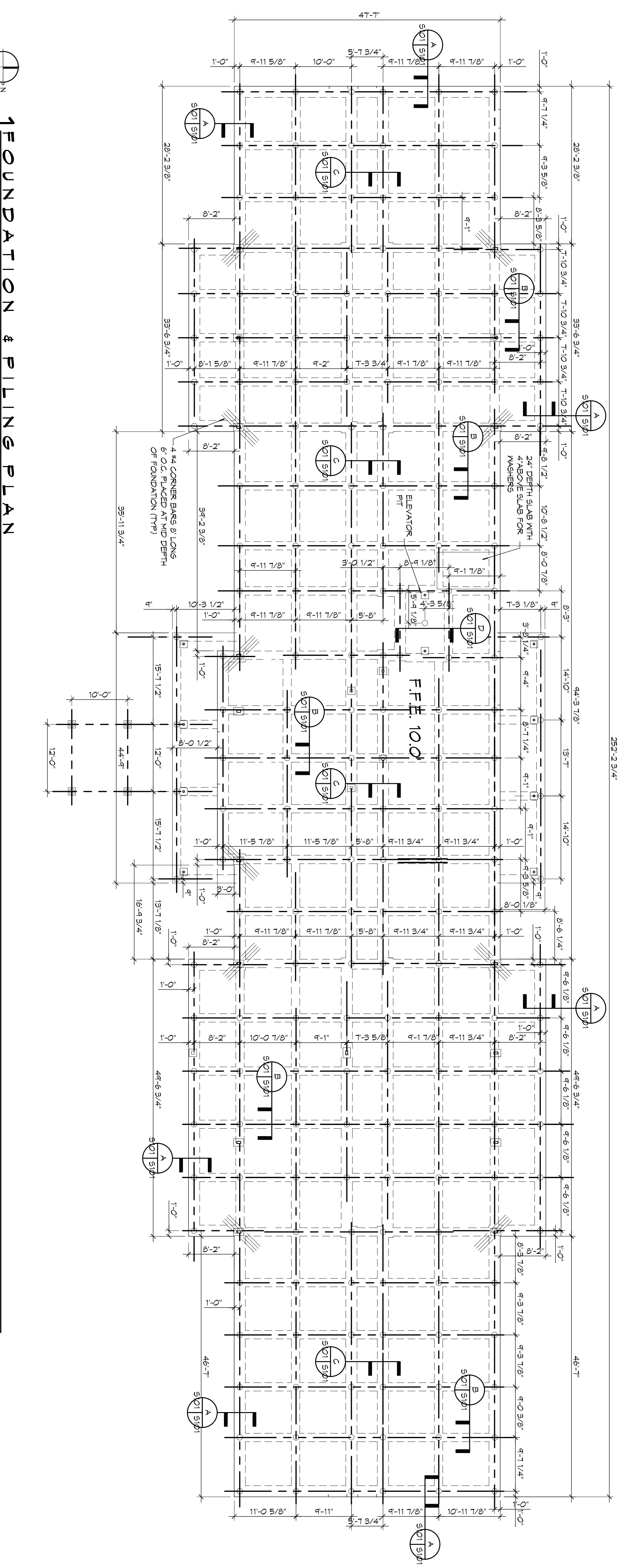
C FOUNDATION SECTION
SCALE: 1/2" = 1'-0"
INTERIOR LOAD BEARING GRADE BEAM



D FOUNDATION SECTION
SCALE: 1/2" = 1'-0"
ELEVATOR PIT



E SPLICE CONNECTION
SCALE: 1/2" = 1'-0"



FOUNDATION & PILING PLAN
SCALE: 3/32" = 1'-0"

PILING NOTES

1. TIE-BAR QUALITY, INSTALLATION, INSTALLATION MONITORING, AND PILE TESTING PROGRAM SHALL BE IN STRICT ACCORDANCE WITH THE TESTING AND INSPECTION PLAN (TIP) AND THE GEOTECHNICAL ENGINEERING REPORT BY DANIEL J. HODDER, P.E. (DJE) FILE NO. 15-063, DATED AUGUST 22, 2015.
2. PILES ARE TO BE ASTM D25 GRADE B TIE-BAR PILES, TREATED UNLESS OTHERWISE NOTED.
3. NO FIELD SUPERVISION OR INSPECTION PROVIDED UNDER THIS SEAL UNLESS OTHERWISE NOTED.
4. ENGINEER TO BE NOTIFIED OF ANY MODIFICATION.
5. ALL PILE BLOW COUNT LOGS OF ALL PILES TO BE SUBMITTED TO THE BUSINESS OF ALL RESPONSIBLE TO SUBMIT AND LOG WILL RELEASE THE CONTRACTOR IS RESPONSIBLE FOR THE COMPARISON (VERIFICATION) OF PILE LAYOUT DIMENSIONS WITH MOST RECENT ARCHITECTURAL DRAWINGS, REGARDING THAT PILES DO FALL WITHIN LIMITS OF THE DESIGN.
6. FILL, AS A MINIMUM QUALITY, SHALL BE 40% CLAY AND 60% SANDY MIXTURE PLACED IN 6" LIFTS AND COMPACTED TO A MINIMUM OF 95% STANDARD PROCTOR. ALL SLAB ON GRADES SHALL BE UNDERLAIN BY A MINIMUM 6" LAYER NO. 57 LIMEONE FOOTINGS ARE DESIGNED TO USE A MINIMUM 6" LAYER PRESURE OF 1000 P.S.F. FOR CONTINUOUS FOOTINGS.

GENERAL FOUNDATION NOTES

1. ALL DIMENSIONS ARE EDGE OF CONCRETE (EOC) TO EDGE OF CONCRETE (EOC) UNLESS NOTED OTHERWISE.
2. VERIFY ALL PILING ROUGH-IN LOCATIONS ON ARCHITECTURAL DWGS.
3. CONCRETE MIX SHALL HAVE A MINIMUM COMPRESSIVE STRENGTH OF 4000 PSI AT 28 DAYS. CONCRETE MIX SHALL BE IN ACCORDANCE WITH AC-308.
4. ALL CONVENTIONAL REINFORCING STEEL SHALL MEET ASTM-A615 (GRADE 60).
5. ONE LAYER OF POLYETHYLENE VAPOUR BARRIER SHALL BE PLACED UNDER ALL CONCRETE FLOORS AND BE MINIMUM 0.01 IN THICKNESS. EQUAL TO STEGO INDUSTRIES STEGO VAPOR ESCHELDED 15 MIL BY PERGO OR ROLBAR 15 BY FLATIRON FILMS. PROVIDE APPROPRIATE ACCESSORIES FOR A COMPLETE SYSTEM.
6. ALL REINFORCING STEEL AND WESH SHALL BE SECURELY SUPPORTED TO PREVENT BOTH VERTICAL AND HORIZONTAL MOVEMENT DURING CONCRETE PLACEMENT.
7. THE CONTRACTOR SHALL VERIFY ALL DIMENSIONS, OFFSETS, BRICK LEDGES, DIMENSIONS AND CONFIGURATIONS. CONTRACTOR MUST BE RESPONSIBLE FOR SAME.
8. GRADE BEAM DIMENSIONS MAY VARY BY -5%, +20%.
9. ALL SOIL BELOW SLAB SHALL RECEIVE TERMITTE TREATMENT.
10. CONTRACTOR SHALL PROVIDE A PROPOSAL SAW CUT CONTRACTOR JOINT LAYOUT 2 WEEKS PRIOR TO POURING THE FOUNDATION. SAW CUT JOINTS SHALL BE A MINIMUM OF 1/4 DEPTH OF THE SLAB. JOINTS SHALL BE TREATED AT A MINIMUM OF 1000 P.S.F. FOR INSTALL SAW CUT JOINTS SHALL BE PROVIDED AS SOON AS POSSIBLE, AND NOT MORE THAN 12 HOURS AFTER PLACEMENT OF CONCRETE.



REVISIONS	DATE
# DESCRIPTION	

Chief Engineer: Brian Mistleh, PE
554 Old Spanish Trail
Stidell, LA 70458

www.dammengineering.com
info@dammengineering.com
PH: 985.649.5832 F: 985.641.5950

MAINSTAY SUITES

100 MAIN STREET
LOT #1 LA HWY 27
HACKBERRY, LA 70645

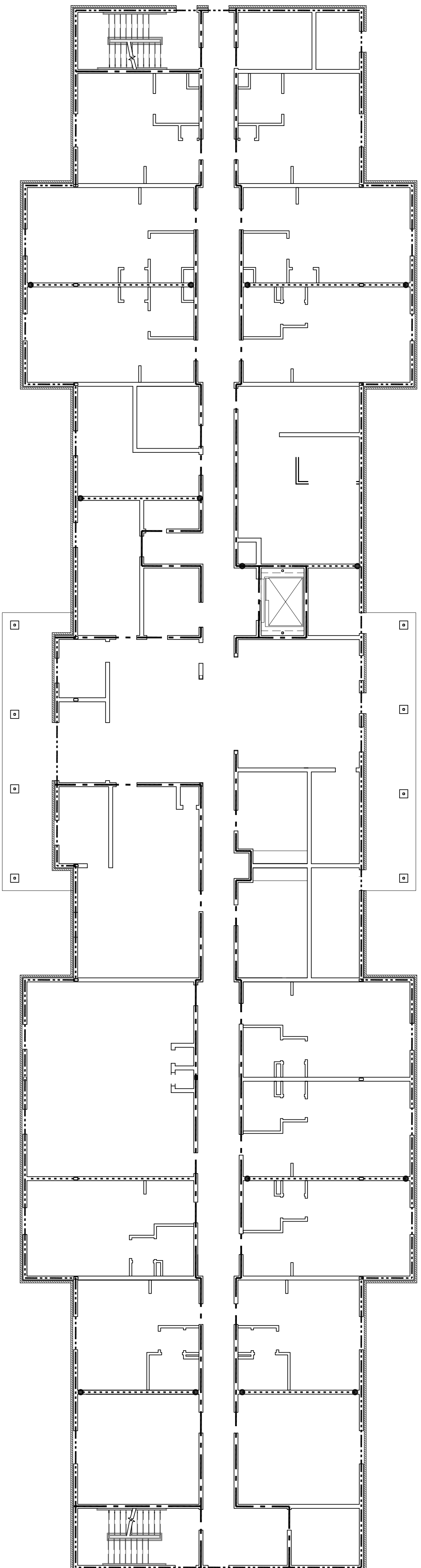
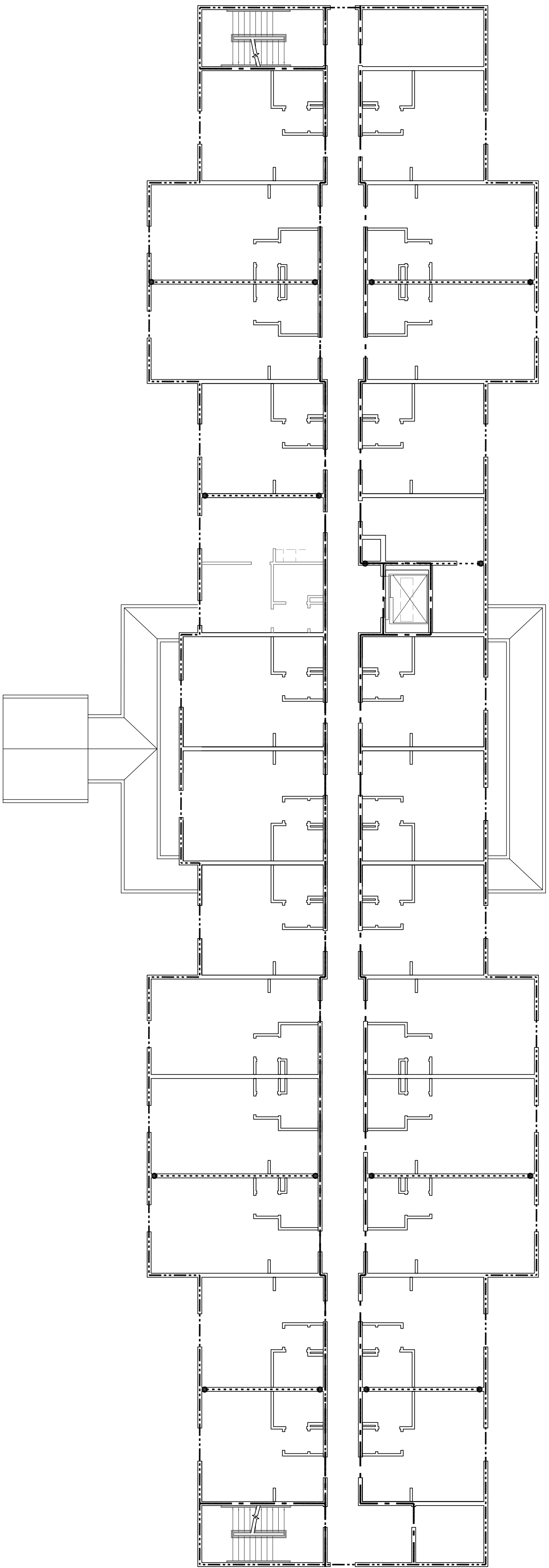
JOB No: 2265 DATE: FEBRUARY, 2016
DRAWN BY: JTL CHECKED BY: BAM

S101

FOUNDATION PLAN

FOUNDATION AND PILING PLAN

11 OF 52



LEGEND

----- BEARING WALL
 SHEAR WALL
 • PROVIDE TYPICAL STUDS AT THESE LOCATIONS

GENERAL SHEET NOTES

1. SEE SHEET S601 - TYPICAL CONNECTION DETAILS, SCHEDULES, AND NOTES FOR TYPICAL SHEET WALL CONSTRUCTION AND TYPING PATTERN

DAMMON
 ENGINEERING, INC.
 LOUISIANA & MISSISSIPPI

Chief Engineer: Brian Mistich, PE
 554 Old Spanish Trail
 Slidell, LA 70458

www.dammonengineering.com
 info@dammonengineering.com
 PH: 985.649.5832 F: 985.641.5950

REVISIONS		DATE
#	DESCRIPTION	



MAIN STAY SUITES

100 MAIN STREET
 LOT #1 LA HWY 27
 HACKBERRY, LA 70645

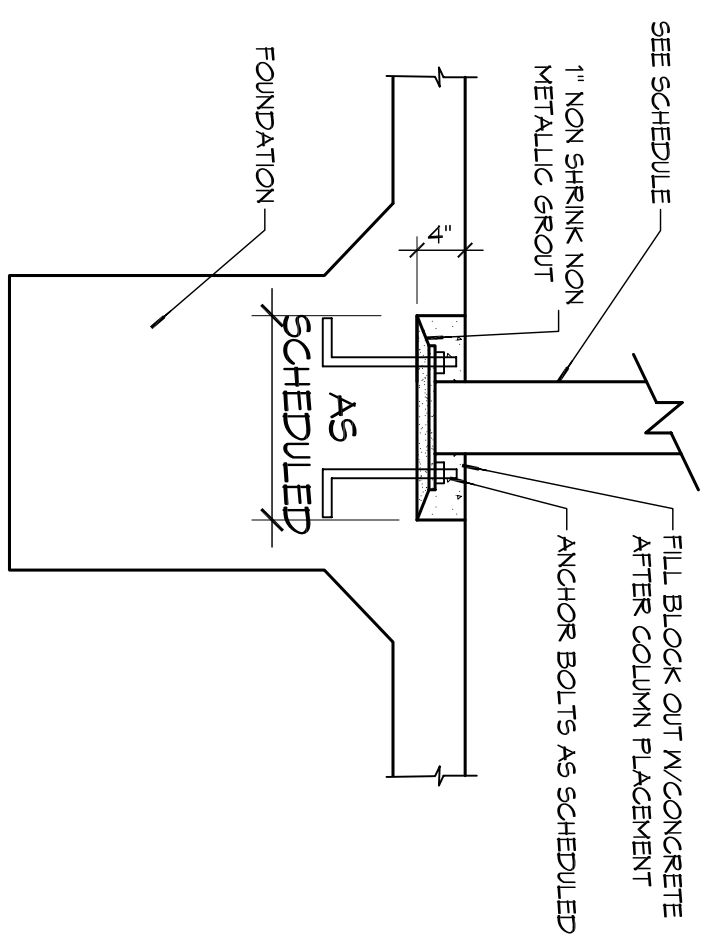
JOB No: 2265 DATE: FEBRUARY, 2016
 DRAWN BY: CKD/PHM CHECKED BY: BAM

The above drawings and specifications, design and all approvals represented hereby are prepared by the professional engineer, and the professional engineer shall be held responsible to others, or used in connection with any work or project other than the specific project for which they have been prepared and developed without written consent of Dammon Engineering. Your contact with these drawings or specifications shall constitute your acknowledgment of the above conditions. If you are not a professional engineer, you shall not be held responsible for any errors or omissions.

SHEET TITLE:
 SHEAR AND BEARING WALL LAYOUTS

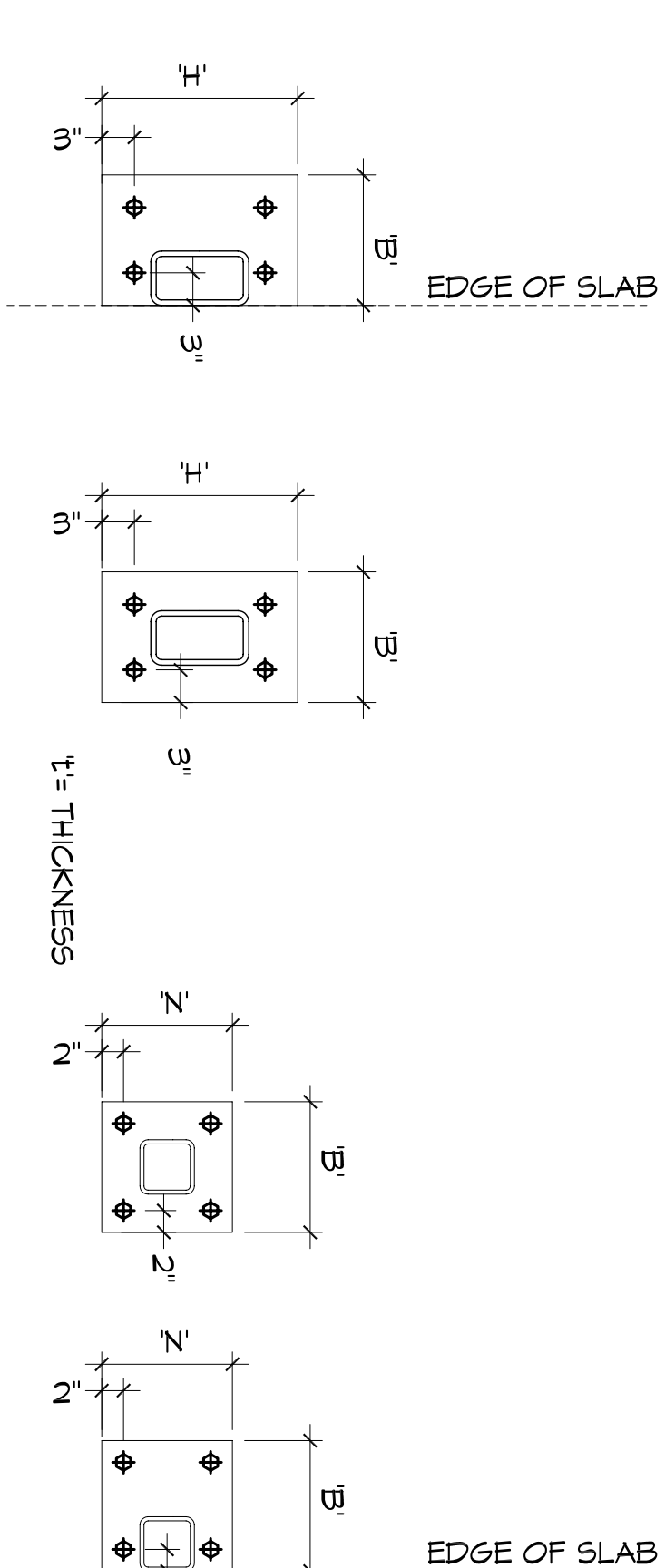
DRAWING NUMBER:
S102

SHEET No: 12 of 52



3 COLUMN BASE

SCALE: 3/4"=1'-0"



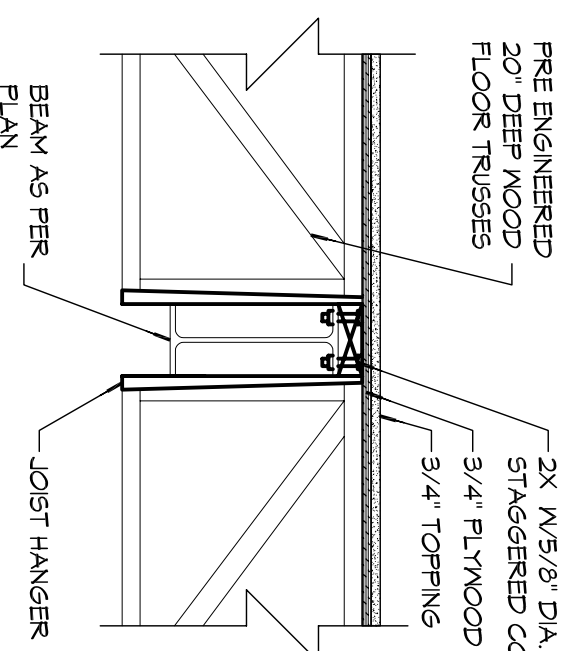
DESIGNATION	COLUMN SIZE	B' (in.)	H' (in.)	T' (in.)	ANCHOR BOLT
C1	H55 4X4X1/4"	12"	12"	0.375"	(4) 1/2"X12" ANCHOR BOLT W/3" HOOK
C2	H55 4X4X1/4"	12"	12"	0.375"	(4) 3/4"X12" ANCHOR BOLT W/3" HOOK
C3	H55 4X5X1/6"	12"	16"	0.375"	(4) 3/4"X16" ANCHOR BOLT W/3" HOOK
C4	H55 6X6X1/4"	12"	12"	0.5"	(4) 3/4"X16" ANCHOR BOLT W/3" HOOK

5 STANDARD BASE PLATE CONNECTIONS

SCALE: 3/4"=1'-0"

MARK	SIZE	BASE PLATE
C1	H55 5X5X5/16	12X12X1
C2	H55 4X4X1/4	7X7X3/4
C3	H55 5X5X1/2	AS166
C4	6X6 WOOD POST	AS166

MARK	SIZE	BASE PLATE
ML1	THREE 2X12	
ML2	TWO 1.5X7X1/4" LVL W/ 1/4"	
ML3	THREE 1.5X7X1/8" LVL W/ 1/4"	
ML4	NON-LOAD BEARING LINTELS	

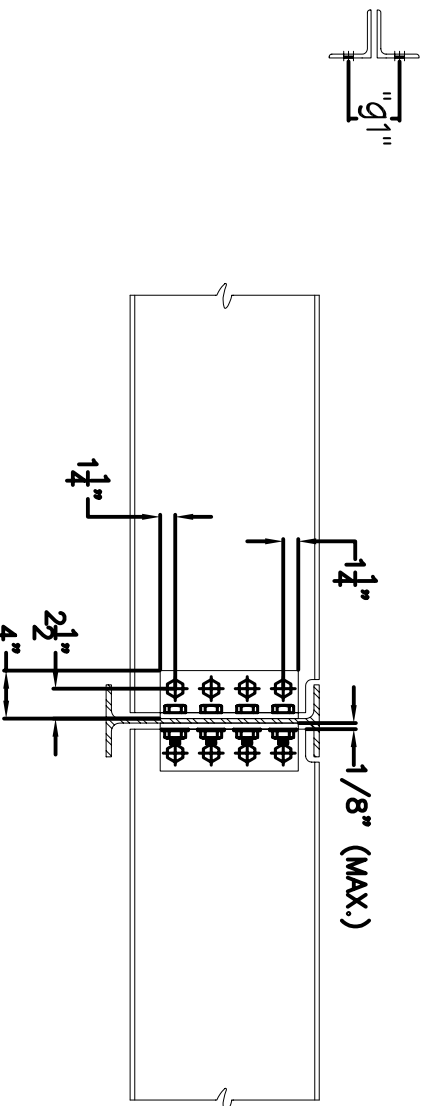


2 TRUSS TO BEAM CONNECTION

SCALE: 3/4"=1'-0"

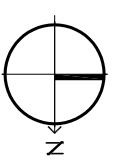
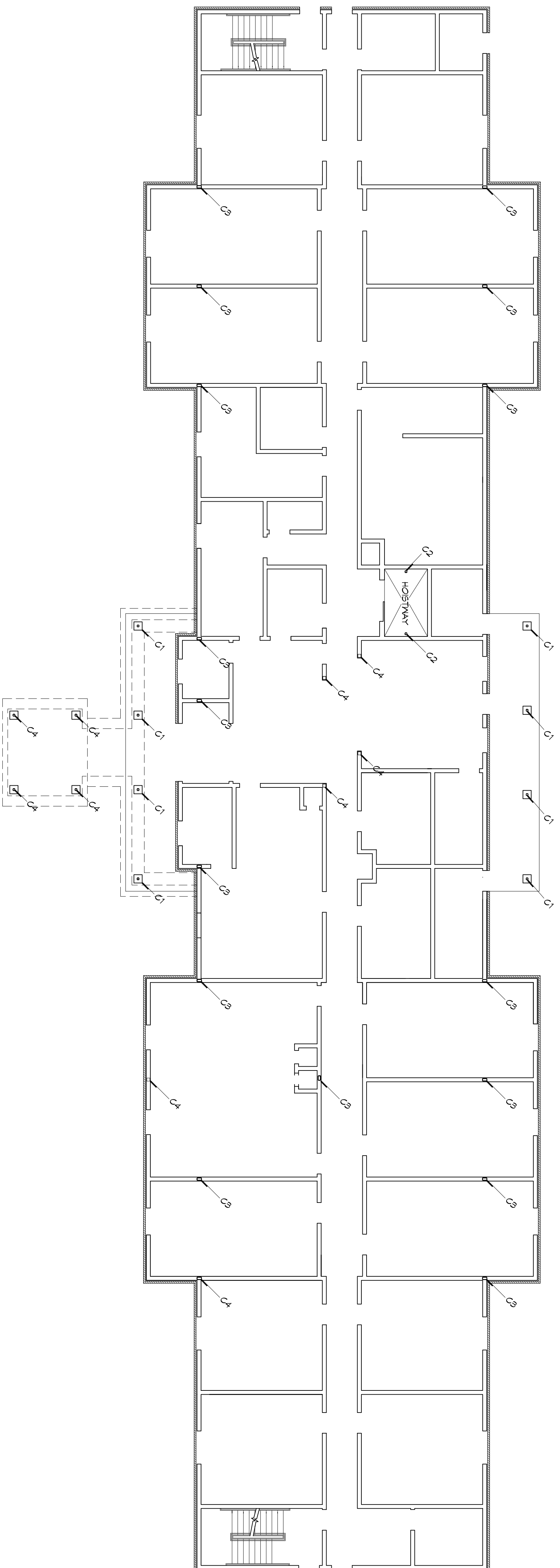
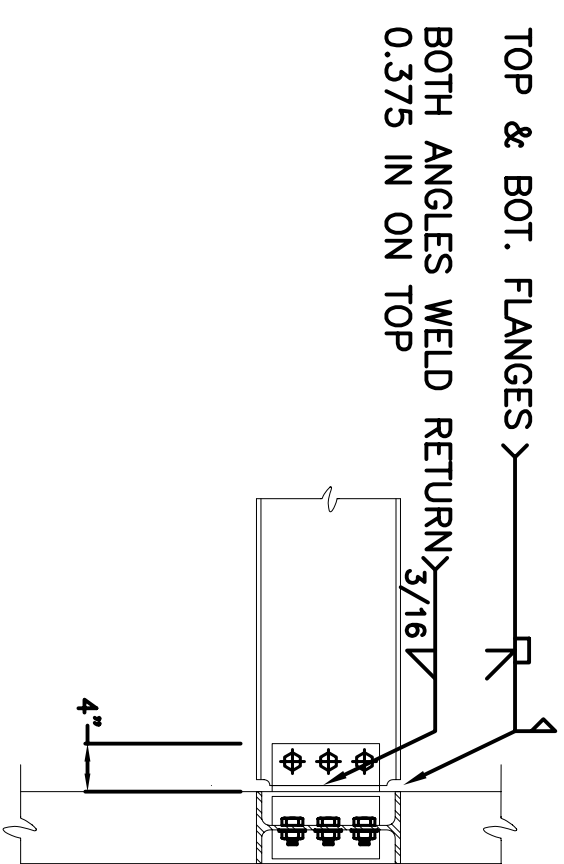
BEAM SIZE	ANGLE SIZE	"L" (in.)	"n" (BOLTS)	"g1" (in.)
WB 8 M10	L. 4X3/8X3/8	5 1/2	2	4
M12 & M14	L. 4X3/8X3/8	8 1/2	3	4
M24	L. 4X3/8X3/8	20 1/2	7	4

BOLTS TO BE W/WD A325 (UNO)
"n" = # OF ROWS OF BOLTS @ 3" C/C



4 STANDARD BEAM CONNECTIONS

SCALE: 3/4"=1'-0"

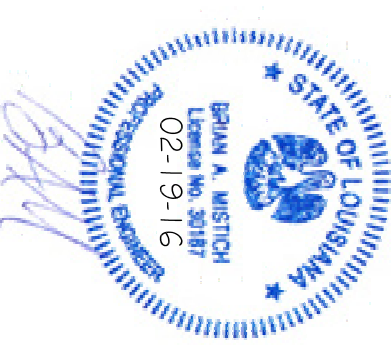


SCALE: 3/32"=1'-0"



Chief Engineer: Brian Mistich, PE
554 Old Spanish Trail
Stidell, LA 70458
www.dammoneengineering.com
info@dammoneengineering.com
PH: 985.649.5832 F: 985.641.5950

#	DESCRIPTION	DATE



MAINSTAY SUITES

100 MAIN STREET
LOT #1 LA HWY 27
HACKBERRY, LA 70645

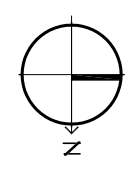
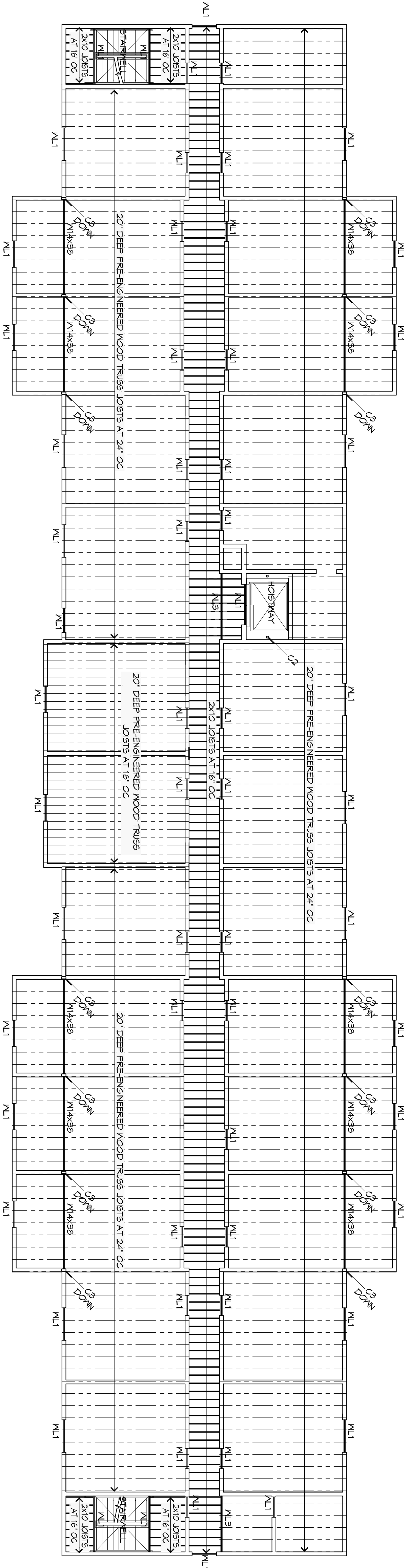
JOB No: 2265 DATE: FEBRUARY, 2016
DRAWN BY: CKD/JTL CHECKED BY: BAM

The above drawings and specifications, design and engineering are the property of Dammon Engineering, Inc. and shall remain the property of Dammon Engineering, Inc. and no part thereof shall be copied, reproduced, or used in connection with any work or project other than the specific project for which they have been prepared and approved without written consent of Dammon Engineering, Inc. Please contact with those drawings or specifications that constitute the contract.

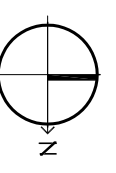
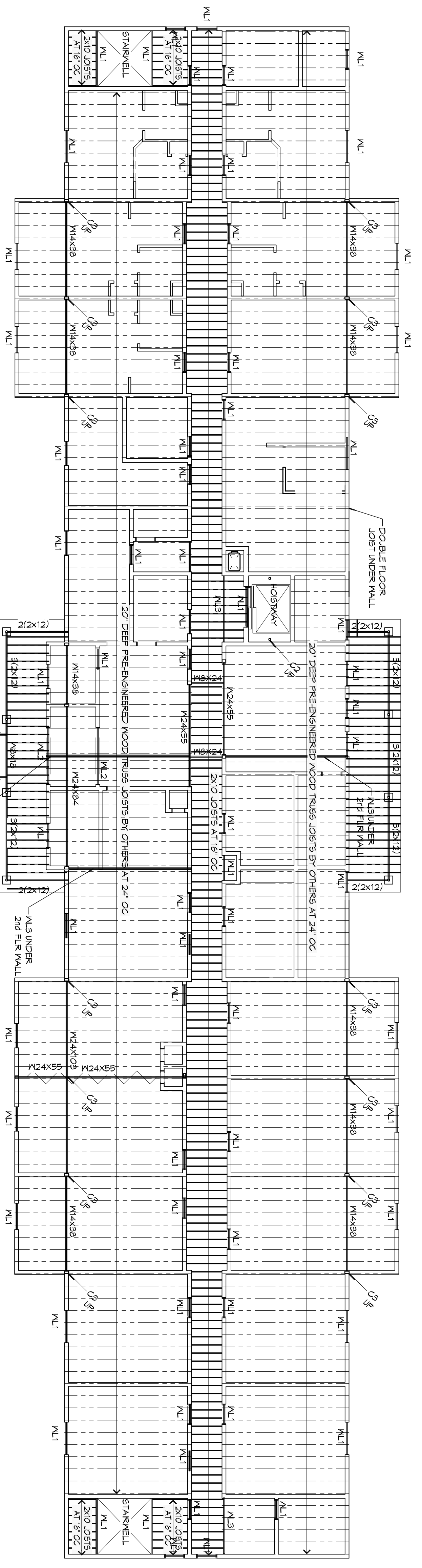
SHEET TITLE:
COLUMN LAYOUT PLAN - LEVEL 1

DRAWING NUMBER:
5103

SHEET No: 13 OF 52



2 FLOOR FRAMING PLAN - LEVEL 3
SCALE: 3/32" = 1'-0"



1 FLOOR FRAMING PLAN - LEVEL 2
SCALE: 3/32" = 1'-0"

GENERAL SHEET NOTES

1. ALL PLUMBING CHASES AND OTHER CHUTES SHALL REMAIN FREE OF STRUCTURAL ELEMENTS AND OTHER OBSTRUCTIONS FOR THE ENTIRETY OF ITS HEIGHT. INSTALL HEADERS AS NECESSARY TO PROVIDE ADEQUATE SUPPORT FOR ALL FLOOR/CEILING ASSEMBLIES.
2. SEE SHEET S104 FOR COLUMN AND LINTEL SCHEDULES.

LEGEND

- PRE-ENGINEERED WOOD TRUSS JOIST
- 2X WOOD JOIST - SEE FRAMING PLAN FOR SIZE AND SPACING
- 2X WOOD HEADER
- PLUMBING CHASE CHUTE, OR HOISTWAY

DAMMON ENGINEERING, INC.
LOUISIANA & MISSISSIPPI

Chief Engineer: Brian Mistich, PE
554 Old Spanish Trail
Slidell, LA 70458
www.dammoneengineering.com
info@dammoneengineering.com
PH: 985.649.5832 F: 985.641.5950

REVISIONS		DATE
#	DESCRIPTION	



MAINSTAY SUITES
100 MAIN STREET
LOT #1 LA HWY 27
HACKBERRY, LA 70645

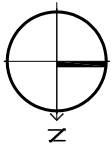
JOB No: 2265 DATE: FEBRUARY, 2016
DRAWN BY: JHM CHECKED BY: BAM

The above drawings and specifications, designs and all engineering registered hereby is and shall remain the property of Dammon Engineering, and no part thereof shall be copied, reproduced, or used in connection with any work or project other than the specific project for which the same have been prepared and developed without written consent of Dammon Engineering. Please contact with those covering in specifications, shall constitute the contract.

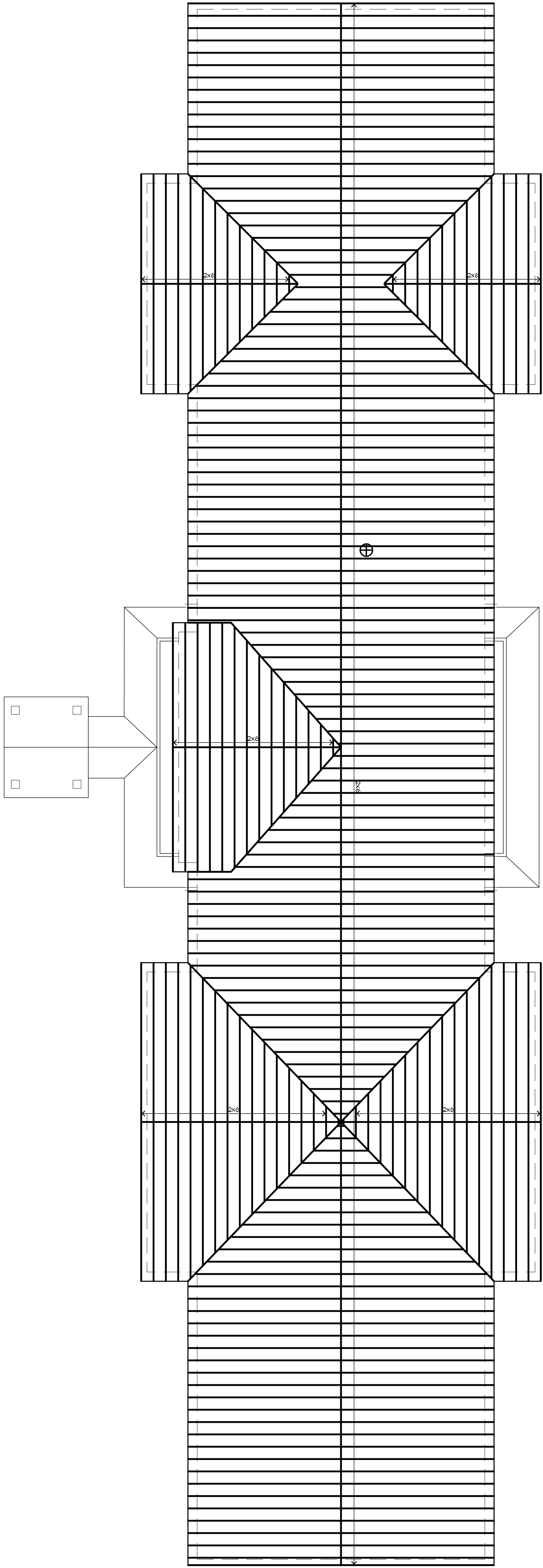
SHEET TITLE:
FLOOR FRAMING PLAN -
LEVELS 2 AND 3

DRAWING NUMBER:

S104



1 ROOF FRAMING PLAN
SCALE: 3/32" = 1'-0"



LEGEND
2x6 RAFTER/TRUSS @ 24" O.C.
SPACING, TYP. U.O.M.
⊕ LAUNDRY CHUTE VENT THRU ROOF

SHEET NO. 15 OF 52
5105
DRAWING NUMBER:

SHEET TITLE:
ROOF FRAMING PLAN

MAINSTAY SUITES

100 MAIN STREET
LOT #1 LA HWY 27
HACKBERRY, LA 70645

JOB No: 2265 DATE: FEBRUARY, 2016
DRAWN BY: WHM CHECKED BY: BAM

02-06-15

The above drawings and specifications, depth and dimensions registered hereby and not shall remain the property of Dammon Engineering, and no part thereof shall be copied, reproduced, or used in connection with any work or project other than the specific project for which it has been prepared and developed without written consent of Dammon Engineering. Please contact with these drawings or specifications shall constitute a breach of the terms and conditions of these specifications.



SEAL: _____

REVISIONS		DATE
#	DESCRIPTION	

DAMMON ENGINEERING, INC.
LOUISIANA & MISSISSIPPI

Chief Engineer: Brian Mistich, PE
554 Old Spanish Trail
Stidell, LA 70458

www.dammonengineering.com
info@dammonengineering.com
PH: 985.649.5832 F: 985.641.5950

