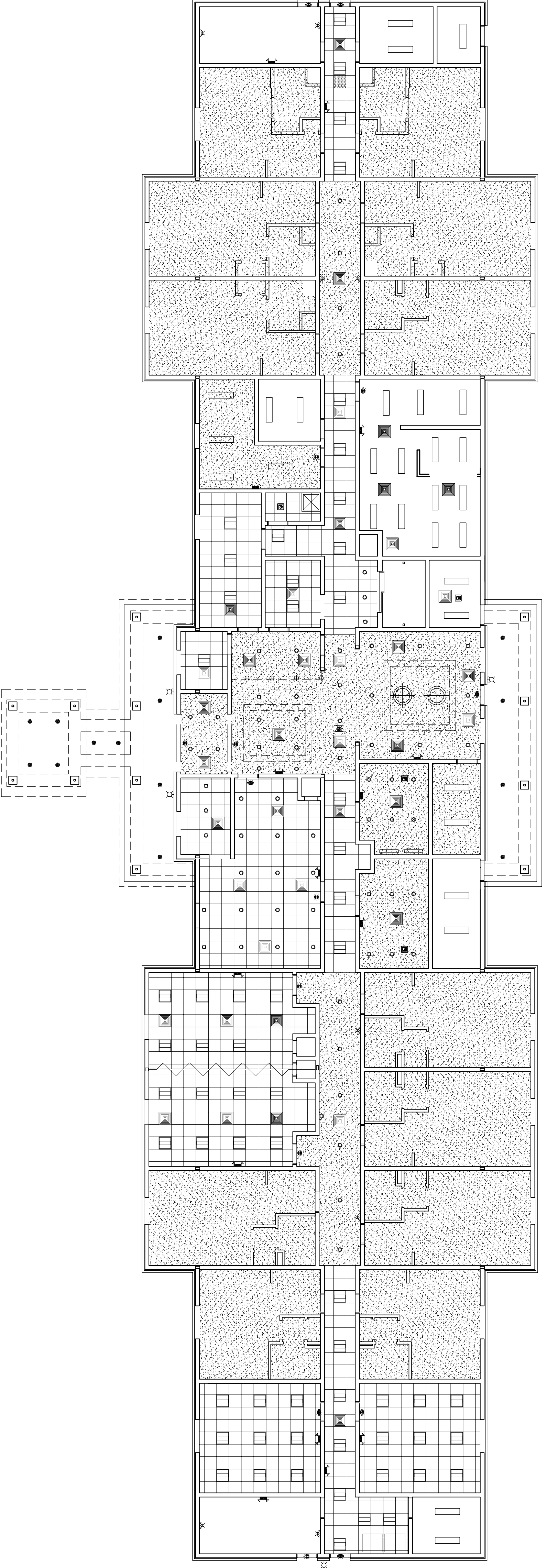


2 REFLECTED CEILING PLAN - LEVELS 2 & 3
SCALE: 3/32" = 1'-0"

25 GUESTROOMS EACH FLOOR



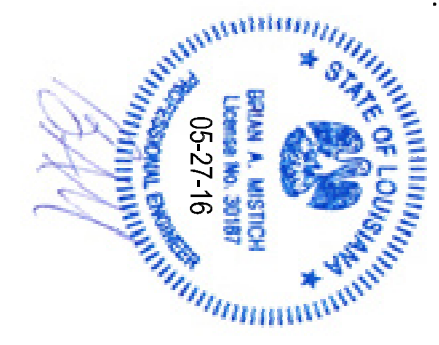
1 REFLECTED CEILING PLAN - LEVEL 1
SCALE: 3/32" = 1'-0"

12 GUESTROOMS

DAMMON
ENGINEERING, INC.
LOUISIANA & MISSISSIPPI

Chief Engineer: Brian Mistich, PE
554 Old Spanish Trail
Stidell, LA 70458
www.dammonengineering.com
info@dammonengineering.com
PH: 985.649.5832 F: 985.641.5950

REVISIONS		
#	DESCRIPTION	DATE



MAINSTAY SUITES
100 MAIN STREET
LOT #1 LA HWY 27
HACKBERRY, LA 70645

JOB No: 2265 DATE: APRIL, 2016
DRAWN BY: JTL CHECKED BY: JMS

The above drawings and specifications, except such as are expressly represented therein, are not intended to constitute a contract. It is the policy of Dammon Engineering, Inc. to not be bound by any contract or project unless the specific terms of such contract have been prepared and approved in writing by Dammon Engineering, Inc. All drawings and specifications shall conform to the standards of the American Institute of Architects, Inc. and the American Society of Mechanical Engineers, Inc. unless otherwise indicated.

SHEET TITLE:
REFLECTED CEILING
PLANS - LEVEL 1, 2 & 3.

DRAWING NUMBER:
A105

SHEET No. 21 of 52