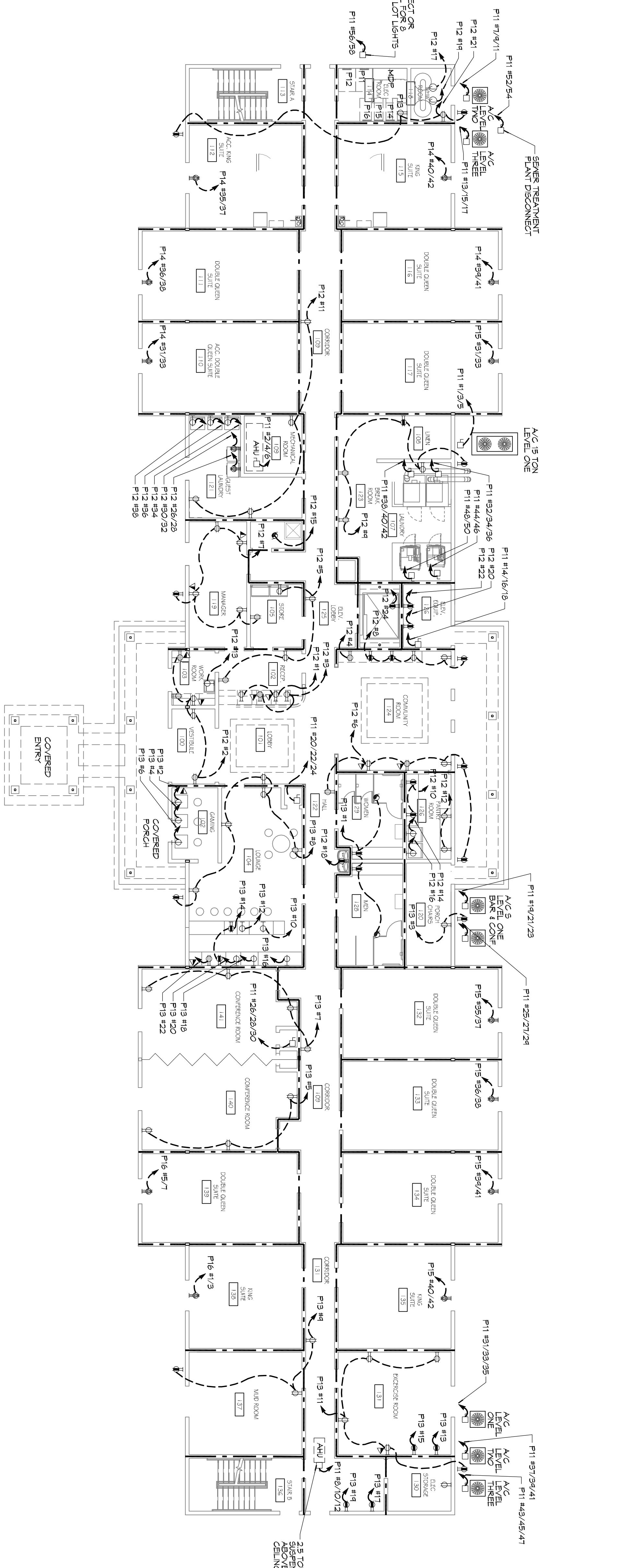


POWER PLAN - LEVELS 2 & 3
 SCALE: 3/32" = 1'-0"
 NOTE: THIS PLAN SHOWS LEVEL 2 POWER AND CIRCUITS. LEVEL 3 IS IDENTICAL TO LEVEL 2 EXCEPT ROOM NUMBERS AND CIRCUIT NUMBERS WILL BEGIN WITH '3'.
 25 GUESTROOMS EACH FLOOR



POWER PLAN - LEVEL 1
 SCALE: 3/32" = 1'-0"
 12 GUESTROOMS

ELECTRICAL LEGEND - POWER

- STANDARD 120V DUPLEX RECEPTACLE NEMA 5-0-2 OR 15V AFF (UNLESS OTHERWISE NOTED)
- SINGLE-POLE DEDICATED RECEPTACLE - REFER TO PANEL SCHEDULE FOR CIRCUIT SIZE
- 6FC DUPLEX RECEPTACLE
- 6FC GARD RECEPTACLE
- 200V DEDICATED RECEPTACLE
- 200V DEDICATED 6FC RECEPTACLE
- WEATHER-PROOF 6FC DUPLEX RECEPTACLE MOUNTED AT 30" AFF (UNLESS OTHERWISE NOTED)
- STANDARD 120V DUPLEX RECEPTACLE - FLOOR MOUNTED
- STANDARD GARD RECEPTACLE - WALL MOUNTED
- 120V/15 AMP DUPLEX B/D/C 3 AMP
- HIBELL VSB CHARGER RECEPTACLE
- 120V/15 AMP CHARGER B/D/C 3 AMP
- HIBELL VSB CHARGER RECEPTACLE
- JUNCTION BOX
- GENERATOR BATTERY CHARGER GFI OUTLET
- 2-BUTTON PUSH BUTTON STATION
- COAX-CABLE CONNECTION FOR TELEVISION
- MALL MOUNTED DATA OUTLET
- FLOOR DATA OUTLET
- POWER DISCONNECT
- GAS WATER HEATER ON DECK OR WEZANINE ABOVE - SIZE AS NOTED ON PLAN
- AS CONDITIONING AIR HANDLING UNIT ON DECK OR WEZANINE ABOVE. SEE MECHANICAL DRAWINGS FOR AIR CONDITIONING COMPRESSOR UNIT ON CONCRETE PAD. SEE MECHANICAL DRAWINGS

- NOTES:**
- CONNECT ALL EMERGENCY/EXIT LIGHT FIXTURES TO NEAREST CONSTANT POWER SOURCE.
 - THE NEXT TO THE LAST OUTLET OR DATA OUTLET DESIGNATED IN THIS PLAN SHALL BE THE LAST OUTLET OR DATA OUTLET ON THE WALL (ONE HIGH & ONE LOW ON WALL).
 - REFER TO NOTES OR ELEVATIONS FOR MOUNTING HEIGHT AND ORIENTATION OF OUTLETS MOUNTED ABOVE COUNTERTOPS.
 - ALL OUTLETS IN SITES SHALL BE AISC "FALL".

ELECTRICAL LEGEND - LIGHTING

- EMERGENCY LIGHT FIXTURE
- EXIT LIGHT FIXTURE - WALL MOUNTED
- EXIT LIGHT FIXTURE - CEILING MOUNTED
- CEILING FAN
- CLANG MTD FLOOR STRIP FIXTURE
- RECESSED CEILING LIGHT FIXTURE
- CLANG LING FLOOR STRIP FIXTURE
- SURFACE MOUNTED LIGHT FIXTURE
- MALL MOUNTED LIGHT FIXTURE
- CLANG MTD FLOOR FIXTURE
- OUTDOOR LIGHT ON GROUND
- PENDANT LIGHT FIXTURE
- EXHAUST FAN - SEE MECH
- EMERGENCY/EXIT LIGHT FIXTURES TO NEAREST CONSTANT POWER SOURCE
- CIRCUIT HOME RUN
- ELECTRIC PANEL BOARD
- MALL MTD SPEAKER - PROVIDE RATED HOUSING FOR RATED WALLS WHERE INDICATED
- CLANG MTD SPEAKER - PROVIDE RATED HOUSING FOR RATED WALLS WHERE INDICATED
- REFER TO ENGINEER(S) NOT SHOWN - SEE NOTE
- ★ LIGHT SWITCH - 120V COMMERCIAL GRADE
- Ⓢ LIGHT SWITCH - 3WAY 120V COMMERCIAL GRADE PROVIDED BY MC.

DAMMON ENGINEERING, INC.
 LOUISIANA & MISSISSIPPI
 Chief Engineer: Brian Mistich, PE
 554 Old Spanish Trail
 Slidell, LA 70458
 www.dammonengineering.com
 info@dammonengineering.com
 PH: 985.649.5832 F: 985.641.5950

REVISIONS	DATE
# DESCRIPTION	



MAINSTAY SUITES
 100 MAIN STREET
 LOT #7 LA HWY 21
 HACKBERRY, LA 70645
 JOB NO: 2265 DATE: APRIL, 2016
 DRAWN BY: JTL CHECKED BY: BAM

E102
 SHEET NO. 46 OF 52
 DRAWING NUMBER:
 SHEET TITLE:
 POWER PLANS - LEVEL 1, 2, & 3.