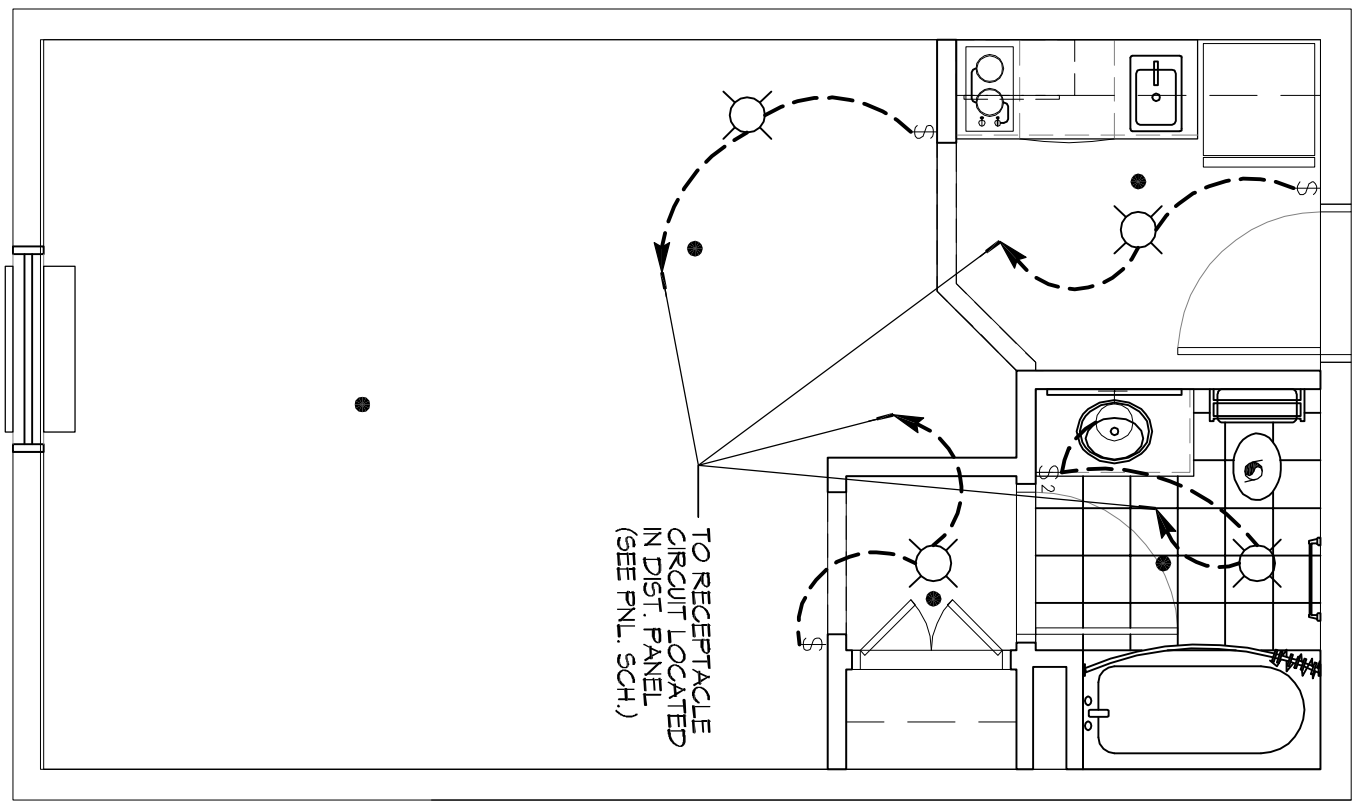
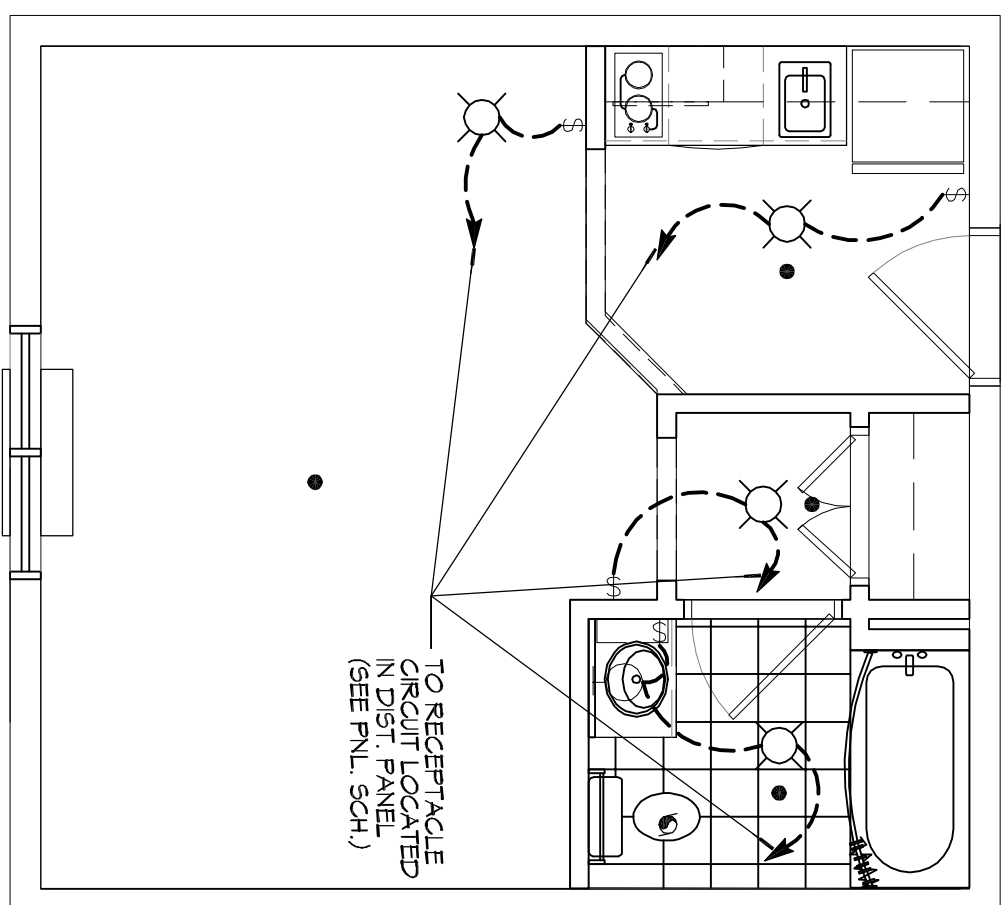


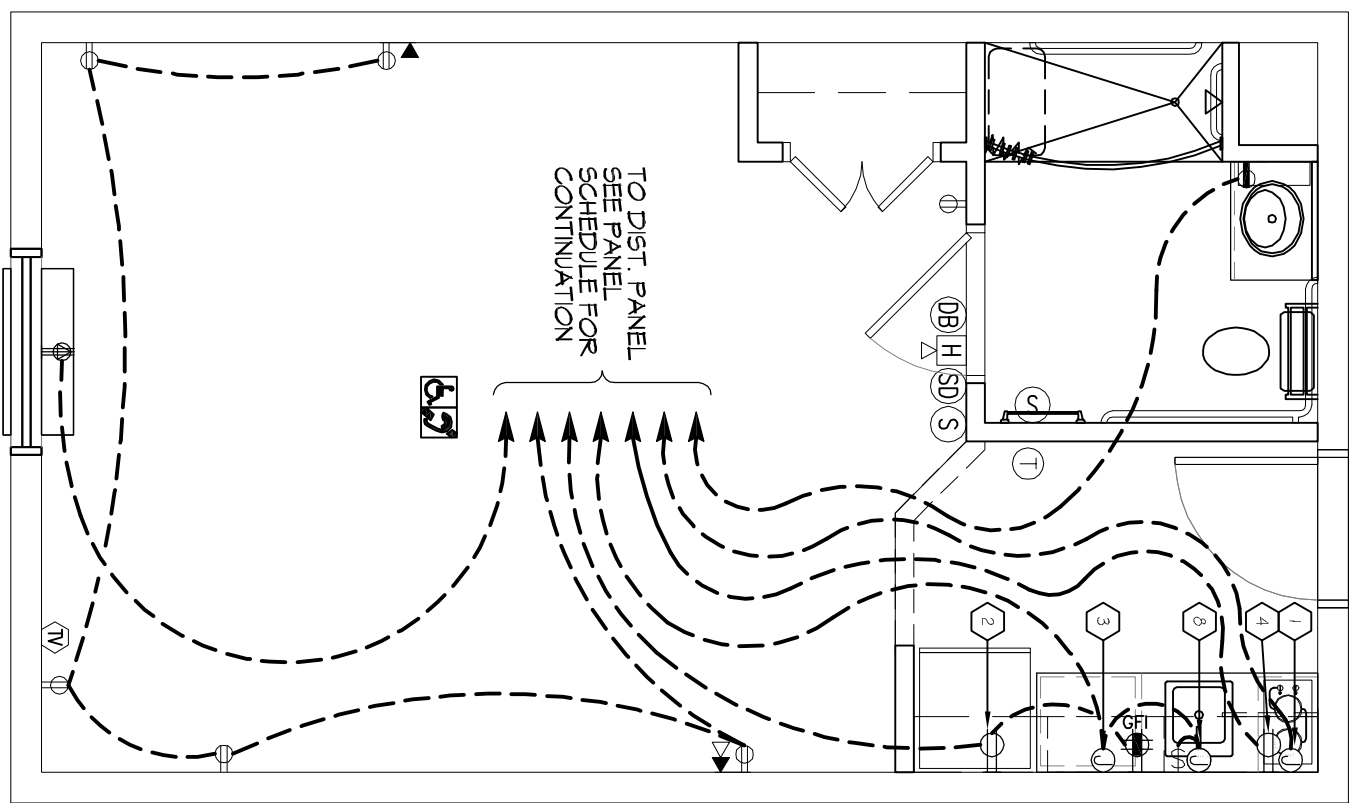
1 ACCESSIBLE DOUBLE QUEEN SUITE (LIGHTING)  
SCALE: 1/4"=1'-0"



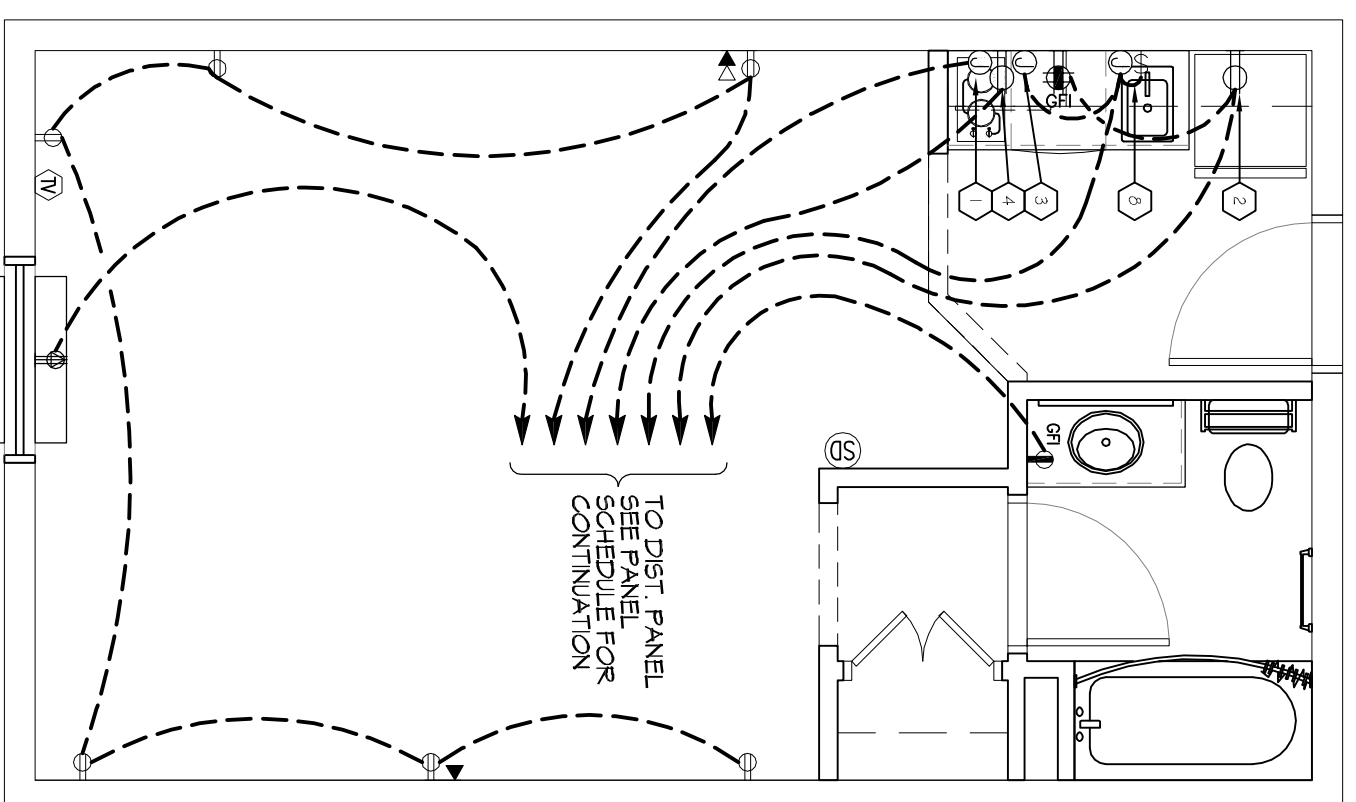
3 DOUBLE QUEEN SUITE (LIGHTING)  
SCALE: 1/4"=1'-0"



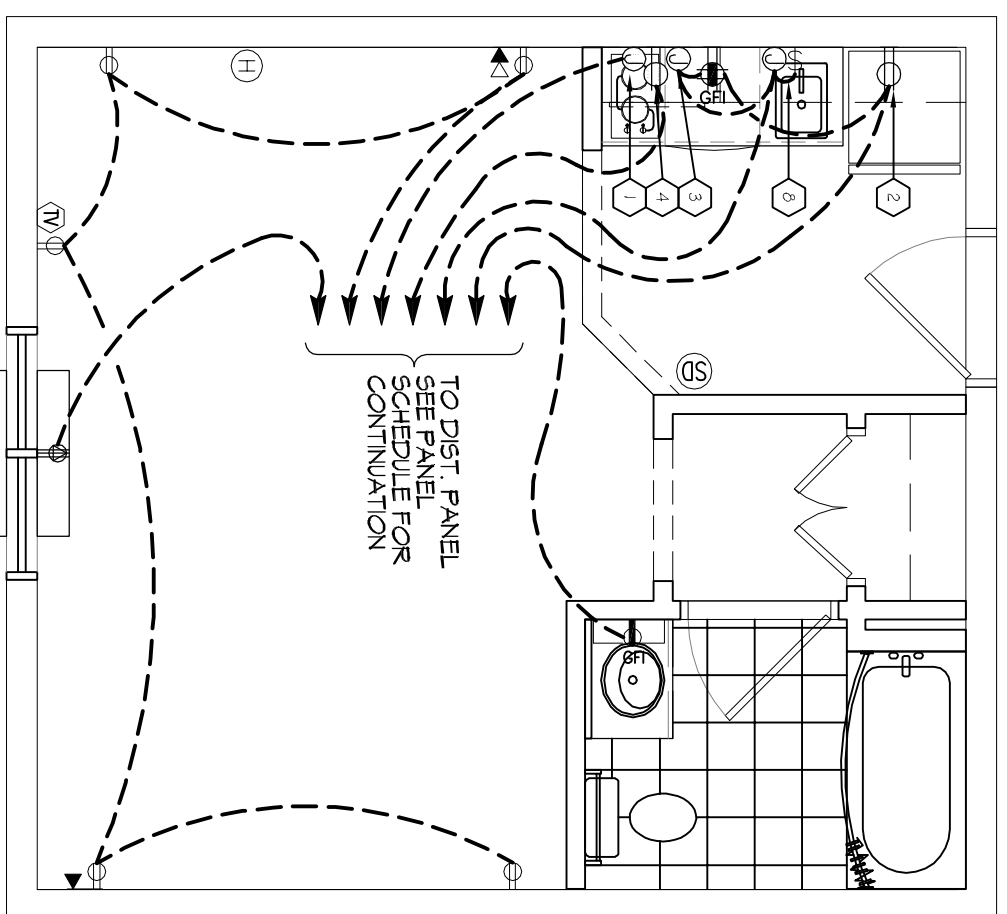
5 KING SUITE (LIGHTING)  
SCALE: 1/4"=1'-0"



2 ACCESSIBLE DOUBLE QUEEN SUITE (POWER)  
SCALE: 1/4"=1'-0"



4 DOUBLE QUEEN SUITE (POWER)  
SCALE: 1/4"=1'-0"



6 KING SUITE (POWER)  
SCALE: 1/4"=1'-0"

**ELECTRICAL LEGEND - POWER**

- SYMB
- ⊕ STANDARD 120V DUPLEX RECEPTACLE, NEMA 5-20, 15' AFF (UNLESS OTHERWISE NOTED)
  - ⊕ SINGLE-POLE DEDICATED RECEPTACLE - REFER TO PANEL SCHEDULE FOR CIRCUIT SIZE
  - ⊕ 6FCI DUPLEX RECEPTACLE
  - ⊕ 6FCI QUAD RECEPTACLE
  - ⊕ 200V DEDICATED RECEPTACLE
  - ⊕ 220V DEDICATED 6FCI RECEPTACLE
  - ⊕ WEATHER-PROOF 6FCI DUPLEX RECEPTACLE MOUNTED AT 30" AFF (UNLESS OTHERWISE NOTED)
  - ⊕ STANDARD 120V DUPLEX RECEPTACLE - FLOOR MOUNTED
  - ⊕ STANDARD QUAD RECEPTACLE - WALL-MOUNTED
  - ⊕ 150V, 15 AMP DUPLEX EXCHG 3 AMP
  - ⊕ HIBELL VES CHARGER RECEPTACLE
  - ⊕ 150V, 15 AMP QUAD EXCHG 3 AMP
  - ⊕ HIBELL VES CHARGER RECEPTACLE
  - ⊕ JUNCTION BOX
  - ⊕ GENERATOR BATTERY CHARGER 60A OUTLET
  - ⊕ 2-BUTTON PUSH BUTTON STATION
  - ⊕ COAX-CABLE CONNECTION FOR TELEVISION
  - ⊕ WALL MOUNTED DATA OUTLET
  - ⊕ FLOOR DATA OUTLET
  - ⊕ POWER DISCONNECT
  - ⊕ GAS WATER HEATER ON DECK OR MEZZANINE ABOVE - SIZE AS NOTED ON PLAN
  - ⊕ AIR CONDITIONING AIR HANDLING UNIT ON DECK OR MEZZANINE ABOVE. SEE MECHANICAL DRAWINGS
  - ⊕ AIR CONDITIONING CONDENSER UNIT ON CONCRETE PAD. SEE MECHANICAL DRAWINGS

- NOTES:**
- CONNECT ALL EMERGENCY/EXIT LIGHT FIXTURES TO NEAREST CONSTANT POWER SOURCE.
  - THESE ARE TO BE TWO OUTLETS ON EACH OUTLET RECEPTACLE THAT OTHER (ONE HIGH & ONE LOW ON WALL).
  - REFER TO INTERIOR ELEVATIONS FOR MOUNTING HEIGHT AND ORIENTATION OF OUTLETS MOUNTED ABOVE COUNTERTOPS.
  - ALL OUTLETS IN SUITES SHALL BE AFCI FAULT.

**ELECTRICAL LEGEND - LIGHTING**

- ⊕ EMERGENCY LIGHT FIXTURE
- ⊕ EXIT LIGHT FIXTURE - WALL MOUNTED
- ⊕ EXIT LIGHT FIXTURE - CEILING MOUNTED
- ⊕ CEILING FAN
- ⊕ CLANG WTD FLOOR STRIP FIXTURE
- ⊕ RECESSED CEILING LIGHT FIXTURE
- ⊕ CLANG HUNG FLOOR STRIP FIXTURE
- ⊕ SURFACE MOUNTED LIGHT FIXTURE
- ⊕ WALL MOUNTED LIGHT FIXTURE
- ⊕ CLANG WTD FLOOR FIXTURE
- ⊕ OUTDOOR LIGHT - ON GROUND
- ⊕ PENDANT LIGHT FIXTURE
- ⊕ EXHAUST FAN - SEE MECH
- ⊕ EMERGENCY LIGHT FIXTURE
- ⊕ EXIT LIGHT FIXTURE - WALL MOUNTED
- ⊕ EXIT LIGHT FIXTURE - CEILING MOUNTED
- ⊕ CEILING FAN
- ⊕ CLANG WTD FLOOR STRIP
- ⊕ RECESSED CEILING LIGHT FIXTURE
- ⊕ CLANG HUNG FLOOR STRIP
- ⊕ SURFACE MOUNTED LIGHT FIXTURE
- ⊕ WALL MOUNTED LIGHT FIXTURE
- ⊕ CLANG WTD FLOOR FIXTURE
- ⊕ OUTDOOR LIGHT - ON GROUND
- ⊕ PENDANT LIGHT FIXTURE
- ⊕ EXHAUST FAN - SEE MECH

**KEY NOTES**

- JUNCTION BOX FOR RANGE TOP
- DUPLEX RECEPTACLE FOR REFRIGERATOR, MOUNTED 30" ABOVE FLOOR
- JUNCTION BOX FOR DRYWALLER, MOUNTED BELOW COUNTER
- DUPLEX RECEPTACLE FOR MICROWAVE, MOUNTED IN CABINET ABOVE MICROWAVE
- SWITCH AND JUNCTION BOX FOR GARAGE DISPOSAL, SWITCH TO BE MOUNTED ABOVE COUNTER AND JUNCTION BOX TO BE MOUNTED BELOW SINK.

**DAMMON ENGINEERING, INC.**  
LOUISIANA & MISSISSIPPI

Chief Engineer: Brian Mistich, PE  
554 Old Spanish Trail  
Slidell, LA 70458  
www.dammonengineering.com  
info@dammonengineering.com  
PH: 985.649.5832 F: 985.641.5950

REVISIONS	
#	DESCRIPTION

STATE OF LOUISIANA  
BOARD OF ELECTRICAL ENGINEERS  
08-27-16

**MAINSTAY SUITES**

100 MAIN STREET  
LOT #1 LA HWY 21  
HACKBERRY, LA 70645

JOB No: 2265 DATE: APRIL, 2016  
DRAWN BY: JTL CHECKED BY: BAM

POWER & LIGHTING SUITES

DRAWING NUMBER: **E103**

SHEET NO. 47 of 52