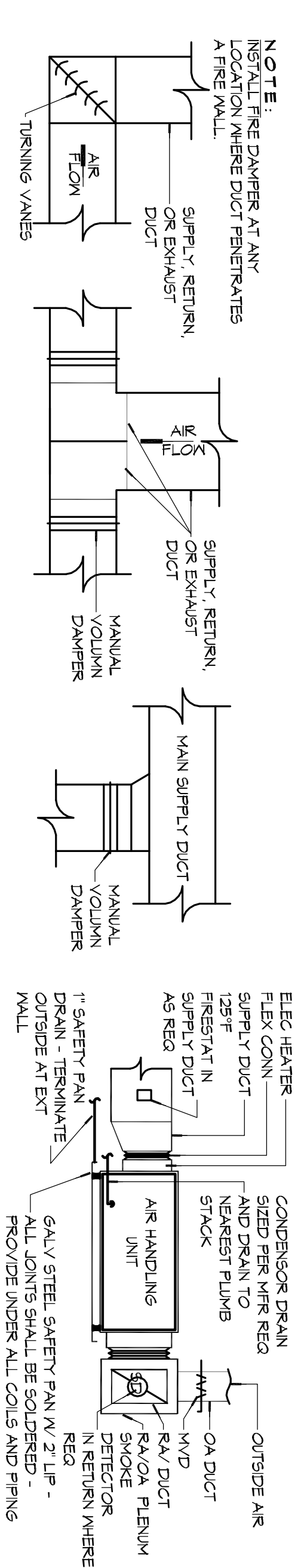
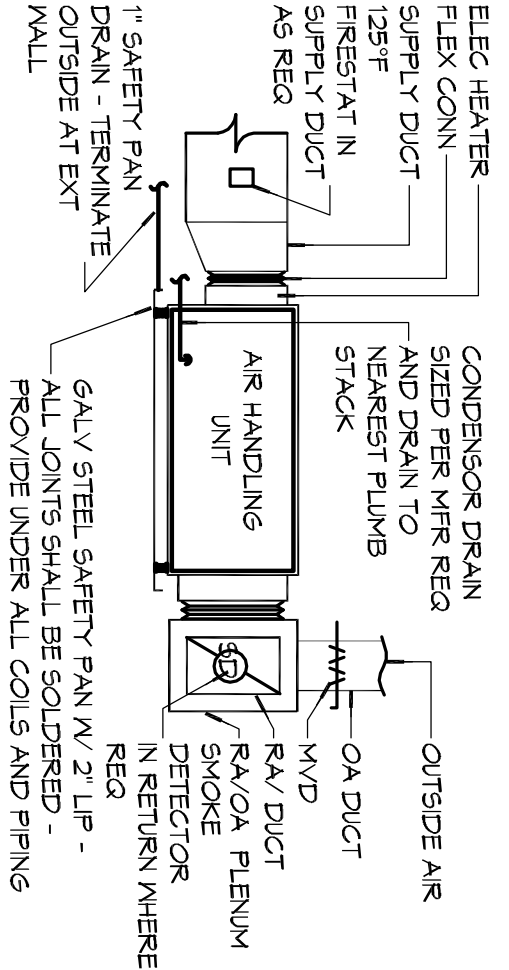


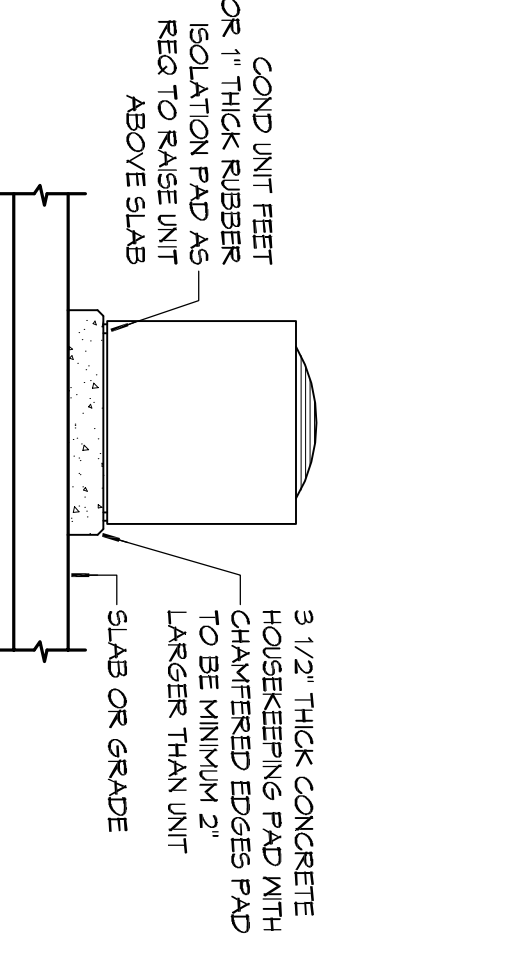
2 TYPICAL CEILING DIFFUSER & DUCTWORK
SCALE: NTS



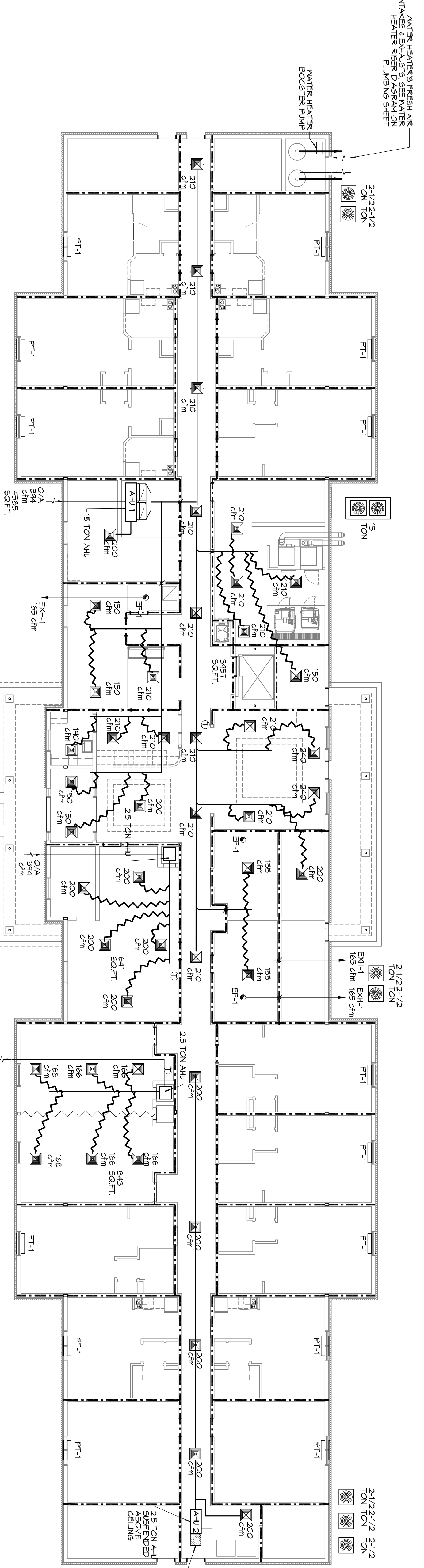
3 TYPICAL HARD DUCT DETAILS
SCALE: NTS



4 TYPICAL AHU DETAIL
SCALE: NTS



5 TYPICAL A/C CONDENSER DETAIL
SCALE: NTS



1 MECHANICAL PLAN - LEVEL 1
SCALE: 3/32\"/>

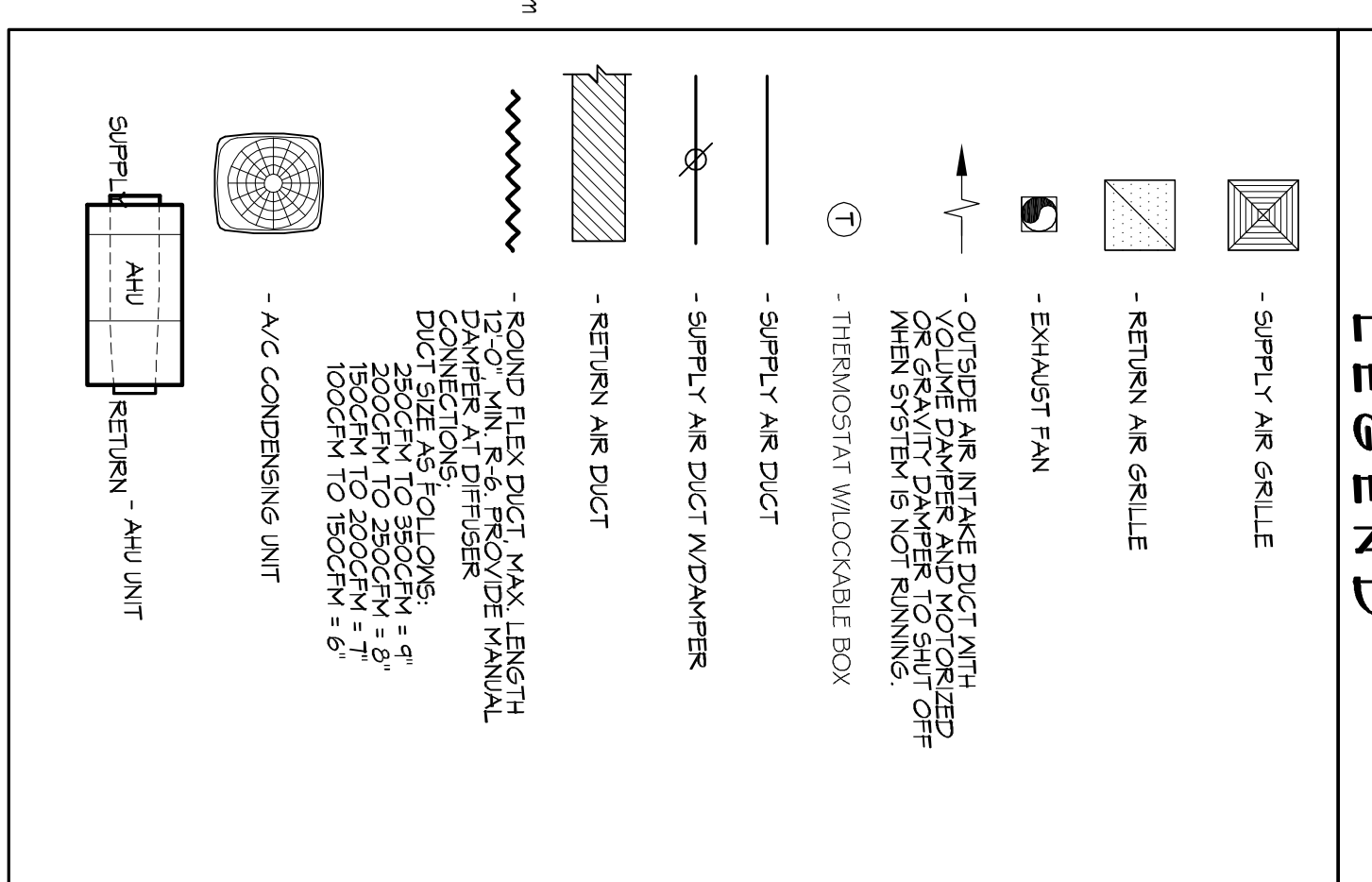
A/C UNIT SCHEDULE				
TOTAL BU	VOLT	MCA	MAX O.C.P.	MFR
180,000 BU 15 TON AC	208V, 3Ø	66.3	80	TRANE OR EQUAL
36,000 BU 2 1/2 TON AC	208V, 3Ø	10.0	15	

AHU UNIT SCHEDULE							
TOTAL BU	CFM	OA (KW)	HEAT (KW)	VOLT	MCA	MAX O.C.P.	MFR
180,000 BU 15 TON	6000	394	225	208V, 3Ø	81.0	90	TRANE OR EQUAL
36,000 BU 2 1/2 TON	1000	43	10	208V, 1Ø	48.1	60	

PTAC SCHEDULE								
UNIT	TOTAL BTU	CFM	OA (KW)	HEAT (KW)	VOLT	MCA	MAX O.C.P.	MFR
PT-1	4,000	360	36	9.5	208V, 3Ø	14.5	20	AMANA

EXHAUST FAN SCHEDULE				
FAN NO.	CFM	VOLTAGE	VENT TYPE	MFR/LOCATION
EXH-1	165	120	VENT	BROAN-L150NS

- GENERAL HVAC NOTES**
- OWNER HAS THE OPTION FOR AMANA DIGITAL SYSTEM FOR PTAC UNITS. OPTION IS AVAILABLE TO HAVE WIRING REWIRE THERMOSTATS FOR PTAC UNITS.
 - CONCEALED DUCTWORK TO BE GALVANIZED SHEET METAL LINED WITH FIBROX GLASS DUCT LINER. MIN. R-6. INSTALLED PER SWACMA STANDARDS.
 - EXPOSED DUCTWORK TO BE GALVANIZED SHEET METAL LINED WITH FIBROX GLASS DUCT LINER. MIN. R-6. INSTALLED PER SWACMA STANDARDS.
 - ROUND FLEXIBLE DUCT TO BE UL-181, CLASS 1, AIR DUCT MATERIALS.
 - DUCT SIZES SHOWN ARE CLEAR INSIDE DIMENSIONS.
 - ALL SYSTEMS OVER 2000 CFM AND LESS THAN 15,000 CFM SMOKE DETECTOR SHALL BE INSTALLED IN ACCORDANCE WITH NFPA 72 IN THE RETURN DUCT DOWNSTREAM OF THE AIR HANDLING UNIT AND ALL FILTERS TO AUTOMATICALLY STOP THE FAN.
 - PROVIDE UL LISTED 125 F. FRESH AIR RETURN AIR OF EACH SYSTEM UNDER 2000 CFM TO SHUT DOWN THE FAN IN THE EVENT OF FIRE.
 - INSTALLATION OF FIRE-RATED DAMPERS WHERE REQUIRED AT ALL DUCT PENETRATIONS OF FIRE-RATED ASSEMBLIES AND WHERE REQUIRED BY CODE, INCLUDING OUTSIDE AIR INTAKES AND EXHAUST FANS.
 - FIVE FEET OF AIR HANDLING UNITS.
 - CONDENSATE DRAINAGE TO BE P.V.C PIPE RUN TO PLUMBERS P-TRAY WITHIN FIVE FEET OF AIR HANDLING UNITS.
 - ALL AIR HANDLING SYSTEMS TO BE BALANCED TO ASSURE PROPER AIR FLOWS PER PLANS.
 - ALL THERMOSTATS TO BE AUTOMATIC CHANGE-OVER WITH HEAT SWITCH.
 - EXHAUST FAN SHALL BE CONTROLLED BY A SWITCH ON THE WALL IN THE SAME LOCATION AS LIGHT SWITCHES. PROVIDE BACK DRAFT DAMPERS FOR EXHAUST FANS.
 - PROVIDE AND INSTALL WATER RECEPTOR GRILLE VENT IN PROPER ROOF LOCATION FOR PLUMBING THROUGH EXHAUST.
 - ALL SUPPLY AIR VENTS SHALL BE EQUIPPED WITH AIR CONTROL DAMPERS AT THE RESEPTER.
 - LOCATE OUTDOOR UNITS AS SHOWN ON ARCHITECTURAL DRAWINGS.
 - REFRIGERANT LINES SHALL BE SIZED BY UNIT MANUFACTURERS AND INSTALLED ACCORDING TO MANUFACTURERS' INSTRUCTIONS.
 - FRESH AIR SHALL BE SUPPLIED TO EACH AIR HANDLER THROUGH EXTERIOR WALL DUCT SUPPLIED WITH A CONTROL DAMPER.
 - ALL ELECTRICAL, MECHANICAL, AND PLUMBING PENETRATING FIRE WALLS SHALL BE FIRE CALKED. (PENETRATIONS THROUGH RATED CONSTRUCTION SHALL BE SEALED WITH A MATERIAL CAPABLE OF PREVENTING THE PASSAGE OF FLAMES AND HOT GASES WHEN TESTED IN ACCORDANCE WITH ASTM E-814).
 - ALL MECHANICAL SYMBOLS ARE DRAWN DIAGRAMMATICALLY.
 - ALL OUTDOOR TO VENT WITH OWNER LOCATIONS OF VENTS, DAMPERS, RESEPTERS, ETC.
 - REFER TO REFLECTED CEILING PLAN FOR FINAL GRILLE AND DIFFUSER LOCATIONS AND COORDINATE AS REQUIRED.
 - FINAL LOCATION OF TEMPERATURE CONTROLS TO BE COORDINATED WITH OWNER AT JOB SITE.
 - PROVIDE AND INSTALL SMOKE DETECTORS AS APPROVED BY LOCAL A.H.J.S. PLACE NEAR R/A AND S/A OPENINGS OF AHU AND PROVIDE WITH ACCESS PANEL, MARKING BY ELECTRICAL CONTRACTOR.
 - FRESH AIR INTAKES ARE REQUIRED TO HAVE MOTORIZED OR GRAVITY DAMPERS TO SHUT OFF WHEN SYSTEM IS NOT RUNNING.
 - PROVIDE BRD SCREENS AT ALL EXTERIOR MECHANICAL PENETRATIONS.
 - COORDINATE WALL MOUNTED THERMOSTAT LOCATIONS WITH ALL OWNER FURNISHED ITEMS EITHER WALL MOUNTED OR FLOOR MOUNTED AGAINST PARTITIONS. REFER TO ARCHITECTURAL DRAWINGS.
 - SEE ROOF PLAN FOR ALL ROOF PENETRATIONS.
 - PROVIDE MIN. 18 GA GALVANIZED SHEET METAL TO BLANK-OFF GABLE VENTS WHERE INTAKE/EXHAUST DUCTS OCCUR.



MAIN STAY SUITES

100 MAIN STREET
LOT #1 LA HWY 27
HACKBERRY, LA 70645

JOB No: 2265 DATE: APRIL, 2016
DRAWN BY: CKD CHECKED BY: BAM

SHEET TITLE: MECHANICAL PLAN - LEVEL 1
DRAWING NUMBER: M101

REVISIONS

#	DESCRIPTION	DATE

DAMMON ENGINEERING, INC.
LOUISIANA & MISSISSIPPI

Chief Engineer: Brian Mistich, PE
554 Old Spanish Trail
Slidell, LA 70458

www.dammonengineering.com
info@dammonengineering.com
PH: 985.649.5832 F: 985.641.5950