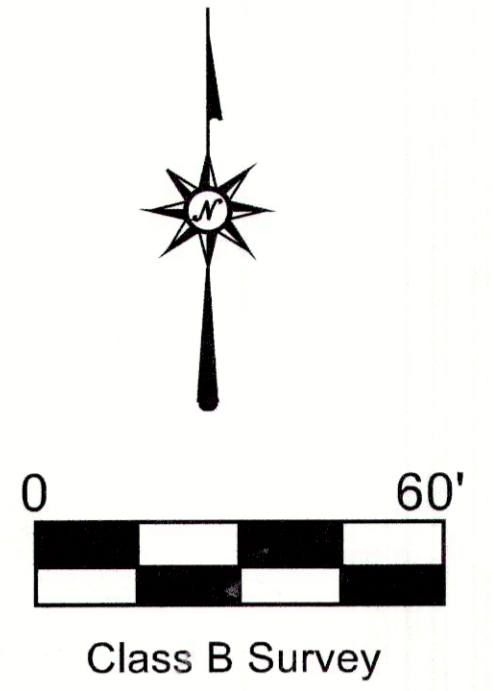
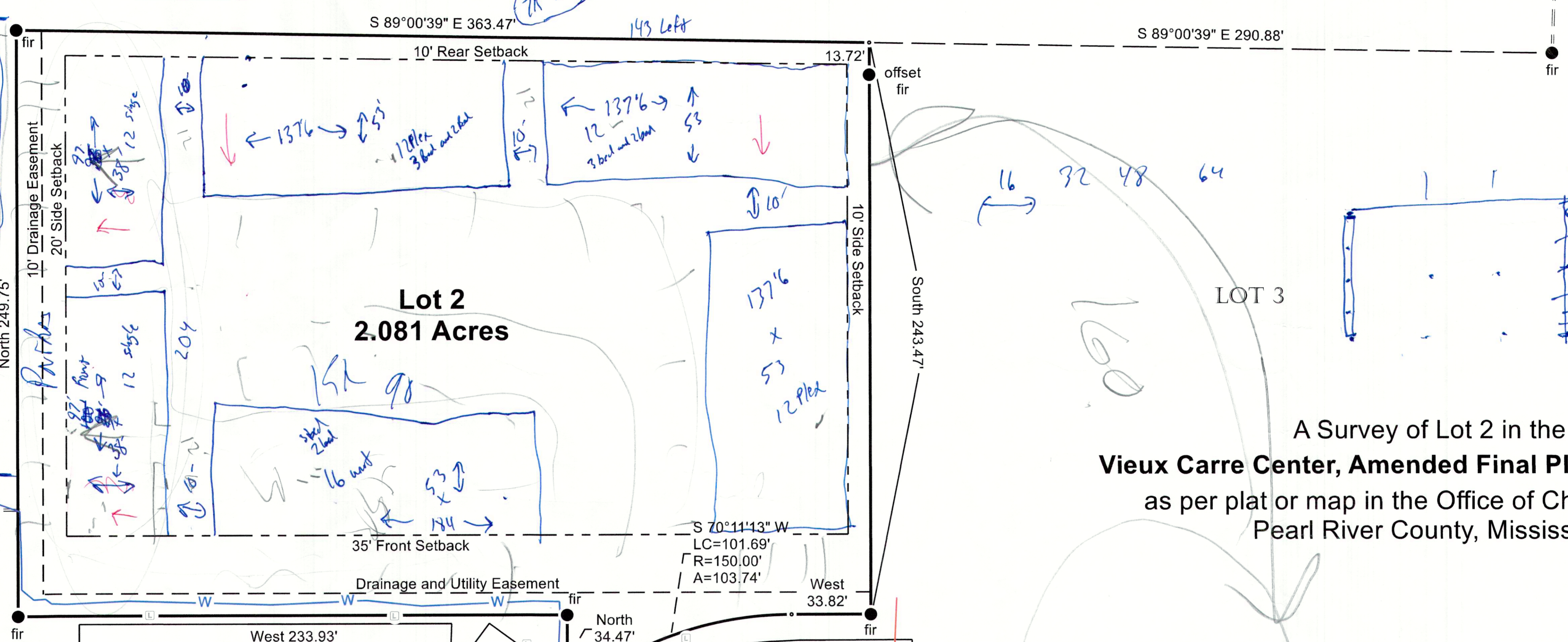


Amacker Land Surveying, LLC
 14321 Viola Way, Diberville, MS 39540
 grayson.amacker@gmail.com
 601-795-5645



Joseph Avenue
Apparent 50' ROW

Phillips Street
Apparent 50' ROW



A Survey of Lot 2 in the
Vieux Carre Center, Amended Final Plat, Subdivison,
 as per plat or map in the Office of Chancery Clerk,
 Pearl River County, Mississippi.



LEGEND

- Found 1/2" Rebar
- ⊙ Set Steel Spike
- ⊠ Street Light
- ⊞ Manhole
- ⊕ Fire Hydrant
- P- Underground Power Lines
- W- Underground Water Lines
- S- Underground Sewer Lines

Note:

All bearings shown on this plat are referenced to the Vieux Carre Center, Amended Final Plat, Subdivison, as per plat or map in the Office of Chancery Clerk, Pearl River County, Mississippi.

Underground utilities shown hereon were marked in the field by operators participating in the Mississippi 811 system under ticket #26050710440670 dated 05/07/2026. Utility locations are shown in their approximate positions based on those field markings. This survey does not guarantee that all underground utilities are shown, nor the exactness of the locations. Utility depths are unknown. Prior to any excavation, contractor must contact MS811 for utility verification."

A Survey for Trenton Bond

SCALE 60 Ft/In	DATE 05/20/2026	DRAWN BY GA
JOB 26-020	Reference: DB 2024 p. 7066	

This map drawn with TRAVERSE PC, Software