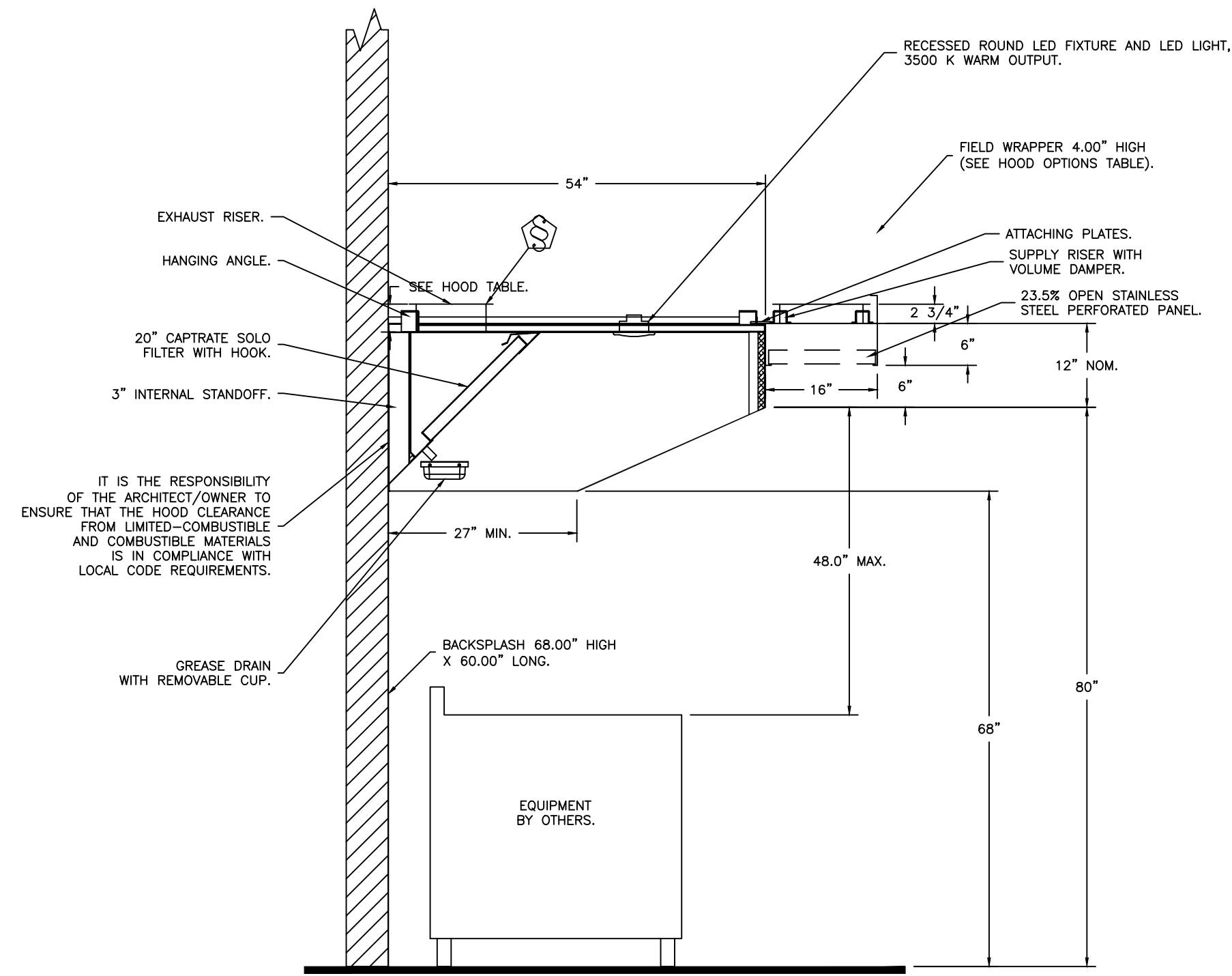
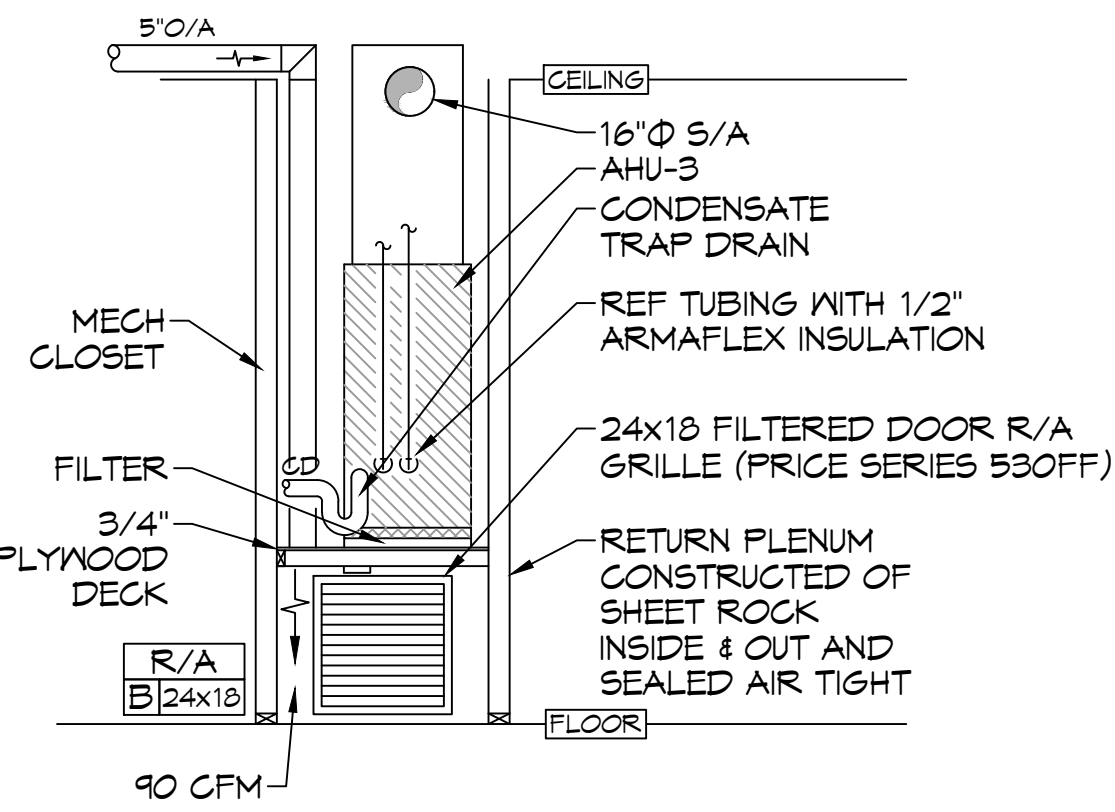


DRAWN DIAGMATICALLY FOR
CLARITY. FIELD VERIFY
PLACEMENT OF ALL EQUIPMENT



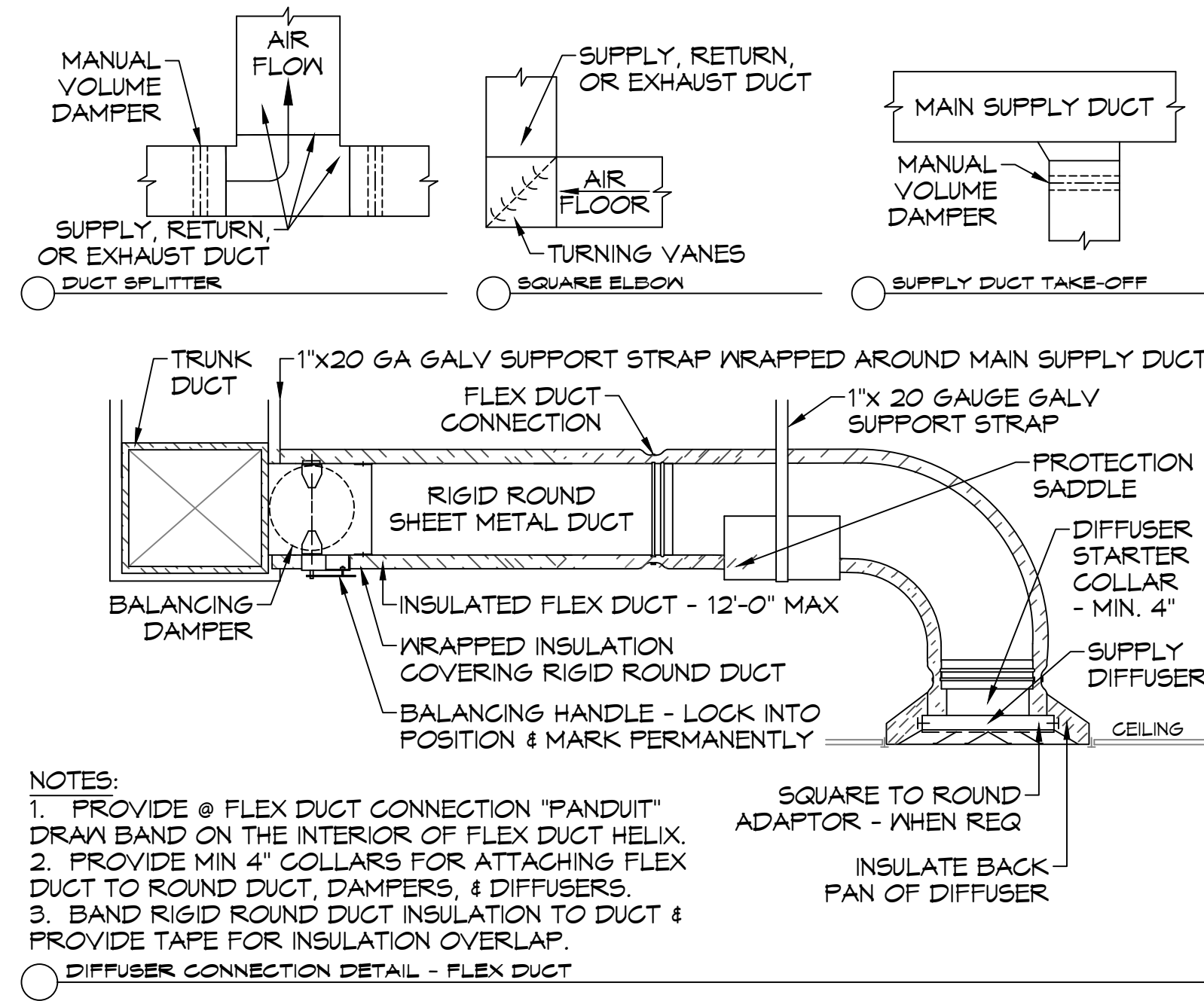
SECTION VIEW - MODEL 5412ESX-2-PSP-F
HOOD - #1 (KH-1)

HOOD DETAIL



CLOSET DETAIL

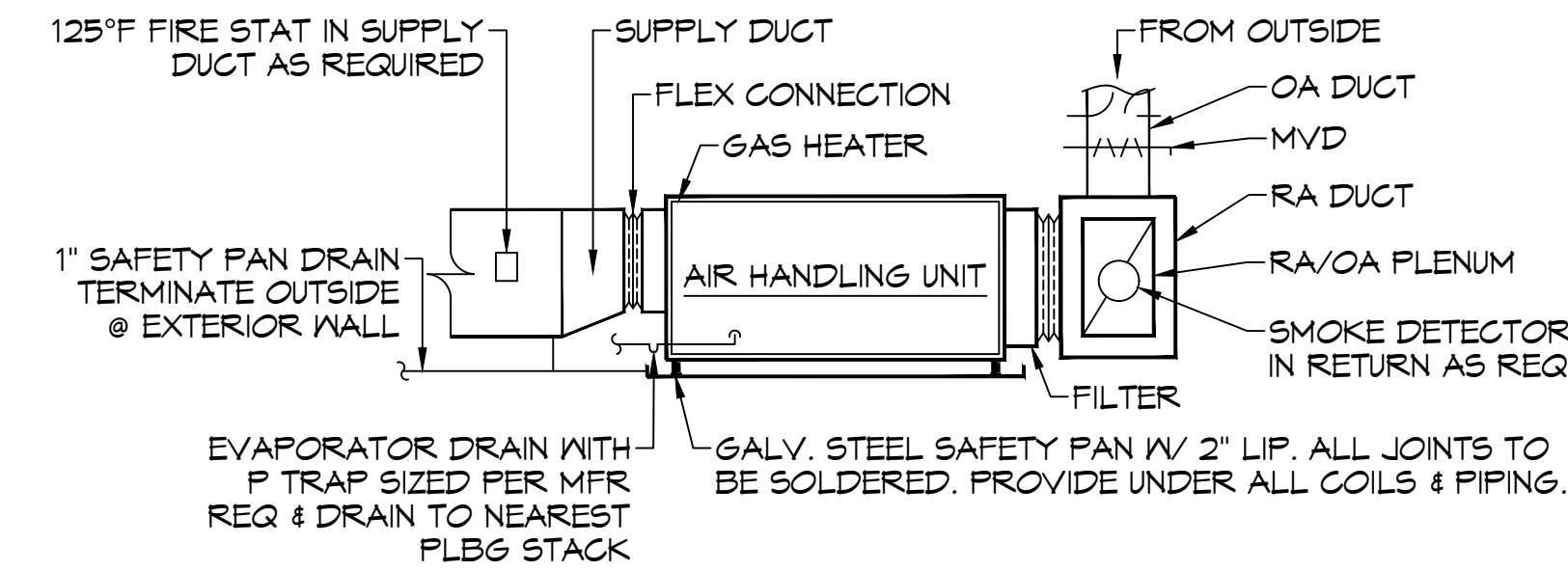
23 TYPICAL DETAILS
SCALE: N.T.S.



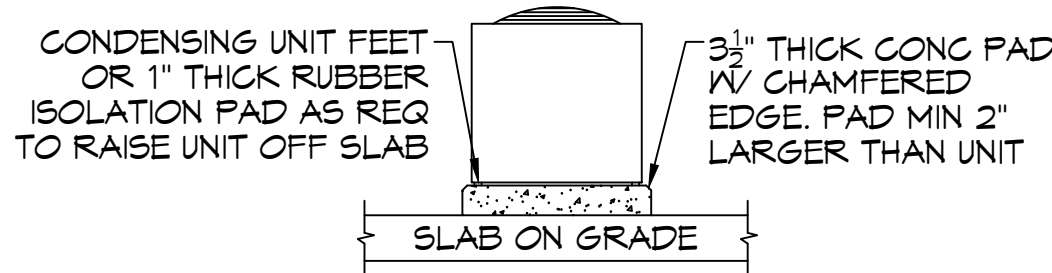
NOTES:

1. PROVIDE @ FLEX DUCT CONNECTION "PANDUIT" DRAIN BAND ON THE INTERIOR OF FLEX DUCT HELIX.
2. PROVIDE MIN 4" COLLARS FOR ATTACHING FLEX DUCT TO ROUND DUCT, DAMPERS, & DIFFUSERS.
3. BAND RIGID ROUND DUCT INSULATION TO DUCT & PROVIDE TAPE FOR INSULATION OVERLAP.

DIFFUSER CONNECTION DETAIL - FLEX DUCT



TYPICAL HORIZONTAL AHU DETAIL



CONDENSING UNIT MOUNT

DIFFUSER SCHEDULE			
Mark No.	Service	Neck Size	Description
A	Supply Air	Ref. Plan	Price 620D Register, Double Deflection w/ Damper
B	Supply Air	Ref. Plan	Four Slot Linear Slot Diffuser (48" x 1"), Price SDS w/ SDA Plenum
C	Supply Air	Ref. Plan	12" x 12" Adjustable Square Cone Diffuser, Price ASCDA w/ Insulated Back Panel
D	Supply Air	Ref. Plan	24" x 24" Adjustable Square Cone Diffuser, Price ASCDA w/ Insulated Back Panel
E	Return Air	Ref. Plan	12" X 12" Perforated, Ducted Return w/ Damper, Titus PAR
F	Return Air	Ref. Plan	24" X 24" Perforated, Ducted Return w/ Damper, Titus PAR
G	Return Air	Ref. Plan	Price 80 Eggcrate Return w/ Damper

1. Coordinate with Architect / Owner for colors and finish.

EXHAUST FAN SCHEDULE									
TAG	FAN			POWER		MAKE / MODEL	REMARKS		
	AIRFLOW (CFM)	TSP ("wc)	AMPS	WATTS	VAC			PH	
EF-1	150	0.1		42.8	120	1	60	Broan QTXE Series 150	1, 2
EF-2	70	0.2	0.4		120	1	60	Broan A80	1, 2
EF-3	415	0.6		72	120	1	60	Fanleck DBF-4XLT	1, 3

1. Install per manufacturer's recommendations
2. Interlock with light switch
3. Furnish with pressure differential switch

SPLIT SYSTEM SCHEDULE																										
Tag	Area Served	Tons (Nominal)	Total CFM	ESP	O/A (CFM)	Position	Make	AIR HANDLER					CONDENSER													
								Model			Cooling		Electric Heat	Gas Heat	Motor HP	Power	Tag	Make	Model	Power						
								Evaporator	DX Coil	Furnace	TMBH	EDB	EWB	kW	MBH (Inlet)	VAC				PH	VAC	PH	MCA	Remarks		
AHU-1	Worship	20	7680	0.4	1280	Horizontal	Trane	TWE240E3				218	79.6	68.6	37.4		3	208	3	CU-1	Trane	TIA240E3	208	3	98	1, 2, 3, 4, 5
AHU-2	Second Floor	2	1020	0.5	70	Upflow	Goodman	CHPT1824	GMV90453			19.8	77.8	66.3		45	1/3	208	1	CU-2	Goodman	GSX140241	208	1	10.3	2, 3, 4, 5, 6
AHU-3	First Floor	2-1/2	1080	0.5	90	Upflow	Goodman	CAPT3030	GMV90453			26.6	78.6	66.6		45	1/3	208	1	CU-3	Goodman	GSX140301	208	1	16.7	2, 3, 4, 5, 6
AHU-4	Vestibule	3	1110	0.5	300	Horizontal	Goodman	CHPT3137	GMV90453			34.4	80.5	71.7		45	1/3	208	1	CU-4	Goodman	GSX140361	208	1	18.8	2, 3, 4, 5, 6
AHU-5	Multi-purpose Room	5	1480	0.5	190	Upflow	Goodman	CAPT4860	GMV90453			51.3	81.3	68.7		45	1/3	208	1	CU-5	Goodman	GSX140601	208	1	32.5	2, 3, 4, 5, 6

NOTES:

1. Single circuit air cooled condenser with scroll compressor, hot gas bypass, refrigerant and single point power connection. All control devices shall be provided to accommodate stand-alone integration with a programmable 24VAC thermostat.
2. Provide inlet filter box, single point power connection, expansion valve, time delay relay, condensate overflow switch & programmable 7/24 thermostat with lockable cover.
3. Cooling capacities to be rated in accordance with AHRI standard 210/290 for ASHRAE standard design weather conditions in New Orleans, LA.
4. Install units in accordance with manufacturer's recommendations.
5. Provide Goodman high temperature drain pan kit for DX coils.
6. Provide new filters after commissioning and final acceptance.

24 SCHEDULES
SCALE: N.T.S.

**THE SIXTH BAPTIST CHURCH
RENOVATION AND ADDITION**
928 FELICITY STREET
NEW ORLEANS, LOUISIANA 70130

ISSUE	
DATE	FOR
--/--2023	CONSTRUCTION DOC-100%

PROJECT NO: 22201
DATE:
BY:
CHECKED:

PROGRESS PRINT
NOT FOR CONSTRUCTION

FULL RELEASE

THIS DRAWING IS FULLY RELEASED BY THE ARCHITECT FOR CONSTRUCTION OF THIS PROJECT ONLY

NOT TO BE COPIED OR REPRODUCED WITHOUT EXPRESSED WRITTEN CONSENT OF HEWITT-WASHINGTON & ASSOCIATES

**DAMMON
ENGINEERING, INC.**
LOUISIANA & MISSISSIPPI

Chief Engineer: Brian Heston, PE
594 Oak Square Trail
Sibley, LA 70468
www.dammonengineering.com
info@dammonengineering.com
PH: 985.449.5312

SHEET TITLE
MECHANICAL PLAN
DETAIL AND SCHEDULES

SHEET NO.

M103

SHEET OF