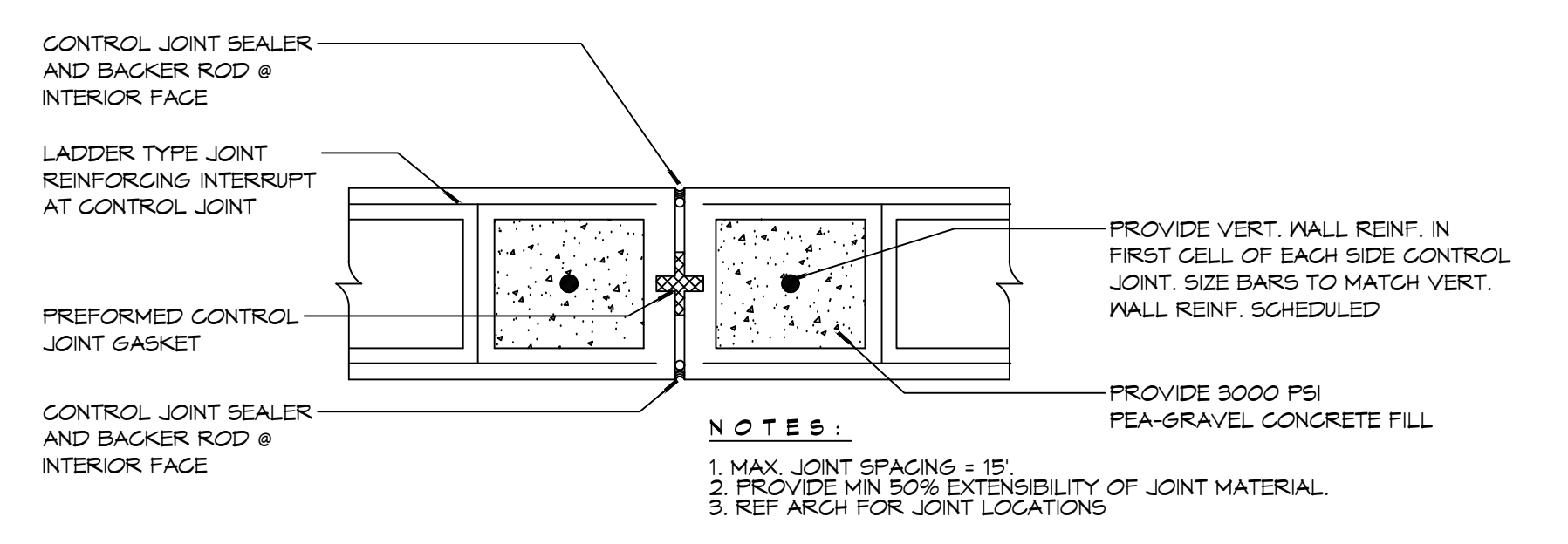
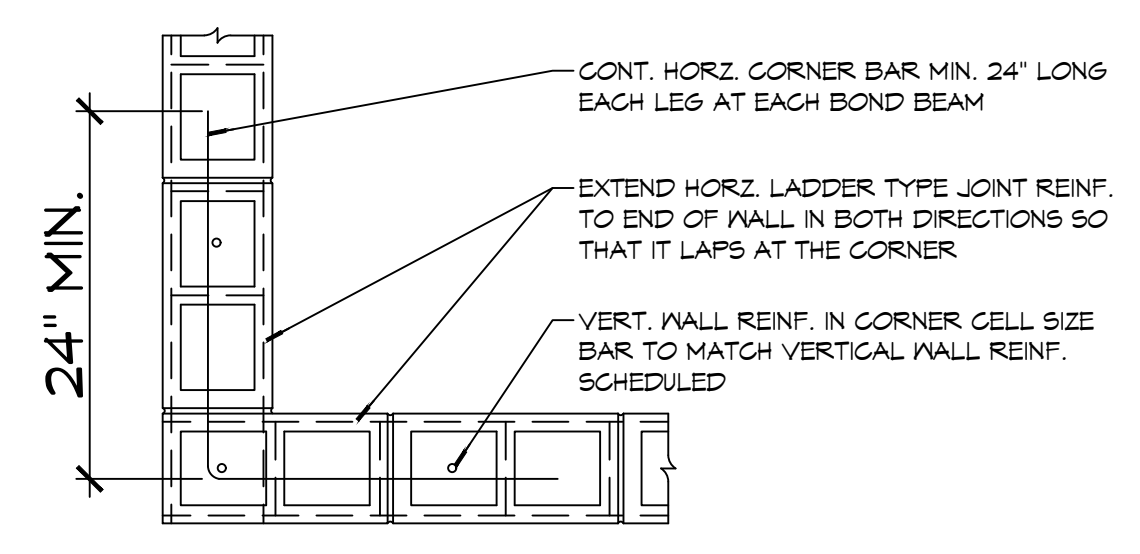


**A FOUNDATION SECTION**  
Perimeter Grade Beam  
SCALE: 1/8" = 1'-0"

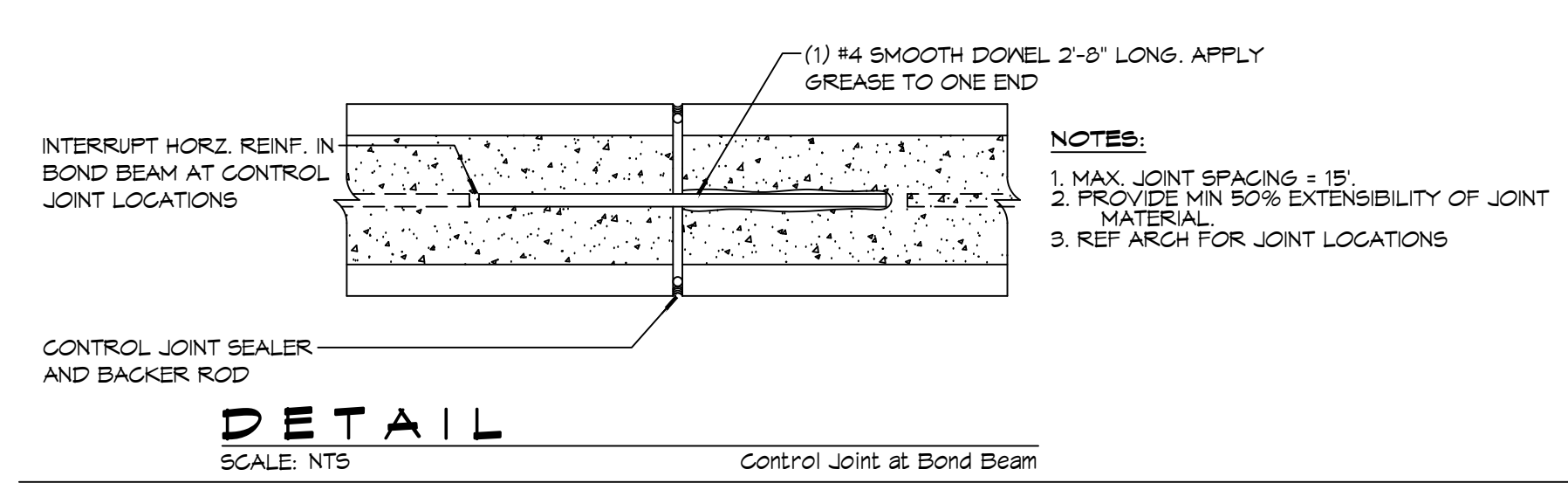
**B FOUNDATION SECTION**  
Interior Grade Beam  
SCALE: 1/8" = 1'-0"



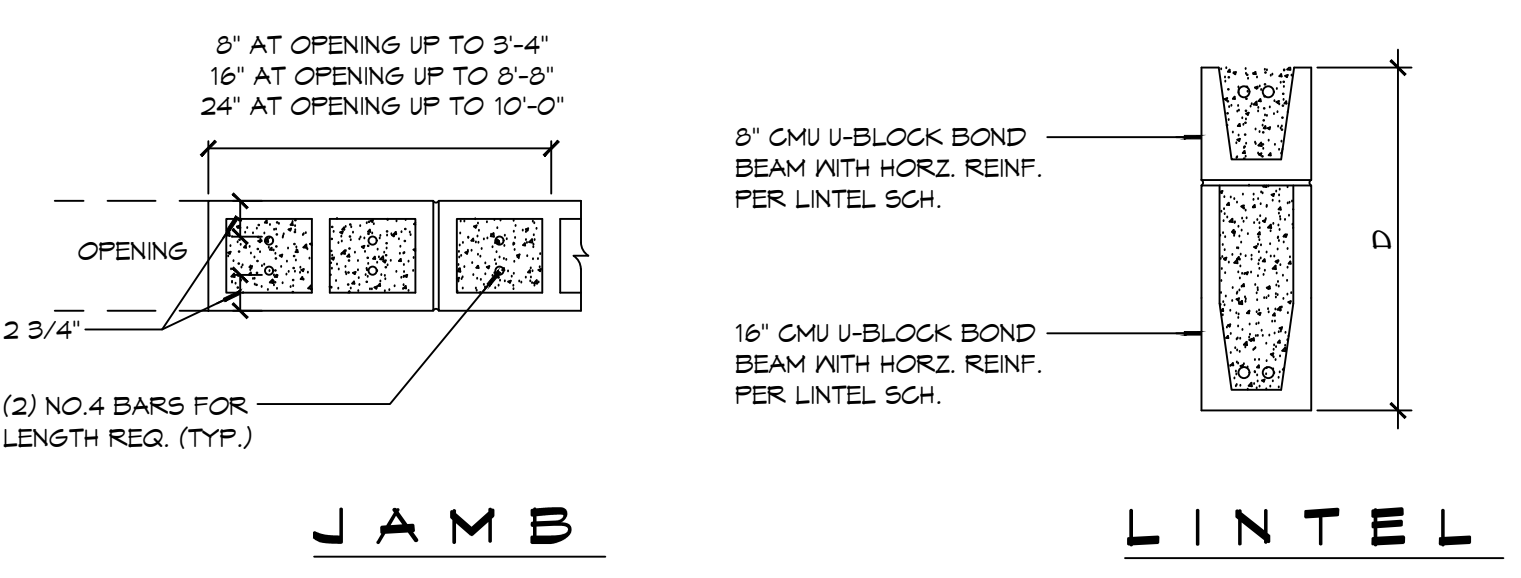
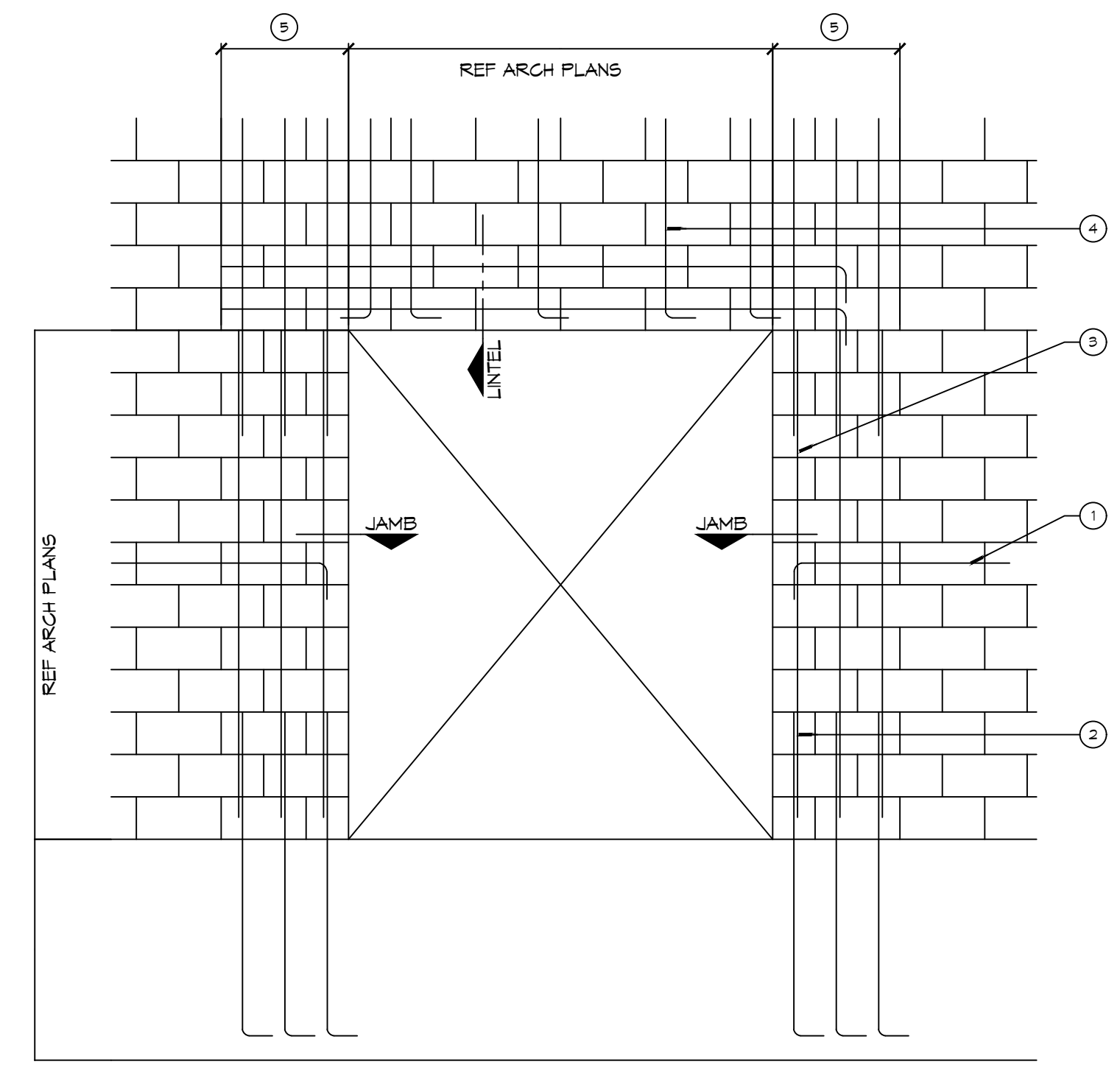
**DETAIL**  
Typical Expansion Joint  
SCALE: NTS



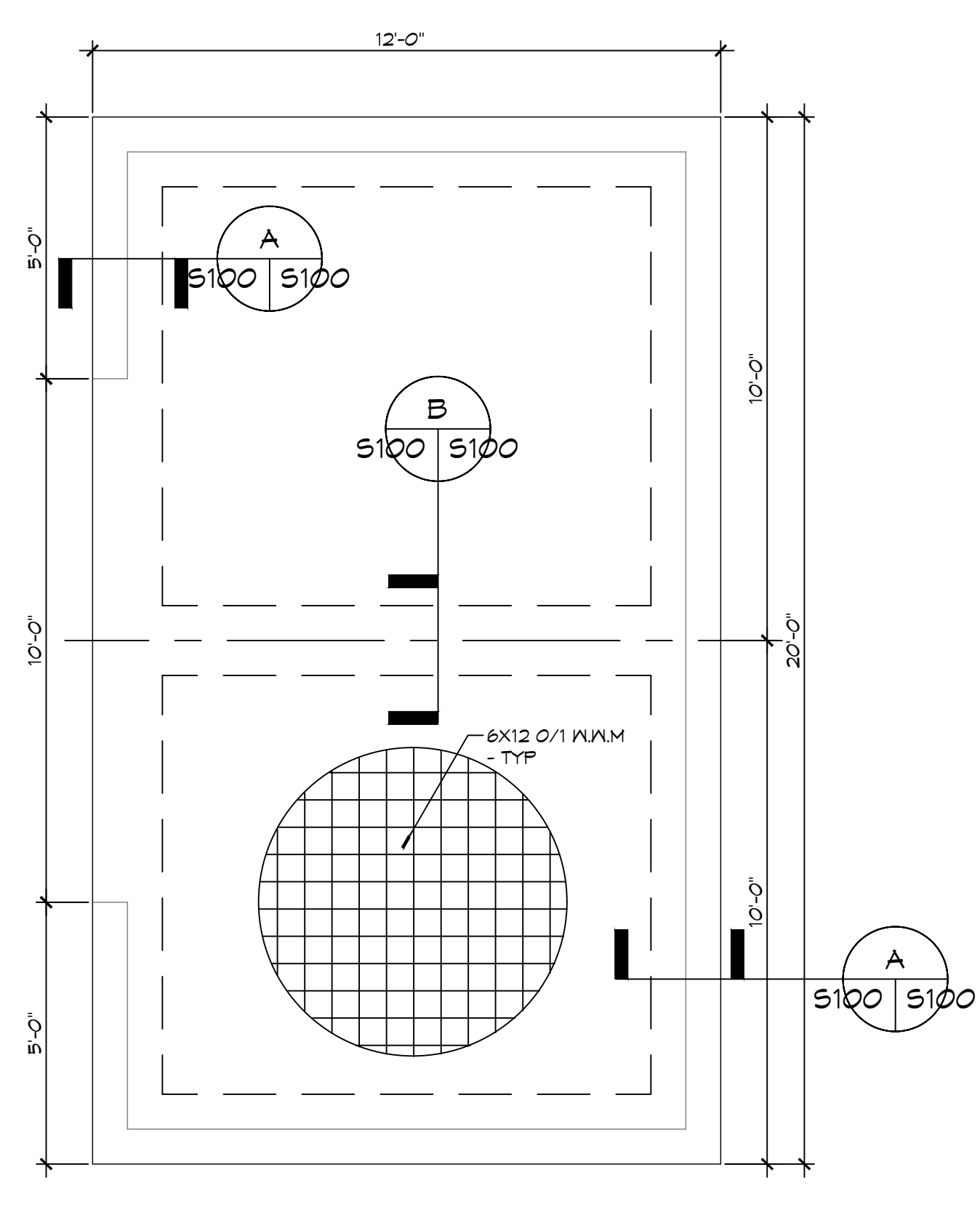
**DETAIL**  
Typical Reinforcing at Corner  
SCALE: NTS



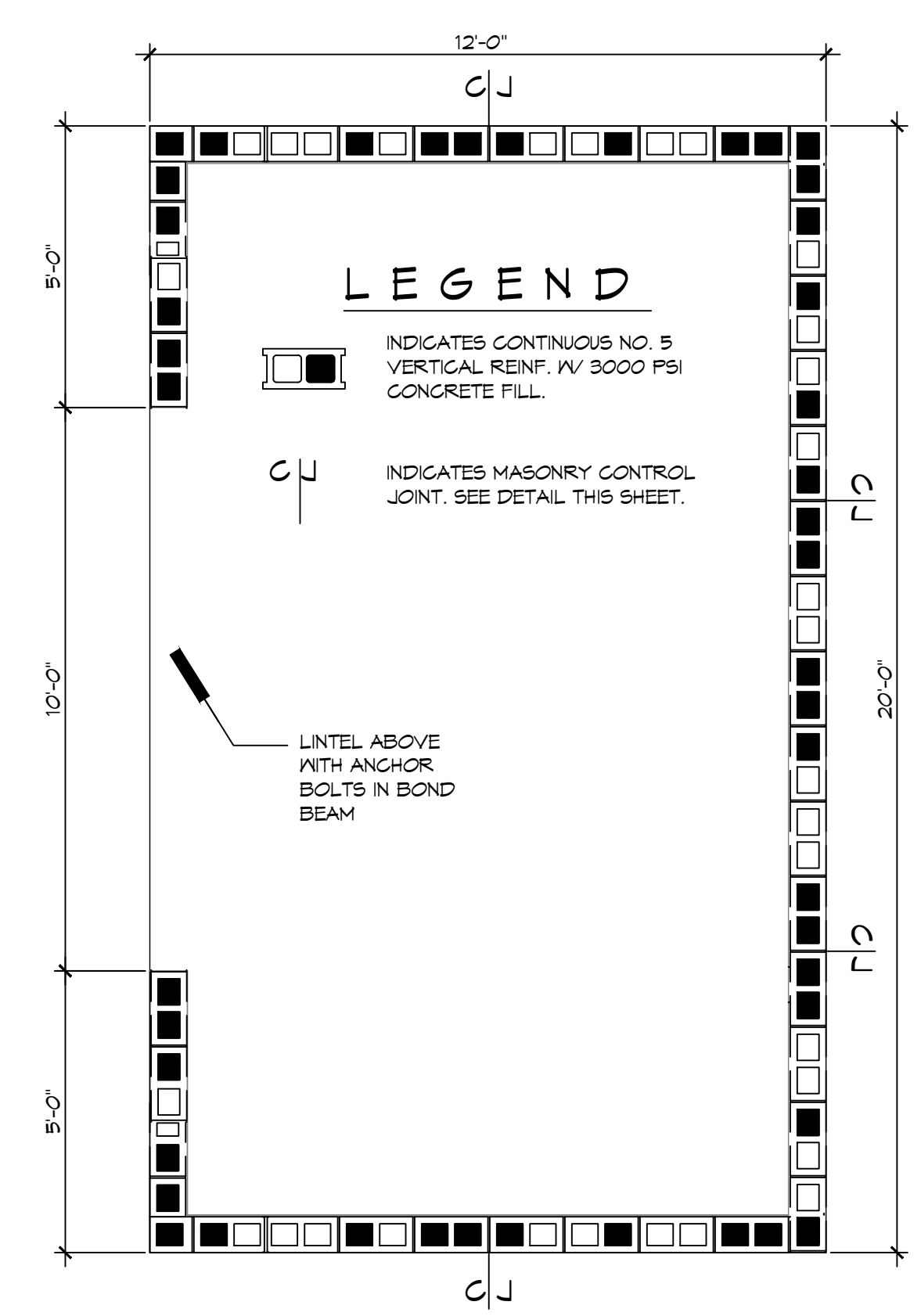
**DETAIL**  
Control Joint at Bond Beam  
SCALE: NTS



**DETAIL**  
Typical Masonry Wall Opening Diagram  
SCALE: NTS



**1 FOUNDATION PLAN**  
SCALE: 3/8" = 1'-0"



**2 REINFORCING PLAN**  
Masonry Reinforcing  
SCALE: 3/16" = 1'-0"

**C DETAILS**  
SCALE: NTS

CMU LINTEL SCHEDULE			
WIDTH (W)	CLEAR SPAN	DEPTH (D)	HORZ. REINF.
8" TYP AT ALL CMU WALLS	UP TO 3'-4"	8"	(1) #6 BOTTOM
	UP TO 6'-4"	16"	(1) #6 T4B
	UP TO 14'-0"	24"	(2) #6 T4B
	UP TO 16'-0"	24"	(3) #6 T4B

PROVIDE 3000 PSI PEA-GRAVEL CONCRETE FILL FOR ALL LINTELS.

- FOUNDATION NOTES**
- THE CONCRETE MIX SHALL HAVE A MINIMUM COMPRESSIVE STRENGTH OF 3,000 PSI AT 28 DAYS. CONCRETE MIX SHALL BE IN ACCORDANCE WITH ACI-318.
  - ALL CONVENTIONAL REINFORCING STEEL SHALL MEET ASTM-A615 (GRADE 60).
  - ONE LAYER OF POLYETHYLENE VAPOR BARRIER SHALL BE PLACED UNDER CONCRETE FOUNDATION. VAPOR RETARDER TO BE 15 MIL. STRENGTH; ASTM E 1745 CLASS A, PERMEANCE LESS THAN 0.01 PERMS, EQUAL TO STEGO INDUSTRIES STEGO WRAP, ECOSHIELD-E 15 MIL BY EPRO, OR IRONBAR 15 BY PLATON FILMS. PROVIDE APPROPRIATE ACCESSORIES FOR A COMPLETE SYSTEM.
  - ALL REINFORCING STEEL AND MESH SHALL BE SECURELY SUPPORTED TO PREVENT BOTH VERTICAL AND HORIZONTAL MOVEMENT DURING CONCRETE PLACEMENT.
  - THE CONTRACTOR SHALL VERIFY ALL DROPS, OFFSETS, BRICK LEDGES, DIMENSIONS AND CONFIGURATIONS. CONTRACTOR MUST BE RESPONSIBLE FOR SAME.
  - GRADE BEAM SIZES MAY VARY BY -5%, +20%.
  - ALL SUB GRADE FILL SHALL BE SELECT GRANULAR MATERIAL COMPACTED TO 95% STANDARD PROCTOR DENSITY IN A MAXIMUM OF 6" LIFTS.
  - ALL RUNOFF WATER MUST BE CARRIED AWAY FROM THE SLAB TO PREVENT SATURATION OF THE SUB-BASE.
  - ALL TREES WITHIN CLOSE PROXIMITY SHALL BE REMOVED TO PREVENT THE ROOTS FROM EXTENDING UNDER THE SLAB.
  - PROVIDE AND MAINTAIN IMMEDIATE SITE DRAINAGE BEFORE, DURING, AND AFTER CONSTRUCTION. PROVIDE GRADING, SWELLS, AND SUMP PUMPS AS MAY BE REQUIRED TO IMMEDIATELY DRAIN ALL RAINWATER FROM THE CONSTRUCTION AREA. FOOTING EXCAVATIONS SHOULD BE OBSERVED AND CONCRETE PLACED AS QUICKLY AS POSSIBLE TO AVOID EXPOSURE OF THE FOOTING BOTTOMS TO WETTING AND DRYING. SURFACE RUNOFF WATER SHOULD BE DRAINED AWAY FROM THE EXCAVATIONS AND NOT BE ALLOWED TO POND PRIOR OR AFTER CONCRETE PLACEMENT. IF IT IS REQUIRED THAT A FOOTING EXCAVATIONS BE LEFT OPEN FOR MORE THAN ONE DAY, THEY SHOULD BE PROTECTED TO REDUCE EVAPORATION OR ENTRY OF MOISTURE.
  - TREAT SOIL BELOW SLAB FOR TERMITES.

#	DESCRIPTION	DATE



ST PHILOMENA GROTTO  
LOURDES  
FOUR LIVES

400 WESCHESTER PLACE  
SLIDELL, LA 70458  
JOB No: 11-21-2025  
DRAWN BY: CKD  
CHECKED BY: CKD  
DATE: 11-21-2025