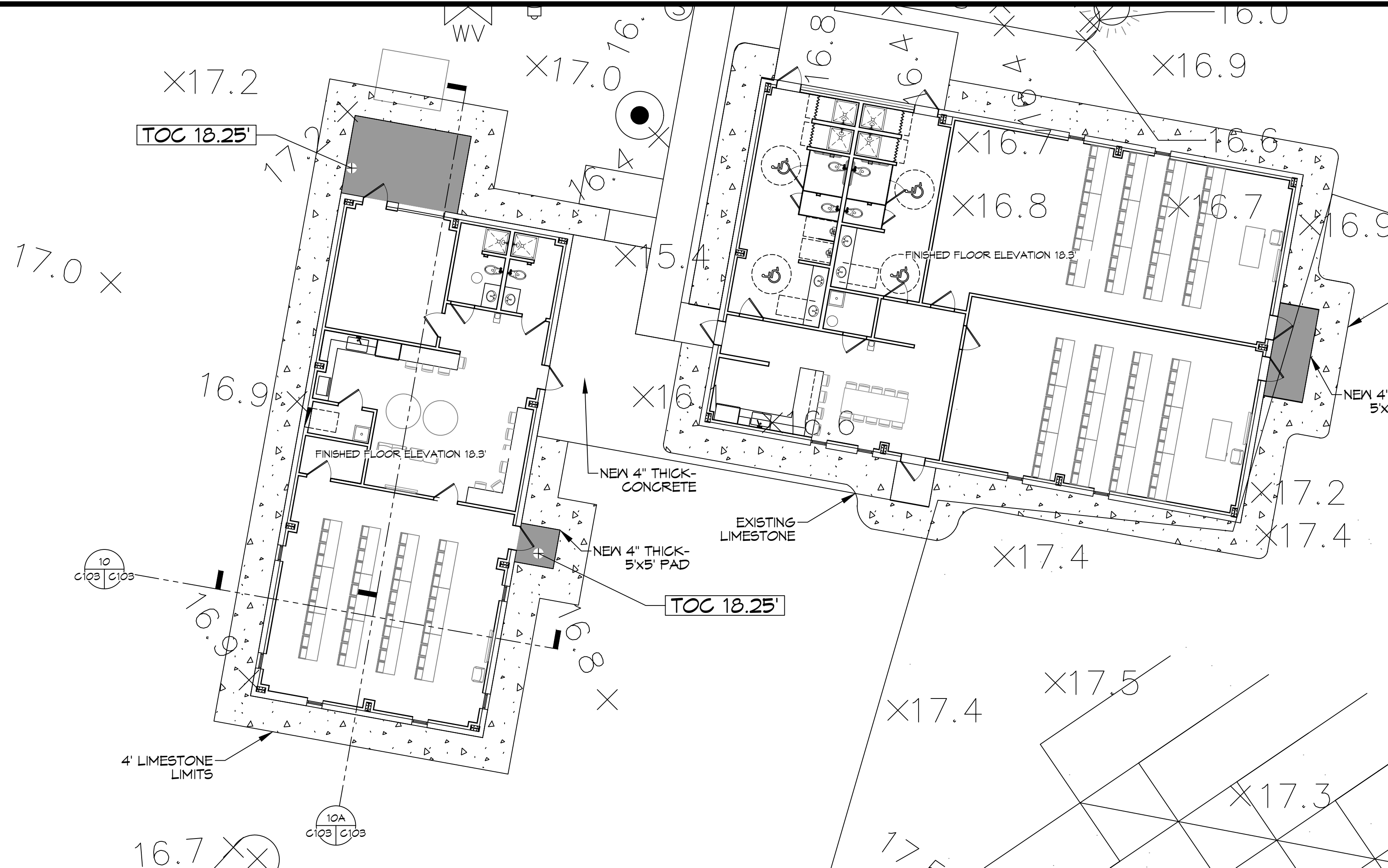
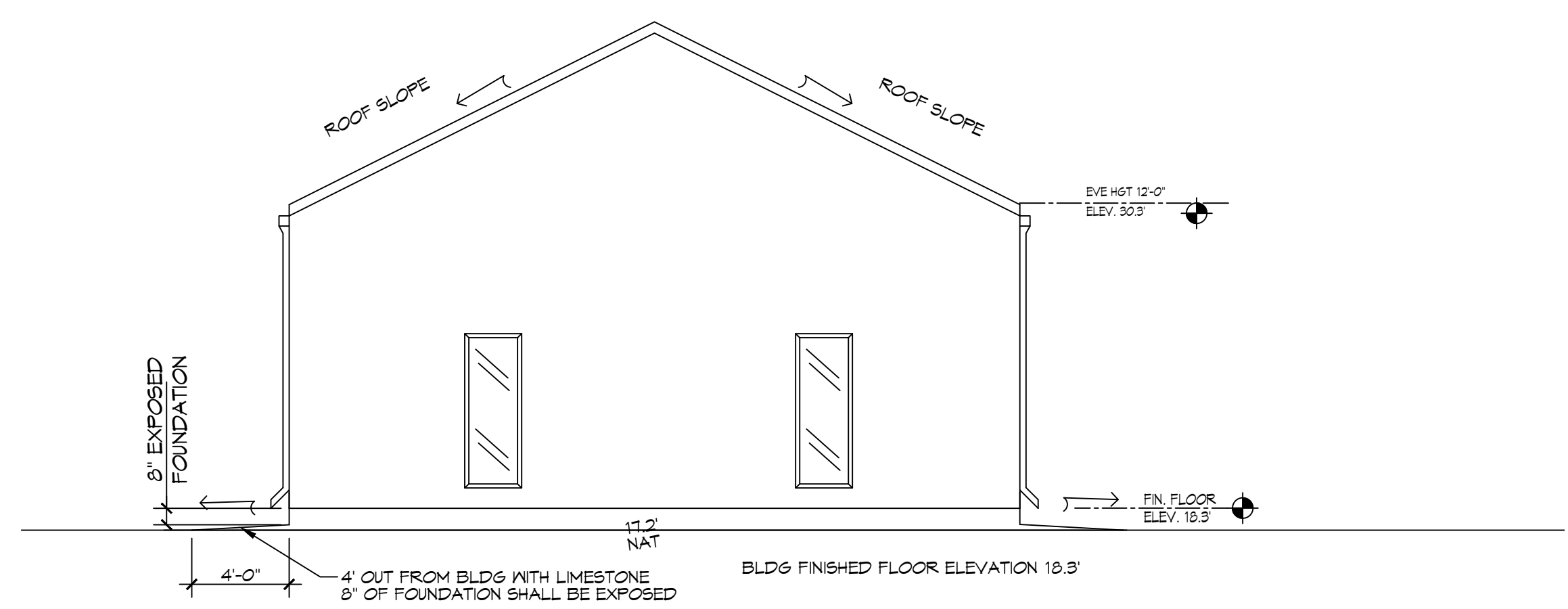


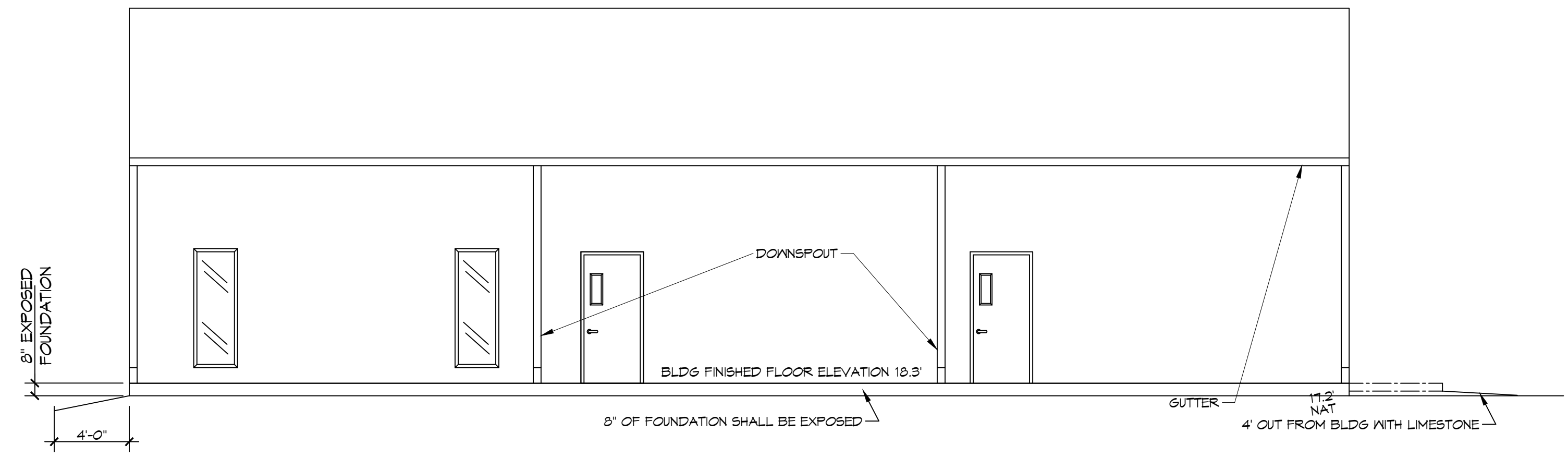
FILE NAME: \\s\...  
 PROJECT: ...  
 DATE: ...  
 DRAWN BY: ...  
 CHECKED BY: ...  
 DATE: ...



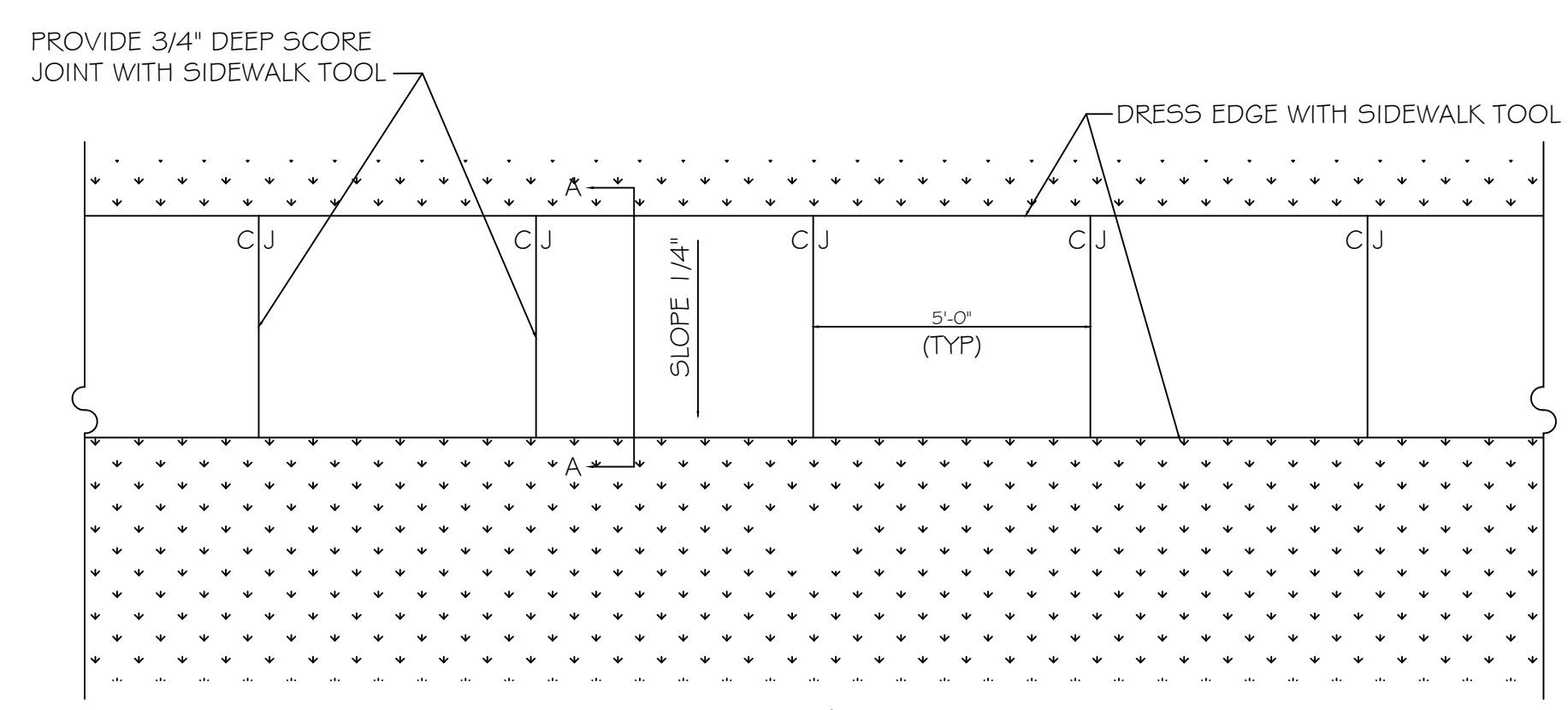
**PAVING & FILL PLAN**  
SCALE: 1" = 10'-0"



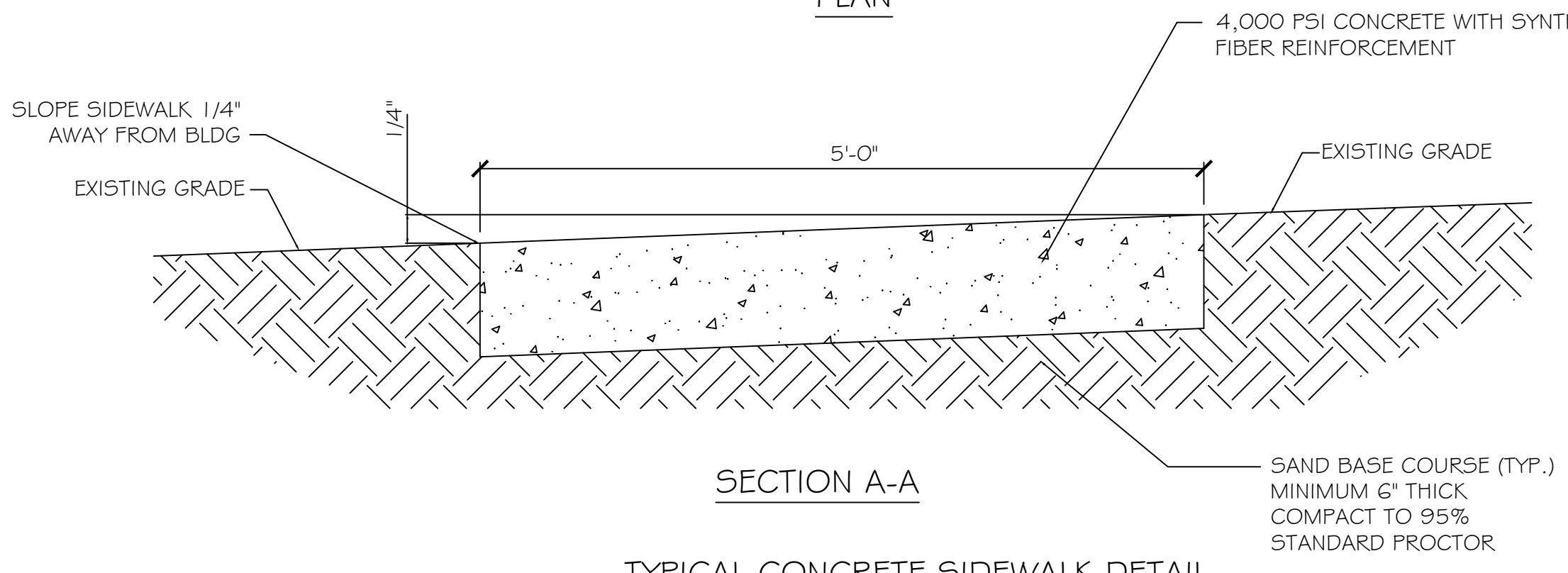
**10 CROSS SECTION**  
SCALE: 3/16" = 1'-0"



**10A CROSS SECTION**  
SCALE: 3/16" = 1'-0"



PLAN

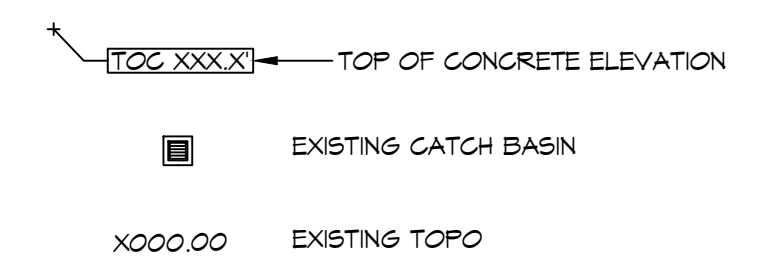


SECTION A-A  
TYPICAL CONCRETE SIDEWALK DETAIL  
N.T.S.

**GENERAL SIDEWALK NOTES**

SIDEWALKS = 4" THICKNESS (INDICATED WITH CROSS  
 MIX FOR ONE CUBIC YARD OF FIBER-REINFORCED CONCRETE:  
 28 DAY STRENGTH 4000 PSI  
 CEMENT (ASTM C-150, TYPE I/II) 4.64 SACKS (436 LBS.)  
 FLY ASH (ASTM C-618) 1.16 SACKS (109 LBS.)  
 GRAVEL (ASTM C-33, GRADE A) 1775 LBS.  
 SAND (ASTM C-33) 1226 LBS.  
 WATER (POTABLE) 30 GALLONS (250 LBS.)  
 TYPE A WATER REDUCER (ASTM C-494) 16.35 LBS.  
 AIR ENTRAINMENT 5% BY VOLUME, USE PER  
 MANUFACTURER'S SPECIFICATIONS  
 FIBER REINFORCEMENT 1.5 LBS./CY MICROFIBERS, AS  
 SPECIFIED BELOW  
 FIBER REINFORCEMENT FOR CONCRETE SIDEWALKS SHALL BE MATRIX  
 MONOFILAMENT MICROFIBER AS MANUFACTURED BY FRG INDUSTRIES OR  
 APPROVED EQUAL, APPLIED THROUGHOUT THE CONCRETE  
 MIXTURE. ALTERNATE PRODUCTS MUST BE PREAPPROVED BY THE ENGINEER  
 IN WRITING. CELLULOSE (TREATED OR UNTREATED), AR GLASS, NYLON AND  
 POLYESTER FIBERS ARE SPECIFICALLY PROHIBITED FROM USE.  
 CONTRACTOR SHALL FURNISH ALL MATERIALS, LABOR, AND EQUIPMENT  
 NEEDED TO CONSTRUCT WALKWAYS AND PADS.

**PAVING LEGEND**



**DAMMON ENGINEERING, INC.**  
 LOUISIANA & MISSISSIPPI  
 Chief Engineer: Brian Mistich, PE  
 554 Old Spanish Trail  
 Slidell, LA 70458  
 www.dammonengineering.com  
 info@dammonengineering.com  
 PH: 985.649.5832

#	DESCRIPTION	DATE



NEW TRAINING FACILITY  
 ST. TAMMANY FIRE PROTECTION  
 DISTRICT NO. 1  
 94180 S RANGE ROAD  
 SLIDELL, LA 70460  
 JOB No: 25071 DATE: 12-18-2024  
 DRAWN BY: BAW  
 C&D CHECKED BY:

SHEET TITLE:  
 PAVING & FILL PLAN  
 DRAWING NUMBER:  
**C103**  
 SHEET No: 5 of 15