

DX SPLIT SYSTEM SCHEDULE

AIR HANDLER												CONDENSER					REMARKS	
TAG	MAKE	MODEL	NOMINAL TONS	TOTAL CFM	Motor HP	ESP (" WC)	HEAT (Kw)	POWER			TAG	NOMINAL TONS	MAKE	MODEL	POWER			
								VAC	PH	MCA					VAC	PH		MCA
AHU-1	Trane	5TEM4D04AC31S	3	1200	1/2	0.4	10.8	208	1	42	CU-1	3	Trane	5TTR5036A1000	208	1	18	1, 2

- NOTES:**
- Provide single point power connection, time delay relay, condensate overflow switch & programmable 7/24 thermostat.
 - Cooling capacities to be rated in accordance with AHRI standard 210/290 for ASHRAE standard design weather conditions in New Orleans, LA.

DIFFUSER SCHEDULE

TAG	SERVICE	NECK SIZE	DESCRIPTION
A	Supply Air	Ref. Plan	12"x 12" Adjustable Square Cone Diffuser, Price ASCDA w/ Insulated Back Panel
B	Return Air	Ref. Plan	20" x 20" Perforated Ceiling Return Grille, Price PDR

- Notes:**
- Seal around perimeter of diffusers/grilles to prevent moisture migration from attic space
 - Coordinate with owner / architect for color and finish
 - R value of insulated back panels to exceed R-6

Exhaust Fan Schedule

Tag	Fan		Power				Make / Model	Remarks
	Airflow (CFM)	TSP (" wc)	Amps	Volts	Phase	Hz		
EF-1	80	0.2	0.4	120	1	60	Broan A80	1, 2, 3
EF-2	50	0.2	0.2	120	1	60	Broan AE50	1, 2, 3

- Interlock with light switch
- Furnish with backdraft damper.
- Install per Manufacturer's recommendations.

GENERAL HVAC NOTES

- CONCEALED DUCTWORK TO BE GALVANIZED SHEET METAL WRAPPED WITH FIBROUS GLASS DUCT WRAP WITH FSK VAPOR BARRIER, MIN R-6. INSTALLED PER SMACNA STANDARDS. DUCT WORK IMMEDIATELY DOWNSTREAM FROM RTU SHALL BE LINED FOR SOUND ATTENUATION.
- EXPOSED DUCTWORK TO BE GALVANIZED SHEET METAL LINED WITH FIBROUS GLASS DUCT LINER, MIN R-6. INSTALLED PER SMACNA STANDARDS.
- ROUND FLEXIBLE DUCT TO BE UL-181, CLASS 1, AIR DUCT MATERIALS.
- DUCT SIZES SHOWN ARE CLEAR INSIDE DIMENSIONS.
- IN ALL SYSTEMS OVER 2000 CFM AND LESS THAN 15,000 CFM, SMOKE DETECTORS SHALL BE INSTALLED IN ACCORDANCE WITH NFPA 12E IN THE RETURN DUCT DOWNSTREAM OF THE AIR HANDLING UNIT AND ALL FILTERS TO AUTOMATICALLY STOP THE FAN.
- PROVIDE UL LISTED 125 F° FIRESTAT IN RETURN AIR OF EACH SYSTEM UNDER 2000 CFM TO SHUT DOWN THE FAN IN THE EVENT OF FIRE.
- PROVIDE UL RATED FIRE DAMPERS WHERE REQUIRED AT ALL DUCT PENETRATIONS OF FIRE-RATED ASSEMBLIES AND WHERE REQUIRED BY CODE, INCLUDING OUTSIDE AIR INTAKES AND EXHAUST FANS.
- CONDENSATE DRAINS TO BE PVC PIPE RUN TO PLUMBERS P-TRAP WITHIN FIVE FEET OF AIR HANDLING UNITS.
- ALL AIR HANDLING SYSTEMS TO BE BALANCED TO ASSURE PROPER AIR FLOWS PER PLANS.
- ALL THERMOSTATS TO BE AUTOMATIC CHANGEOVER WITH HEAT SWITCH.
- EXHAUST FAN SHALL BE CONTROLLED BY A SWITCH ON THE WALL IN THE SAME LOCATION AS LIGHT SWITCH(S). PROVIDE BACK DRAFT DAMPER.
- PROVIDE AND INSTALL WATER PROOF GRILLE VENT IN PROPER ROOF LOCATION FOR PLUMBING FIXTURE EXHAUST.
- ALL SUPPLY AIR VENTS SHALL BE EQUIPPED WITH AIR CONTROL DAMPERS AT THE REGISTER.
- LOCATE OUTDOOR UNITS AS SHOWN ON ARCHITECTURAL DRAWINGS.
- REFRIGERANT LINES SHALL BE SIZED BY UNIT MANUFACTURER AND INSTALLED ACCORDING TO MANUFACTURER'S INSTRUCTIONS.
- FRESH AIR SHALL BE SUPPLIED TO EACH AIR HANDLER THROUGH EXTERIOR WALL DUCT SUPPLIED WITH A CONTROL DAMPER.
- ALL ELECTRICAL, MECHANICAL, AND PLUMBING PENETRATING FIRE WALLS SHALL BE FIRE CAULKED. (PENETRATIONS THROUGH RATED CONSTRUCTION SHALL BE SEALED WITH A MATERIAL CAPABLE OF PREVENTING THE PASSAGE OF FLAMES AND HOT GASES WHEN TESTED IN ACCORDANCE WITH ASTM-E8-14).
- ALL MECHANICAL SYMBOLS ARE DRAWN DIAGRAMMATICALLY. CONTRACTOR TO VERIFY WITH OWNER LOCATIONS OF VENTS, DAMPERS, REGISTERS, ETC.
- FLEXIBLE DUCTWORK LENGTH NOT TO EXCEED 12'-0". SUPPORT FLEX DUCT TO PREVENT SAGGING
- REFER TO REFLECTED CEILING PLAN FOR FINAL GRILLE AND DIFFUSER LOCATIONS AND COORDINATE AS REQUIRED.
- FINAL LOCATION OF TEMPERATURE CONTROLS TO BE COORDINATED WITH OWNER AT JOB SITE.
- PROVIDE AND INSTALL SMOKE DETECTORS AS APPROVED BY LOCAL A.H.J.S. PLACE NEAR R/A AND S/A OPENINGS OF AHU AND PROVIDE, WITH ACCESS PANEL, WIRING BY ELECTRICAL CONTRACTOR.
- FRESH AIR INTAKES ARE REQUIRED TO HAVE MOTORIZED OR GRAVITY DAMPERS TO SHUT OFF WHEN SYSTEM IS NOT RUNNING.
- PROVIDE BIRD SCREENS AT ALL EXTERIOR MECHANICAL PENETRATIONS.
- COORDINATE WALL MOUNTED THERMOSTAT LOCATIONS WITH ALL OWNER FURNISHED ITEMS EITHER WALL MOUNTED OR FLOOR MOUNTED AGAINST PARTITIONS. REFER TO ARCHITECTURAL DRAWINGS.
- PROVIDE MIN 18 GA GALVANIZED SHEET METAL TO BLANK-OFF GABLE VENTS WHERE INTAKE/EXHAUST DUCTS OCCUR.

DAMMON ENGINEERING, INC.
 LOUISIANA & MISSISSIPPI
 Chief Engineer: Brian Mistich, PE
 554 Old Spanish Trail
 Slidell, LA 70468
 www.dammonengineering.com
 info@dammonengineering.com
 PH: 985.649.5832

REVISIONS	DATE	DESCRIPTION

SEAL:

MECHANICAL LEGEND

	24"x24" 4-WAY SUPPLY AIR GRILLE		12X12 SUPPLY AIR GRILLE
	3-WAY SUPPLY AIR GRILLE		24X24 RETURN AIR FILTER GRILLE
	2-WAY SUPPLY AIR GRILLE		EXHAUST FAN
	FIRE DAMPENER- AT EVERY FIRE RATED WALL		THERMOSTAT
	ROUND FLEX DUCT, MAX. LENGTH 12'-0", MIN. R-6. DUCT SIZE AS FOLLOWS: 250 CFM TO 350 CFM = 9" 200 CFM TO 250 CFM = 8" 150 CFM TO 200 CFM = 7" 100 CFM TO 150 CFM = 6"		IN LINE EXHAUST FAN WITH MOTOR
	HVAC SUPPLY DUCT		DAMPER CONTROL (V/D)

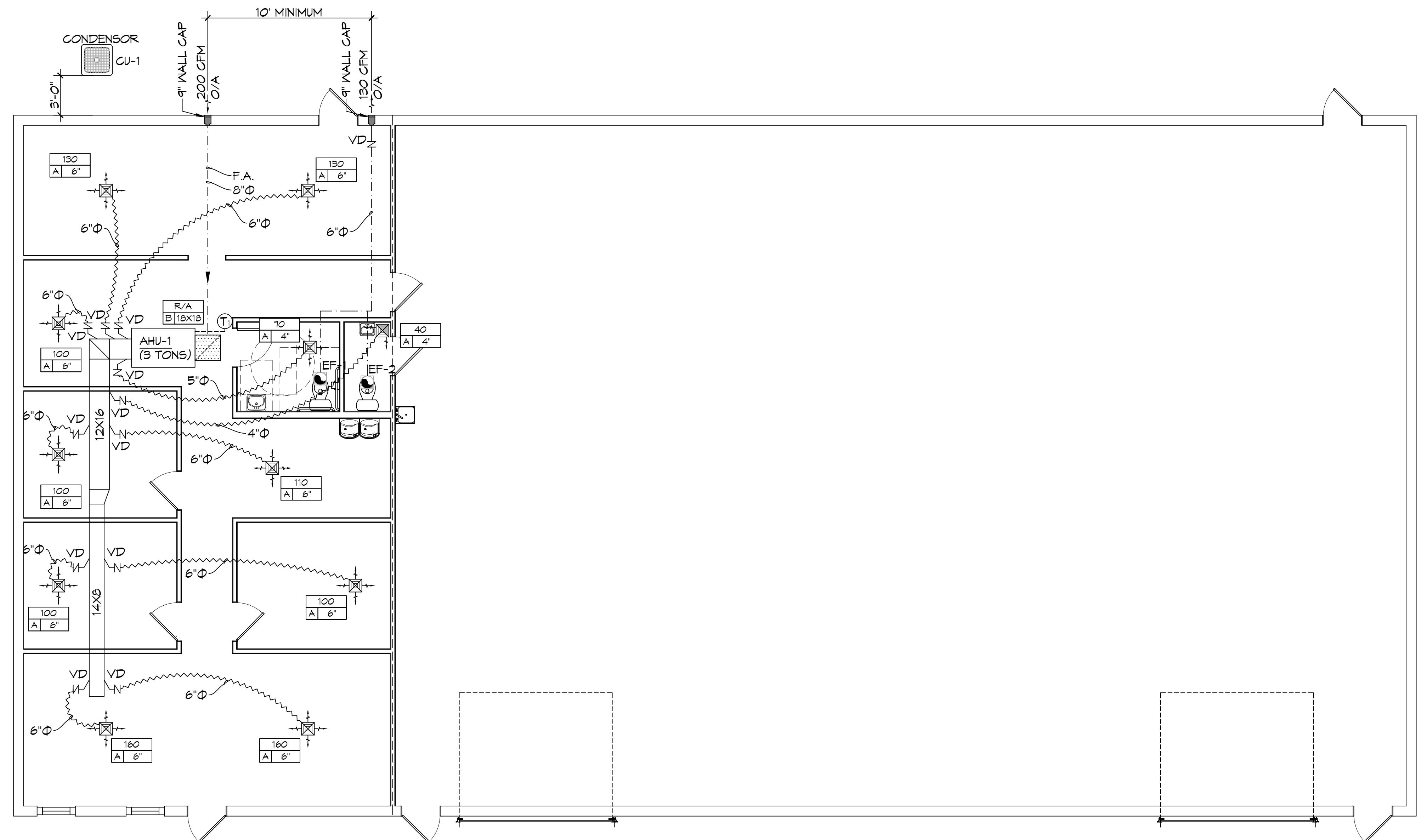
CFM MARK | NECK SIZE

NEW OFFICE WAREHOUSE
LEWIS A/C
 39104 COAST BOULEVARD
 SLIDELL, LA 70460
 JOB No: 1-12-2026
 DATE: 1-12-2026
 DRAWN BY: GSK
 CHECKED BY: GSK

SHEET TITLE:
 MECHANICAL PLAN

DRAWING NUMBER:
M101

SHEET No: 10 of 1



22 WAREHOUSE ADDITION
 SCALE: 3/16"=1'-0"