

**SHELF-BACK LAVATORY FAUCET
K-8044**

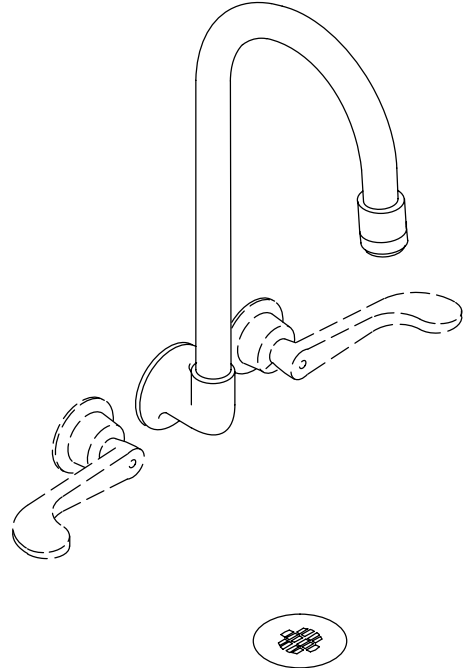
FEATURES

- Brass construction
- For 5-1/2" centers
- Brass valve bodies
- Valvet® valves
- 3-3/8" gooseneck spout
- 2.0 gallons per minute
- Grid drain with tailpiece
- Variety of handle style options

CODES/STANDARDS APPLICABLE

Specified model meets or exceeds the following:





- ASME/ANSI A112.18.1M



COLORS/FINISHES

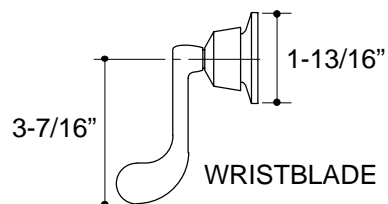
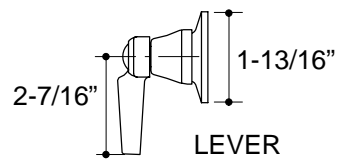
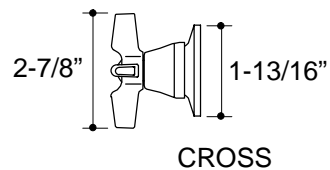
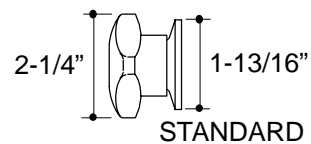
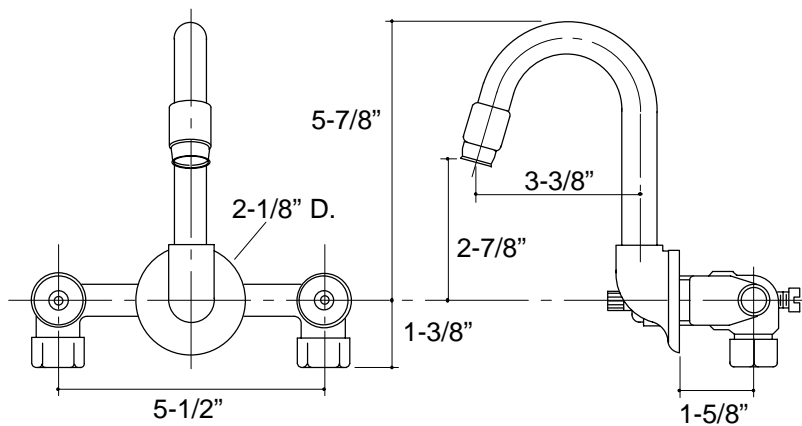
- CP Polished Chrome

SPECIFIED MODEL:

Model	Description		 ADA	 ADA	 ADA
K-8044-2A	With Standard Handles	<input type="checkbox"/> CP			
K-8044-3A	With Cross Handles		<input type="checkbox"/> CP		
K-8044-4A	With Lever Handles			<input type="checkbox"/> CP	
K-8044-5A	With Wristblade Handles				<input type="checkbox"/> CP

PRODUCT SPECIFICATION:

Shelf-back lavatory faucet shall be of brass construction. Faucet shall feature brass valve bodies. Faucet shall also feature Valvet valves. Product shall include 5-1/2" centers, 3-3/8" gooseneck spout, grid drain with tailpiece, and handles. Faucet shall be Kohler Model K-8044-____-CP.



PRODUCT DIAGRAM