

Addendum  
Date December 27, 2018  
Revised February 21, 2019

Drawn by JMW  
Scale as noted  
Sheet Title

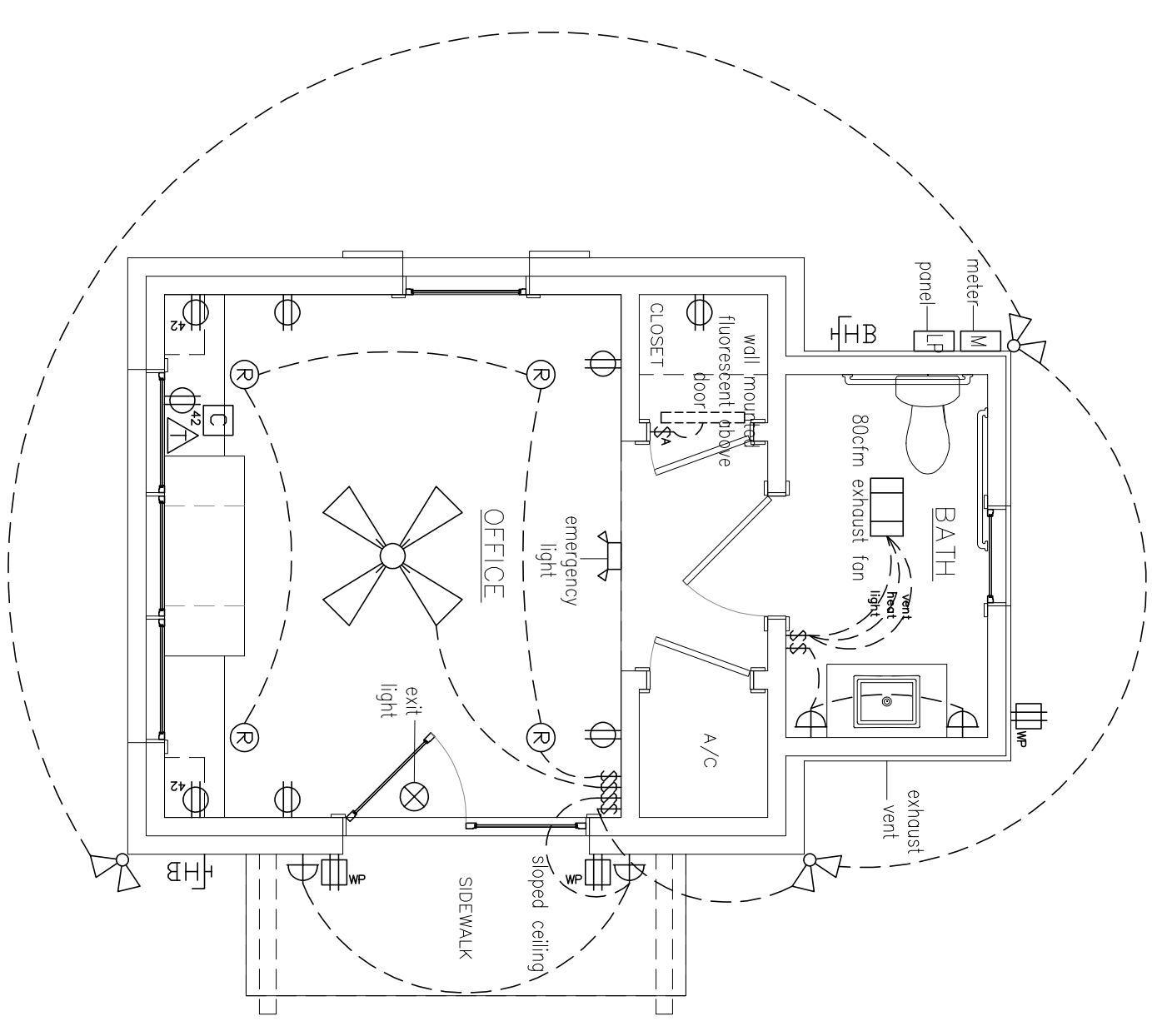
Lighting/  
Interiors

Sheet No.

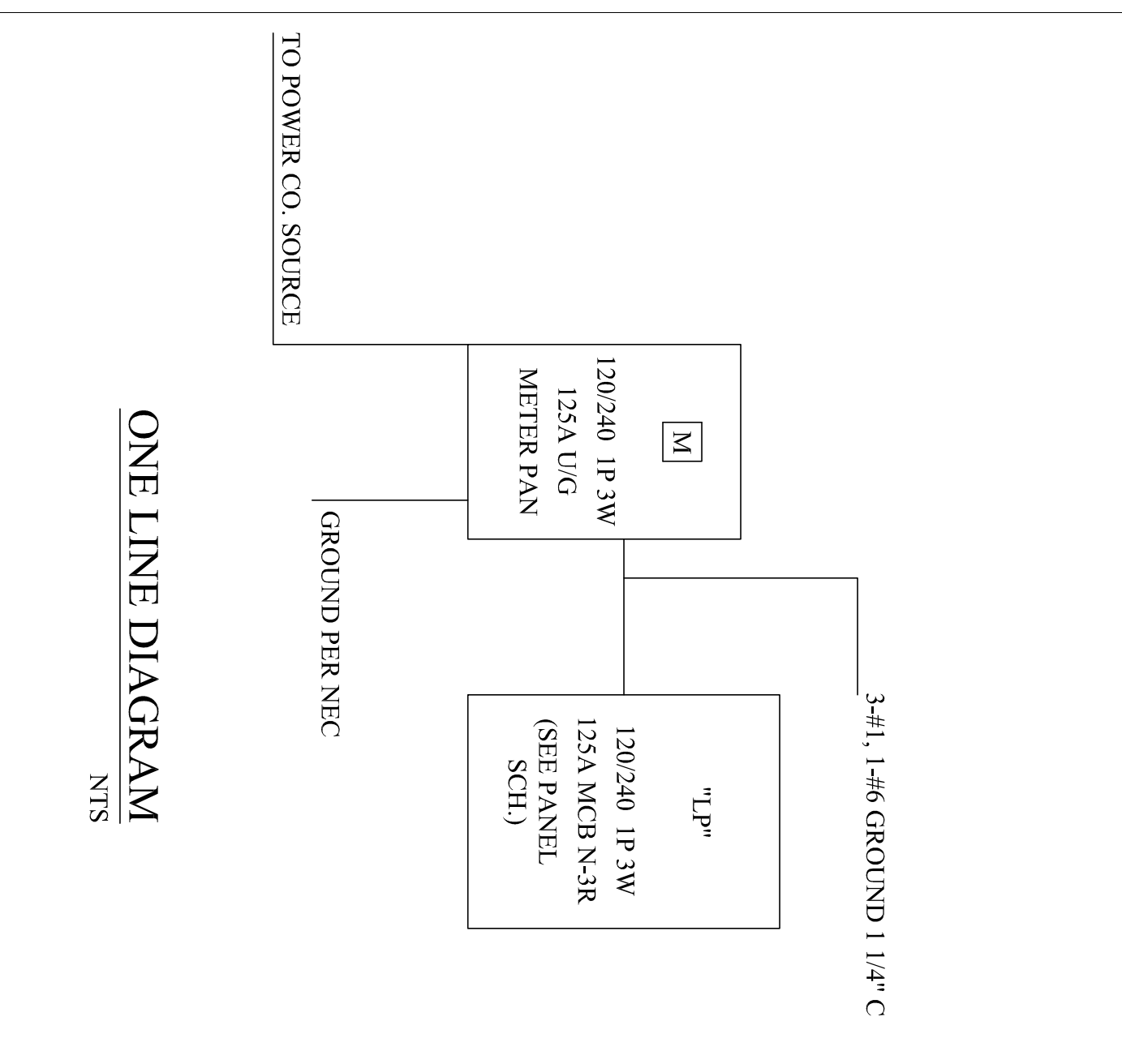
**A4**

SYMBOL	DESCRIPTION	SYMBOL	DESCRIPTION
⊙	RECESSED FIXTURE	-----	FLUORESCENT STRIP FIXTURE
⊙	EXTERIOR RECESSED FIXTURE	▭	48" 2-LAMP FLUORESCENT FIXTURE
⊙	WATERPROOF RECESSED FIXTURE	⊙	CEILING FAN, WITHOUT LIGHT KIT
⊙	WALL SCONCE - ELECTRIC	⊙	SPOTLIGHTS
⊙	PENDANT FIXTURE		
⊙	UP LIGHT AT EXTERIOR		
⊙	HEAT, VENT, LIGHT		

MEP SYMBOLS	DESCRIPTION	SYMBOL	DESCRIPTION
\$	SINGLE SWITCH, 42" A.F.F.	⊙	220 V OUTLET
\$	SINGLE SWITCH, 42" A.F.F., AUTO. TURN ON W/ DOOR	⊙	GROUND FAULT INTERRUPTED OUTLET, WEATHER PROOF
\$	3-WAY SWITCH, 42" A.F.F.	⊙	HOSE BIB
\$	4-WAY SWITCH, 42" A.F.F.	⊙	CABLE OUTLET, 18" A.F.F.
\$	DIMMER SWITCH, 42" A.F.F.	⊙	TELEPHONE, 18" A.F.F.
\$	AUTOMATIC DOOR SWITCH	⊙	SMOKE DETECTOR
⊙	DUPLEX OUTLET, 18" A.F.F.	⊙	THERMOSTAT
⊙	DUPLEX OUTLET, DIST. A.F.F.		
⊙	GROUND FAULT INTERRUPTED OUTLET, DIST. A.F.F.		
⊙	GAS LOCATION		



Lighting Plan  
Scale: 1/4" = 1'-0"

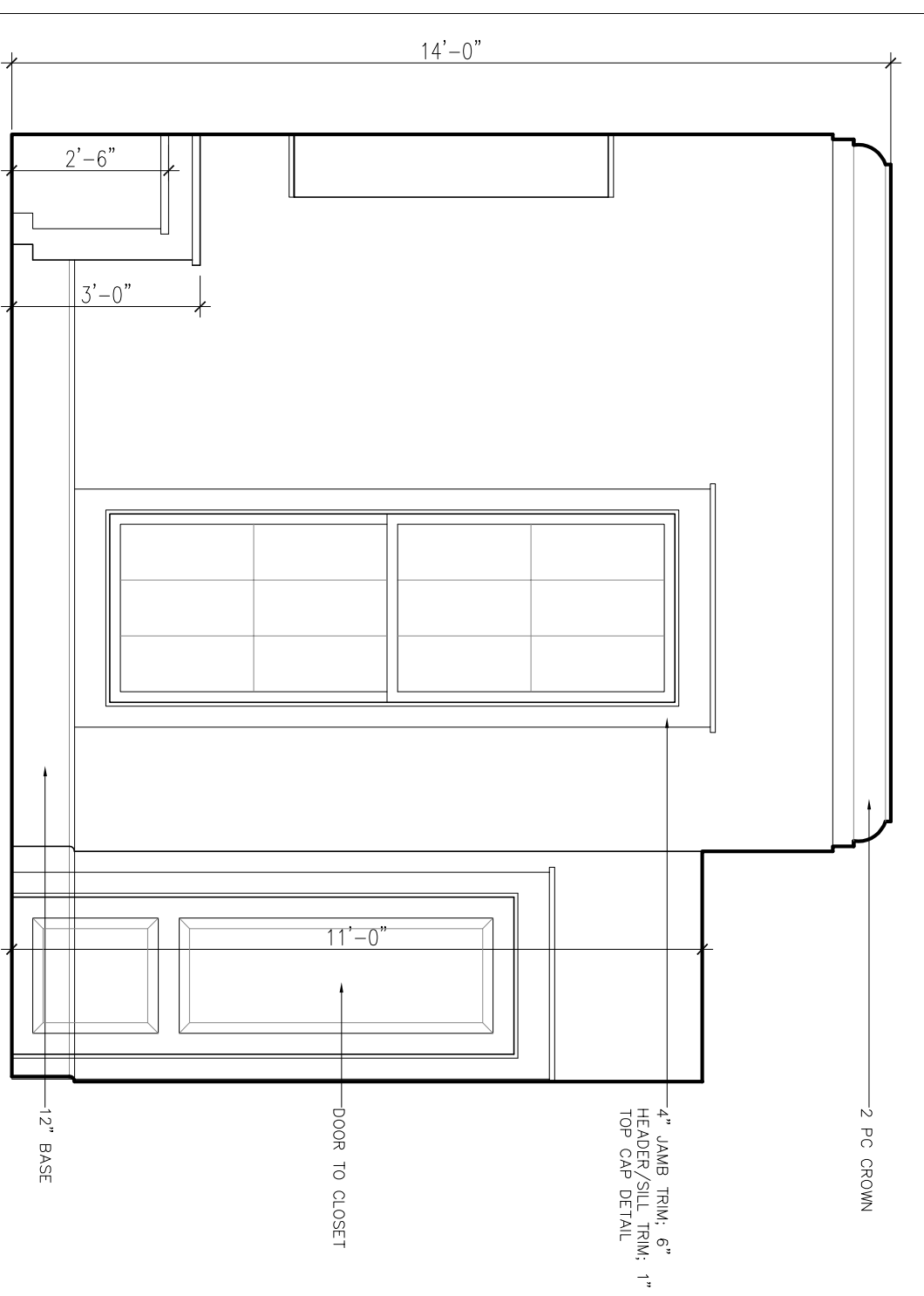


ONE LINE DIAGRAM  
NTS

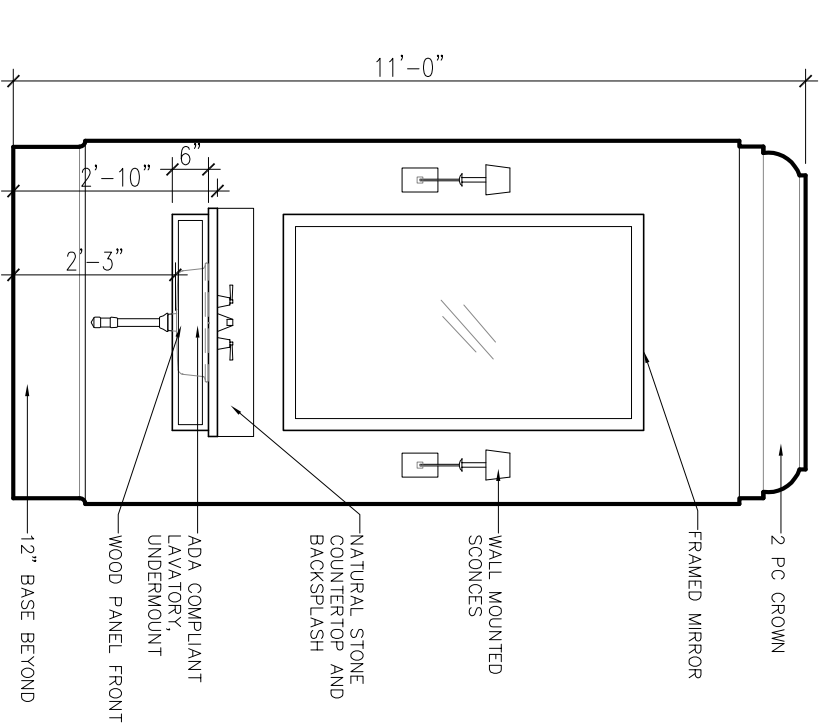
120/240 1P 3W 125A MCB N-R SURFACE MOUNT 100KAC

Circuit No.	Description	Conductor			Breaker Size	Volts-Amps			
		Size	A	C		A	A	C	
1	HVIL IN BATHROOM	#12	1800	1000	IP 20A	1000	750	#12	CEILING FAN, OFFICE LIGHTING
3	EXTERIOR FLOODS & LIGHTS	#12	1000	1000	IP 20A	900	750	#12	BATHROOM SCONCE, CLOSET LIGHT
5	BEAR WIP BATH GFI CLOSET RECEPTACLES	#12	720	360	IP 20A	900	360	#12	OFFICE RECEPTACLES
7	COUNTER TOP REC. EXT. WIP GFHS	#12	2880	360	IP 20A	120	360	#12	COUNTER TOP REC. EXT. WIP GFHS
9	P7AC UNIT	#10	2880	2880	2P 30A				EMERGENCY AND EXIT LIGHTS
11		PHASE	5400	4240		3020	1110		
		POTOTAL				7420	5380		
		TOTAL VA				12770			

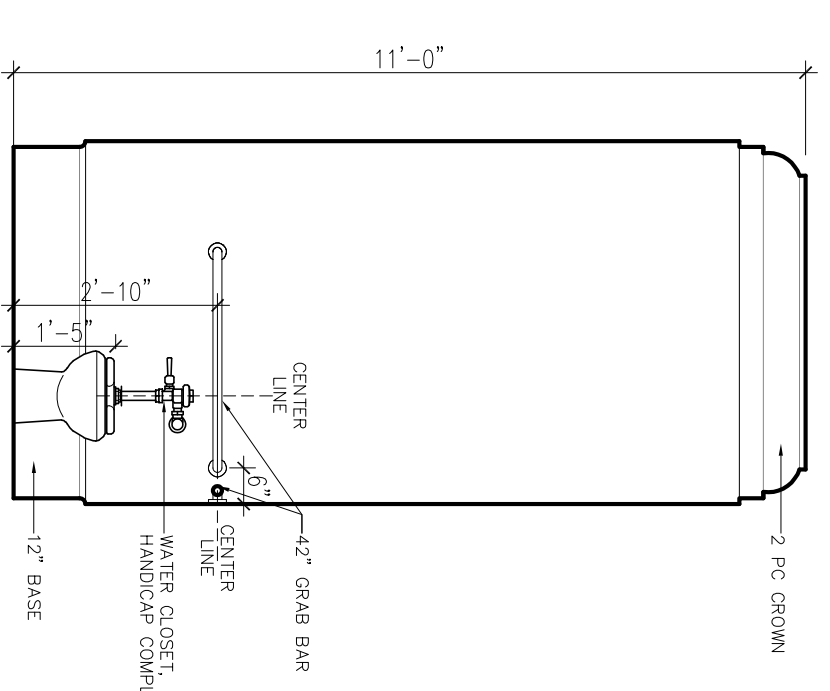
PANEL "LP"



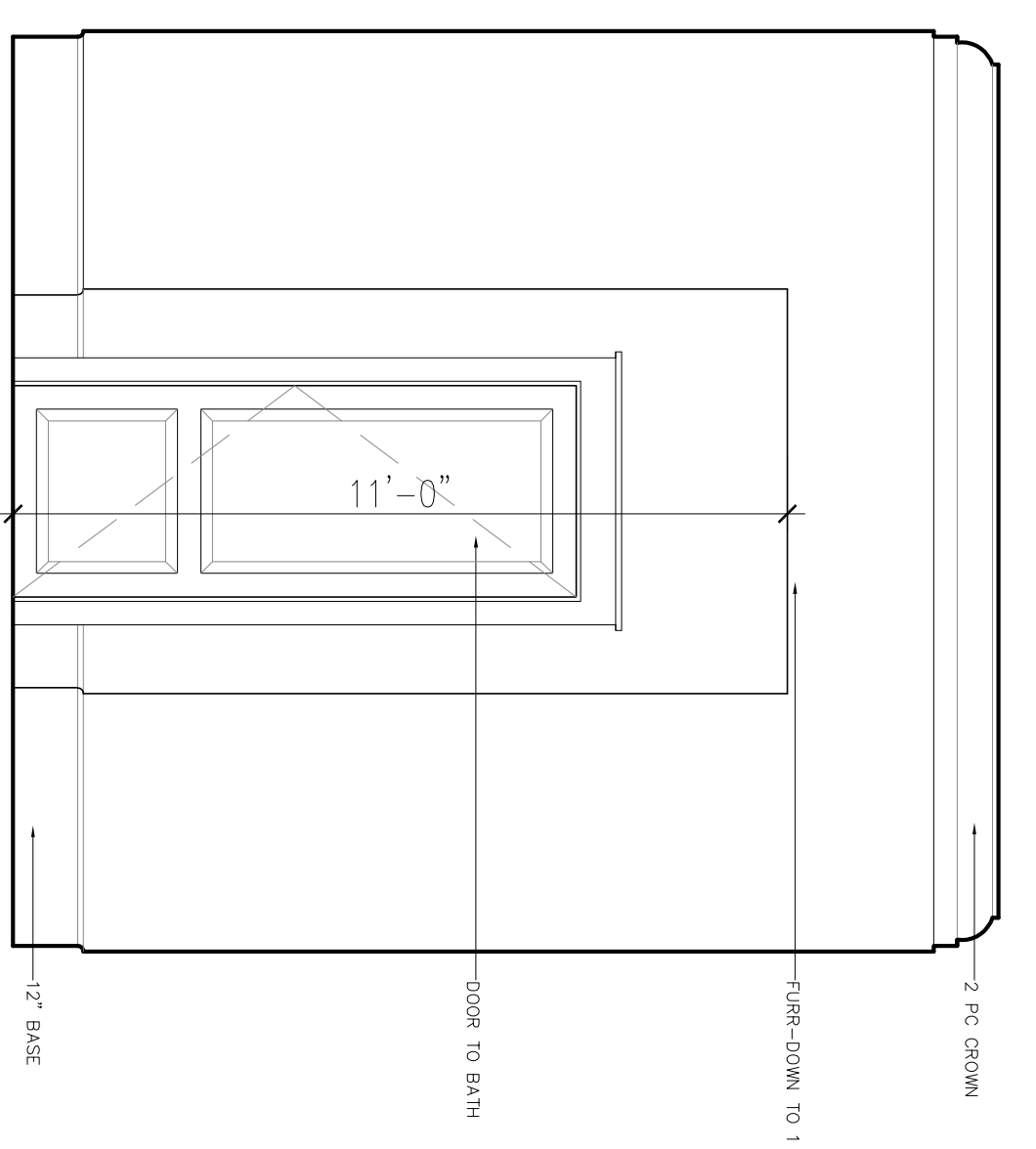
2 Office  
Scale: 3/8" = 1'-0"



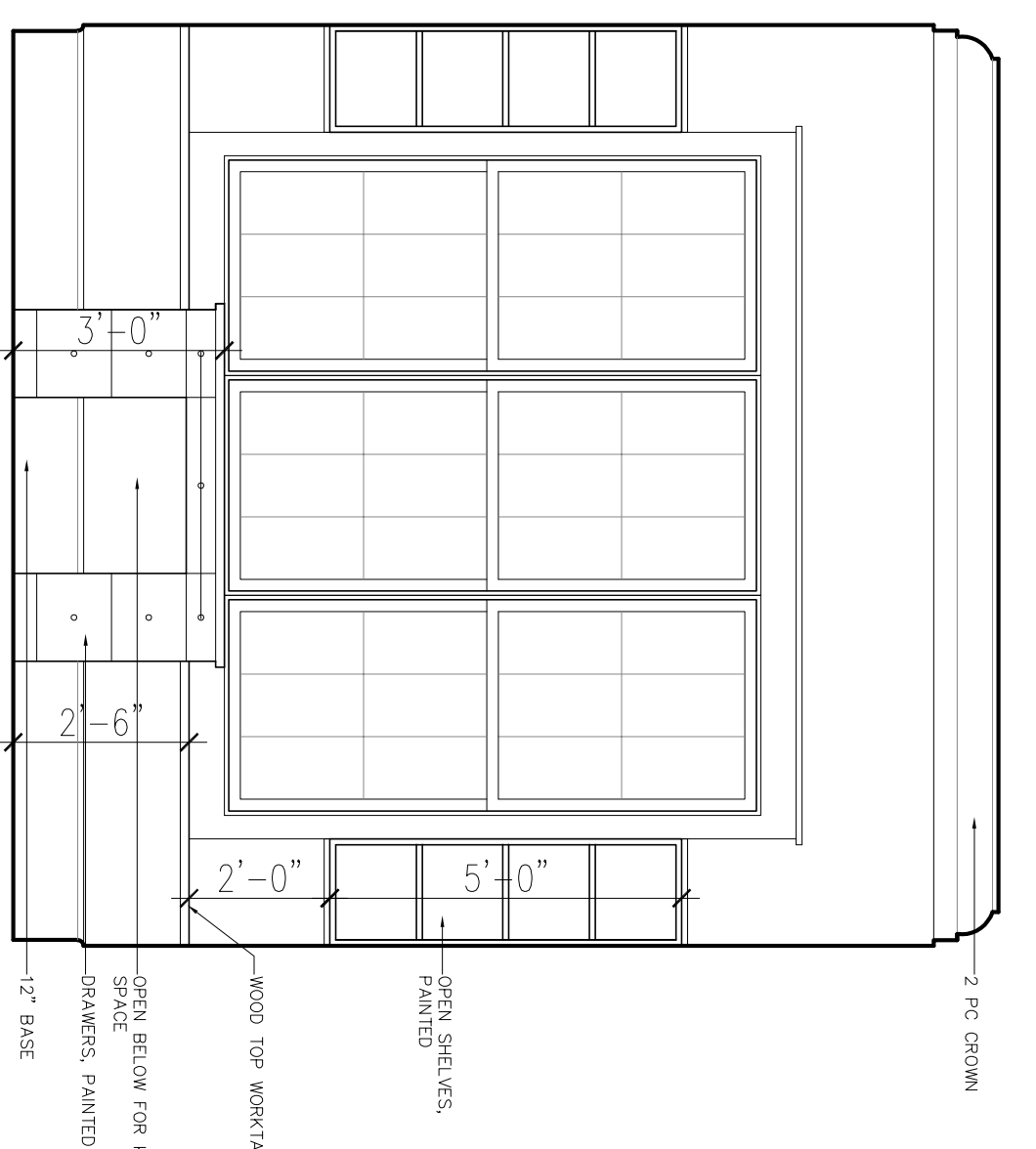
3 Bath  
Scale: 3/8" = 1'-0"



4 Bath  
Scale: 3/8" = 1'-0"



5 Office  
Scale: 3/8" = 1'-0"



6 Office  
Scale: 1/4" = 1'-0"

BEAU CHENE

studioMV