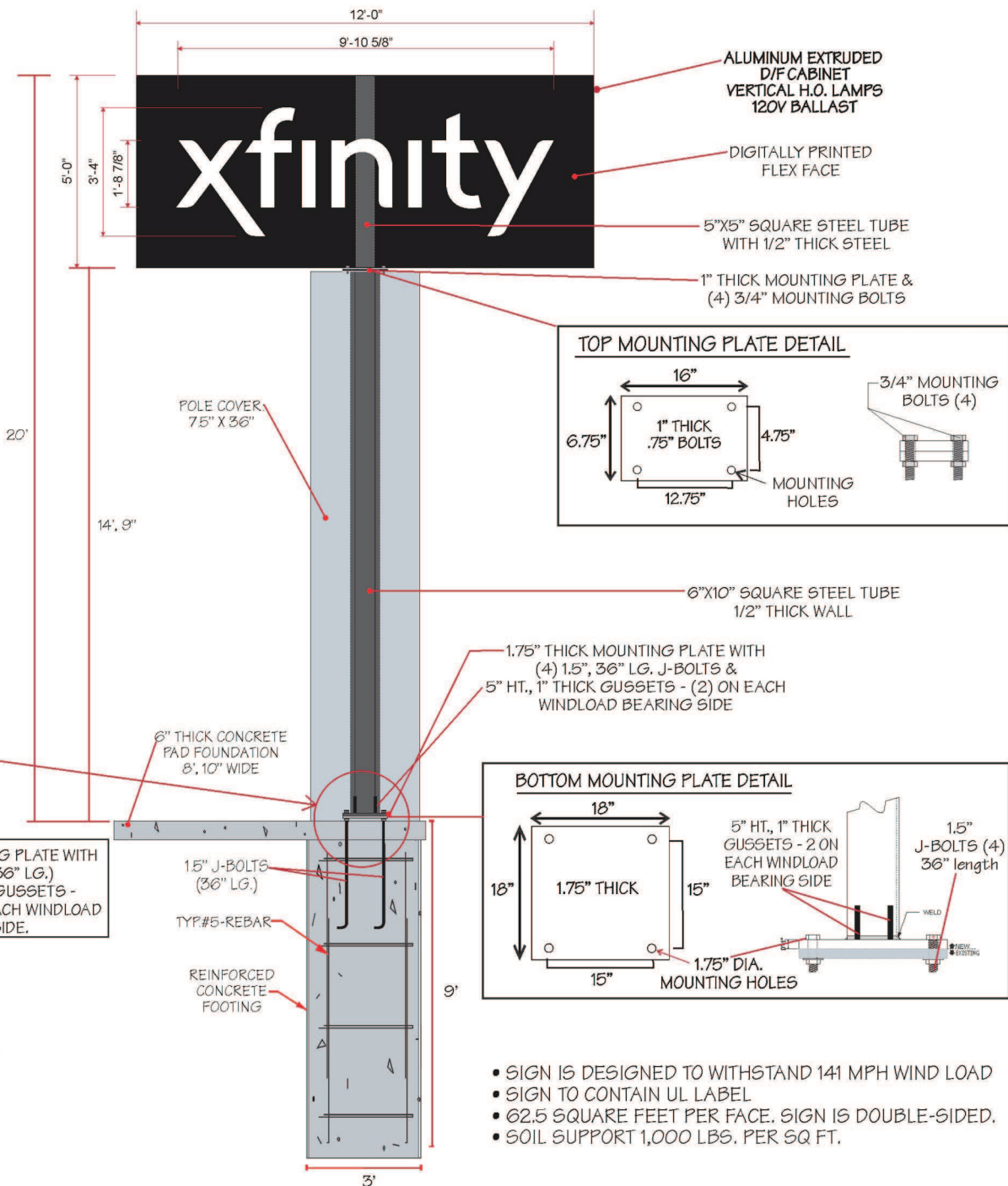
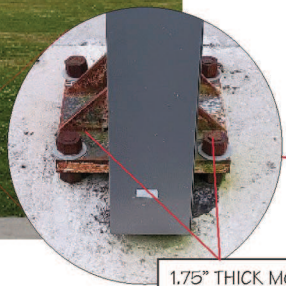


## • Two sided Backlit Pole-mounted Sign Cabinet



- SIGN IS DESIGNED TO WITHSTAND 141 MPH WIND LOAD
- SIGN TO CONTAIN UL LABEL
- 62.5 SQUARE FEET PER FACE. SIGN IS DOUBLE-SIDED.
- SOIL SUPPORT 1,000 LBS. PER SQ FT.

# DAMMON

ENGINEERING, INC.

LOUISIANA & MISSISSIPPI  
 51481 Louisiana PH: 504-734-9899 Fax: 504-734-9369 www.dammonengineering.com info@dammonengineering.com

**ALTERNATIVE SIGNS & GRAPHICS**  
 1301 EDWARDS AVE., SUITE A • ELMWOOD BUSINESS PARK • ELMWOOD, LA 70123  
 PHONE: 504-734-9899 FAX: 504-734-9369 TOLL FREE: 1-888-893-2742

JOB NAME: \_\_\_\_\_  
 ADDRESS: \_\_\_\_\_  
 SALES PERSON: \_\_\_\_\_  
 DESIGNER: \_\_\_\_\_  
 DATE: \_\_\_\_\_

