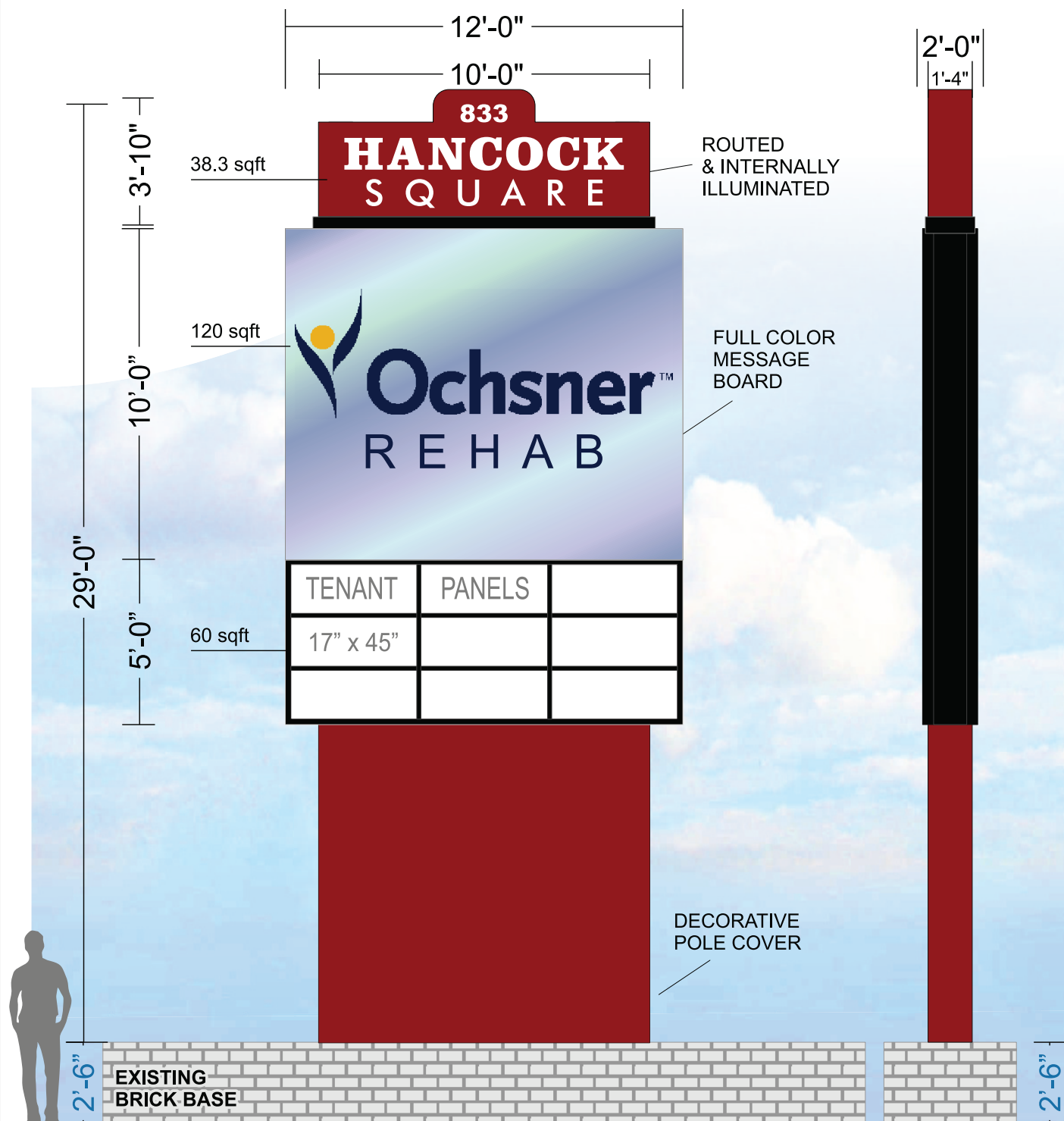
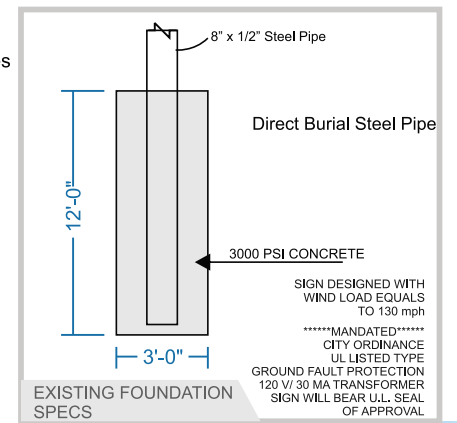
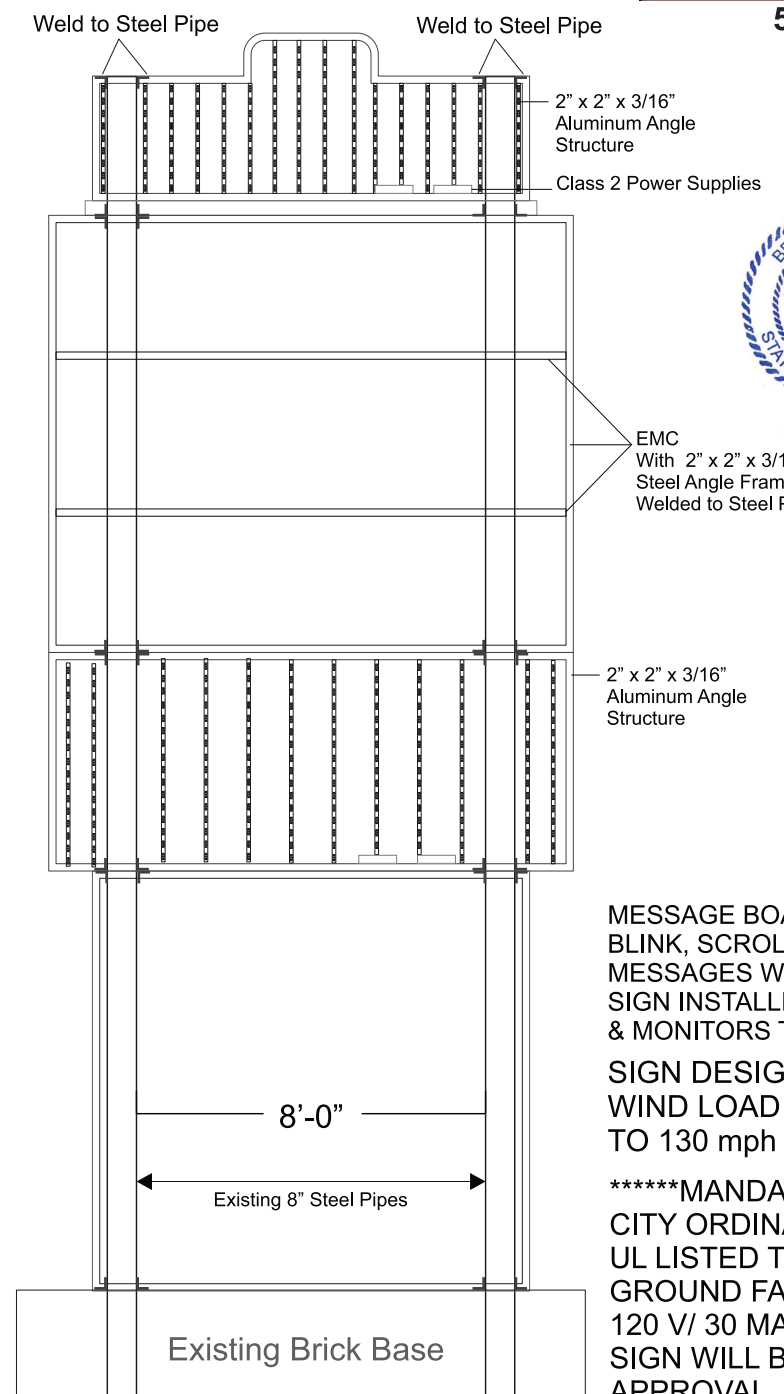


218.3 SQ FT TOTAL SIGNAGE



554 Old Spanish Trail
Slidell, LA 70458
(985-649-5832)

Refurbish Existing Multi-Tenant Pylon Sign
All Existing Cabinets to Be Removed
Topper- Fabricated Aluminum Cabinet, Routed & Backed With 3/16" White Acrylic & Internally Illuminated With White LEDs



Includes (1) Double Sided, Full Color LED Message Board
Will Use Existing Steel Pipes
Bottom Cabinet- Internally Illuminated Cabinet With White Acrylic Faces. Tenant Graphics TBD
Sign To Be Painted & Coated With Trico-Plex Stucco Finish.
Exact Colors TBD

MESSAGE BOARDS WILL NOT BLINK, SCROLL, FADE OR ANIMATE. MESSAGES WILL HAVE MIN HOLD OF 4SECS SIGN INSTALLED WITH AUTOMATED LIGHT & MONITORS TO ADJUST BRIGHTNESS
SIGN DESIGNED WITH WIND LOAD EQUALS TO 130 mph
*****MANDATED*****
CITY ORDINANCE
UL LISTED TYPE
GROUND FAULT PROTECTION
120 V/ 30 MA TRANSFORMER
SIGN WILL BEAR U.L. SEAL OF APPROVAL



1310 Carroll St.
Kenner, La. 70062
Office: 504-353-1654
Toll free: 1-833-896-2724
Fax: 504-467-5206

Job Name: Hancock Square Designer: Monica M Tymon Sketch #: 18-0236-P3R2
Location: 833 Hwy 90 Salesman: Bruce Gwyn Scale: 3/16" = 1'-0"
Bay St. Louis, MS 39520 Contact Person: _____ Contact Number: _____

THESE PLANS AND SPECIFICATIONS HAVE BEEN PREPARED BY ME OR UNDER MY SUPERVISION. TO THE BEST OF MY KNOWLEDGE AND BELIEF THEY CONFORM TO ALL CITY REQUIREMENTS. I AM NOT GENERALLY ADMINISTERING THE WORK. ALL ELECTRIC SIGNS UL LISTED/WINDLOAD OF 130 MPH THIS DRAWING IS THE PROPERTY OF ALLIED BRANDING SOLUTIONS AND CANNOT BE DUPLICATED WITHOUT PERMISSION.