

ELEVATIONS



National Headquarters: 1077 West Blue Heron Blvd.
 West Palm Beach, Florida 33404
 800.772.7932
 www.atlasbtw.com

Revisions:		

ELV

PM: W.Y	Address: 2167 Gause Blvd. E
Drawn By: TLD	City State: Slidell, LA
Date: 02.16.2022	Drawing Number: 135577

Multi Tenant Pylon | Replacement Faces

Action:

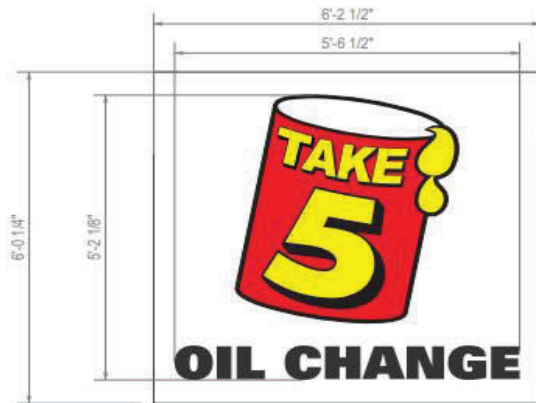
- Remove faces from existing pylon sign.
- Manufacture and install (2) new flat polycarbonate faces with vinyl applied.

Verify Dimensions prior to manufacturing.

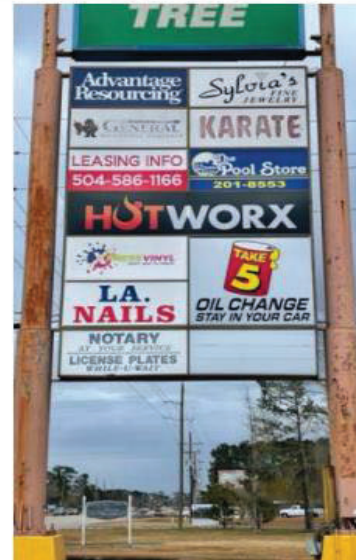
FACE REPLACEMENT ONLY

Material & Color:

- Vinyl - 3M 3630-235 Autumn Yellow
- Vinyl - 3630-93 Fire Engine Red
- Vinyl - 3M 3630-22 Black
- Substrate - White Polycarbonate



Scale 1/2" = 1'



National Headquarters: 1077 West Blue Heron Blvd.
West Palm Beach, Florida 33404
800.772.7932
www.atlasbtw.com

Revisions:		

S03

PM: WY	Address: 2167 Gause Blvd. E
Drawn By: TLD	City State: Slidell, LA
Date: 02.16.2022	Drawing Number: 135577

Non Illuminated Letterset

Action:

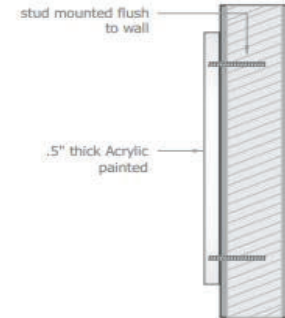
- Patch, paint, and repair fascia as shown.
- Manufacture and install new non illuminated letterset as shown.
- Letterset to be .5" thick Acrylic stud mounted.

Material & Color:

■ Acrylic - Painted to match 3M 3630-235 Autumn Yellow



21'-6 9/16"
STAY IN YOUR CAR
 1'-6"



T5-FCO-S-Y-18
 32.3 Sq Ft

Electrical Notes: All electrical components to be UL approved
 Customer is responsible for one (1) 120v/20a dedicated circuit with
 ground per sign within 6' of sign Lock out switch installed at panel
 box for all electrical signs Install in accordance with N.E.C. article
 600 and/or local codes. This includes proper grounding and
 bonding of signs



Scale 1/2" = 1'



National Headquarters: 1077 West Blue Heron Blvd.
 West Palm Beach, Florida 33404
 800.772.7932
 www.atlasbtw.com

Revisions:	

S02

PM: WY	Address: 2167 Gause Blvd. E
Drawn By: TLD	City State: Slidell, LA
Date: 02.16.2022	Drawing Number: 135577

Illuminated Channel Letters

Action:

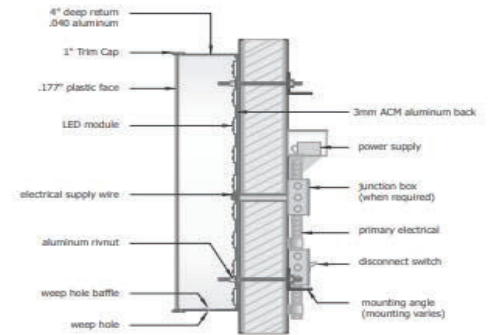
- Remove existing letterset from fascia.
- Patch and Repair wall.
- Manufacture and install new letterset as shown.

Material & Color:

- Vinyl - 3M 3630-235 Autumn Yellow
- Face - White Polycarbonate
- Returns - Pre Finished Black
- Trimcap - 1" Black Jewelite



Remote Wired Cross Section



Electrical Notes: All electrical components to be UL approved Customer is responsible for one (1) 120v/20a dedicated circuit with ground per sign within 6' of sign Lock out switch installed at panel box for all electrical signs Install in accordance with N.E.C. article 600 and/or local codes. This includes proper grounding and bonding of signs



National Headquarters: 1077 West Blue Heron Blvd.
West Palm Beach, Florida 33404
800.772.7932
www.atlasbtw.com

Revisions:	

S01

PM: WY	Address: 2167 Gause Blvd. E
Drawn By: TLD	City State: Slidell, LA
Date: 02.16.2022	Drawing Number: 135577





30091
2167 Gause Blvd. E
Slidell, LA

SO# 135577
Creation Date: 02.16.2022
Last Revised: 03.29.2022



National Headquarters: 1077 West Blue Heron Blvd.
West Palm Beach, Florida 33404
800.772.7932
www.atlasbtw.com