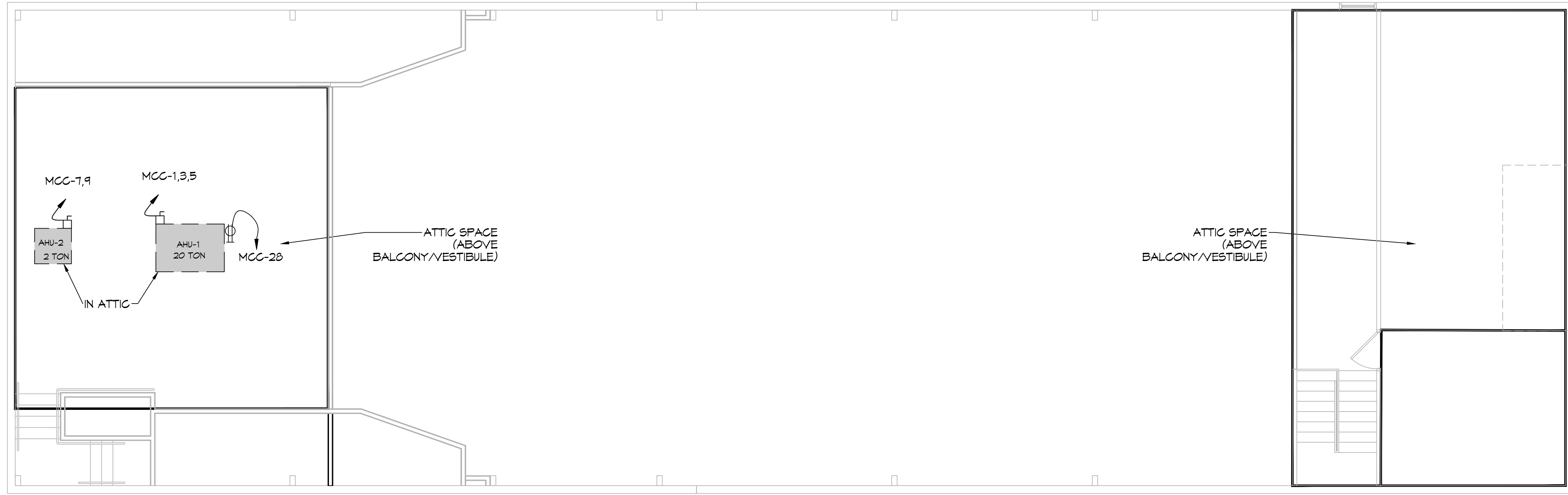


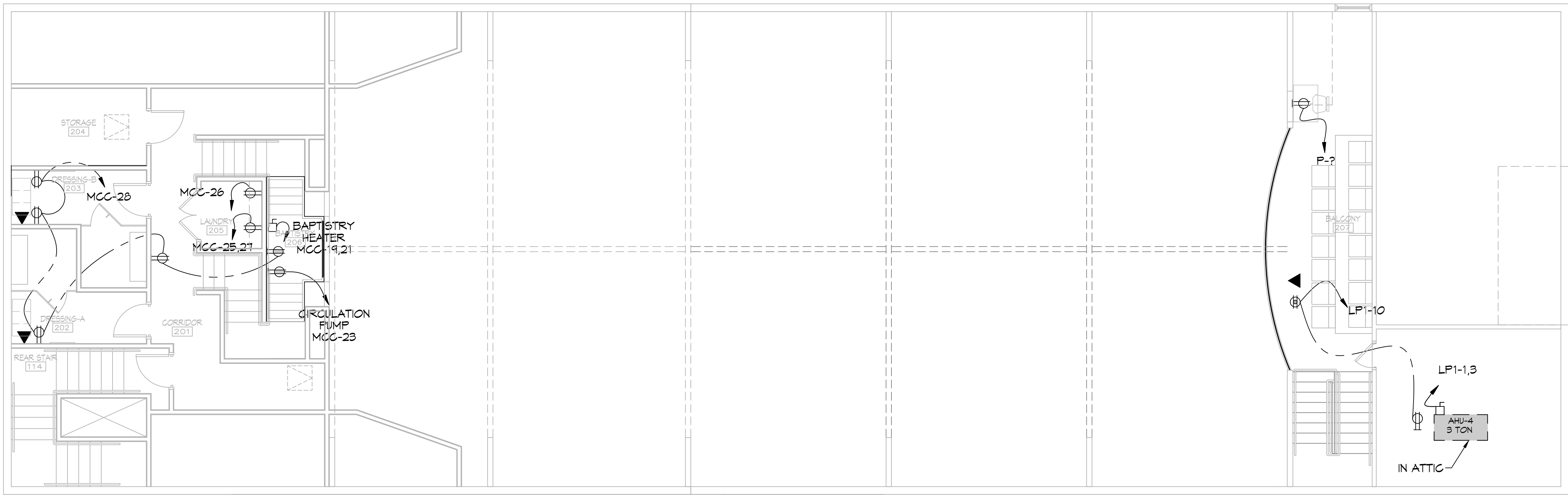
**THE SIXTH BAPTIST CHURCH
 RENOVATION AND ADDITION**
 928 FELICITY STREET
 NEW ORLEANS, LOUISIANA 70130

LEGEND	
	DUPLEX RECEPTACLE - 20A 115V
	GFCI DUPLEX RECEPTACLE - 20A
	WEATHER PROOF GFCI DUPLEX RECEPTACLE - 20A
	FLOOR MOUNTED DUPLEX RECEPTACLE - 20A
	ATTIC DUPLEX RECEPTACLE MOUNTED ABOVE DECK - 20A
	DISCONNECT
	TELEPHONE/DATA RECEPTACLE
	HOME RUN

DRAWN DIAGRAMMATICALLY FOR CLARITY. FIELD VERIFY PLACEMENT OF ALL EQUIPMENT PRIOR TO FABRICATION.



26 POWER PLAN ATTIC
 SCALE: 3/16"=1'-0"



27 POWER PLAN
 SCALE: 3/16"=1'-0"

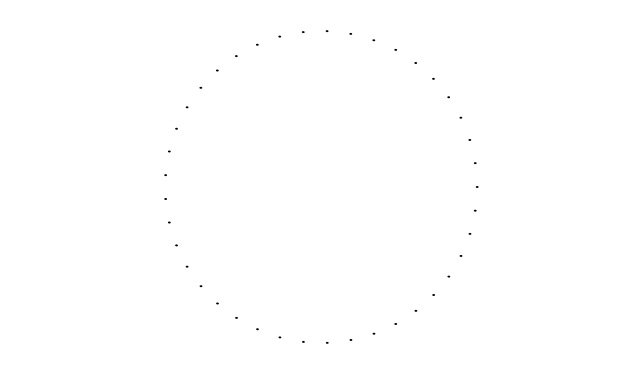
ISSUE	
DATE	FOR
--/--2023	CONSTRUCTION DOC-100%

PROJECT NO: 22201
 DATE: _____
 BY: _____
 CHECKED: _____

PROGRESS PRINT
 NOT FOR CONSTRUCTION

FULL RELEASE
 THIS DRAWING IS FULLY RELEASED BY THE ARCHITECT FOR CONSTRUCTION OF THIS PROJECT ONLY

NOT TO BE COPIED OR REPRODUCED WITHOUT EXPRESSED WRITTEN CONSENT OF HEWITT-WASHINGTON & ASSOCIATES



SHEET TITLE
 POWER PLAN - SECOND FLOOR

SHEET NO.