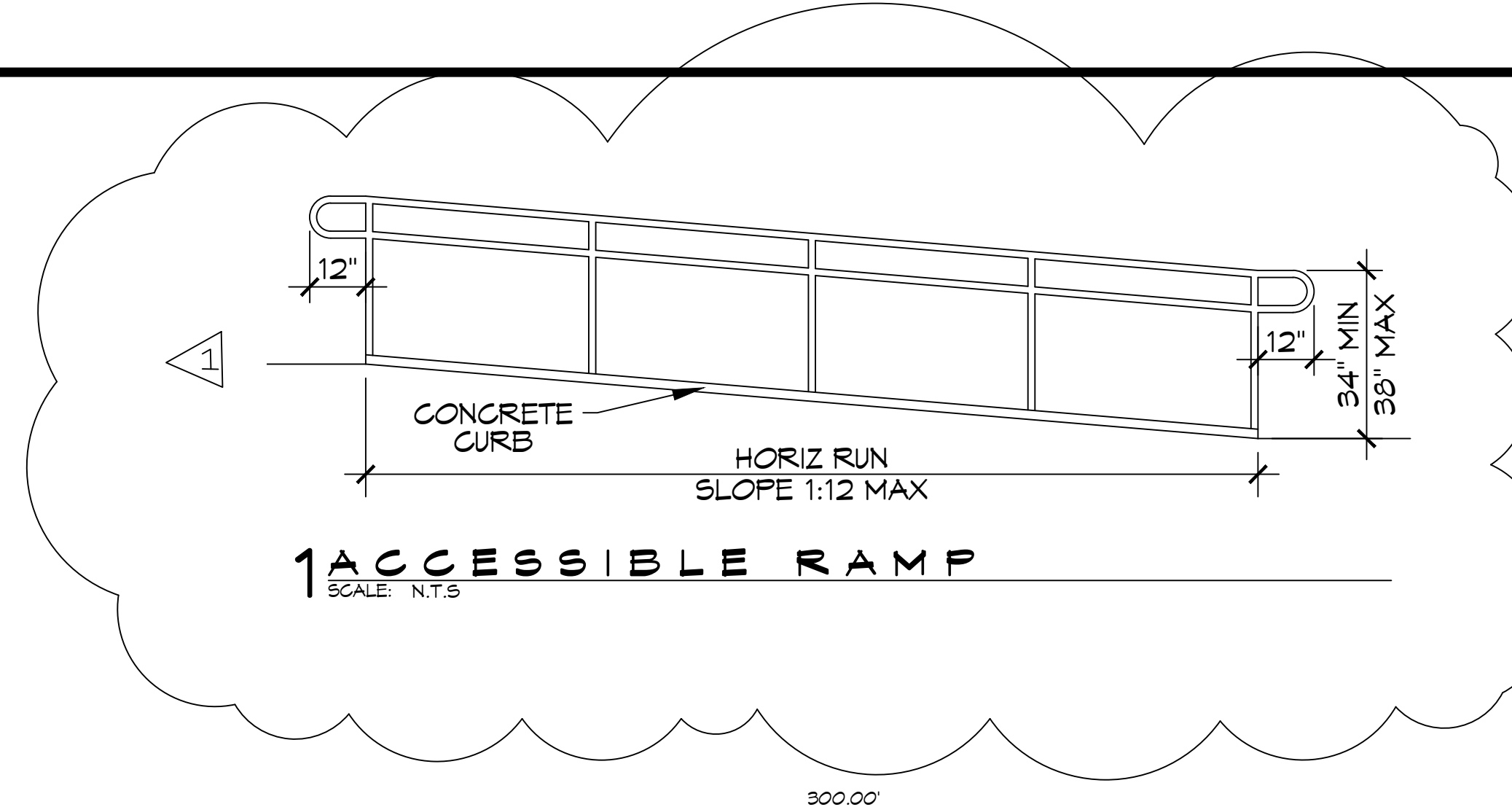


FILE NAME: J:\Projects\Commercial\300\300-Civil\300-Civil.dwg - Site Plan - 02-23-26
 PLOT DATE: 02-23-26
 Monday, February 23, 2026 10:52:00 AM



PARKING REQUIREMENTS

DAY CARE CENTERS REQUIRE MINIMUM OF 5 SPACES PLUS 1 FOR EVERY EMPLOYEE ON DUTY

5 SPACES
 20 EMPLOYEES ON DUTY
 25 PARKING SPACES REQUIRED
 26 REGULAR PARKING SPACES PROVIDED
 2 HANDICAP PARKING SPACES PROVIDED
 TOTAL PARKING SPACES PROVIDED 28

PLANNING

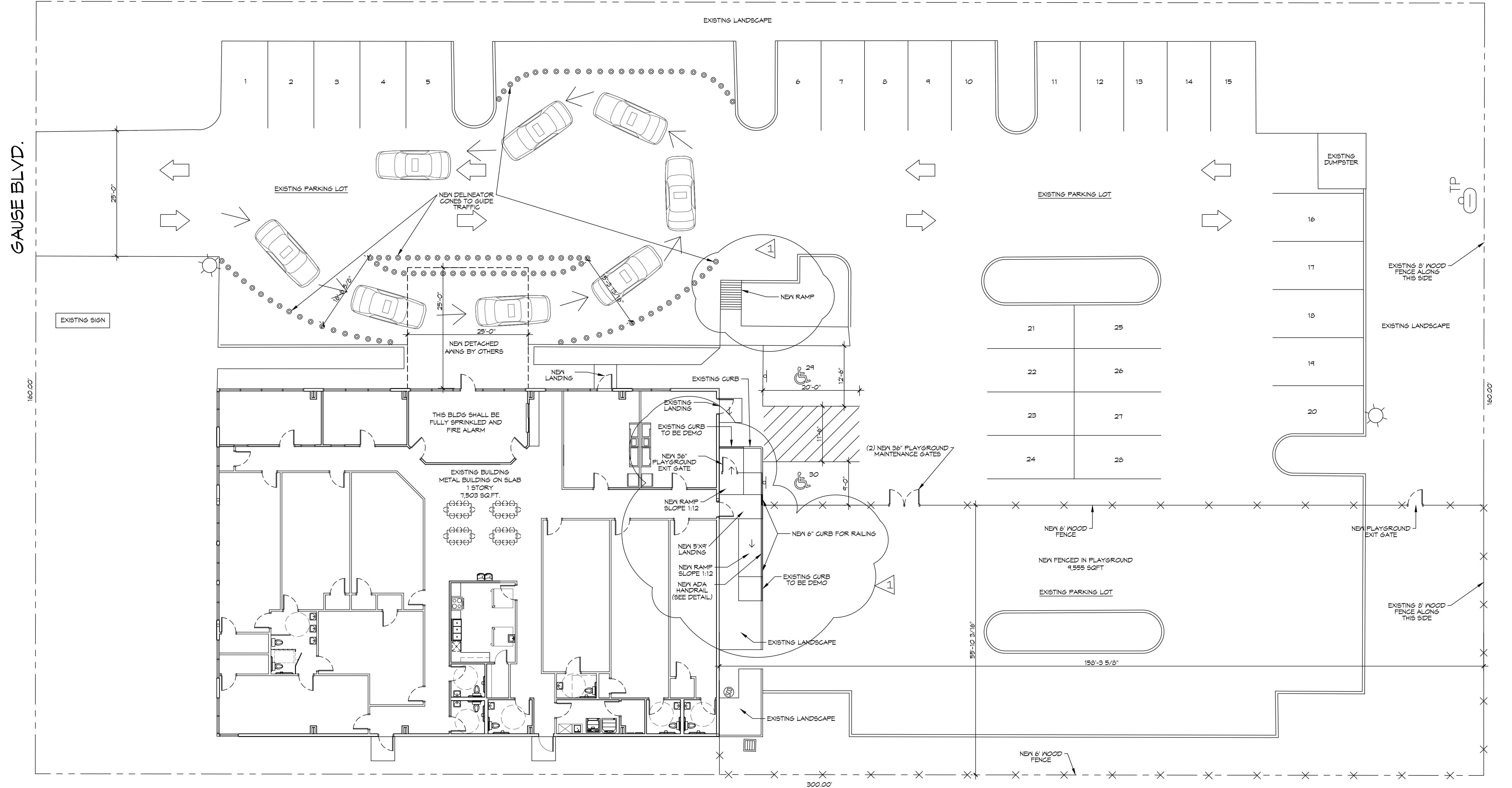
ZONING DISTRICT - HC2 HIGHWAY COMMERCIAL

BUILDING SQUARE FOOTAGE

TOTAL BUILDING 7,503 SQ. F.T

FLOOD ZONE

THIS PROPERTY IS NOT IN SPECIAL FLOOD HAZARD AREA



1 PROPOSED SITE PLAN
SCALE: 1" = 10'-0"

DAMMON ENGINEERING, INC.
LOUISIANA & MISSISSIPPI

Chief Engineer: Brian Watch, PE
 554 Old Spanish Trail
 Slidell, LA 70468
 www.dammonengineering.com
 info@dammonengineering.com
 PH: 985.649.3532

REVISIONS

#	DESCRIPTION	DATE
1	ADA RAMP	02-23-26



NEW DAYCARE
THREE PEAS IN A POD EARLY LEARNING CENTER

2965 GAUSE BLVD
 SLIDELL, LA 70461

JOB No: 2511 DATE: 2-18-2026
 DRAWN BY: LJP CHECKED BY: JWS

SHEET TITLE:
PROPOSED SITE PLAN

DRAWING NUMBER:
C101

SHEET No: 3 of 13