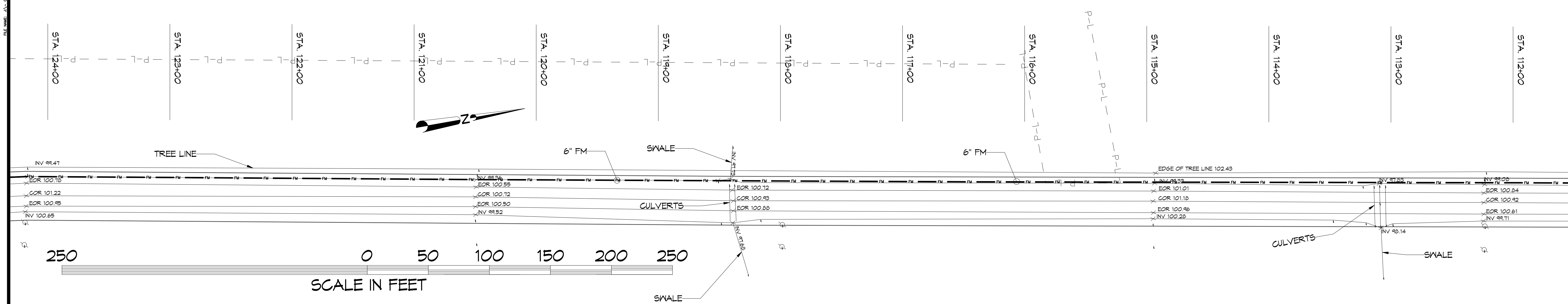


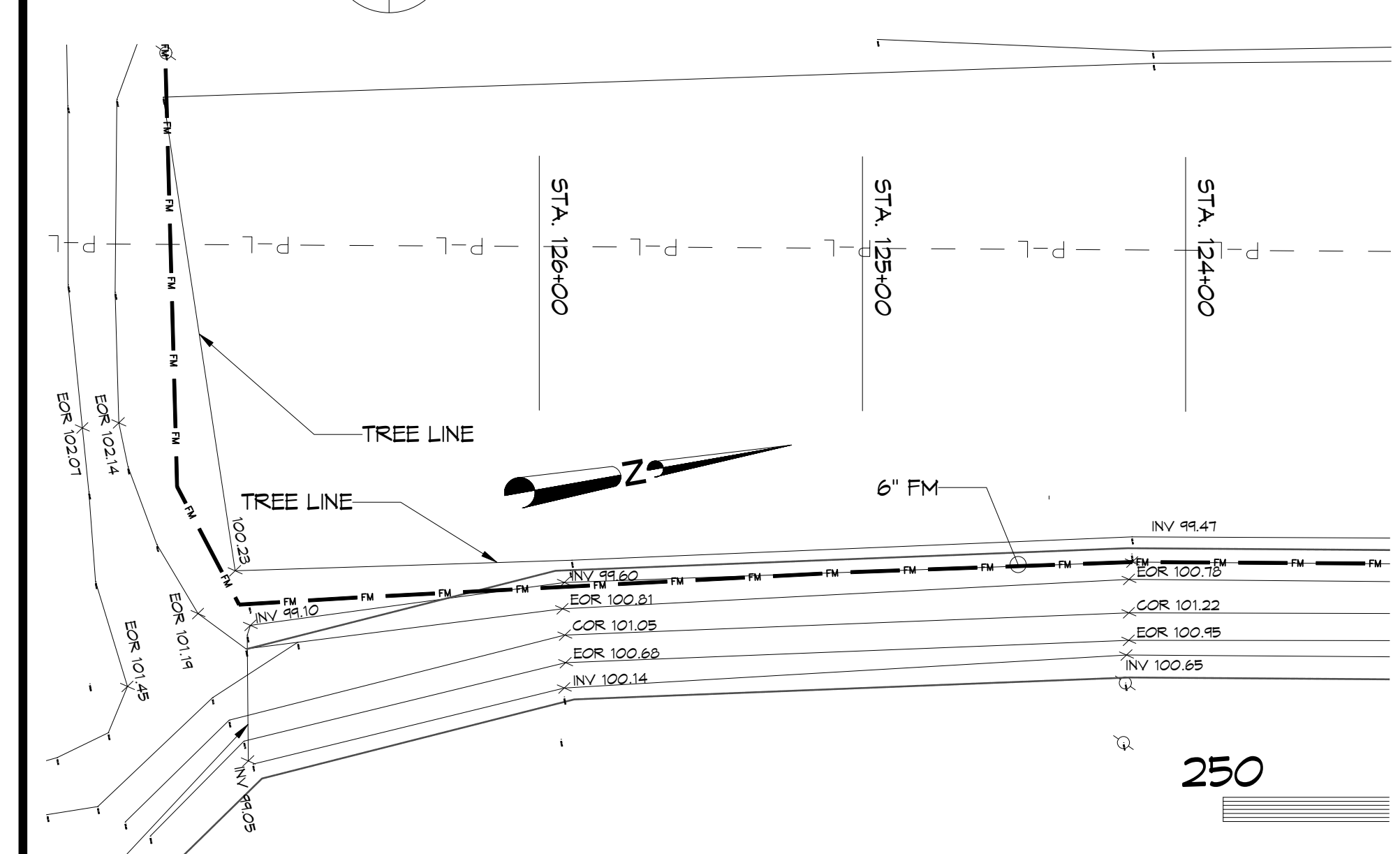
2024 06 26 10:53 AM
 C:\Users\dammon\OneDrive\Documents\Projects\2024\06\26\1053\DWG\12-FORCE MAIN PARTIAL SITE PLAN.dwg
 Plot Date: 6/26/2024 10:53 AM
 Plot Scale: 1" = 40'
 Plot Size: 24" x 36"

- ### ABBREVIATIONS
- CB = CATCH BASIN
 - CMP = CORRUGATED METAL PIPE
 - COR = CENTER OF ROAD
 - EOR = EDGE OF ROAD
 - FM = FORCE MAIN
 - INV = INVERT
 - MH = NEW SANITARY SEWER MANHOLE
 - RCP = ROUND CORRUGATED PIPE
 - RCPA = ROUND CORRUGATED PIPE-ARCH
 - ROW = RIGHT OF WAY
 - SN = SWALE

- ### LEGEND
- 6" FORCE MAIN
 - GRAVITY FED SEWER
 - POWER POLE
 - SANITARY SEWER MANHOLE
 - EXISTING ELEVATION
- | | |
|-----------|-----------|
| STA=0+00' | STATION # |
| EL=101.1' | ELEVATION |



12 FORCE MAIN PARTIAL SITE PLAN
 M101 M101 1" = 40'



13 FORCE MAIN PARTIAL SITE PLAN
 M101 M101 1" = 40'

DAMMON

ENGINEERING, INC.

LOUISIANA & MISSISSIPPI

Chief Engineer: Brian Mastich, PE
 554 Old Spanish Trail
 Slidell, LA 70458
 www.dammonengineering.com
 info@dammonengineering.com
 PH: 985.649.5832

REVISIONS	DATE

SEAL:

NEW FORCEMAIN
TANGIPAHOA PARISH LANDFILL

ANITE CITY, LA
 JOB No: 5-5-2024
 DATE: 6/26/2024
 DRAWN BY: DFD
 CHECKED BY: BMY

SHEET TITLE:
FORCE MAIN HWY 16

DRAWING NUMBER:
M101G

SHEET No: 3 of 7