

LIFE-SAFETY INFORMATION

APPLICABLE CODES
 NFPA 101 LIFE-SAFETY CODE 2015

OCCUPANCY TYPE(S) AND CHAPTER(S)
 BUSINESS (CHAPTER 38)

MULTIPLE, MIXED, OR SEPARATE OCCUPANCY (REFERENCE CHAPTER 6)
 N/A

OCCUPANT LOAD FACTOR (REFERENCE TABLE 7.3.1.2)
 1,950 SF / 100 SF PER OCCUPANT = 21 OCCUPANTS

CLASSIFICATION OF HAZARD OF CONTENTS
 (REFERENCE: OCCUPANCY CHAPTER AND 6.2.2: SPECIFY LOW, ORDINARY, OR HIGH)

CONSTRUCTION TYPE(S) (REFERENCE: CHAPTERS, TABLE A.9.2.1.2 AND COMMENTARY TABLE 9.1 IN HANDBOOK)
 V

MINIMUM EXIT SEPARATION DISTANCE FOR REMOTELY LOCATED EXITS
 (REFERENCE: SECTION 7.5; SPECIFY 1/2 OR 1/3 DIAGONAL DISTANCE OF AREA SERVED)
 1/3 DIAGONAL = 24'-10"

MAXIMUM DEAD-END CORRIDORS (REFERENCE: OCCUPANCY CHAPTER AND TABLE A.7.6)
 50'

MAXIMUM COMMON PATH OF TRAVEL DISTANCE (REFERENCE: OCCUPANCY CHAPTER AND TABLE A.7.6)
 100'

MAXIMUM TRAVEL DISTANCE TO EXITS (REFERENCE: OCCUPANCY CHAPTER AND TABLE A.7.6)
 300'

MAIN ENTRANCE MUST BE SIGNED TO ACCOMMODATE 1/2 OCCUPANT LOAD OF BUILDING

BUILDING CODE INFORMATION

APPLICABLE CODES
 IBC 2021

BUSINESS GROUP B (IBC 2021 CHAPTER 3)

OCCUPANT LOAD CALCULATIONS (TABLE 1004.1.1)
 BUSINESS = 1,950 SQ FT 100 SF PER OCCUPANT (GROSS) 21 OCCUPANTS

CONSTRUCTION TYPE(S) (TABLE 504)
 VB (SECTION 504)

ALLOWABLE HEIGHT AND BUILDING AREA LIMITED BY TYPE OF CONSTRUCTION
 MAXIMUM HEIGHT IN STORIES (SECTION 504.4) 2
 MAXIMUM AREA IN SQUARE FEET (SECTION 503, 506 & 507, TABLE 503) 9,000

WIND SPEED DESIGN REQUIREMENTS

THIS BUILDING SHALL BE DESIGNED WITH IBC SEC 1609 AS A FULLY ENCLOSED BLDG USING THE FOLLOWING INFORMATION:

WIND DESIGN DATA:

DETERMINATION OF WIND LOADS SHALL BE IN ACCORDANCE WITH IBC SEC 1609.3 (1), (2), OR (3) DEPENDING ON THE RISK CATEGORY

WIND SPEED V_{ult} (3 SECOND GUST) = 140 MPH (IBC FIG 1609.3(1))

NOMINAL DESIGN WIND SPEED V_{std} = 110 MPH ($V_{ult} \times (0.6)^{1/2}$)

RISK CATEGORY: CATEGORY II BLDG SURFACE ROUGHNESS = B

TOPOGRAPHIC FACTOR = 1 EXPOSURE = B

DESIGN WIND PRESSURE (ASCE 7-10 TABLE 28.6-1): 31.7 PSF

INTERNAL PRESSURE COEFFICIENT (ASCE 7-10 TABLE 28.11-1): ± 0.18

LIVE LOADS (IBC SEC 1607)

OFFICE LOBBIES & CORRIDORS 1ST FLOOR (IBC TABLE 1607.1): 100 PSF

OFFICES (IBC TABLE 1607.1): 50 PSF

ROOF LIVE LOADS (IBC TABLE 1607.1): 20 PSF UNIFORM, 300 LB CONCENTRATED

SNOW LOADS (IBC SEC 1609):

GROUND SNOW LOAD (IBC FIG 1609.2): 5 PSF

FLOOD ZONE INFORMATION

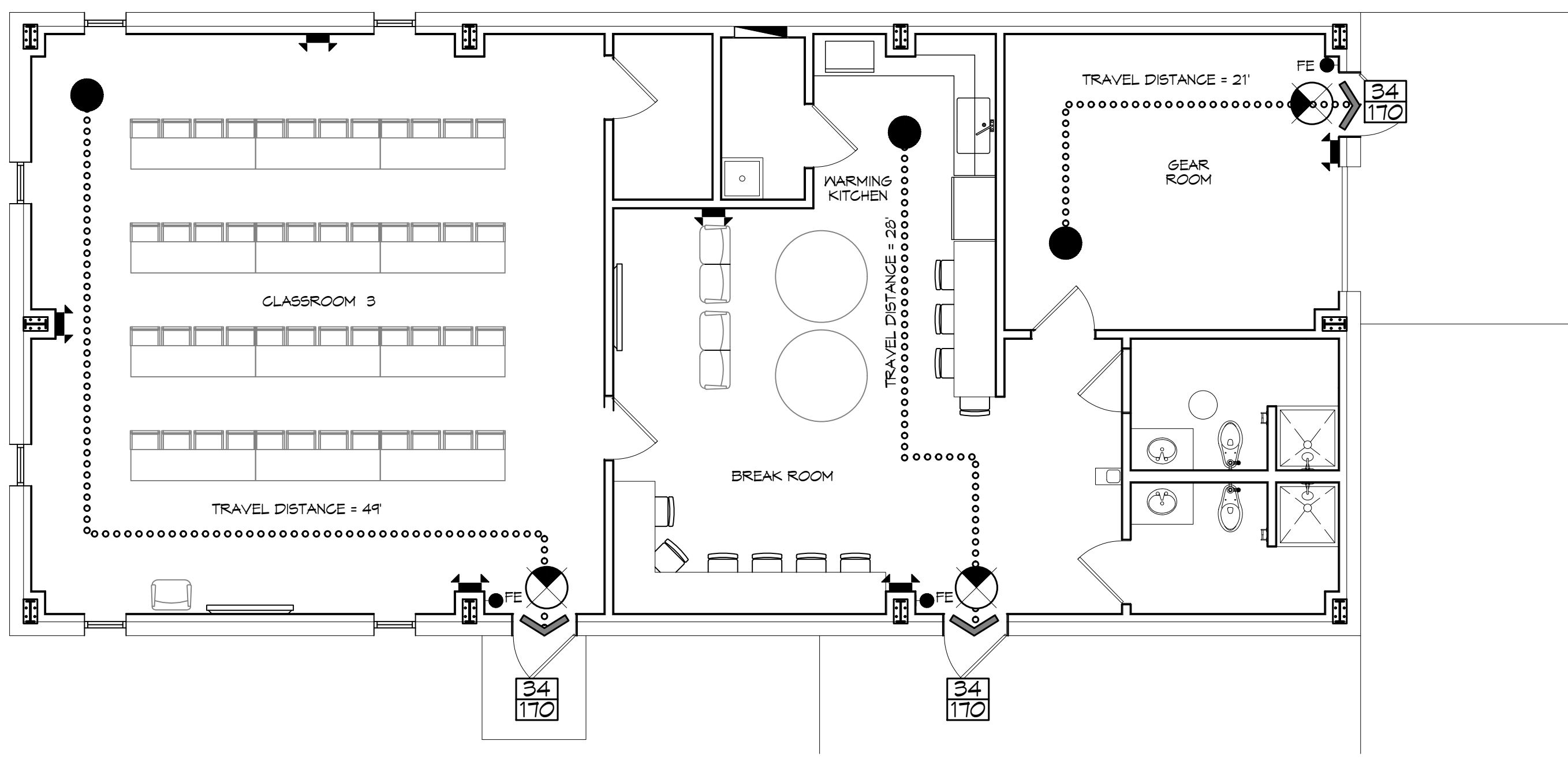
BASED ON THE SURVEY OF THIS PROPERTY BY J.V. BURKES, THIS PROPERTY IS NOT IN SPECIAL FLOOD HAZARD AREA

FIRM, COMMUNITY NO. 22520500415 C DATED 4-02-1991

FLOOD ZONE: C BASE FLOOD ELEVATION: N/A

LIFE-SAFETY LEGEND

| SYMBOL | DESCRIPTION |
|------------|---------------------------------------|
| > | EXITS |
| 45 | DOOR FIRE RATING (MINUTES) |
| 50/110 | DOOR WIDTH/EGRESS CAPACITY |
| ⊙ | EXIT LIGHT |
| • FE | FIRE EXTINGUISHER IV WALL MTD BRACKET |
| ————— | COMMON PATH OF TRAVEL |
| •••••••••• | TRAVEL DISTANCE |
| ● | DECISION POINT |



LIFE-SAFETY PLAN
 SCALE: 3/16" = 1'-0"

VICINITY MAP



SHEET INDEX

| SHEET # | SHEET TITLE |
|---------|--|
| G101 | GENERAL INFORMATION SHEET |
| G102 | ACCESSIBILITY INFORMATION |
| C101 | SITE PLAN |
| C102 | DRAINAGE AND UTILITY SITE PLAN |
| C103 | PAVING & FILL PLAN |
| C104 | EROSION CONTROL AND DETAILS |
| S101 | FOUNDATION PLAN |
| A101 | FLOOR PLAN |
| A102 | EXTERIOR ELEVATIONS |
| A103 | ROOF PLAN AND BLDG SECTION |
| A104 | REFLECTED CEILING PLAN |
| P101 | PLUMBING PLAN |
| M101 | MECHANICAL FLOOR PLAN, SCHEDULES & DETAILS |
| E101 | POWER PLAN |
| E102 | LIGHTING PLAN |

GENERAL NOTES

- ALL MATERIALS AND WORK, INCIDENTAL TO THE CONSTRUCTION OF THIS PROJECT, SHALL CONFORM TO ALL GOVERNING CODES, AND REGULATIONS OF AGENCIES IN AUTHORITY.
- CONTRACTOR SHALL PROVIDE ALL PUBLIC PROTECTIONS NECESSARY AS REQUIRED BY LAW.
- THE DRAWINGS AND ANY SUBSEQUENTLY ISSUED ADDENDA, AMENDMENTS OR SUCH CHANGE ORDERS APPROVED BY THE OWNER AND THE CONTRACTOR ARE PART OF THESE CONTRACT DOCUMENTS.
- DO NOT SCALE DRAWINGS. CONSULT WITH THE ENGINEER REGARDING ANY ITEMS IN THE CONTRACT DOCUMENTS THAT REQUIRE CLARIFICATION.
- TRASH SHALL BE REMOVED FROM THE SITE NOT LESS THAN TWICE MONTHLY.
- THE GENERAL CONTRACTOR SHALL VERIFY EXISTING CONDITIONS PRIOR TO COMMENCING WORK AND REPORT ANY AND ALL DISCREPANCIES TO THE ARCHITECT.
- CONTRACTOR VEHICLES AND EQUIPMENT NECESSARY FOR CONSTRUCTION MAY BE PARKED ON THE SITE. OTHER VEHICLES PARKED ON THE SITE REQUIRE THE OWNER'S PERMISSION.
- ALL MATERIALS/EQUIPMENT SHALL BE INSTALLED PER MANUFACTURER'S RECOMMENDATIONS. WORK NOT CONSISTENT WITH MANUFACTURER'S RECOMMENDATIONS WILL BE REJECTED BY OWNER/ARCHITECT.

DAMMON ENGINEERING, INC.
 LOUISIANA & MISSISSIPPI

Chief Engineer: Brian Alstich, PE
 554 Old Spanish Trail
 Slidell, LA 70458
 www.dammonengineering.com
 info@dammonengineering.com
 PH: 985.649.5832

| # | DESCRIPTION | DATE |
|---|-------------|------|
| | | |
| | | |
| | | |



NEW TRAINING FACILITY
ST. TAMMANY FIRE PROTECTION DISTRICT NO. 1

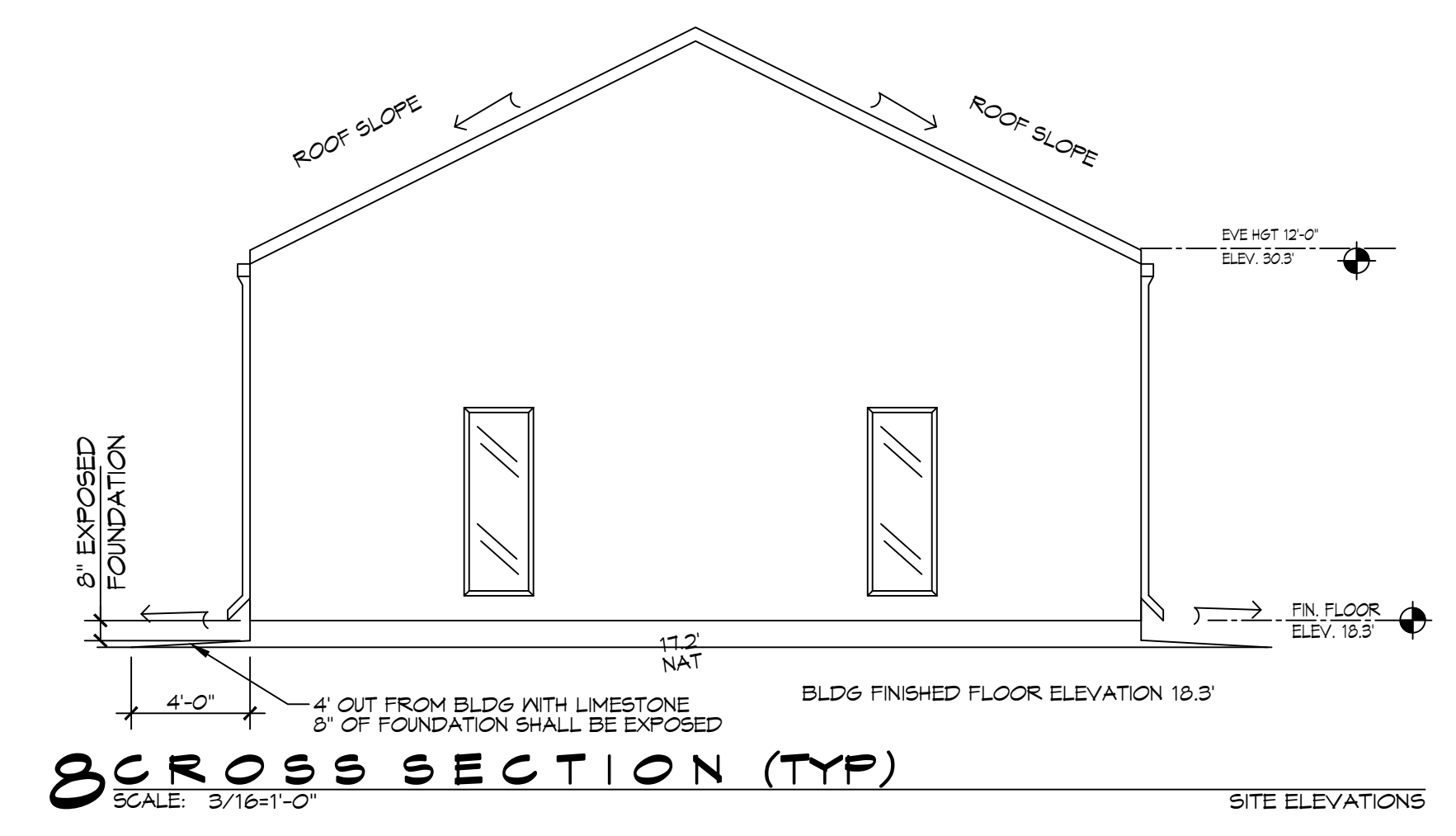
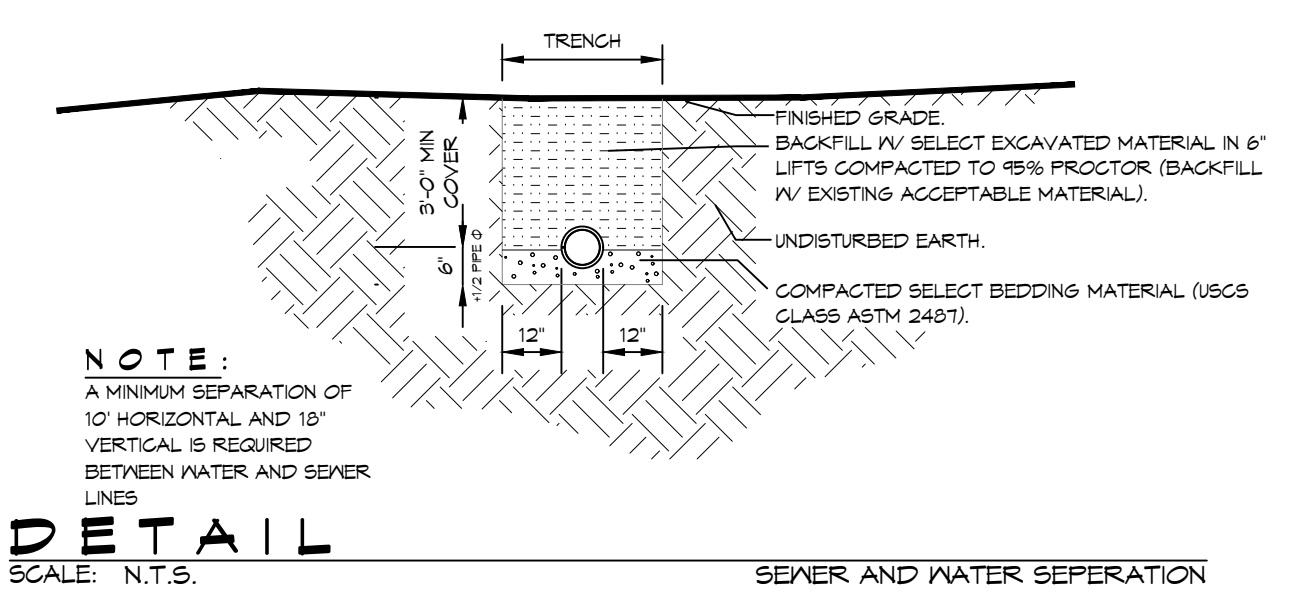
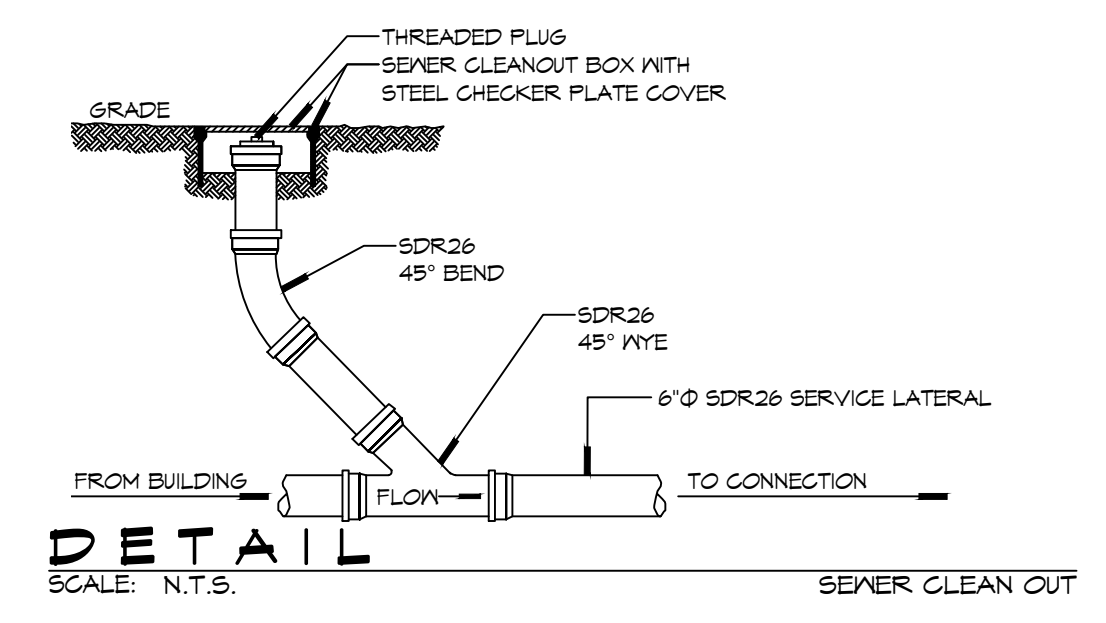
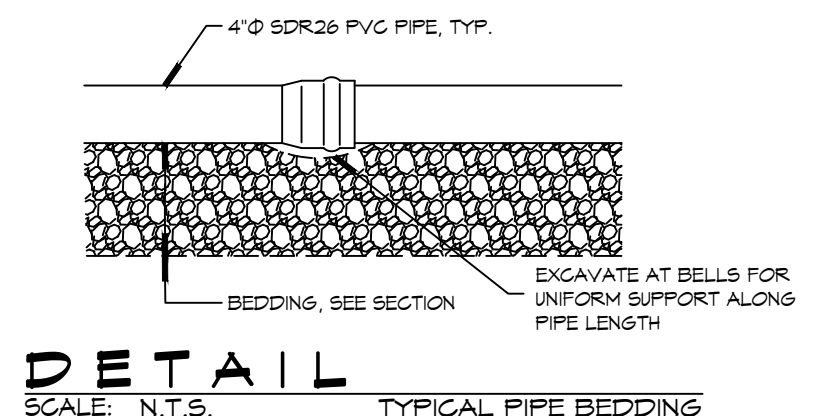
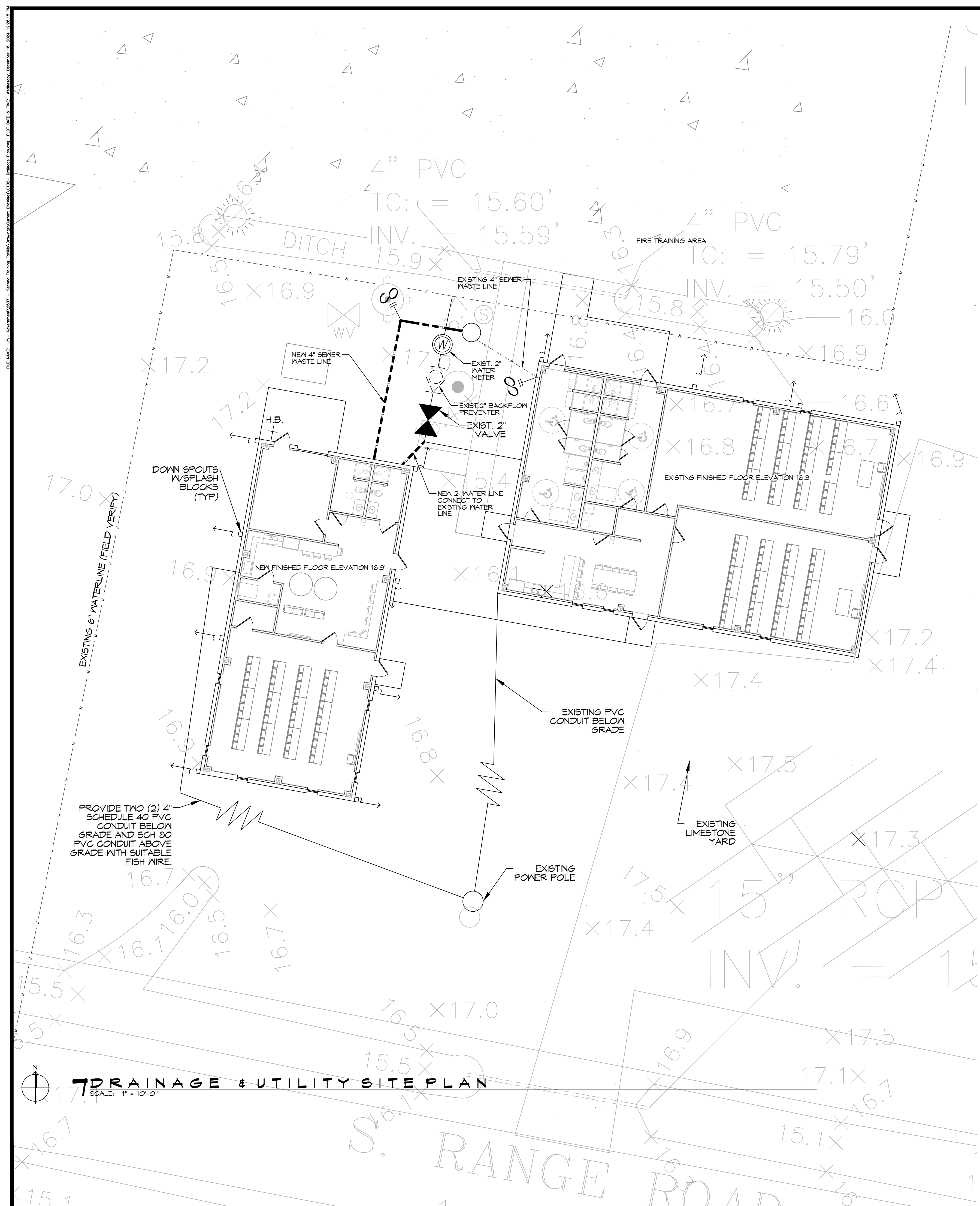
34750 S RANGE ROAD
 SLIDELL, LA 70460

JOB NO.: 2807 DATE: 12-19-2024
 DRAWN BY: CKD CHECKED BY: JMS

SHEET TITLE:
GENERAL INFORMATION SHEET

DRAWING NUMBER:
G101

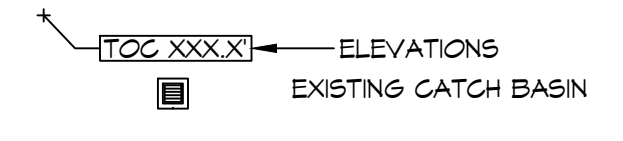
SHEET No: 1 of 15



DRAINAGE NOTES

- CONTRACTOR SHALL PROVIDE ALL LABOR, MATERIAL, TRANSPORTATION, SUPERVISION, CLEAN-UP, SERVICES, AND EQUIPMENT FOR A COMPLETE OPERATING SYSTEM.
- PROVIDE POSITIVE DRAINAGE AWAY FROM BLDG AND SHALL SLOPE TOWARDS EXISTING DITCHES AND CULVERTS.

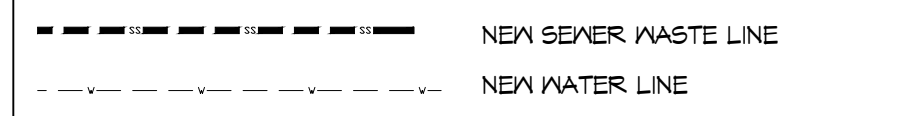
DRAINAGE LEGEND



GENERAL SITE NOTES

- PROVIDE ALL LABOR, MATERIAL AND EQUIPMENT FOR A COMPLETE OPERATING SYSTEM. CONTRACTOR IS TO FIELD VERIFY ALL EXISTING UTILITY LOCATIONS, ELEVATIONS, AND INVERTS PRIOR TO COMMENCING ANY WORK. CONTRACTOR SHALL PAY NECESSARY FEES FOR THE UTILITIES CONNECTIONS.
- CONTRACTOR TO BE RESPONSIBLE TO VERIFY ANY INVERTS AND SET NEW INVERTS OF SEWAGE AND DRAINAGE PIPES.
- ALL WORK AND MATERIAL TO COMPLY STRICTLY TO THE LATEST LOCAL CITY PARISH, STATE, AND NATIONAL GOVERNING CODES.
- SEWAGE LINES 3\"/>

SITE UTILITIES LEGEND



NOTE:
ALL PLUMBING IS DRAWN
DIAGRAMMATICALLY FOR
CLARITY

DAMMON ENGINEERING, INC.
LOUISIANA & MISSISSIPPI
www.dammonengineering.com
info@dammonengineering.com
Chief Engineer: Brian Mistich, PE
554 Old Spanish Trail
Slidell, LA 70468
PH: 985.649.9532

| # | DESCRIPTION | DATE |
|---|-------------|------|
| | | |
| | | |
| | | |
| | | |

SEAL:
STATE OF LOUISIANA
BRIAN A. MISTICH
License No. 30187
PROFESSIONAL ENGINEER

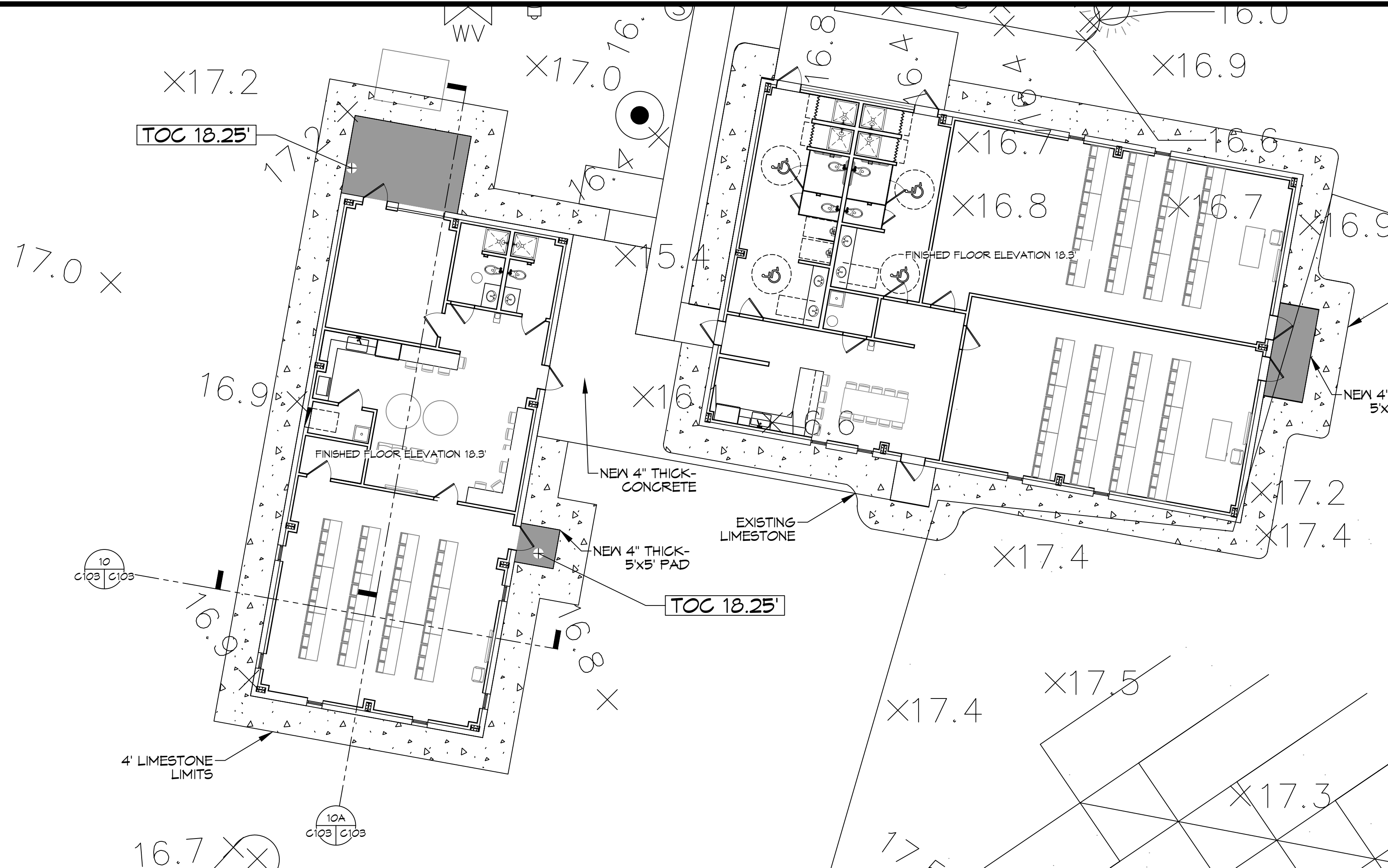
NEW TRAINING FACILITY
ST. TAMMANY FIRE PROTECTION DISTRICT NO. 1
34180 S RANGE ROAD
SLIDELL, LA 70460
JOB No: 25071 DATE: 12-18-2024
DRAWN BY: BAW
CHECKED BY: C&D

SHEET TITLE:
DRAINAGE & UTILITY SITE PLAN

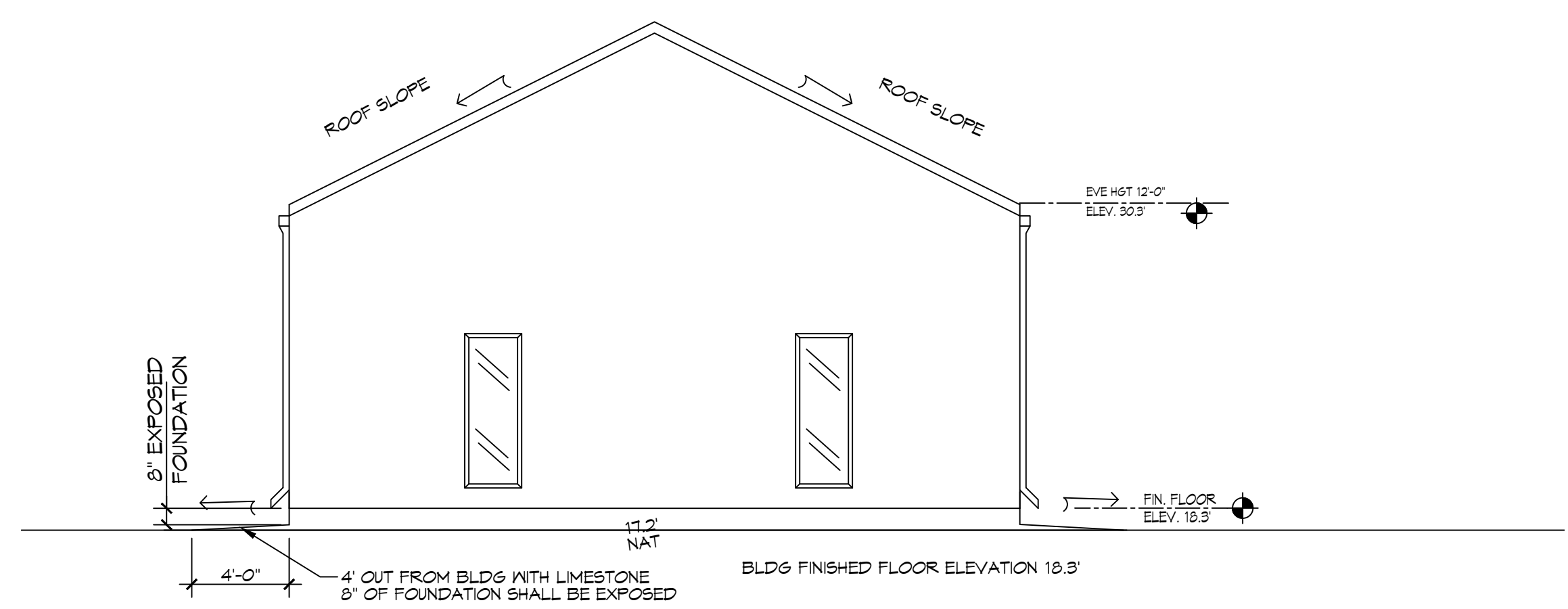
DRAWING NUMBER:
C102
SHEET No: 4 of 15

DRAINAGE & UTILITY SITE PLAN
SCALE: 1" = 10'-0"

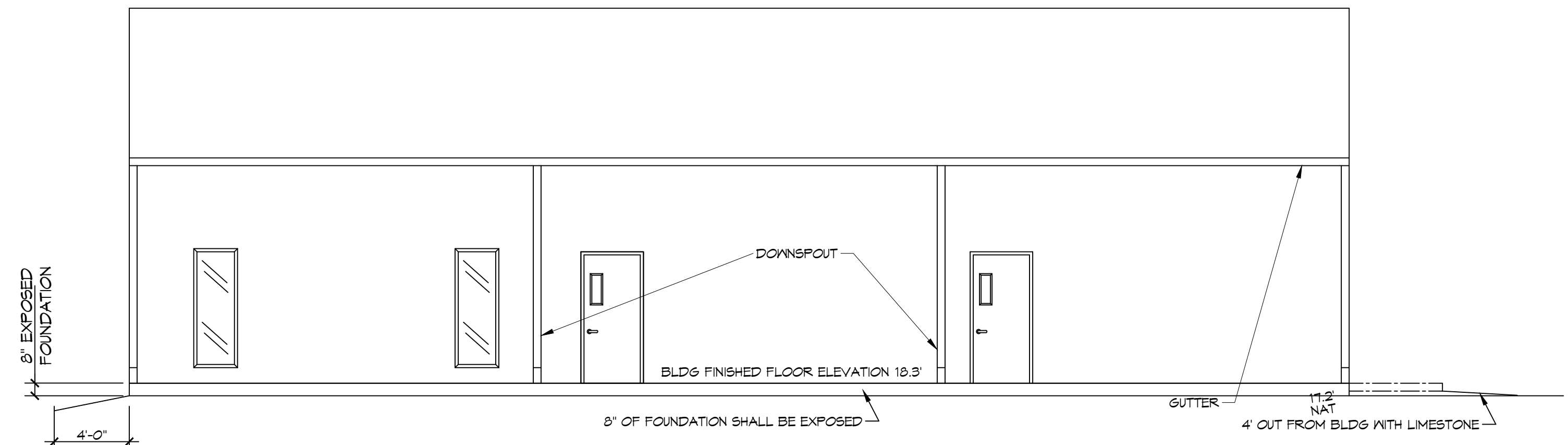
FILE NAME: \\... \DAMMON\2024 - Special Services Facility\General\Drawings\C103 - 01 - PAVING & FILL PLAN.dwg DATE: 12/18/2024 10:52:24 AM



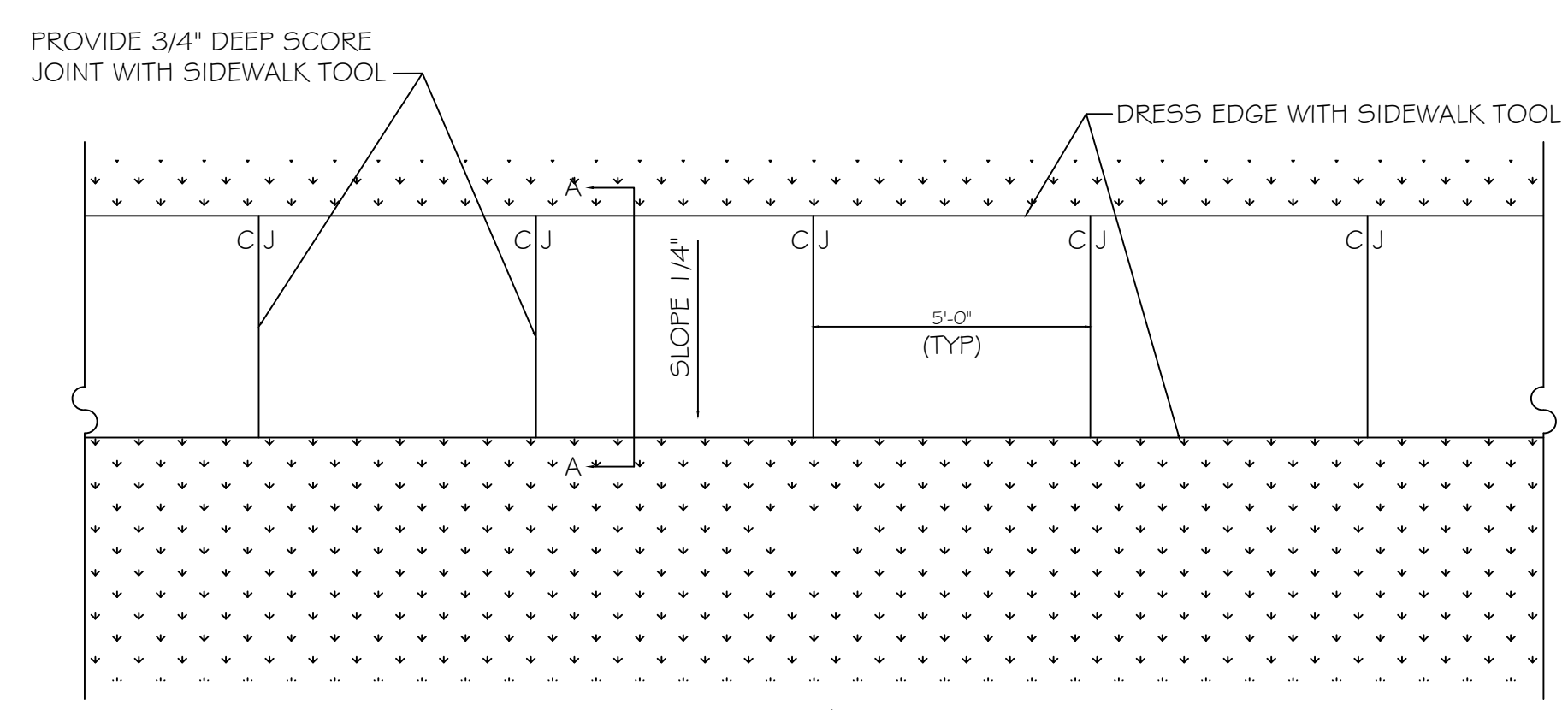
PAVING & FILL PLAN
SCALE: 1" = 10'-0"



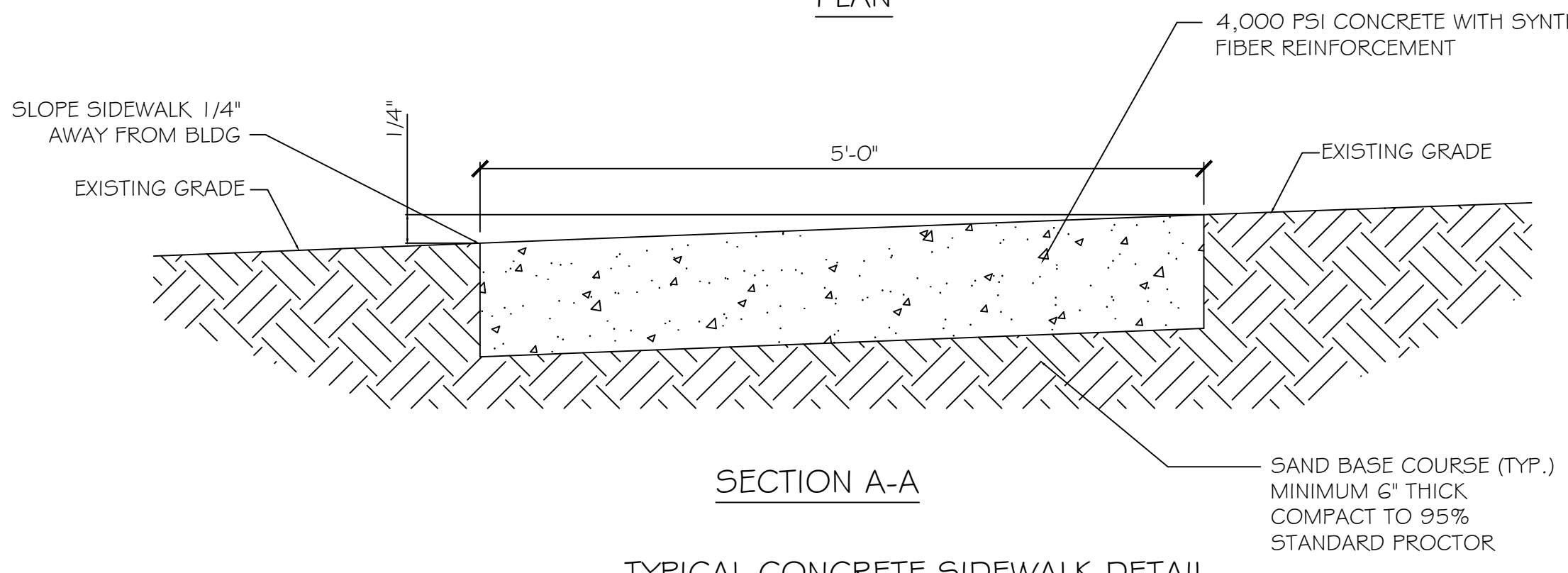
10 CROSS SECTION
SCALE: 3/16" = 1'-0"



10A CROSS SECTION
SCALE: 3/16" = 1'-0"



PLAN

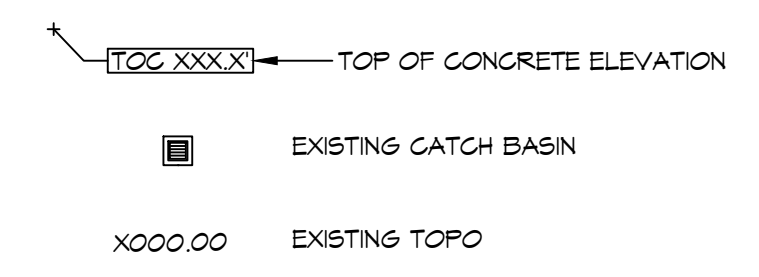


SECTION A-A
TYPICAL CONCRETE SIDEWALK DETAIL
N.T.S.

GENERAL SIDEWALK NOTES

SIDEWALKS = 4" THICKNESS (INDICATED WITH CROSS
 MIX FOR ONE CUBIC YARD OF FIBER-REINFORCED CONCRETE:
 28 DAY STRENGTH 4000 PSI
 CEMENT (ASTM C-150, TYPE I/II) 4.64 SACKS (436 LBS.)
 FLY ASH (ASTM C-618) 1.16 SACKS (109 LBS.)
 GRAVEL (ASTM C-33, GRADE A) 1775 LBS.
 SAND (ASTM C-33) 1226 LBS.
 WATER (POTABLE) 30 GALLONS (250 LBS.)
 TYPE A WATER REDUCER (ASTM C-494) 16.35 LBS.
 AIR ENTRAINMENT 5% BY VOLUME, USE PER
 MANUFACTURER'S SPECIFICATIONS
 FIBER REINFORCEMENT 1.5 LBS./CY MICROFIBERS, AS
 SPECIFIED BELOW
 FIBER REINFORCEMENT FOR CONCRETE SIDEWALKS SHALL BE MATRIX
 MONOFILAMENT MICROFIBER AS MANUFACTURED BY FRG INDUSTRIES OR
 APPROVED EQUAL, APPLIED THROUGHOUT THE CONCRETE
 MIXTURE. ALTERNATE PRODUCTS MUST BE PREAPPROVED BY THE ENGINEER
 IN WRITING. CELLULOSE (TREATED OR UNTREATED), AR GLASS, NYLON AND
 POLYESTER FIBERS ARE SPECIFICALLY PROHIBITED FROM USE.
 CONTRACTOR SHALL FURNISH ALL MATERIALS, LABOR, AND EQUIPMENT
 NEEDED TO CONSTRUCT WALKWAYS AND PADS.

PAVING LEGEND



DAMMON ENGINEERING, INC.
 LOUISIANA & MISSISSIPPI
 Chief Engineer: Brian Mistich, PE
 554 Old Spanish Trail
 Slidell, LA 70458
 www.dammonengineering.com
 info@dammonengineering.com
 PH: 985.649.5832

| # | DESCRIPTION | DATE |
|---|-------------|------|
| | | |
| | | |
| | | |
| | | |

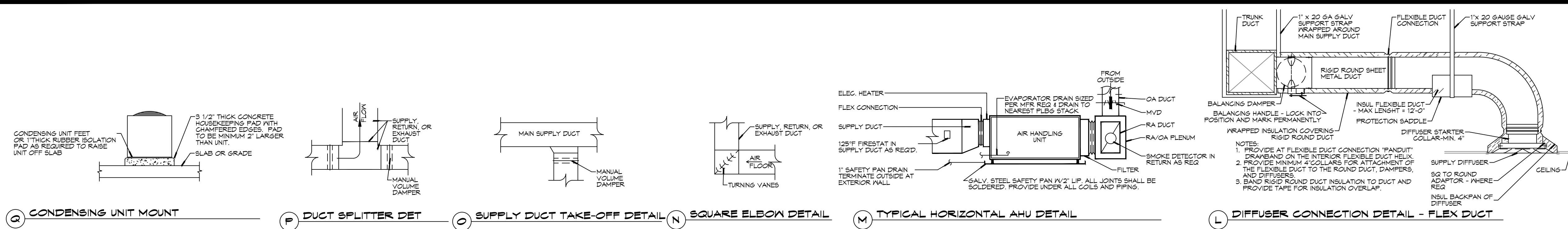


NEW TRAINING FACILITY
ST. TAMMANY FIRE PROTECTION DISTRICT NO. 1
 94180 S RANGE ROAD
 SLIDELL, LA 70460
 JOB No: 25071 DATE: 12-18-2024
 DRAWN BY: BAW
 C&D CHECKED BY:

SHEET TITLE:
 PAVING & FILL PLAN
 DRAWING NUMBER:
C103
 SHEET No: 5 of 15

FILE NAME: J:\Projects\2024\24-0000\24-0000-001 - General\24-0000-001-001.dwg
 PLOT DATE: 11/22/2024
 PLOT TIME: 10:58:48 AM
 PLOT BY: BAK

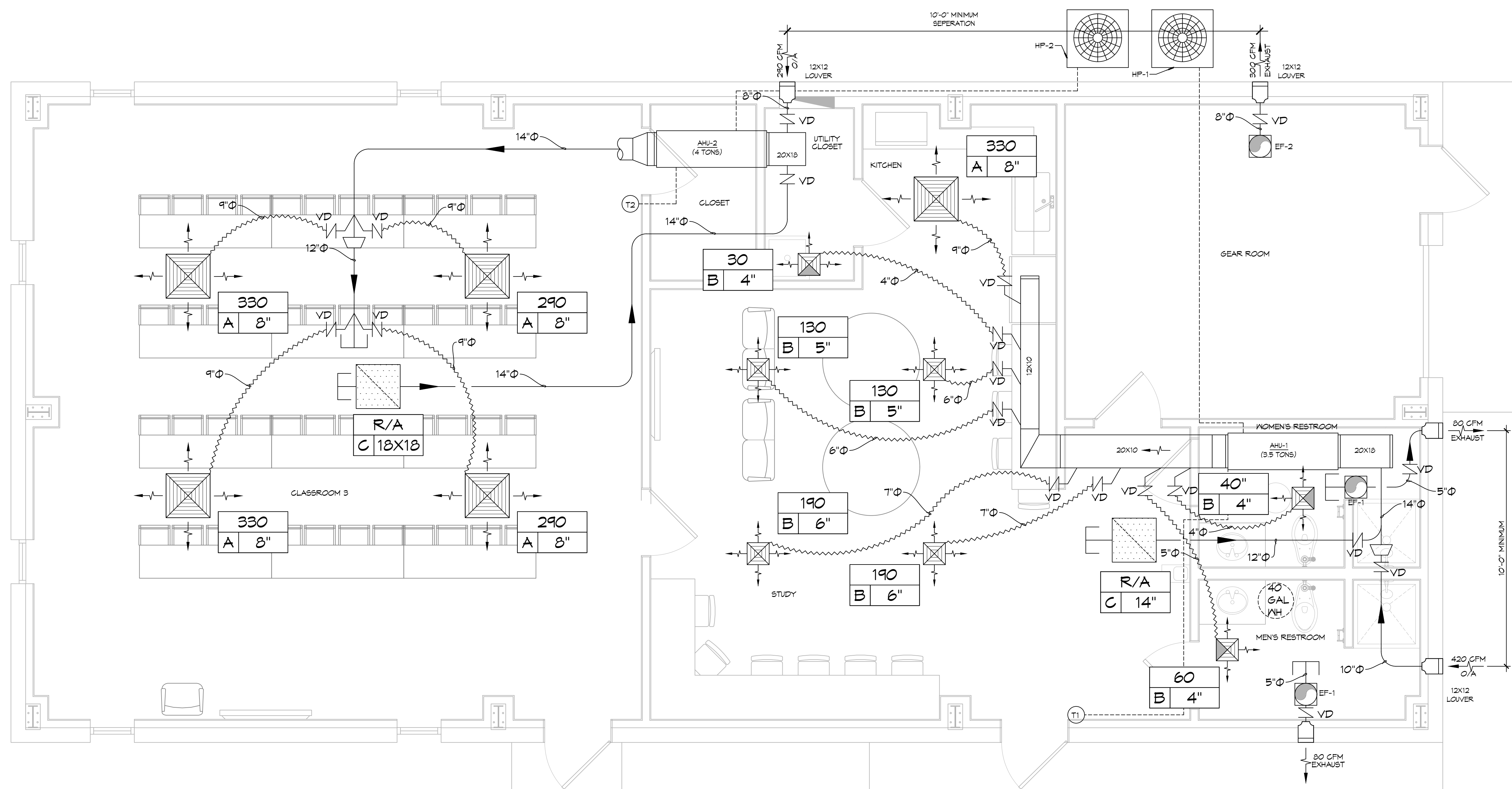
25 DETAILS
SCALE: N.T.S.



- ### GENERAL HVAC NOTES
- CONCEALED DUCTWORK TO BE GALVANIZED SHEET METAL WRAPPED WITH FIBROUS GLASS DUCT WRAP WITH FSK VAPOR BARRIER, MIN R-6. INSTALLED PER SMACNA STANDARDS. DUCT WORK IMMEDIATELY DOWNSTREAM FROM AHU SHALL BE LINED FOR SOUND ATTENUATION.
 - EXPOSED DUCTWORK TO BE GALVANIZED SHEET METAL LINED WITH FIBROUS GLASS DUCT LINER, MIN R-6. INSTALLED PER SMACNA STANDARDS.
 - ROUND FLEXIBLE DUCT TO BE UL-181, CLASS 1, AIR DUCT MATERIALS.
 - DUCT SIZES SHOWN ARE CLEAR INSIDE DIMENSIONS.
 - IN ALL SYSTEMS OVER 2000 CFM AND LESS THAN 15,000 CFM, SMOKE DETECTORS SHALL BE INSTALLED IN ACCORDANCE WITH NFPA 72E IN THE RETURN DUCT DOWNSTREAM OF THE AIR HANDLING UNIT AND ALL FILTERS TO AUTOMATICALLY STOP THE FAN.
 - PROVIDE UL LISTED 125°F FIRESTAT IN RETURN AIR OF EACH SYSTEM UNDER 2000 CFM TO SHUT DOWN THE FAN IN THE EVENT OF FIRE.
 - PROVIDE UL RATED FIRE DAMPERS WHERE REQUIRED AT ALL DUCT PENETRATIONS OF FIRE-RATED ASSEMBLIES AND WHERE REQUIRED BY CODE, INCLUDING OUTSIDE AIR INTAKES AND EXHAUST FANS.
 - CONDENSATE DRAINS TO BE PVC PIPE RUN TO PLUMBERS P-TRAP WITHIN FIVE FEET OF AIR HANDLING UNITS.
 - ALL AIR HANDLING SYSTEMS TO BE BALANCED TO ASSURE PROPER AIR FLOWS PER PLANS.
 - ALL THERMOSTATS TO BE AUTOMATIC CHANGEOVER WITH HEAT SWITCH.
 - EXHAUST FAN SHALL BE CONTROLLED BY A SWITCH ON THE WALL IN THE SAME LOCATION AS LIGHT SWITCH(S). PROVIDE BACK DRAFT DAMPER.
 - PROVIDE AND INSTALL WATER PROOF GRILLE VENT IN PROPER ROOF LOCATION FOR PLUMBING FIXTURE EXHAUST.
 - ALL SUPPLY AIR VENTS SHALL BE EQUIPPED WITH AIR CONTROL DAMPERS AT THE REGISTER.
 - LOCATE OUTDOOR UNITS AS SHOWN ON ARCHITECTURAL DRAWINGS.
 - REFRIGERANT LINES SHALL BE SIZED BY UNIT MANUFACTURER AND INSTALLED ACCORDING TO MANUFACTURER'S INSTRUCTIONS.
 - FRESH AIR SHALL BE SUPPLIED TO EACH AIR HANDLER THROUGH EXTERIOR WALL DUCT SUPPLIED WITH A CONTROL DAMPER.
 - ALL ELECTRICAL, MECHANICAL, AND PLUMBING PENETRATING FIRE WALLS SHALL BE FIRE CAULKED. PENETRATIONS THROUGH RATED CONSTRUCTION SHALL BE SEALED WITH A MATERIAL CAPABLE OF PREVENTING THE PASSAGE OF FLAMES AND HOT GASES WHEN TESTED IN ACCORDANCE WITH ASTM-E8-14).
 - ALL MECHANICAL SYMBOLS ARE DRAWN DIAGRAMMATICALLY. CONTRACTOR TO VERIFY WITH OWNER LOCATIONS OF VENTS, DAMPERS, REGISTERS, ETC.
 - FLEXIBLE DUCTWORK LENGTH NOT TO EXCEED 12'-0".
 - REFER TO REFLECTED CEILING PLAN FOR FINAL GRILLE AND DIFFUSER LOCATIONS AND COORDINATE AS REQUIRED.
 - FINAL LOCATION OF TEMPERATURE CONTROLS TO BE COORDINATED WITH OWNER AT JOB SITE.
 - PROVIDE AND INSTALL SMOKE DETECTORS AS APPROVED BY LOCAL AHJ. PLACE NEAR R/A AND S/A OPENINGS OF AHU AND PROVIDE WITH ACCESS PANEL, WIRING BY ELECTRICAL CONTRACTOR.
 - FRESH AIR INTAKES ARE REQUIRED TO HAVE MOTORIZED OR GRAVITY DAMPERS TO SHUT OFF WHEN SYSTEM IS NOT RUNNING.
 - PROVIDE BIRD SCREENS AT ALL EXTERIOR MECHANICAL PENETRATIONS.
 - COORDINATE WALL MOUNTED THERMOSTAT LOCATIONS WITH ALL OWNER FURNISHED ITEMS EITHER WALL MOUNTED OR FLOOR MOUNTED AGAINST PARTITIONS. REFER TO ARCHITECTURAL DRAWINGS.
 - PROVIDE MIN 18 GA GALVANIZED SHEET METAL TO BLANK-OFF GABLE VENTS WHERE INTAKE/EXHAUST DUCTS OCCUR.

DAMMON ENGINEERING, INC.
 LOUISIANA & MISSISSIPPI
 Chief Engineer: Brian M. Misch, PE
 554 Old Spanish Trail
 Slidell, LA 70688
 www.dammonengineering.com
 info@dammonengineering.com
 PH: 985.649.5832

| # | DESCRIPTION | DATE |
|---|-------------|------|
| | | |
| | | |
| | | |
| | | |



26 MECHANICAL FLOOR PLAN
SCALE: 3/8" = 1'-0"

| SPLIT SYSTEM SCHEDULE | | | | | | | | | | | | | | | | | | | | |
|-----------------------|-------|-----------|--------------|-----------|-------------|----------|------------|-----|-----------|----|-----------|-----------------|------|-------|----------|-------|-----|----|-----|-----------------|
| TAG | MAKE | MODEL | NOMINAL TONS | TOTAL CFM | AIR HANDLER | | | | AUX. HEAT | | HEAT PUMP | | | | REMARKS | | | | | |
| | | | | | OA CFM | Motor HP | ESP (" WC) | KW | VAC | PH | MCA | MAX FUSE (AMPS) | TAG | MAKE | | MODEL | VAC | PH | MCA | MAX FUSE (AMPS) |
| AHU-1 | Trane | GAN5B0C42 | 3-1/2 | 1100 | 420 | 1/2 | 0.5 | 2.9 | 208 | 1 | 22 | 25 | HP-1 | Trane | 4TWR6042 | 208 | 1 | 26 | 45 | 1, 2, 3 |
| AHU-2 | Trane | GAN5B0C48 | 4 | 1240 | 290 | 3/4 | 0.4 | 2.9 | 208 | 1 | 25 | 25 | HP-2 | Trane | 4TWR6048 | 208 | 1 | 28 | 50 | 1, 2, 3 |

- NOTES:
- Provide condensate overflow switch & programmable 7/24 thermostat with lockable cover.
 - Install units in accordance with manufacturer's recommendations.
 - Provide new filters after commissioning and final acceptance.

| DIFFUSER SCHEDULE | | | | |
|-------------------|------------|-----------|--|---------|
| TAG | SERVICE | NECK SIZE | DESCRIPTION | REMARKS |
| A | Supply Air | Ref. Plan | 24" x 24" Adjustable Square Cone Diffuser, Price ASCDA w/ Insulated Back Panel | 1, 2, 3 |
| B | Supply Air | Ref. Plan | 12" x 12" Adjustable Square Cone Diffuser, Price ASCDA w/ Insulated Back Panel | 1, 2, 3 |
| C | Return Air | Ref. Plan | 24" x 24" Perforated, Ducted Return, Titus PAR | 1, 2, 3 |

- Notes:
- Seal perimeter of diffusers/grilles to prevent moisture migration from attic space, as applicable.
 - R value of insulated back panels/plenums to exceed R-6.
 - Coordinate with owner / architect for color and finish.

| EXHAUST FAN SCHEDULE | | | | | | | | |
|----------------------|---------------|-----------|-------|----|---------|--------------|------------|------|
| TAG | FAN | | POWER | | | MAKE / MODEL | REMARKS | |
| | AIRFLOW (CFM) | TSP ("wc) | VAC | PH | HZ Amps | | | |
| EF-1 | 80 | 0.20 | 120 | 1 | 60 | 0.37 | Broan A80 | 1, 2 |
| EF-2 | 300 | 0.15 | 120 | 1 | 60 | 2.6 | Broan L300 | 1, 2 |

- Notes:
- Install per manufacturer's recommendations.
 - Furnish with matching grille.

LEGEND

- CFM NECK SIZE/MARK
- SUPPLY AIR GRILLE 4-WAY
- SUPPLY AIR 3-WAY BLOW
- SUPPLY AIR 2-WAY BLOW
- RETURN AIR GRILLE
- EXHAUST FAN
- THERMOSTAT
- SUPPLY AIR DUCT
- RETURN AIR DUCT
- DAMPER CONTROL (V.D.)
- ROUND FLEX DUCT, MAX. LENGTH 12'-0", MIN. R-6. DUCT SIZE AS FOLLOWS:
 250 CFM TO 350 CFM = 9"
 200 CFM TO 250 CFM = 8"
 150 CFM TO 200 CFM = 7"
 100 CFM TO 150 CFM = 6"

NOTE:
ALL MECHANICAL IS DRAWN DIAGRAMMATICALLY FOR CLARITY, FIELD VERIFY PRIOR TO FABRICATION.

NEW TRAINING FACILITY
 ST. TAMMANY FIRE PROTECTION DISTRICT NO. 1
 54750 S RANGE ROAD
 SLIDELL, LA 70666
 JOB NO: 2507
 DATE: 12-10-2024
 DRAWN BY: BAK
 CHECKED BY: CKD

SHEET TITLE:
MECHANICAL FLOOR PLAN, SCHEDULES AND DETAILS

DRAWING NUMBER:
M101

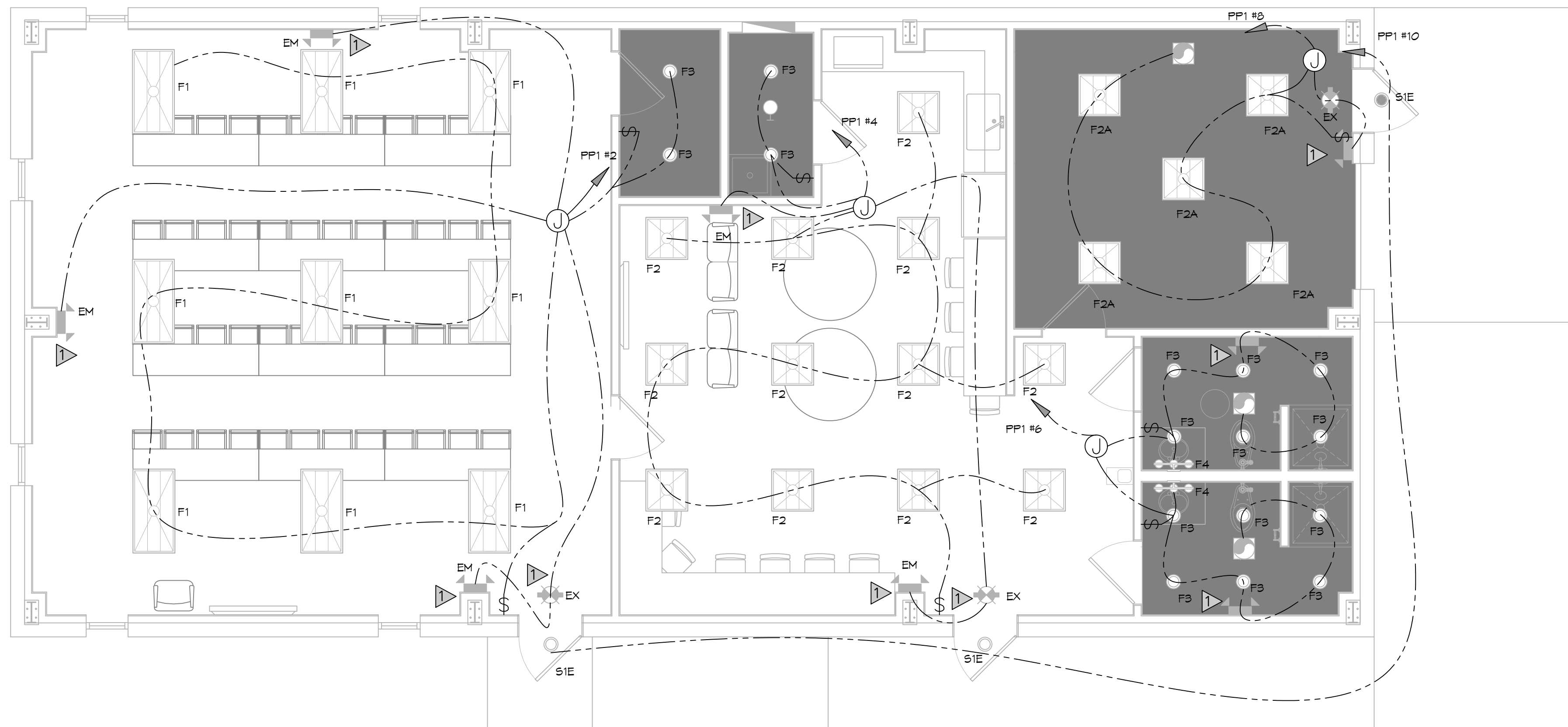
LIGHTING SCHEDULE

| TYPE | MFG | PART # | Description |
|------|-------|--|---|
| F1 | ELITE | 24-OEVHP-LED-3KL/4KL/5KL-DIM10-MVOLT-35K/40K/50K 85(4000L)(40K) | 2X4 RECESSED ARCH LED TROFFER 4000 LUMENS 40K |
| F2 | ELITE | 22-OEVHP-LED-2000L-3000L-4000L-DIM10-MVOLT-35K-40K(3000L)(40K) | 2X2 RECESSED ARCH LED TROFFER 3000 LUMENS 40K |
| F2A | ELITE | 22-OEVHP-LED-2000L-3000L-4000L-DIM10-MVOLT-35K-40K/22R(3000L)(40K) | 2X2 RECESSED ARCH LED TROFFER W/FLANGED KIT 3000 LUMENS 40K |
| F3 | ELITE | HH6-LED-1200L-DIM10-MVOLT-30K-WD-90/HH6-6501-CL-WH | 6" LED DOWNLIGHT 1200LUMENS 90CRI 30K |
| F4 | ELITE | ECH-BL-LED-1003-4-650L-30K-BN | 30" WALL MOUNT LED VANITY LIGHTING 30K BN |
| EX | ELITE | ELX-603 -R-W | LED EXIT |
| EM | ELITE | ELM-LED-803-W | LED EMERGENCY LIGHT W/BATTERY BACKUP |
| S1E | ELITE | OWP-FC-104-LED-1600L-MVOLT-40K-BZ-O-EMG-LED | LED SLIM WALL PACK 1600 LUMENS 40K W/ EMERGENCY BATTERY |

NOTE: NAMING A CERTAIN BRAND, MAKE OR MANUFACTURER IS TO DESIGNATE THE GENERAL STYLE, TYPE, CHARACTER AND QUALITY STANDARD OF THE PRODUCT DESIRED. SUBSTITUTION REQUESTS MUST BE SUBMITTED PRIOR TO BIDDING.

GENERAL LIGHTING NOTES

- ALL WORK SHALL COMPLY WITH APPLICABLE NATIONAL, STATE, AND LOCAL CODES, RULES, REGULATIONS, AND REQUIREMENTS OF THE SERVICE UTILITY COMPANY.
- GENERAL CONTRACTOR SHALL NOTIFY THE ARCHITECT IMMEDIATELY IF ANY CONFLICTS OCCUR BETWEEN LIGHTING AND ANY OTHER TRADE. DO NOT PROCEED WITH INSTALLATION IN THAT AREA UNTIL CONFLICT HAS BEEN RESOLVED TO THE SATISFACTION OF THE ARCHITECT AND ENGINEER.
- REFER TO ARCHITECTURAL DRAWINGS FOR EXACT LOCATION AND MOUNTING INSTRUCTIONS FOR ALL LIGHT FIXTURES. NOTIFY THE ARCHITECT AND ENGINEER OF ANY DISCREPANCIES BETWEEN THESE PLANS AND THE ARCHITECTURAL PLANS RELATING TO QUANTITY, TYPE AND LOCATION OF DEVICES AND/OR FIXTURES.
- WHEN SPECIFIC LIGHT FIXTURE HAS BEEN SPECIFIED IN THE FIXTURE SCHEDULE, ELECTRICAL CONTRACTOR SHALL PROVIDE COMPLETE ASSEMBLY INCLUSIVE ALL PARTS AND HARDWARE TO INSURE PROPER FUNCTIONING FIXTURE.
- ALL CONDUCTORS SHALL BE A MINIMUM OF #12 AWG UNLESS NOTED OTHERWISE.
- ALL 120V RUNS LONGER THAN 60 FEET SHALL BE #10 AWG AND 277V RUNS LONGER THAN 150 FEET SHALL BE #10 AWG UNLESS NOTED OTHERWISE.
- ALL CONDUCTORS SHALL BE COPPER.
- WHERE CONDUCTOR SIZES ARE NOTED ON DRAWINGS, THAT WIRE SIZE SHALL BE THROUGH THE ENTIRE RUN UNLESS OTHERWISE NOTED.
- MOUNTED LIGHT SWITCHES 48" AFF UNLESS NOTED OTHERWISE ON ARCHITECTURAL DRAWINGS.
- WHERE MORE THAN ONE SWITCH OCCURS IN THE SAME LOCATION, THEY SHALL BE INSTALLED IN A GANG TYPE BOX UNDER ONE COVER PLATE. ALL GANGED SWITCHES SHALL HAVE A COMMON SEAMLESS FACEPLATE. EACH MULTI-GANGED BOX SHALL BE NO MORE THAN SIX (6) SWITCHES WIDE. WHERE MORE THAN SIX (6) SWITCHES ARE SHOWN AT ONE (1) LOCATION, ADDITIONAL MULTI-GANGED BOXES SHALL BE STACKED VERTICALLY AND THE WIDTH OF THE MULTI-GANGS SHALL BE AS EVEN AS POSSIBLE.
- EACH DIMMER SWITCH SHALL HAVE A WATTAGE RATING 25% HIGHER THAN THE TOTAL WATTAGE OF ALL LIGHTS TO BE CONTROLLED BY THE DIMMER. DIMMER SIZES 600, 1000, 1500, AND 2000 WATTS, LUTRON NOVA T-STAR. WHERE SWITCHES ARE GANGED WITH DIMMERS, THE SWITCHES SHALL ALSO BE LUTRON NOVA T-STAR. FLUORESCENT AND LOW VOLTAGE DIMMERS SHALL BE LUTRON NOVA T-STAR.
- ALL EMERGENCY EXIT LIGHT FIXTURES SHALL HAVE 90 MINUTE BATTERY BACKUP WITH INTEGRAL TEST BUTTON AND SHALL BURN CONTINUOUSLY.
- ALL FLUORESCENT FIXTURES THAT UTILIZE DOUBLE-ENDED LAMPS AND CONTAIN BALLASTS SHALL BE PROVIDED WITH A DISCONNECTING MEANS IN ACCORDANCE WITH NEC 410.73G.
- TYPES NM AND NMC CABLES SHALL NOT BE PERMITTED TO BE EXPOSED IN DROPPED OR SUSPENDED CEILINGS.



28 LIGHTING PLAN
SCALE: 1/4"=1'-0"

LIGHTING LEGEND

- 2x4 LIGHT FIXTURE
- 2x2 LIGHT FIXTURE
- RECESSED LIGHT FIXTURE
- EXTERIOR LIGHT FIXTURE
- CEILING MOUNTED EXIT SIGN
- WALL MOUNTED EMERGENCY LIGHT
- SINGLE POLE LIGHT SWITCH
- 3-WAY LIGHT SWITCH
- JUNCTION BOX

LIGHTING KEY NOTES

- PROVIDE CONNECTION TO UN-SWITCHED HOT OF LIGHTING CIRCUIT AND SHALL HAVE 90 MINUTE EMERGENCY BATTERY BACKUP

DAMMON
ENGINEERING, INC.
LOUISIANA & MISSISSIPPI

Chief Engineer: Brian Mistich, PE
554 Old Spanish Trail
Slidell, LA 70458
www.dammonengineering.com
info@dammonengineering.com
PH: 985.649.5832

| REVISIONS | DATE | DESCRIPTION |
|-----------|------|-------------|
| | | |
| | | |
| | | |
| | | |
| | | |
| | | |
| | | |
| | | |
| | | |

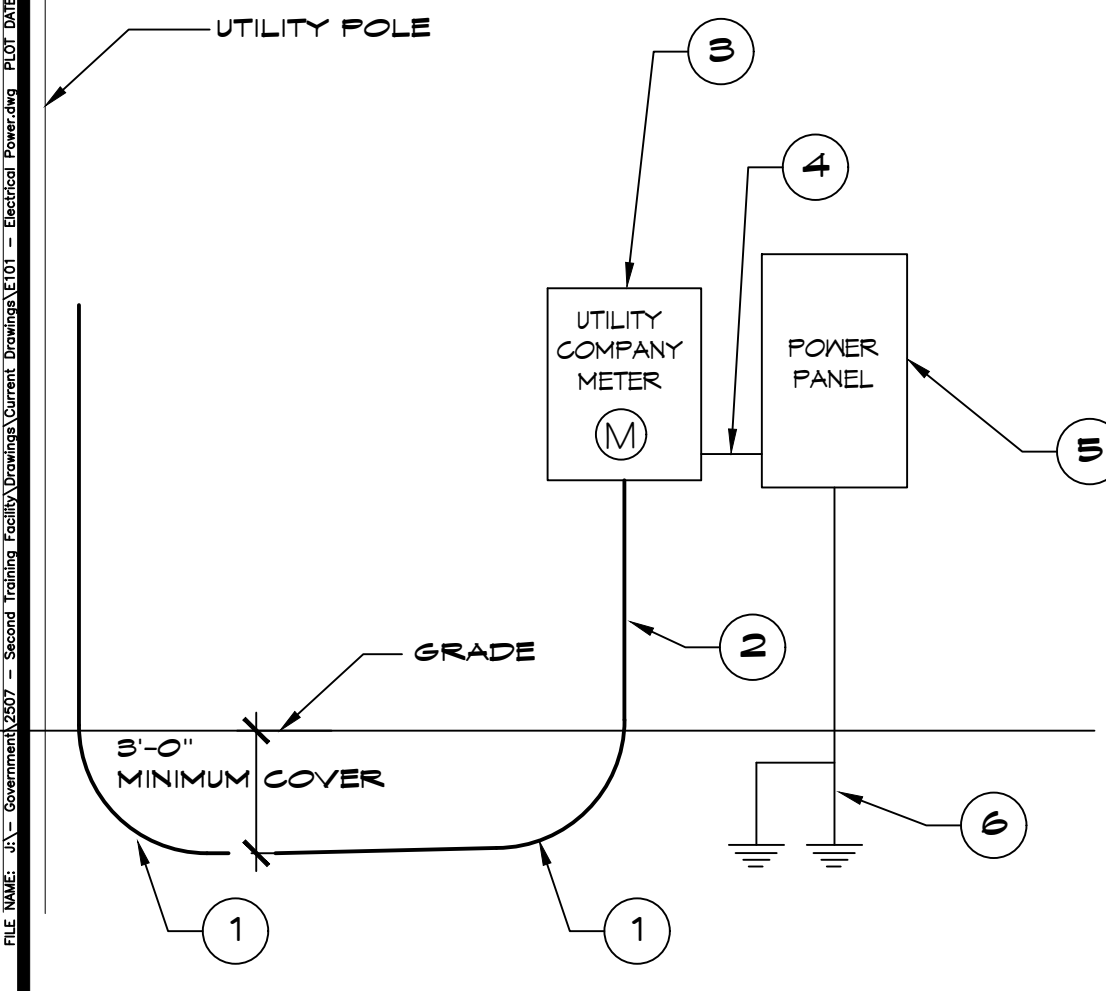


NEW TRAINING FACILITY
ST. TAMMANY FIRE PROTECTION
DISTRICT NO. 1

SHEET TITLE:
LIGHTING PLAN

DRAWING NUMBER:

E102



- ONE LINE NOTES:**
- 36" LONG SNEEP ELBOW
 - PROVIDE TWO (2) 3" SCHEDULE 40 PVC CONDUIT BELOW GRADE AND SCH 80 PVC CONDUIT ABOVE GRADE WITH SUITABLE FISH WIRE.
 - 120/240V 1Ø 200amp METER PAN.
 - 3 #4 THHN, 1 #2 GND, 2-1/2" C
 - 120/240V 1Ø 200A PANELBOARD WITH MAIN BREAKER.
 - 2-3/4" x 10' CU CLAD GND ROD, #1/0 CU GND WIRE. PROTECT IN PVC PIPE. CONNECT TO METAL BLDG, COLD WATER SUPPLY & GAS LINE. CAD WELD ALL CONNECTIONS.

RISER DIAGRAM
SCALE: NTS

| PANEL SCHEDULE | | | | | | | | | | | |
|--------------------------------|----------------|-------------------------------------|------------------|---|------------|-------------|------------------|---|----------|----------------|--------|
| PANEL LOCATION: EQUIPMENT ROOM | | INTERRUPTING RATING: 10 KAIC | | VOLTAGE ENCLOSEURE: 240/120V, 200A, 1Ø, 3Ø W MAIN CIRCUIT | | BREAKER | | | | | |
| CKT NO | THHN WIRE SIZE | LOAD DESCRIPTION | BREAKER AMP POLE | LOAD (KVA) | LOAD (KVA) | | BREAKER POLE AMP | LOAD DESCRIPTION | LOCATION | THHN WIRE SIZE | CKT NO |
| | | | | | AP | BP | | | | | |
| 1 | #12 | RECEPTACLES CLASSROOM 3 | 20 1 | 1000 | | | 20 | LIGHTS, CLASSROOM 3 AND CLOSET | | #12 | 2 |
| 3 | #12 | RECEPTACLES CLASSROOM 3 AND CLOSETS | 20 1 | 1000 | | | 20 | LIGHTS, LOUNGE AND KITCHEN AND UTILITY CLOSET | | #12 | 4 |
| 5 | #12 | RECEPTACLES STUDY | 20 1 | 1000 | | | 20 | LIGHTS AND EXHAUST FAN (BATHROOMS) | | #12 | 6 |
| 7 | #12 | RECEPTACLE, MICROWAVE | 20 1 | 1800 | | | 20 | LIGHTS AND EXHAUST FAN (GEAR ROOM) | | #12 | 8 |
| 9 | #12 | RECEPTACLE, REFRIGERATOR | 20 1 | 1800 | | | 20 | LIGHTS EXTERIOR | | #12 | 10 |
| 11 | #12 | RECEPTACLES GEAR ROOM AND KITCHEN | 20 1 | 1000 | | | | SPACE | | | 12 |
| 13 | #12 | RECEPTACLES OUTSIDE | 20 1 | 120 | | | | SPACE | | | 14 |
| 15 | #12 | RECEPTACLE FOR WATER COOLER | 20 1 | 900 | | | | SPACE | | | 16 |
| 17 | #12 | RECEPTACLES, BATHROOMS | 20 1 | 900 | | | | SPACE | | | 18 |
| 19 | #12 | RECEPT. TV, CLASSROOM 3 | 20 1 | 900 | | | | SPACE | | | 20 |
| 21 | | SPARE | 20 1 | | | | | SPACE | | | 22 |
| 23 | #12 | RECEPT. TV, STUDY | 20 1 | 900 | | | | SPACE | | | 24 |
| 25 | | SPARE | 20 1 | | | | | SPACE | | | 26 |
| 27 | | SPARE | 20 1 | | | | | SPACE | | | 28 |
| 29 | | SPARE | 20 1 | | | | | SPACE | | | 30 |
| 31 | #10 | WATER HEATER | 50 2 | 2500 | | | | SPACE | | | 32 |
| 33 | #10 | AHU-1 | 25 2 | 1450 | | | 45 | HEAT PUMP-1 | | | 33 |
| 35 | #10 | AHU-2 | 25 2 | 1450 | | | 50 | HEAT PUMP-2 | | | 34 |
| 37 | | | | | | | | | | | |
| 39 | | | | | | | | | | | |
| 41 | | | | | | | | | | | |
| | | | | TOTAL CONNECTED LOAD (KVA) = 42,250 | | | | | | | |
| | | | | AP = 21,240 | | BP = 20,760 | | | | | |

ELECTRICAL LOAD SUMMARY

| | |
|--|------------------------------|
| POWER COMPANY: | Cleco |
| PROJECT NAME: | NEW TRAINING FACILITY |
| PROJECT ADDRESS: | 34780 RANGE ROAD |
| CITY/TOWN: | SLIDELL, LOUISIANA 70460 |
| INTENDED USER: | ST. TAMMANY FIRE TRAINING |
| REQUIRED SERVICE: | 240/120 VOLTS 1 PHASE 3 WIRE |
| SERV ENTR SIZE: | 200 AMPS |
| HVAC TONNAGE: | 15 TONS |
| LARGEST MOTOR: | HP |
| NOTE: MOTORS ABOVE 20 HP MAY REQUIRE REDUCED VOLTAGE STARTING AND ARE NEVER RECOMMENDED FOR USE WITH 240/120V, 1 PH, 3 W SERVICE | |
| TOTAL BUILDING SQUARE FOOTAGE: | S.F. |
| INDIVIDUAL UNIT SQUARE FOOTAGE: | 0 S.F. |
| INDIVIDUAL UNIT DESIGNATION: | (MULT OCCUPANCY) |

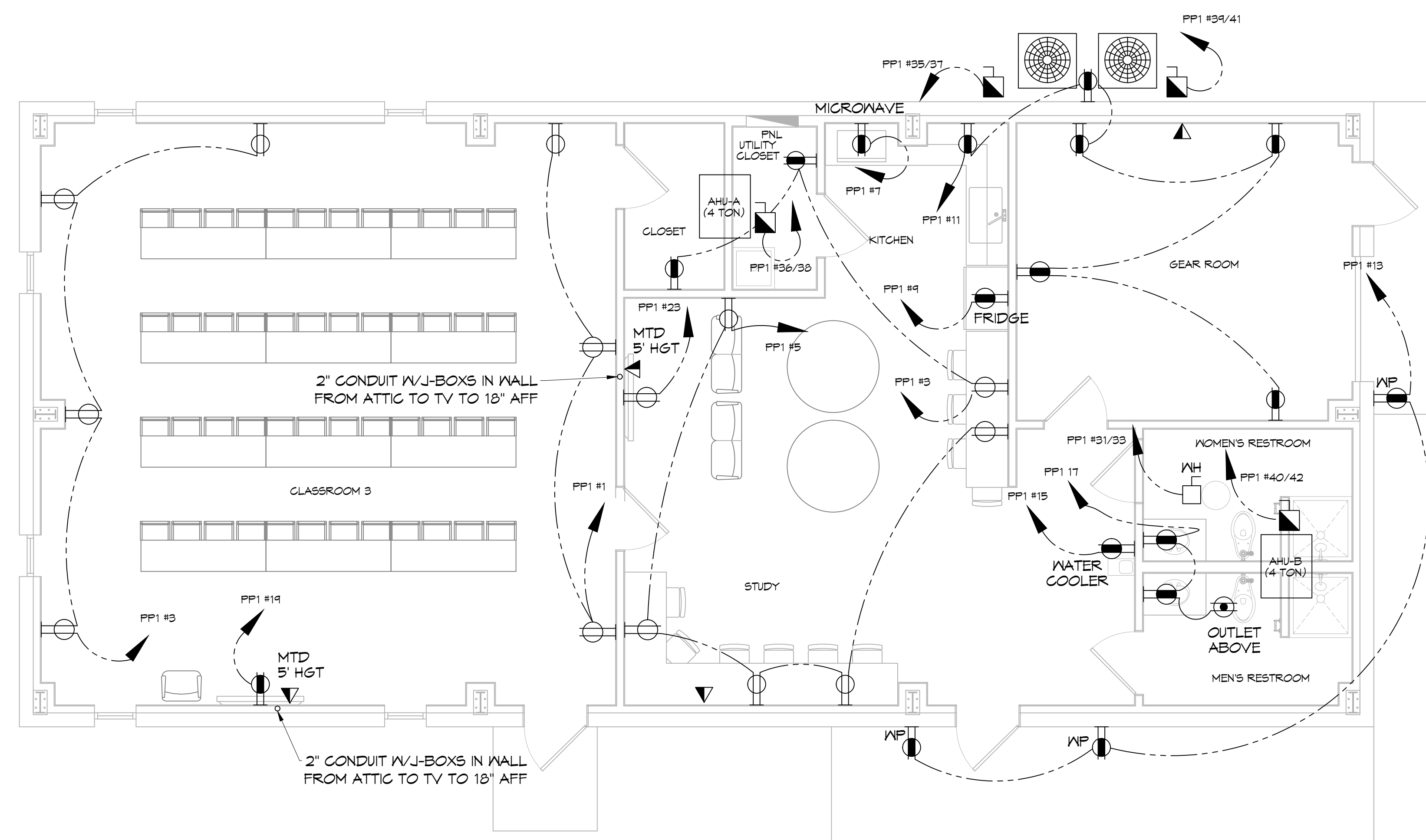
| LOAD SOURCE | 1Ø KVA | 3Ø KVA | OR | 1Ø KW | 3Ø KW |
|------------------------------|-------------|------------|----|------------|------------|
| BUILDING LIGHTING | 2.1 | | | | |
| ELECTRIC WATER HEATING | 5.0 | | | | |
| HEAT PUMPS | 18.2 | | | | |
| SUPPLEMENTAL HEAT SYSTEMS | 5.8 | | | | |
| AIR COND CONDENSING UNITS | | | | | |
| ELEC HEATING (PRIMARY) AHUS | | | | | |
| COOKING | | | | | |
| REFRIGERATION | 1.5 | | | | |
| RECEPTACLES (STANDARD) | 7.5 | | | | |
| RECEPTACLES (COMPUTER) | | | | | |
| TOTAL MOTORS (EXCLUDE HVAC) | | | | | |
| EXTERIOR LIGHTING | 0.5 | | | | |
| MISCELLANEOUS - CEILING FANS | | | | | |
| OTHER | | | | | |
| TOTAL CONNECTED LOAD | 41.2 | 0.0 | | 0.0 | 0.0 |

GENERAL POWER NOTES

- ALL WORK SHALL CONFORM TO THE LATEST EDITION OF THE NATIONAL ELECTRICAL CODE, THE GOVERNING ELECTRICAL CODE AND ALL OTHER INSPECTION DEPARTMENTS HAVING JURISDICTION. OBTAIN CERTIFICATES OR APPROVAL WHERE REQUIRED. ELECTRICAL CONTRACTOR SHALL VERIFY ALL WIRE AND CONDUIT SIZES FOR MECHANICAL EQUIPMENT TO BE INSTALLED.
- ALL MATERIALS FURNISHED SHALL BE NEW AND SHALL BE U.L. LISTED.
- THE DRAWINGS INDICATE SIZE AND GENERAL LOCATION OF WORK. SCALE DIMENSIONS SHALL NOT BE USED. THE EXACT LOCATION OF ALL LIGHTING FIXTURES, RECEPTACLES AND TELEPHONE OUTLETS, ETC, SHALL BE DETERMINED BY ACTUAL CONDITIONS IN THE FIELD.
- PRIOR TO BIDDING, CONTRACTOR SHALL VISIT THE JOB SITE AND FAMILIARIZE THEMSELVES WITH THE EXISTING CONDITIONS.
- ELECTRICAL CONTRACTOR SHALL COORDINATE HIS WORK WITH OTHER TRADES AND WITH OTHER CONTRACTORS WHOSE WORK MAY AFFECT THIS INSTALLATION.
- ELECTRICAL CONTRACTOR SHALL COORDINATE INCOMING ELECTRICAL SERVICE WITH UTILITY COMPANY AND INCLUDE IN HIS BID ALL CHARGES AND FEES INCURRED IN MODIFICATIONS.
- ELECTRICAL CONTRACTOR SHALL COORDINATE THE TELEPHONE INSTALLATION WITH THE TELEPHONE COMPANY AND THE GENERAL CONTRACTOR.
- ELECTRICAL CONTRACTOR, BEFORE INSTALLING ANY OF THE WORK, SHALL SEE THAT IT DOES NOT INTERFERE WITH CLEARANCES REQUIRED FOR FINISHED COLUMNS, HUNG CEILINGS, PLASTER, PARTITIONS, WALLS, ETC, AS SHOWN IN THE ARCHITECTURAL DRAWINGS AND DETAILS. IF ANY WORK IS INSTALLED AND IT LATER DEVELOPS THAT SUCH DETAILS OR DESIGN CANNOT BE FOLLOWED, THE CONTRACTOR, AT HIS OWN EXPENSE, SHALL MAKE SUCH CHANGES IN THE WORK AS DIRECTED BY THE ARCHITECT, AS WELL AS TO PERMIT THE INSTALLATION OF THE ARCHITECTURAL WORK AS SHOWN ON THE PLANS AND DETAILS.
- PERFORM TEST REQUIRED BY THE OWNER OR THE ENGINEER IN CONNECTION WITH THE OPERATION OF THE ELECTRICAL SYSTEM IN THE BUILDING. ALL TESTS SHALL BE MADE IN ACCORDANCE WITH THE LATEST STANDARD OF THE IEEE AND THE NATIONAL ELECTRICAL CODE.
- MINIMUM CONDUCTOR SIZE SHALL BE #12, 600V INSULATION.
- MINIMUM SIZE CONDUIT SHALL BE 3/4" ELECTRICAL METALLIC TUBING (EMT) FOR INTERIOR USE, 3/4" RIGID ALUMINUM FOR EXTERIOR USE ABOVE GRADE AND 1" SCHEDULE 40 PVC, BURIED A MINIMUM OF 18" FOR NON-VEHICULAR TRAFFIC AREAS, AND 3 FT IN VEHICULAR TRAFFIC AREAS. EMT SHALL BE USED WITH METAL STUD CONSTRUCTION AND ALL ASSEMBLY OCCUPANCIES. 6 FT LENGTH MC CABLE IS ALLOWED ABOVE DROPPED CEILING.
- INTERIOR FITTINGS SHALL BE CAST WHERE EXPOSED ON WALLS, AND EXTERIOR FITTINGS SHALL BE CAST BOXES WITH NEMA 3R COVER(S).
- CONTRACTOR SHALL INSTALL WIRING AND OTHER CIRCUIT COMPONENTS TO MATCH EQUIPMENT ACTUALLY INSTALLED.
- ALL 120V RUNS LONGER THAN 60 FEET SHALL BE #10 AWG AND 277V RUNS LONGER THAN 150 FEET SHALL BE #10 AWG UNLESS NOTED OTHERWISE.
- INSTALL GROUND FAULT RECEPTACLES AT RECEPTACLE LOCATIONS WITHIN 5' OF SINKS OR LAVATORIES, AND AT EXTERIOR LOCATIONS. EXTERIOR RECEPTACLES SHALL ALSO BE WATERPROOF. ALL RECEPTACLES IN A KITCHEN AREA SHALL HAVE GROUND FAULT PROTECTION.
- BONDING AND GROUNDING SHALL BE IN ACCORDANCE WITH NFPA 70:250-65, NFPA 250-23, 250-11 & 250-12.
- GROUND NEUTRAL IN ACCORDANCE WITH NFPA 70:250-23b.
- FUSES SHALL BE ITC CLASS K5, 250 VOLT, 200,000 AMP INTERRUPTING CAP.
- PROVIDE SERVICES OF A FIRE/SMOKE DETECTION AND ALARM COMPANY TO DESIGN AND INSTALL ALARM SYSTEM TO MEET REQUIREMENTS OF THE STATE FIRE MARSHALL AND THE FIRE DISTRICT.
- EXTERIOR LIGHTING SHALL BE SHADED OR INWARDLY DIRECTED IN SUCH A MANNER SO THAT NO DIRECT LIGHTING OR GLARE IS CAST BEYOND THE PROPERTY LINE. THE INTENSITY OF SUCH LIGHTING SHALL NOT EXCEED ONE FOOT CANDLE AS MEASURED AT THE ABUTTING PROPERTY LINE.
- ALL ELECTRICAL, MECHANICAL AND PLUMBING PENETRATING FIRE PARTITIONS SHALL BE FIRE CAULKED. (PENETRATIONS THROUGH RAISED CONSTRUCTION SHALL BE SEALED WITH A MATERIAL CAPABLE OF PREVENTING THE PASSAGE OF FLAMES AND HOT GASES WHEN TESTED IN ACCORDANCE WITH ASTM-E814.)
- VERIFY ELECTRICAL CONNECTIONS PER MANUFACTURER'S RECOMMENDATIONS.
- TYPES NM AND NMC CABLES SHALL NOT BE PERMITTED TO BE EXPOSED IN DROPPED OR SUSPENDED CEILING.

POWER LEGEND

- DUPLEX RECEPTACLE - WALL MOUNTED
- GFCI DUPLEX RECEPTACLE - WALL MOUNTED
- WEATHER PROOF GFCI DUPLEX RECEPTACLE - WALL MOUNTED
- DATA OUTLET - WALL MOUNTED
- DISCONNECT SWITCH W/ VIABLE BLADES
- FUSE DISCONNECT SWITCH W/ VIABLE BLADES
- JUNCTION BOX



27 POWER PLAN
SCALE: 1/4"=1'-0"

DAMMON ENGINEERING, INC.
LOUISIANA & MISSISSIPPI

www.dammonengineering.com
info@dammoneng.com
PH: 504-649-5832

State Engineer: Brian Michot, PE
5470 S RANGE ROAD
Slidell, LA 70460
PH: 504-885-7888

| REVISIONS | DATE | DESCRIPTION |
|-----------|------|-------------|
| | | |
| | | |
| | | |



**NEW TRAINING FACILITY
ST. TAMMANY FIRE PROTECTION
DISTRICT No. 1**

34780 S RANGE ROAD
SLIDELL, LA 70460

JOB No: 2507 DATE: 12-19-2024
DRAWN BY: C&K CHECKED BY: BAW

SHEET TITLE: POWER PLAN

DRAWING NUMBER: **E101**

SHEET No: 14 of 15