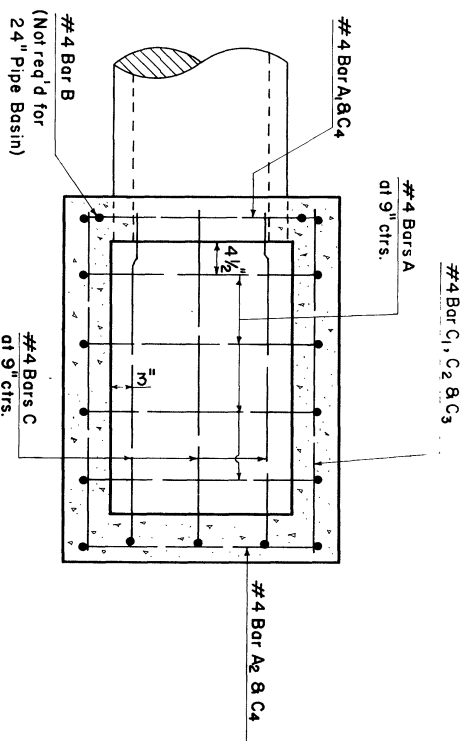
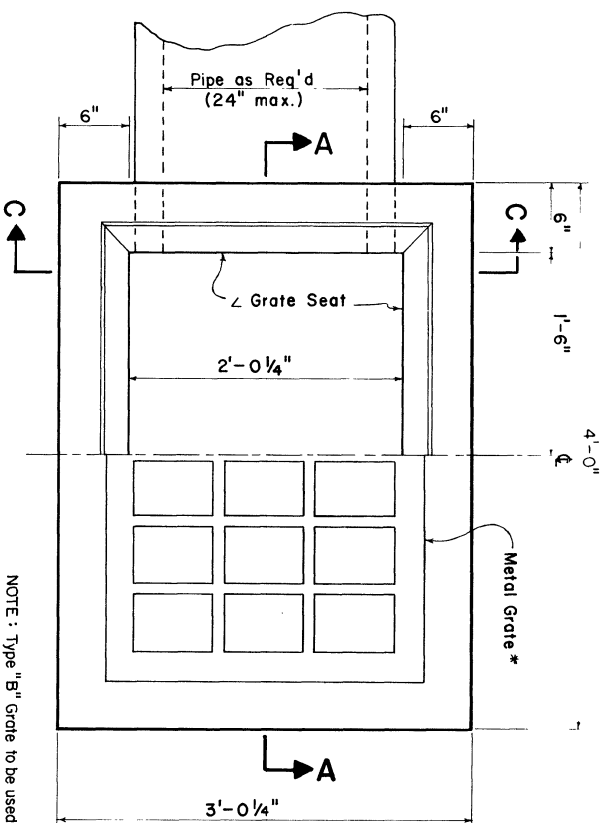


\* Grate to be Type B or C.  
Type B Shown.



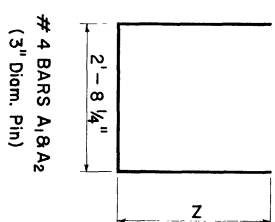
**HORIZONTAL SECTION**  
(Showing Bottom Slab Reinf. Steel)



**PLAN**

NOTE: Type "B" Grate to be used where no pedestrian traffic is expected.  
Type "C" Grate to be used where pedestrian traffic is expected.

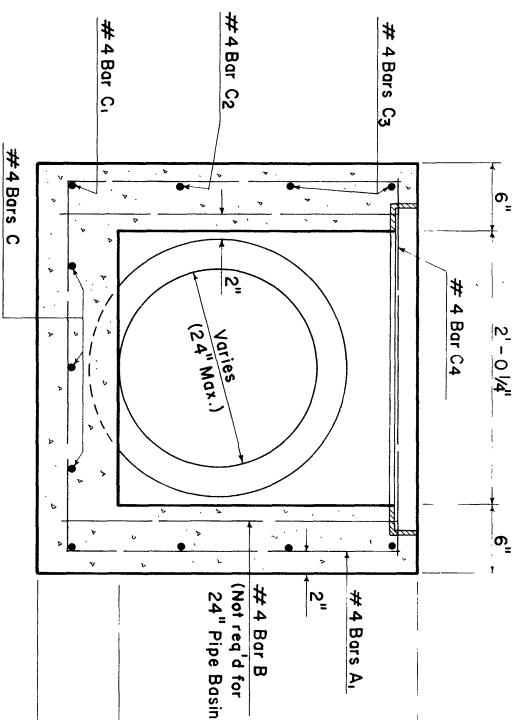
Basin for Pipe Size	DIMENSIONS			
	D Ft.-In.	D <sub>1</sub> Ft.-In.	D <sub>2</sub> Ft.-In.	L <sub>1</sub> Ft.-In.
15" & Smaller	1-11 1/4	0-10 3/8	0-6	3-4 3/8
18"	2-2 1/2	0-10 3/8	0-6	3-4 1/8
24"	2-9	1-4 3/8	1-0 3/8	3-4 1/8



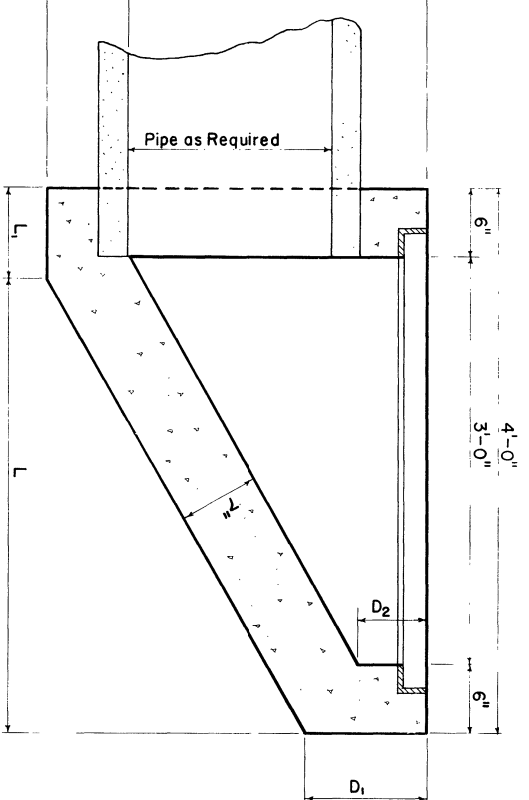
#4 BARS A, B & C  
(3" Diam. Pin)

Basin for Pipe Size	#4 BARS A, B & C	
	Bar A <sub>1</sub> Ft.-In.	Bar A <sub>2</sub> Ft.-In.
15" & Smaller	2-1	0-4 1/2
18"	2-4 1/2	0-4 1/2
24"	2-10	0-10

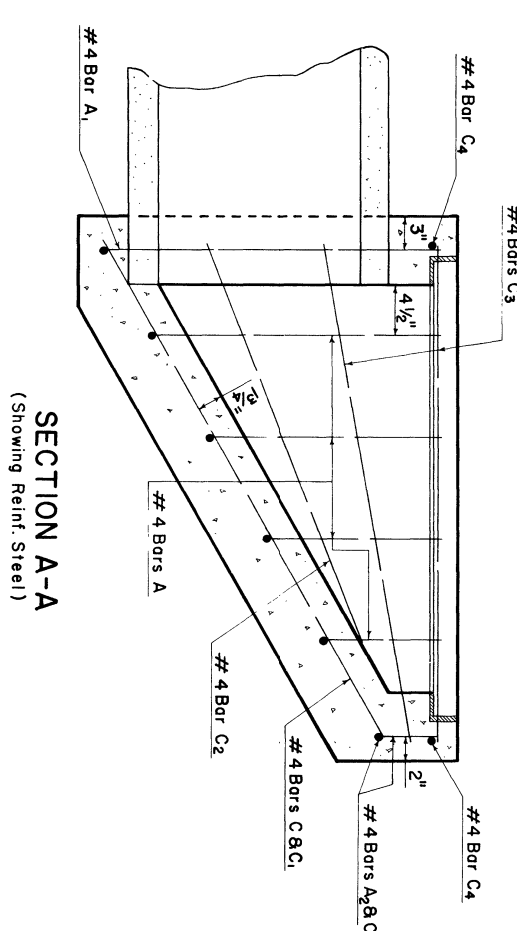
NOTES:  
All dimensions relating to Reinf. Steel are to bar ctrs.  
For Details & Dimensions of Grate & Seat, See Std. Plan MC-01 (Type B or C).  
Std. Plan MC-01 may be obtained from:  
Hydraulics & Standard Plans Department of Transportation and Development  
P.O. Box 44245  
Capital Station  
Baton Rouge, La. 70804



**SECTION C-C**

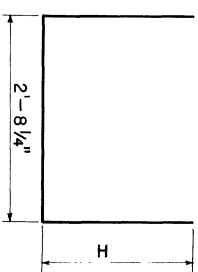


**SECTION A-A**  
(Showing Dimensions)



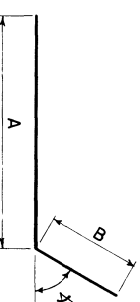
**SECTION A-A**  
(Showing Reinf. Steel)

Basin for Pipe Size	#4 BARS A	
	Short Bar Variation Ft.-In.	Long Bar No. Bars
15" & Smaller	0-8 1/2	4
18"	0-9	4
24"	1-3	4



#4 BARS A  
(3" Diam. Pin)

Basin for Pipe Size	#4 BARS C	
	A Ft.-In.	B Ft.-In.
15" & Smaller	4-1	0-4
18"	4-2	0-4
24"	4-3	0-10



#4 BARS C  
(3" Diam. Pin)

STANDARD PLAN NO. **CB-03**  
**OPEN TOP CONCRETE CATCH BASIN**  
MAX. PIPE: 24"  
MIN. DEPTH BASIN

DATE: 6-25-82 To Be Used In Conjunction With SSMCOI

DEPARTMENT OF TRANSPORTATION & DEVELOPMENT

DESIGNED	CHECKED	DATE	DESIGNED	CHECKED	DATE
CDU	JCM		CDU	JCM	
CDU	JCM		CDU	JCM	
CDU	JCM		CDU	JCM	

APPROVED

DATE

CHEF ENGINEER