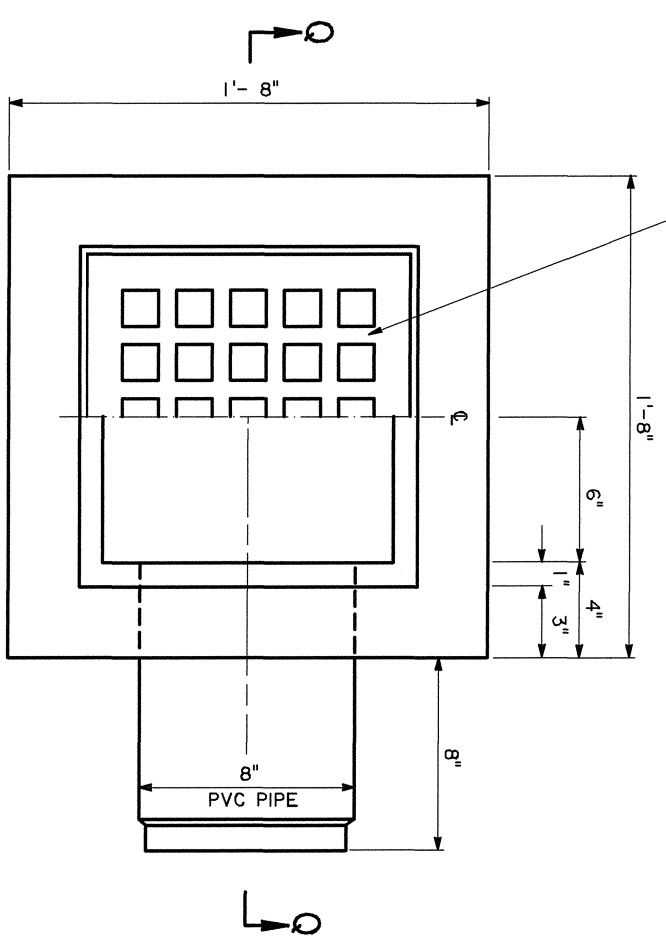
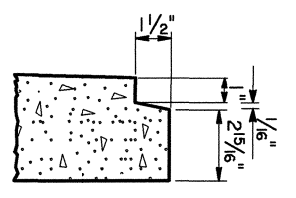


FOR DETAILS OF CAST IRON GRATE, SEE STD. PLAN MC-01, TYPE D.



PLAN
WEIGHT APPROX. 460 LBS PLUS GRATE



INSET A
(TYPICAL)

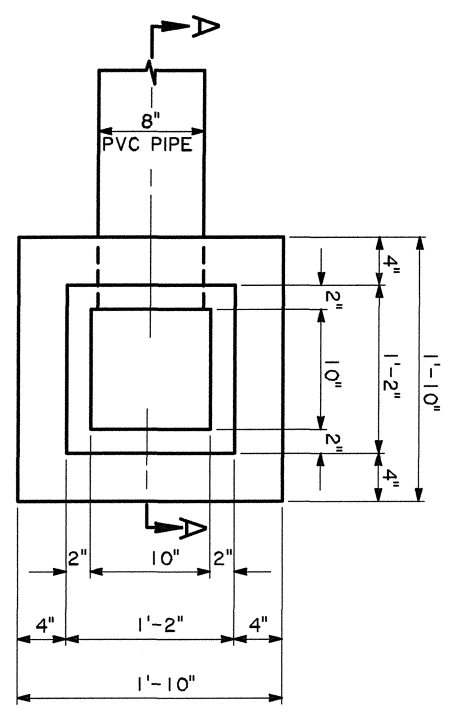
PRECAST OPTION

NOTES:
CONCRETE TO ATTAIN A MINIMUM COMPRESSIVE STRENGTH OF 4000 PSI BEFORE ACCEPTANCE AND SHIPPING OF UNITS.
CATCH BASIN TO BE SUPPLIED COMPLETE, INCLUDING C.I. GRATE.
THE CATCH BASIN SUPPLIER SHALL BE RESPONSIBLE FOR SELECTION AND PLACEMENT OF ANY PICK-UP AND HANDLING DEVICES. SETTING TOLERANCE TO BE +0 & -1".

NOTE:
STANDARD PLAN MC-01 (DETAILS OF GRATES, FRAMES, SEATS LIDS, ETC.), MAY BE OBTAINED FROM:
HYDRAULICS & STANDARD PLANS
DEPARTMENT OF TRANSPORTATION
AND DEVELOPMENT
P.O. BOX 94245
CAPITOL STATION
BATON ROUGE, LA 70804

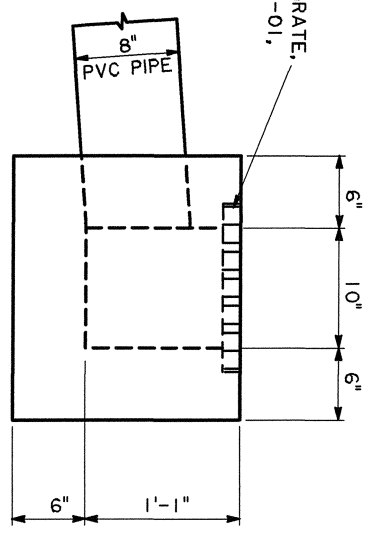
CAST-IN-PLACE OPTION

CLASS "M" CONCRETE

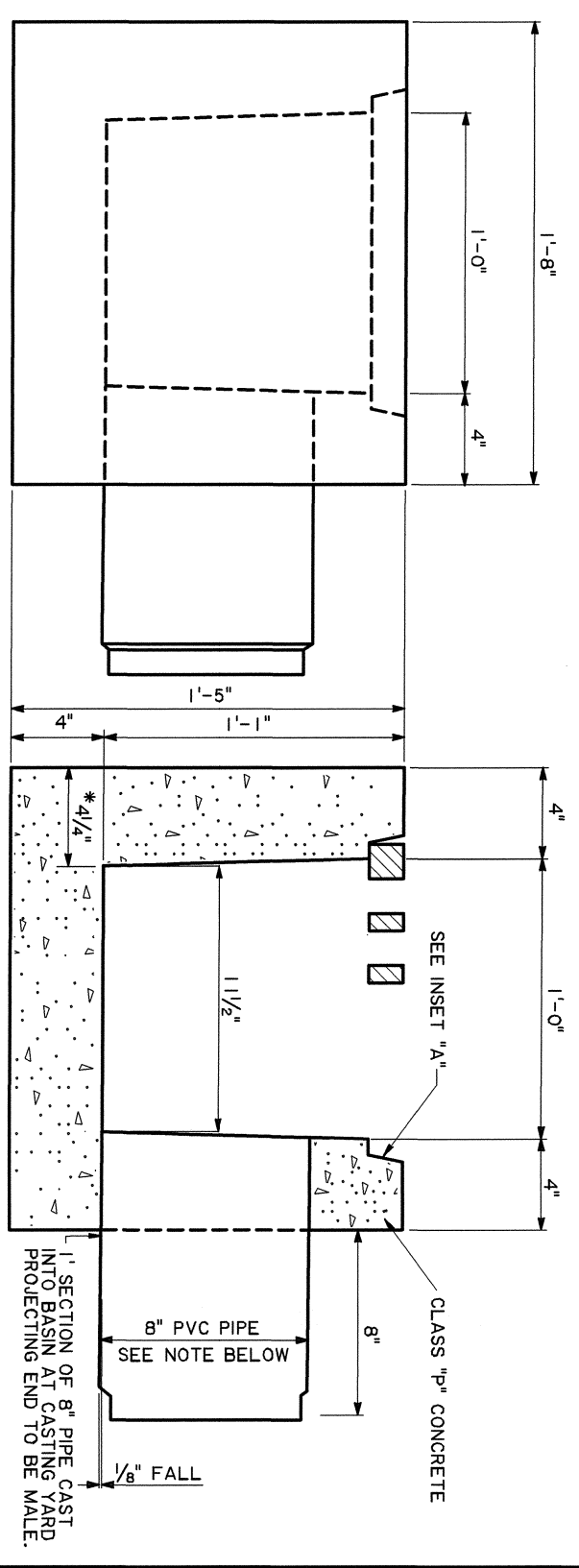


PLAN
GRATE NOT SHOWN

FOR DETAILS OF GRATE, SEE STD. PLAN MC-01, TYPE D.



ELEVATION



*4" UNIFORM WALLS MAY BE USED, AT SUPPLIERS OPTION.

SEE INSET "A"

CLASS "P" CONCRETE

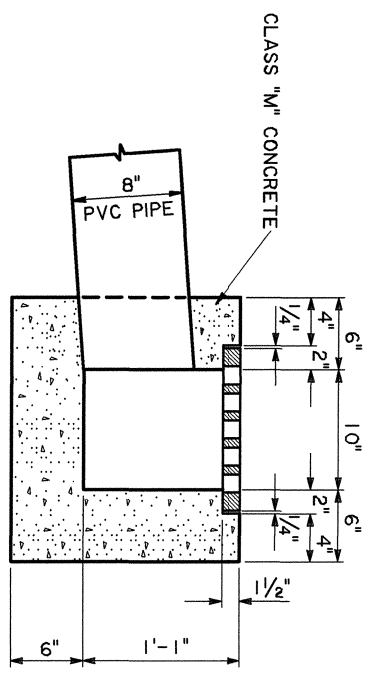
8" PVC PIPE
SEE NOTE BELOW

1" SECTION OF 8" PIPE CAST INTO BASIN AT CASTING YARD PROJECTING END TO BE MALE.

ELEVATION

SECTION Q-Q

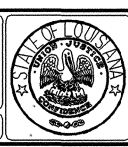
NOT TO BE USED WHERE SUBJECT TO VEHICULAR TRAFFIC



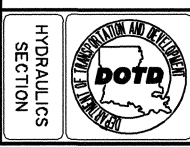
SECTION A-A

NOT TO BE USED WHERE SUBJECT TO VEHICULAR TRAFFIC

CONCRETE CATCH BASIN
YARD DRAIN TYPE - PRECAST OR CAST-IN-PLACE MAX. PIPE: 8"
To be used in conjunction with Std. Plan MC-01
STANDARD PLAN CB-05



11-2-00	Redrafted Original Standard, Minor Revisions	WMR	DESIGNED	CDJ	PARISH
1-27-81	Retraced, Precast Option	WTJ	CHECKED	JCM	FEDERAL PROJECT
	DATE	BY	DETAILED	DF	STATE PROJECT
	REVISION DESCRIPTION		CHECKED	KAJ	
	APPROVED BY		DATE	1-30-80	
	CHIEF ENGINEER: Original Signed by Chief Engineer		SHEET	1 OF 1	



SHEET NUMBER