

DATE: 03-27-25

### GENERAL PAVING NOTES

- ALL NEW CONCRETE SHALL HAVE A MINIMUM COMPRESSIVE STRENGTH OF 3,000 PSI AT 28 DAYS AND A MINIMUM THICKNESS OF 6". CONCRETE MIX SHALL BE IN ACCORDANCE WITH THE LATEST REVISION OF ASTM C-150 TYPE 1.
- ALL REINFORCING STEEL SHALL MEET ASTM-A615 (GRADE 60).
- ALL REINFORCING STEEL SHALL BE SECURELY SUPPORTED TO PREVENT BOTH VERTICAL AND HORIZONTAL MOVEMENT DURING CONCRETE PLACEMENT. ALL CONTROL AND EXPANSION JOINTS SHALL BE LOCATED AND INSTALLED AS SHOWN ON THE PAVING PLAN AND IN ACCORDANCE WITH THE MANUFACTURER'S RECOMMENDATIONS.
- ALL SUB GRADE FILL SHALL BE SELECT GRANULAR MATERIAL COMPACTED TO 95% STANDARD PROCTOR DENSITY IN A MAXIMUM OF 6" LIFTS.
- ANY WORK WITHIN THE ROADWAY OR ADJACENT TO THE ROADWAY CAUSING AN INTERFERENCE TO VEHICULAR TRAFFIC MUST CONFORM TO THE REQUIREMENTS SET FORTH BY THE UNIFORM MANUAL OF TRAFFIC CONTROL DEVICES OF THE STATE OF LOUISIANA. THE CONTRACTOR MUST FURNISH ALL NECESSARY TRAFFIC SIGNS AND/OR BARRICADES AND MAINTAIN THEM DURING CONSTRUCTION ACTIVITY.

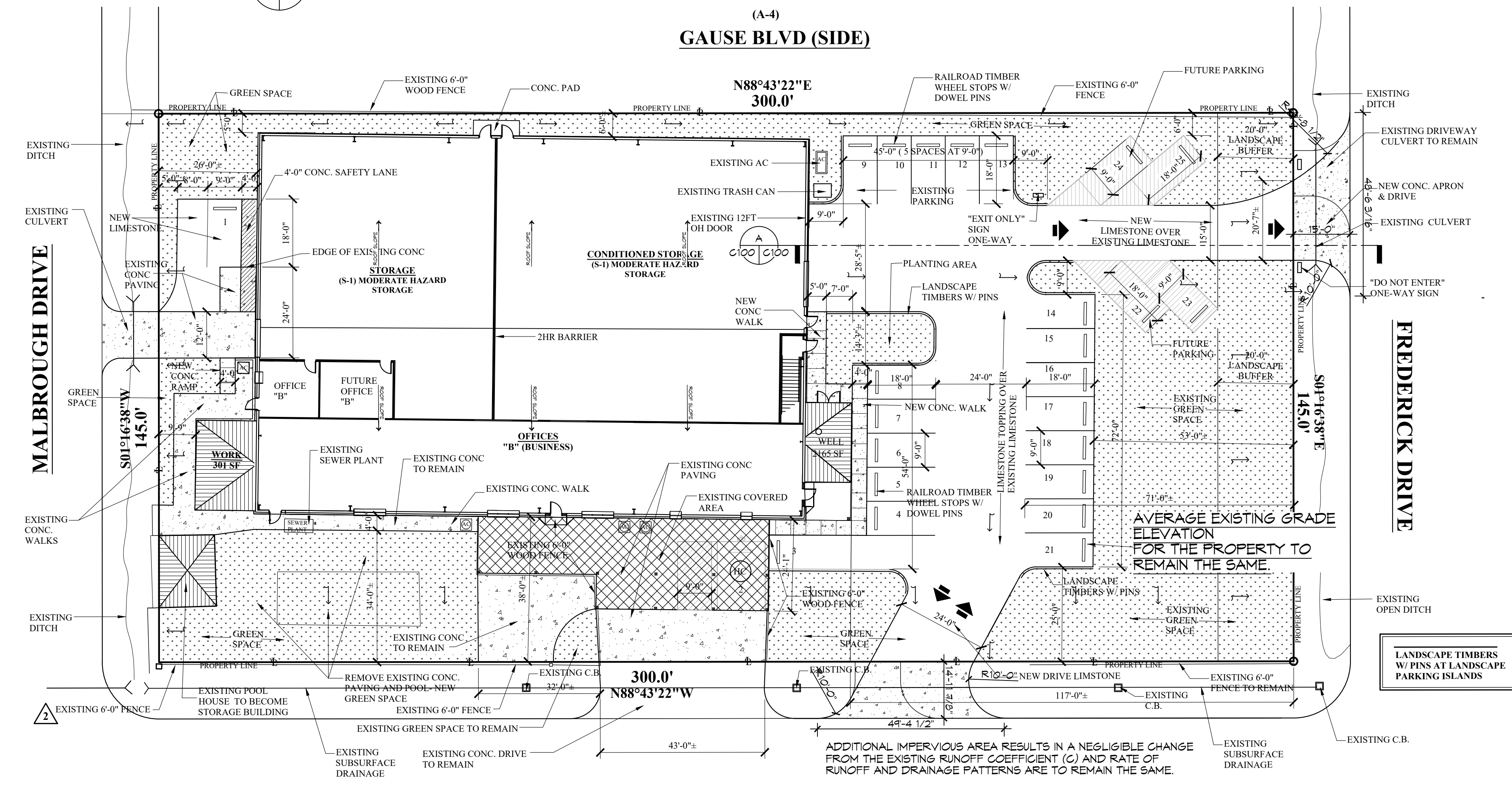
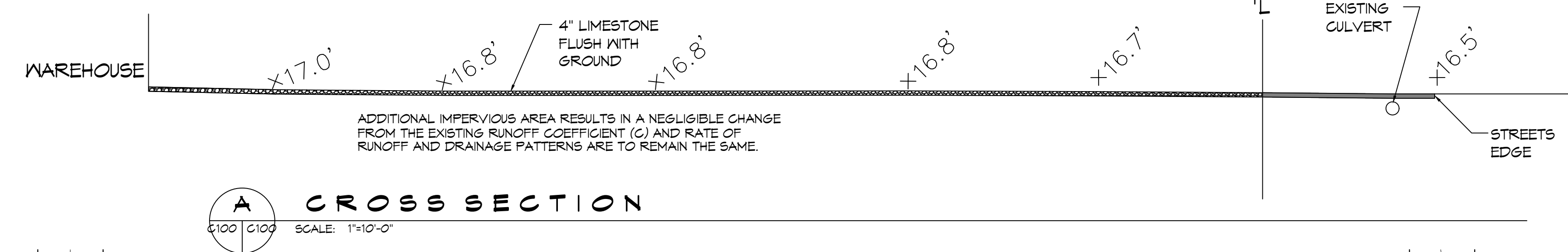
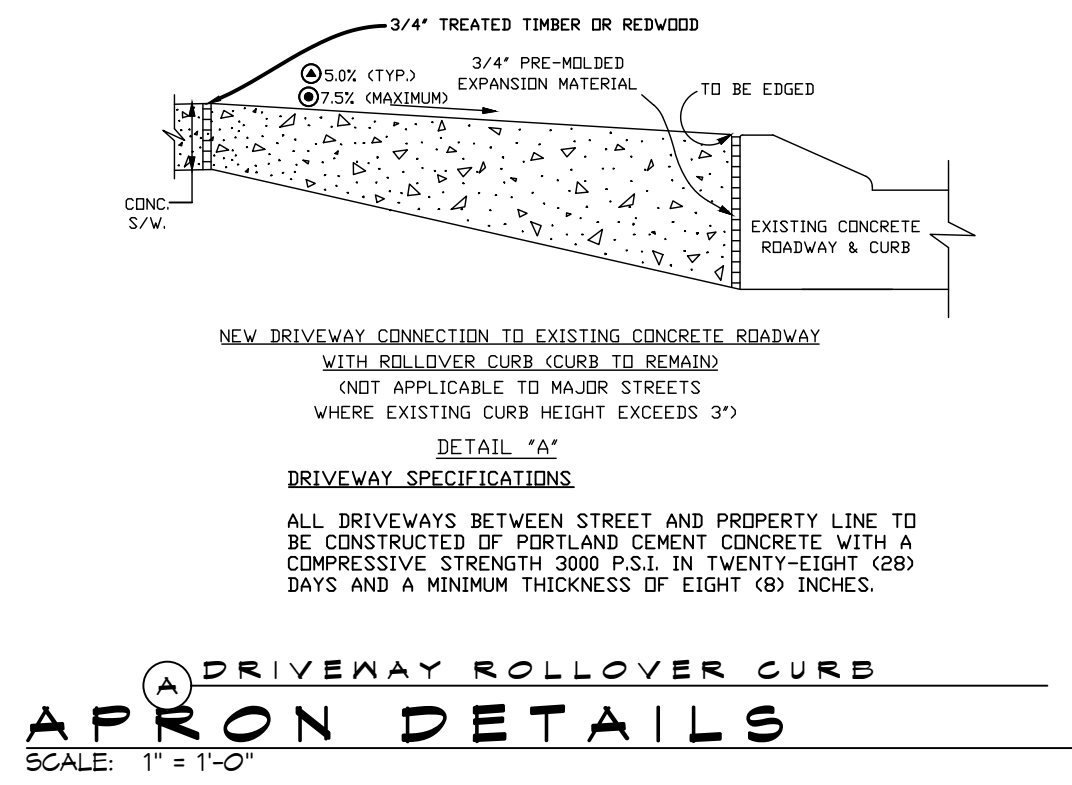
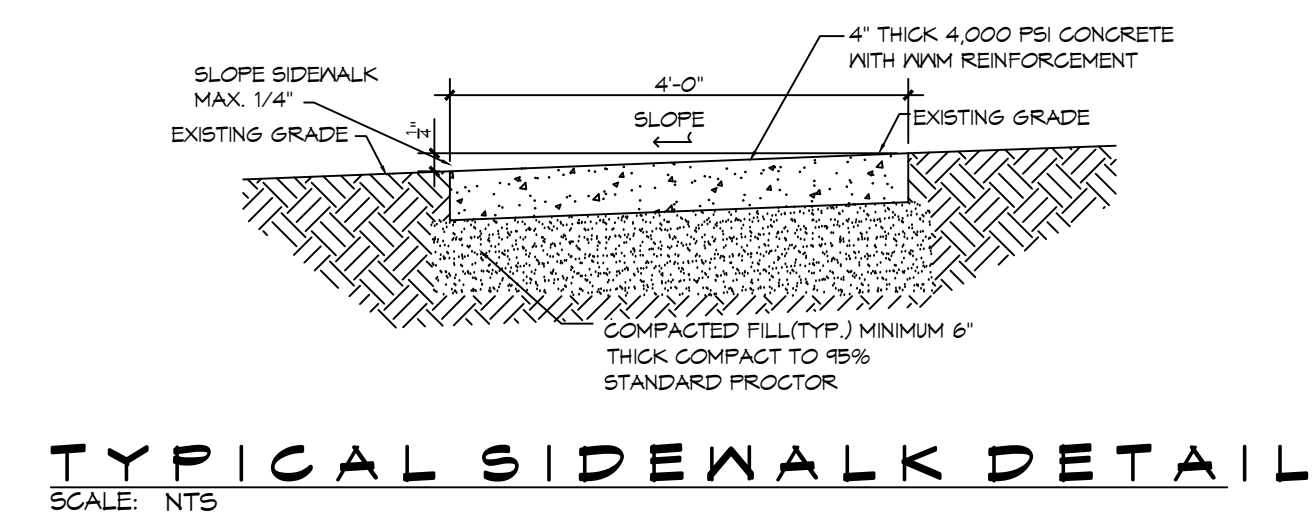
### DRAINAGE LEGEND



**DAMMON ENGINEERING, INC.**  
LOUISIANA & MISSISSIPPI

www.dammonengineering.com  
info@dammonengineering.com  
PH: 985.649.9832

Chief Engineer: Brian Mistich, PE  
554 Old Spanish Trail  
Slidell, LA 70468



38229 Manzell Drive Slidell			
PRIOR DEVELOPMENT			
Watertight Surfaces	c(1) =	22,026	sqft = 0.506 Acres
Gravel Surface	c(2) =	18,651	sqft = 0.428 Acres
Green Space	c(3) =	2,406	sqft = 0.064 Acres
Summary	c(3) =	43,485	sqft = 0.998 Acres
POST DEVELOPMENT			
Watertight Surfaces	c(1) =	21,848	sqft = 0.497 Acres
Gravel Surface	c(2) =	8,475	sqft = 0.195 Acres
Green Space	c(3) =	13,362	sqft = 0.307 Acres
Summary	c(3) =	43,485	sqft = 0.998 Acres



**NEW OFFICE / STORAGE**

38229 MANZELLA DRIVE,  
SLIDELL, LOUISIANA

JOB No: 03-17-2025  
DRAWN BY: BAW  
DATE: 03-17-2025  
CHECKED BY: BAW

SHEET TITLE:  
**PROPOSED DRAINAGE AND PAVING PLAN**

DRAWING NUMBER:  
**C100**

SHEET No: 1 of 6