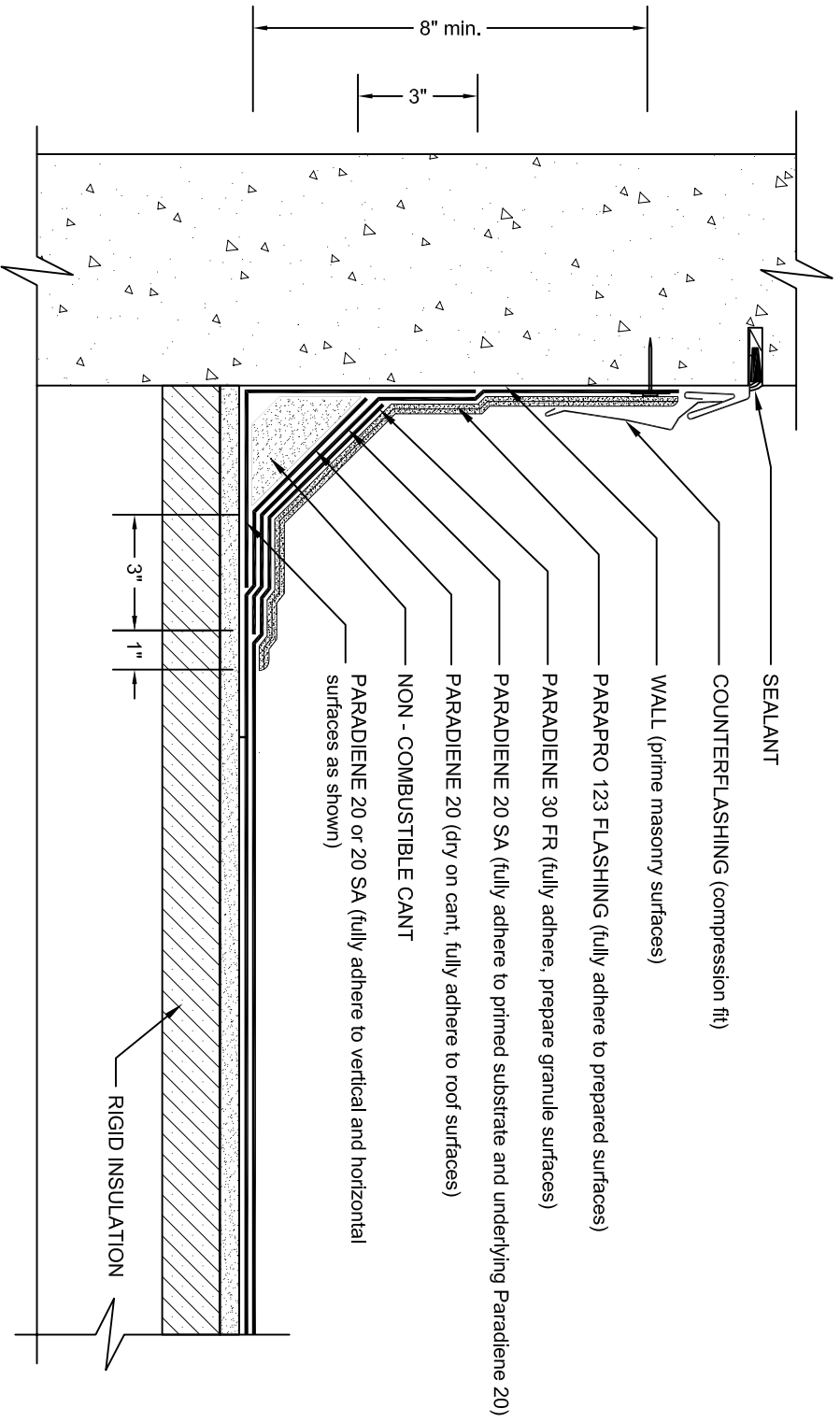


# PARAPET - WALL SUPPORTED DECK WITH PARAPRO FLASHING

## PARADIENE 20/30 FR - RIGID INSULATION



- NOTES:
1. WHERE PRIMER IS INDICATED TO MAINTAIN PROPER ADHESION, TA-119 PRIMER IS REQUIRED FOR ALL PARADIENE 20 SA FLASHING REINFORCING AND STRIPPING PLY APPLICATIONS. USE PA-1126 OR PA-917 LS FOR ALL NON-PARADIENE 20 SA APPLICATIONS. CONTACT SIPLAST FOR SPECIFIC REQUIREMENTS.
  2. A MILLER AND TREATED WOOD CANT MAY BE REQUIRED FOR COMPLIANCE WITH SPECIFIC BUILDING CODES OR APPROVALS.
  3. PARAPRO CANNOT BE APPLIED IN THE ABOVE CONFIGURATION OVER MEMBRANES OR OTHER MATERIALS CONTAINING UNCURED, SOLVENT-BASED MATERIALS. IN SUCH CASES, MEMBRANES TO BE COVERED WITH PARAPRO MUST BE ADHERED WITH SFT ADHESIVE OR PS-304 ELASTOMERIC SEALANT. CONTACT SIPLAST FOR INFORMATION.
  4. REQUIREMENTS AND RECOMMENDATIONS DETAILED IN THE CURRENT SIPLAST SPECIFICATIONS AND PARAPRO INSTALLER'S GUIDE SHALL APPLY IN ADDITION TO THE ABOVE DRAWING.
  5. THE METAL WORK SHOWN DEPICTS SHOP FABRICATION AND JOB-SITE ASSEMBLY. THESE COMPONENTS SHOULD BE DESIGNED/FABRICATED/INSTALLED ACCORDING TO GENERALLY ACCEPTED INDUSTRY PRACTICES, STANDARDS, AND APPROVALS. DISSIMILAR METAL TYPES SUBJECT TO ELECTROLYTIC REACTION SHOULD BE PHYSICALLY SEPARATED.
- CAUTION: SIPLAST RECOMMENDS THAT ALL PRACTICES PERTAINING TO NRCA CERTA GUIDELINES BE FOLLOWED WHEN TORCHING METHODS ARE EMPLOYED. THIS INCLUDES PERFORMING A FIRE WATCH FOLLOWING ANY TORCH APPLICATIONS. ALWAYS HAVE APPROVED FIRE-EXTINGUISHING EQUIPMENT NEARBY.

N.T.S.