

# KOHLER® SERVICE PARTS

## TOILET AND BIDET FITTINGS

K-142  
K-141  
K-6814

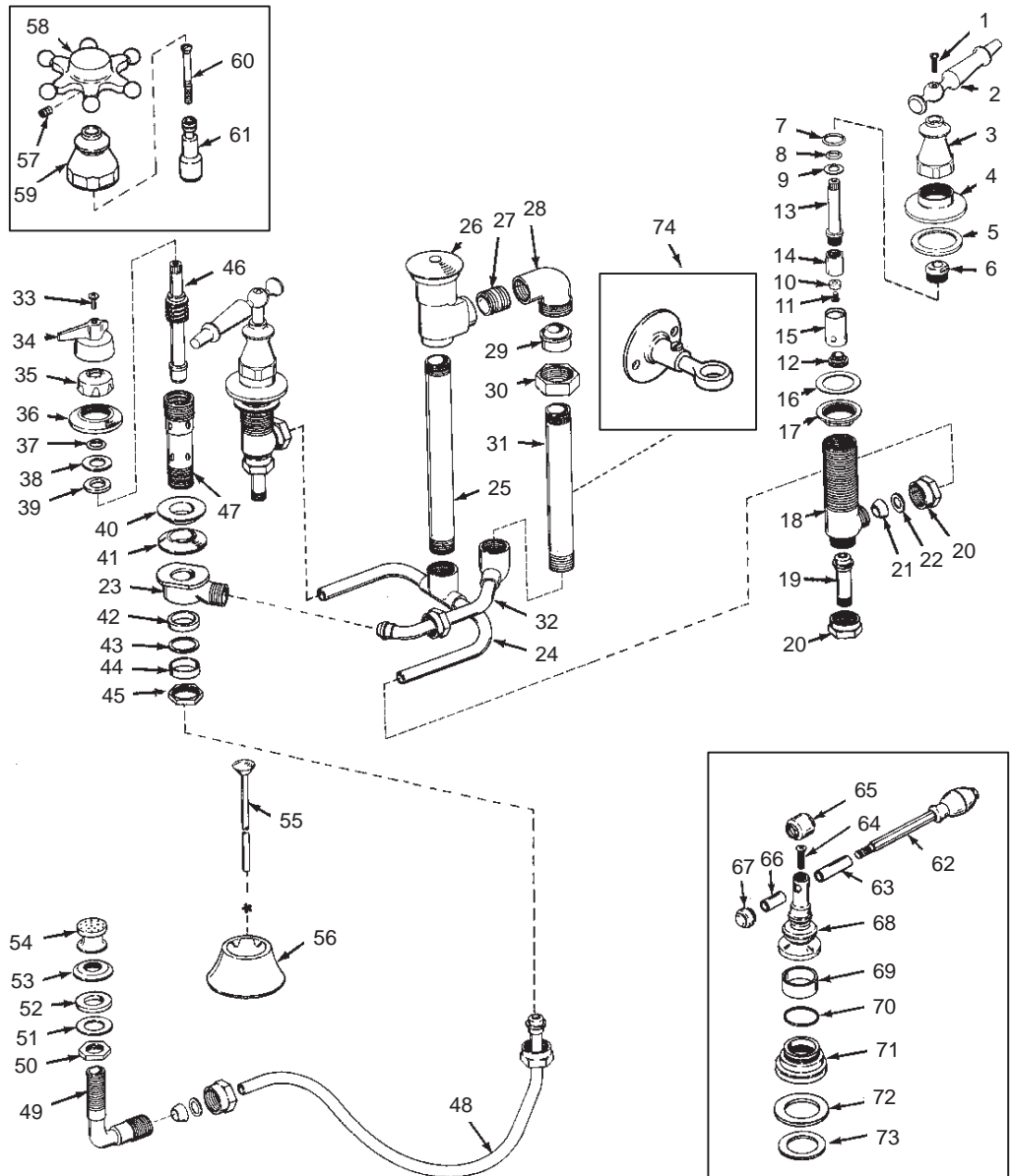
ANTIQUE  
ANTIQUE  
IV GEORGES

BIDET FITTING WITH VACUUM BREAKER  
6 PRONG BIDET FITTING WITH VACUUM BREAKER  
BIDET FITTING WITH VACUUM BREAKER

ORDER BY KIT NUMBER OR PART NUMBER, NOT ITEM NUMBER OR KIT LETTER.

### Ordering Options

Item	Part No. or Kit
1	B
2	K-9630‡■
3	42259‡
4	C
5	M
6	20475
7, 8, 9, 10, 11, 12	A, D or E or N
13, 14, 15	D or E or N
16, 17	F
18	34303
19	32753
20	G
21, 22	I
23	48815
24	34978‡
25	48712‡
26	21286‡
27	29280‡
28	39842‡
29	29571‡
30	24003‡
31	40794‡
32	34981‡
33	H
34	41946‡
35	34465‡
36	34328‡
37, 38, 39, 40, 41	I
42, 43, 44, 45	I
46	34470
47	48797
48	J
49	48801
50, 51, 52	K
53	48805‡
54	48609‡
55	48709‡
56	42924‡
57	50283‡, L or O
58	L or O
59	50266‡
60	50285
61	50267
62	36622‡
63	36640‡
64	B
65	36631‡
66	36639‡
67	36635‡
68	36641‡
69	36638‡
70	41364
71	40054‡
72	P
73	40001
74	29863‡



### NOTES:

\* For pop-up drain, see K-7701

### LEGEND:

‡ Specify Finish.

■ Parts further exploded in catalog; see INDEX.

OVER

# TOILET AND BIDET FITTINGS

K-142	ANTIQUE	BIDET FITTING WITH VACUUM BREAKER
K-141	ANTIQUE	6 PRONG BIDET FITTING WITH VACUUM BREAKER
K-6814	IV GEORGES	BIDET FITTING WITH VACUUM BREAKER

ORDER BY KIT NUMBER OR PART NUMBER, NOT ITEM NUMBER OR KIT LETTER.

## Kit Ordering Information

Kit	Kit Part No.	Kit Name	Kit Contents
A	30294	Valve Service Kit	2 ea., Items 7 thru 12
B	30097‡	Screws	3 ea., Item 1 or 64
C	30078‡	Escutcheons	2 ea., Item 4
D	30128‡	Valve Assembly (Closes Clockwise)	1 ea., Items 7 thru 15
E	30127‡	Valve Assembly (Closes Counterclockwise)	1 ea., Items 7 thru 15
F	30231	Mounting Hardware	2 ea., Items 16 and 17
G	30230	Coupling Nuts	2 ea., Item 20
H	30105‡	Screws	3 ea., Item 33
I	30257	Gaskets	2 ea., Items 21 and 22; 1 ea., Items 37 thru 45
J	48614	Flexible Supply	1 ea., Item 48
K	30258	Washers	1 ea., Items 50, 51 and 52
L	50281‡	Handle (6 Prong w/"Hot" Ceramic Index Button)	1 ea., Items 57 and 58
M	30340	Gaskets	2 ea., Item 5
N	30002	Valve Assembly (Closes Clockwise, Symmetric Handles)	1 ea., Items 7 thru 15
O	50282‡	Handle (6 Prong w/"Cold" Ceramic Index Button)	1 ea., Items 57 and 58
P	30342	Gaskets	3 ea., Item 72

## KITS MAY INCLUDE EXTRA PARTS

### NOTES:

\* For pop-up drain, see K-7701.

### LEGEND:

- ‡ Specify Finish.
- Parts further exploded in catalog; see INDEX.