

Ordering Information

Applicable product:		
Three-hole sink, Right side	K-5881R-3	shown
Four-hole sink, Right side	K-5881R-4	not shown
Three-hole sink, Left side	K-5881L-3	not shown
Four-hole sink, Left side	K-5881L-4	not shown
Accessories/hardware:		
Bottom basin rack	K-6007	optional

Product Information

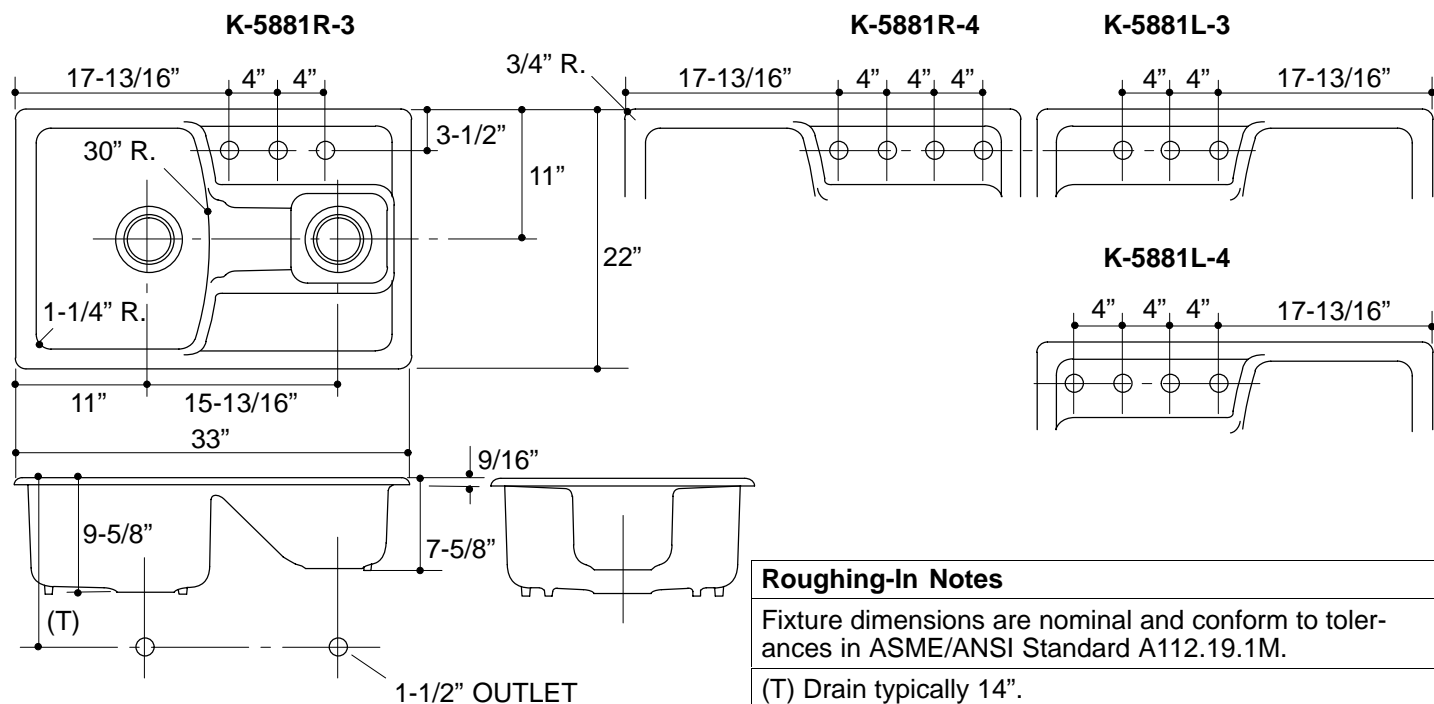
Fixture*:		basin area	water depth
Sink, small		15" x 8"	6"
Sink, large		15" x 19"	8"
Outlet	3-7/8" D.		
Faucet and spout holes	1-3/8" D.		
* Approximate measurements for comparison only.			

Included Components:

Hardwood cutting board	95720
------------------------	-------

Installation Notes

Refer to installation instructions included with fixture before beginning installation.



Roughing-In Notes

Fixture dimensions are nominal and conform to tolerances in ASME/ANSI Standard A112.19.1M.

(T) Drain typically 14".

Cutout 31-3/4" x 20-3/4" with 1" radius corners.