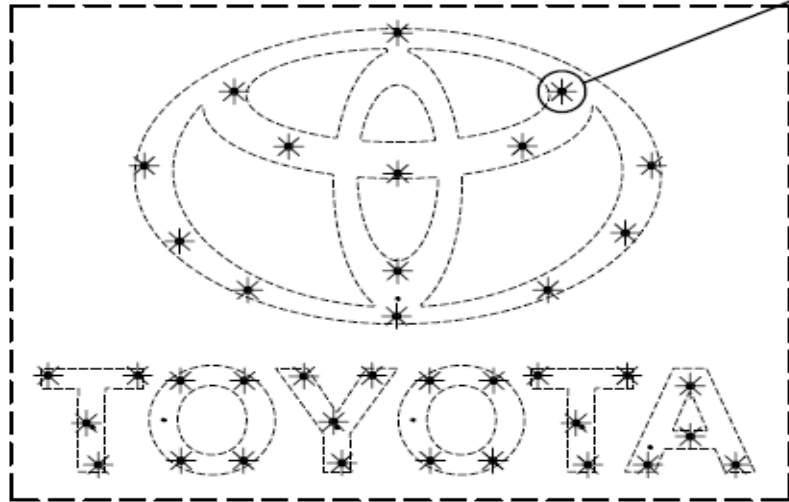


- *This sign is to withstand 141mph wind load.
- *This sign will contain a UL label.
- *This sign will be installed using 3/8" thru-bolts or appropriate sized fasteners as necessary.



ATTACHMENT DETAILS

SEE DETAIL No. 1

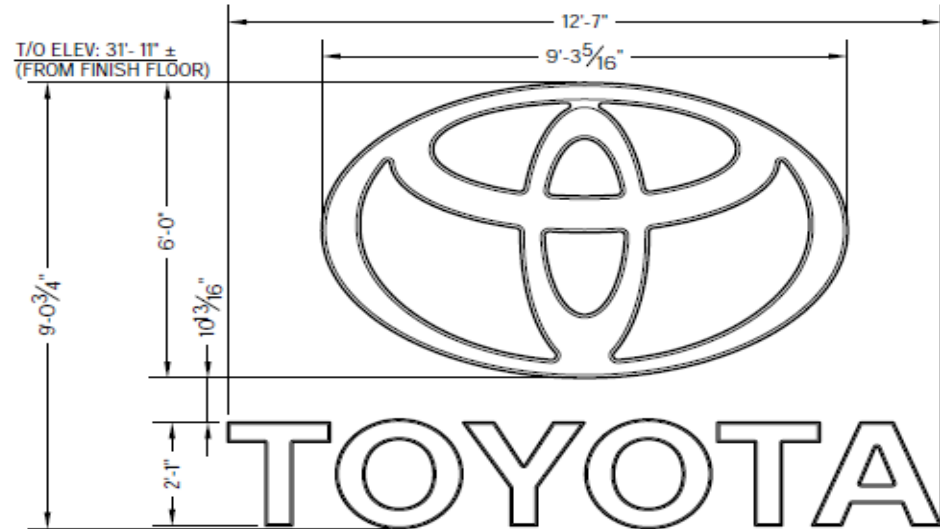
1/2" EXTERIOR PLYWOOD FOR SIGNAGE SUPPORT WITH WOOD BLOCKINGS AS REQUIRED BY BUILDING ENGINEER

EXISTING WALL BY BASE BUILDING ENGINEER

- 4mm ALPOLIC ACM PANEL WALL SYSTEM
- 1/2" EXTERIOR GRADE PLYWOOD FOR SIGNAGE
- EXISTING WALL

NOTE:

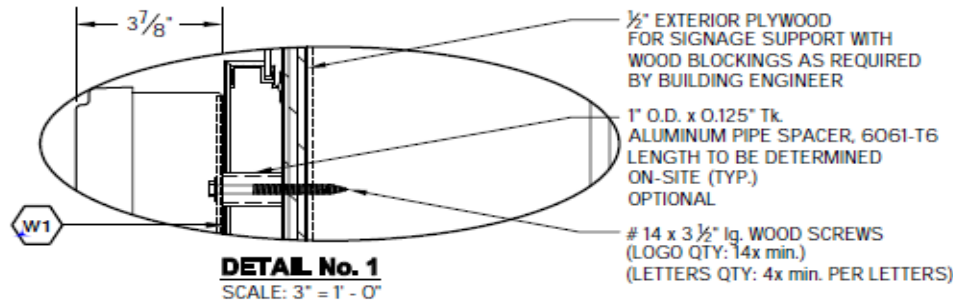
- INSTALLER MUST ASSURE THREADS OF SCREWS ARE FULLY ENGAGED THROUGH 1/2" EXTERIOR GRADE PLYWOOD



82.06 sqft

LOGO WEIGHT: 115 lbs ±
LETTERS WEIGHT: 63 lbs ±
TOTAL WEIGHT: 178 lbs ±

FRONT VIEW



WATER INFILTRATION:

- SEAL TOP OF SIGN (S/F, LETTERS, ETC.) TO PREVENT WATER INFILTRATION. ALL TOP HORIZONTAL AND FIRST FEW INCH OF VERTICAL SECTION.
- SEALED EXPOSED HARDWARE & HOLES FROM PIPE SPACERS ETC.



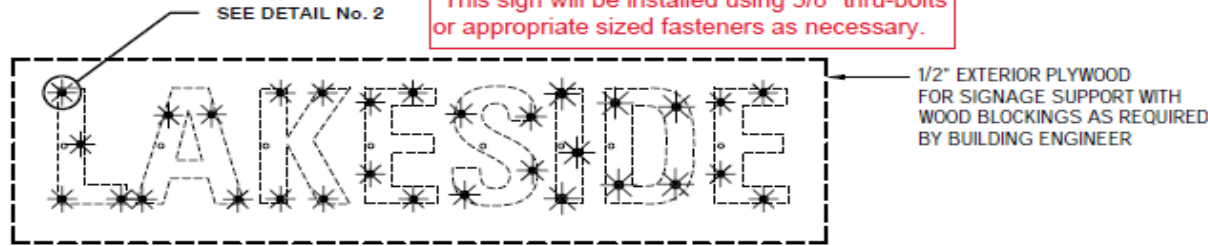
www.pattisonsign.com / toll free (866) 218-1976
© 2018 PATTISON SIGN GROUP. ALL RIGHTS RESERVED. NO PART OF THIS DRAWING MAY BE REPRODUCED IN ANY FORM WITHOUT WRITTEN PERMISSION FROM PATTISON SIGN GROUP.

CUSTOMER:	TOYOTA 17050	CASE:	26696
LOCATION:	3701 N CAUSEWAY BLVD., METAIRIE, LA		
DRAWN BY:	C. LEBLOND	DATE:	11/04/19
CHECKED BY:	L.P.	SCALE:	3/8" = 1'-0"
REFERENCE:	NF2-26696	PAGE:	1 of 5

#	Revision(s)	By:	Date:

UL Label
The sign is intended to be installed in accordance with the requirements of National Electrical Code (NEC) or other applicable code. The sign is intended to be installed in accordance with applicable code. The sign is intended to be installed in accordance with applicable code. The sign is intended to be installed in accordance with applicable code.

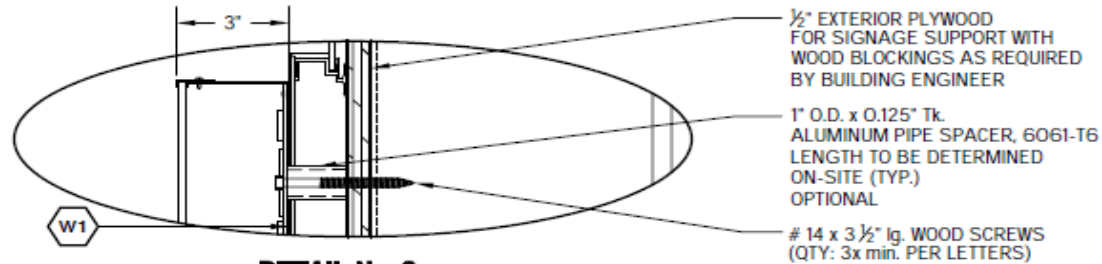
*This sign is to withstand 141mph wind load.
 *This sign will contain a UL label.
 *This sign will be installed using 3/8" thru-bolts or appropriate sized fasteners as necessary.



ATTACHMENT DETAIL

EXISTING WALL BY BASE BUILDING ENGINEER

- 4mm ALPOLIC ACM PANEL WALL SYSTEM
- 1/2" EXTERIOR GRADE PLYWOOD FOR SIGNAGE
- EXISTING WALL



DETAIL No. 2
 SCALE: 3" = 1' - 0"



FRONT VIEW

WEIGHT: 48 LBS ±

16.94 sqft

WATER INFILTRATION:

- SEAL TOP OF SIGN (S/F, LETTERS, ETC.) TO PREVENT WATER INFILTRATION. ALL TOP HORIZONTAL AND FIRST FEW INCH OF VERTICAL SECTION.
- SEALED EXPOSED HARDWARE & HOLES FROM PIPE SPACERS ETC.

DAMMON
 ENGINEERING, INC.

LOUISIANA & MISSISSIPPI
 Signal, Louisiana
 PO 905-649-5352 Fax: 905-641-9550 www.dammonengineering.com info@dammonengineering.com

Pattison Sign Group
 Powering Your Brand

www.pattisonsign.com / toll free (866) 218-1976

© 2018 PATTISON SIGN GROUP. ALL RIGHTS RESERVED. NO PART OF THIS DRAWING MAY BE REPRODUCED IN ANY FORM WITHOUT WRITTEN PERMISSION FROM PATTISON SIGN GROUP.

CUSTOMER:	TOYOTA 17050	CASE:	26696
LOCATION:	3701 N CAUSEWAY BLVD., METAIRIE, LA		
DRAWN BY:	C. LEBLOND	DATE:	11/04/19
CHECKED BY:	L.P.	SCALE:	1/2" = 1'-0"
REFERENCE:	NF2-26696	PAGE:	2 of 5

#	Revision(s)	By:	Date:

UL The sign is intended to be installed in accordance with the requirements of National Electrical Code (NEC) or other local code. The sign shall be installed in accordance with the requirements of the manufacturer's instructions. The sign shall be installed in accordance with the requirements of the manufacturer's instructions. The sign shall be installed in accordance with the requirements of the manufacturer's instructions.

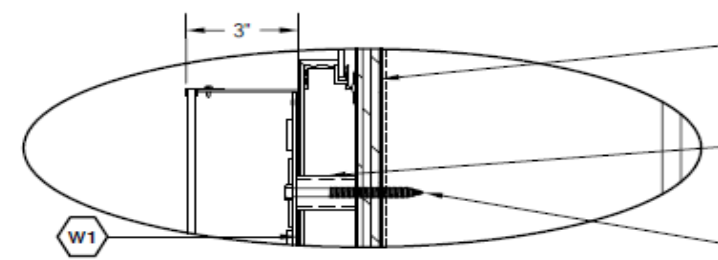
*This sign is to withstand 141mph wind load.
 *This sign will contain a UL label.
 *This sign will be installed using 3/8" thru-bolts or appropriate sized fasteners as necessary.

- EXISTING WALL
 BY BASE BUILDING ENGINEER
- 4mm ALPOLIC ACM PANEL WALL SYSTEM
 - 1/2" EXTERIOR GRADE PLYWOOD FOR SIGNAGE
 - EXISTING WALL



ATTACHMENT DETAIL

1/2" EXTERIOR PLYWOOD FOR SIGNAGE SUPPORT WITH WOOD BLOCKINGS AS REQUIRED BY BUILDING ENGINEER



DETAIL No. 4
 SCALE: 3" = 1' - 0"

- 1/2" EXTERIOR PLYWOOD FOR SIGNAGE SUPPORT WITH WOOD BLOCKINGS AS REQUIRED BY BUILDING ENGINEER
- 1" O.D. x 0.125" Tk. ALUMINUM PIPE SPACER, 6061-T6 LENGTH TO BE DETERMINED ON-SITE (TYP.)
- # 14 x 3 1/2" Lg. WOOD SCREWS (QTY: 3x min. PER LETTERS)

ATTACHMENT DETAILS

INSTALLATION:	<input type="checkbox"/> INTERIOR	<input checked="" type="checkbox"/> EXTERIOR
ELECTRICAL SPECIFICATIONS:	WEIGHT: ----	
VOLTS: ----	AMP: ----	CIRC: ----

DESIGN LOADS

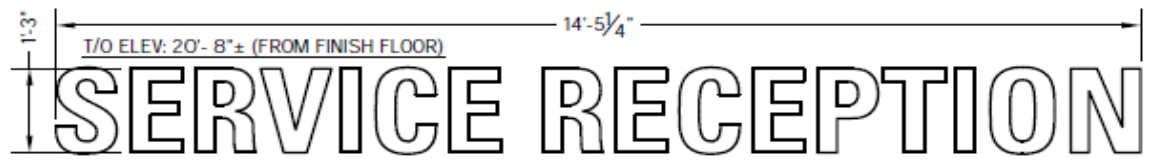
BUILDING CODE: IBC-2015	EXPOSURE C.
REFERENCE LOCATION: METAIRIE, LA	
WIND LOAD = 39.522 PSF	WIND SPEED = 141 MPH

ITEMS TO BE SHIPPED

DESCRIPTION	TOTAL QTY
# 14 x 3 1/2" Lg. WOOD SCREWS	64
---	---

WALL CONSTRUCTION DEPICTED IS AS REPORTED BY CLIENT. SHOULD FIELD CONDITIONS VARY FROM WHAT IS SHOWN, INSTALLER SHALL CONTACT PATTISON SIGN GROUP FOR DIRECTION.

Wall Sign Attachments
 Sign attachment design is normally calculated based on detailed wall section drawings. Failure to provide accurate wall section and other building design details may cause additional installation cost. Pattison Sign Group will not take any responsibility for inaccurate information provided.



FRONT VIEW

18.05 sqft

WEIGHT: 71 LBS ±

WATER INFILTRATION:

- SEAL TOP OF SIGN (S/F, LETTERS, ETC.) TO PREVENT WATER INFILTRATION. ALL TOP HORIZONTAL AND FIRST FEW INCH OF VERTICAL SECTION.
- SEALED EXPOSED HARDWARE & HOLES FROM PIPE SPACERS ETC.



www.pattisonsign.com / toll free (866) 218-1976
 © 2018 PATTISON SIGN GROUP. ALL RIGHTS RESERVED. NO PART OF THIS DRAWING MAY BE REPRODUCED IN ANY FORM WITHOUT WRITTEN PERMISSION FROM PATTISON SIGN GROUP.

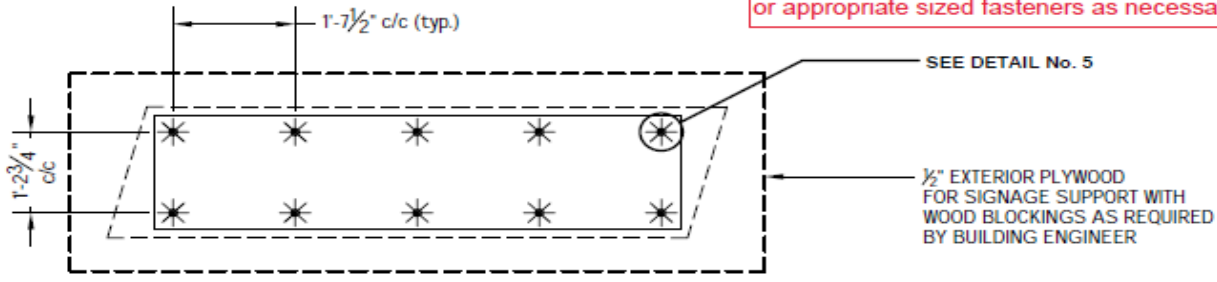
Description of change	??	##/##/##	By:	Date:
# Revision(s)				

UL **W1**

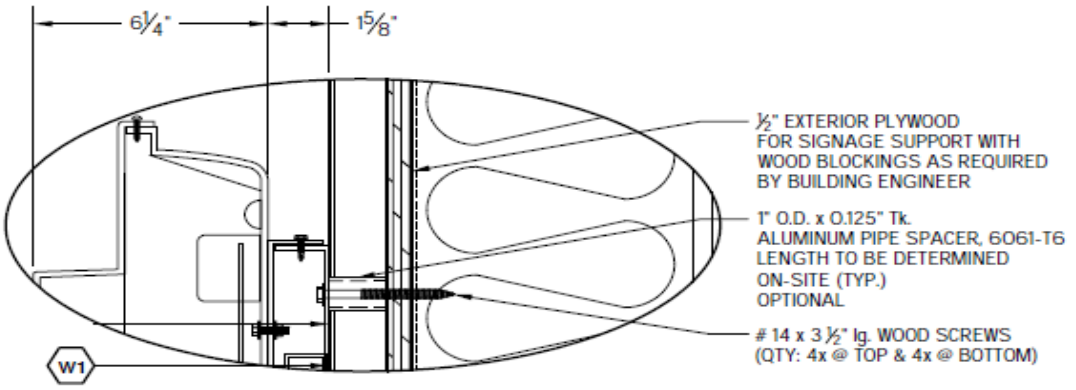
The sign is intended to be installed in accordance with the applicable code requirements of the local jurisdiction. The sign shall be installed in accordance with the applicable code requirements of the local jurisdiction. The sign shall be installed in accordance with the applicable code requirements of the local jurisdiction.

CUSTOMER:	TOYOTA 17050	CASE:	26696
LOCATION:	3701 N CAUSEWAY BLVD., METAIRIE, LA		
DRAWN BY:	C.LEBLOND	DATE:	11/04/19
CHECKED BY:	L.P.	SCALE:	1/2" = 1'-0
REFERENCE:	NF2-26696	PAGE:	4 of 5

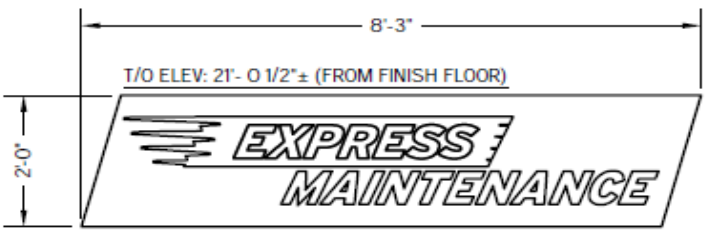
*This sign is to withstand 141mph wind load.
 *This sign will contain a UL label.
 *This sign will be installed using 3/8" thru-bolts or appropriate sized fasteners as necessary.



ATTACHMENT DETAIL



DETAIL No. 5
 SCALE: 3" = 1' - 0"



WEIGHT: 80 lbs ±

16.5 sqft

FRONT VIEW

EXISTING WALL BY BASE BUILDING ENGINEER

- 4mm ALPOLIC ACM PANEL WALL SYSTEM
- 1/2" EXTERIOR GRADE PLYWOOD FOR SIGNAGE
- EXISTING WALL

NF2-26696-1

ATTACHMENT DETAILS

INSTALLATION:	- INTERIOR	X EXTERIOR
ELECTRICAL SPECIFICATIONS:	WEIGHT:	---
VOLTS: ---	AMP: ---	CIRC: ---

DESIGN LOADS

BUILDING CODE: IBC-2015	EXPOSURE C.
REFERENCE LOCATION: METAIRIE, LA	
WIND LOAD = 39.522 PSF	WIND SPEED = 141 MPH

ITEMS TO BE SHIPPED

DESCRIPTION	TOTAL QT
# 14 x 3 1/2" lg. WOOD SCREWS	10
---	---

WALL CONSTRUCTION DEPICTED IS AS REPORT BY CLIENT. SHOULD FIELD CONDITIONS VARY FROM WHAT IS SHOWN, INSTALLER SHALL CONTACT PATTISON SIGN GROUP FOR DIRECTION

Wall Sign Attachments
 Sign attachment design is normally calculate based on detailed wall section drawings. Failure to provide accurate wall section and other building design details may cause additional installation cost. Pattison Sign Group will not take any responsibility for inaccurate information provided.

WATER INFILTRATION:

- SEAL TOP OF SIGN (S/F, LETTERS, ETC.) TO PREVENT WATER INFILTRATION. ALL TOP HORIZONTAL AND FIRST FEW INCH OF VERTICAL SECTION.
- SEALED EXPOSED HARDWARE & HOLES FROM PIPE SPACERS ETC.

DAMMON
 ENGINEERING, INC.
 LOUISIANA & MISSISSIPPI
 Slidell, Louisiana 70669
 PO: 985-640-0358 Fax: 985-641-5950
 www.dammonengineering.com
 info@dammonengineering.com

Pattison Sign Group
 Powering Your Brand

CUSTOMER:	TOYOTA 17050	CASE:	26696
LOCATION:	3701 N CAUSEWAY BLVD., METAIRIE, LA		
DRAWN BY:	C. LEBLOND	DATE:	11/04/19
CHECKED BY:	L.P.	SCALE:	1/2" = 1'-0
REFERENCE:	NF2-26696	PAGE:	5 of 5

#	Description of change	??	###/###/###	By:	Date:

The sign is intended to be installed in accordance with the requirements of National Electrical Code (NEC) or other applicable codes and standards. The sign is intended to be installed in accordance with the requirements of the International Building Code (IBC) and other applicable codes and standards. The sign is intended to be installed in accordance with the requirements of the International Building Code (IBC) and other applicable codes and standards.