

GENERAL ELECTRIC POWER NOTES

1. ALL WORK SHALL CONFORM TO THE LATEST EDITION OF THE NATIONAL ELECTRICAL CODE, THE GOVERNING ELECTRICAL CODE AND ALL OTHER INSPECTION DEPARTMENTS HAVING JURISDICTION. OBTAIN CERTIFICATES OR APPROVAL WHERE REQUIRED. ELECTRICAL CONTRACTOR SHALL VERIFY ALL WIRE AND CONDUIT SIZES FOR MECHANICAL EQUIPMENT TO BE INSTALLED.
2. ALL MATERIALS FURNISHED SHALL BE NEW AND SHALL BE U.L. LISTED.
3. THE DRAWINGS INDICATE SIZE AND GENERAL LOCATION OF WORK. SCALE DIMENSIONS SHALL NOT BE USED. THE EXACT LOCATION OF ALL LIGHTING FIXTURES, RECEPTACLES AND TELEPHONE OUTLETS, ETC. SHALL BE DETERMINED BY ACTUAL CONDITIONS IN THE FIELD.
4. PRIOR TO BIDDING, CONTRACTOR SHALL VISIT THE JOB SITE AND FAMILIARIZE THEMSELVES WITH THE EXISTING CONDITIONS.
5. ELECTRICAL CONTRACTOR SHALL COORDINATE HIS WORK WITH OTHER TRADES AND WITH OTHER CONTRACTORS WHOSE WORK MAY AFFECT THIS INSTALLATION.
6. ELECTRICAL CONTRACTOR SHALL COORDINATE INCOMING ELECTRICAL SERVICE WITH UTILITY COMPANY AND INCLUDE IN HIS BID ALL CHARGES AND FEES INCURRED IN MODIFICATIONS.
7. ELECTRICAL CONTRACTOR SHALL COORDINATE THE TELEPHONE INSTALLATION WITH THE TELEPHONE COMPANY AND THE GENERAL CONTRACTOR.
8. WHERE MORE THAN ONE SWITCH OCCURS IN THE SAME LOCATION, THEY SHALL BE INSTALLED IN A GANG TYPE BOX UNDER ONE COVER PLATE.
9. ELECTRICAL CONTRACTOR, BEFORE INSTALLING ANY OF THE WORK, SHALL SEE THAT IT DOES NOT INTERFERE WITH CLEARANCES REQUIRED FOR FINISHED CEILINGS, PLASTER, PARTITIONS, WALLS, ETC. AS SHOWN IN THE ARCHITECTURAL DRAWINGS AND DETAILS. IF ANY WORK IS INSTALLED AND IT LATER DEVELOPS THAT SUCH DETAILS OR DESIGN CANNOT BE FOLLOWED, THE CONTRACTOR, AT HIS OWN EXPENSE, SHALL MAKE SUCH CHANGES IN THE WORK AS DIRECTED BY THE ARCHITECT, AS WELL AS TO PERMIT THE INSTALLATION OF THE ARCHITECTURAL WORK AS SHOWN ON THE PLANS AND DETAILS.
10. PERFORM TEST REQUIRED BY THE OWNER OR THE ENGINEER IN CONNECTION WITH THE OPERATION OF THE ELECTRICAL SYSTEM IN THE BUILDING. ALL TESTS SHALL BE MADE IN ACCORDANCE WITH THE LATEST STANDARD OF THE IEEE AND THE NATIONAL ELECTRICAL CODE.
11. MINIMUM CONDUCTOR SIZE SHALL BE #12, 600V INSULATION. MINIMUM SIZE CONDUIT SHALL BE 3/4" ELECTRICAL METALLIC TUBING (EMT) FOR INTERIOR USE, AND 3/4" RIGID ALUMINUM FOR EXTERIOR USE. USE NON-METALLIC CABLE (NMC) CABLE COPPER FOR LIGHTS AND RECEPTACLE CIRCUITS IN WOOD FRAME CONSTRUCTION AREAS ONLY; IN STEEL FRAMING AREAS THE USE OF EMT (MINIMUM) IS REQUIRED. EXTERIOR FITTINGS SHALL BE CAST BOXES AND COVERS. INTERIOR FITTINGS SHALL BE STAMPED BOXES.
12. CONTRACTOR SHALL INSTALL WIRING AND OTHER CIRCUIT COMPONENTS TO MATCH EQUIPMENT ACTUALLY INSTALLED.
13. INSTALL GROUND FAULT RECEPTACLES AT RECEPTACLE LOCATIONS WITHIN 5' OF SINKS OR LAVATORIES, AND AT EXTERIOR LOCATIONS. EXTERIOR RECEPTACLES SHALL ALSO BE WATERPROOF.
14. BONDING AND GROUNDING SHALL BE IN ACCORDANCE WITH NFPA 70-250-63, NFPA 70-250-23, 250-11 & 250-12.
15. GROUND NEUTRAL IN ACCORDANCE WITH NFPA 70-250-23b.
16. FUSES SHALL BE ITC CLASS K5, 250 VOLT, 200,000 AMP INTERRUPTING CAP.
17. PROVIDE SERVICES OF A FIRE/SMOKE DETECTION AND ALARM COMPANY TO DESIGN AND INSTALL ALARM SYSTEM TO MEET REQUIREMENTS OF THE STATE FIRE MARSHALL AND THE FIRE DISTRICT.
18. EXTERIOR LIGHTING SHALL BE SHADED OR INWARDLY DIRECTED IN SUCH A MANNER SO THAT NO DIRECT LIGHTING OR GLARE IS CAST BEYOND THE PROPERTY LINE. THE INTENSITY OF SUCH LIGHTING SHALL NOT EXCEED ONE FOOT CANDLE AS MEASURED AT THE ADJUTING PROPERTY LINE.
19. ALL ELECTRICAL, MECHANICAL AND PLUMBING PENETRATING FIRE PARTITIONS SHALL BE FIRE CAULKED. (PENETRATIONS THROUGH RATED CONSTRUCTION SHALL BE SEALED WITH A MATERIAL CAPABLE OF PREVENTING THE PASSAGE OF FLAMES AND HOT GASES WHEN TESTED IN ACCORDANCE WITH ASTM-E814.)
20. VERIFY ELECTRICAL CONNECTIONS PER MANUFACTURER'S RECOMMENDATIONS.
21. ALL RECEPTACLES AND SWITCHES ARE TO HAVE WEATHER PROOF COVERS IN APPARATUS BAY. 50% OF ALL EXTERIOR WEATHER PROOF COVERS SHALL BE IN-USE COVERS.
22. ALL 120-VOLT, SINGLE PHASE, 15- AND 20-AMPERE BRANCH CIRCUITS SUPPLYING OUTLETS INSTALLED IN DWELLING UNIT FAMILY ROOMS, DINING ROOMS, LIVING ROOMS, PARLORS, LIBRARIES, DENS, BEDROOMS, SUNROOMS, RECREATION ROOMS, CLOSETS, HALLWAYS, OR SIMILAR ROOMS OR AREAS SHALL BE PROTECTED BY A LISTED ARC-FAULT CIRCUIT INTERRUPTER, COMBINATION-TYPE, INSTALLED TO PROVIDE PROTECTION OF THE BRANCH CIRCUIT. INSTALL EITHER AN AFCI CIRCUIT BREAKER INSTALLED FOR THE PORTION OF THE BRANCH CIRCUIT BETWEEN THE BRANCH CIRCUIT OVERCURRENT DEVICE AND THE FIRST OUTLET. IT SHALL BE PERMITTED TO INSTALL A COMBINATION AFCI AT THE FIRST OUTLET TO PROVIDE PROTECTION FOR THE REMAINING PORTION OF THE BRANCH CIRCUIT.

DAMMON ENGINEERING, INC.
LOUISIANA & MISSISSIPPI

Chief Engineer: Brian Mairch, PE
554 Old Spanish Trail
Slidell, LA 70568
www.dammonengineering.com
info@dammonengineering.com
PH: 985.649.5832 F: 985.641.5650

#	DESCRIPTION	DATE

SEAL:

PRELIMINARY NOT FOR CONSTRUCTION

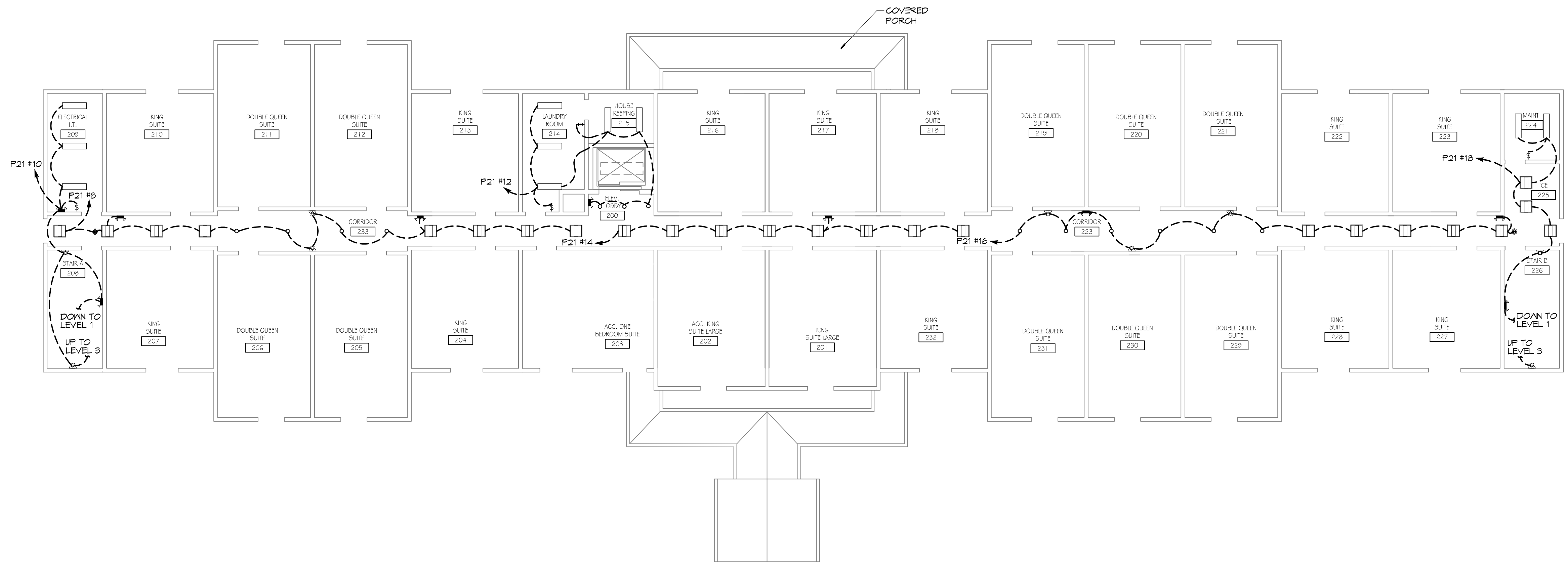
MAIN STAY SUITES

100 MAIN STREET
LOT #14 HWY 21
MOOREHEAD, LA 70645
JOB No: 2265 DATE: FEBRUARY, 2016
DRAWN BY: JTL CHECKED BY: CKD

SHEET TITLE:
LIGHTING PLANS - LEVEL 1, 2, & 3

DRAWING NUMBER:

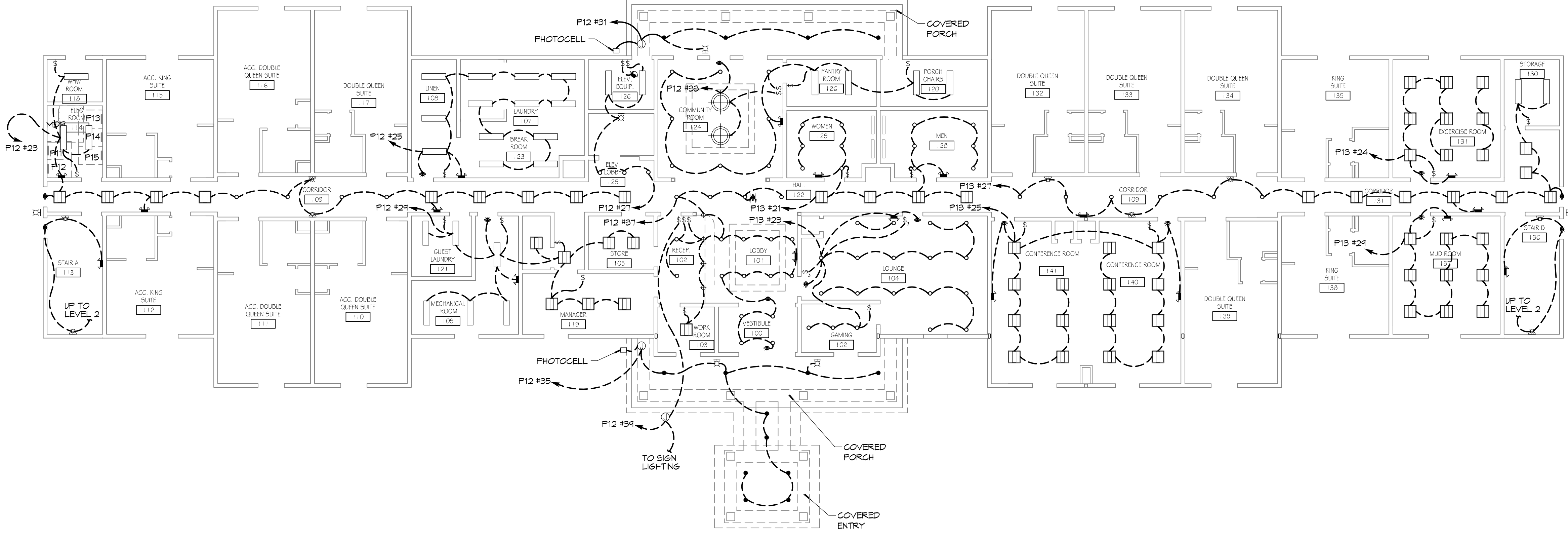
E101



2 LIGHTING PLAN - LEVELS 2 & 3
SCALE: 3/32" = 1'-0"

NOTE: THIS PLAN SHOWS LEVEL 2 LIGHTING AND CIRCUITS. LEVEL 3 IS IDENTICAL TO LEVEL 2 EXCEPT ROOM NUMBERS AND CIRCUIT NUMBERS WILL BEGIN WITH "3".

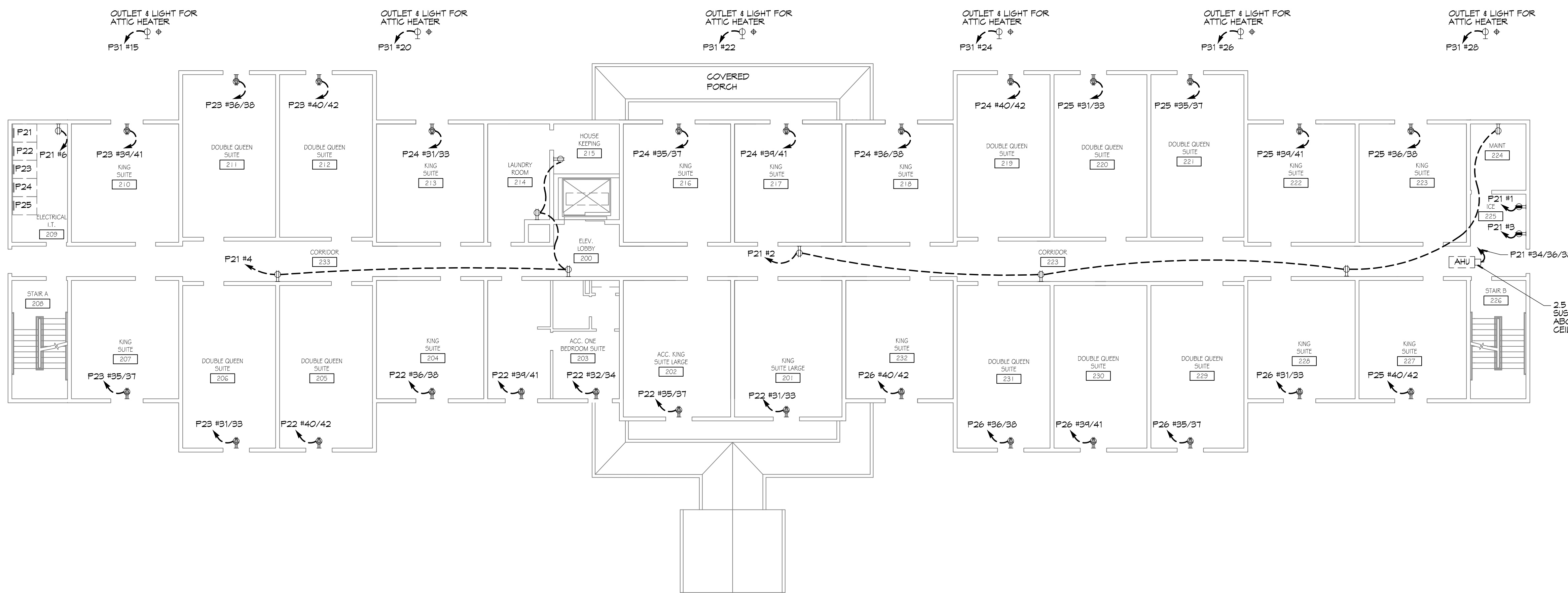
25 GUESTROOMS EACH FLOOR



1 LIGHTING PLAN - LEVEL 1
SCALE: 3/32" = 1'-0"

12 GUESTROOMS

FILE NAME: A:\Projects\2016\MainStay Suites\2016 MainStay Suites\2016 MainStay Suites.dwg
 PLOT DATE: 02/20/2016 10:08:11 AM
 PLOT BY: JTL
 PLOT SCALE: 1/8" = 1'-0"
 PLOT AREA: 11.00 x 17.00
 PLOT ORIGIN: 11.00, 17.00



2 POWER PLAN - LEVELS 2 & 3
 SCALE: 3/32" = 1'-0"

NOTE: THIS PLAN SHOWS LEVEL 2 POWER AND CIRCUITS. LEVEL 3 IS IDENTICAL TO LEVEL 2 EXCEPT ROOM NUMBERS AND CIRCUIT NUMBERS WILL BEGIN WITH "3".

25 GUESTROOMS EACH FLOOR

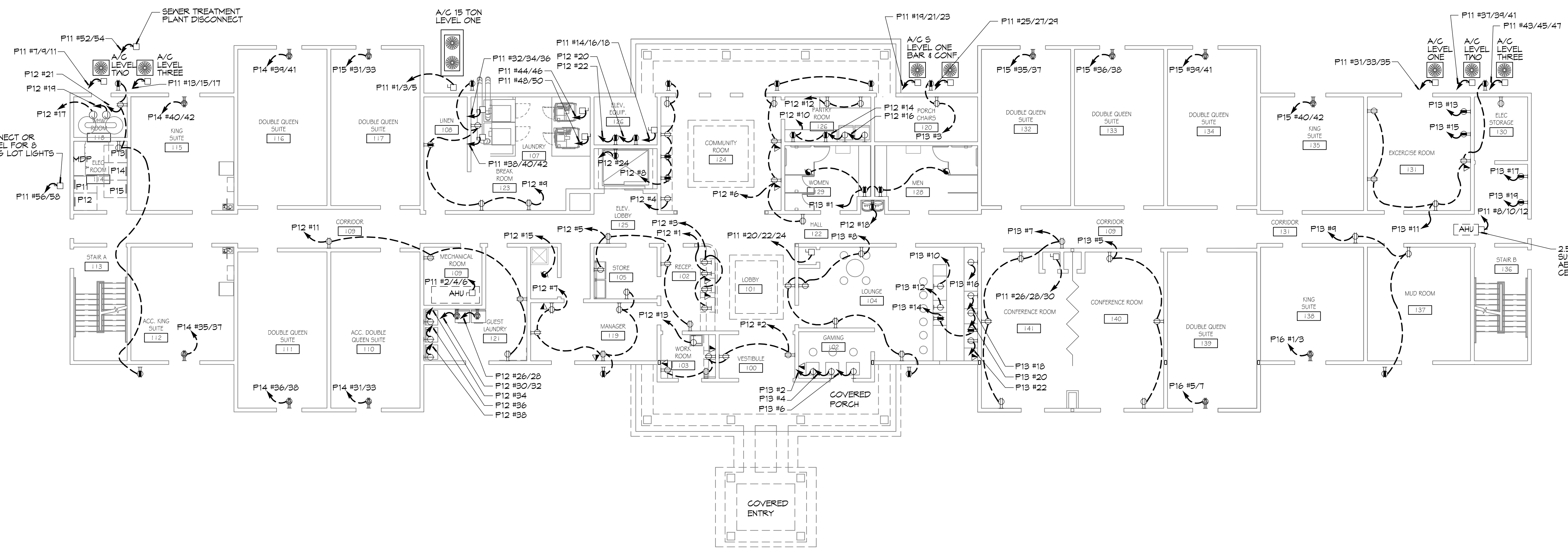
ELECTRICAL LEGEND - POWER

- SYMB
- ⊕ STANDARD 120V DUPLEX RECEPTACLE, NEMA 5-2 OR 18" AFF (UNLESS OTHERWISE NOTED)
 - ⊖ SINGLE-POLE DEDICATED RECEPTACLE - REFER TO PANEL SCHEDULE FOR CIRCUIT SIZE
 - ⊕ GFCI DUPLEX RECEPTACLE
 - ⊕ GFCI QUAD RECEPTACLE
 - ⊕ 208V DEDICATED RECEPTACLE
 - ⊕ 220V DEDICATED GFCI RECEPTACLE
 - ⊕ WEATHER-PROOF GFCI DUPLEX RECEPTACLE MOUNTED AT 30" AFF (UNLESS OTHERWISE NOTED)
 - ⊕ STANDARD 120V DUPLEX RECEPTACLE - FLOOR MOUNTED
 - ⊕ STANDARD QUAD RECEPTACLE - WALL-MOUNTED
 - ⊕ STANDARD QUAD RECEPTACLE - FLOOR MOUNTED
 - ⊕ 125V 15 AMP DUPLEX-USB 5VDC 3 AMP HUBBELL USB CHARGER RECEPTACLE
 - ⊕ 125V 15 AMP QUADPLEX-USB 5VDC 3 AMP HUBBELL USB CHARGER RECEPTACLE
 - ⊕ JUNCTION BOX
 - ⊕ GENERATOR BATTERY CHARGER 6FI OUTLET
 - ⊕ 2-BUTTON PUSH BUTTON STATION
 - ⊕ COAX-CABLE CONNECTION FOR TELEVISION
 - ⊕ WALL MOUNTED DATA OUTLET
 - ⊕ FLOOR DATA OUTLET
 - ⊕ POWER DISCONNECT
 - ⊕ GAS WATER HEATER ON DECK OR MEZZANINE ABOVE - SIZE AS NOTED ON PLAN
 - ⊕ AIR CONDITIONING AIR HANDLING UNIT ON DECK OR MEZZANINE ABOVE, SEE MECHANICAL DRAWINGS
 - ⊕ AIR CONDITIONING CONDENSER UNIT ON CONCRETE PAD, SEE MECHANICAL DRAWINGS

- NOTES:
1. CONNECT ALL EMERGENCY/EXIT LIGHT FIXTURES TO NEAREST CONSTANT POWER SOURCE.
 2. THE #2 NEXT TO A RECEPTACLE OR DATA OUTLET DESIGNATES THAT THERE ARE TO BE TWO OUTLETS AT THAT LOCATION. ONE OVER THE OTHER (ONE HIGH & ONE LOW ON WALL). EXAMPLE: #2 OR #2
 3. REFER TO INTERIOR ELEVATIONS FOR MOUNTING HEIGHT AND ORIENTATION OF OUTLETS MOUNTED ABOVE COUNTERTOPS.
 4. ALL OUTLETS IN SUITES SHALL BE ARC FAULT.

ELECTRICAL LEGEND - LIGHTING

- ⊕ EMERGENCY LIGHT FIXTURE
- ⊕ EXIT LIGHT FIXTURE - WALL MOUNTED
- ⊕ EXIT LIGHT FIXTURE - CEILING MOUNTED
- ⊕ CEILING FAN
- ⊕ CLNG MTD FLUOR STRIP FIXTURE
- ⊕ RECESSED CEILING LIGHT FIXTURE
- ⊕ CLNG HUNG FLUOR STRIP FIXTURE
- ⊕ SURFACE MOUNTED LIGHT FIXTURE
- ⊕ WALL MOUNTED LIGHT FIXTURE
- ⊕ CLNG MTD FLUOR FIXTURE
- ⊕ OUTDOOR LIGHT ON PHOTO TIMER - MTD IN GROUND
- ⊕ PENDANT LIGHT FIXTURE
- ⊕ EXHAUST FAN - SEE MECH
- ⊕ ELECTRIC PANEL BOARD
- ⊕ CIRCUIT HOME RUN
- ⊕ WALL MTD SPEAKER - PROVIDE RATED HOUSING FOR RATED WALLS WHERE INDICATED
- ⊕ CLNG MTD SPEAKER - PROVIDE RATED HOUSING FOR RATED CEILING WHERE INDICATED
- * EXTEND TO FIXTURE(S) NOT SHOWN - SEE NOTE
- ⊕ LIGHT SWITCH 120V COMMERCIAL GRADE
- ⊕ LIGHT SWITCH - 3-WAY 120V COMMERCIAL GRADE
- ⊕ LIGHT SWITCH - DIMMER 120V COMMERCIAL GRADE
- ⊕ PROVIDED BY MC.



1 POWER PLAN - LEVEL 1
 SCALE: 3/32" = 1'-0"

12 GUESTROOMS

DAMMON ENGINEERING, INC.
 LOUISIANA & MISSISSIPPI
 Chief Engineer: Brian March, PE
 554 Old Spanish Trail
 Slidell, LA 70588
 www.dammonengineering.com
 info@dammonengineering.com
 PH: 985.849.5832 F: 985.841.9550

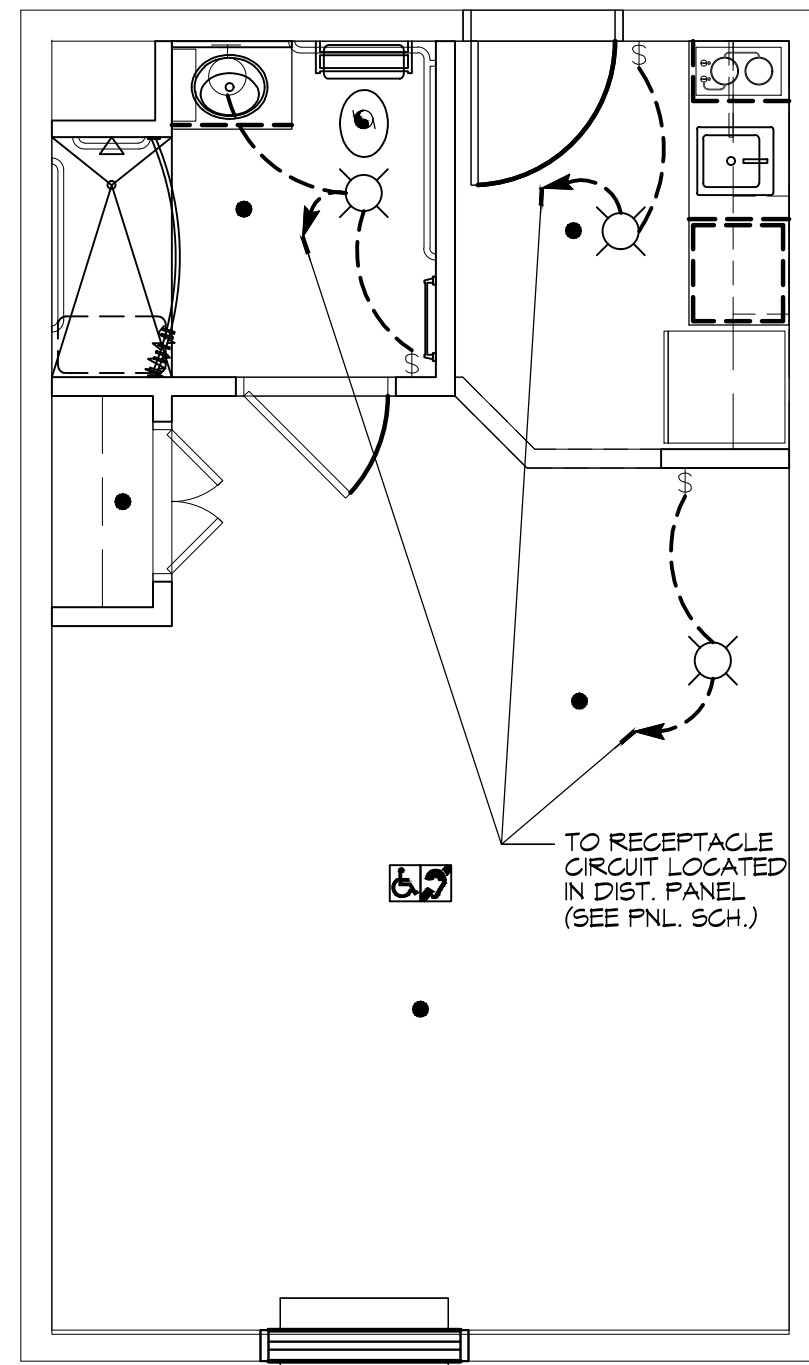
#	DESCRIPTION	DATE

PRELIMINARY NOT FOR CONSTRUCTION

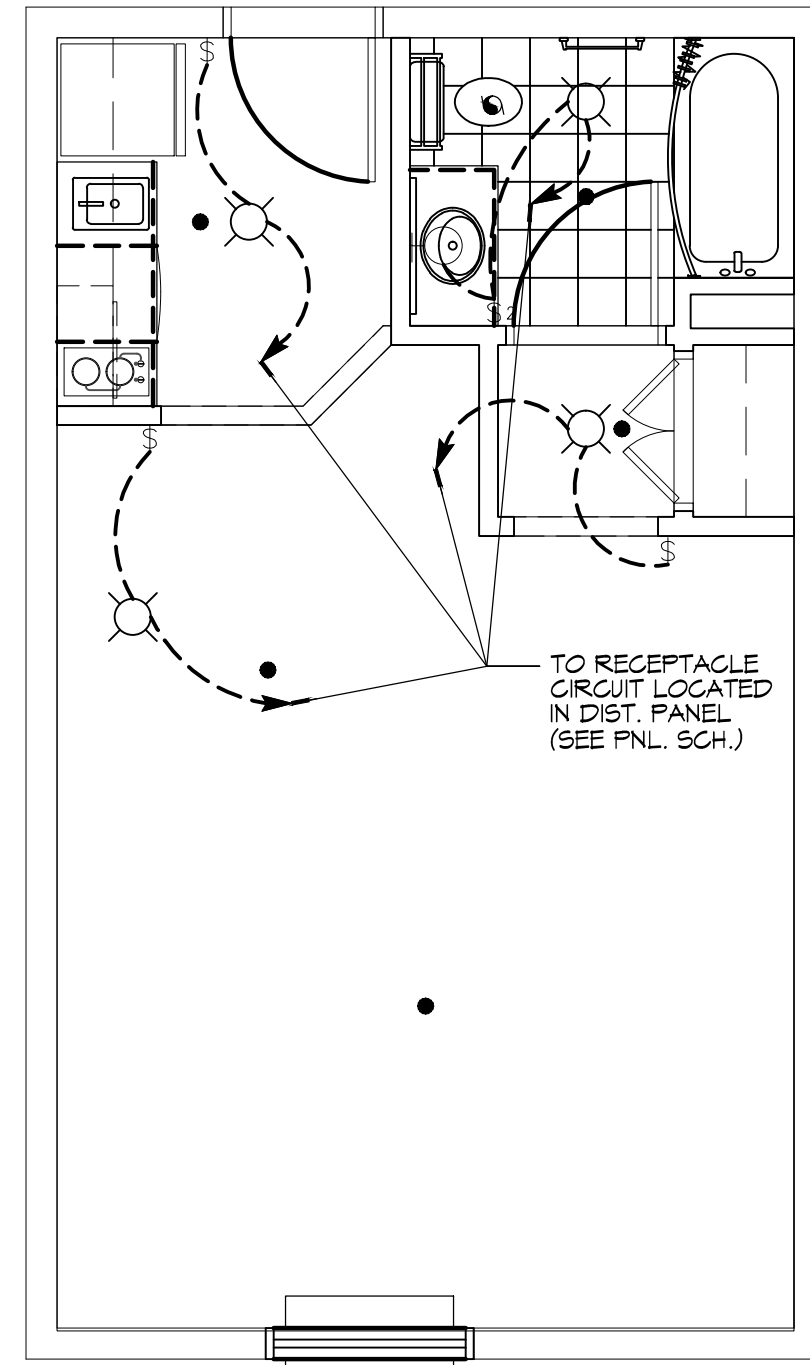
MAINSTAY SUITES
 100 MAIN STREET
 LOT #14 HWY 21
 MOOREHEAD, LA 70564
 JOB No: 2265
 DATE: FEBRUARY, 2016
 DRAWN BY: JTL
 CHECKED BY: CKD

SHEET TITLE:
POWER PLANS - LEVEL 1, 2, & 3
 DRAWING NUMBER:
E102
 SHEET No: 10 of 10

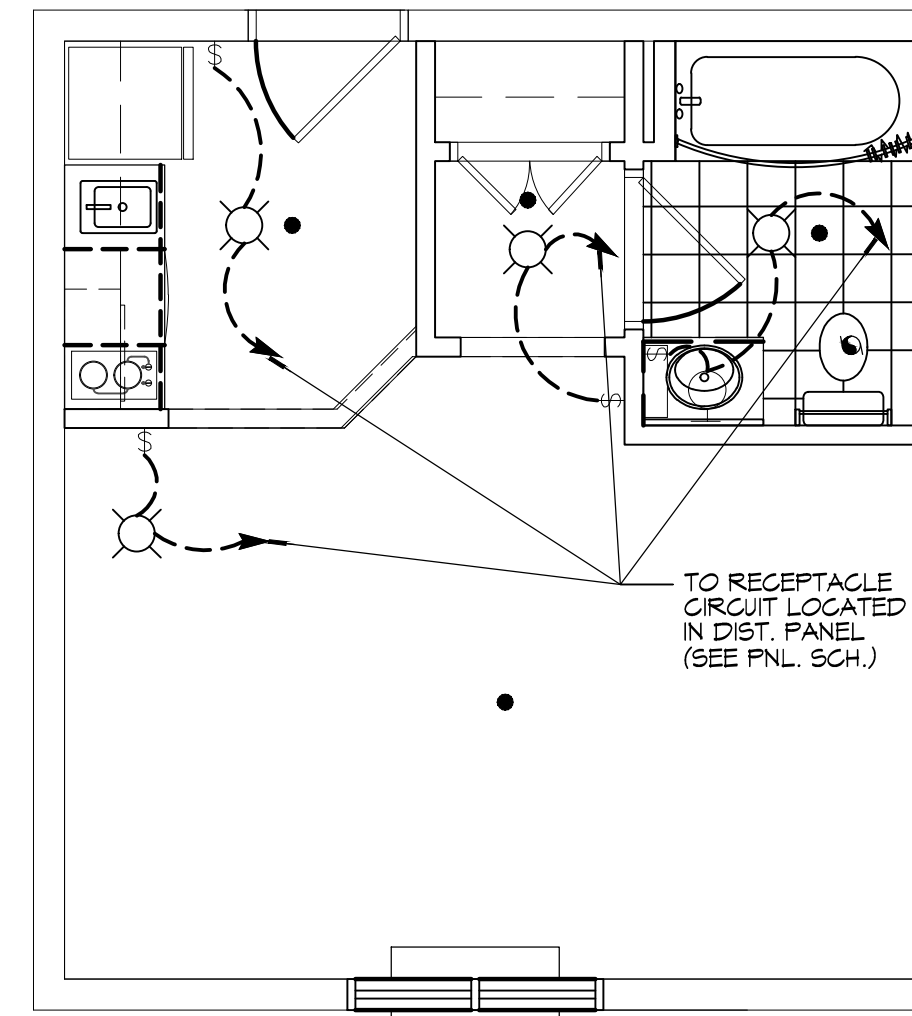
FILE NAME: A:\3-10-2016\10303-POWER & LIGHTING\10303-POWER & LIGHTING.dwg PLOT DATE: 4/28/16 PLOT TIME: 12:20:11 PM PLOT BY: JTL



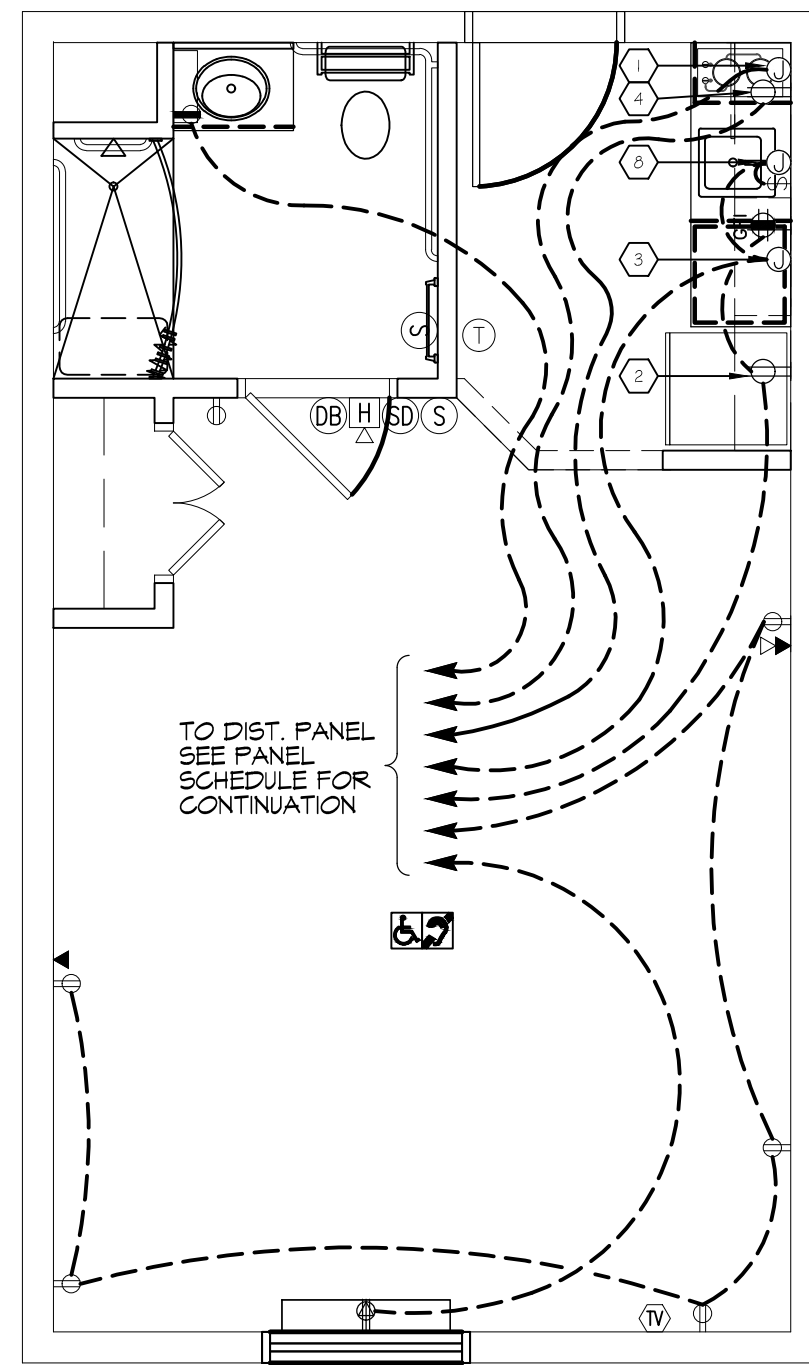
1 ACCESSIBLE DOUBLE QUEEN SUITE (LIGHTING)
SCALE: 1/4"=1'-0"



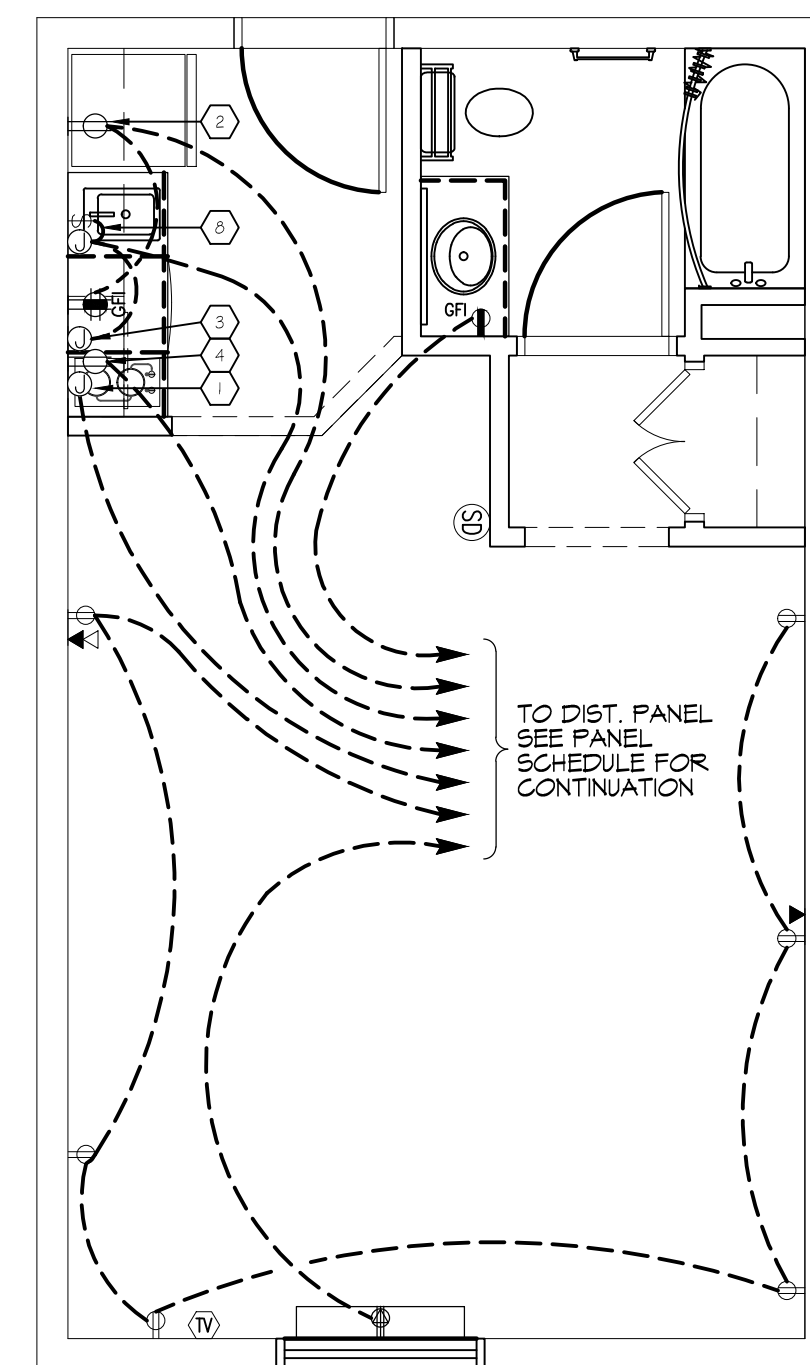
3 DOUBLE QUEEN SUITE (LIGHTING)
SCALE: 1/4"=1'-0"



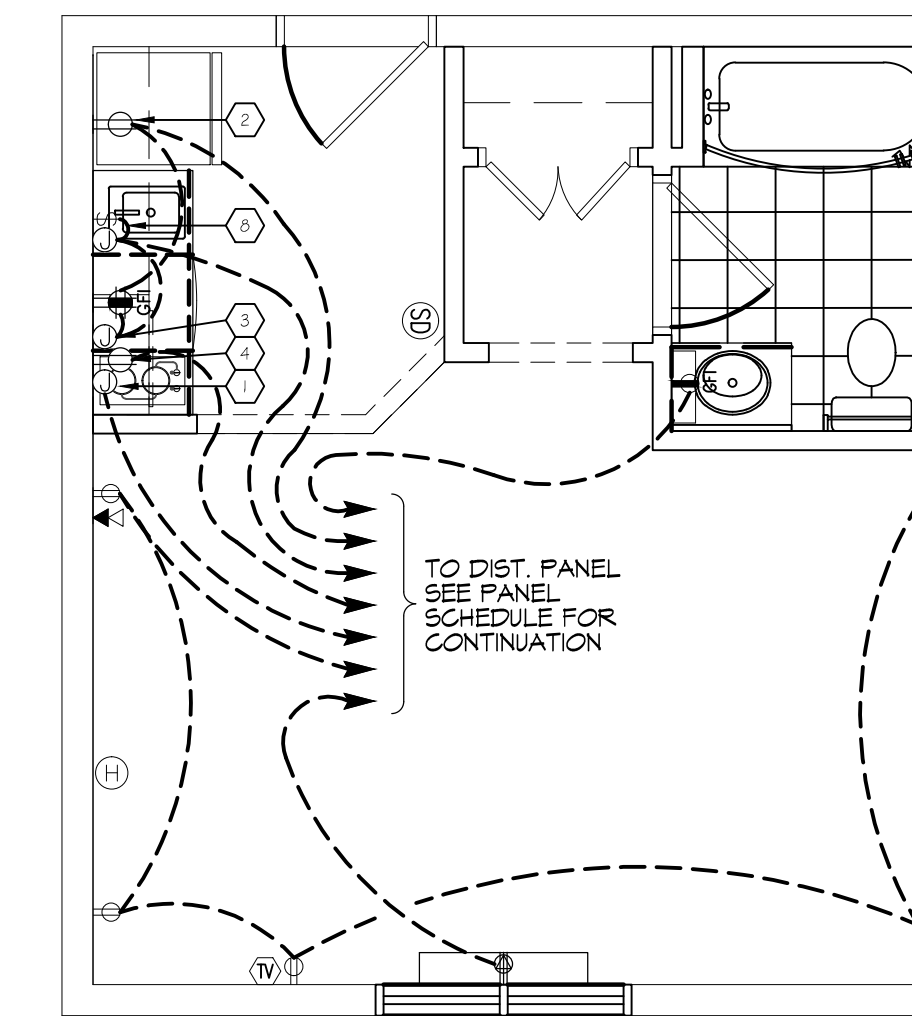
5 KING SUITE (LIGHTING)
SCALE: 1/4"=1'-0"



2 ACCESSIBLE DOUBLE QUEEN SUITE (POWER)
SCALE: 1/4"=1'-0"



4 DOUBLE QUEEN SUITE (POWER)
SCALE: 1/4"=1'-0"



6 KING SUITE (POWER)
SCALE: 1/4"=1'-0"

ELECTRICAL LEGEND - POWER

- SYMB
- ⊞ STANDARD 120V DUPLEX RECEPTACLE, NEMA 5-2 OR 18" AFF (UNLESS OTHERWISE NOTED)
 - ⊞ SINGLE-POLE DEDICATED RECEPTACLE - REFER TO PANEL SCHEDULE FOR CIRCUIT SIZE
 - ⊞ GFCI DUPLEX RECEPTACLE
 - ⊞ GFCI QUAD RECEPTACLE
 - ⊞ 208V DEDICATED RECEPTACLE
 - ⊞ 220V DEDICATED GFCI RECEPTACLE
 - ⊞ WEATHER-PROOF GFCI DUPLEX RECEPTACLE MOUNTED AT 30" AFF (UNLESS OTHERWISE NOTED)
 - ⊞ STANDARD 120V DUPLEX RECEPTACLE - FLOOR MOUNTED
 - ⊞ STANDARD QUAD RECEPTACLE - WALL-MOUNTED
 - ⊞ STANDARD QUAD RECEPTACLE - FLOOR MOUNTED
 - ⊞ 125V 15 AMP DUPLEX-USB 5VDC 3 AMP HUBBELL USB CHARGER RECEPTACLE
 - ⊞ 125V 15 AMP QUADPLEX-USB 5VDC 3 AMP HUBBELL USB CHARGER RECEPTACLE
 - ⊞ JUNCTION BOX
 - ⊞ GENERATOR BATTERY CHARGER GFI OUTLET
 - ⊞ 2-BUTTON PUSH BUTTON STATION
 - ⊞ COAX-CABLE CONNECTION FOR TELEVISION
 - ⊞ WALL MOUNTED DATA OUTLET
 - ⊞ FLOOR DATA OUTLET
 - ⊞ POWER DISCONNECT
 - ⊞ GAS WATER HEATER ON DECK OR MEZZANINE ABOVE - SIZE AS NOTED ON PLAN
 - ⊞ AIR CONDITIONING AIR HANDLING UNIT ON DECK OR MEZZANINE ABOVE, SEE MECHANICAL DRAWINGS
 - ⊞ AIR CONDITIONING CONDENSER UNIT ON CONCRETE PAD, SEE MECHANICAL DRAWINGS

- NOTES:
1. CONNECT ALL EMERGENCY/EXIT LIGHT FIXTURES TO NEAREST CONSTANT POWER SOURCE.
 2. THE #2 NEXT TO A RECEPTACLE OR DATA OUTLET DESIGNATES THAT THERE ARE TO BE TWO OUTLETS AT THAT LOCATION. ONE OVER THE OTHER (ONE HIGH & ONE LOW ON WALL) EXAMPLE: #2 OR #2
 3. REFER TO INTERIOR ELEVATIONS FOR MOUNTING HEIGHT AND ORIENTATION OF OUTLETS MOUNTED ABOVE COUNTERTOPS.
 4. ALL OUTLETS IN SUITES SHALL BE ARC FAULT.

ELECTRICAL LEGEND - LIGHTING

- ⊞ EMERGENCY LIGHT FIXTURE
- ⊞ EXIT LIGHT FIXTURE - WALL MOUNTED
- ⊞ EXIT LIGHT FIXTURE - CEILING MOUNTED
- ⊞ CEILING FAN
- ⊞ CLNG MTD FLUOR STRIP FIXTURE
- ⊞ RECESSED CEILING LIGHT FIXTURE
- ⊞ CLNG HUNG FLUOR STRIP FIXTURE
- ⊞ SURFACE MOUNTED LIGHT FIXTURE
- ⊞ WALL MOUNTED LIGHT FIXTURE
- ⊞ CLNG MTD FLUOR FIXTURE
- ⊞ OUTDOOR LIGHT ON PHOTO TIMER- MTD IN GROUND
- ⊞ PENDANT LIGHT FIXTURE
- ⊞ EXHAUST FAN - SEE MECH
- ⊞ ELECTRIC PANEL BOARD
- ⊞ CIRCUIT HOME RUN
- ⊞ WALL MTD SPEAKER - PROVIDE RATED HOUSING FOR RATED WALLS WHERE INDICATED
- ⊞ CLNG MTD SPEAKER - PROVIDE RATED HOUSING FOR RATED CEILING WHERE INDICATED
- * EXTEND TO FIXTURE(S) NOT SHOWN - SEE NOTE
- ⊞ LIGHT SWITCH 120V COMMERCIAL GRADE
- ⊞ LIGHT SWITCH - 3-WAY 120V COMMERCIAL GRADE
- ⊞ LIGHT SWITCH - DIMMER 120V COMMERCIAL GRADE
- ⊞ PROVIDED BY MC.

KEY NOTES

- ① JUNCTION BOX FOR RANGE TOP.
- ② DUPLEX RECEPTACLE FOR REFRIGERATOR, MOUNTED 30" ABOVE FLOOR.
- ③ JUNCTION BOX FOR DISHWASHER, MOUNTED BELOW COUNTER
- ④ DUPLEX RECEPTACLE FOR MICROWAVE, MOUNTED IN CABINET ABOVE MICROWAVE.
- ⑤ SWITCH AND JUNCTION BOX FOR GARBAGE DISPOSAL. SWITCH TO BE MOUNTED ABOVE COUNTER AND JUNCTION BOX TO BE MOUNTED IN CABINET BELOW SINK.

DAMMON ENGINEERING, INC.
 LOUISIANA & MISSISSIPPI
 Chief Engineer: Brian Mistrich, PE
 554 Old Spanish Trail
 Slidell, LA 70568
 www.dammonengineering.com
 info@dammonengineering.com
 PH: 985.849.5832 F: 985.841.9550

#	DESCRIPTION	DATE

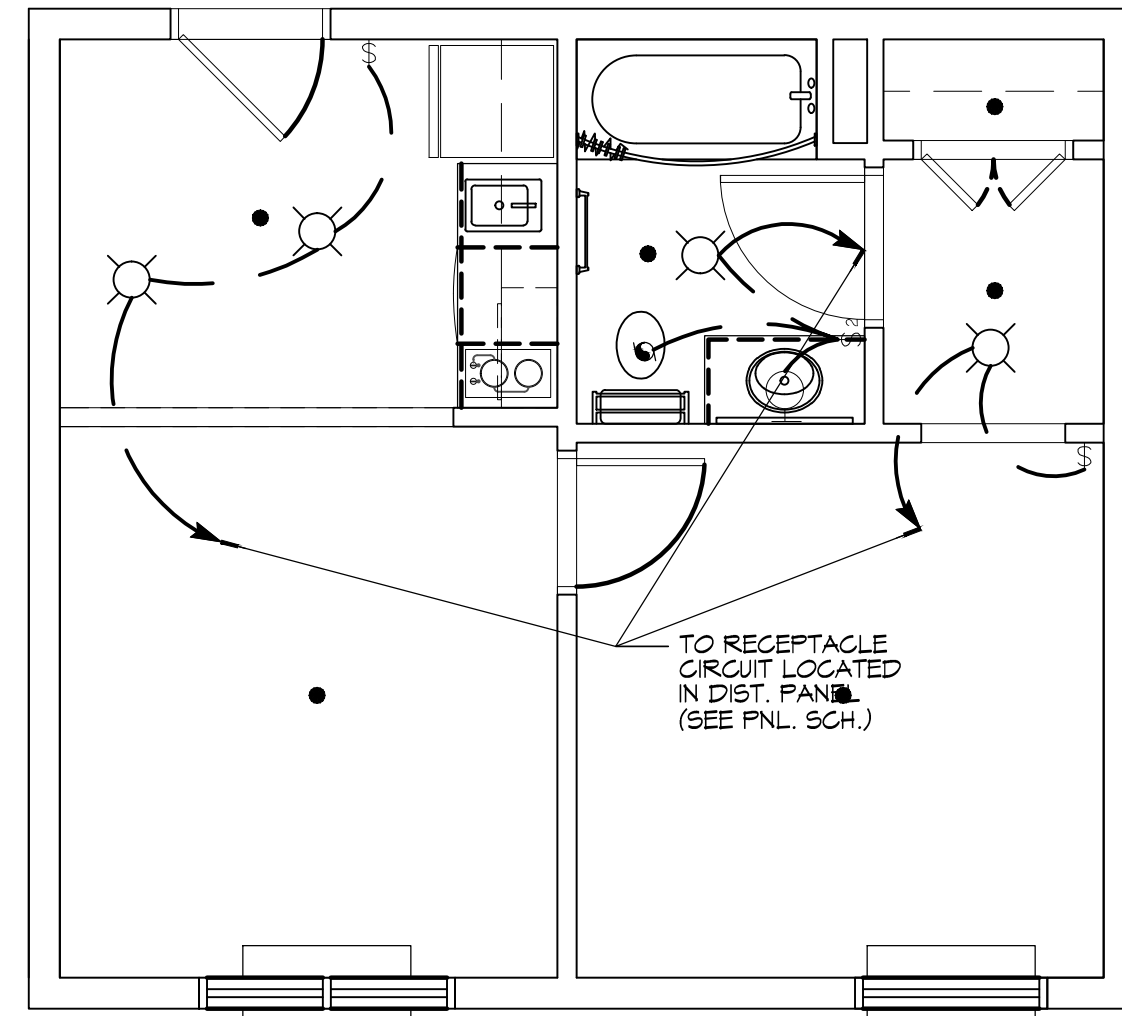
PRELIMINARY NOT FOR CONSTRUCTION

MAIN STAY SUITES
 100 MAIN STREET
 LOT #1 LA HWY 21
 HOOGERSVILLE, LA 70064
 JOB No: 2265 DATE: FEBRUARY, 2016
 DRAWN BY: JTL CHECKED BY: CKD

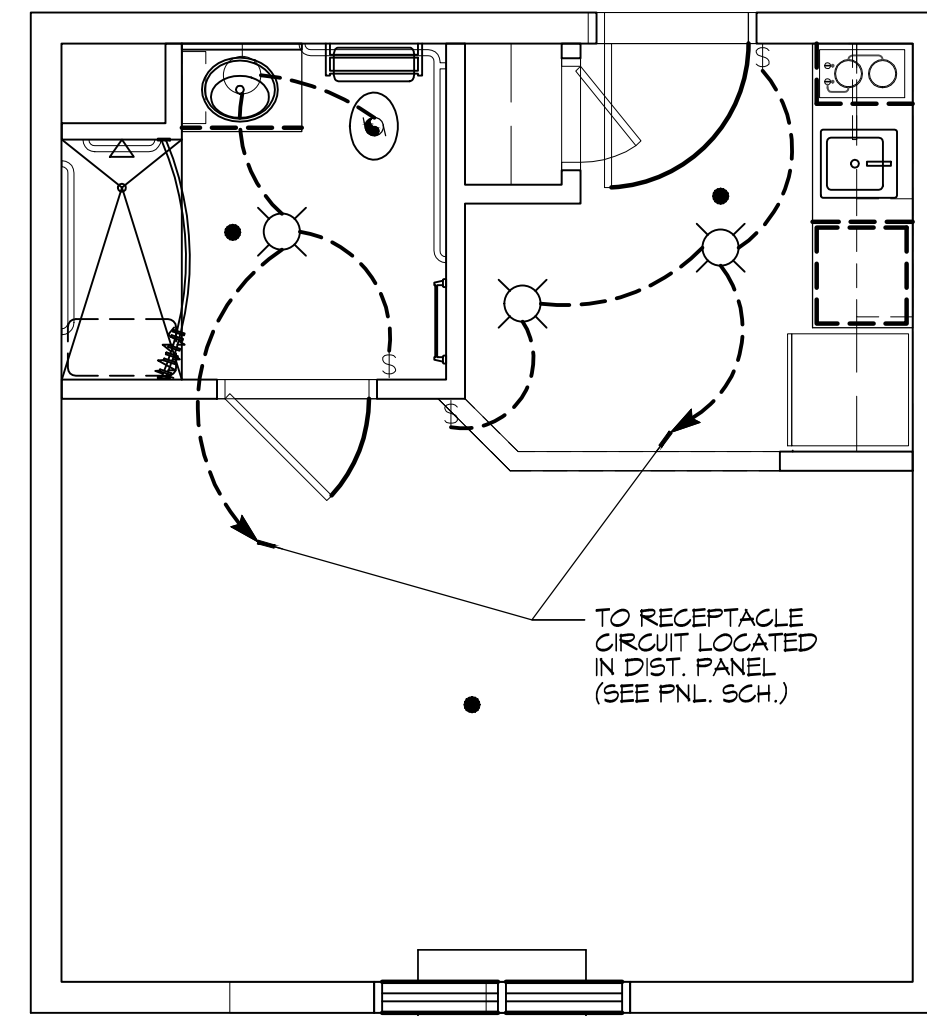
SHEET TITLE:
POWER & LIGHTING SUITES

DRAWING NUMBER:
E103

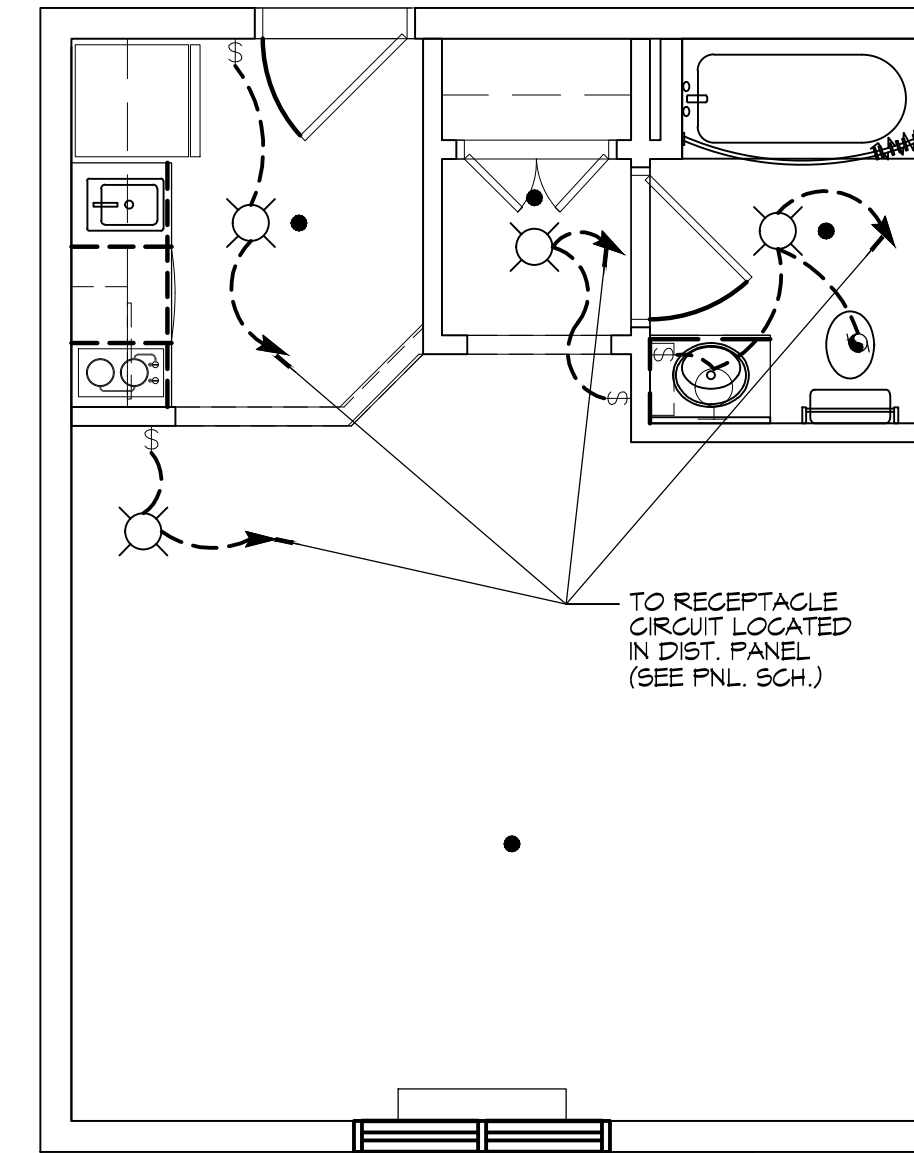
FILE NAME: A:\-New\2016\2016 - Mainstay Suites - Mainstay Suites\01-04-2016 - Mainstay Suites.dwg
 PLOT DATE: 4/28/16
 PLOTTER: HP DesignJet T1200
 DATE: 11/03/16



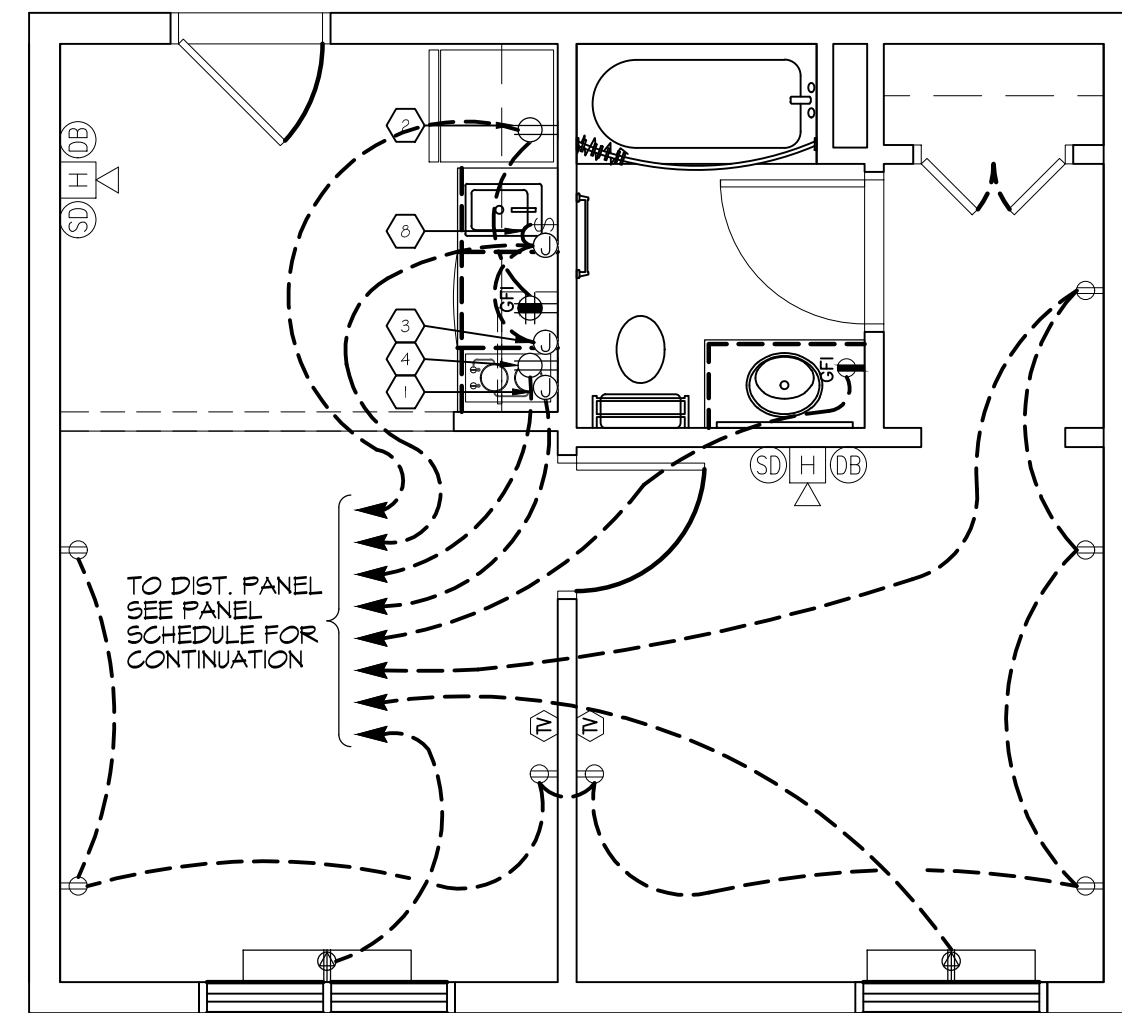
1 ACCESSIBLE ONE BEDROOM SUITE (LIGHTING)
SCALE: 1/4"=1'-0"



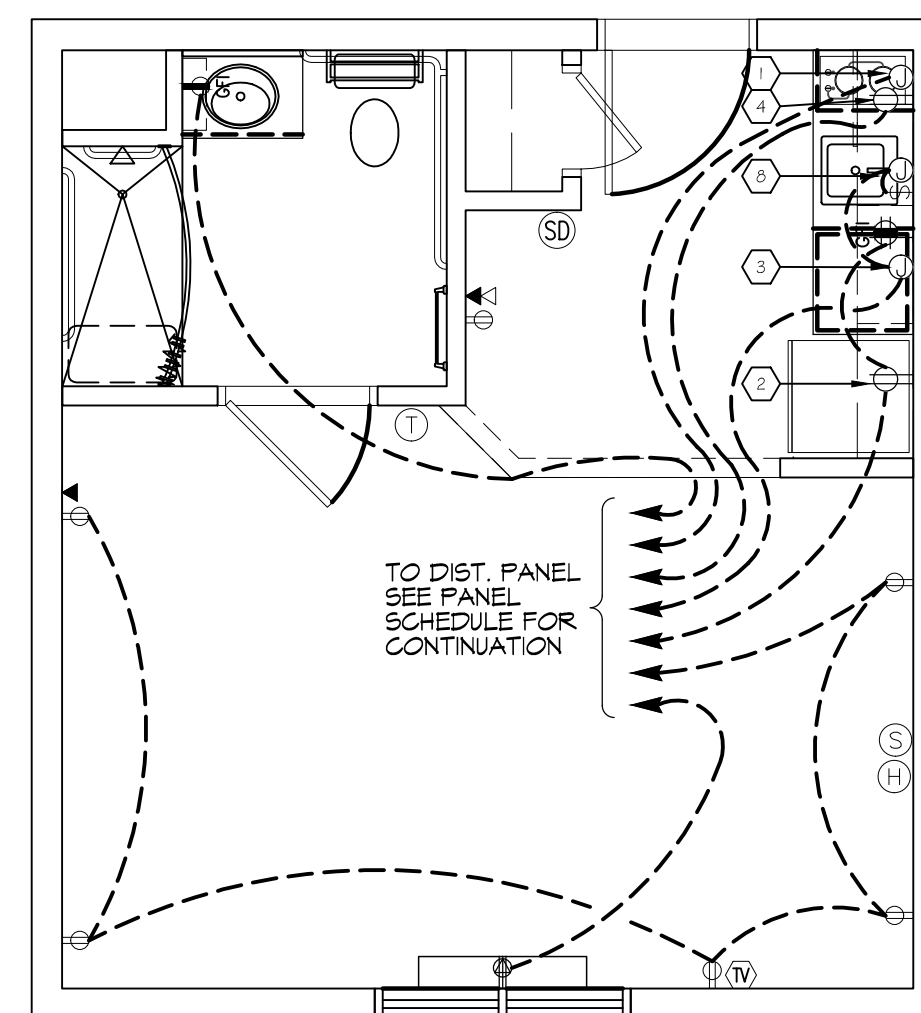
3 ACCESSIBLE KING SUITE (LIGHTING)
SCALE: 1/4"=1'-0"



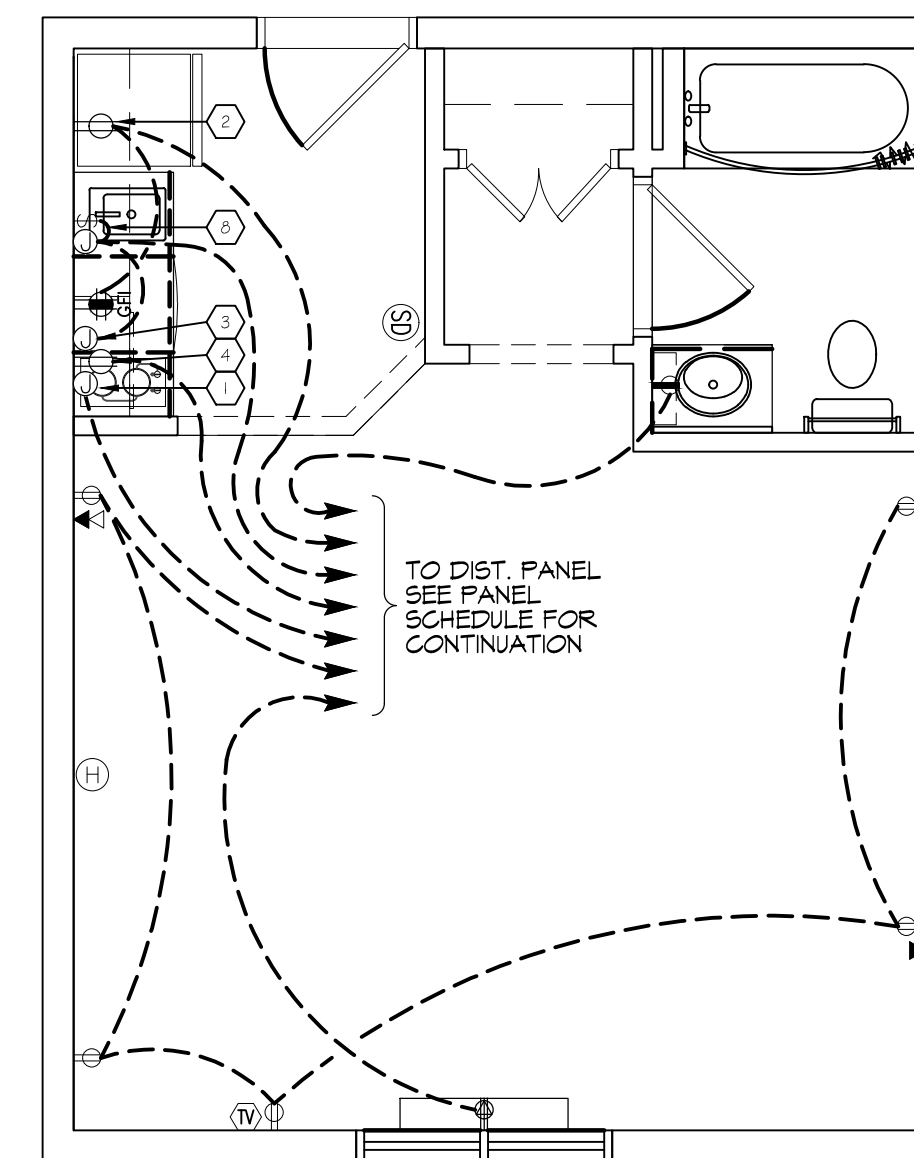
5 KING SUITE LARGE (LIGHTING)
SCALE: 1/4"=1'-0"



2 ACCESSIBLE ONE BEDROOM SUITE (POWER)
SCALE: 1/4"=1'-0"



4 ACCESSIBLE KING SUITE (POWER)
SCALE: 1/4"=1'-0"



6 KING SUITE LARGE (POWER)
SCALE: 1/4"=1'-0"

ELECTRICAL LEGEND - POWER

- SYMB
- ⊕ STANDARD 120V DUPLEX RECEPTACLE, NEMA 5-2 OR 18" AFF (UNLESS OTHERWISE NOTED)
 - ⊕ SINGLE-POLE DEDICATED RECEPTACLE - REFER TO PANEL SCHEDULE FOR CIRCUIT SIZE
 - ⊕ GFCI DUPLEX RECEPTACLE
 - ⊕ GFCI QUAD RECEPTACLE
 - ⊕ 208V DEDICATED RECEPTACLE
 - ⊕ 220V DEDICATED GFCI RECEPTACLE
 - ⊕ WEATHER-PROOF GFCI DUPLEX RECEPTACLE MOUNTED AT 30" AFF (UNLESS OTHERWISE NOTED)
 - ⊕ STANDARD 120V DUPLEX RECEPTACLE - FLOOR MOUNTED
 - ⊕ STANDARD QUAD RECEPTACLE - WALL-MOUNTED
 - ⊕ STANDARD QUAD RECEPTACLE - FLOOR MOUNTED
 - ⊕ 125V 15 AMP DUPLEX-USB 5VDC 3 AMP HUBBELL USB CHARGER RECEPTACLE
 - ⊕ 125V 15 AMP QUADPLEX-USB 5VDC 3 AMP HUBBELL USB CHARGER RECEPTACLE
 - ⊕ JUNCTION BOX
 - ⊕ GENERATOR BATTERY CHARGER GFI OUTLET
 - ⊕ 2-BUTTON PUSH BUTTON STATION
 - ⊕ COAX-CABLE CONNECTION FOR TELEVISION
 - ⊕ WALL MOUNTED DATA OUTLET
 - ⊕ FLOOR DATA OUTLET
 - ⊕ POWER DISCONNECT
 - ⊕ GAS WATER HEATER ON DECK OR MEZZANINE ABOVE - SIZE AS NOTED ON PLAN
 - ⊕ AIR CONDITIONING AIR HANDLING UNIT ON DECK OR MEZZANINE ABOVE, SEE MECHANICAL DRAWINGS
 - ⊕ AIR CONDITIONING CONDENSER UNIT ON CONCRETE PAD, SEE MECHANICAL DRAWINGS

- NOTES:
- CONNECT ALL EMERGENCY/EXIT LIGHT FIXTURES TO NEAREST CONSTANT POWER SOURCE.
 - THE #2 NEXT TO A RECEPTACLE OR DATA OUTLET DESIGNATES THAT THERE ARE TO BE TWO OUTLETS AT THAT LOCATION...ONE OVER THE OTHER (ONE HIGH & ONE LOW ON WALL) EXAMPLE: #2 OR #2
 - REFER TO INTERIOR ELEVATIONS FOR MOUNTING HEIGHT AND ORIENTATION OF OUTLETS MOUNTED ABOVE COUNTERTOPS.
 - ALL OUTLETS IN SUITES SHALL BE ARC FAULT.

ELECTRICAL LEGEND - LIGHTING

- ⊕ EMERGENCY LIGHT FIXTURE
- ⊕ EXIT LIGHT FIXTURE - WALL MOUNTED
- ⊕ EXIT LIGHT FIXTURE - CEILING MOUNTED
- ⊕ CEILING FAN
- ⊕ CLNG MTD FLOOR STRIP FIXTURE
- ⊕ RECESSED CEILING LIGHT FIXTURE
- ⊕ CLNG HUNG FLOOR STRIP FIXTURE
- ⊕ SURFACE MOUNTED LIGHT FIXTURE
- ⊕ WALL MOUNTED LIGHT FIXTURE
- ⊕ CLNG MTD FLOOR FIXTURE
- ⊕ OUTDOOR LIGHT ON PHOTO TIMER - MTD IN GROUND
- ⊕ PENDANT LIGHT FIXTURE
- ⊕ EXHAUST FAN - SEE MECH
- ⊕ ELECTRIC PANEL BOARD
- ⊕ CIRCUIT HOME RUN
- ⊕ WALL MTD SPEAKER - PROVIDE RATED HOUSING FOR RATED WALLS WHERE INDICATED
- ⊕ CLNG MTD SPEAKER - PROVIDE RATED HOUSING FOR RATED CEILING WHERE INDICATED
- * EXTEND TO FIXTURE(S) NOT SHOWN - SEE NOTE
- ⊕ LIGHT SWITCH 120V COMMERCIAL GRADE
- ⊕ LIGHT SWITCH - 3-WAY 120V COMMERCIAL GRADE
- ⊕ LIGHT SWITCH - DIMMER 120V COMMERCIAL GRADE
- ⊕ PROVIDED BY MC.

KEY NOTES

- JUNCTION BOX FOR RANGE TOP.
- DUPLEX RECEPTACLE FOR REFRIGERATOR, MOUNTED 30" ABOVE FLOOR.
- JUNCTION BOX FOR DISHWASHER, MOUNTED BELOW COUNTER.
- DUPLEX RECEPTACLE FOR MICROWAVE, MOUNTED IN CABINET ABOVE MICROWAVE.
- SWITCH AND JUNCTION BOX FOR GARBAGE DISPOSAL, SWITCH TO BE MOUNTED ABOVE COUNTER AND JUNCTION BOX TO BE MOUNTED IN CABINET BELOW SINK.

DAMMON ENGINEERING, INC.
 LOUISIANA & MISSISSIPPI
 Chief Engineer: Brian Mistrich, PE
 554 Old Spanish Trail
 Slidell, LA 70568
 www.dammonengineering.com
 info@dammonengineering.com
 PH: 985.849.5832 F: 985.841.5950

#	DESCRIPTION	DATE

SEAL: _____

PRELIMINARY NOT FOR CONSTRUCTION

MAINSTAY SUITES
 100 MAIN STREET
 LOT #14 HWY 27
 HOOGERSVILLE, LA 70045
 JOB No: 2265
 DATE: FEBRUARY, 2016
 DRAWN BY: JTL
 CHECKED BY: CKD

SHEET TITLE:
POWER & LIGHTING SUITES

DRAWING NUMBER:
E104

SHEET No: 10 of 10

PANEL SCHEDULE											
PANEL: #12 LOCATION: MECHANICAL, ELECTRICAL, & PLUMBING ROOM 114 FIRST LEVEL FEEDER SOURCE: MDP PANEL				VOLTAGE: 208/120V, 200A, 3Ø, 4W/MLD ENCLOSURE: SURFACE MOUNTED IV EQUIPMENT GND BAR SQ D TYPE GO LOAD CENTER							
CKT NO	THHN WIRE SIZE	LOAD DESCRIPTION	BREAKER	LOAD (VA)	LOAD (VA)	BREAKER	LOAD DESCRIPTION	THHN WIRE SIZE	CKT NO		
		LOCATION	AMP POLE			POLE AMP	LOCATION			AG	BG
1	#12	RECEPTACLES AT THE REGISTRATION DESK	20 1	360	1000	1 20	RECEPTACLES, VESTIBULE AND WORK ROOM	#12	2		
3	#12	RECEPTACLES AT THE REGISTRATION DESK	20 1	360	1500	1 20	DEDICATED RECEPTACLE, COMMUNITY ROOM	#12	4		
5	#12	RECEPTACLES RECEPTION ROOM, STORE AND CORRIDOR	20 1	720	1050	1 20	RECEPTACLES, RIGHT SIDE OF COMMUNITY ROOM & PORCH	#12	6		
7	#12	RECEPTACLES MANAGERS OFFICE AND STORE	20 1	1080	900	1 20	RECEPTACLES, LEFT SIDE OF COMMUNITY ROOM & PORCH	#12	8		
9	#12	RECEPTACLES LINEN, LAUNDRY AND BREAK ROOM	20 1	720	360	1 20	RECEPTACLES, AT SNK IN PANTRY ROOM	#12	10		
11	#12	RECEPTACLES LAUNDRY, MECHANICAL ROOM AND CORRIDOR	20 1	720	360	1 20	RECEPTACLE, DRY COUNTER IN PANTRY ROOM	#12	12		
13	#12	DEDICATED RECEPTACLE, WORK ROOM	20 1	720	1500	1 20	DEDICATED RECEPTACLE, PANTRY ROOM	#12	14		
15	#12	EXHAUST FAN IN SHOWER	20 1	500	1500	1 20	DEDICATED RECEPTACLE, PANTRY ROOM	#12	16		
17	#12	GAS WATER HEATER IGNITER FOR WATER HEATER #1	20 1	500	1500	1 20	DRINKING FOUNTAIN IN CORRIDOR	#12	18		
19	#12	GAS WATER HEATER IGNITER FOR WATER HEATER #2	20 1	500	1800	1 20	ELEVATOR CONTROLS POWER	#12	20		
21	#12	RECEPTACLES THIS ROOM, WATER HEATER ROOM AND A/C EQUIP.	20 1	500	1500	1 20	DEDICATED GFI RECEPTACLE IN ELEVATOR EQUIPMENT ROOM	#12	22		
23	#12	LIGHTING, THIS ROOM, WATER HEATER ROOM, THIS END OF HALLWAY	20 1	984	1500	1 20	RECEPTACLE IN ELEVATOR PIT	#12	24		
25	#12	LIGHTING, LINEN, LAUNDRY ROOM AND BREAK ROOM	20 1	847	2500				26		
27	#12	LIGHTING, ELEVATOR EQUIPMENT ROOM, FIT, AND ELEVATOR LOBBY	20 1	847	2500	2 30	GUEST DRYER	#10	28		
29	#12	LIGHTING, GUEST LAUNDRY, MECHANICAL ROOM, MANAGERS SUITE, STORE	20 1	847	2500				30		
31	#12	LIGHTING, REAR PORCH	20 1	736	2500	2 30	GUEST DRYER	#10	32		
33	#12	LIGHTING, COMMUNITY ROOM, PANTRY, PORCH CHAIRS	20 1	412	1500	1 20	GUEST WASHER	#12	34		
35	#12	LIGHTING, COVERED PORCH AND ENTRY	20 1	1014	1500	1 20	GUEST WASHER	#12	36		
37	#12	LIGHTING, LOBBY, WORKROOM, VESTIBULE AND RECEPTION AREA	20 1	781	1500	1 20	GUEST WASHER	#12	38		
39	#12	SIGN LIGHTING	20 1	1000		1 20	SPARE		40		
41		SPARE	20 1			1 20	SPARE		42		
SOLID NEUTRAL NEUTRAL WIRE (N)				TOTAL CONNECTED LOAD (VA) = 44,468				GROUND BUS GROUND WIRE (G)			
				AG = 16,744	BG = 13,691	CG = 14,025					

PANEL SCHEDULE											
PANEL: #14 LOCATION: MECHANICAL, ELECTRICAL, & PLUMBING ROOM 114 FIRST LEVEL FEEDER SOURCE: MDP PANEL				VOLTAGE: 208/120V, 200A, 3Ø, 4W/MLD ENCLOSURE: SURFACE MOUNTED IV EQUIPMENT GND BAR SQ D TYPE GO LOAD CENTER							
CKT NO	THHN WIRE SIZE	LOAD DESCRIPTION	BREAKER	LOAD (VA)	LOAD (VA)	BREAKER	LOAD DESCRIPTION	THHN WIRE SIZE	CKT NO		
		LOCATION	AMP POLE			POLE AMP	LOCATION			AG	BG
1	#10	COOK TOP TWO BURNER, SUITE 110	30 1	2400	0	1 20	SPARE	#12	2		
3	#10	COOK TOP TWO BURNER, SUITE 112	30 1	2400	0	1 20	SPARE	#12	4		
5	#10	COOK TOP TWO BURNER, SUITE 116	30 1	2400	1800	1 20	REFRIGERATOR AND KITCHEN COUNTER RECEPTACLES, SUITE 111	#12	6		
7	#10	COOK TOP TWO BURNER, SUITE 111	30 1	2400	1000	1 20	MICROWAVE OVEN, SUITE 111	#12	8		
9	#10	COOK TOP TWO BURNER, SUITE 115	30 1	2400	1000	1 20	DISH WASHER AND GARBAGE DISPOSAL, SUITE 111	#12	10		
11	#12	REFRIGERATOR AND KITCHEN COUNTER RECEPTACLES, SUITE 110	20 1	1800	1080	1 20	RECEPTACLES AND LIGHTING, SUITE 111	#12	12		
13	#12	MICROWAVE OVEN, SUITE 110	20 1	1000	720	1 20	BATHROOM RECEPTACLES AND LIGHTING SUITE 111	#12	14		
15	#12	DISH WASHER AND GARBAGE DISPOSAL, SUITE 110	20 1	1000	1500	1 20	REFRIGERATOR AND KITCHEN COUNTER RECEPTACLES, SUITE 115	#12	16		
17	#12	RECEPTACLES AND LIGHTING, SUITE 110	20 1	1080	1000	1 20	MICROWAVE OVEN, SUITE 115	#12	18		
19	#12	BATHROOM RECEPTACLES AND LIGHTING SUITE 110	20 1	720	1000	1 20	DISH WASHER AND GARBAGE DISPOSAL, SUITE 115	#12	20		
21	#12	REFRIGERATOR AND KITCHEN COUNTER RECEPTACLES, SUITE 112	20 1	1800	1080	1 20	RECEPTACLES AND LIGHTING, SUITE 115	#12	22		
23	#12	MICROWAVE OVEN, SUITE 112	20 1	1000	720	1 20	BATHROOM RECEPTACLES AND LIGHTING SUITE 115	#12	24		
25	#12	DISH WASHER AND GARBAGE DISPOSAL, SUITE 112	20 1	1000	1500	1 20	REFRIGERATOR AND KITCHEN COUNTER RECEPTACLES, SUITE 115	#12	26		
27	#12	RECEPTACLES AND LIGHTING, SUITE 112	20 1	1080	1000	1 20	MICROWAVE OVEN, SUITE 116	#12	28		
29	#12	BATHROOM RECEPTACLES AND LIGHTING SUITE 112	20 1	720	1000	1 20	DISH WASHER AND GARBAGE DISPOSAL, SUITE 116	#12	30		
31	#12	SUITE 110 PTAC 208V RECEPTACLE	20 2	1750	1080	1 20	RECEPTACLES AND LIGHTING, SUITE 116	#12	32		
33	#12	SUITE 112 PTAC 208V RECEPTACLE	20 2	1750	720	1 20	BATHROOM RECEPTACLES AND LIGHTING SUITE 116	#12	34		
35	#12	SUITE 112 PTAC 208V RECEPTACLE	20 2	1750	1750	2 20	SUITE 111 PTAC 208V RECEPTACLE	#12	36		
37	#12	SUITE 112 PTAC 208V RECEPTACLE	20 2	1750	1750	2 20	SUITE 111 PTAC 208V RECEPTACLE	#12	38		
39	#12	SUITE 116 PTAC 208V RECEPTACLE	20 2	1750	1750	2 20	SUITE 115 PTAC 208V RECEPTACLE	#12	40		
41	#12	SUITE 116 PTAC 208V RECEPTACLE	20 2	1750	1750	2 20	SUITE 115 PTAC 208V RECEPTACLE	#12	42		
SOLID NEUTRAL NEUTRAL WIRE (N)				TOTAL CONNECTED LOAD (VA) = 96,000				GROUND BUS GROUND WIRE (G)			
				AG = 18,070	BG = 18,450	CG = 14,000					

PANEL SCHEDULE											
PANEL: #16 LOCATION: MECHANICAL, ELECTRICAL, & PLUMBING ROOM 114 FIRST LEVEL FEEDER SOURCE: MDP PANEL				VOLTAGE: 208/120V, 200A, 3Ø, 4W/MLD ENCLOSURE: SURFACE MOUNTED IV EQUIPMENT GND BAR SQ D TYPE GO LOAD CENTER							
CKT NO	THHN WIRE SIZE	LOAD DESCRIPTION	BREAKER	LOAD (VA)	LOAD (VA)	BREAKER	LOAD DESCRIPTION	THHN WIRE SIZE	CKT NO		
		LOCATION	AMP POLE			POLE AMP	LOCATION			AG	BG
1	#12	SUITE 130 PTAC 208V RECEPTACLE	20 2	1750	1500	1 20	REFRIGERATOR AND KITCHEN COUNTER RECEPTACLES, SUITE 133	#12	2		
3	#12	SUITE 130 PTAC 208V RECEPTACLE	20 2	1750	1000	1 20	MICROWAVE OVEN, SUITE 133	#12	4		
5	#12	SUITE 134 PTAC 208V RECEPTACLE	20 2	1750	1000	1 20	DISH WASHER AND GARBAGE DISPOSAL, SUITE 133	#12	6		
7	#12	SUITE 134 PTAC 208V RECEPTACLE	20 2	1750	1080	1 20	RECEPTACLES AND LIGHTING, SUITE 133	#12	8		
9	#10	COOK TOP TWO BURNER, SUITE 134	30 1	2400	720	1 20	BATHROOM RECEPTACLES AND LIGHTING SUITE 133	#12	10		
11	#10	COOK TOP TWO BURNER, SUITE 133	30 1	2400	1500	1 20	REFRIGERATOR AND KITCHEN COUNTER RECEPTACLES, SUITE 133	#12	12		
13					1000	1 20	MICROWAVE OVEN, SUITE 133	#12	14		
15					1000	1 20	DISH WASHER AND GARBAGE DISPOSAL, SUITE 133	#12	16		
17					1080	1 20	RECEPTACLES AND LIGHTING, SUITE 133	#12	18		
19					720	1 20	BATHROOM RECEPTACLES AND LIGHTING SUITE 133	#12	20		
21									22		
23									24		
25									26		
27									28		
29									30		
31									32		
33									34		
35									36		
37									38		
39									40		
41									42		
SOLID NEUTRAL NEUTRAL WIRE (N)				TOTAL CONNECTED LOAD (VA) = 22,400				GROUND BUS GROUND WIRE (G)			
				AG = 7,800	BG = 6,870	CG = 7,730					

PANEL SCHEDULE											
PANEL: #18 LOCATION: MECHANICAL, ELECTRICAL, & PLUMBING ROOM 114 FIRST LEVEL FEEDER SOURCE: MDP PANEL				VOLTAGE: 208/120V, 200A, 3Ø, 4W/MLD ENCLOSURE: SURFACE MOUNTED IV EQUIPMENT GND BAR SQ D TYPE GO LOAD CENTER							
CKT NO	THHN WIRE SIZE	LOAD DESCRIPTION	BREAKER	LOAD (VA)	LOAD (VA)	BREAKER	LOAD DESCRIPTION	THHN WIRE SIZE	CKT NO		
		LOCATION	AMP POLE			POLE AMP	LOCATION			AG	BG
1	#12	WOMEN'S ROOM AND MEN'S ROOM	20 1	1000	200	1 20	RECEPTACLE, GAMING ROOM	#12	2		
3	#12	PORCH CHAIRS, A/C EQUIP.	20 1	1000	200	1 20	RECEPTACLE, GAMING ROOM	#12	4		
5	#12	RECEPTACLES, CONFERENCE ROOM 140	20 1	540	200	1 20	RECEPTACLE, GAMING ROOM	#12	6		
7	#12	RECEPTACLES, CONFERENCE ROOM 141	20 1	540	1080	1 20	RECEPTACLES, LOUNGE, LOBBY, OUTSIDE	#12	8		
9	#12	RECEPTACLES, MID ROOM AND HALLWAY	20 1	540	1500	1 20	DEDICATED RECEPTACLE, AT BAR IN LOUNGE	#12	10		
11	#12	RECEPTACLES, EXERCISE ROOM AND OUTSIDE	20 1	900	1500	1 20	DEDICATED RECEPTACLE, AT BAR IN LOUNGE	#12	12		
13	#12	DEDICATED RECEPTACLE, EXERCISE ROOM	20 1	1500	1500	1 20	RECEPTACLES, AT BAR IN LOUNGE	#12	14		
15	#12	DEDICATED RECEPTACLE, EXERCISE ROOM	20 1	1500	1500	1 20	DEDICATED RECEPTACLE, AT BAR IN LOUNGE	#12	16		
17	#12	DEDICATED RECEPTACLE NEAR STAIRS, OPPOSITE END OF BUILDING	20 1	1500	1500	1 20	DEDICATED RECEPTACLE, AT BAR IN LOUNGE	#12	18		
19	#12	DEDICATED RECEPTACLE NEAR STAIRS, OPPOSITE END OF BUILDING	20 1	1500	1500	1 20	DEDICATED RECEPTACLE, AT BAR IN LOUNGE	#12	20		
21	#12	LIGHTING, MEN'S ROOM, WOMEN'S ROOM, CENTER OF HALLWAY	20 1	640	1500	1 20	DEDICATED RECEPTACLE, AT BAR IN LOUNGE	#12	22		
23	#12	LIGHTING, LOUNGE AND GAMING	20 1	640	541	1 20	LIGHTING, EXERCISE ROOM	#12	24		
25	#12	LIGHTING, CONFERENCE ROOM	20 1	940		1 20	SPARE		26		
27	#12	LIGHTING, OPPOSITE END OF HALL AND STORAGE ROOM	20 1	546		1 20	SPARE		28		
29	#12	LIGHTING, MID ROOM	20 1	541		1 20	SPARE		30		
31		SPARE	20 1			1 20	SPARE		32		
33		SPARE	20 1			1 20	SPARE		34		
35		SPARE	20 1			1 20	SPARE		36		
37		SPARE	20 1			1 20	SPARE		38		
39		SPARE	20 1			1 20	SPARE		40		
41		SPARE	20 1			1 20	SPARE		42		
SOLID NEUTRAL NEUTRAL WIRE (N)				TOTAL CONNECTED LOAD (VA) = 21,048				GROUND BUS GROUND WIRE (G)			
				AG = 9,810	BG = 9,276	CG = 7,962					

PANEL SCHEDULE											
PANEL: #18 LOCATION: MECHANICAL, ELECTRICAL, & PLUMBING ROOM 114 FIRST LEVEL FEEDER SOURCE: MDP PANEL				VOLTAGE: 208/120V, 200A, 3Ø, 4W/MLD ENCLOSURE: SURFACE MOUNTED IV EQUIPMENT GND BAR SQ D TYPE GO LOAD CENTER							
CKT NO	THHN WIRE SIZE	LOAD DESCRIPTION	BREAKER	LOAD (VA)	LOAD (VA)	BREAKER	LOAD DESCRIPTION	THHN WIRE SIZE	CKT NO		
		LOCATION	AMP POLE			POLE AMP	LOCATION			AG	BG
1	#10	COOK TOP TWO BURNER, SUITE 111	30 1	2400	0	1 20	SPARE	#12	2		
3	#10	COOK TOP TWO BURNER, SUITE 132	30 1	2400	0	1 20	SPARE	#12	4		
5	#10	COOK TOP TWO BURNER, SUITE 133	30 1	2400	1500	1 20	REFRIGERATOR AND KITCHEN COUNTER RECEPTACLES, SUITE 133	#12	6		
7	#10	COOK TOP TWO BURNER, SUITE 134	30 1	2400	1000	1 20	MICROWAVE OVEN, SUITE 133	#12	8		
9	#10	COOK TOP TWO BURNER, SUITE 135	30 1	2400	1000	1 20	DISH WASHER AND GARBAGE DISPOSAL, SUITE 133	#12	10		
11	#12	REFRIGERATOR AND KITCHEN COUNTER RECEPTACLES, SUITE 111	20 1	1800	1080	1 20	RECEPTACLES AND LIGHTING, SUITE 133	#12	12		
13	#12	MICROWAVE OVEN, SUITE 111	20 1	1000	720	1 20	BATHROOM RECEPTACLES AND LIGHTING SUITE 133	#12	14		
15	#12	DISH WASHER AND GARBAGE DISPOSAL, SUITE 111	20 1	1000	1500	1 20	REFRIGERATOR AND KITCHEN COUNTER RECEPTACLES, SUITE 134	#12	16		
17	#12	RECEPTACLES AND LIGHTING, SUITE 111	20 1	1080	1000	1 20	MICROWAVE OVEN, SUITE 134	#12	18		
19	#12	BATHROOM RECEPTACLES AND LIGHTING SUITE 111	20 1	720	1000	1 20	DISH WASHER AND GARBAGE DISPOSAL, SUITE 134	#12	20		
21	#12	REFRIGERATOR AND KITCHEN COUNTER RECEPTACLES, SUITE 132	20 1	1800	1080	1 20	RECEPTACLES AND LIGHTING, SUITE 134	#12	22		
23	#12	MICROWAVE OVEN, SUITE 132	20 1	1000	720	1 20	BATHROOM RECEPTACLES AND LIGHTING SUITE 134	#12	24		
25	#12	DISH WASHER AND GARBAGE DISPOSAL, SUITE 132	20 1	1000	1500	1 20	REFRIGERATOR AND KITCHEN COUNTER RECEPTACLES, SUITE 135	#12	26		
27	#12	RECEPTACLES AND LIGHTING, SUITE 132	20 1	1080	1000	1 20	MICROWAVE OVEN, SUITE				

PANEL SCHEDULE												
PANEL: F21				MECHANICAL, ELECTRICAL, & PLUMBING ROOM 204 SECOND LEVEL				VOLTAGE: 208/120V, 200A, 3Ø, 4W/MLD SURFACE MOUNTED IV EQUIPMENT GND BAR 8ØD TYPE GO LOAD CENTER				
CKT NO	THHN WIRE SIZE	LOAD DESCRIPTION	BREAKER AMP POLE	LOAD (VA)	AS BS CS			LOAD (VA)	BREAKER AMP POLE	LOAD DESCRIPTION	THHN WIRE SIZE	CKT NO
1	#12	DEDICATED RECEPTACLE NEAR STAIRS, OPPOSITE END OF BUILDING	20 1	1500				1500	1 20	RECEPTACLES, MANT. ROOM AT OPPOSITE END OF BUILDING AND HALLWAY	#12	2
3	#12	DEDICATED RECEPTACLE NEAR STAIRS, OPPOSITE END OF BUILDING	20 1	1500				1500	1 20	RECEPTACLES, LAUNDRY ROOM HOSEKEEPING AND HALLWAY	#12	4
5	SPARE		20 1					1500	1 20	RECEPTACLE, THIS ROOM	#12	6
7	SPARE		20 1					1430	1 20	LIGHTING, THIS END OF HALL	#12	8
9	SPARE		20 1					315	1 20	LIGHTING, STAIRS AND EQUIPMENT ROOM, THIS END OF BUILDING	#12	10
11	SPARE		20 1					434	1 20	LIGHTING, HOSEKEEPING, LAUNDRY AND ELEVATOR LOBBY	#12	12
13	SPARE		20 1					512	1 20	LIGHTS, CENTER OF HALL	#12	14
15	SPARE		20 1					644	1 20	LIGHTING, OPPOSITE END OF HALLWAY	#12	16
17	SPARE		20 1					628	1 20	LIGHTING, STAIRS AND MAINTENANCE ROOM OPPOSITE END OF BUILDING	#12	18
19	#4/0	PANEL P22	175 3	20680					1 20	SPARE	#12	20
21	#4/0	PANEL P23	175 3	19000					1 20	SPARE	#12	24
23	#4/0	PANEL P23	175 3	18710					1 20	SPARE	#12	26
25	#4/0	PANEL P23	175 3	18430					1 20	SPARE	#12	28
27	#4/0	PANEL P23	175 3	19000					1 20	SPARE	#12	30
31	#4/0	PANEL P24	175 3	18710				3333			#12	32
33	#4/0	PANEL P24	175 3	18430				3333	3 60	2 1/2 TON HVAC UNIT, 2ND LEVEL 10 KW HEAT	#6	34
35	#4/0	PANEL P24	175 3	19000				3333			#12	36
37	#4/0	PANEL P24	175 3	18710				18070			#12	38
39	#4/0	PANEL P25	175 3	18430				18430	3 175	PANEL P26	#4/0	40
41	#4/0	PANEL P25	175 3	19000				19000			#12	42
SOLID NEUTRAL NEUTRAL WIRE (N)				TOTAL CONNECTED LOAD (VA) = 301,915			GROUND BUS GROUND WIRE (G)					
				AD = 98,908	BD = 102,912	CD = 98,575						

PANEL SCHEDULE												
PANEL: F22				MECHANICAL, ELECTRICAL, & PLUMBING ROOM 204 SECOND LEVEL				VOLTAGE: 208/120V, 200A, 3Ø, 4W/MLD SURFACE MOUNTED IV EQUIPMENT GND BAR 8ØD TYPE GO LOAD CENTER				
CKT NO	THHN WIRE SIZE	LOAD DESCRIPTION	BREAKER AMP POLE	LOAD (VA)	AS BS CS			LOAD (VA)	BREAKER AMP POLE	LOAD DESCRIPTION	THHN WIRE SIZE	CKT NO
1	#10	COOK TOP TWO BURNER, SUITE 201	30 1	2400				0	1 20	SPARE	#12	2
3	#10	COOK TOP TWO BURNER, SUITE 202	30 1	2400				0	1 20	SPARE	#12	4
5	#10	COOK TOP TWO BURNER, SUITE 203	30 1	2400				1500	1 20	REFRIGERATOR AND KITCHEN COUNTER RECEPTACLES, SUITE 210	#12	6
7	#10	COOK TOP TWO BURNER, SUITE 204	30 1	2400				1000	1 20	MICROWAVE OVEN, SUITE 210	#12	8
9	#10	COOK TOP TWO BURNER, SUITE 205	30 1	2400				1000	1 20	DISH WASHER AND GARBAGE DISPOSAL, SUITE 210	#12	10
11	#12	REFRIGERATOR AND KITCHEN COUNTER RECEPTACLES, SUITE 206	20 1	1500				1080	1 20	RECEPTACLES AND LIGHTING, SUITE 210	#12	12
13	#12	MICROWAVE OVEN, SUITE 206	20 1	1000				720	1 20	BATHROOM RECEPTACLES AND LIGHTING SUITE 210	#12	14
15	#12	DISH WASHER AND GARBAGE DISPOSAL, SUITE 206	20 1	1000				1500	1 20	REFRIGERATOR AND KITCHEN COUNTER RECEPTACLES, SUITE 211	#12	16
17	#12	RECEPTACLES AND LIGHTING, SUITE 206	20 1	1080				1000	1 20	MICROWAVE OVEN, SUITE 211	#12	18
19	#12	BATHROOM RECEPTACLES AND LIGHTING SUITE 206	20 1	720				1000	1 20	DISH WASHER AND GARBAGE DISPOSAL, SUITE 211	#12	20
21	#12	REFRIGERATOR AND KITCHEN COUNTER RECEPTACLES, SUITE 207	20 1	1500				1080	1 20	RECEPTACLES AND LIGHTING, SUITE 211	#12	22
23	#12	MICROWAVE OVEN, SUITE 207	20 1	1000				720	1 20	BATHROOM RECEPTACLES AND LIGHTING SUITE 211	#12	24
25	#12	DISH WASHER AND GARBAGE DISPOSAL, SUITE 207	20 1	1000				1500	1 20	REFRIGERATOR AND KITCHEN COUNTER RECEPTACLES, SUITE 212	#12	26
27	#12	RECEPTACLES AND LIGHTING, SUITE 207	20 1	1080				1000	1 20	MICROWAVE OVEN, SUITE 212	#12	28
29	#12	BATHROOM RECEPTACLES AND LIGHTING SUITE 207	20 1	720				1000	1 20	DISH WASHER AND GARBAGE DISPOSAL, SUITE 212	#12	30
31	#12	SUITE 206 PTAC 208V RECEPTACLE	20 2	1750				1080	1 20	RECEPTACLES AND LIGHTING, SUITE 212	#12	32
33	#12	SUITE 207 PTAC 208V RECEPTACLE	20 2	1750				720	1 20	BATHROOM RECEPTACLES AND LIGHTING SUITE 212	#12	34
35	#12	SUITE 211 PTAC 208V RECEPTACLE	20 2	1750				1750	2 20	SUITE 211 PTAC 208V RECEPTACLE	#12	36
37	#12	SUITE 212 PTAC 208V RECEPTACLE	20 2	1750				1750	2 20	SUITE 212 PTAC 208V RECEPTACLE	#12	38
39	#12	SUITE 210 PTAC 208V RECEPTACLE	20 2	1750				1750	2 20	SUITE 210 PTAC 208V RECEPTACLE	#12	40
41	#12	SUITE 210 PTAC 208V RECEPTACLE	20 2	1750				1750	2 20	SUITE 210 PTAC 208V RECEPTACLE	#12	42
SOLID NEUTRAL NEUTRAL WIRE (N)				TOTAL CONNECTED LOAD (VA) = 56,000			GROUND BUS GROUND WIRE (G)					
				AD = 18,070	BD = 18,930	CD = 19,000						

PANEL SCHEDULE												
PANEL: F23				MECHANICAL, ELECTRICAL, & PLUMBING ROOM 204 SECOND LEVEL				VOLTAGE: 208/120V, 200A, 3Ø, 4W/MLD SURFACE MOUNTED IV EQUIPMENT GND BAR 8ØD TYPE GO LOAD CENTER				
CKT NO	THHN WIRE SIZE	LOAD DESCRIPTION	BREAKER AMP POLE	LOAD (VA)	AS BS CS			LOAD (VA)	BREAKER AMP POLE	LOAD DESCRIPTION	THHN WIRE SIZE	CKT NO
1	#10	COOK TOP TWO BURNER, SUITE 220	30 1	2400				0	1 20	SPARE	#12	2
3	#10	COOK TOP TWO BURNER, SUITE 221	30 1	2400				0	1 20	SPARE	#12	4
5	#10	COOK TOP TWO BURNER, SUITE 222	30 1	2400				1500	1 20	REFRIGERATOR AND KITCHEN COUNTER RECEPTACLES, SUITE 220	#12	6
7	#10	COOK TOP TWO BURNER, SUITE 223	30 1	2400				1000	1 20	MICROWAVE OVEN, SUITE 220	#12	8
9	#10	COOK TOP TWO BURNER, SUITE 224	30 1	2400				1000	1 20	DISH WASHER AND GARBAGE DISPOSAL, SUITE 220	#12	10
11	#12	REFRIGERATOR AND KITCHEN COUNTER RECEPTACLES, SUITE 220	20 1	1500				1080	1 20	RECEPTACLES AND LIGHTING, SUITE 220	#12	12
13	#12	MICROWAVE OVEN, SUITE 220	20 1	1000				720	1 20	BATHROOM RECEPTACLES AND LIGHTING SUITE 220	#12	14
15	#12	DISH WASHER AND GARBAGE DISPOSAL, SUITE 220	20 1	1000				1500	1 20	REFRIGERATOR AND KITCHEN COUNTER RECEPTACLES, SUITE 221	#12	16
17	#12	RECEPTACLES AND LIGHTING, SUITE 220	20 1	1080				1000	1 20	MICROWAVE OVEN, SUITE 221	#12	18
19	#12	BATHROOM RECEPTACLES AND LIGHTING SUITE 220	20 1	720				1000	1 20	DISH WASHER AND GARBAGE DISPOSAL, SUITE 221	#12	20
21	#12	REFRIGERATOR AND KITCHEN COUNTER RECEPTACLES, SUITE 221	20 1	1500				1080	1 20	RECEPTACLES AND LIGHTING, SUITE 221	#12	22
23	#12	MICROWAVE OVEN, SUITE 221	20 1	1000				720	1 20	BATHROOM RECEPTACLES AND LIGHTING SUITE 221	#12	24
25	#12	DISH WASHER AND GARBAGE DISPOSAL, SUITE 221	20 1	1000				1500	1 20	REFRIGERATOR AND KITCHEN COUNTER RECEPTACLES, SUITE 222	#12	26
27	#12	RECEPTACLES AND LIGHTING, SUITE 221	20 1	1080				1000	1 20	MICROWAVE OVEN, SUITE 222	#12	28
29	#12	BATHROOM RECEPTACLES AND LIGHTING SUITE 221	20 1	720				1000	1 20	DISH WASHER AND GARBAGE DISPOSAL, SUITE 222	#12	30
31	#12	SUITE 220 PTAC 208V RECEPTACLE	20 2	1750				1080	1 20	RECEPTACLES AND LIGHTING, SUITE 222	#12	32
33	#12	SUITE 221 PTAC 208V RECEPTACLE	20 2	1750				720	1 20	BATHROOM RECEPTACLES AND LIGHTING SUITE 222	#12	34
35	#12	SUITE 221 PTAC 208V RECEPTACLE	20 2	1750				1750	2 20	SUITE 221 PTAC 208V RECEPTACLE	#12	36
37	#12	SUITE 222 PTAC 208V RECEPTACLE	20 2	1750				1750	2 20	SUITE 222 PTAC 208V RECEPTACLE	#12	38
39	#12	SUITE 222 PTAC 208V RECEPTACLE	20 2	1750				1750	2 20	SUITE 222 PTAC 208V RECEPTACLE	#12	40
41	#12	SUITE 222 PTAC 208V RECEPTACLE	20 2	1750				1750	2 20	SUITE 222 PTAC 208V RECEPTACLE	#12	42
SOLID NEUTRAL NEUTRAL WIRE (N)				TOTAL CONNECTED LOAD (VA) = 56,000			GROUND BUS GROUND WIRE (G)					
				AD = 18,070	BD = 18,930	CD = 19,000						

PANEL SCHEDULE												
PANEL: F24				MECHANICAL, ELECTRICAL, & PLUMBING ROOM 204 SECOND LEVEL				VOLTAGE: 208/120V, 200A, 3Ø, 4W/MLD SURFACE MOUNTED IV EQUIPMENT GND BAR 8ØD TYPE GO LOAD CENTER				
CKT NO	THHN WIRE SIZE	LOAD DESCRIPTION	BREAKER AMP POLE	LOAD (VA)	AS BS CS			LOAD (VA)	BREAKER AMP POLE	LOAD DESCRIPTION	THHN WIRE SIZE	CKT NO
1	#10	COOK TOP TWO BURNER, SUITE 201	30 1	2400				1500	1 20	REFRIGERATOR AND KITCHEN COUNTER RECEPTACLES, SUITE 209	#12	2
3	#10	COOK TOP TWO BURNER, SUITE 202	30 1	2400				1000	1 20	MICROWAVE OVEN, SUITE 209	#12	4
5	#10	COOK TOP TWO BURNER, SUITE 203	30 1	2400				1000	1 20	DISH WASHER AND GARBAGE DISPOSAL, SUITE 209	#12	6
7	#10	COOK TOP TWO BURNER, SUITE 204	30 1	2400				1080	1 20	RECEPTACLES AND LIGHTING, SUITE 209	#12	8
9	#10	COOK TOP TWO BURNER, SUITE 205	30 1	2400				720	1 20	BATHROOM RECEPTACLES AND LIGHTING SUITE 209	#12	10
11	#12	REFRIGERATOR AND KITCHEN COUNTER RECEPTACLES, SUITE 201	20 1	1500				1500	1 20	REFRIGERATOR AND KITCHEN COUNTER RECEPTACLES, SUITE 213	#12	12
13	#12	MICROWAVE OVEN, SUITE 201	20 1	1000				1000	1 20	MICROWAVE OVEN, SUITE 204	#12	14
15	#12	DISH WASHER AND GARBAGE DISPOSAL, SUITE 201	20 1	1000				1000	1 20	DISH WASHER AND GARBAGE DISPOSAL, SUITE 204	#12	16
17	#12	RECEPTACLES AND LIGHTING, SUITE 201	20 1	1080				1080	1 20	RECEPTACLES AND LIGHTING, SUITE 204	#12	18
19	#12	BATHROOM RECEPTACLES AND LIGHTING SUITE 201	20 1	720				720	1 20	BATHROOM RECEPTACLES AND LIGHTING SUITE 204	#12	20
21	#12	REFRIGERATOR AND KITCHEN COUNTER RECEPTACLES, SUITE 202	20 1	1500				1500	1 20	REFRIGERATOR AND KITCHEN COUNTER RECEPTACLES, SUITE 205	#12	22
23	#12	MICROWAVE OVEN, SUITE 202	20 1	1000				1000	1 20	MICROWAVE OVEN, SUITE 205	#12	24
25	#12	DISH WASHER AND GARBAGE DISPOSAL, SUITE 202	20 1	1000				1000	1 20	DISH WASHER AND GARBAGE DISPOSAL, SUITE 205	#12	26
27	#12	RECEPTACLES AND LIGHTING, SUITE 202	20 1	1080				1080	1 20	RECEPTACLES AND LIGHTING, SUITE 205	#12	28
29	#12	BATHROOM RECEPTACLES AND LIGHTING SUITE 202	20 1	720				720	1 20	BATHROOM RECEPTACLES AND LIGHTING SUITE 205	#12	30
31	#12	SUITE 201 PTAC 208V RECEPTACLE	20 2	1750				1750	2 20	SUITE 203 PTAC 208V RECEPTACLE IN BEDROOM	#12	32
33	#12	SUITE 202 PTAC 208V RECEPTACLE	20 2	1750				1750	2 20	SUITE 204 PTAC 208V RECEPTACLE	#12	34
35	#12	SUITE 202 PTAC 208V RECEPTACLE	20 2	1750				1750	2 20	SUITE 204 PTAC 208V RECEPTACLE	#12	36
37	#12	SUITE 202 PTAC 208V RECEPTACLE	20 2	1750				1750	2 20	SUITE 204 PTAC 208V RECEPTACLE	#12	38
39	#12	SUITE 203 PTAC 208V RECEPTACLE IN LIVING ROOM	20 2	1750				1750	2 20	SUITE 205 PTAC 208V RECEPTACLE	#12	40
41	#12	SUITE 203 PTAC 208V RECEPTACLE IN LIVING ROOM	20 2	1750				1750	2 20	SUITE 205 PTAC 208V RECEPTACLE	#12	42
SOLID NEUTRAL NEUTRAL WIRE (N)				TOTAL CONNECTED LOAD (VA) = 91,500			GROUND BUS GROUND WIRE (G)					
				AD = 18,820	BD = 20,680	CD = 19,000						

PANEL SCHEDULE												
PANEL: F24				MECHANICAL, ELECTRICAL, & PLUMBING ROOM 204 SECOND LEVEL				VOLTAGE: 208/120V, 200A, 3Ø, 4W/MLD SURFACE MOUNTED IV EQUIPMENT GND BAR 8ØD TYPE GO LOAD CENTER				
CKT NO	THHN WIRE SIZE	LOAD DESCRIPTION	BREAKER AMP POLE	LOAD (VA)	AS BS CS			LOAD (VA)	BREAKER AMP POLE	LOAD DESCRIPTION	THHN WIRE SIZE	CKT NO
1	#10	COOK TOP TWO BURNER, SUITE 201	30 1	2400				0	1 20	SPARE	#12	2
3	#10	COOK TOP TWO BURNER, SUITE 202	30 1	2400				0	1 20	SPARE	#12	4
5	#10	COOK TOP TWO BURNER, SUITE 203	30 1	2400				1500	1 20	REFRIGERATOR AND KITCHEN COUNTER RECEPTACLES, SUITE 210	#12	6
7	#10	COOK TOP TWO BURNER, SUITE 204	30 1	2400				1000	1 20	MICROWAVE OVEN, SUITE 211	#	

PANEL SCHEDULE												
PANEL: FB1 MECHANICAL, ELECTRICAL, 4 PLUMBING ROOM 204 SECOND LEVEL				VOLTAGE: 208/120V, 200A, 50, 4W XW/MLO ENCLOSURE: SURFACE MOUNTED IV EQUIPMENT 5ND BAR 50 D TYPE GO LOAD CENTER								
CKT NO	THHN WIRE SIZE	LOAD DESCRIPTION LOCATION	BREAKER AMP POLE	LOAD (VA)	AS BS GS			LOAD (VA)	BREAKER POLE AMP	LOAD DESCRIPTION LOCATION	THHN WIRE SIZE	CKT NO
					AS	BS	GS					
1	#12	DEDICATED RECEPTACLE NEAR STAIRS, OPPOSITE END OF BUILDING	20 1	1500				120	1 20	RECEPTACLES, MANT. ROOM AT OPPOSITE END OF BUILDINGS AND HALLWAY	#12	2
3	#12	DEDICATED RECEPTACLE NEAR STAIRS, OPPOSITE END OF BUILDING	20 1	1500				120	1 20	RECEPTACLES, LAUNDRY ROOM HOUSEKEEPING AND HALLWAY	#12	4
5		SPARE	20 1					180	1 20	RECEPTACLE, THIS ROOM	#12	6
7		SPARE	20 1					315	1 20	LIGHTING, THIS END OF HALL	#12	8
9		SPARE	20 1					315	1 20	LIGHTING, THIS EQUIPMENT ROOM	#12	10
11		SPARE	20 1					434	1 20	LIGHTING, HOUSEKEEPING, LAUNDRY AND ELEVATOR LOBBY	#12	12
13		SPARE	20 1					512	1 20	LIGHTS, CENTER OF HALL	#12	14
15	#12	ATTIC LIGHT AND RECEPTACLE	20 1	1000				644	1 20	LIGHTING, OPPOSITE END OF HALLWAY	#12	16
17		SPARE	20 1					626	1 20	LIGHTING, MAINTENANCE ROOM OPPOSITE END OF BUILDING	#12	18
19								912	1 20	LIGHTS, CENTER OF HALL	#12	20
21	#4/0	PANEL P32	175 3	20680				1000	1 20	ATTIC LIGHT AND RECEPTACLE	#12	22
23				19000				1000	1 20	ATTIC LIGHT AND RECEPTACLE	#12	24
25				18070				1000	1 20	ATTIC LIGHT AND RECEPTACLE	#12	26
27	#4/0	PANEL P33	200 3	18430				1000	1 20	ATTIC LIGHT AND RECEPTACLE	#12	28
29				14000				1	20	SPARE	#12	30
31				18070				3333			#12	32
33	#4/0	PANEL P34	200 3	18430				3333	3 60	2 1/2 TON HVAC UNIT, 3RD LEVEL, 10 KW HEAT	#6	34
35				14000				3333			#12	36
37				18070				18070			#12	38
39	#4/0	PANEL P35	175 3	18430				18430	3 175	PANEL P36	#4/0	40
41				14000				14000			#12	42
SOLID NEUTRAL NEUTRAL WIRE (N)				TOTAL CONNECTED LOAD (VA) = 306,961				GROUND BUS GROUND WIRE (G)				
				AD = 1100,480				BD = 105,912				CD = 100,575

PANEL SCHEDULE												
PANEL: FB2 MECHANICAL, ELECTRICAL, 4 PLUMBING ROOM 204 THIRD LEVEL				VOLTAGE: 208/120V, 200A, 50, 4W XW/MLO ENCLOSURE: SURFACE MOUNTED IV EQUIPMENT 5ND BAR 50 D TYPE GO LOAD CENTER								
CKT NO	THHN WIRE SIZE	LOAD DESCRIPTION LOCATION	BREAKER AMP POLE	LOAD (VA)	AS BS GS			LOAD (VA)	BREAKER POLE AMP	LOAD DESCRIPTION LOCATION	THHN WIRE SIZE	CKT NO
					AS	BS	GS					
1	#10	COOK TOP TWO BURNER, SUITE 306	30 1	2400				0	1 20	SPARE	#12	2
3	#10	COOK TOP TWO BURNER, SUITE 307	30 1	2400				0	1 20	SPARE	#12	4
5	#10	COOK TOP TWO BURNER, SUITE 310	30 1	2400				1500	1 20	REFRIGERATOR AND KITCHEN COUNTER RECEPTACLES, SUITE 310	#12	6
7	#10	COOK TOP TWO BURNER, SUITE 311	30 1	2400				1000	1 20	MICROWAVE OVEN, SUITE 310	#12	8
9	#10	COOK TOP TWO BURNER, SUITE 312	30 1	2400				1000	1 20	DISH WASHER AND GARBAGE DISPOSAL, SUITE 310	#12	10
11	#12	REFRIGERATOR AND KITCHEN COUNTER RECEPTACLES, SUITE 306	20 1	1500				1080	1 20	RECEPTACLES AND LIGHTING, SUITE 310	#12	12
13	#12	MICROWAVE OVEN, SUITE 306	20 1	1000				120	1 20	BATHROOM RECEPTACLES AND LIGHTING SUITE 310	#12	14
15	#12	DISH WASHER AND GARBAGE DISPOSAL, SUITE 306	20 1	1000				1500	1 20	REFRIGERATOR AND KITCHEN COUNTER RECEPTACLES, SUITE 311	#12	16
17	#12	RECEPTACLES AND LIGHTING, SUITE 306	20 1	1080				1000	1 20	MICROWAVE OVEN, SUITE 311	#12	18
19	#12	BATHROOM RECEPTACLES AND LIGHTING SUITE 306	20 1	120				1000	1 20	DISH WASHER AND GARBAGE DISPOSAL, SUITE 311	#12	20
21	#12	REFRIGERATOR AND KITCHEN COUNTER RECEPTACLES, SUITE 307	20 1	1500				1080	1 20	RECEPTACLES AND LIGHTING, SUITE 311	#12	22
23	#12	MICROWAVE OVEN, SUITE 307	20 1	1000				120	1 20	BATHROOM RECEPTACLES AND LIGHTING SUITE 311	#12	24
25	#12	DISH WASHER AND GARBAGE DISPOSAL, SUITE 307	20 1	1000				1500	1 20	REFRIGERATOR AND KITCHEN COUNTER RECEPTACLES, SUITE 312	#12	26
27	#12	RECEPTACLES AND LIGHTING, SUITE 307	20 1	1080				1000	1 20	MICROWAVE OVEN, SUITE 312	#12	28
29	#12	BATHROOM RECEPTACLES AND LIGHTING SUITE 307	20 1	120				1000	1 20	DISH WASHER AND GARBAGE DISPOSAL, SUITE 312	#12	30
31	#12	SUITE 308 PTAC 208V RECEPTACLE	20 2	1750				1080	1 20	RECEPTACLES AND LIGHTING, SUITE 312	#12	32
33	#12	SUITE 309 PTAC 208V RECEPTACLE	20 2	1750				120	1 20	BATHROOM RECEPTACLES AND LIGHTING SUITE 312	#12	34
35	#12	SUITE 301 PTAC 208V RECEPTACLE	20 2	1750				1750	2 20	SUITE 311 PTAC 208V RECEPTACLE	#12	36
37	#12	SUITE 302 PTAC 208V RECEPTACLE	20 2	1750				1750	2 20	SUITE 312 PTAC 208V RECEPTACLE	#12	38
39	#12	SUITE 310 PTAC 208V RECEPTACLE	20 2	1750				1750	2 20	SUITE 312 PTAC 208V RECEPTACLE	#12	40
41	#12	SUITE 310 PTAC 208V RECEPTACLE	20 2	1750				1750	2 20	SUITE 312 PTAC 208V RECEPTACLE	#12	42
SOLID NEUTRAL NEUTRAL WIRE (N)				TOTAL CONNECTED LOAD (VA) = 56,000				GROUND BUS GROUND WIRE (G)				
				AD = 18,070				BD = 18,430				CD = 19,000

PANEL SCHEDULE												
PANEL: FB3 MECHANICAL, ELECTRICAL, 4 PLUMBING ROOM 204 THIRD LEVEL				VOLTAGE: 208/120V, 200A, 50, 4W XW/MLO ENCLOSURE: SURFACE MOUNTED IV EQUIPMENT 5ND BAR 50 D TYPE GO LOAD CENTER								
CKT NO	THHN WIRE SIZE	LOAD DESCRIPTION LOCATION	BREAKER AMP POLE	LOAD (VA)	AS BS GS			LOAD (VA)	BREAKER POLE AMP	LOAD DESCRIPTION LOCATION	THHN WIRE SIZE	CKT NO
					AS	BS	GS					
1	#10	COOK TOP TWO BURNER, SUITE 320	30 1	2400				0	1 20	SPARE	#12	2
3	#10	COOK TOP TWO BURNER, SUITE 321	30 1	2400				0	1 20	SPARE	#12	4
5	#10	COOK TOP TWO BURNER, SUITE 322	30 1	2400				1500	1 20	REFRIGERATOR AND KITCHEN COUNTER RECEPTACLES, SUITE 322	#12	6
7	#10	COOK TOP TWO BURNER, SUITE 323	30 1	2400				1000	1 20	MICROWAVE OVEN, SUITE 322	#12	8
9	#10	COOK TOP TWO BURNER, SUITE 324	30 1	2400				1000	1 20	DISH WASHER AND GARBAGE DISPOSAL, SUITE 322	#12	10
11	#12	REFRIGERATOR AND KITCHEN COUNTER RECEPTACLES, SUITE 320	20 1	1500				1080	1 20	RECEPTACLES AND LIGHTING, SUITE 322	#12	12
13	#12	MICROWAVE OVEN, SUITE 320	20 1	1000				120	1 20	BATHROOM RECEPTACLES AND LIGHTING SUITE 322	#12	14
15	#12	DISH WASHER AND GARBAGE DISPOSAL, SUITE 320	20 1	1000				1500	1 20	REFRIGERATOR AND KITCHEN COUNTER RECEPTACLES, SUITE 323	#12	16
17	#12	RECEPTACLES AND LIGHTING, SUITE 320	20 1	1080				1000	1 20	MICROWAVE OVEN, SUITE 323	#12	18
19	#12	BATHROOM RECEPTACLES AND LIGHTING SUITE 320	20 1	120				1000	1 20	DISH WASHER AND GARBAGE DISPOSAL, SUITE 323	#12	20
21	#12	REFRIGERATOR AND KITCHEN COUNTER RECEPTACLES, SUITE 321	20 1	1500				1080	1 20	RECEPTACLES AND LIGHTING, SUITE 323	#12	22
23	#12	MICROWAVE OVEN, SUITE 321	20 1	1000				120	1 20	BATHROOM RECEPTACLES AND LIGHTING SUITE 323	#12	24
25	#12	DISH WASHER AND GARBAGE DISPOSAL, SUITE 321	20 1	1000				1500	1 20	REFRIGERATOR AND KITCHEN COUNTER RECEPTACLES, SUITE 324	#12	26
27	#12	RECEPTACLES AND LIGHTING, SUITE 321	20 1	1080				1000	1 20	MICROWAVE OVEN, SUITE 324	#12	28
29	#12	BATHROOM RECEPTACLES AND LIGHTING SUITE 321	20 1	120				1000	1 20	DISH WASHER AND GARBAGE DISPOSAL, SUITE 324	#12	30
31	#12	SUITE 320 PTAC 208V RECEPTACLE	20 2	1750				1080	1 20	RECEPTACLES AND LIGHTING, SUITE 324	#12	32
33	#12	SUITE 321 PTAC 208V RECEPTACLE	20 2	1750				120	1 20	BATHROOM RECEPTACLES AND LIGHTING SUITE 324	#12	34
35	#12	SUITE 321 PTAC 208V RECEPTACLE	20 2	1750				1750	2 20	SUITE 323 PTAC 208V RECEPTACLE	#12	36
37	#12	SUITE 322 PTAC 208V RECEPTACLE	20 2	1750				1750	2 20	SUITE 324 PTAC 208V RECEPTACLE	#12	38
39	#12	SUITE 322 PTAC 208V RECEPTACLE	20 2	1750				1750	2 20	SUITE 324 PTAC 208V RECEPTACLE	#12	40
41	#12	SUITE 322 PTAC 208V RECEPTACLE	20 2	1750				1750	2 20	SUITE 324 PTAC 208V RECEPTACLE	#12	42
SOLID NEUTRAL NEUTRAL WIRE (N)				TOTAL CONNECTED LOAD (VA) = 56,000				GROUND BUS GROUND WIRE (G)				
				AD = 18,070				BD = 18,430				CD = 19,000

PANEL SCHEDULE												
PANEL: FB4 MECHANICAL, ELECTRICAL, 4 PLUMBING ROOM 204 THIRD LEVEL				VOLTAGE: 208/120V, 200A, 50, 4W XW/MLO ENCLOSURE: SURFACE MOUNTED IV EQUIPMENT 5ND BAR 50 D TYPE GO LOAD CENTER								
CKT NO	THHN WIRE SIZE	LOAD DESCRIPTION LOCATION	BREAKER AMP POLE	LOAD (VA)	AS BS GS			LOAD (VA)	BREAKER POLE AMP	LOAD DESCRIPTION LOCATION	THHN WIRE SIZE	CKT NO
					AS	BS	GS					
1	#10	COOK TOP TWO BURNER, SUITE 301	30 1	2400				1800	1 20	REFRIGERATOR AND KITCHEN COUNTER RECEPTACLES, SUITE 303	#12	2
3	#10	COOK TOP TWO BURNER, SUITE 302	30 1	2400				1000	1 20	MICROWAVE OVEN, SUITE 303	#12	4
5	#10	COOK TOP TWO BURNER, SUITE 303	30 1	2400				1000	1 20	DISH WASHER AND GARBAGE DISPOSAL, SUITE 303	#12	6
7	#10	COOK TOP TWO BURNER, SUITE 304	30 1	2400				1080	1 20	RECEPTACLES AND LIGHTING, SUITE 303	#12	8
9	#10	COOK TOP TWO BURNER, SUITE 305	30 1	2400				120	1 20	BATHROOM RECEPTACLES AND LIGHTING SUITE 303	#12	10
11	#12	REFRIGERATOR AND KITCHEN COUNTER RECEPTACLES, SUITE 301	20 1	1500				1500	1 20	REFRIGERATOR AND KITCHEN COUNTER RECEPTACLES, SUITE 304	#12	12
13	#12	MICROWAVE OVEN, SUITE 301	20 1	1000				1000	1 20	MICROWAVE OVEN, SUITE 304	#12	14
15	#12	DISH WASHER AND GARBAGE DISPOSAL, SUITE 301	20 1	1000				1000	1 20	DISH WASHER AND GARBAGE DISPOSAL, SUITE 304	#12	16
17	#12	RECEPTACLES AND LIGHTING, SUITE 301	20 1	1080				1080	1 20	RECEPTACLES AND LIGHTING, SUITE 304	#12	18
19	#12	BATHROOM RECEPTACLES AND LIGHTING SUITE 301	20 1	120				120	1 20	BATHROOM RECEPTACLES AND LIGHTING SUITE 304	#12	20
21	#12	REFRIGERATOR AND KITCHEN COUNTER RECEPTACLES, SUITE 302	20 1	1500				1500	1 20	REFRIGERATOR AND KITCHEN COUNTER RECEPTACLES, SUITE 305	#12	22
23	#12	MICROWAVE OVEN, SUITE 302	20 1	1000				1000	1 20	MICROWAVE OVEN, SUITE 305	#12	24
25	#12	DISH WASHER AND GARBAGE DISPOSAL, SUITE 302	20 1	1000				1000	1 20	DISH WASHER AND GARBAGE DISPOSAL, SUITE 305	#12	26
27	#12	RECEPTACLES AND LIGHTING, SUITE 302	20 1	1080				1080	1 20	RECEPTACLES AND LIGHTING, SUITE 305	#12	28
29	#12	BATHROOM RECEPTACLES AND LIGHTING SUITE 302	20 1	120				120	1 20	BATHROOM RECEPTACLES AND LIGHTING SUITE 305	#12	30
31	#12	SUITE 301 PTAC 208V RECEPTACLE	20 2	1750				1750	2 20	SUITE 303 PTAC, 208V RECEPTACLE IN BEDROOM	#12	32
33	#12	SUITE 302 PTAC 208V RECEPTACLE	20 2	1750				1750	2 20	SUITE 304 PTAC 208V RECEPTACLE	#12	34
35	#12	SUITE 302 PTAC 208V RECEPTACLE	20 2	1750				1750	2 20	SUITE 304 PTAC 208V RECEPTACLE	#12	36
37	#12	SUITE 302 PTAC 208V RECEPTACLE	20 2	1750				1750	2 20	SUITE 304 PTAC 208V RECEPTACLE	#12	38
39	#12	SUITE 303 PTAC 208V RECEPTACLE	20 2	1750				1750	2 20	SUITE 305 PTAC, 208V RECEPTACLE IN LIVING ROOM	#12	40
41	#12	SUITE 303 PTAC 208V RECEPTACLE	20 2	1750				1750	2 20	SUITE 305 PTAC, 208V RECEPTACLE	#12	42
SOLID NEUTRAL NEUTRAL WIRE (N)				TOTAL CONNECTED LOAD (VA) = 54,500				GROUND BUS GROUND WIRE (G)				
				AD = 18,820				BD = 20,680				CD = 19,000

PANEL SCHEDULE												
PANEL: FB4 MECHANICAL, ELECTRICAL, 4 PLUMBING ROOM 204 THIRD LEVEL				VOLTAGE: 208/120V, 200A, 50, 4W XW/MLO ENCLOSURE: SURFACE MOUNTED IV EQUIPMENT 5ND BAR 50 D TYPE GO LOAD CENTER								
CKT NO	THHN WIRE SIZE	LOAD DESCRIPTION LOCATION	BREAKER AMP POLE	LOAD (VA)	AS BS GS			LOAD (VA)	BREAKER POLE AMP	LOAD DESCRIPTION LOCATION	THHN WIRE SIZE	CKT NO
					AS	BS	GS					
1	#10	COOK TOP TWO BURNER, SUITE 313	30 1	2400				0	1 20	SPARE	#12	2
3	#10	COOK TOP TWO BURNER, SUITE 316	30 1	2400				0	1 20	SPARE	#12	4
5	#10	COOK TOP TWO BURNER, SUITE 317	30 1	2400				1500	1 20	REFRIGERATOR AND KITCHEN COUNTER RECEPTACLES, SUITE 317	#12	6
7	#10	COOK TOP TWO BURNER, SUITE 318	30									