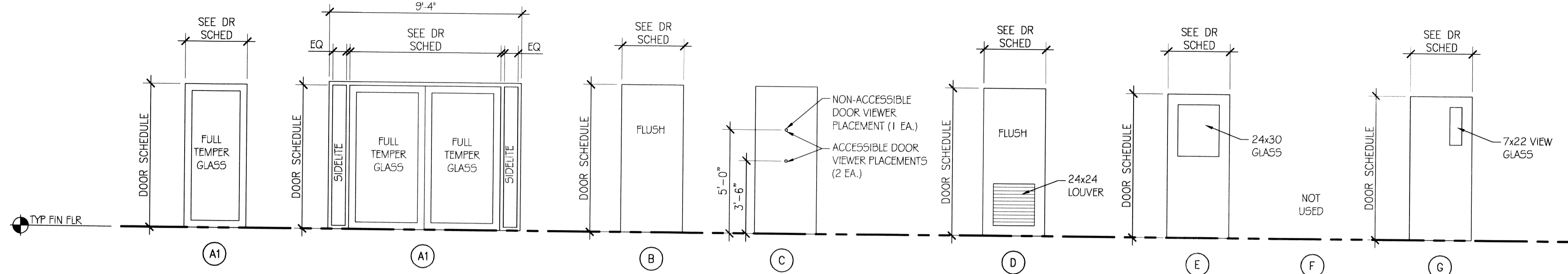
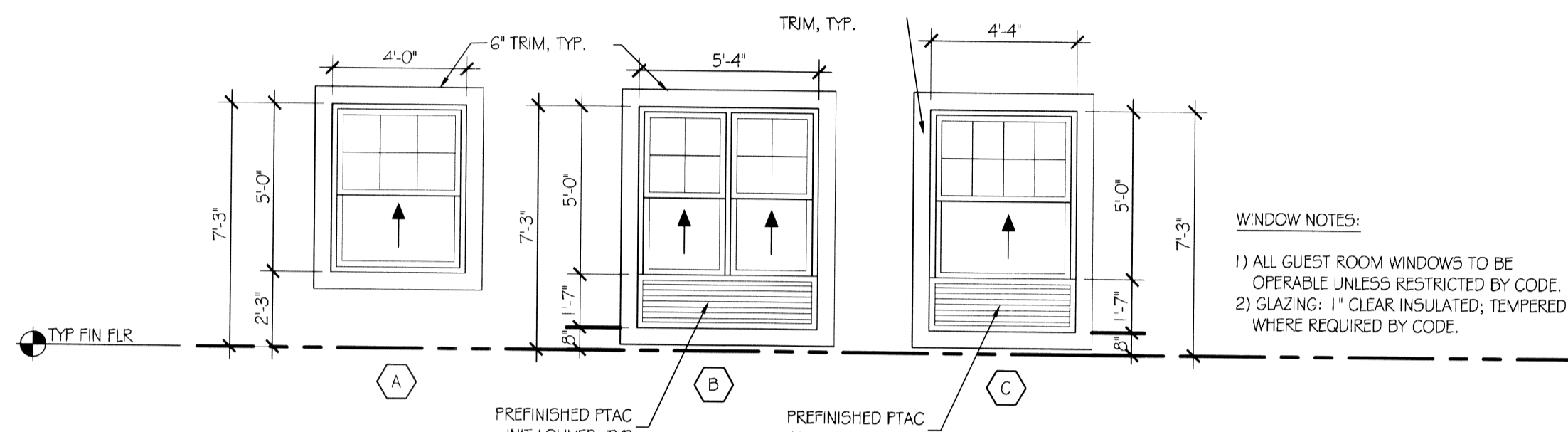


DOOR TYPES/SCHEDULE



WINDOW TYPES/SCHEDULE



FINISH SCHEDULE ABBREVIATIONS:

- ACT = ACOUSTICAL CEILING TILE
- ATP = ACRYLIC TEXTURED PAINT
- CPAD = CARPET PAD
- CPT = CARPET
- CPTB = CARPET BASE
- CRT = CONCRETE
- CT = CERAMIC TILE
- CTB = CERAMIC TILE BASE
- GYP.BD. = GYPSUM BOARD
- PT = PAINTED KNOCKDOWN
- RCB = RUBBER COVE BASE
- RCP = REFLECTED CEILING PLANK
- SV = SHEET VINYL
- VYL = VINYL WALL COVERING
- WDF = RESILIENT WOOD FLOORING

NOTE: VERIFY ALL FINISHES WITH MAIN STAY SUITES SPECIFICATIONS.

ROOM FINISH SCHEDULE

NO.	ROOM NAME	FLOOR	BASE	SPECIALTY ITEMS			WALLS							
				CR	CM	WC	NORTH		SOUTH		EAST		WEST	
							MAT'L	FINISH	MAT'L	FINISH	MAT'L	FINISH	MAT'L	FINISH
PUBLIC # BACK OF HOUSE-1ST FLOOR														
100	VESTIBULE	CT	CTB	-	-	-	ATP	-	ATP	-	ATP	-	ATP	-
101	LOBBY	CPT/ACT	CPTB/CTB	-	-	-	VYL	-	VYL	-	VYL	-	VYL	-
102	RECEPTION	CPT	RCB	-	-	-	VYL	-	VYL	-	VYL	-	VYL	-
103	WORK ROOM	CPT	CPTB	-	-	-	VYL	-	VYL	-	VYL	-	VYL	-
104	LOUNGE/BAR	CT	CTB	-	-	-	ATP	-	ATP	-	ATP	-	ATP	-
105	LOUNGE GAMING ROOM	CT	CTB	-	-	-	ATP	-	ATP	-	ATP	-	ATP	-
106	STORE/SUNDRY	CPT	CPTB	-	-	-	VYL	-	VYL	-	VYL	-	VYL	-
107	LAUNDRY	CRT	RCB	-	-	-	PT	EGGSHELL	PT	EGGSHELL	PT	EGGSHELL	PT	EGGSHELL
108	LINEN STORAGE	CRT	RCB	-	-	-	PT	EGGSHELL	PT	EGGSHELL	PT	EGGSHELL	PT	EGGSHELL
109	MECHANICAL ROOM	CRT	RCB	-	-	-	PT	EGGSHELL	PT	EGGSHELL	PT	EGGSHELL	PT	EGGSHELL
113	STAIR A	SV	RCB	-	-	-	ATP	-	ATP	-	ATP	-	ATP	-
114	ELEC. ROOM	CRT	RCB	-	-	-	PT	EGGSHELL	PT	EGGSHELL	PT	EGGSHELL	PT	EGGSHELL
118	WATER HEATER ROOM	CRT	-	-	-	-	PT	-	PT	-	PT	-	PT	-
119	MANAGER OFFICE	CPT	CPTB	-	-	-	VYL	-	VYL	-	VYL	-	VYL	-
120	PORCH CHAIRS STORAGE	CRT	-	-	-	-	PT	-	PT	-	PT	-	PT	-
121	GUEST LAUNDRY	CT	RCB	-	-	-	VYL	-	VYL	-	VYL	-	VYL	-
122	HALL	CPT	CPTB	PT	-	-	ATP	-	ATP	-	ATP	-	ATP	-
123	BREAK AREA	SV	RCB	-	-	-	PT	-	PT	-	PT	-	PT	-
124	COMMUNITY ROOM	CPT	CPTB	-	-	-	VYL	-	VYL	-	VYL	-	VYL	-
125	ELEVATOR LOBBY	CPT	CPTB	-	-	-	VYL	-	VYL	-	VYL	-	VYL	-
126	ELEVATOR EQUIPMENT	CRT	RCB	-	-	-	PT	EGGSHELL	PT	EGGSHELL	PT	EGGSHELL	PT	EGGSHELL
127	FOOD PANTRY	CT	CTB	-	-	-	PT	-	PT	-	PT	-	PT	-
128	MEN'S RESTROOM	CT	CTB	-	-	-	VYL	-	VYL	-	VYL	-	VYL	-
129	WOMEN'S RESTROOM	CT	CTB	-	-	-	VYL	-	VYL	-	VYL	-	VYL	-
130	MAINTENANCE	CRT	RCB	-	-	-	PT	EGGSHELL	PT	EGGSHELL	PT	EGGSHELL	PT	EGGSHELL
131	EXERCISE ROOM	CPT	RCB	-	-	-	VYL	-	VYL	-	VYL	-	VYL	-
132	CORRIDOR	CPT	CPTB	PT	-	-	ATP	-	ATP	-	ATP	-	ATP	-
136	STAIR B	SV	RCB	-	-	-	ATP	-	ATP	-	ATP	-	ATP	-
137	MUD ROOM	CT	CTB	-	-	-	VYL	-	VYL	-	VYL	-	VYL	-
140	CONFERENCE ROOM	CPT	CPTB	-	-	-	VYL	-	VYL	-	VYL	-	VYL	-
141	CONFERENCE ROOM	CPT	CPTB	-	-	-	VYL	-	VYL	-	VYL	-	VYL	-
142	JANITOR	CRT	RCB	-	-	-	PT	EGGSHELL	PT	EGGSHELL	PT	EGGSHELL	PT	EGGSHELL
143	CORRIDOR	CPT	CPTB	PT	-	-	ATP	-	ATP	-	ATP	-	ATP	-
SECOND & THIRD FLOOR PUBLIC & HOUSE														
200/300	ELEVATOR LOBBY	CPT	CPTB	-	-	-	VYL	-	VYL	-	VYL	-	VYL	-
208/308	STAIR A	SV	RCB	-	-	-	ATP	-	ATP	-	ATP	-	ATP	-
209/309	ELECTRICAL/T. ROOM	CRT	RCB	-	-	-	PT	EGGSHELL	PT	EGGSHELL	PT	EGGSHELL	PT	EGGSHELL
214/314	GUEST LAUNDRY	CT	RCB	-	-	-	VYL	-	VYL	-	VYL	-	VYL	-
215/315	HOUSEKEEPING	CRT	RCB	-	-	-	PT	EGGSHELL	PT	EGGSHELL	PT	EGGSHELL	PT	EGGSHELL
224/324	MAINTENANCE	CRT	RCB	-	-	-	PT	EGGSHELL	PT	EGGSHELL	PT	EGGSHELL	PT	EGGSHELL
225/325	ICE/STENDING	CT	CTB	-	-	-	ATP	-	ATP	-	ATP	-	ATP	-
226/326	STAIR B	SV	RCB	-	-	-	ATP	-	ATP	-	ATP	-	ATP	-
233/333	CORRIDOR	CPT	CPTB	PT	-	-	ATP	-	ATP	-	ATP	-	ATP	-
234/334	CORRIDOR	CPT	CPTB	PT	-	-	ATP	-	ATP	-	ATP	-	ATP	-
ALL GUEST ROOMS-ALL FLOORS														
-	KITCHENETTE	WDF	RCB	-	-	-	PT	EGGSHELL	PT	EGGSHELL	PT	EGGSHELL	PT	EGGSHELL
-	LIVING ROOM AREA	CPT	CPTB	-	-	-	PT	EGGSHELL	PT	EGGSHELL	PT	EGGSHELL	PT	EGGSHELL
-	SLEEPING AREA	CPT	CPTB	-	-	-	PT	EGGSHELL	PT	EGGSHELL	PT	EGGSHELL	PT	EGGSHELL
-	DRESSING AREA	CPT	CPTB	-	-	-	PT	EGGSHELL	PT	EGGSHELL	PT	EGGSHELL	PT	EGGSHELL
-	BATHROOM	CT	CTB	-	-	-	PT	EGGSHELL	PT	EGGSHELL	PT	EGGSHELL	PT	EGGSHELL
-	CLOSET	CPT	CPTB	-	-	-	PT	EGGSHELL	PT	EGGSHELL	PT	EGGSHELL	PT	EGGSHELL

DOOR SCHEDULE

MAP #	LOCATION	W	H	THK.	EL. CV	DOOR MAT.	DOOR FINISH	HDW. SET	FRAME MATERIAL	GAUGE	WALL SIZE	PIRF. PATTERN	NOTES
GR1	GUEST ENTRY	3-0	6-0	1-3/4	C	SCW	FLAM	T1B	REDIFLEX/KERF	18	4-7/8	20	
GR2	GUEST BATH	3-0	6-0	1-3/4	B	SCW	FLAM	T2C	REDIFLEX	18	4-7/8	20	
GR1-ACC	GUEST ENTRY ACCESSIBLE	3-0	6-0	1-3/4	C	SCW	FLAM	T1C	REDIFLEX/KERF	18	4-7/8	20	
GR2-ACC	ACCESSIBLE GUEST BATH	3-0	6-0	1-3/4	B	SCW	FLAM	T2E	REDIFLEX	18	4-7/8	20	
COMM	COMMUNICATING ROOMS	3-0	6-0	1-3/4	B	SCW	FLAM	T5	REDIFRAME	18	8-1/8	20	COMM LOCK/DEADBLT HARDWARE BY MANUFACTURER
GR3	SLIMFOLD MIRROR CLOSET DOOR PAIRS	5-0	6-0			ALUM	MIRROR	MFG	ALUM OVERLAY				HARDWARE BY MANUFACTURER
1st FLOOR													
100	ENTRY	6-0	7-5	1-3/4	A1	ALUM		T15C	ALUM				CLR TEMPERED GLASS
101	VESTIBULE	6-0	7-5	1-3/4	A1	ALUM		T15C	ALUM				CLR TEMPERED GLASS
102	RECEPTION	3-0	6-0	1-3/4	G	SCW	FLAM	T26C	REDIFLEX	18	4-7/8		
103	WORK ROOM	3-0	6-0	1-3/4	B	SCW	FLAM	T26B	REDIFLEX	18	4-7/8		
104A	LOUNGE	3-0	7-6	1-3/4	A	ALUM	ALUM	T12B	ALUM				FULL GLASS
104B	LOUNGE	3-0	7-6	1-3/4	A	ALUM	ALUM	T12B	ALUM				FULL GLASS
105	STORE	3-0	6-0	1-3/4	G	SCW	FLAM	T26C	REDIFLEX	18	4-7/8		7X22 LITE
107	LAUNDRY RM	3-0	6-0	1-3/4	B	HM	PRIMED	T17A	REDIFLEX/KERF	18	4-7/8		
109	MECHANICAL	3-0	6-0	1-3/4	D	HM	PRIMED	T16B	REDIFLEX/KERF	18	4-7/8		
113A	INTERIOR STAIRS	3-0	6-0	1-3/4	G	HM	PRIMED	T10A	REDIFLEX/KERF	18	6-3/4	60	7X22 LITE
113B	EXTERIOR STAIRS	3-0	6-0	1-3/4	B	HM	PRIMED	T11A	REDIFLEX/KERF	18	6-3/4	60	EXIT ONLY
113C	CORRIDOR ENTRY	3-0	7-6	1-3/4	A	ALUM	ALUM	T12B	ALUM		6-3/4		TEMPERED
114	ELECTRICAL	3-0	6-0	1-3/4	B	HM	PRIMED	T16B	REDIFLEX/KERF	18	4-7/8	60	
118	WATER ROOM	3-0	6-0	1-3/4	B	HM	PRIMED	T18	REDIFLEX/KERF	18	6-3/4	60	
119	MANAGER	3-0	6-0	1-3/4	B	SCW	FLAM	T26C	REDIFLEX/KERF	18	4-7/8		
119A	MANAGER CLOSET	3-0	6-0	1-3/4	B	SCW	FLAM	T27C	REDIFLEX	18	4-7/8		24X24 LOUVER
119B	MANAGER	3-0	6-0	1-3/4	G	SCW	FLAM	T26C	REDIFLEX/KERF	18	4-7/8		7X22 LITE
120	PORCH CHAIRS	3-0	6-0	1-3/4	B	HM	PRIMED	T18	REDIFLEX/KERF	18	6-3/4	60	
121	GUEST LAUNDRY	3-0	6-0	1-3/4	G	HM	PRIMED	T17A	REDIFLEX/KERF	18	4-7/8	60	
123	BREAKROOM	3-0	6-0	1-3/4	E	SCW	FLAM	T28A	REDIFLEX	18	4-7/8		24X30 LITE
124	COMMUNITY RM	3-0	6-0	1-3/4	A	ALUM	FG	T12B	ALUM				FULL GLASS
125	ELEV. EQUIPMENT	3-0	6-0	1-3/4	B	HM	PRIMED	T18	REDIFLEX/KERF	18	6-3/4	60	
126	PANTRY ROOM	3-0	6-0	1-3/4	B	SCW	FLAM	T27B	REDIFLEX/KERF	18	4-7/8		
128	MEN'S ROOM	3-0	6-0	1-3/4	B	SCW	FLAM	T23A	REDIFLEX/KERF	18	4-7/8		
129	WOMEN'S ROOM	3-0	6-0	1-3/4	B	SCW	FLAM	T23A	REDIFLEX/KERF	18	4-7/8		
130	STORAGE	3-0	6-0	1-3/4	B	HM	PRIMED	T16B	REDIFLEX/KERF	18	6-3/4		
131	EXERCISE ROOM	3-0	6-0	1-3/4	E	SCW	FLAM	T25B	REDIFLEX/KERF	18	4-7/8		24X30 LITE
136A	INTERIOR STAIRS	3-0	6-0	1-3/4	G	HM	PRIMED	T10A	REDIFLEX/KERF	18	6-3/4	60	7X22 LITE
136B	EXTERIOR STAIRS	3-0	6-0	1-3/4	B	HM	PRIMED	T11A	REDIFLEX/KERF	18	6-3/4	60	EXIT ONLY
136C	CORRIDOR ENTRY	3-0	7-6	1-3/4	A	ALUM	ALUM	T12B	ALUM		6-3/4		TEMPERED GLASS
137	MUD ROOM	3-0	6-0	1-3/4	B	HM	PRIMED	T16B	REDIFLEX/KERF	18	4-7/8		
????	EXT POOL STORAGE	3-0	6-0	1-3/4	D	HM	PRIMED	T21B	REDIFLEX/KERF	18	6-3/4		24X24 LOUVER
????	POOL MECHANICAL	3-0	6-0	1-3/4	D	HM	PRIMED	T21B	REDIFLEX/KERF	18	6-3/4		24X24 LOUVER
2nd FLOOR													
208	INTERIOR STAIRS	3-0	6-0	1-3/4	G	HM	PRIMED	T10A	REDIFLEX/KERF	18	6-3/4	60	7X22 LITE
209	ELEC/T.	3-0	6-0	1-3/4	B	HM	PRIMED	T16B	REDIFLEX/KERF	18	4-7/8	60	
214</													