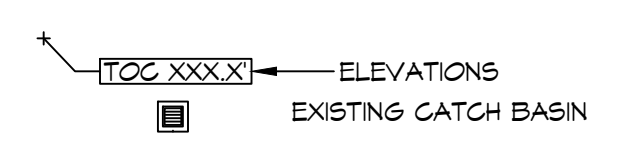


DRAINAGE & UTILITY SITE PLAN
SCALE: 1" = 10'-0"

DRAINAGE NOTES

- CONTRACTOR SHALL PROVIDE ALL LABOR, MATERIAL, TRANSPORTATION, SUPERVISION, CLEAN-UP, SERVICES, AND EQUIPMENT FOR A COMPLETE OPERATING SYSTEM.
- PROVIDE POSITIVE DRAINAGE AWAY FROM BLDG AND SHALL SLOPE TOWARDS EXISTING DITCHES AND CULVERTS.

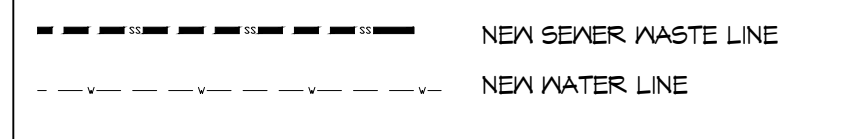
DRAINAGE LEGEND



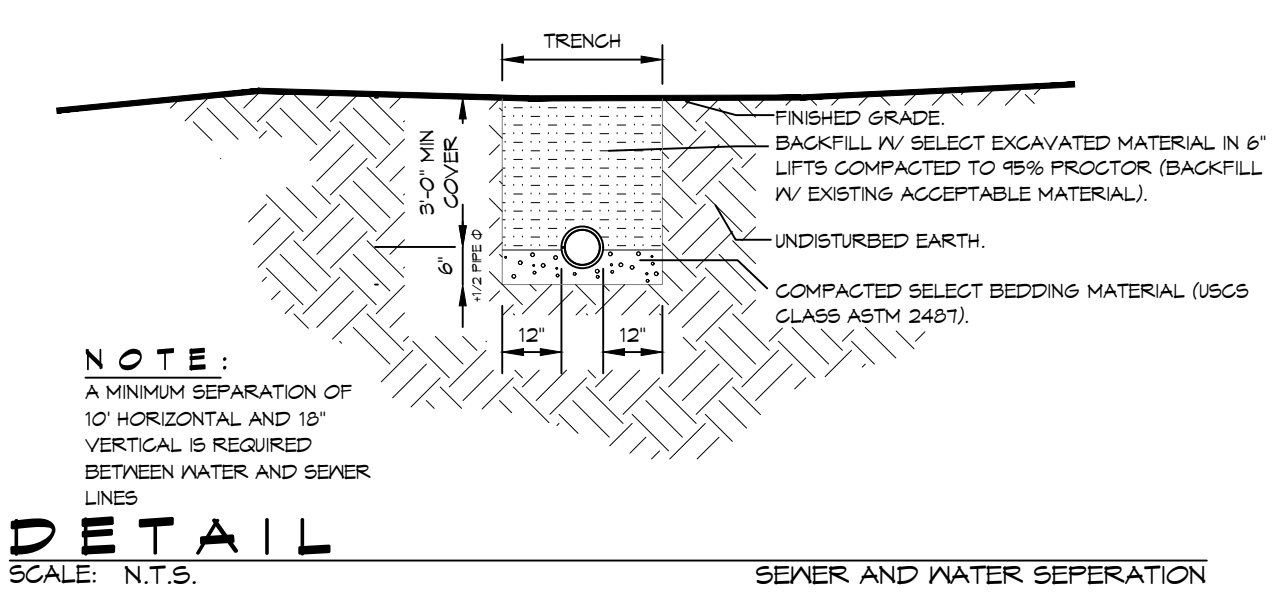
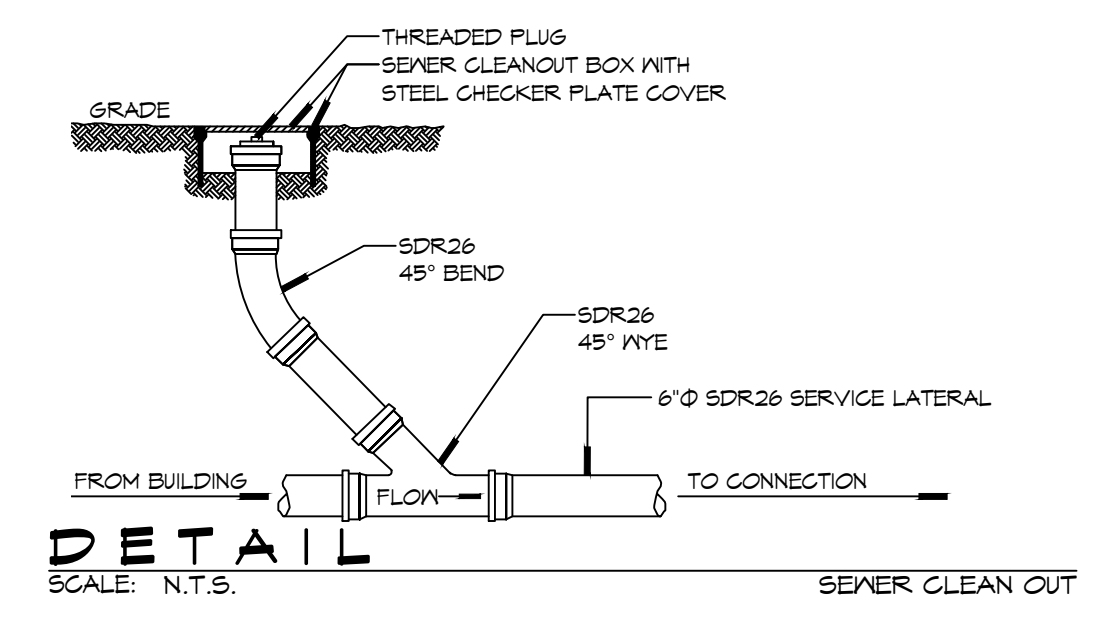
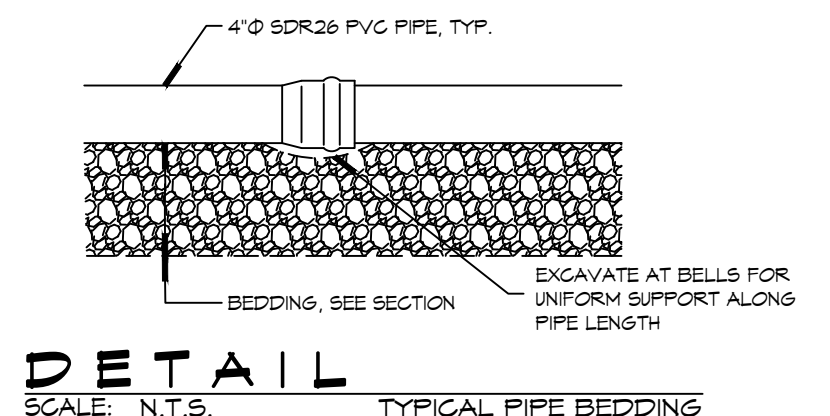
GENERAL SITE NOTES

- PROVIDE ALL LABOR, MATERIAL AND EQUIPMENT FOR A COMPLETE OPERATING SYSTEM. CONTRACTOR IS TO FIELD VERIFY ALL EXISTING UTILITY LOCATIONS, ELEVATIONS, AND INVERTS PRIOR TO COMMENCING ANY WORK. CONTRACTOR SHALL PAY NECESSARY FEES FOR THE UTILITIES CONNECTIONS.
- CONTRACTOR TO BE RESPONSIBLE TO VERIFY ANY INVERTS AND SET NEW INVERTS OF SEWAGE AND DRAINAGE PIPES.
- ALL WORK AND MATERIAL TO COMPLY STRICTLY TO THE LATEST LOCAL CITY PARISH, STATE, AND NATIONAL GOVERNING CODES.
- SEWAGE LINES 3" AND SMALLER SHALL BE SLOPED 1/4" PER FOOT AND LINES THAT ARE 4" AND LARGER SHALL BE SLOPED 1/8" PER FOOT.
- CONTRACTOR SHALL CONTACT LOUISIANA ONE CALL PRIOR TO COMMENCEMENT OF SITE EXCAVATION.
- CONTACT BILLY PALMISANO WITH CITY OF SLIDELL PUBLIC UTILITY DEPARTMENT FOR TAPS. (985-646-4291)

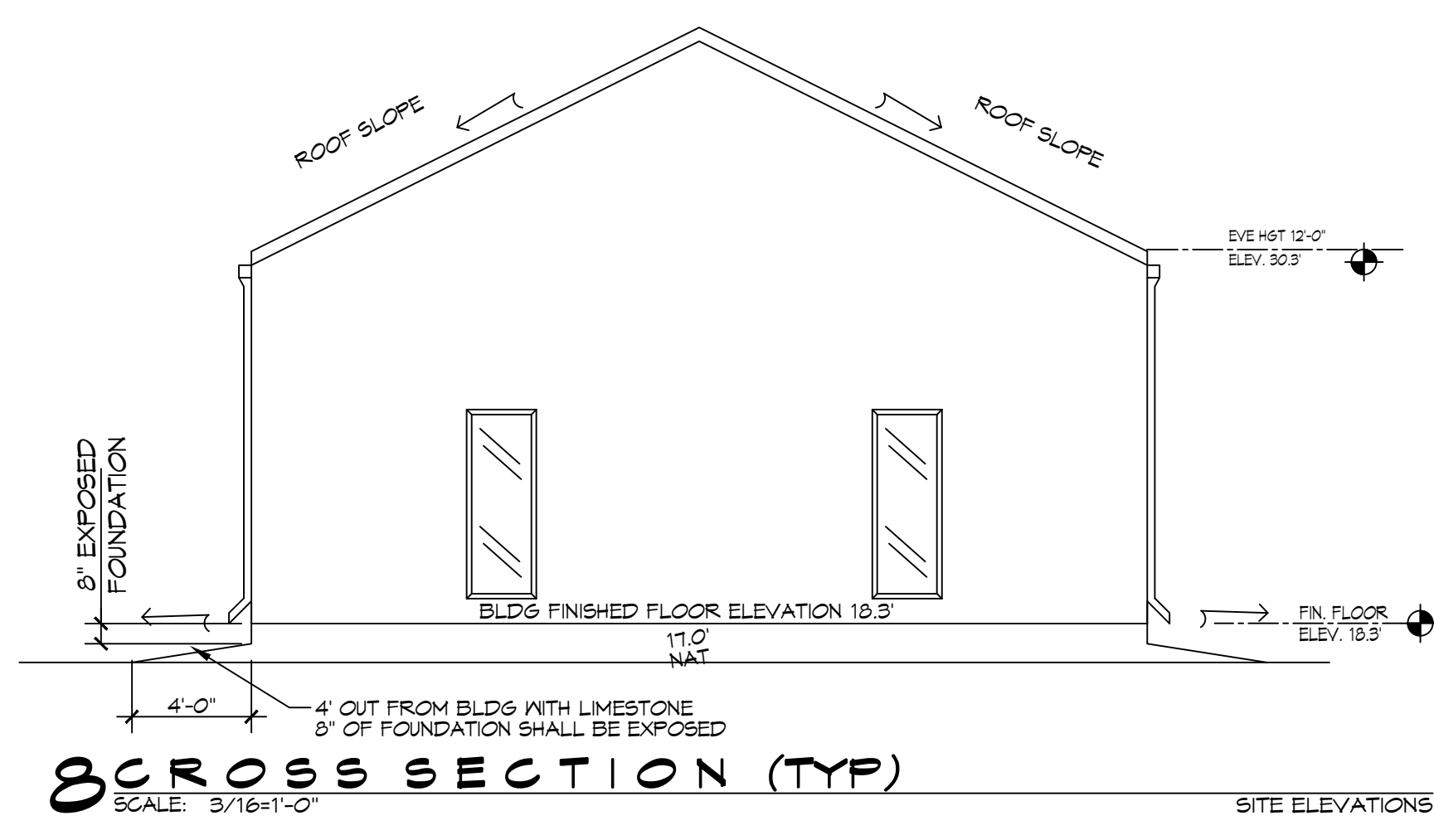
SITE UTILITIES LEGEND



NOTE:
ALL PLUMBING IS DRAWN
DIAGMATICALLY FOR
CLARITY



NOTE:
A MINIMUM SEPERATION OF
12\"/>



DAMMON ENGINEERING, INC.
LOUISIANA & MISSISSIPPI
www.dammonengineering.com
info@dammonengineering.com
Chief Engineer: Brian Mistich, PE
554 Old Spanish Trail
Slidell, LA 70468
PH: 985.649.9532

#	DESCRIPTION	DATE



NEW TRAINING FACILITY
ST. TAMMANY FIRE PROTECTION DISTRICT NO. 1
94180 S RANGE ROAD
SLIDELL, LA 70460
JOB No: 25071 DATE: 02-04-2025
DRAWN BY: BAW
C&D CHECKED BY: BAW

SHEET TITLE:
DRAINAGE & UTILITY SITE PLAN

DRAWING NUMBER:
C102
SHEET No: 4 of 15