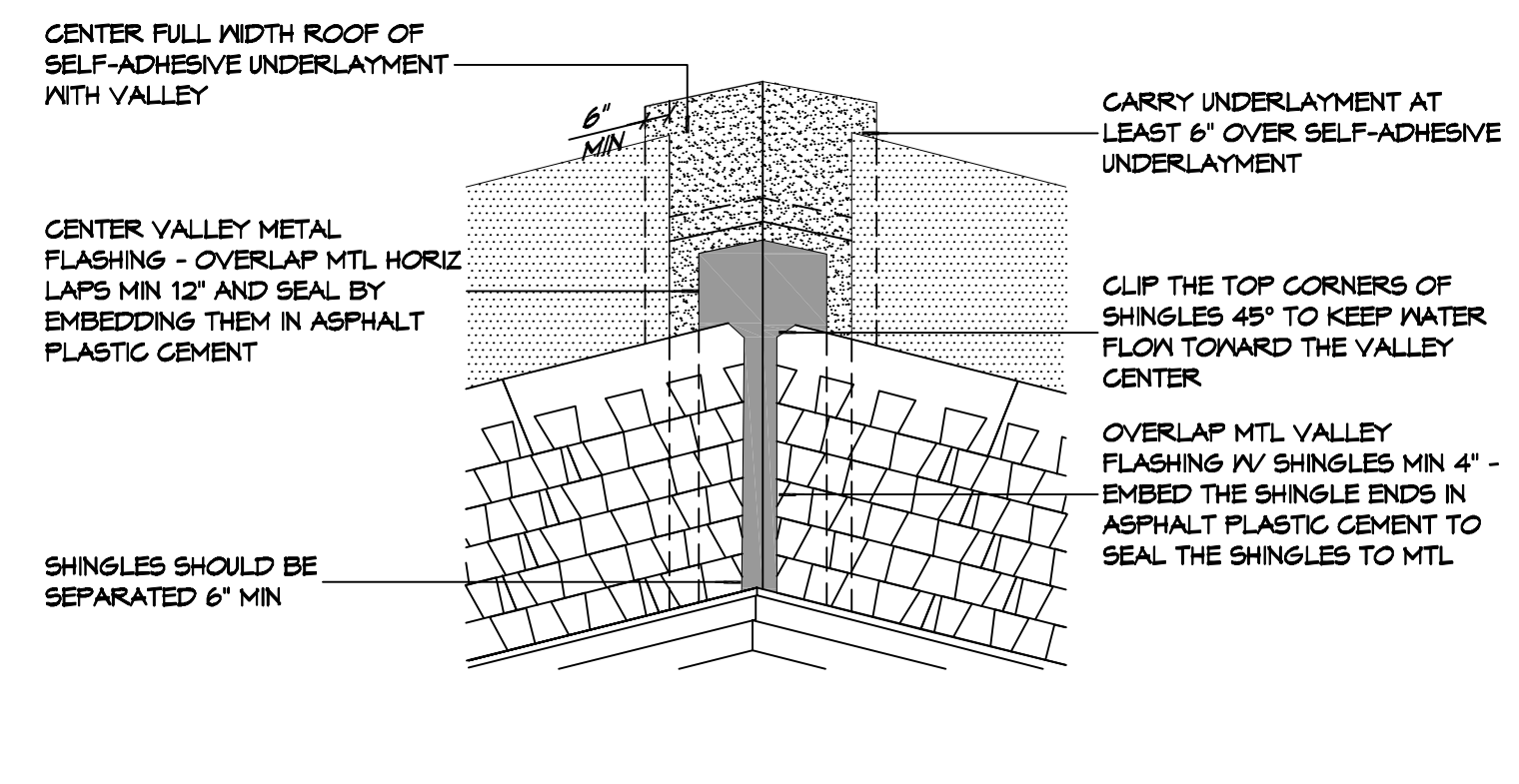
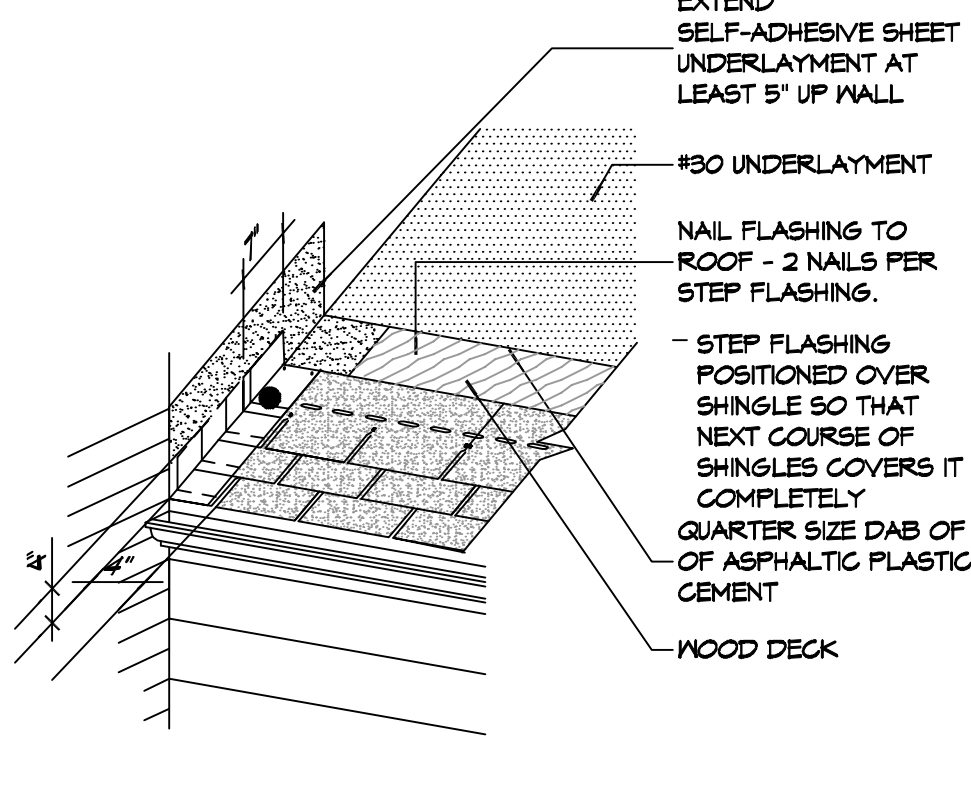
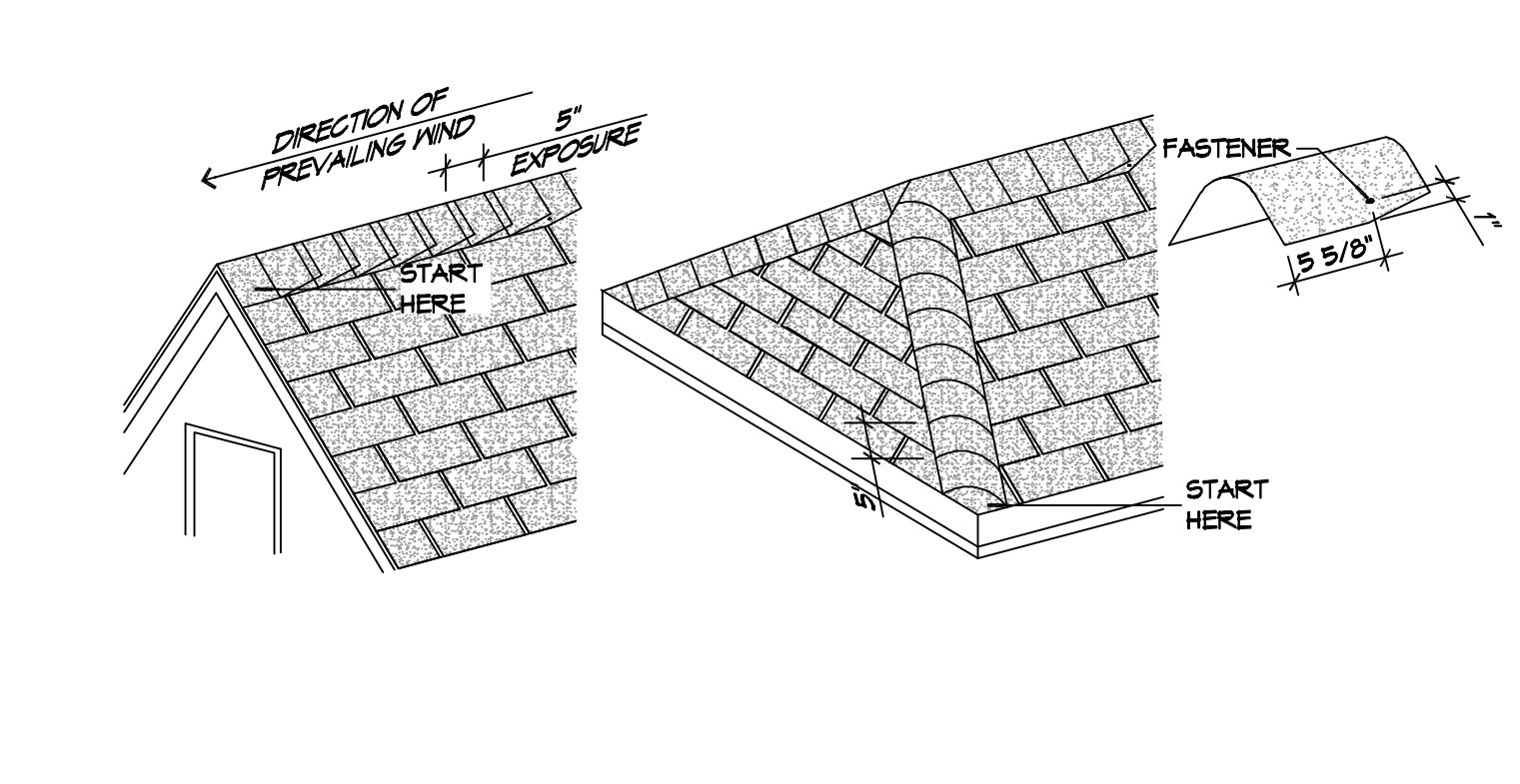
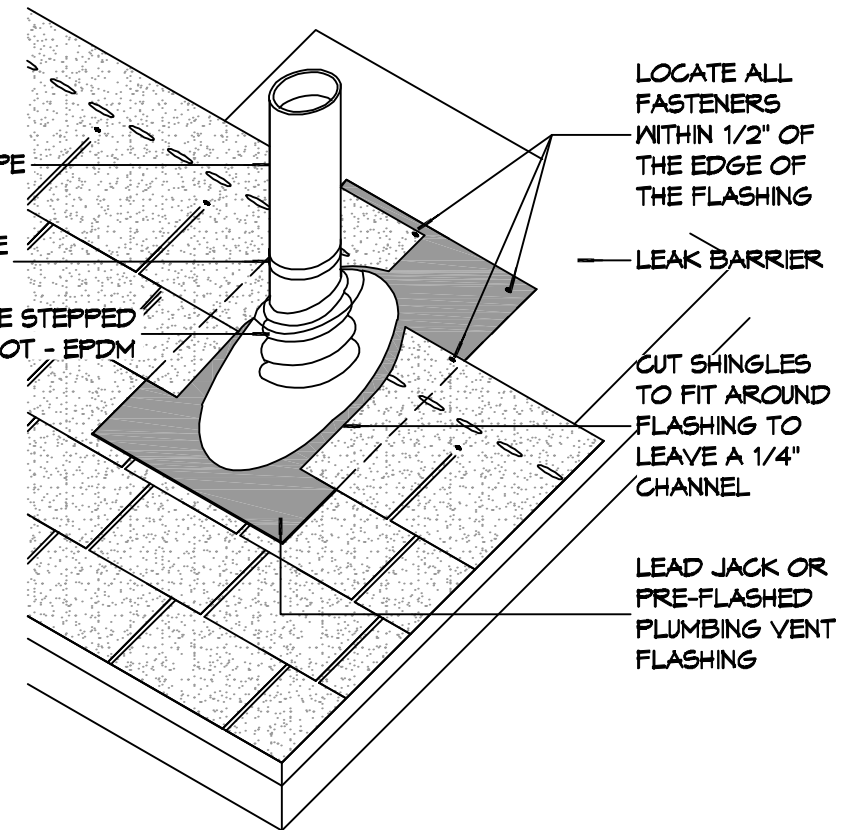


EIC NAME: A1 - Dammon Engineering, Inc. - For Review (10/10/2025) - Dammon Engineering, Inc. - For Review (10/10/2025) - Dammon Engineering, Inc. - For Review (10/10/2025) - Dammon Engineering, Inc. - For Review (10/10/2025)



**D PLUMBING VENT FLASHING**

**C RIDGE CAP SHINGLES**

**B STEP FLASHING**

**A VALLEY FLASHING**

**TYPICAL ROOF DETAILS**  
SCALE: 1" = 1'-0"

**RCP NOTES**

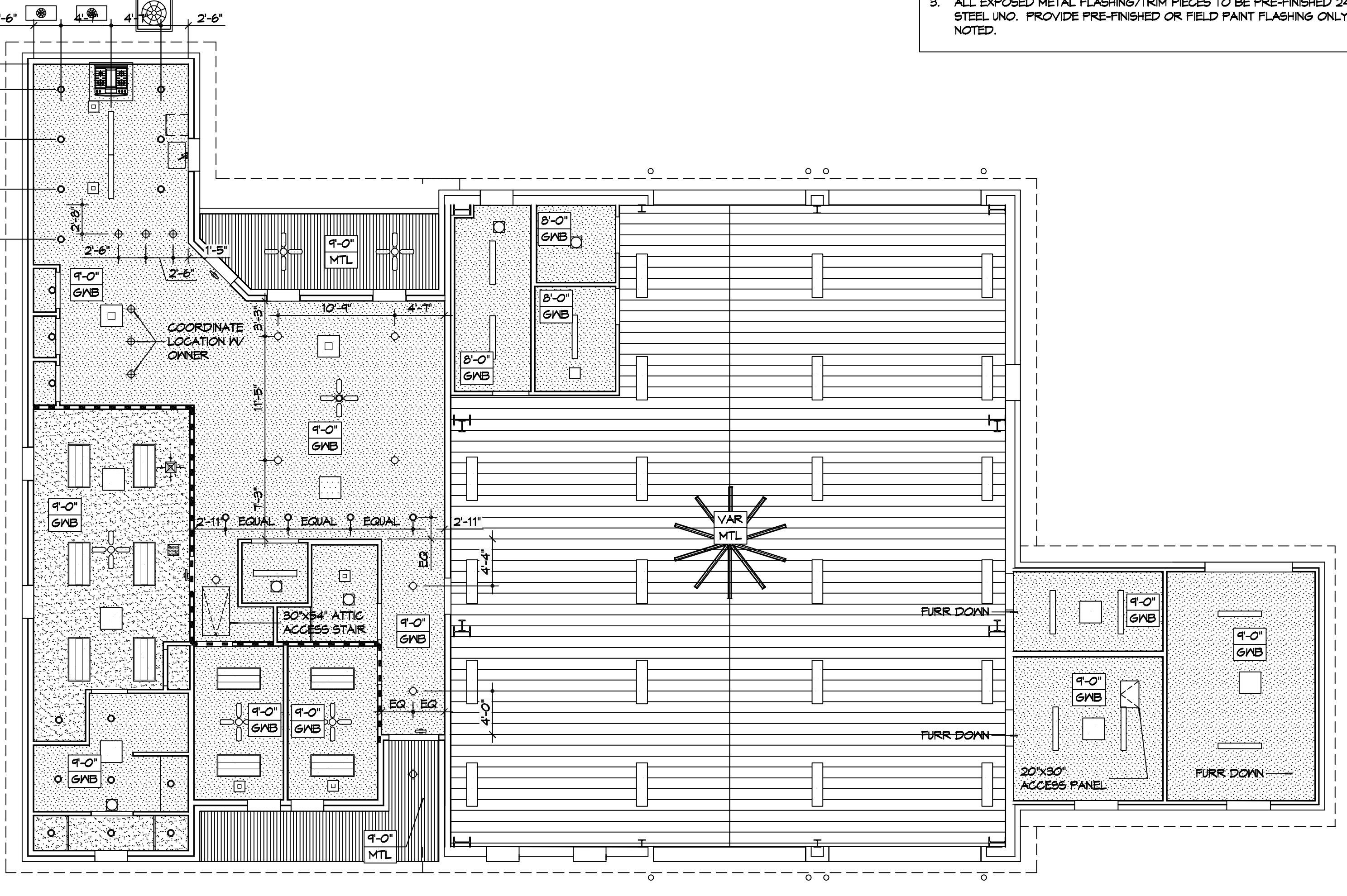
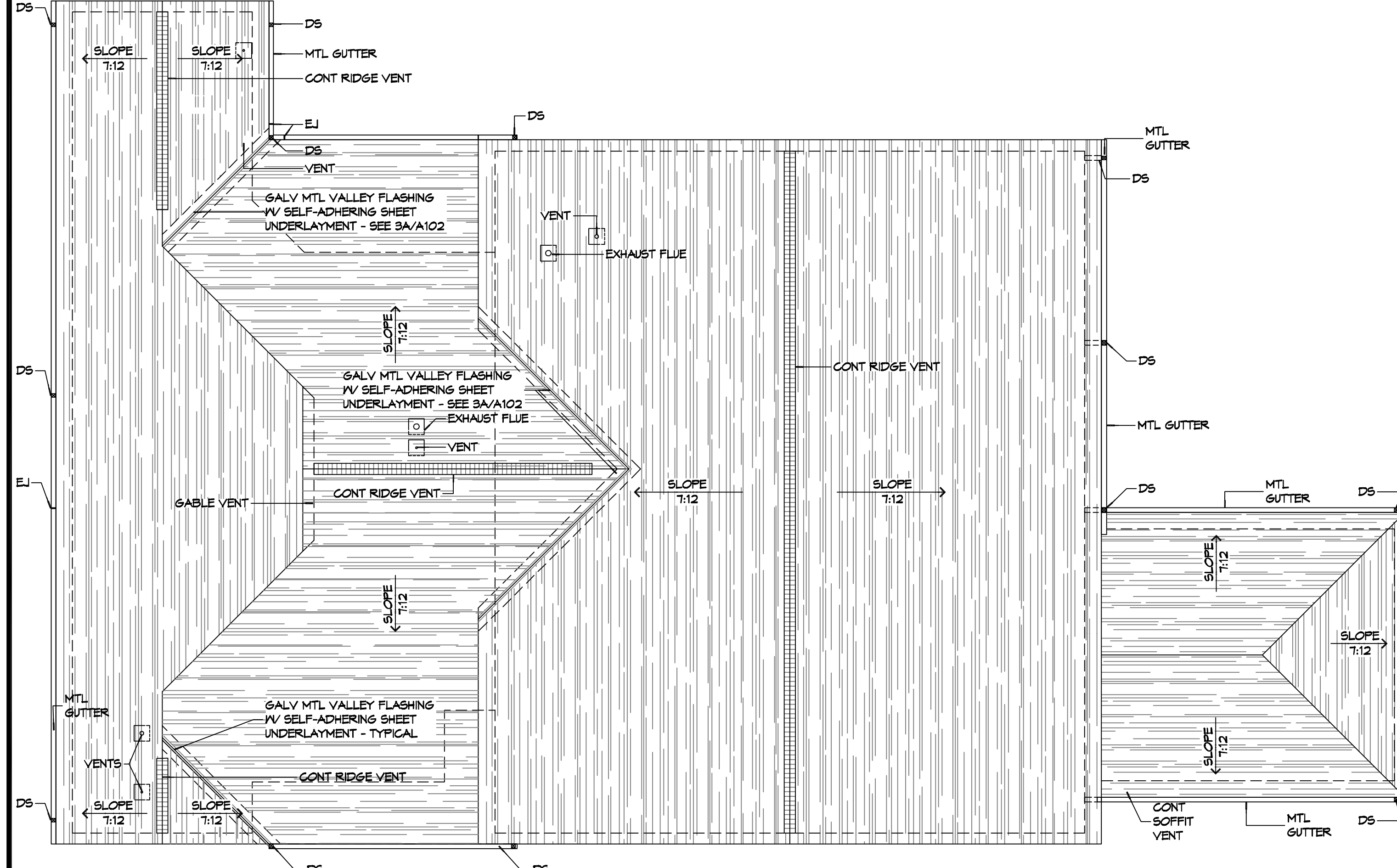
- ALL CEILING HEIGHTS INDICATED ARE APPROXIMATE. ACTUAL CEILING HEIGHT TO BE DETERMINED BY STRUCTURE ELEVATION AND CEILING ASSEMBLY THICKNESS. INDICATED HEIGHT IS MEASURED ABOVE FINISH FLOOR (AFF).
- REFER TO SHEET A501 FOR WALL/PARTITION ASSEMBLY AND INFORMATION.
- SEE SHEET E102 FOR LIGHT FIXTURE TYPES. SEE SHEETS M101 & M102 FOR DIFFUSER AND GRILLE TYPES.
- REFER TO INTERIOR ELEVATIONS FOR MOUNTING HEIGHT OF WALL MOUNTED LIGHT FIXTURES.
- SEAL AROUND ALL CEILING OPENINGS ON SLEEPING QUARTERS SIDE OF SMOKE PARTITION TO RESTRICT THE MOVEMENT SMOKE.

**RCP LEGEND**

SYMBOL	SYMBOL	DESCRIPTION
	2x4	SURFACE MOUNTED FLUORESCENT LIGHT FIXTURE
	1x4	SUSPENDED HIGH BAY LIGHT FIXTURES
		SURFACE MOUNTED FLUORESCENT LIGHT FIXTURE STRIP
		CEILING FAN
		PENDANT LIGHT FIXTURE
		RECESSED LIGHT FIXTURE
		SURFACE MOUNTED LIGHT FIXTURE
		EXHAUST FAN
		HVAC SUPPLY AIR DIFFUSER
		HVAC RETURN AIR GRILL
		GYPSUM BOARD CEILING
		METAL LINER PANEL CEILING
		METAL SOFFIT PANEL

**GENERAL ROOF NOTES**

- COORDINATE INSTALLATION OF NEW ROOF SYSTEM WITH OTHER TRADES. REPORT ANY CONFLICTS WITH ITEMS BY OTHER TRADES TO THE ARCHITECT.
- ALL PLUMBING VENTS SHALL EXTEND ABOVE THE FINISHED SURFACE OF THE ROOF SYSTEM TO PROVIDE FOR A MINIMUM OF 8" BASE FLASHING.
- ALL EXPOSED METAL FLASHING/TRIM PIECES TO BE PRE-FINISHED 24 GA STEEL UNO. PROVIDE PRE-FINISHED OR FIELD PAINT FLASHING ONLY AS NOTED.



**DAMMON ENGINEERING, INC.**  
 LOUISIANA & MISSISSIPPI  
 Chief Engineer: Brian Mitchell, PE  
 554 Old Spanish Trail  
 Slidell, LA 70468  
 www.dammonengineering.com  
 info@dammonengineering.com  
 PH: 985.649.5832

REVISIONS	DATE

NEW FIRE STATION #10  
**ST. TAMMANY FIRE PROTECTION DISTRICT No. 1**  
 246 LAKESHORE VISTA BLVD  
 SLIDELL, LA 70461  
 JOB No: 2519  
 DATE: 11-19-2025  
 DRAWN BY: KJK  
 CHECKED BY: KJK

SHEET TITLE:  
**REFLECTED CEILING PLAN AND ROOF PLAN, ROOF DETAILS**

DRAWING NUMBER:

**A102**