

Luminaire Schedule							LLF	Lum. Lumens
Symbol	Label	Qty	Arrangement	Manufacturer & Part Number				
⊙	A1 50W	25	Single	LEVITON - LR2F2X4-LED850K050LUNV			0.950	5275
⊙	A2 40W	6	Single	LEVITON - LR2F2X4-LED850K040LUNV			0.950	3841
⊙	B1 40W	1	Single	PORTOR - PT-BLP-24-40-3CP-9 (Set @ 40W 5000K)			0.950	5204
⊙	B2 30W	10	Single	PORTOR - PT-BLP-24-40-3CP-9 (Set @ 30W 5000K)			0.950	3998
⊕	C1 19W	43	Single	HELIOS - 6R15L40KWF			0.950	1463
⊕	D1 65W	1	Single	BROWNLIEE - 2680-30-549-40K-UP1			0.950	4996
⊕	F1 22W	2	Single	ELCO - ELS22CT5W (@5000K)			0.950	1347

Calculation Summary											
Label	CalcType	Units	PtSpcLr	PtSpcTb	Avg	Max	Min	Avg/Min	Max/Min	Description	
Bath 1_Workplane	Illuminance	Fc	4	4	43.30	43.3	43.3	1.00	1.00	Readings taken at 2'-6" aff	
Bath 2_Workplane	Illuminance	Fc	4	4	33.40	33.8	33.0	1.01	1.02	Readings taken at 2'-6" aff	
Bath 3_Workplane	Illuminance	Fc	4	4	40.40	51.5	34.9	1.16	1.48	Readings taken at 2'-6" aff	
Bath 4_Workplane	Illuminance	Fc	4	4	33.40	34.5	32.4	1.03	1.06	Readings taken at 2'-6" aff	
Bio Haz_Workplane	Illuminance	Fc	4	4	17.40	17.4	17.4	1.00	1.00	Readings taken at 2'-6" aff	
C Arm Exam_Workplane	Illuminance	Fc	4	4	47.57	60.8	27.7	1.72	2.19	Readings taken at 2'-6" aff	
Closet_Workplane	Illuminance	Fc	4	4	14.25	14.3	14.2	1.00	1.01	Readings taken at 2'-6" aff	
Conference_Workplane	Illuminance	Fc	4	4	51.13	61.1	45.8	1.12	1.33	Readings taken at 2'-6" aff	
Exam 1_Workplane	Illuminance	Fc	4	4	56.73	62.2	53.4	1.06	1.16	Readings taken at 2'-6" aff	
Exam 2_Workplane	Illuminance	Fc	4	4	56.73	62.2	53.4	1.06	1.16	Readings taken at 2'-6" aff	
Exam 3_Workplane	Illuminance	Fc	4	4	56.73	62.2	53.4	1.06	1.16	Readings taken at 2'-6" aff	
Exam 4_Workplane	Illuminance	Fc	4	4	56.73	62.2	53.4	1.06	1.16	Readings taken at 2'-6" aff	
Exam 5_Workplane	Illuminance	Fc	4	4	56.72	60.9	54.6	1.04	1.12	Readings taken at 2'-6" aff	
Exam 6_Workplane	Illuminance	Fc	4	4	56.53	61.2	53.9	1.05	1.14	Readings taken at 2'-6" aff	
Hallway_Workplane	Illuminance	Fc	4	4	36.24	59.9	18.5	1.96	3.24	Readings taken at 2'-6" aff	
IT_Workplane	Illuminance	Fc	4	4	48.12	51.6	46.2	1.04	1.12	Readings taken at 2'-6" aff	
Jan_Workplane	Illuminance	Fc	4	4	48.80	48.8	48.8	1.00	1.00	Readings taken at 2'-6" aff	
Laundry_Workplane	Illuminance	Fc	4	4	39.04	49.1	19.0	2.05	2.58	Readings taken at 2'-6" aff	
Lounge_Workplane	Illuminance	Fc	4	4	40.20	43.9	37.2	1.08	1.18	Readings taken at 2'-6" aff	
Nurse Station_Workplane	Illuminance	Fc	4	4	50.11	65.8	42.6	1.18	1.54	Readings taken at 2'-6" aff	
Office 1 Closet_Workplane	Illuminance	Fc	4	4	37.80	37.8	37.8	1.00	1.00	Readings taken at 2'-6" aff	
Office 1_Workplane	Illuminance	Fc	4	4	41.03	56.0	33.4	1.23	1.68	Readings taken at 2'-6" aff	
Office 2_Workplane	Illuminance	Fc	4	4	48.42	52.1	46.4	1.04	1.12	Readings taken at 2'-6" aff	
Reception_Workplane	Illuminance	Fc	4	4	54.70	58.9	49.9	1.10	1.18	Readings taken at 2'-6" aff	
Storage 1_Workplane	Illuminance	Fc	4	4	48.20	51.7	46.3	1.04	1.12	Readings taken at 2'-6" aff	
Storage 2_Workplane	Illuminance	Fc	4	4	49.10	49.1	49.1	1.00	1.00	Readings taken at 2'-6" aff	
Waiting Room_Workplane	Illuminance	Fc	4	4	42.81	59.7	28.7	1.49	2.08	Readings taken at 2'-6" aff	
Work Room_Workplane	Illuminance	Fc	4	4	52.57	68.3	20.9	2.52	3.27	Readings taken at 2'-6" aff	
X Ray Tech_Workplane	Illuminance	Fc	4	4	28.40	30.0	26.8	1.06	1.12	Readings taken at 2'-6" aff	
X Ray_Workplane	Illuminance	Fc	4	4	40.61	52.3	18.1	2.24	2.89	Readings taken at 2'-6" aff	

NOTES:

- 1) Fixture Mounting Heights (MH) are indicated next to each fixture.
- 2) All fixtures labeled with "_alt" indicates an alternative fixture different from what was listed in the fixture schedule received was used in this calculation
- 3) Interior reflectances 80/50/20; exterior reflectances 20% UON.
- 4) Quantity (QTY) indicated on HPLS Luminaire Schedule is for what is included in this calculation study only - Not final counts.
- 5) Contractor to verify exact fixture quantities and fixture run lengths before ordering.

Project Name: Kevin Darr, MD Office - Rev 1

Client:

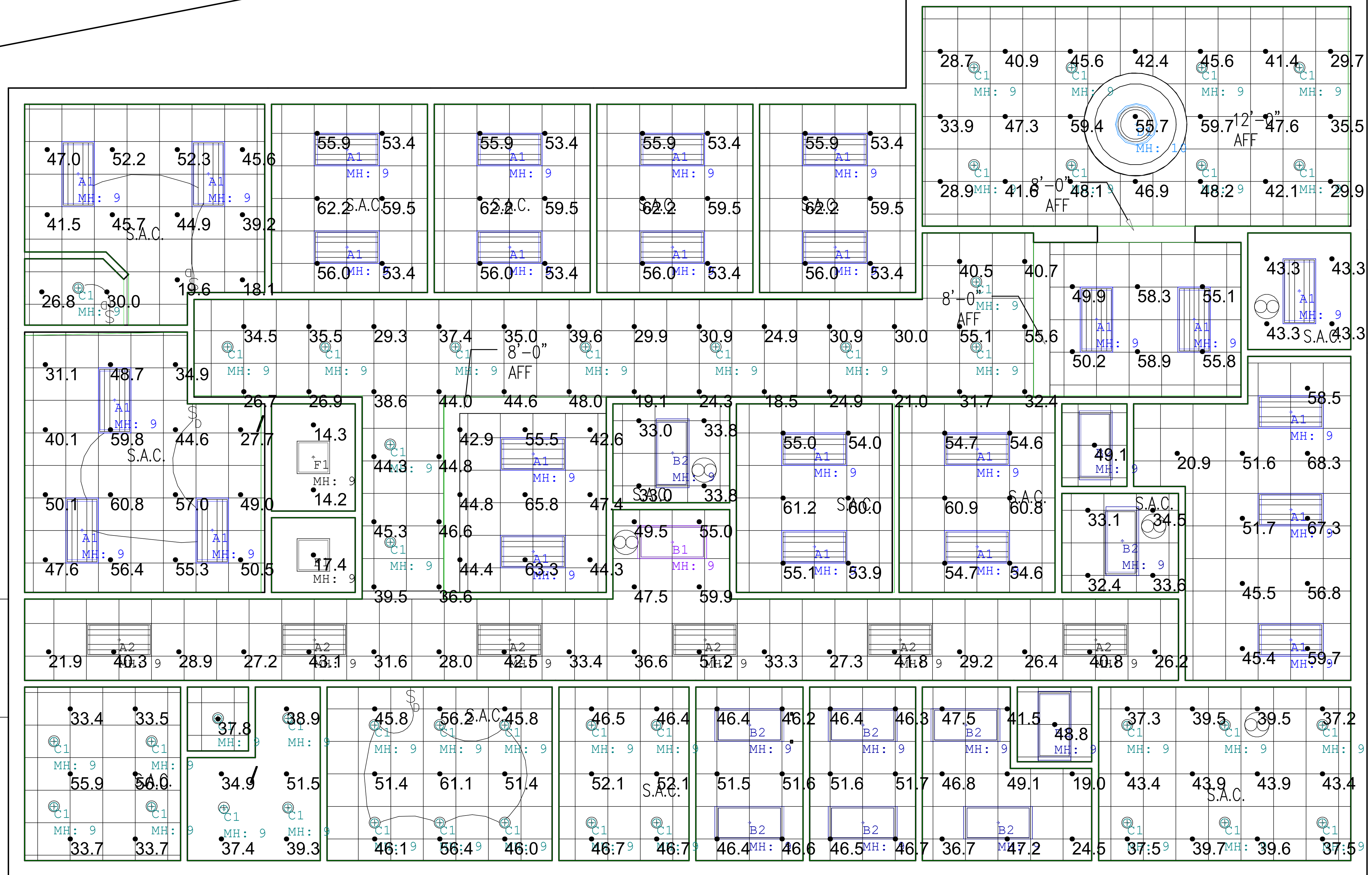
Date: 3/17/2026

Drawn By: C Thornton

Version:



THE ENGINEER AND/OR ARCHITECT MUST DETERMINE APPLICABILITY OF THE LAYOUT TO EXISTING / FUTURE FIELD CONDITIONS. THIS LIGHTING LAYOUT REPRESENTS ILLUMINATION LEVELS CALCULATED FROM LABORATORY DATA TAKEN UNDER CONTROLLED CONDITIONS IN ACCORDANCE WITH ILLUMINATING ENGINEERING SOCIETY APPROVED METHODS. ACTUAL PERFORMANCE OF ANY MANUFACTURER'S LUMINAIRE MAY VARY DUE TO VARIATION IN ELECTRICAL VOLTAGE, TOLERANCE IN LAMPS, AND OTHER VARIABLE FIELD CONDITIONS. THESE LIGHTING CALCULATIONS ARE NOT A SUBSTITUTE FOR INDEPENDENT ENGINEERING ANALYSIS OF LIGHTING SYSTEM SUITABILITY AND SAFETY. THE ENGINEER AND/OR ARCHITECT IS RESPONSIBLE TO REVIEW FOR COMPLIANCE OF ALL APPLICABLE ENERGY CODES AND LIGHTING QUALITY STANDARDS.



Project Name: Kevin Darr, MD Office - Rev 1

Client:

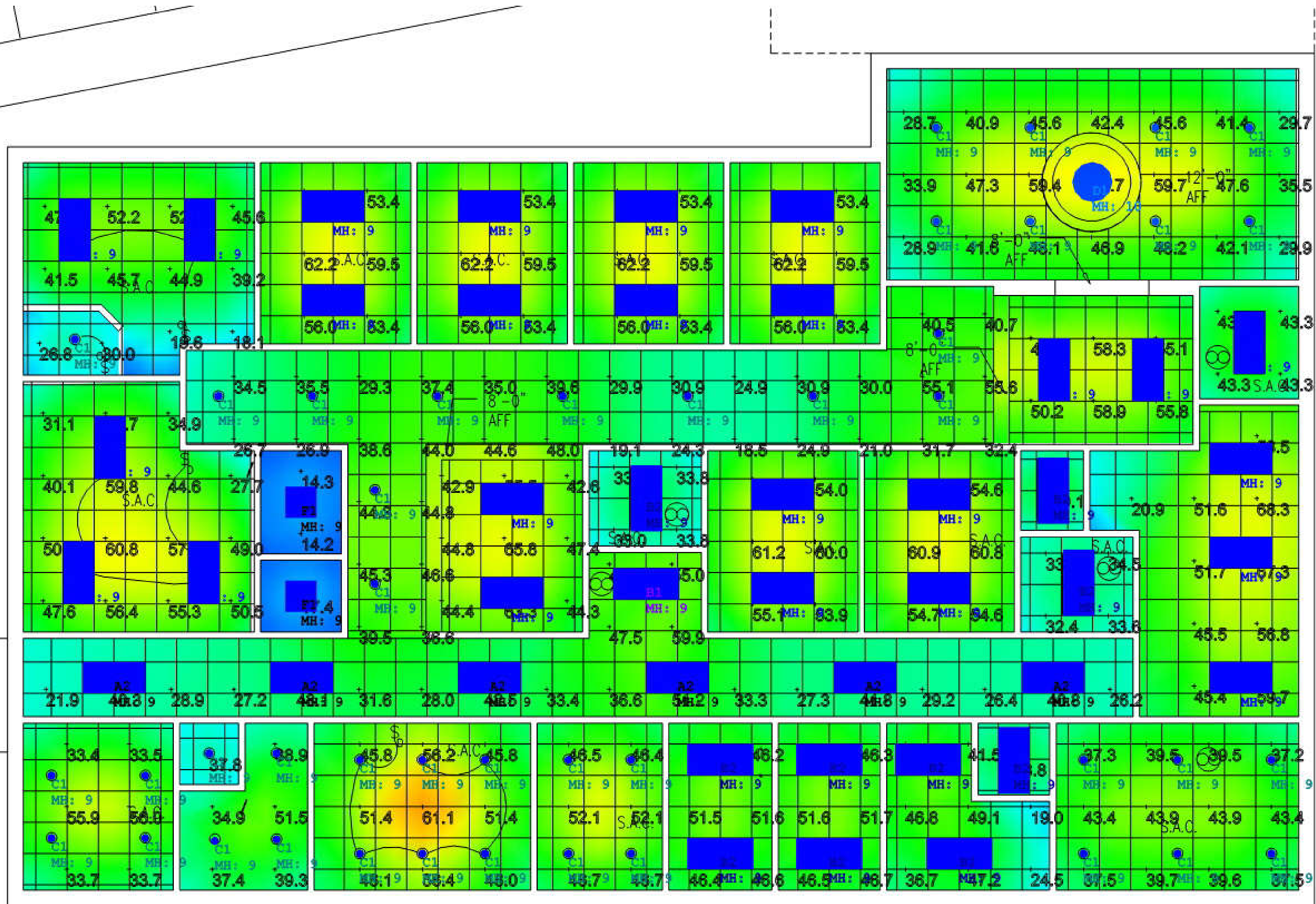
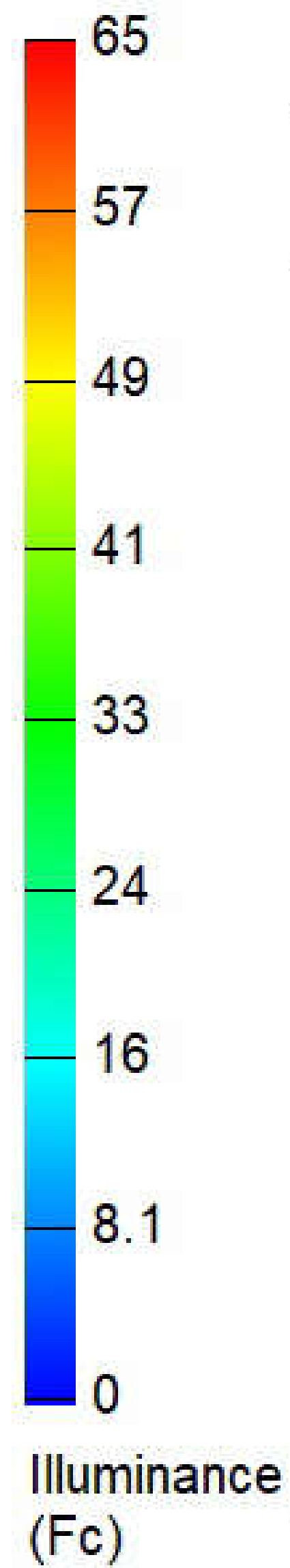
Date: 3/17/2026

Drawn By: C Thornton

Version:



THE ENGINEER AND/OR ARCHITECT MUST DETERMINE APPLICABILITY OF THE LAYOUT TO EXISTING / FUTURE FIELD CONDITIONS. THIS LIGHTING LAYOUT REPRESENTS ILLUMINATION LEVELS CALCULATED FROM LABORATORY DATA TAKEN UNDER CONTROLLED CONDITIONS IN ACCORDANCE WITH ILLUMINATING ENGINEERING SOCIETY APPROVED METHODS. ACTUAL PERFORMANCE OF ANY MANUFACTURER'S LUMINAIRE MAY VARY DUE TO VARIATION IN ELECTRICAL VOLTAGE, TOLERANCE IN LAMPS, AND OTHER VARIABLE FIELD CONDITIONS. THESE LIGHTING CALCULATIONS ARE NOT A SUBSTITUTE FOR INDEPENDENT ENGINEERING ANALYSIS OF LIGHTING SYSTEM SUITABILITY AND SAFETY. THE ENGINEER AND/OR ARCHITECT IS RESPONSIBLE TO REVIEW FOR COMPLIANCE OF ALL APPLICABLE ENERGY CODES AND LIGHTING QUALITY STANDARDS.



Project Name: Kevin Darr, MD Office - Rev 1

Client:

Date: 3/17/2026

Drawn By: C Thornton

Version:



THE ENGINEER AND/OR ARCHITECT MUST DETERMINE APPLICABILITY OF THE LAYOUT TO EXISTING / FUTURE FIELD CONDITIONS. THIS LIGHTING LAYOUT REPRESENTS ILLUMINATION LEVELS CALCULATED FROM LABORATORY DATA TAKEN UNDER CONTROLLED CONDITIONS IN ACCORDANCE WITH ILLUMINATING ENGINEERING SOCIETY APPROVED METHODS. ACTUAL PERFORMANCE OF ANY MANUFACTURER'S LUMINAIRE MAY VARY DUE TO VARIATION IN ELECTRICAL VOLTAGE, TOLERANCE IN LAMPS, AND OTHER VARIABLE FIELD CONDITIONS. THESE LIGHTING CALCULATIONS ARE NOT A SUBSTITUTE FOR INDEPENDENT ENGINEERING ANALYSIS OF LIGHTING SYSTEM SUITABILITY AND SAFETY. THE ENGINEER AND/OR ARCHITECT IS RESPONSIBLE TO REVIEW FOR COMPLIANCE OF ALL APPLICABLE ENERGY CODES AND LIGHTING QUALITY STANDARDS.