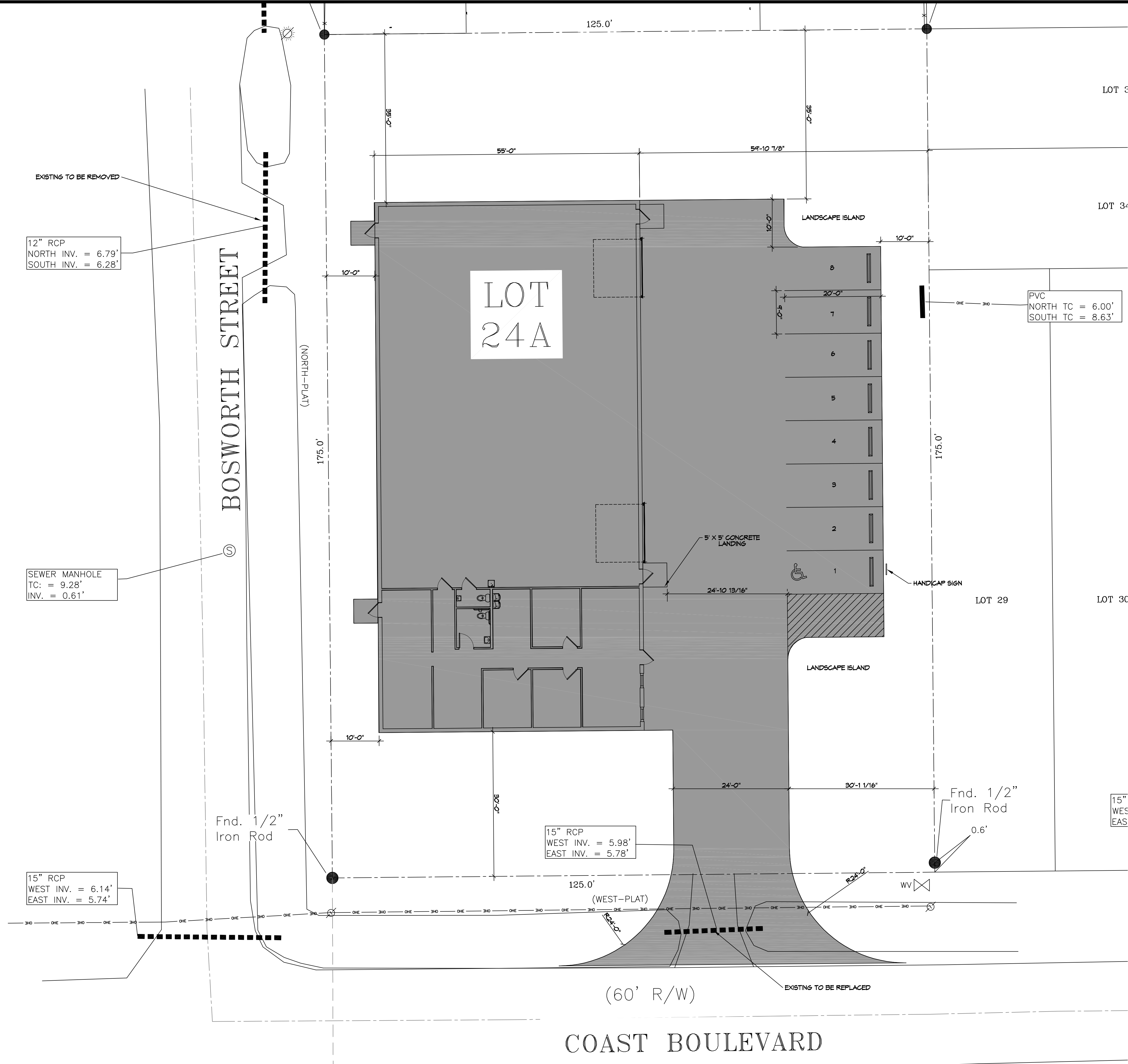


FILE NAME: J:\Projects\2024\240101\240101.dwg DATE: 1/22/2024 10:52:43 AM



PLANNING
ZONED I-1 LIGHT INDUSTRIAL
FLOOD ZONE
FLOOD ZONE 'A5' BASE FLOOD ELEVATION 9.0'
BUILDING ELEVATION
BUILDING ELEVATION 9.0' + 2.0' = 11.0'
BUILDING
NEW WAREHOUSE SQUARE FOOTAGE 6,050 OFFICE AREA SQUARE FOOTAGE 1,351 WAREHOUSE AREA SQUARE FOOTAGE 4,713
PARKING REQUIREMENTS
STORAGE, TESTING, REPAIRING, WAREHOUSING OR SIMILAR ESTABLISHMENTS OTHER LIGHT INDUSTRIAL USES CANNERIES, PAPER, PETROLEUM, RUBBER OR WOOD PRODUCT MANUFACTURING; STEEL MILLS REQUIRE 1 SPACE PER EACH 1250 SQFT OF STORAGE AREA PLUS 1 SPACE PER EACH 350 SQFT OF OFFICE, SALES OR OTHER SPACE TO BE USED BY VISITORS, CUSTOMERS OR SALESMEN
PARKING SPACES PROVIDED = 8 HANDICAP PARKING SPACE = 1 TOTAL PARKING SPACES PROVIDED = 8
DESIGN CRITERIA
THE CONSTRUCTION FOR SAID BUILDING, WHERE WIND SPEED IS 140 MILES PER HOUR AND WIND WAVE SPEED IS 130 MPH, WIND EXPOSURE ZONE C, IS DESIGNED IN ACCORDANCE WITH: AMERICAN FOREST AND PAPER ASSOCIATION (AF&PA) WOOD FRAME CONSTRUCTION MANUAL FOR ONE AND TWO FAMILY DWELLINGS (WFCM) 2001 EDITION AS WELL AS THE INTERNATIONAL RESIDENTIAL CODE (IRC) 2021 EDITION. STRUCTURE SHALL BE BUILT TO THE 2021 INTERNATIONAL ENERGY CONSERVATION CODE (IECC) AND STATE AMENDMENTS ADOPTED JULY 1, 2023.

DAMMON ENGINEERING, INC.
LOUISIANA & MISSISSIPPI
www.dammonengineering.com
554 Old Spanish Trail
Slidell, LA 70468
Chief Engineer: Brian Mistich, PE
Info@dammonengineering.com
PH: 985.449.9832

#	DESCRIPTION	DATE

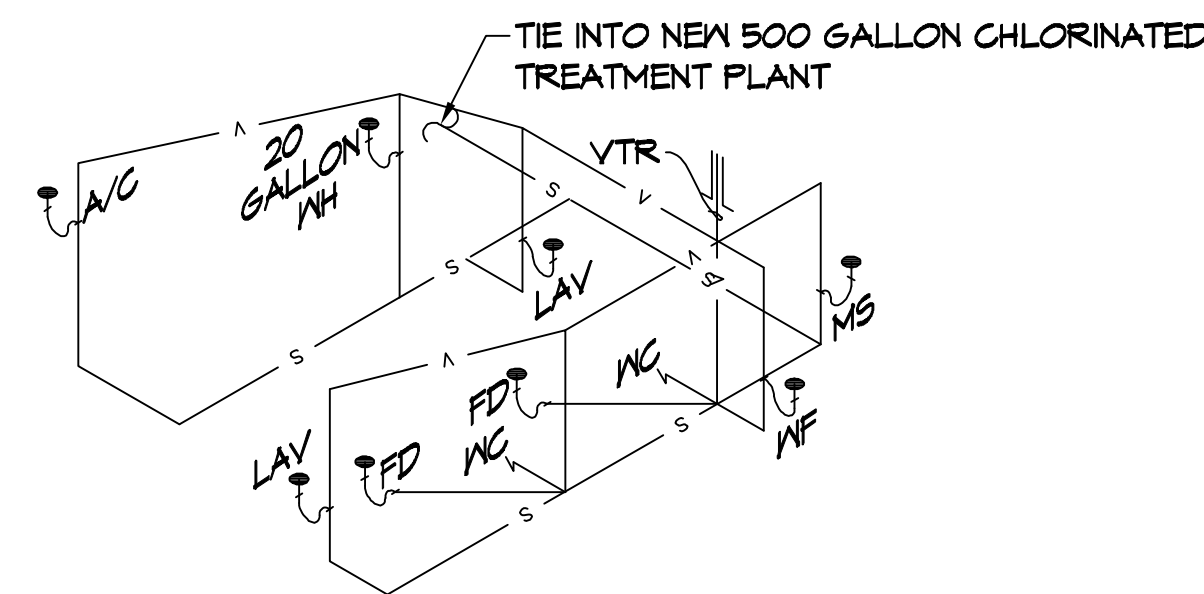
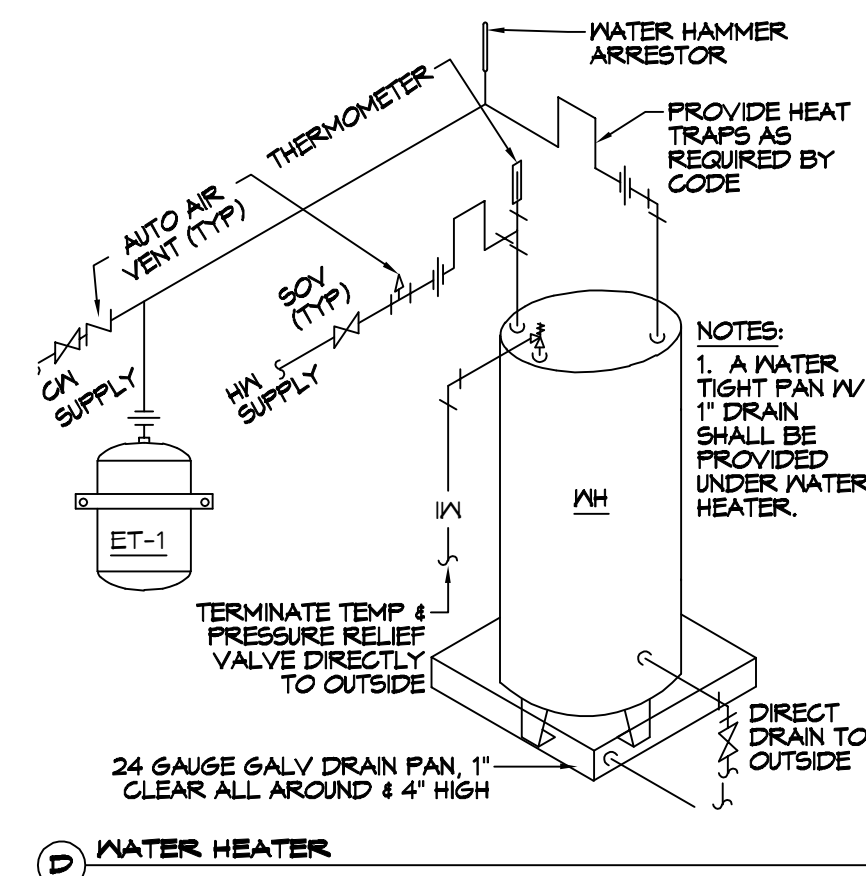
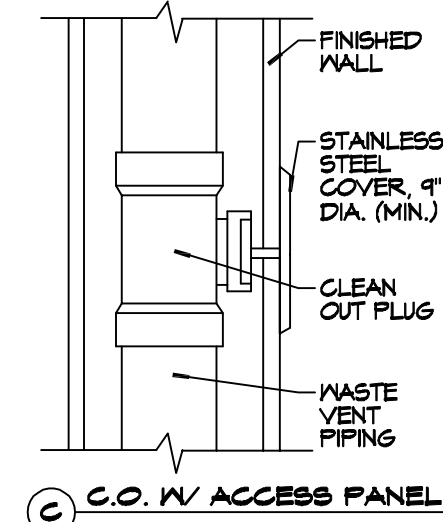
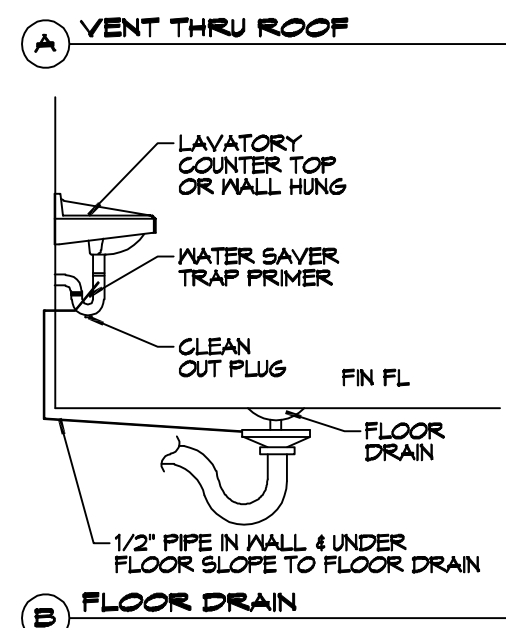
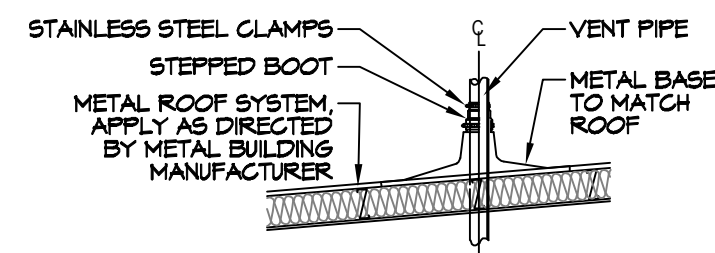
SEAL:

NEW OFFICE WAREHOUSE
LEWIS A/C
39104 COAST BOULEVARD
SLIDELL, LA 70460
JOB No: 1-22-2026
DATE: 1-22-2026
DRAWN BY: JMS
CHECKED BY: GCD

SHEET TITLE:
PROPOSED SITE PLAN

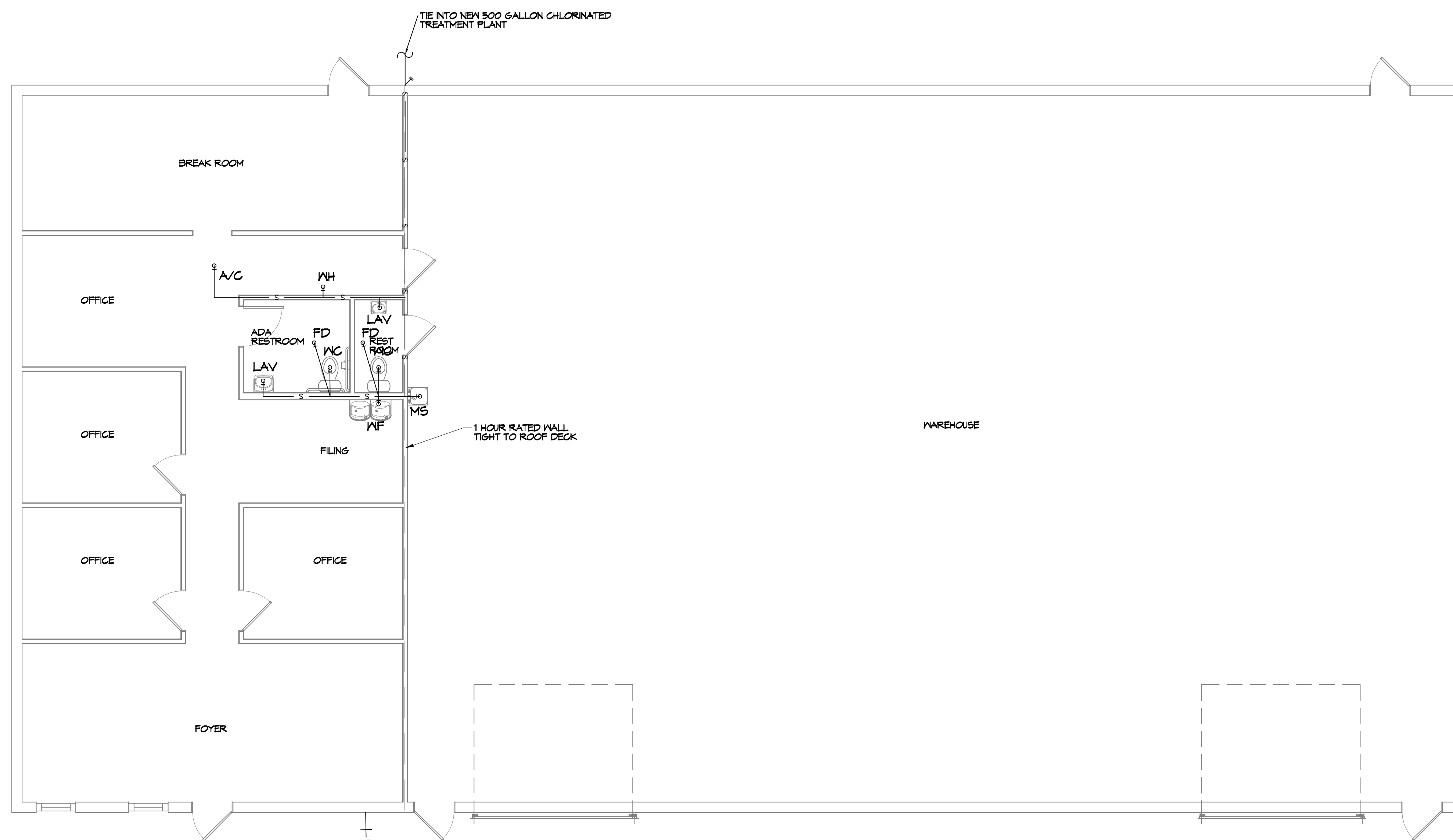
DRAWING NUMBER:
C101

SHEET No: 3 of 12



PLUMBING DETAILS
SCALE: NTS

12 PLUMBING RISER
SCALE: 3/16" = 1'-0"



11 PLUMBING PLAN
SCALE: 3/16" = 1'-0"

GENERAL PLUMBING NOTES

1. PLUMBING LINES SHOWN ARE DRAWN DIAGRAMMATIC IN NATURE AND REPRESENT CONCEPTUAL ROUTING ONLY. CONTRACTOR IS RESPONSIBLE FOR FIELD VERIFICATION OF ALL ACTUAL CONDITIONS.
2. PROVIDE ALL LABOR, MATERIAL, TRANSPORTATION, SUPERVISION, CLEAN-UP, SERVICES, AND EQUIPMENT FOR A COMPLETE OPERATING SYSTEM. THE SYSTEM SHALL INCLUDE HOT AND COLD WATER PIPING, SEWER AND VENT PIPING, INSULATION, WATER HEATER, HANGERS, VALVES, SUPPORTS WITHOUT ANY RESTRICTIONS TO VOLUME. CUT AND PATCH AS REQUIRED TO INSTALL PIPES.
3. ALL WORK AND MATERIAL SHALL CONFORM STRICTLY TO THE LATEST LOCAL CITY, PARISH, STATE AND NATIONAL GOVERNING CODES.
4. CONTRACTOR IS TO FIELD VERIFY ALL EXISTING UTILITY LOCATIONS, ELEVATIONS AND SIZES PRIOR TO COMMENCING ANY WORK. CONTRACTOR SHALL PAY NECESSARY FEES FOR THE UTILITIES CONNECTIONS.
5. CONTRACTOR IS RESPONSIBLE TO VERIFY THE EXISTING INVERTS AND SET NEW INVERTS OF SEWERAGE AND DRAINAGE PIPES.
6. SEWERAGE LINES 3-INCH AND SMALLER SHALL BE SLOPED 1/4" PER FOOT AND LINES 4-INCH AND LARGER SHALL BE 1/8" PER FOOT.
7. TEST ALL PIPING AT REQUIRED PRESSURE.
8. ALL PLUMBING SHALL BE CLOSELY COORDINATED WITH STRUCTURAL, MECHANICAL SYSTEM AND ELECTRICAL SYSTEMS TO INSURE NO TRADES WILL CONFLICT WITH EACH OTHER.
9. DO NOT SCALE DRAWINGS. SEE ARCHITECTURAL DRAWINGS FOR EXACT LOCATIONS OF DOORS, WINDOWS, WALLS, FIXTURES, ETC.
10. ALL WATER MAINS AND PIPING NOT SHOWN FOR CLARITY, ALL LOCATIONS FIELD VERIFIED.
11. DOMESTIC HOT AND COLD WATER PIPING AND FITTINGS UNDER SLAB SHALL BE ASTM B88 COPPER WATER TUBE, TYPE K, SOFT ANNEALED. NO JOINTS SHALL BE ALLOWED UNDER THE SLAB.
12. DOMESTIC WATER PIPING AND FITTINGS ABOVE THE SLAB SHALL BE ASTM B88 COPPER WATER TUBE, TYPE L, HARD DRAWN WITH COPPER PRESSURE TYPE FITTINGS, ANSI B16.22. THE JOINTS SHALL BE SOLDERED TYPE USING ASTM B32, ALLOY GRADE 95A (95-5) SOLDER.
13. SOIL, WASTE, VENT PIPING AND FITTINGS ABOVE THE SLAB SHALL BE SERVICE WEIGHT CAST IRON PIPE WITH BELL AND SPIGOT ENDS AND ONE PIECE NEOPRENE INSERT TYPE GASKET. USE PVC SCHEDULE 40 OR ABS DWV PIPES AND FITTINGS WHERE PERMITTED BY CODE.
14. ALL WATER PIPING AND FITTINGS ABOVE THE FLOOR SHALL BE INSULATED WITH 1/2" THICK FIBERGLASS INSULATION AND JACKET.
15. ALL ELECTRICAL, MECHANICAL AND PLUMBING ELEMENTS PENETRATING FIRE PARTITIONS SHALL BE FIRE CAULKED. (PENETRATIONS THROUGH RATED CONSTRUCTION SHALL BE SEALED WITH A MATERIAL CAPABLE OF PREVENTING THE PASSAGE OF FLAMES AND HOT GASES WHEN TESTED IN ACCORDANCE WITH ASTM-E814.)
16. SEE ROOF PLAN FOR PLUMBING ROOF PENETRATIONS. ROUTE VENT PIPES IN ATTIC AS NECESSARY.
17. ALL VENTS THROUGH ROOF (VTR) SHALL BE LOCATED A MINIMUM OF 10'-0" FROM ANY MECHANICAL OR NATURAL AIR INTAKE.

LEGEND

- CO - CLEAN OUT
- VTR - VENT THRU ROOF
- VENTILATION
- SEWAGE

ALL PLUMBING LINES ARE DRAWN DIAGRAMMATICALLY FOR CLARITY.

DAMMON ENGINEERING, INC.
LOUISIANA & MISSISSIPPI
www.dammonengineering.com
info@dammonengineering.com
PH: 985.649.8832
Chief Engineer: Brian Mistich, PE
554 Old Spanish Trail
Stidell, LA 70458

REVISIONS	DATE
#	DESCRIPTION



NEW OFFICE WAREHOUSE
LENIS A/C
3904 COAST BOULEVARD
SLIDELL, LA 70460
JOB No: LJP
DATE: 1-22-2026
CHECKED BY: BAM
DRAWN BY: BAM

SHEET TITLE:
PLUMBING PLAN

DRAWING NUMBER:

P101

DX SPLIT SYSTEM SCHEDULE

AIR HANDLER											CONDENSER					REMARKS		
TAG	MAKE	MODEL	NOMINAL TONS	TOTAL CFM	Motor HP	ESP (" WC)	HEAT (Kw)	POWER			TAG	NOMINAL TONS	MAKE	MODEL	POWER			
								VAC	PH	MCA					VAC		PH	MCA
AHU-1	Trane	5TEM4D04AC31S	3	1200	1/2	0.4	10.8	208	1	42	CU-1	3	Trane	5TTR5036A1000	208	1	18	1, 2

- NOTES:**
- Provide single point power connection, time delay relay, condensate overflow switch & programmable 7/24 thermostat.
 - Cooling capacities to be rated in accordance with AHRI standard 210/290 for ASHRAE standard design weather conditions in New Orleans, LA.

DIFFUSER SCHEDULE

TAG	SERVICE	NECK SIZE	DESCRIPTION
A	Supply Air	Ref. Plan	12"x 12" Adjustable Square Cone Diffuser, Price ASCDA w/ Insulated Back Panel
B	Return Air	Ref. Plan	20" x 20" Perforated Ceiling Return Grille, Price PDR

- Notes:**
- Seal around perimeter of diffusers/grilles to prevent moisture migration from attic space
 - Coordinate with owner / architect for color and finish
 - R value of insulated back panels to exceed R-6

Exhaust Fan Schedule

Tag	Fan		Power				Make / Model	Remarks
	Airflow (CFM)	TSP (" wc)	Amps	Volts	Phase	Hz		
EF-1	80	0.2	0.4	120	1	60	Broan A80	1, 2, 3
EF-2	50	0.2	0.2	120	1	60	Broan AE50	1, 2, 3

- Interlock with light switch
- Furnish with backdraft damper.
- Install per Manufacturer's recommendations.

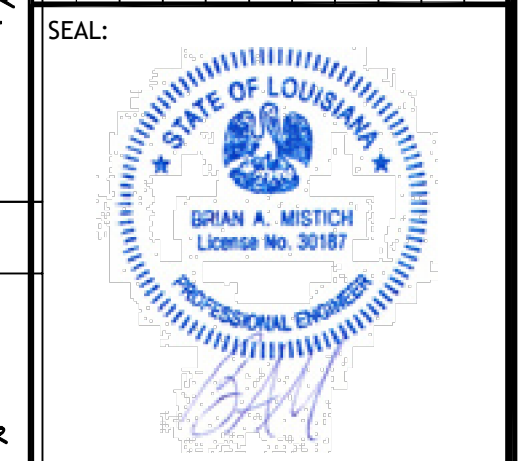
GENERAL HYAC NOTES

- CONCEALED DUCTWORK TO BE GALVANIZED SHEET METAL WRAPPED WITH FIBROUS GLASS DUCT WRAP WITH FSK VAPOR BARRIER, MIN R-6. INSTALLED PER SMAGNA STANDARDS. DUCT WORK IMMEDIATELY DOWNSTREAM FROM RTU SHALL BE LINED FOR SOUND ATTENUATION.
- EXPOSED DUCTWORK TO BE GALVANIZED SHEET METAL LINED WITH FIBROUS GLASS DUCT LINER, MIN R-6. INSTALLED PER SMAGNA STANDARDS.
- ROUND FLEXIBLE DUCT TO BE UL-181, CLASS 1, AIR DUCT MATERIALS.
- DUCT SIZES SHOWN ARE CLEAR INSIDE DIMENSIONS.
- IN ALL SYSTEMS OVER 2000 CFM AND LESS THAN 15,000 CFM, SMOKE DETECTORS SHALL BE INSTALLED IN ACCORDANCE WITH NFPA 12E IN THE RETURN DUCT DOWNSTREAM OF THE AIR HANDLING UNIT AND ALL FILTERS TO AUTOMATICALLY STOP THE FAN.
- PROVIDE UL LISTED 125°F FIRESTAT IN RETURN AIR OF EACH SYSTEM UNDER 2000 CFM TO SHUT DOWN THE FAN IN THE EVENT OF FIRE.
- PROVIDE UL RATED FIRE DAMPERS WHERE REQUIRED AT ALL DUCT PENETRATIONS OF FIRE-RATED ASSEMBLIES AND WHERE REQUIRED BY CODE, INCLUDING OUTSIDE AIR INTAKES AND EXHAUST FANS.
- CONDENSATE DRAINS TO BE PVC PIPE RUN TO PLUMBERS P-TRAP WITHIN FIVE FEET OF AIR HANDLING UNITS.
- ALL AIR HANDLING SYSTEMS TO BE BALANCED TO ASSURE PROPER AIR FLOWS PER PLANS.
- ALL THERMOSTATS TO BE AUTOMATIC CHANGEOVER WITH HEAT SWITCH.
- EXHAUST FAN SHALL BE CONTROLLED BY A SWITCH ON THE WALL IN THE SAME LOCATION AS LIGHT SWITCH(S). PROVIDE BACK DRAFT DAMPER.
- PROVIDE AND INSTALL WATER PROOF GRILLE VENT IN PROPER ROOF LOCATION FOR PLUMBING FIXTURE EXHAUST.
- ALL SUPPLY AIR VENTS SHALL BE EQUIPPED WITH AIR CONTROL DAMPERS AT THE REGISTER.
- LOCATE OUTDOOR UNITS AS SHOWN ON ARCHITECTURAL DRAWINGS.
- REFRIGERANT LINES SHALL BE SIZED BY UNIT MANUFACTURER AND INSTALLED ACCORDING TO MANUFACTURER'S INSTRUCTIONS.
- FRESH AIR SHALL BE SUPPLIED TO EACH AIR HANDLER THROUGH EXTERIOR WALL DUCT SUPPLIED WITH A CONTROL DAMPER.
- ALL ELECTRICAL, MECHANICAL, AND PLUMBING PENETRATING FIRE WALLS SHALL BE FIRE CAULKED. PENETRATIONS THROUGH RATED CONSTRUCTION SHALL BE SEALED WITH A MATERIAL CAPABLE OF PREVENTING THE PASSAGE OF FLAMES AND HOT GASES WHEN TESTED IN ACCORDANCE WITH ASTM-E8-14).
- ALL MECHANICAL SYMBOLS ARE DRAWN DIAGRAMMATICALLY. CONTRACTOR TO VERIFY WITH OWNER LOCATIONS OF VENTS, DAMPERS, REGISTERS, ETC.
- FLEXIBLE DUCTWORK LENGTH NOT TO EXCEED 12'-0". SUPPORT FLEX DUCT TO PREVENT SAGGING
- REFER TO REFLECTED CEILING PLAN FOR FINAL GRILLE AND DIFFUSER LOCATIONS AND COORDINATE AS REQUIRED.
- FINAL LOCATION OF TEMPERATURE CONTROLS TO BE COORDINATED WITH OWNER AT JOB SITE.
- PROVIDE AND INSTALL SMOKE DETECTORS AS APPROVED BY LOCAL A.H.J.S. PLACE NEAR R/A AND S/A OPENINGS OF AHU AND PROVIDE, WITH ACCESS PANEL, WIRING BY ELECTRICAL CONTRACTOR.
- FRESH AIR INTAKES ARE REQUIRED TO HAVE MOTORIZED OR GRAVITY DAMPERS TO SHUT OFF WHEN SYSTEM IS NOT RUNNING.
- PROVIDE BIRD SCREENS AT ALL EXTERIOR MECHANICAL PENETRATIONS.
- COORDINATE WALL MOUNTED THERMOSTAT LOCATIONS WITH ALL OWNER FURNISHED ITEMS EITHER WALL MOUNTED OR FLOOR MOUNTED AGAINST PARTITIONS. REFER TO ARCHITECTURAL DRAWINGS.
- PROVIDE MIN 1/8 GA GALVANIZED SHEET METAL TO BLANK-OFF GABLE VENTS WHERE INTAKE/EXHAUST DUCTS OCCUR.

DAMMON ENGINEERING, INC.
LOUISIANA & MISSISSIPPI

Chief Engineer: Brian Mistich, PE
554 Old Spanish Trail
Slidell, LA 70468
www.dammonengineering.com
info@dammonengineering.com
PH: 985.649.5832

REVISIONS	DATE	DESCRIPTION

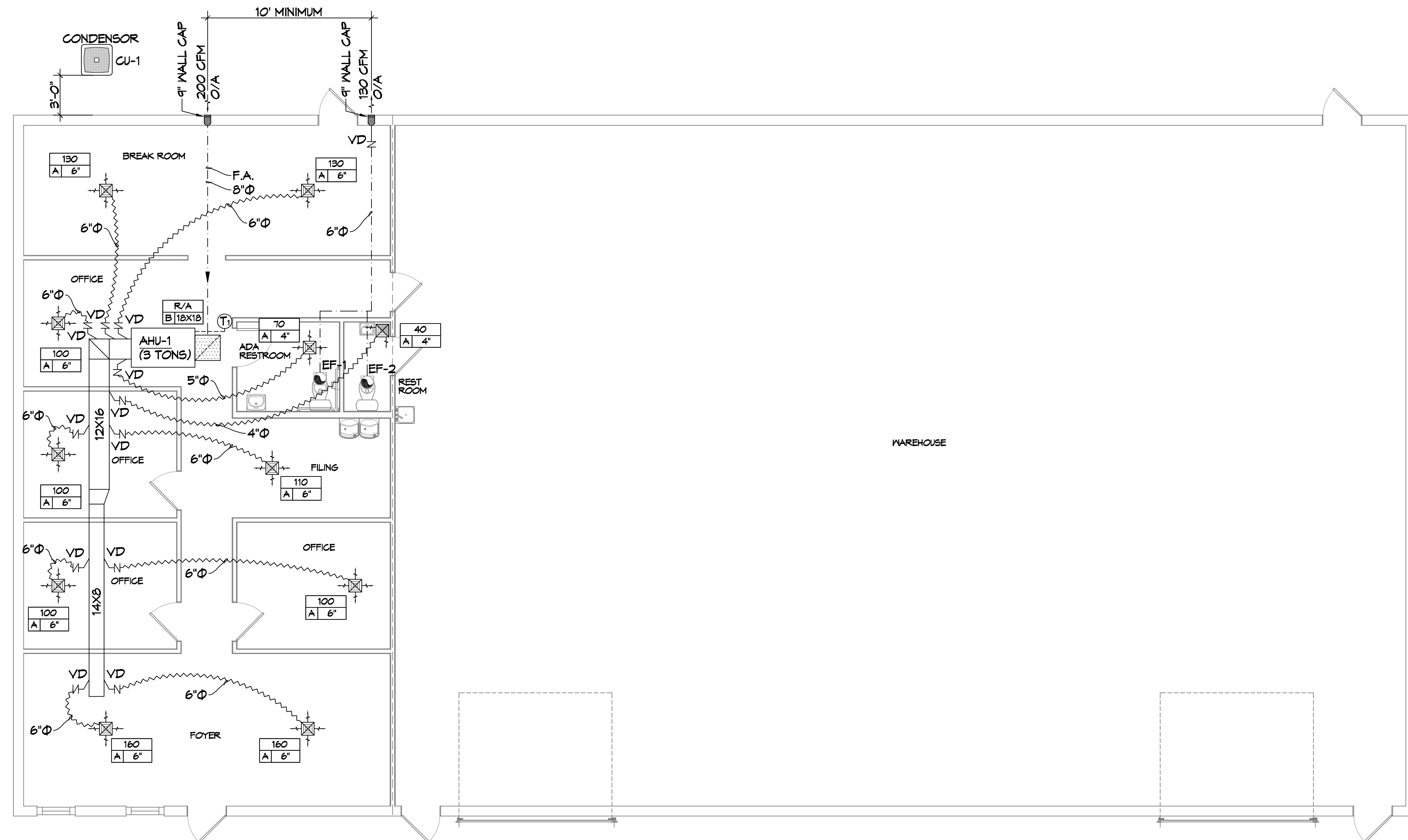


NEW OFFICE WAREHOUSE
LEWIS A/C
39104 COAST BOULEVARD
SLIDELL, LA 70460
JOB No: 1-22-2026
DATE: 1-22-2026
DRAWN BY: GCP
CHECKED BY: GCP

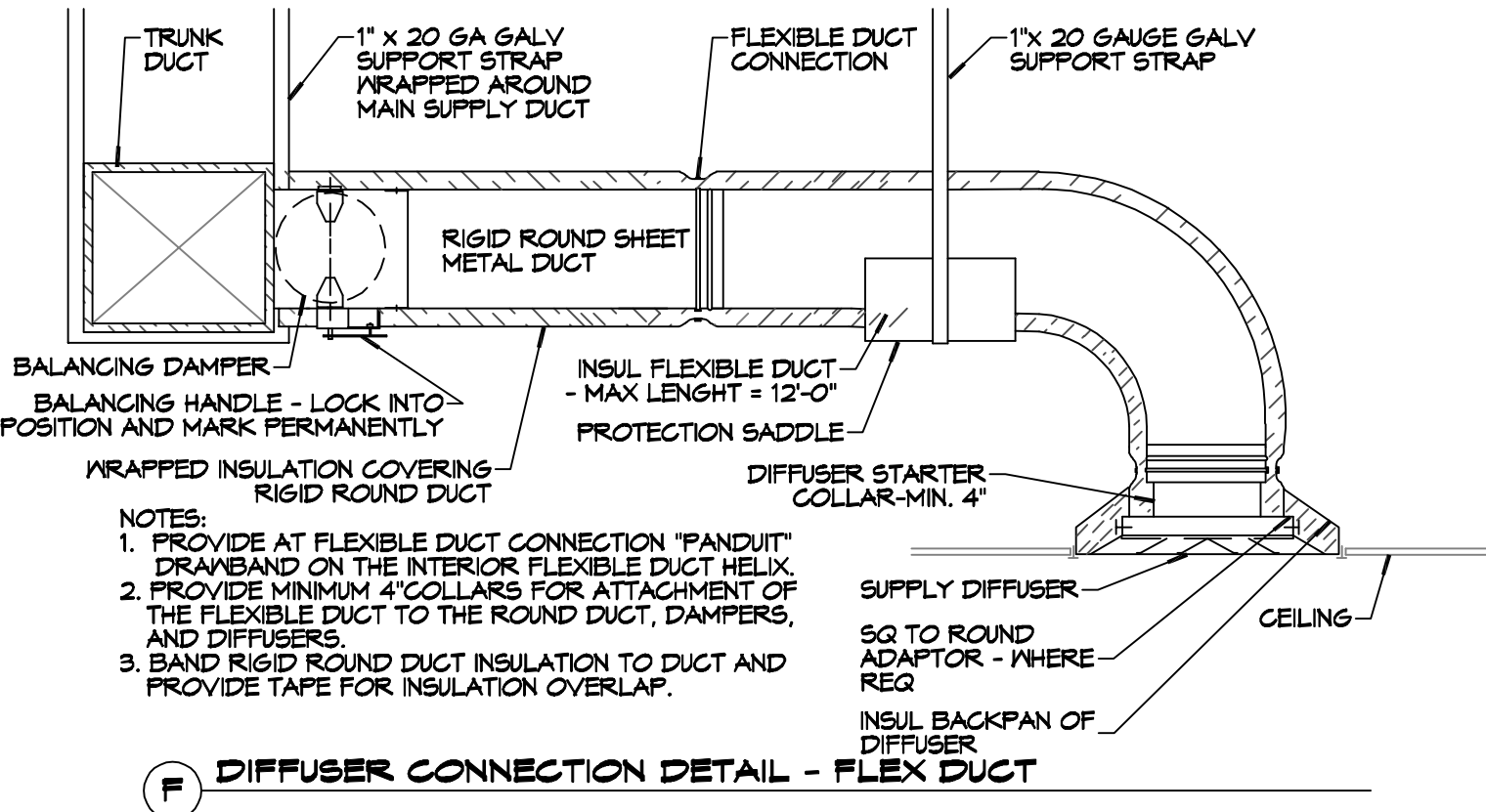
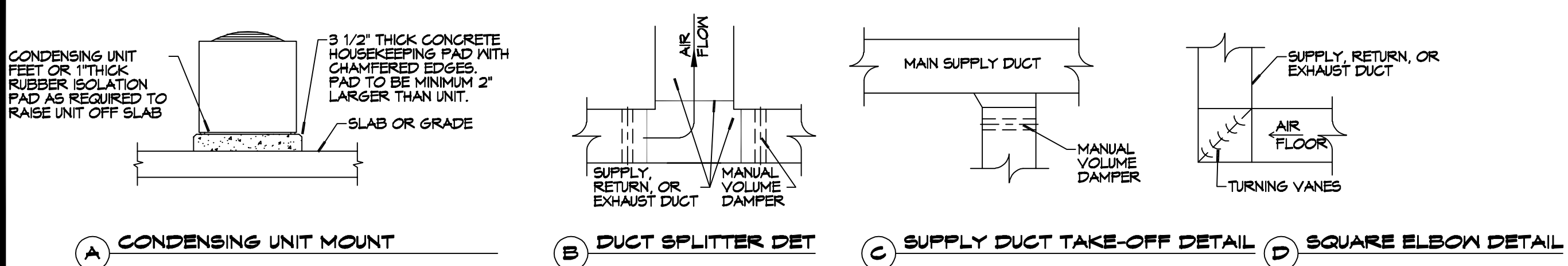
SHEET TITLE:
MECHANICAL PLAN

DRAWING NUMBER:
M101

SHEET No: 9 of 12



WAREHOUSE ADDITION
SCALE: 3/16"=1'-0"



- NOTES:**
- PROVIDE AT FLEXIBLE DUCT CONNECTION "PANOUT" DRAWBAND ON THE INTERIOR FLEXIBLE DUCT HELIX.
 - PROVIDE MINIMUM 4" COLLARS FOR ATTACHMENT OF THE FLEXIBLE DUCT TO THE ROUND DUCT, DAMPERS, AND DIFFUSERS.
 - BAND RIGID ROUND DUCT INSULATION TO DUCT AND PROVIDE TAPE FOR INSULATION OVERLAP.

FILE NAME: J:\1. Office\Workshop\LENS A/C Shop\Panel\Schedule.dwg DATE: 01/11/2024 10:52:00 AM

PANEL SCHEDULE													
PANEL:		PP		INTERRUPTING RATING: 10 KAC		VOLTAGE: 240/120V, 200A, 1Ø, 3Ø W/MAN CIRCUIT BREAKER							
LOCATION:		EQUIPMENT ROOM		ENCLOSURE:		FLUSH MOUNTED IV EQUIPMENT GND BAR SQUARE-D							
FEEDER SOURCE:		UTILITY				TYPE G0B OR EQUAL							
CKT NO	THHN WIRE SIZE	LOAD DESCRIPTION	BREAKER		LOAD (VA)	AD	CD	LOAD (VA)	BREAKER		LOAD DESCRIPTION	THHN WIRE SIZE	CKT NO
			AMP	POLE					POLE	AMP			
1	#12	TREATMENT PLANT	20	1	1500			1100	1	20	LIGHTS, BREAK ROOM, OFFICES, RESTROOMS	#12	2
3	#12	RECEPT. OFFICES	20	1	1440			1100	1	20	LIGHTS, FOYER, OFFICE HALL	#12	4
5	#12	RECEPT. OFFICES	20	1	1260			400	1	20	LIGHTS, WAREHOUSE CENTER RM	#12	6
7	#12	RECEPT. RESTROOMS AND WATER FOUNTAIN	20	1	540			400	1	20	LIGHTS, WAREHOUSE OUTSIDE ROYS	#12	8
4	#12	RECEPT. OFFICE AND FILE ROOM	20	1	400			0	1	20	SPARE		10
11	#12	RECEPT. FOYER	20	1	1080			0	1	20	SPARE		12
13	#12	RECEPT. WAREHOUSE	20	1	400			0	1	20	SPARE		14
15	#12	RECEPT. WAREHOUSE	20	1	720			0	1	20	SPARE		16
17	#12	OVERHEAD DOOR OPERATOR	20	1	750			0	1	20	SPARE		18
19	#12	OVERHEAD DOOR OPERATOR	20	1	750			0	1	20	SPARE		20
21	#12	RECEPT. BREAK AREA	20	1	540			0	1	20	SPARE		22
23	#12	RECEPT. BREAK AREA OUTSIDE	20	1	540			0	1	20	SPARE		24
25		SPACE									SPACE		26
27		SPACE									SPACE		28
29		SPACE									SPACE		30
31		SPACE									SPACE		32
33	#10	CONDENSER UNIT	30	2	1800						SPACE		34
35		SPACE									SPACE		36
37	#8	AHU/FURNACE	50	2	5400						SPACE		38
39		SPACE									SPACE		40
41	#10	WATER HEATER	30	2	2500				2	20	SURGE SUPPRESSOR	#12	42
43		SPACE									SPACE		44
45		SPACE									SPACE		46
47		SPACE									SPACE		48
49		SPACE									SPACE		50
51		SPACE									SPACE		52
53		SPACE									SPACE		54
55		SPACE									SPACE		56
57		SPACE									SPACE		58
59		SPACE									SPACE		60
61		SPACE									SPACE		62
63		SPACE									SPACE		64
65		SPACE									SPACE		66
67		SPACE									SPACE		68
69		SPACE									SPACE		70
71		SPACE									SPACE		72
73		SPACE									SPACE		74
75		SPACE									SPACE		76
77		SPACE									SPACE		78
79		SPACE									SPACE		80
81		SPACE									SPACE		82
83		SPACE									SPACE		84
85		SPACE									SPACE		86
87		SPACE									SPACE		88
89		SPACE									SPACE		90
91		SPACE									SPACE		92
93		SPACE									SPACE		94
95		SPACE									SPACE		96
97		SPACE									SPACE		98
99		SPACE									SPACE		100
101		SPACE									SPACE		102
103		SPACE									SPACE		104
105		SPACE									SPACE		106
107		SPACE									SPACE		108
109		SPACE									SPACE		110
111		SPACE									SPACE		112
113		SPACE									SPACE		114
115		SPACE									SPACE		116
117		SPACE									SPACE		118
119		SPACE									SPACE		120
121		SPACE									SPACE		122
123		SPACE									SPACE		124
125		SPACE									SPACE		126
127		SPACE									SPACE		128
129		SPACE									SPACE		130
131		SPACE									SPACE		132
133		SPACE									SPACE		134
135		SPACE									SPACE		136
137		SPACE									SPACE		138
139		SPACE									SPACE		140
141		SPACE									SPACE		142
143		SPACE									SPACE		144
145		SPACE									SPACE		146
147		SPACE									SPACE		148
149		SPACE									SPACE		150
151		SPACE									SPACE		152
153		SPACE									SPACE		154
155		SPACE									SPACE		156
157		SPACE									SPACE		158
159		SPACE									SPACE		160
161		SPACE									SPACE		162
163		SPACE									SPACE		164
165		SPACE									SPACE		166
167		SPACE									SPACE		168
169		SPACE									SPACE		170
171		SPACE									SPACE		172
173		SPACE									SPACE		174
175		SPACE									SPACE		176
177		SPACE									SPACE		178
179		SPACE									SPACE		180
181		SPACE									SPACE		182
183		SPACE									SPACE		184
185		SPACE									SPACE		186
187		SPACE									SPACE		188
189		SPACE									SPACE		190
191		SPACE									SPACE		192
193		SPACE									SPACE		194
195		SPACE									SPACE		196
197		SPACE									SPACE		198
199		SPACE									SPACE		200
201		SPACE									SPACE		202
203		SPACE									SPACE		204
205		SPACE									SPACE		206
207		SPACE									SPACE		208
209		SPACE									SPACE		210
211		SPACE									SPACE		212
213		SPACE									SPACE		214
215		SPACE									SPACE		216
217		SPACE									SPACE		218
219		SPACE									SPACE		220
221		SPACE									SPACE		222
223		SPACE									SPACE		224
225		SPACE									SPACE		226
227		SPACE									SPACE		228
229		SPACE									SPACE		230
231		SPACE									SPACE		232
233		SPACE									SPACE		234
235		SPACE									SPACE		236
237		SPACE									SPACE		238
239		SPACE									SPACE		240
241		SPACE									SPACE		242
243		SPACE									SPACE		244
245		SPACE									SPACE		246
247		SPACE									SPACE		248
249		SPACE									SPACE		250
251		SPACE									SPACE		252
253		SPACE									SPACE		254
255		SPACE									SPACE		256
257		SPACE									SPACE		258
259		SPACE									SPACE		260
261		SPACE									SPACE		262
263		SPACE									SPACE		264
265		SPACE									SPACE		266
267		SPACE									SPACE		268
269		SPACE									SPACE		270
271		SPACE									SPACE		272
273		SPACE									SPACE		274
275		SPACE									SPACE		276
277		SPACE									SPACE		278
279		SPACE									SPACE		280
281		SPACE									SPACE		282
283		SPACE									SPACE		284
285		SPACE									SPACE		286
287		SPACE									SPACE		288
289		SPACE									SPACE		290
291		SPACE									SPACE		292
293		SPACE									SPACE		294
295		SPACE									SPACE		296
297		SPACE									SPACE		298
299		SPACE									SPACE		300
301		SPACE									SPACE		302
303		SPACE									SPACE		304
305		SPACE									SPACE		306
307		SPACE									SPACE		308
309		SPACE									SPACE		310
311		SPACE									SPACE		312
313		SPACE									SPACE		314
315		SPACE											