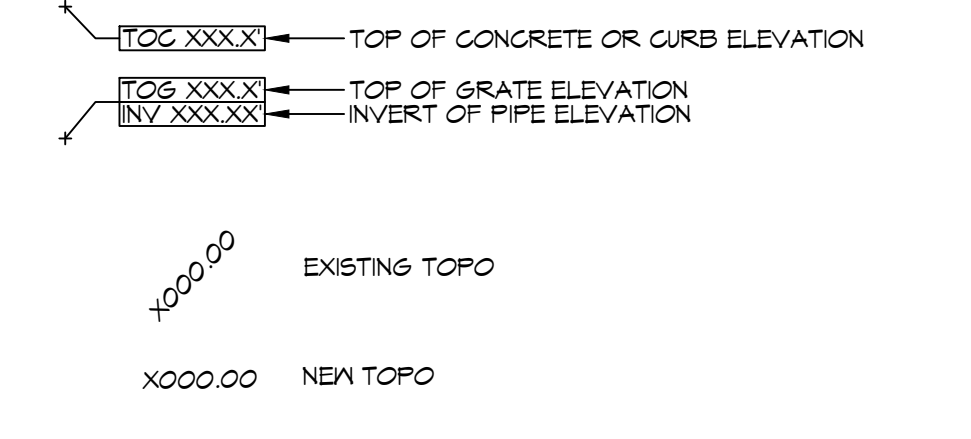


GENERAL PAVING NOTES

- ALL NEW CONCRETE SHALL HAVE A MINIMUM COMPRESSIVE STRENGTH OF 4,000 PSI AT 28 DAYS AND A MINIMUM THICKNESS OF 6". CONCRETE MIX SHALL BE IN ACCORDANCE WITH THE LATEST REVISION OF ASTM C-150 TYPE 1.
- CONCRETE PAVING THICKNESS SHALL VARY AS FOLLOWS:
 - APRONS & LOADING AREAS = 8" THICKNESS
 - DRIVE LANES & PARKING AREAS = 6" THICKNESS (STANDARD UNO)
- ALL REINFORCING STEEL SHALL MEET ASTM-A615 (GRADE 60).
- ALL REINFORCING STEEL SHALL BE SECURELY SUPPORTED TO PREVENT BOTH VERTICAL AND HORIZONTAL MOVEMENT DURING CONCRETE PLACEMENT. ALL CONTROL AND EXPANSION JOINTS SHALL BE LOCATED AND INSTALLED AS SHOWN ON THE PAVING PLAN AND IN ACCORDANCE WITH THE MANUFACTURER'S RECOMMENDATIONS.
- ALL SUB GRADE FILL SHALL BE SELECT GRANULAR MATERIAL COMPACTED TO 95% STANDARD PROCTOR DENSITY IN A MAXIMUM OF 6" LIFTS.
- ANY WORK WITHIN THE ROADWAY OR ADJACENT TO THE ROADWAY CAUSING AN INTERFERENCE TO VEHICULAR TRAFFIC MUST CONFORM TO THE REQUIREMENTS SET FORTH BY THE UNIFORM MANUAL OF TRAFFIC CONTROL DEVICES OF THE STATE OF LOUISIANA. THE CONTRACTOR MUST FURNISH ALL NECESSARY TRAFFIC SIGNS AND/OR BARRICADES AND MAINTAIN THEM DURING CONSTRUCTION ACTIVITY.

PAVING LEGEND

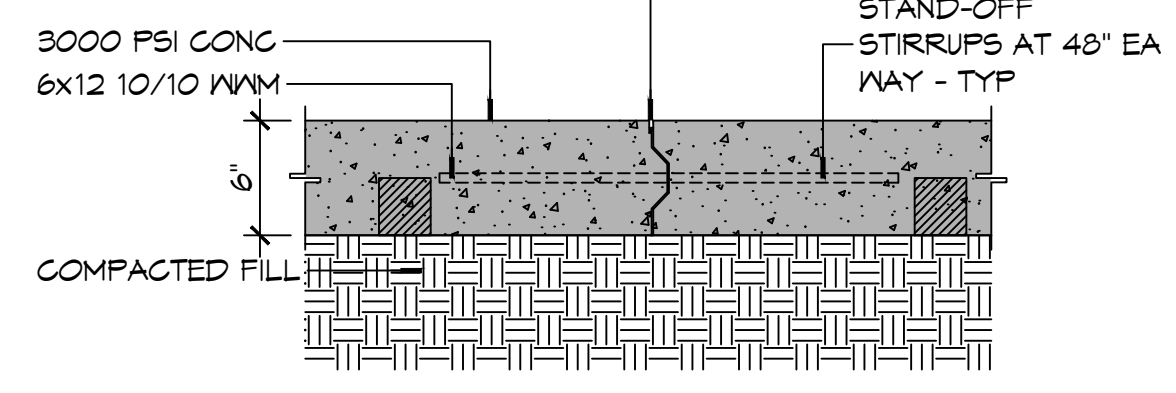


NO ADVERSE IMPACT TO ADJACENT PROPERTIES

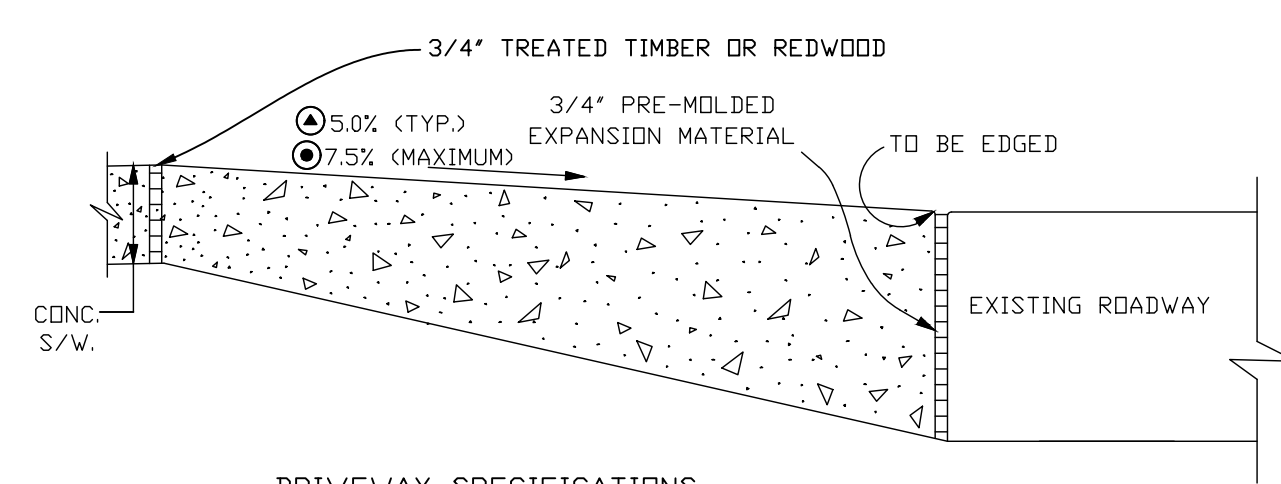
AREA RESULTS IN A NEGLIGIBLE CHANGE FROM THE EXISTING RUNOFF COEFFICIENT (C) AND RATE OF RUNOFF AND DRAINAGE PATTERNS ARE TO REMAIN THE SAME.

6" MTL KEYWAY JOINT SYSTEM NOTE:

LONGITUDINAL JOINTS (LJ): No.5 DEFORMED DONEL ROD 24" L @ 24" O.C.
 TRANSVERSE JOINTS (TJ): No.5 SMOOTH DONEL ROD 24" L @ 24" O.C.
 EXP MTL KEYWAY JOINT



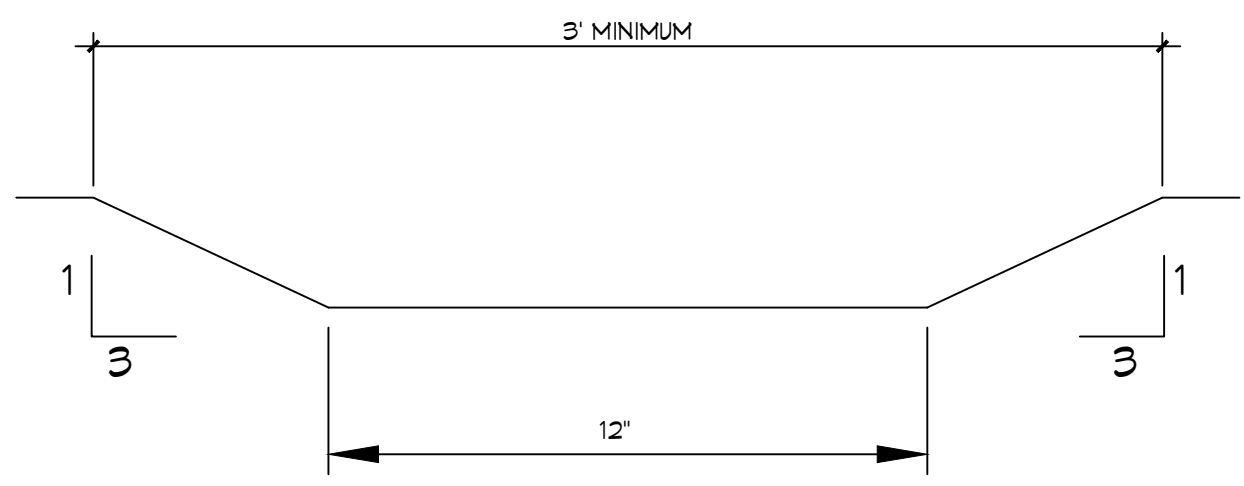
PAVING DETAIL
SCALE: 1"=1'-0"



DRIVEWAY SPECIFICATIONS

ALL DRIVEWAYS BETWEEN STREET AND PROPERTY LINE TO BE CONSTRUCTED OF PORTLAND CEMENT CONCRETE WITH A COMPRESSIVE STRENGTH 4000 P.S.I. IN TWENTY-EIGHT (28) DAYS AND A MINIMUM THICKNESS OF EIGHT (8) INCHES.

DRIVEWAY APRON
SCALE: 1"=1'-0"



SWALE DETAIL
SCALE: 1"=1'-0"

DAMMON ENGINEERING, INC.
LOUISIANA & MISSISSIPPI

www.dammonengineering.com
 info@dammonengineering.com
 Chief Engineer: Brian Mistich, PE
 State of Louisiana License No. 30187
 State of Mississippi License No. 147049
 Phone: 985.649.8832

REVISIONS	DATE	DESCRIPTION

SEAL:

APARTMENT AND OFFICE RAILIN CARTER

1720 N. 21ST AVENUE
 COVINGTON, LA. 70439
 JOB No: 2026 DATE: 06-09-2026
 DRAWN BY: CKD CHECKED BY: BAY

SHEET TITLE:
 SITE DRAINAGE PLAN, FILL PLAN AND DETAILS

DRAWING NUMBER:

C101

U.S. HIGHWAY NO. 190 (BUS.)
1 SITE DRAINAGE PLAN
 SCALE: 1"=20'-0"