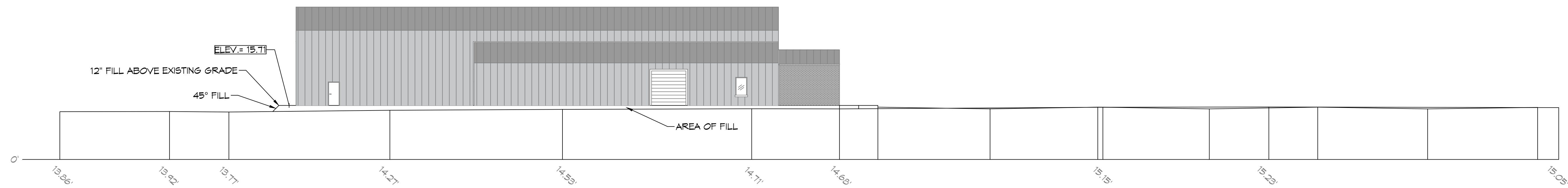
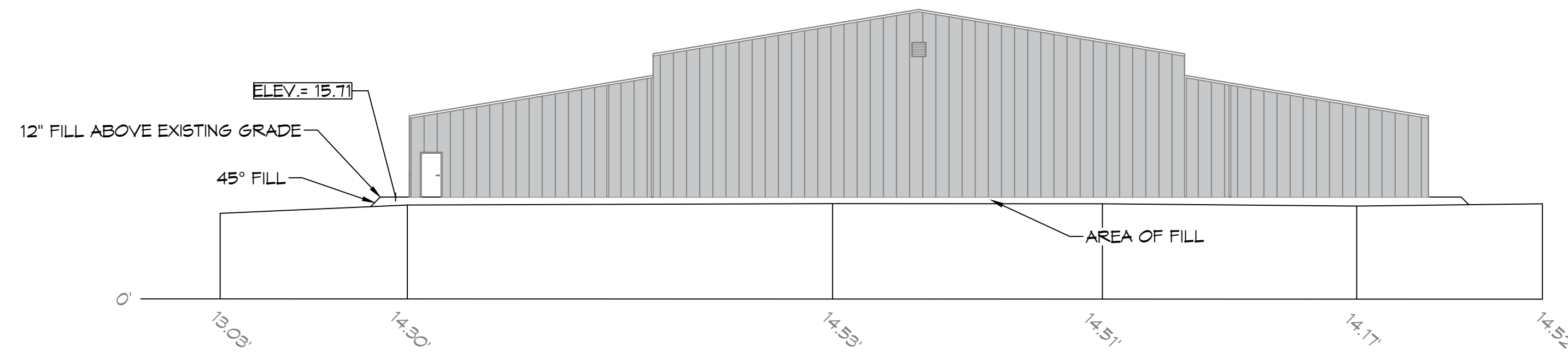


FILE NAME: C:\Users\paulm2222\Desktop\paulm2222 - Proj\John Paul Bishop Auditorium\General\Drawings\C103 - PA - Paving Plan.dwg, Thursday, February 19, 2026, 10:30:10 AM



CROSS SECTION
SCALE: 1/16" = 1'-0"



CROSS SECTION
SCALE: 1/16" = 1'-0"

DAMMON
ENGINEERING, INC.
 LOUISIANA & MISSISSIPPI

www.dammonengineering.com
 info@dammonengineering.com
 Chief Engineer: Brian Mistich, PE
 554 Old Spanish Trail
 Slidell, LA 70468
 PH: 985.649.5832 F: 985.641.9950

#	DESCRIPTION	DATE



NEW AUDITORIUM
POPE JOHN PAUL II
HIGH SCHOOL

1901 LAQUAS DR
 SLIDELL, LA 70461

DRAWN BY: BAW
 CHECKED BY: CKD
 DATE: 02-19-2026
 JOB No: 2522

SHEET TITLE:
PAVING PLAN

DRAWING NUMBER:
C103

DESIGN
 EXCEPTION