

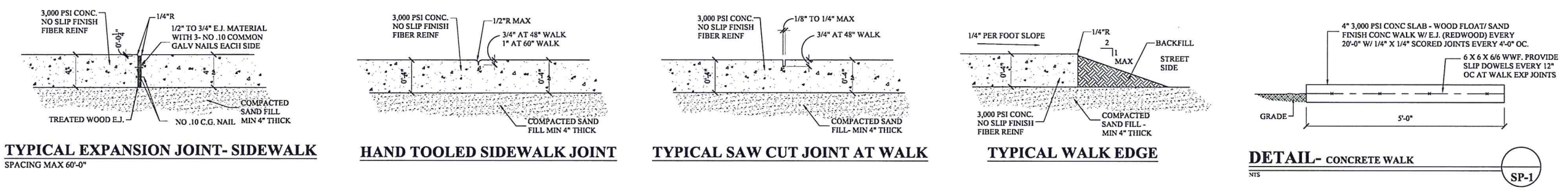
REVISIONS	BY



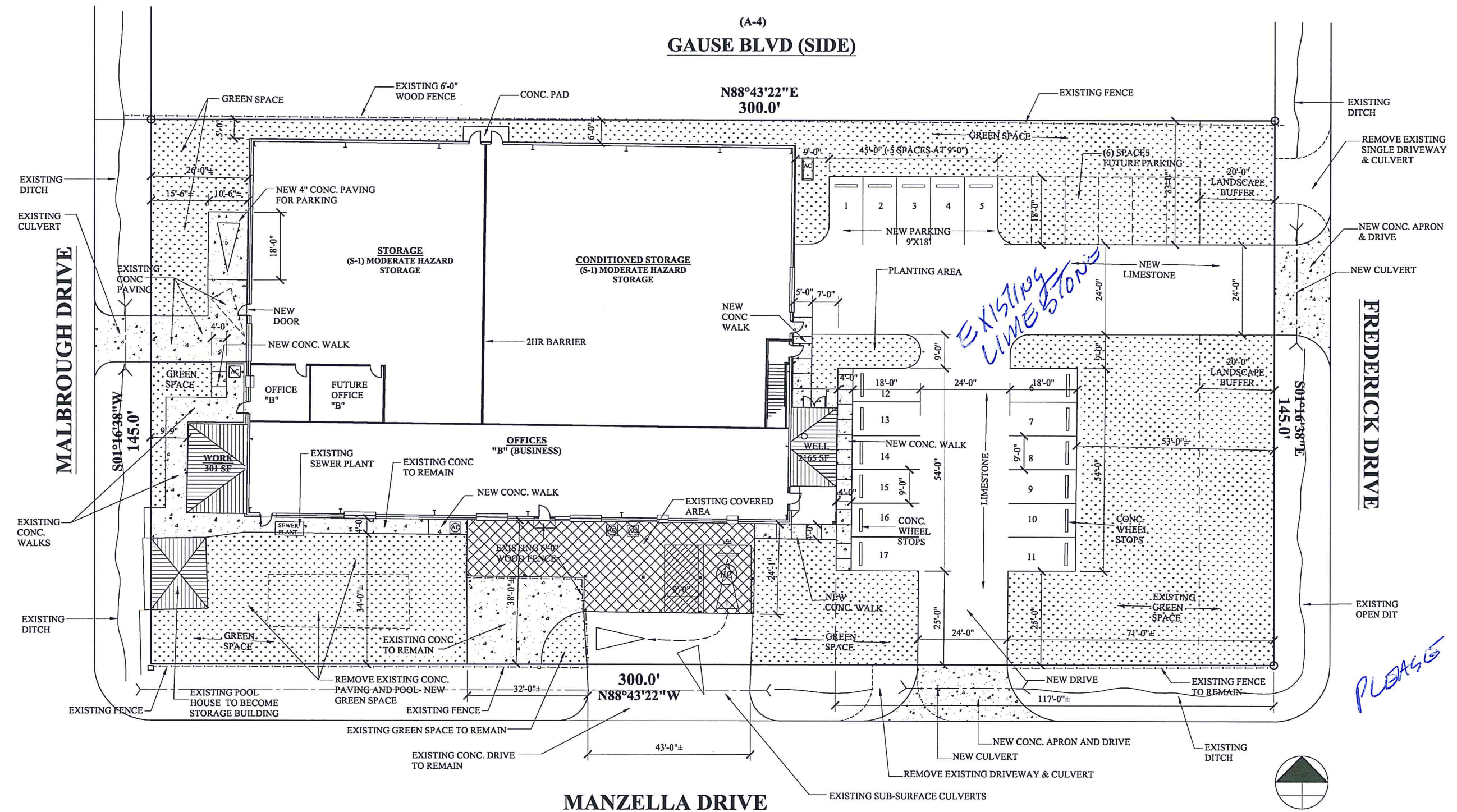
NEW OFFICE/ STORAGE
 38299 MANZELLA DRIVE
 SLIDELL, LOUISIANA 70461

JOSEPH F. SCHNEIDER JR., AIA
 ARCHITECT
 LA #4206 MS #3020 AL #8724 FL #AR95908 TX #24294
 105 EVANGELINE DRIVE, SLIDELL, LOUISIANA 70460
 (985) 290-6648 jfsarchitect@charter.net

DRAWN	J. SCHNEIDER
CHECKED	J. SCHNEIDER
DATE	11/18/2024
SCALE	AS NOTED
JOB NO.	
SHEET	SP-1
OF	SHEETS



(A-4)
GAUSE BLVD (SIDE)



SITE PLAN- NEW WORK

SCALE: NTS

*PLEASE SHOW ALL THE ROADS EDGES WITH ALL IMPROVEMENTS
 & THE INVERTS AT THE CURBS*

THESE DESIGN AND CONSTRUCTION DOCUMENTS AT THE SOLE PROPERTY OF JOSEPH F. SCHNEIDER, JR., ARCHITECT. NO USE OR REPRODUCTION OF THESE DOCUMENTS OR PARTIAL USE OR PARTIAL REPRODUCTION IS ALLOWED. NO USE OF THESE DRAWINGS WITHOUT THE WRITTEN EXPRESSED PERMISSION OF JOSEPH F. SCHNEIDER, JR. ARCHITECT IS ALLOWED.

SP-1