

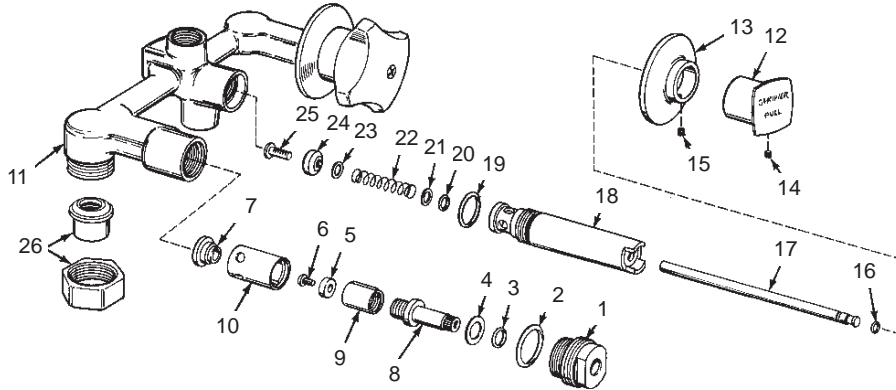
KOHLER® SERVICE PARTS

BATH AND SHOWER DIVERTER VALVE ASSEMBLY

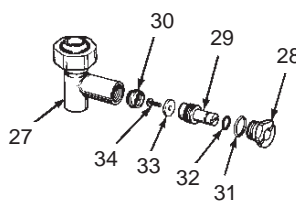
FLAIR SERIES BATH AND SHOWER DIVERTER VALVE ASSEMBLY
 FLAIR II SERIES BATH AND SHOWER DIVERTER VALVE ASSEMBLY
 TRITON II SERIES BATH AND SHOWER DIVERTER VALVE ASSEMBLY
 ALTERNA SERIES BATH AND SHOWER DIVERTER VALVE ASSEMBLY

(SEE EXPANDED "NOTES" SECTION ON FOLLOWING PAGE FOR PRODUCT NUMBERS)
 ORDER BY KIT NUMBER OR PART NUMBER, NOT ITEM NUMBER OR KIT LETTER.

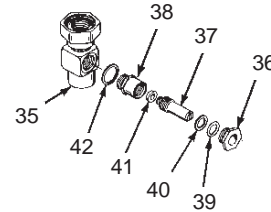
Item	Ordering Options Part No. or Kit
VALVE ASSEMBLY	
1	34253
2, 3, 4, 5, 6, 7	D, E
8, 9, 10	D
11	*
12, 13	F
14, 15	F, G
16, 17, 18, 19, 20,	H
21, 22, 23, 24, 25	H
26	I or J



Item	Ordering Options Part No. or Kit
STOPS	
27	*
28, 29, 30	K
31, 32, 33, 34	K, L
35	O or P
36, 37, 38	O or P, Q
39, 40, 41, 42	O or P, Q, R

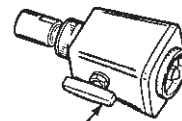
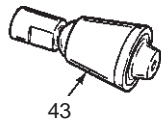


PRE-1985**



POST-1985**

Item	Ordering Options Part No. or Kit
SPOUTS AND SHOWERHEADS	
43	K-7371‡■
44	K-7331‡■
45	29727‡
46	41995‡



45

46

OVER

NOTES:

- * Not available as a service part.
- ** Post-1985 stop is interchangeable with pre-1985 stop.

LEGEND:

- ‡ Specify Finish.
- Parts further exploded within catalog; see INDEX.
- § Reference Number Only.

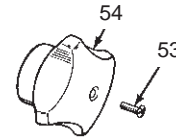
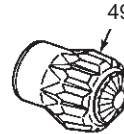
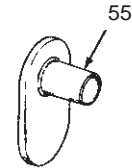
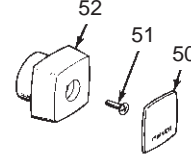
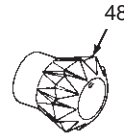
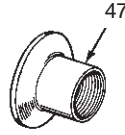
BATH AND SHOWER FITTINGS

FLAIR SERIES	BATH AND SHOWER DIVERTER VALVE ASSEMBLY
FLAIR II SERIES	BATH AND SHOWER DIVERTER VALVE ASSEMBLY
TRITON II SERIES	BATH AND SHOWER DIVERTER VALVE ASSEMBLY
ALTERNA SERIES	BATH AND SHOWER DIVERTER VALVE ASSEMBLY

(SEE NOTES SECTION FOR PRODUCT NUMBERS)
ORDER BY KIT NUMBER OR PART NUMBER, NOT ITEM NUMBER OR KIT LETTER.

Ordering Options

Item	Part No. or Kit
ESUTCHEONS AND HANDLES	
47	C
48, 49	M
50	A
51	B
52	29718‡
53	N
54	S
55	T



Kit Ordering Information

Kit	Kit Part No.	Kit Name
A	29747	Index Scaps
B	30105	Screw
C	30071‡	Escutcheon
D	30002	Valve Replacement
E	30294	Valve Rebuilding
F	20365‡	Knob and Escutcheon
G	30216‡	Set Screw
H	42011‡	Divertor Valve Replacement
I	30204	Union S.A. (1/2" I.P.)
J	30203	Union S.A. (5/8" O.D. Copper)
K	30304	Stop Rebuilding (Major)
L	30291	Stop Rebuilding (Minor)
M	106299§■	Flair or Flair II Handle Options
N	30097	Screw
O	21310	Stop Replacement (1/2" I.P.)
P	21314	Stop Replacement (5/8" O.D. Copper)
Q	21434	Stop Rebuilding (Major)
R	21433	Stop Rebuilding (Minor)
S	30021‡	Triton II Chrome Handle
T	30073	Oval Escutcheon

Kit Contents

Set of 4 pr, Item 50, 4 colors
 2 ea., Item 51
 2 ea., Item 47
 1 ea., Items 2 thru 10
 2 ea., Items 2 thru 7
 1 ea., Items 12 thru 15
 1 ea., Items 14 and 15
 1 ea., Items 16 thru 25
 2 ea., Item 26
 2 ea., Item 26
 2 ea., Items 28 thru 34
 2 ea., Items 31 thru 34
 See INDEX
 2 ea., Item 53
 1 ea., Items 35 thru 42
 1 ea., Items 35 thru 42
 2 ea., Items 36 thru 42
 2 ea., Items 39 thru 42
 1 ea. Hot, 1 ea. Cold; Item 54
 2 ea., Item 55

KITS MAY INCLUDE EXTRA PARTS

NOTES: PRODUCT NUMBERS AND DESCRIPTIONS

Alterna Series

K-6932 Divertor Bath and Shower

Flair Series

K-7014-FL Divertor Bath and Shower

Flair II Series

K-7014-DB Divertor Bath and Shower

Triton II Series

K-7014-T Divertor Bath and Shower

K-7022-T Divertor Bath and Shower/Stops

LEGEND:

‡ Specify Finish.

■ Parts further exploded within catalog; see INDEX.

§ Reference Number Only.