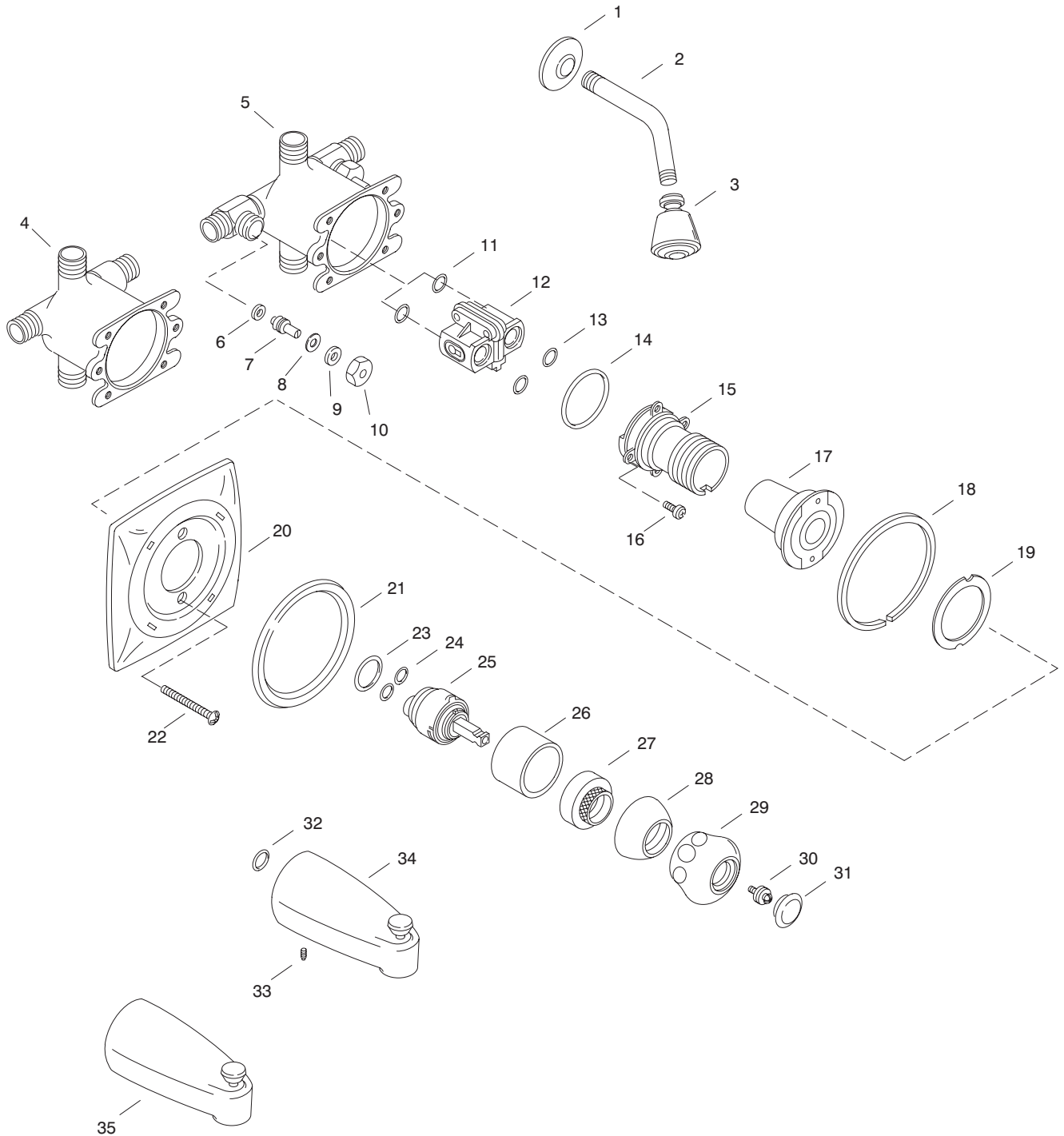


# KOHLER<sup>®</sup> SERVICE PARTS

CORALAIS™ BATH AND SHOWER FAUCET  
K-15132-\*\*-BA, K-15134-\*\*-BA,  
K-15141-\*\*-BA, K-15143-\*\*-BA,  
K-15153-\*\*-BA, K-15155-\*\*-BA



Variation and/or finish/color code may be required when ordering.

### SERVICE PARTS

ITEM NO.	PART NO.	DESCRIPTION
1	20429	Flange, Shower Arm
2	51410	Shower Arm
3	57999	Shower Head Assembly
4	71916	Body, Valve, w/o Stop Bodies
5	71917	Body, Valve, w/Stop Bodies
6	20961	Washer, .185 x .505
7	40287	Stem, Stop
8	40291	Washer
9	40288	Packing
10	40289	Pack Nut
11	52480	O-Ring, -013 x .426
12		Available in Service Kit Only
13	52479	O-Ring, -016 x .614
14	42043	O-Ring
15	71812	Valve Body
16	21980	Screw, .250-20 UNC-2A x .500
17	71853	Guard, Plaster
18	71813	Gasket Escutcheon OD
19	71814	Gasket Escutcheon ID
20		Available in Service Kit Only
21	71818	Face Plate Assembly, Marked
22	22154	Screw, 10-24 NC-2A x 2.125
23	71015	O-Ring
24	33993	O-Ring, 011
25	30413	Valve Unit Single Control
26	71816	Sleeve
27	71509	Bonnet
28	500353	Cover Snap-On
29	71520	Handle
30	71508	Screw Subassembly
31	71909	Mixer Plug Button Marked
32	32657	O-Ring, 114"
33	46074	Screw, .250-20 UNC x .50
34	42440	Diverter Spout (Slip Fit for 5/8" O.D.)
35	40242	Diverter Spout (1/2" I.P. Connection)

### SERVICE KITS

PART NO.	ITEM NO.	QTY.	DESCRIPTION
20383			Shower Arm Assembly
	1	1 ea.	Flange, Shower Arm
	2	1 ea.	Shower Arm
30495			Stem Assembly Stop Kit
	6	2 ea.	Washer, .185 x .505
	7	2 ea.	Stem, Stop
	8	2 ea.	Washer
	9	2 ea.	Packing
	10	2 ea.	Pack Nut
500520			Pressure Balancing Body
	11	2 ea.	O-Ring, -013 x .426
	12	1 ea.	Body Subassembly
	13	2 ea.	O-Ring, -016 x .614
71839			Coralais Repair Kit
	18	1 ea.	Gasket Escutcheon OD
	19	1 ea.	Gasket Escutcheon ID
	20	1 ea.	Escutcheon
	21	1 ea.	Face Plate Assembly, Marked
71840			Coralais Repair Kit
	29	1 ea.	Handle
	30	1 ea.	Screw Subassembly
	31	1 ea.	Mixer Plug Button Marked

Variation and/or finish/color code may be required when ordering.