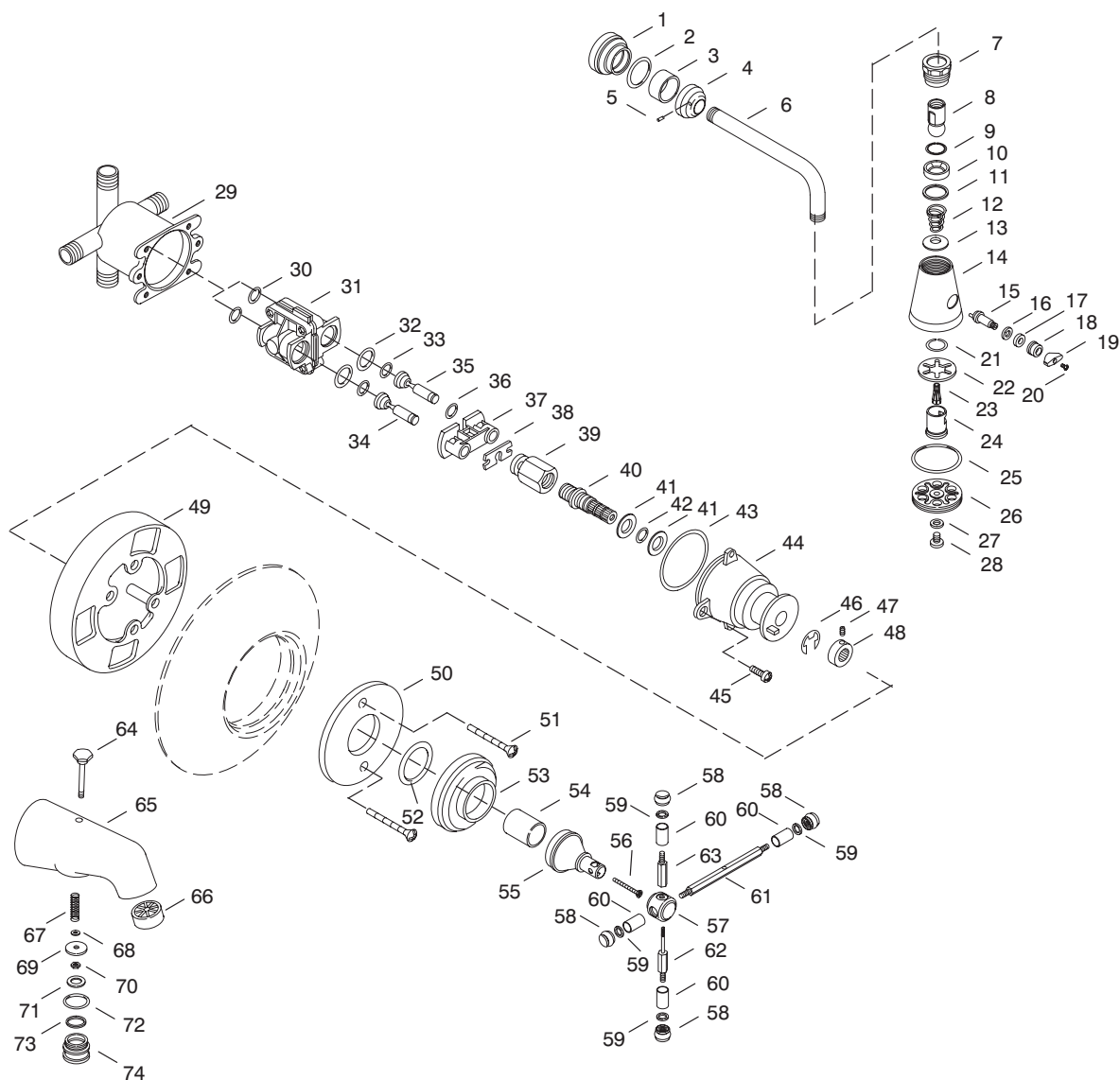


KOHLER[®] SERVICE PARTS

IV GEORGES BRASS™ RITE-TEMP™
BATH AND SHOWER FAUCET
K-6808-XX-**-AA/BA,
K-6809-XX-**-AA/BA, K-6810-XX-**-AA



SERVICE PARTS

ITEM NO.	PART NO.	DESCRIPTION	ITEM NO.	PART NO.	DESCRIPTION
1	36728	Escutcheon	19	29508	Handle for Volume Reg
2	41364	O-Ring, -.025 x 1.176	20	29476	Screw, 6-32 NC-2A x .313
3	36638	Sleeve, Large	21	29424	Snap Ring
4	36662	Collar, Shower Arm	22	29428	Washer, Spring
5	32966	Screw, 8-32 NC-2A x .188	23	29420	Plunger, Shower
6	24898	Shower Arm	24	29422	Crank Tube
7	29417	Locknut, Multi-Spray Head	25	29429	O-Ring, 140
8	57346	Ball Joint Assembly	26	58003	Face, Shower Head
9	52843	Washer, Split	27	29501	Washer, 17/64 ID x 1/2 OD
10	24981	Packing for Shower Head	28	29418	Screw, .250-20 UNC-2A x .625
11	29266	Washer, 57/64 x 1-11/64	29	71916	Body, Pressure Balanced (w/o Stops)
12	29497	Spring, Conical	30	52480	O-Ring, -.013 x .426
13	29520	Washer, 1/2 ID x 1.300 OD	31		Available in Service Kit Only
14	36661	Shower Head Assembly	32	52479	O-Ring, -.016 x .614
15	29426	Crank for Multi-Stream	33	52478	O-Ring, -.108 x .237
16	35719	Washer, .390 ID x .590 OD	34		Available in Service Kit Only
17	29549	Crank, Packing	35		Available in Service Kit Only
18	29548	Nut, Packing 5/8-32 NS	36	51251	O-Ring

Variation and/or finish/color code may be required when ordering.

SERVICE PARTS

ITEM NO.	PART NO.	DESCRIPTION
37	52450	Retainer Plate
38	52454	Stem Bar
39	52455	Stem
40	52453	Spindle
41	52456	Washer
42	52457	O-Ring, -011 x .301
43	52477	O-Ring, -031 x 1.739
44	52451	Cap
45	21980	Screw, .250-20 UNC-2A x .500
46	50541	E-Ring
47	20925	Screw, .164-32 UNC-2A x .313
48	52452	Collar, Spindle
49	58564	Plaster Guard
50	36645	Washer, Centering
51	22154	Screw, 10-24 NC-2A x 2.125
52	48694	O-Ring, -030 x 1.614
53	36644	Escutcheon (Rite-Temp)
54	42285	Sleeve, 1-1/2"
55	55774	Bonnet
56	53414	Screw, .164-32 UNC-2A x .750
57	55734	Cap, Center
58	36635	Cap, End
59	40097	Washer, .281 ID x .460 OD
60	55740	Sleeve
61	55739	Arm, Cross
62	55852	Stud
63	55738	Stud
64	20536	Lift Rod
65	38777	Diverter Spout
66	38808	Bath Steam Breaker
67	20494	Spring
68	51176	Washer
69	59347	Seal Plate, Diverter
70	41491	Nut, 10-24 NC-2B
71	51290	Gasket
72	38676	O-Ring, -024 x 1.114
73	38677	Gasket, 1.138 ID x 1.245 OD
74	38711	Cap for Diecast Diverter Spout

SERVICE KITS

PART NO.	ITEM NO.	QTY.	DESCRIPTION
21676	1	1 ea.	Escutcheon Assembly Large
	2	1 ea.	O-Ring, -025 x 1.176
	3	1 ea.	Sleeve, Large
	4	1 ea.	Collar, Shower Arm
	5	1 ea.	Screw, 8-32 NC-2A x .188
58314	7	1 ea.	Shower Head Assembly
	8	1 ea.	Locknut, Multi-Spray Head
	9	1 ea.	Ball Joint Assembly
	10	1 ea.	Washer, Split
	11	1 ea.	Packing for Shower Head
	12	1 ea.	Washer, 57/64 x 1-11/64
	13	1 ea.	Spring, Conical
	14	1 ea.	Washer, 1/2 ID x 1.300 OD
	15	1 ea.	Shower Head Assembly
	16	1 ea.	Crank for Multi-Stream
	17	1 ea.	Washer, .390 ID x .590 OD
	18	1 ea.	Crank, Packing
	19	1 ea.	Nut, Packing 5/8-32 NS
20	1 ea.	Handle for Volume Reg	
21	1 ea.	Screw, 6-32 NC-2A x .313	
22	1 ea.	Snap Ring	
23	1 ea.	Washer, Spring	
24	1 ea.	Plunger, Shower	
25	1 ea.	Crank Tube	
26	1 ea.	O-Ring, 140	
27	1 ea.	Face, Shower Head	
28	1 ea.	Washer, 17/64 ID x 1/2 OD	
		1 ea.	Screw, .250-20 UNC-2A x .625

PART NO.	ITEM NO.	QTY.	DESCRIPTION	
59384	33	2 ea.	Cap Subassembly	
	34	1 ea.	O-Ring, -108 x .237	
	35	1 ea.	Plunger, Cold	
	36	1 ea.	Plunger, Hot	
	37	1 ea.	O-Ring	
	38	1 ea.	Retainer Plate	
	39	1 ea.	Stem Bar	
	40	1 ea.	Stem	
	41	2 ea.	Spindle	
	42	1 ea.	Washer	
	43	1 ea.	O-Ring, -011 x .301	
	44	1 ea.	O-Ring, -031 x 1.739	
	46	1 ea.	Cap	
	47	1 ea.	E-Ring	
	48	1 ea.	Screw, .164-32 UNC-2A x .313	
	500521	48	1 ea.	Collar, Spindle
		30	2 ea.	Pressure Balancing Service Kit
		31	1 ea.	O-Ring, -013 x .426
32		2 ea.	Body Assembly	
33		2 ea.	O-Ring, -016 x .614	
34		1 ea.	O-Ring, -108 x .237	
35		1 ea.	Plunger, Cold	
36		1 ea.	Plunger, Hot	
37		1 ea.	O-Ring	
38		1 ea.	Retainer Plate	
39		1 ea.	Stem Bar	
40		1 ea.	Stem	
41		2 ea.	Spindle	
42		1 ea.	Washer	
43		1 ea.	O-Ring, -011 x .301	
44		1 ea.	O-Ring, -031 x 1.739	
500520		44	1 ea.	Cap
		45	2 ea.	Screw, .250-20 UNC-2A
	46	1 ea.	E-Ring	
	47	1 ea.	Screw, .164-32 UNC-2A x .313	
	48	1 ea.	Collar, Spindle	
	30	2 ea.	Pressure Balancing Body	
	31	1 ea.	O-Ring, -013 x .426	
	32	1 ea.	Body Subassembly	
	59772	32	2 ea.	O-Ring, -016 x .614
		33	2 ea.	Plunger Kit
		34	1 ea.	O-Ring, -108 x .237
		35	1 ea.	Plunger, Cold
		36	1 ea.	Plunger, Hot
		36	1 ea.	O-Ring
	36643	50	1 ea.	Washer & Escutcheon Assembly
		52	1 ea.	Washer, Centering
		53	1 ea.	O-Ring, -030 x 1.614
		38776	53	1 ea.
64			1 ea.	Diverter Spout Assembly
64			1 ea.	Lift Rod
65			1 ea.	Diverter Spout
66			1 ea.	Bath Steam Breaker
67			1 ea.	Spring
68			1 ea.	Washer
69			1 ea.	Seal Plate, Diverter
70			1 ea.	Nut, 10-24 NC-2B
71	1 ea.		Gasket	
72	1 ea.		O-Ring, -024 x 1.114	
74	1 ea.		Cap for Diecast Diverter Spout	
30147	74	1 ea.	Valve Service Kit	
	67	1 ea.	Spring	
	68	1 ea.	Washer	
	69	1 ea.	Seal Plate, Diverter	
	70	1 ea.	Nut, 10-24 NC-2B	
	71	1 ea.	Gasket	
	72	1 ea.	O-Ring, -024 x 1.114	
	73	1 ea.	Gasket, 1.138 ID x 1.245 OD	
	30424	73	1 ea.	Plug Assembly
		72	1 ea.	O-Ring, -024 x 1.114
		74	1 ea.	O-Ring, -024 x 1.114
		74	1 ea.	Cap for Diecast Diverter Spout

Variation and/or finish/color code may be required when ordering.