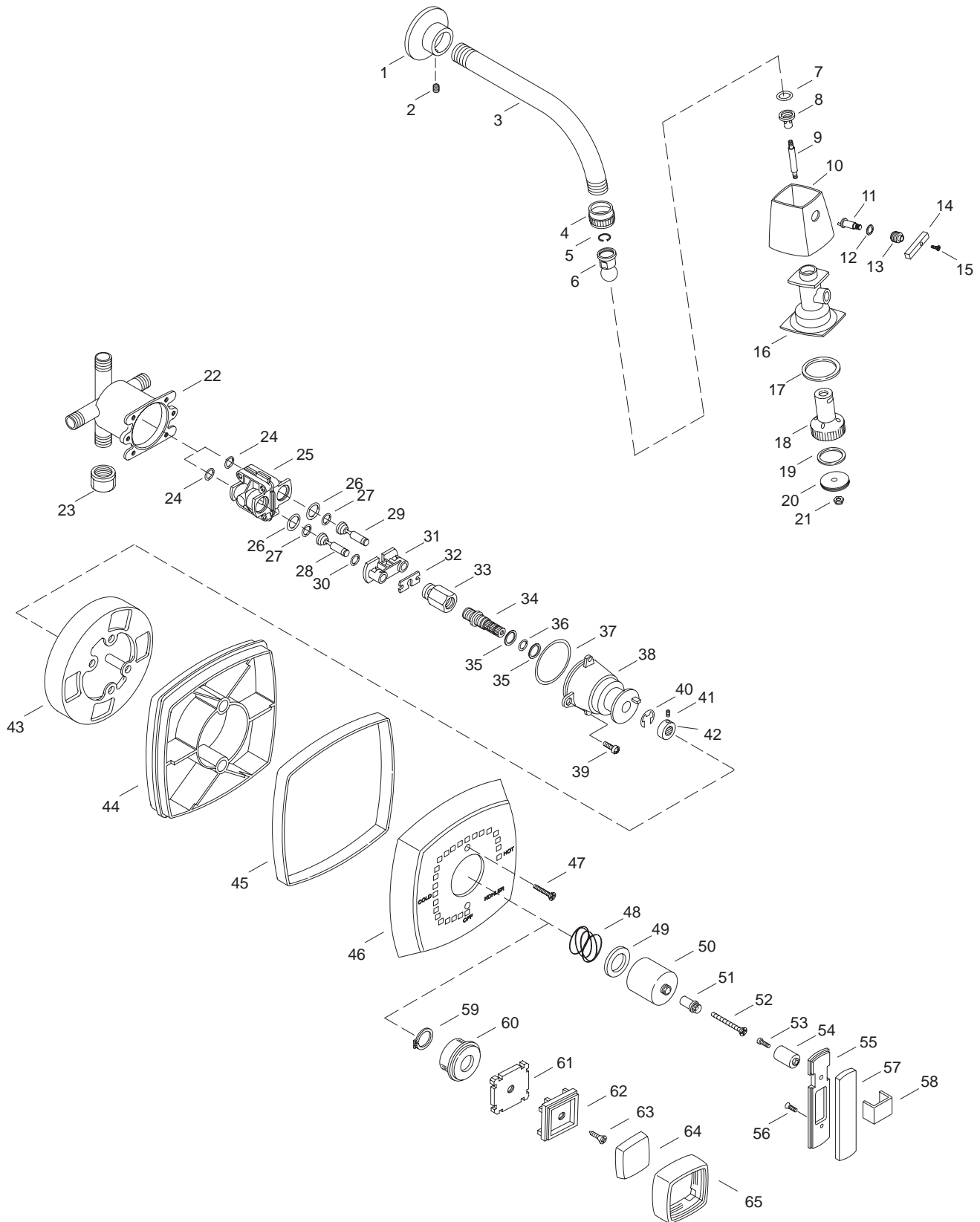


KOHLER[®] SERVICE PARTS

ALTERNA™ RITE-TEMP™ SHOWER FAUCETS K-6902-LV-**-AA/BA, K-6902-N-**-AA/BA, K-6904-LV-**-AA, K-6904-N-**-AA



Variation and/or finish/color code may be required when ordering.

SERVICE PARTS

ITEM NO.	PART NO.	DESCRIPTION	PART NO.	ITEM NO.	QTY.	DESCRIPTION
1		Available in Service Kit Only	20345			Flange & Set Screw Assembly
2	32966	Screw, 8-32 UNC-2A x .188		1	1 ea.	Flange
3	24898	Shower Arm		2	1 ea.	Screw, 8-32 UNC-2A x .188
4	50617	Lock Nut	58316			Shower Arm Assembly
5	50622	Washer		4	1 ea.	Lock Nut
6	57346	Ball Joint Assembly		5	1 ea.	Washer
7	56034	O-Ring, -209 x .671		6	1 ea.	Ball Joint Assembly
8	29742	Barrel, Showerhead		7	1 ea.	O-Ring, -209 x .671
9	29738	Rod, 1/4-28 UNF x 2.953		8	1 ea.	Barrel, Showerhead
10	29732	Showerhead Shroud		9	1 ea.	Rod, 1/4-28 UNF x 2.953
11		Available in Service Kit Only		10	1 ea.	Showerhead Shroud
12		Available in Service Kit Only		11	1 ea.	Stem, Square Shower
13	29740	Retainer		12	1 ea.	O-Ring
14	29743	Handle, Showerhead		13	1 ea.	Retainer
15	29476	Screw, 6-32 NC-2A x .313		14	1 ea.	Handle, Showerhead
16		Available in Service Kit Only		15	1 ea.	Screw, 6-32 NC-2A x .313
17	29736	Seal, 1.24 ID x 1.93 OD		16	1 ea.	Body Square Showerhead
18	29731	Shower Face Showerhead		17	1 ea.	Seal, 1.24 ID x 1.93 OD
19	29735	Seal, 1.33 ID x 1.52 OD		18	1 ea.	Shower Face Showerhead
20	58008	Face, Square Showerhead		19	1 ea.	Seal, 1.33 ID x 1.52 OD
21	29737	Nut, Cap 1/4-28 UNF x 3/8		20	1 ea.	Face, Square Showerhead
22	71916	Body, Valve, w/o Stop Bodies		21	1 ea.	Nut, Cap 1/4-28 UNF x 3/8
23	71933	Cap, 1/2" 14 IP	500521	24-42		Pressure Balancing Service Kit
24	52480	O-Ring, -013 x .426	500520	24-26		Pressure Balancing Body
25		Available in Service Kit Only	59384			Cap Subassembly
26	52479	O-Ring, -016 x .614		27	2 ea.	O-Ring, -108 x .237
27	52478	O-Ring, -108 x .237		28	1 ea.	Plunger, Cold
28		Available in Service Kit Only		29	1 ea.	Plunger, Hot
29		Available in Service Kit Only		30	1 ea.	O-Ring
30	51251	O-Ring		31	1 ea.	Retainer Plate
31	52450	Retainer Plate		32	1 ea.	Stem Bar
32	52454	Stem Bar		33	1 ea.	Stem
33	52455	Stem		34	1 ea.	Spindle
34	52453	Spindle		35	2 ea.	Washer
35	52456	Washer		36	1 ea.	O-Ring, -011 x .301
36	52457	O-Ring, -011 x .301		37	1 ea.	O-Ring, -031 x 1.739
37	52477	O-Ring, -031 x 1.739		38	1 ea.	Cap
38	52451	Cap		39	1 ea.	Screw, .250-20 UNC-2A
39	21980	Screw, .250-20 UNC-2A		40	1 ea.	E-Ring
40	50541	E-Ring		41	1 ea.	Screw, .164-32 UNC-2A
41	20925	Screw, .164-32 UNC-2A	59772	27-30		Plunger Kit
42	52452	Collar, Spindle	52707			Escutcheon Assembly
43	58564	Plaster Guard		44	1 ea.	Support
44	52830	Support		45	1 ea.	Gasket
45	52375	Gasket		46	1 ea.	Face Plate
46	52487	Face Plate		47	2 ea.	Screw
47	52705	Screw	73345			Handle Friction Kit
48	42286	Spring		48	1 ea.	Spring
49	73277	Friction Spacer		49	1 ea.	Friction Spacer
50	54548	Skirt	52702			Lever Handle, Rite-Temp
51	54547	Spline Adapter		50	1 ea.	Skirt
52	53414	Screw, .164-32 UNC-2A		51	1 ea.	Spline Adapter
53	54545	Screw, .112-40 UNC-3A		52	1 ea.	Screw, .164-32 UNC-2A
54	54546	Handle Post		53	1 ea.	Screw, .112-40 UNC-3A
55	52554	Lower Lever, Alterna		54	1 ea.	Handle Post
56	52779	Screw, .112-40 UNC-3A		55	1 ea.	Lower Lever, Alterna
57	52546	Insert, Brass Lever		56	1 ea.	Screw, .112-40 UNC-3A
58	52543	Strap, Lever Handle, Alterna		57	1 ea.	Insert, Brass Lever
59	46034	Retaining Ring		58	1 ea.	Strap, Lever Handle, Alterna
60	55357	Skirt, Base	55356			Handle Assembly
61	22490	Adapter, Handle		59	1 ea.	Retaining Ring
62	22454	Holder, Insert Large		60	1 ea.	Skirt, Base
63	53414	Screw, .164-32 UNC-2A x .375		61	1 ea.	Adapter, Handle
64	22494	Insert Brass Large		62	1 ea.	Holder, Insert Large
65	22491	Shell Large		63	1 ea.	Screw, .164-32 UNC-2A x .375
				64	1 ea.	Insert Brass Large
				65	1 ea.	Shell Large

SERVICE KITS

PART NO.	ITEM NO.	QTY.	DESCRIPTION
20350			Showerhead Assembly
	1	1 ea.	Flange
	2	1 ea.	Screw, 8-32 UNC-2A x .188
	3	1 ea.	Shower Arm

Variation and/or finish/color code may be required when ordering.