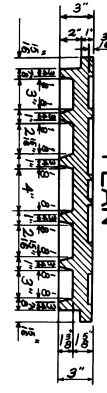
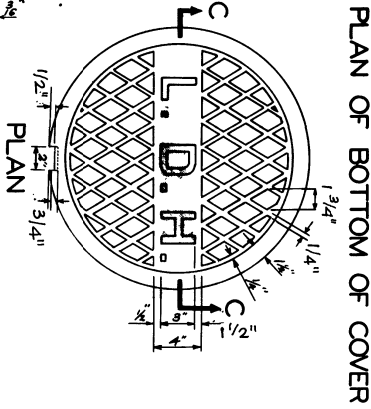
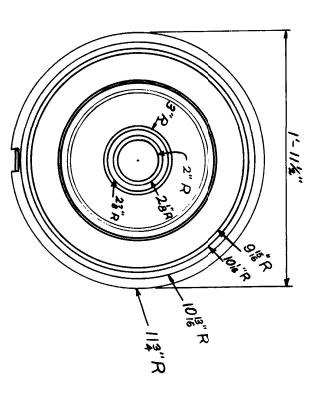


BILL OF MATERIALS FOR ONE MANHOLE (Detailed for V=2'-0")

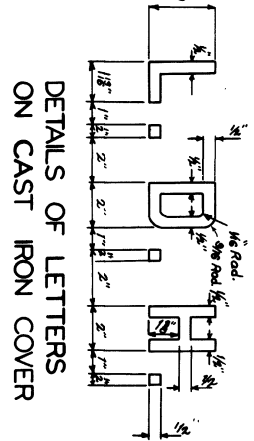
MARK	SIZE	SPACING	NO. REQUIRED	UNIT LENGTH	LOCATION
a	9/8"	10"	9	Depending on Size of Pipe	Transverse in Bottom of Slab
a	"	approx. 10"	Depending on Size of Pipe	"	Horizontal in End Walls
a	"	approx. 6"	10	"	Transverse in Top Slab
b	"	approx. 12"	4	"	Vertical in Side Wall
b ₂	"	approx. 9"	"	"	End Wall and Top Slab
c	1/2" ϕ	approx. 10"	"	"	Longitudinal in Bottom Slab and Side Walls
d	"	30" Maximum	12	9'-7"	Hoops in Walls of Cylinder
e	"	30" Radius	12	V14"	Vertical in walls of Cylinder

1 Cast Iron Cover Seat Weighing approximately 161 lbs.
 1 Cast Iron Cover Weighing approximately 203 lbs.

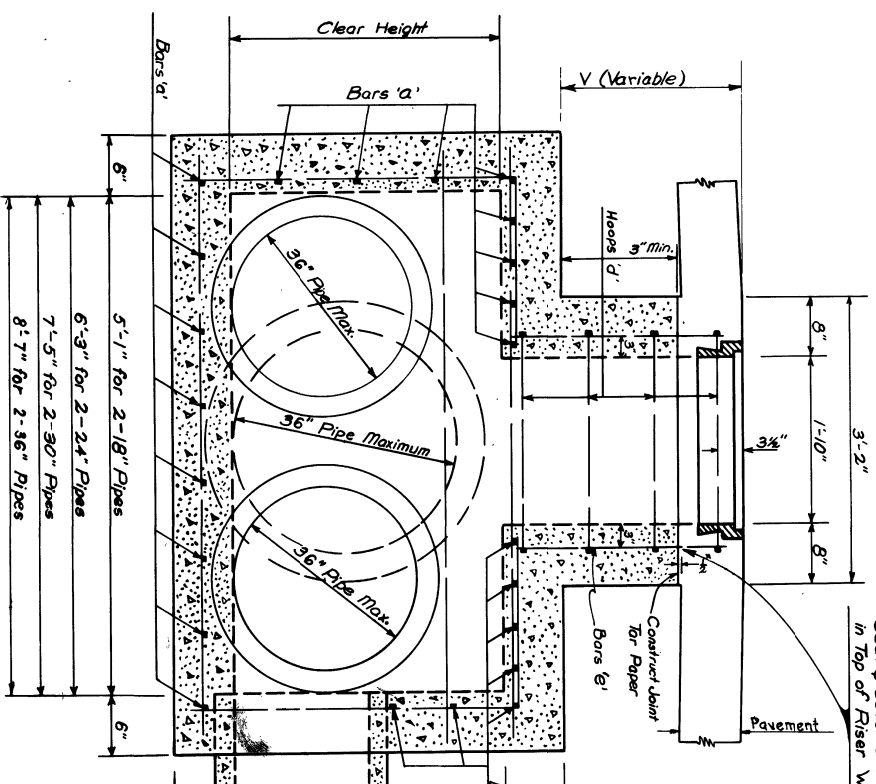
• Detailed for 24" Pipes in one Side Wall, 1-36" Pipe in Other Side Wall and 18" Pipe in one End Wall.



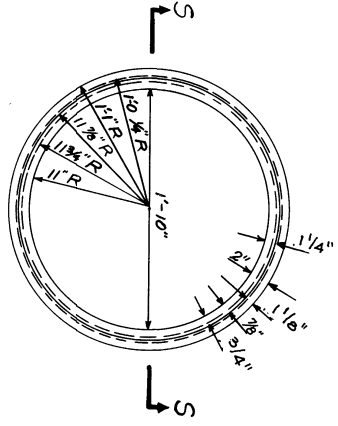
SECTION C-C
DETAILS OF C.I. COVER



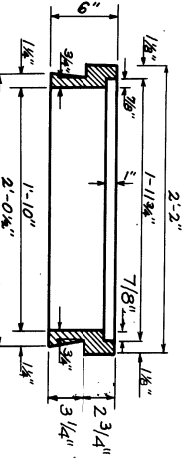
DETAILS OF LETTERS ON CAST IRON COVER



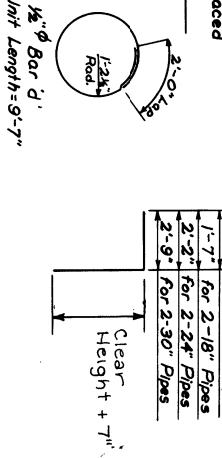
SECTION A-A



PLAN OF C.I. COVER SEAT



SECTION S-S
DETAILS OF C.I. COVER SEAT



NOTE: When Manhole is to be placed Outside of Roadway, Seat & Cover are to be placed in Top of Riser Wall.

STANDARD PLAN
R. C. MANHOLE
2-36" MAXIMUM PIPE CONNECTION

R-CB-12

STATE OF LOUISIANA
 DEPARTMENT OF HIGHWAYS

DESIGNED BY: THOMAS YALOW
 CHECKED BY: [Signature]
 IN CHARGE OF: Original Signed by Chief Engineer

DATE: MAY 1930

Note: The Contractor will not pour above the bottom of the slab until the paving adjacent to the basin has been completed.