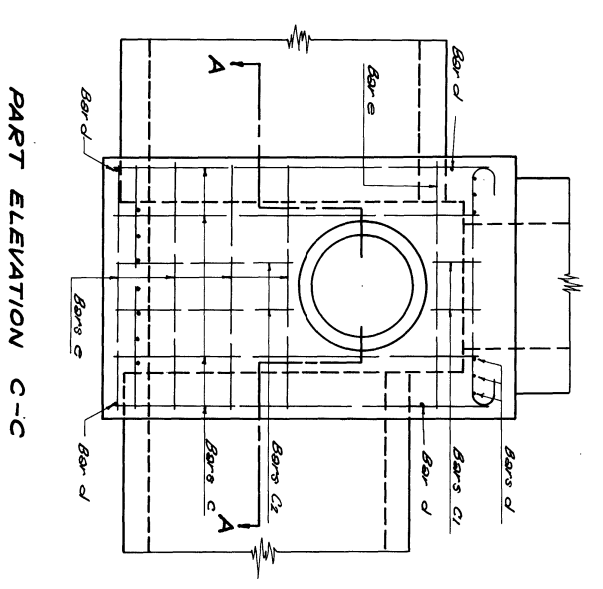
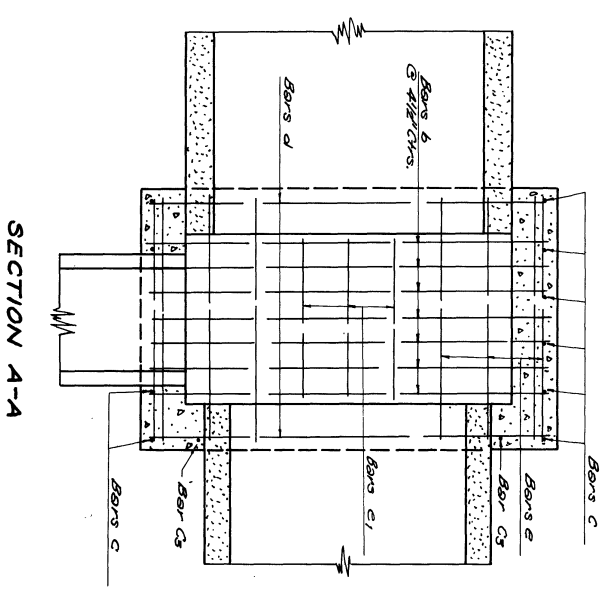
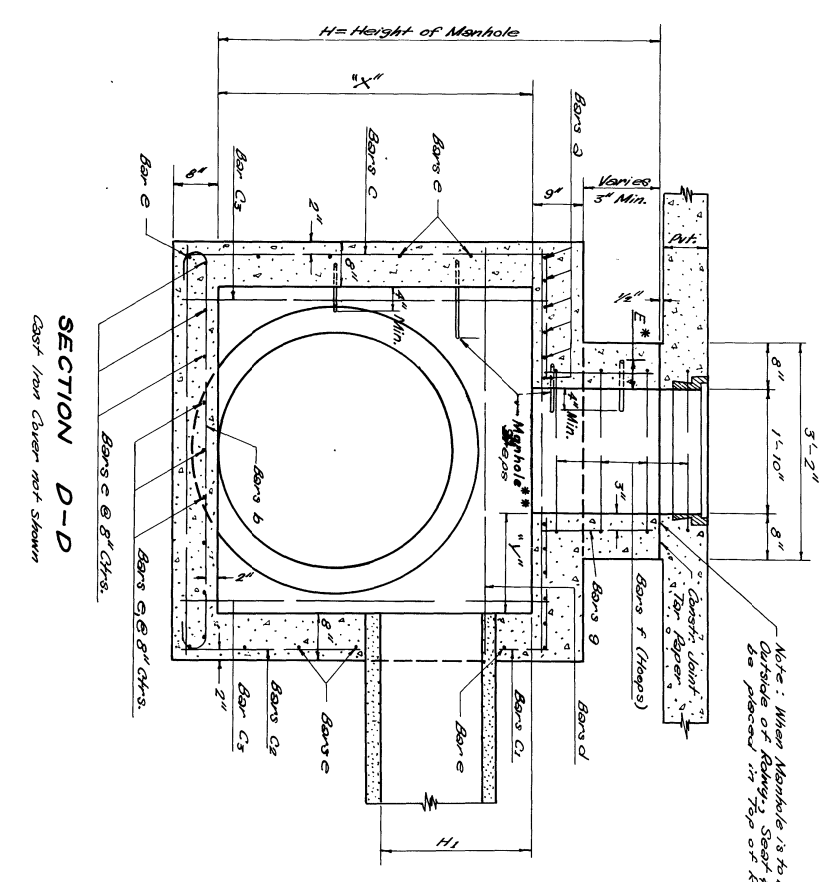
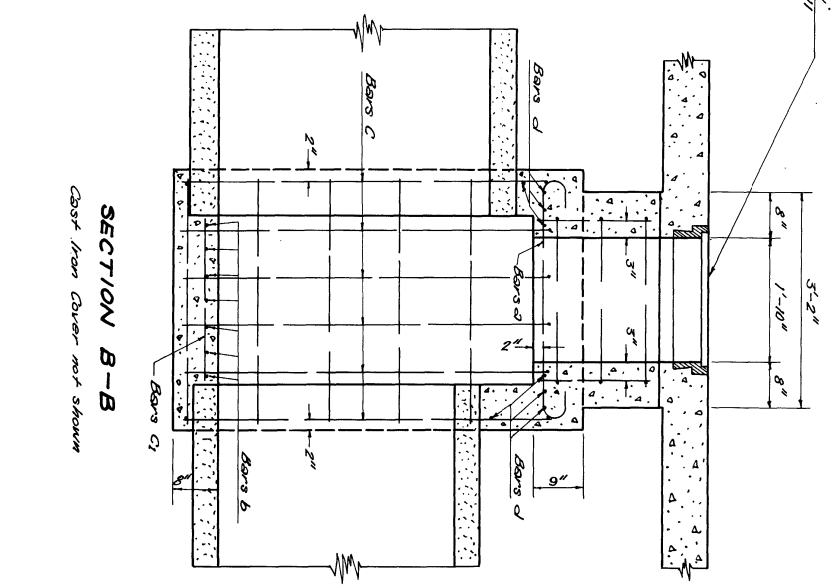
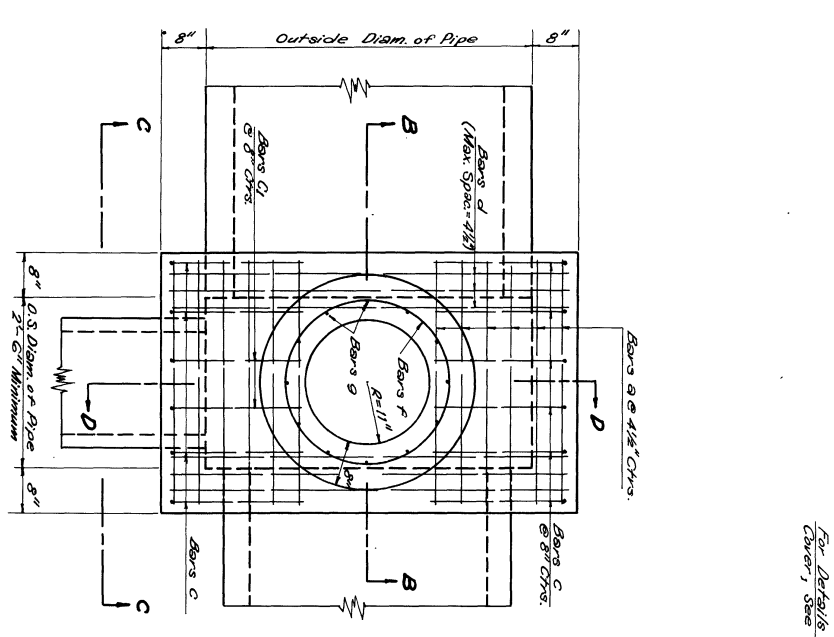


** For Approved Manhole Steps See L. D. H. Qualified Products List.
 * E Dimension is Embedment of Manhole Steps. To be as Specified on L. D. H. Qualified Products List.



PLAN
 Cast Iron Cover not shown.
 See Std. Plan R-CB-11

NOTE: For Details of C1, Slab, & Cover and any other information not shown, See Std. Plan R-CB-11

SECTION B-B
 Cast Iron Cover not shown

SECTION D-D
 Cast Iron Cover not shown

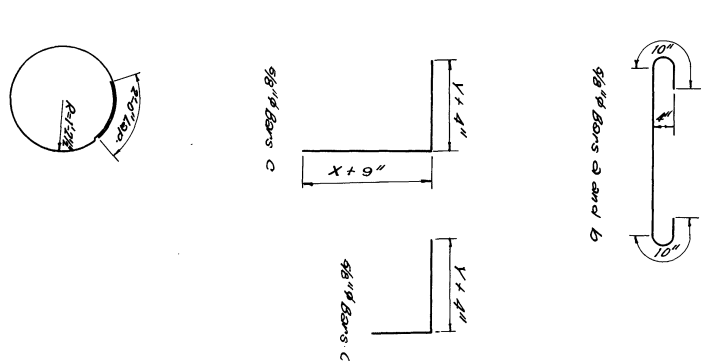
**APPROXIMATE QUANTITIES FOR ONE MANHOLE
 18" AND 42" PIPE INLETS
 48" PIPE OUTLET**

Mark	Size	No.	Unit Length	Total Length	Location
a	48" #	12	4'-10"	58'-0"	Transverse in Top Slab
b	"	7	7'-2"	50'-2"	Lengthwise " do "
c1	"	10	7'-3"	72'-6"	Horizontal " do "
c2	"	2	2'-6"	5'-0"	" do "
c3	"	2	2'-7"	5'-2"	" do "
d	18" #	10	5'-1 1/2"	59'-2"	Longitudinal - Top Slab & Hoops
e	"	10	5'-1 1/2"	59'-2"	Horizontal - Hoops & Bot. Slab
f	"	4	9'-7"	38'-4"	Hoops in Slab
g	"	12	1'-7"	19'-0"	Hoops in Rise

Total 48" Bars = 201'-8" Weight = 210 lbs.
 Total 18" Bars = 181'-7" Weight = 121 lbs.
 Total Reinforced Rein. Steel = 331 lbs.
 Class "A" Concrete = 2.50 Cu. Yds.
 Castings (See Std. Plan R-CB-11) = 56' 268.

Quantities shown above are not by items. Manhole is to be paid for as a unit, complete in place for each foot in change of 1/2" soil or subsoil. 428 Cu. Yds. of Class "A" concrete and 2-bars "e", 2-bars "f" and various lengths of vertical steel.

Note: When Manhole is to be used Outside of Raising, Slab & Cover are to be placed in Top of Floor Wall.



Note: The Contractor will not pour above the bottom of the slab until the pouring recess to the basin has been completed.

**STANDARD PLAN
 R. C. MANHOLE
 48" MAXIMUM PIPE CONNECTION
 MAX. HEIGHT OF MANHOLE = 8'**

DATE	REVISIONS	BY	DESCRIPTION
5-3-20	1	W.T.L.	As shown
5-7-24	2	W.E.M.	Detail of Steps Added
8-15-28	3	W.E.M.	Steel changed to 98" #
		W.E.M.	Checked R.L.G.
		W.E.M.	Checked R.L.G.

R-CB-20