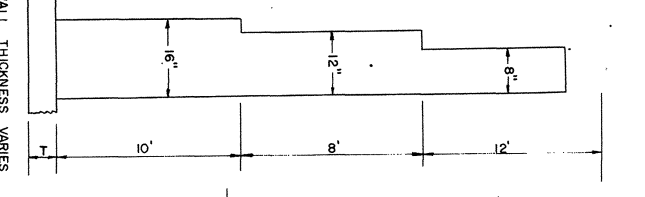
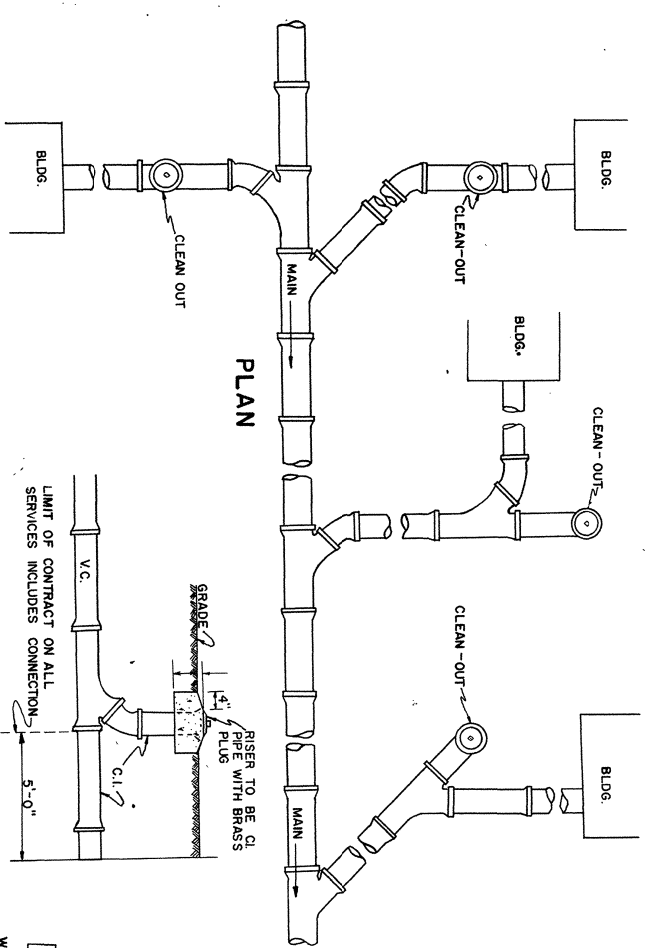
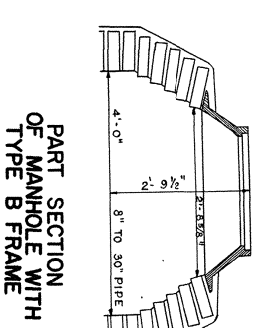
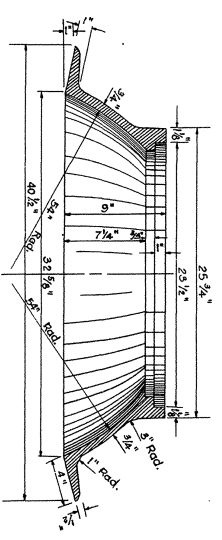
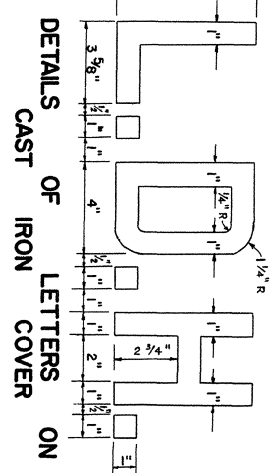
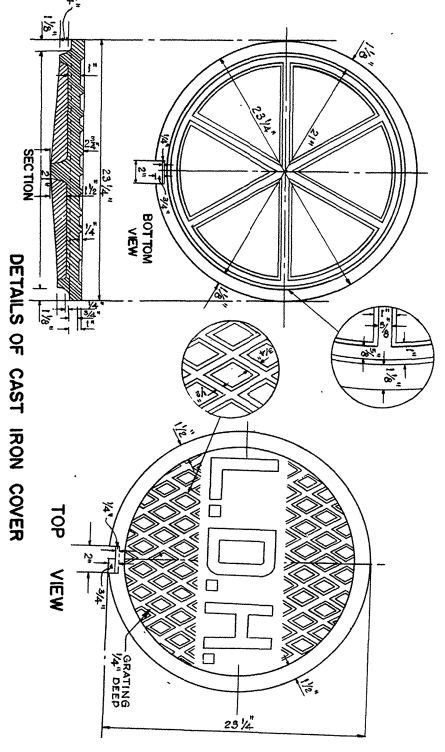
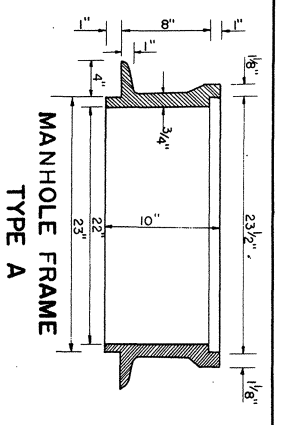
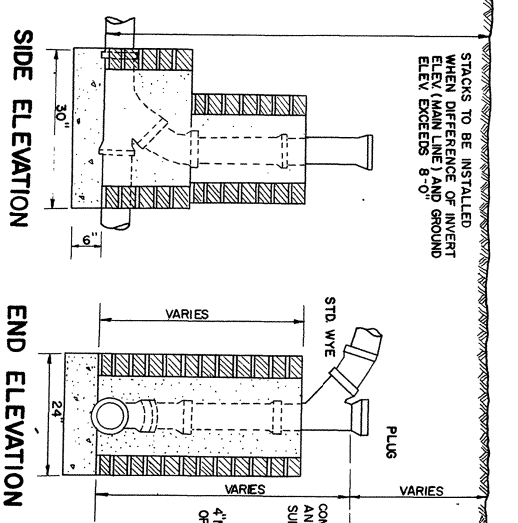
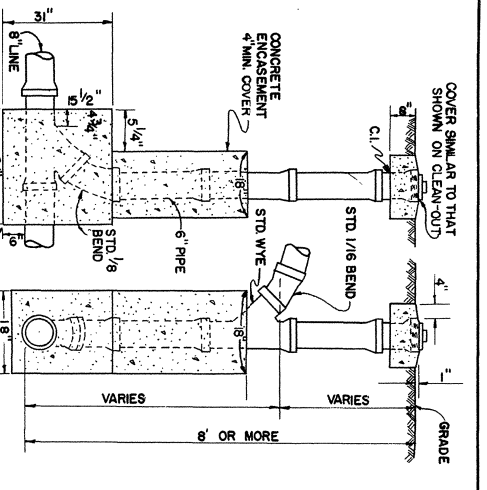
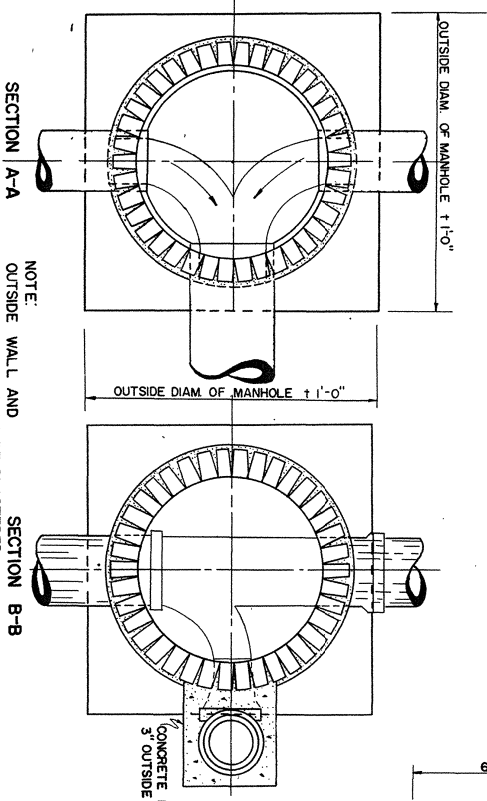


| | | |
|---------------|--------|-----------|
| STATE PROJECT | PARISH | SHEET NO. |
|---------------|--------|-----------|

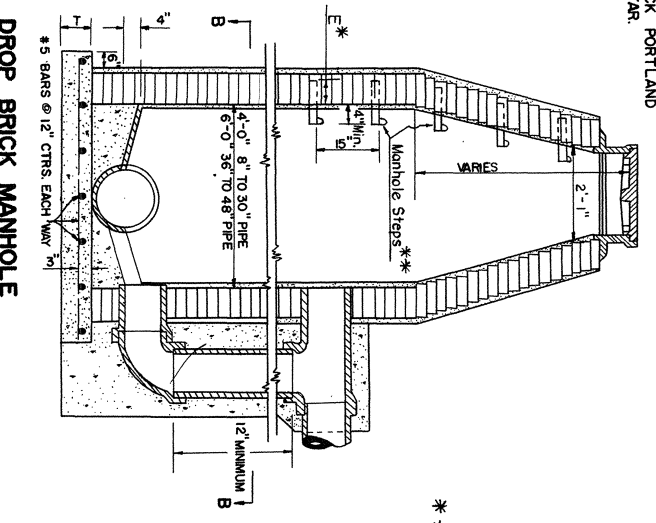
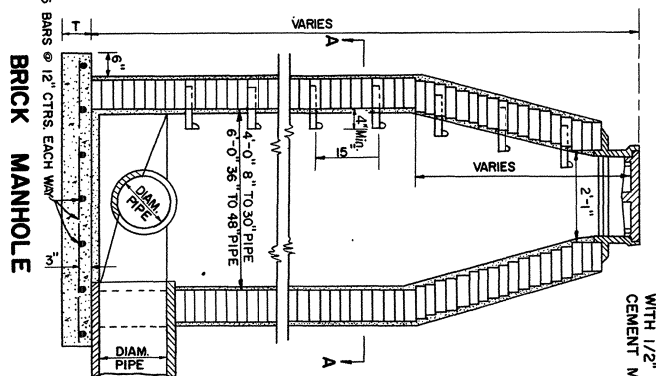
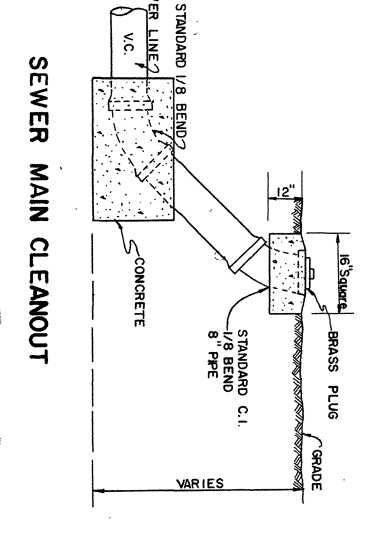
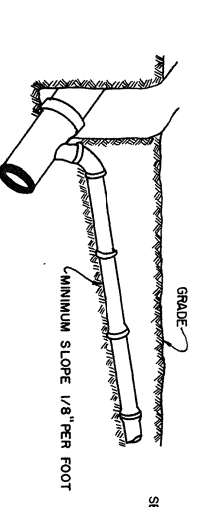
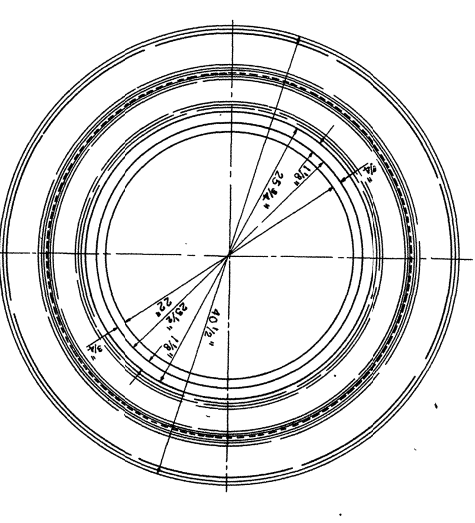


| WALL THICKNESS VARIES AS SHOWN | DEPTH |
|--------------------------------|----------|
| 6" Max. | 12" Max. |
| 8" | Over 12" |
| 9" | 12" |



NOTE:
OUTSIDE WALL AND INSIDE WALL TO BE PLASTERED WITH 1/2" THICK PORTLAND CEMENT MORTAR.

* * For Approved Manhole Steps, See L.D.H. Qualified Products List.
* E Dimension is Embedment of Manhole Steps; to be as specified on L.D.H. qualified Products List.



NOTES:
All Casting Shall Be A.S.T.M. A 48 Class 30, Type A Manhole Frame To Be Used Unless Otherwise Noted On The Plans.

APPROVED BY
Original Signed by Chief Engineer
CHIEF ENGINEER

R-CB-46
SANITARY SEWER AND BRICK MANHOLE DETAILS
STATE OF LOUISIANA
DEPARTMENT OF HIGHWAYS

| DATE | DESCRIPTION | BY | REVISIONS |
|--------|-------------|--------|-----------|
| 5-3-76 | M.H. Steps | W.F.L. | |
| | DESIGNED | W.E.M. | |
| | CHECKED | W.E.M. | |
| | DESIGNED | W.E.M. | |
| | CHECKED | W.E.M. | |
| | DESIGNED | W.E.M. | |
| | CHECKED | W.E.M. | |