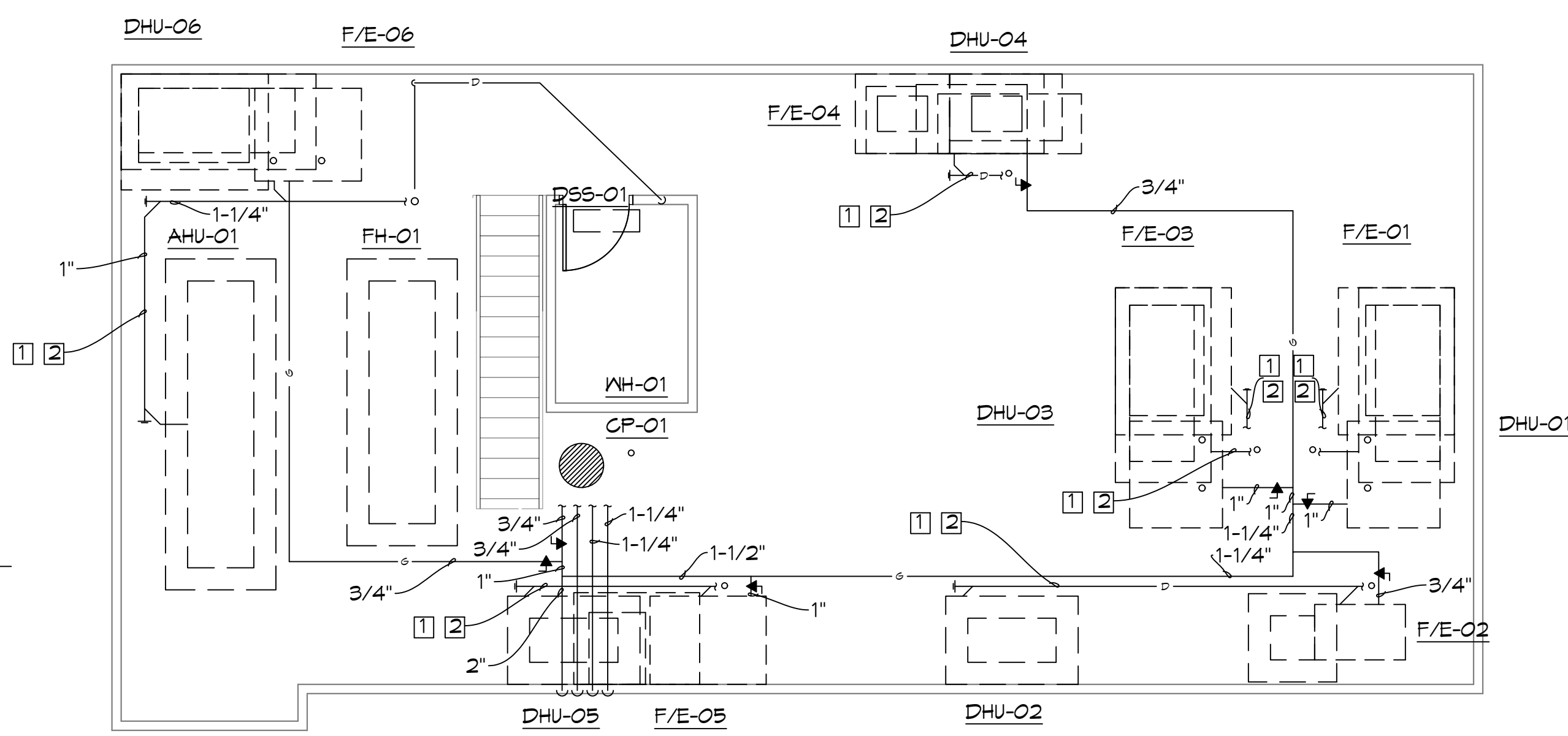


3 FIRST LEVEL WATER AND GAS PLAN
SCALE: 3/16" = 1'-0"



4 MEZZANINE WATER AND GAS PLAN
SCALE: 3/16" = 1'-0"

SPECIFIC WATER, GAS AND LABORATORY GAS NOTES #

- (SEE GENERAL PLUMBING NOTES FOR MORE INFORMATION)
1. TYPICAL SERVICE PIPING BELOW GRADE AT APPROXIMATELY THIS LOCATION. SEE CIVIL PLAN FOR CONTINUATION.
 2. EXTEND NEW FILL SIZE WATER HEADER PIPING HORIZONTALLY IN PLUMBING CHASES WITH BRANCH PIPING TO SERVE INDIVIDUAL FIXTURES SIZED PER PLUMBING FIXTURE ROUGH-IN SCHEDULE AND INCLUDING WATER HAMMER ARRESTERS.
 3. REDUCED PRESSURE BACKFLOW PREVENTER MOUNTED AT 160" A.F.F. WITH DRAIN TO OUTDOORS TO SPLASH BLOCK. SEE DETAIL.
 4. TYPICAL NEW GAS SERVICE PIPING ROUTED BELOW GRADE. VERIFY/COORDINATE WITH LOCAL SERVING UTILITY COMPANY. ALL COST AND COORDINATION SHALL BE BY THIS CONTRACTOR.
 5. GAS METER/REGULATOR PROVIDED BY SERVING UTILITY COMPANY. COST AND COORDINATION SHALL BE BY THIS CONTRACTOR. REGULATE 1100 CFH TO 2 PSI.
 6. LOW PRESSURE GAS PIPING (SIZE AS INDICATED) ROUTED UP IN EXTERIOR WALL AT APPROXIMATELY THIS LOCATION.
 7. GAS REGULATOR, CAPACITY AND PRESSURE AS INDICATED. SEE DETAIL FOR PIPING REQUIREMENTS.
 8. TYPICAL MEDICAL GAS WALL OUTLET. SEE PLAN FOR TYPE. COORDINATE ROUGH-IN LOCATION AND CONNECTION TYPE REQUIREMENT WITH LABORATORY EQUIPMENT SUPPLIER.
 9. LABORATORY GAS ALARM PANEL MOUNTED ON WALL AT 154" A.F.F. VERIFY MOUNTING LOCATION WITH ARCHITECT.
 10. CONNECT 1/2" HN FOR DISHWASHER TO SINK.

SPECIFIC MEZZANINE PLUMBING NOTES #

- (SEE GENERAL PLUMBING NOTES FOR MORE INFORMATION)
1. INSULATE CONDENSATE DRAIN AND/OR SANITARY WASTE PIPING, INCLUDING TRAP AND SANITARY WASTE PIPING IN APPLICATIONS WHERE CONDENSATE FROM AIR CONDITIONING UNITS AND/OR DEHUMIDIFIERS DISCHARGE. INSULATION SHALL EXTEND FROM ORIGIN POINT OF COLD CONDENSATE AND EXTEND CONTINUOUS TO SLAB ON GRADE PENETRATION. INSULATE PER SPECIFICATIONS FOR CONDENSATE DRAIN PIPING.
 2. EXTEND CONDENSATE DRAIN PIPING TO TRAPPED WASTE RECEPTOR. AS INDICATED HORIZONTAL MAINS TO BE 1-1/4" SIZE WITH MINIMUM 3/4" SIZE CONNECTIONS TO INDIVIDUAL UNITS.

ALL SANITARY SEWER ARE DIAGRAMMATICALLY DRAWN FOR CLARITY.

DAMMON ENGINEERING, INC.
LOUISIANA & MISSISSIPPI
www.dammonengineering.com
info@dammonengineering.com
PH: 985.649.8832
Chief Engineer: Brian March, PE
554 Old Spanish Trail
Stellat, LA 70458

REVISIONS	DATE

SEAL: **PROGRESS SET**

NEW MEDICAL OFFICE
DIANA OAK HARBOR REAL ESTATE LLC
140 OAK HARBOR BLVD
SULLY, LA 70458
JOB No: 2513 DATE: 06-03-2025
DRAWN BY: KCD CHECKED BY: JMS
SHEET TITLE: PLUMBING WATER AND GAS PLAN
DRAWING NUMBER: **01.1**