

**WIER BOERNER ALLIN**  
ARCHITECTURE

2727 OLD CANTON RD, SUITE 200  
JACKSON, MISSISSIPPI 39216

P:601.321.9107 F:601.321.9108

045 MADISON AVE.  
MADISON, MS 39110  
VOICE (601) 605-4820  
FAX (601) 605-4875  
TPS PROJ. # 17106

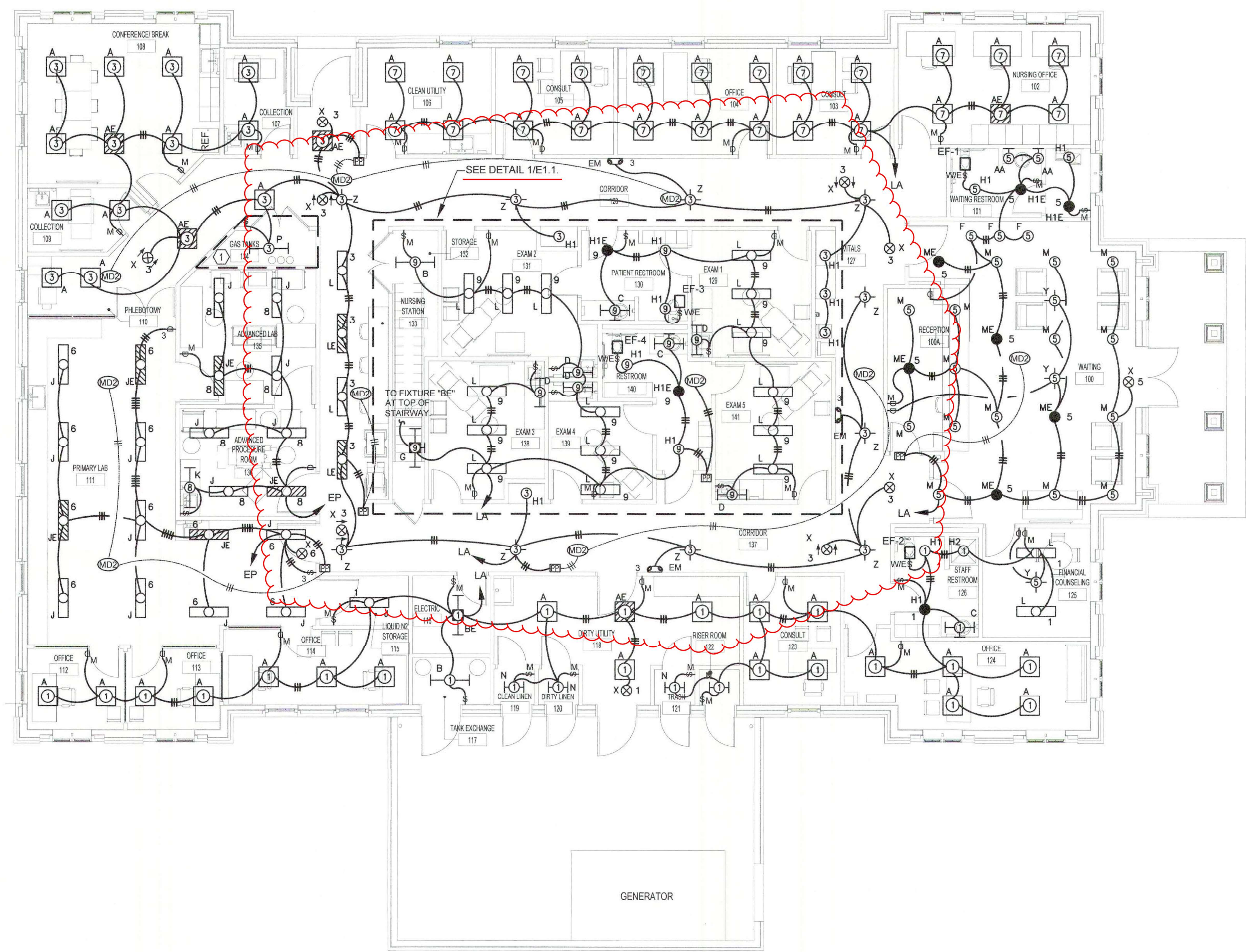


**FOUNTAINS  
DOCTOR'S OFFICE**

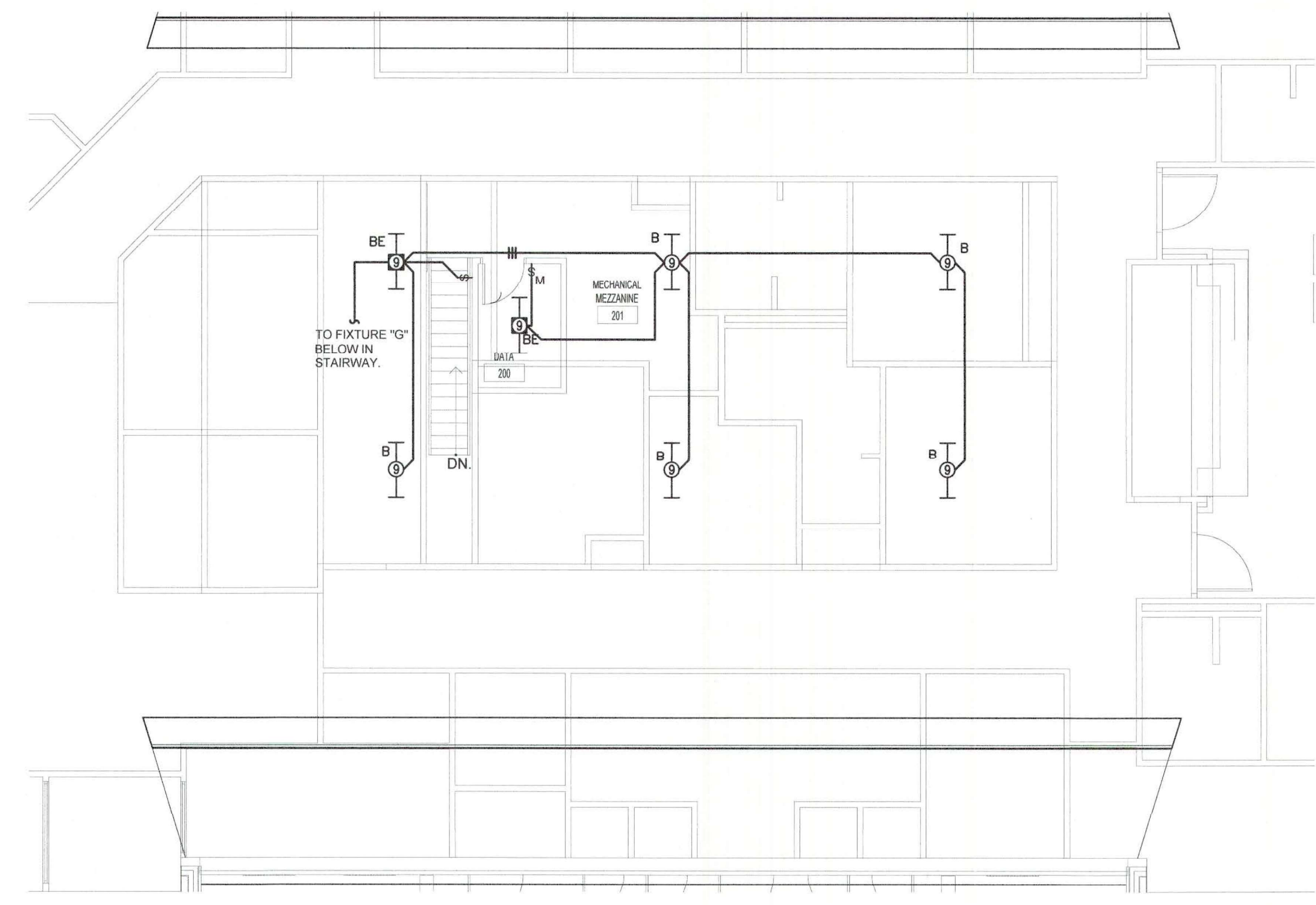
GENERAL CONTRACTOR:  
**PROBITY**

FOUNTAINS BLVD.  
MADISON, MS 39110

| Mark | Description  |
|------|--|
| ①    | USE GRS CONDUITS AND PROVIDE EXPLOSION PROOF FITTINGS FOR ALL CONNECTIONS IN GAS TANK STORAGE 134. |



① LIGHTING PLAN  
E1.0 Scale: 1/8" = 1'-0"



② LIGHTING PLAN - MEZZANINE  
E1.0 Scale: 1/8" = 1'-0"

SEPTEMBER 29, 2017  
CONSTRUCTION DOCUMENTS  
WBA #: 2217

| REVISIONS |             |      |
|-----------|-------------|------|
| NO.       | DESCRIPTION | DATE |
|           |             |      |

**E1.0**  
LIGHTING PLAN



945 MADISON AVE.  
MADISON, MS 39110  
VOICE (601) 605-4820  
FAX (601) 605-4875  
TPS PROJ. # 17105



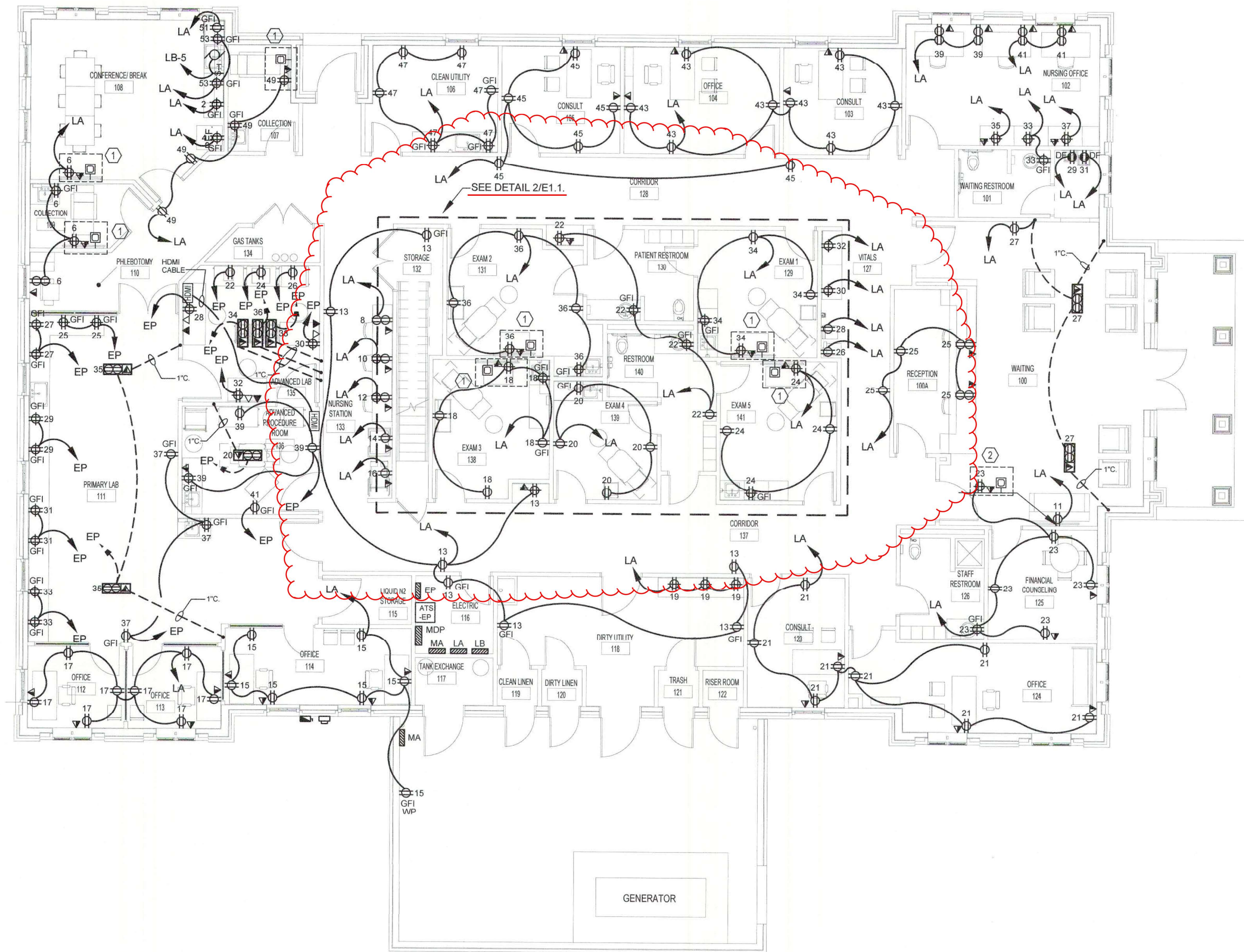
**FOUNDATIONS**  
**DOCTOR'S OFFICE**

GENERAL CONTRACTOR:  
**PROBITY**

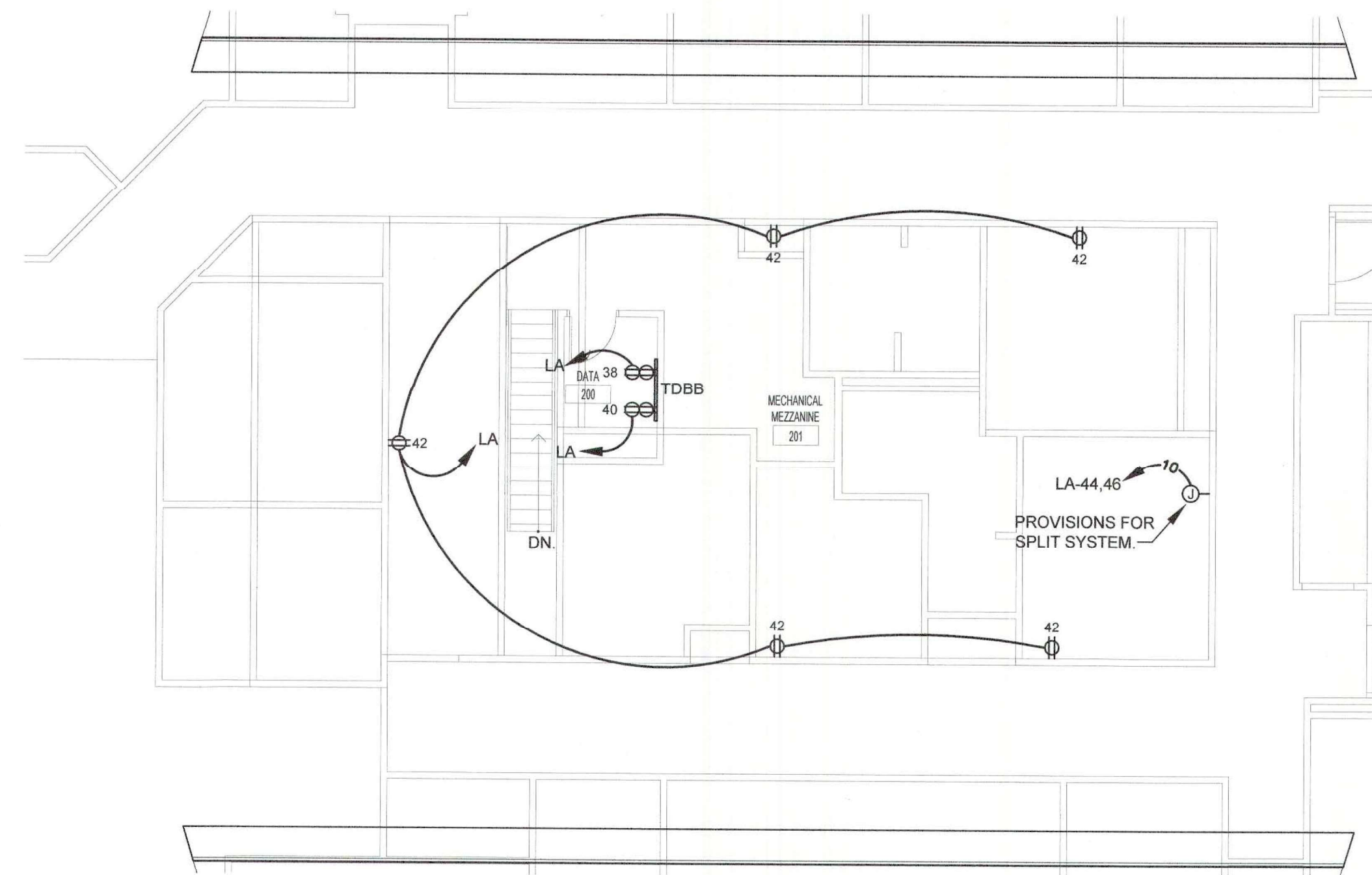
FOUNDATIONS BLVD.  
MADISON, MS 39110

| GENERAL NOTES |  |
|---------------|--|
| Mark          | Description  |
| A.            | INDIVIDUAL UPS FOR LAB EQUIPMENT PROVIDED BY OTHERS. |

| KEYED NOTES |   |
|-------------|---|
| Mark        | Description                                       |
| ①           | VERIFY MOUNTING WITH ARCHITECT PRIOR TO ROUGH-IN. |
| ②           | MOUNT 60" A.F.F.                                  |



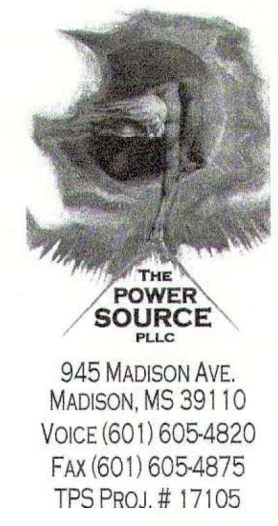
① POWER PLAN  
E2.0 Scale: 1/8" = 1'-0"



② POWER PLAN - MEZZANINE  
E2.0 Scale: 1/8" = 1'-0"

SEPTEMBER 29, 2017  
CONSTRUCTION DOCUMENTS  
WBA #: 2217

| REVISIONS |             |      |
|-----------|-------------|------|
| NO.       | DESCRIPTION | DATE |
|           |             |      |



945 MADISON AVE.  
MADISON, MS 39110  
VOICE (601) 605-4820  
FAX (601) 605-4675  
TPS PROJ. # 17105



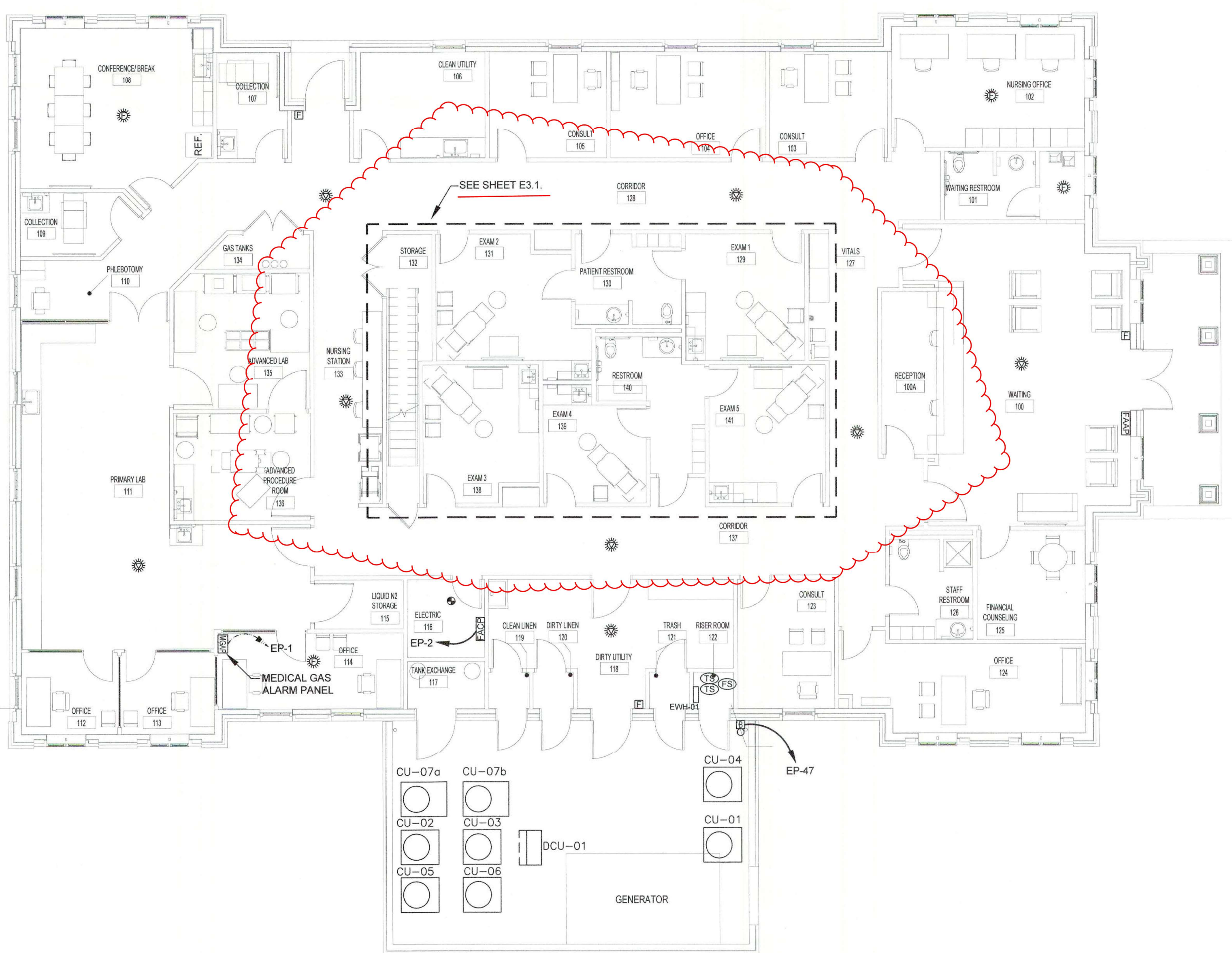
**FOUNTAINS DOCTOR'S OFFICE**

GENERAL CONTRACTOR:  
**PROBITY**

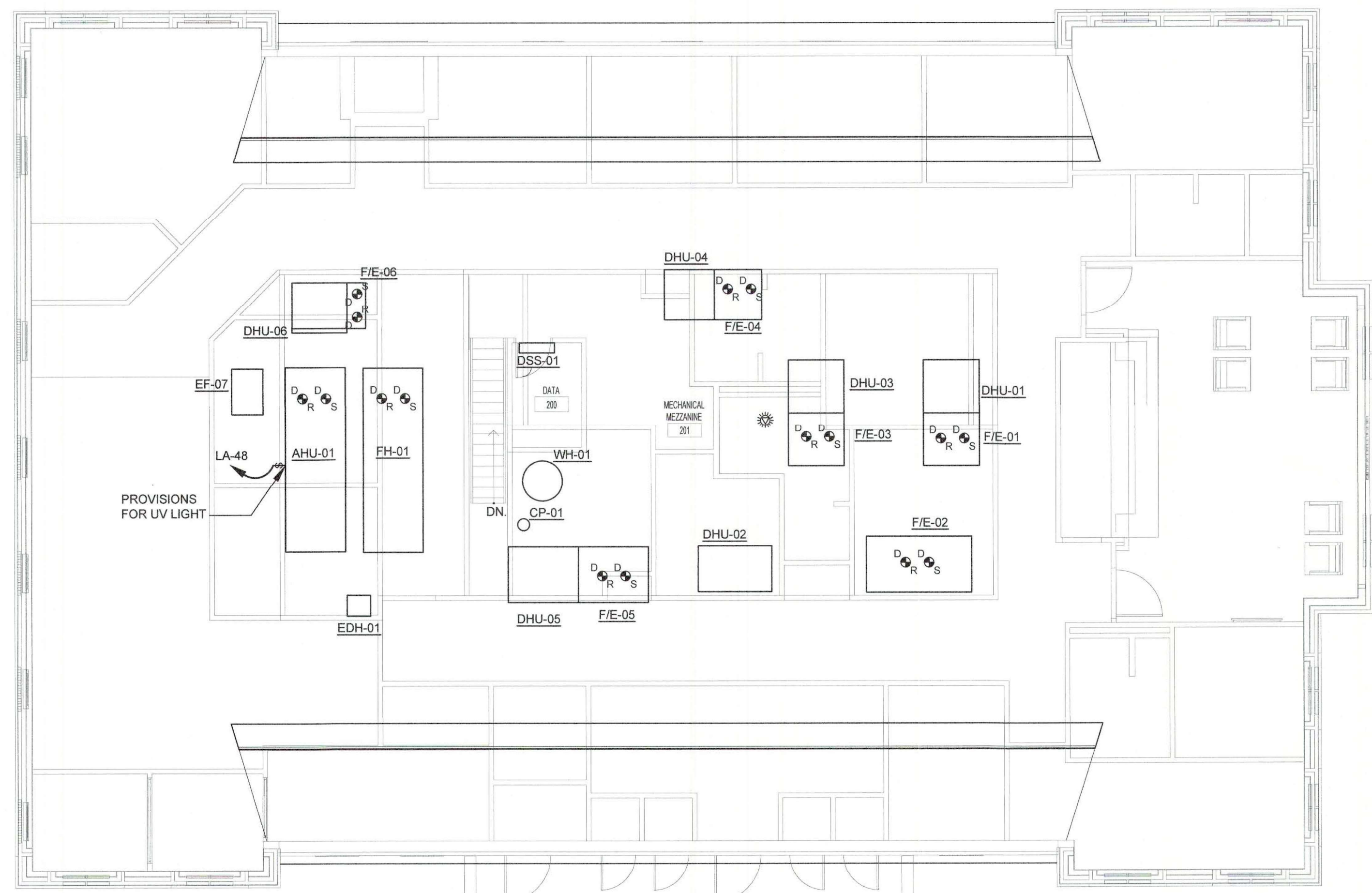
FOUNTAINS BLVD.  
MADISON, MS 39110

| MECHANICAL EQUIPMENT CONNECTIONS SCHEDULE |          |       |                      |                                       |                             |
|---|----------|-------|----------------------|---------------------------------------|-----------------------------|
| MARK                                      | VOLTAGE  | PANEL | CIRCUITRY            | LOCAL DISCONNECT                      | REMARKS                     |
| AHU-01                                    | 208V, 3Ø | EP    | 3#12, #12(G), 1/2"C. | 30/3/1                                |                             |
| CU-01                                     | 208V, 1Ø | MA    | 2#6, #10(G), 3/4"C.  | 60/2/3R                               |                             |
| CU-02                                     | 208V, 1Ø | MA    | 2#10, #10(G), 3/4"C. | 30/2/3R                               |                             |
| CU-03                                     | 208V, 1Ø | MA    | 2#6, #10(G), 3/4"C.  | 60/2/3R                               |                             |
| CU-04                                     | 208V, 1Ø | MA    | 2#12, #12(G), 1/2"C. | 30/2/3R                               |                             |
| CU-05                                     | 208V, 1Ø | MA    | 2#6, #10(G), 3/4"C.  | 60/2/3R                               |                             |
| CU-06                                     | 208V, 1Ø | MA    | 2#10, #10(G), 3/4"C. | 30/2/3R                               |                             |
| CU-07a                                    | 208V, 1Ø | EP    | 2#10, #10(G), 3/4"C. | 30/2/3R                               |                             |
| CU-07b                                    | 208V, 1Ø | EP    | 2#10, #10(G), 3/4"C. | 30/2/3R                               |                             |
| DCU-01                                    | 208V, 1Ø | MDP   | 2#12, #12(G), 1/2"C. | 30/2/3R                               | INTERLOCKED WITH DSS-01     |
| DSS-01                                    | 208V, 1Ø | MDP   | 2#12, #12(G), 1/2"C. | TWO POLE SWITCH (\$ <sup>PS</sup> )   | INTERLOCKED WITH DCU-01     |
| F/E-01                                    | 120V, 1Ø | LB    | 2#10, #10(G), 3/4"C. | MOTOR RATED SWITCH (\$ <sup>S</sup> ) |                             |
| F/E-02                                    | 120V, 1Ø | LB    | 2#10, #10(G), 3/4"C. | MOTOR RATED SWITCH (\$ <sup>S</sup> ) |                             |
| F/E-03                                    | 120V, 1Ø | LB    | 2#10, #10(G), 3/4"C. | MOTOR RATED SWITCH (\$ <sup>S</sup> ) |                             |
| F/E-04                                    | 120V, 1Ø | LB    | 2#12, #12(G), 1/2"C. | MOTOR RATED SWITCH (\$ <sup>S</sup> ) |                             |
| F/E-05                                    | 120V, 1Ø | LB    | 2#10, #10(G), 3/4"C. | MOTOR RATED SWITCH (\$ <sup>S</sup> ) |                             |
| F/E-06                                    | 120V, 1Ø | LB    | 2#10, #10(G), 3/4"C. | MOTOR RATED SWITCH (\$ <sup>S</sup> ) |                             |
| DH-01                                     | 120V, 1Ø | LB    | 2#12, #12(G), 1/2"C. | NEMA 5-20R                            |                             |
| DH-02                                     | 120V, 1Ø | LB    | 2#12, #12(G), 1/2"C. | NEMA 5-20R                            |                             |
| DH-03                                     | 120V, 1Ø | LB    | 2#12, #12(G), 1/2"C. | NEMA 5-20R                            |                             |
| DH-04                                     | 120V, 1Ø | LB    | 2#12, #12(G), 1/2"C. | NEMA 5-20R                            |                             |
| DH-05                                     | 120V, 1Ø | LB    | 2#12, #12(G), 1/2"C. | NEMA 5-20R                            |                             |
| DH-06                                     | 120V, 1Ø | LB    | 2#12, #12(G), 1/2"C. | NEMA 5-20R                            |                             |
| EMH-01                                    | 208V, 1Ø | MA    | 2#12, #12(G), 1/2"C. | TWO POLE SWITCH (\$ <sup>PS</sup> )   |                             |
| EF-01                                     | 120V, 1Ø | LA    | 2#12, #12(G), 1/2"C. | PROVIDED WITH EQUIPMENT               | INTERLOCKED WITH LIGHTS     |
| EF-02                                     | 120V, 1Ø | LA    | 2#12, #12(G), 1/2"C. | PROVIDED WITH EQUIPMENT               | INTERLOCKED WITH LIGHTS     |
| EF-03                                     | 120V, 1Ø | LA    | 2#12, #12(G), 1/2"C. | PROVIDED WITH EQUIPMENT               | INTERLOCKED WITH LIGHTS     |
| EF-04                                     | 120V, 1Ø | LA    | 2#12, #12(G), 1/2"C. | PROVIDED WITH EQUIPMENT               | INTERLOCKED WITH LIGHTS     |
| EF-05                                     | 120V, 1Ø | EP    | 2#12, #12(G), 1/2"C. | PROVIDED WITH EQUIPMENT               | INTERLOCKED WITH AHU-01     |
| EF-06                                     | 120V, 1Ø | EP    | 2#12, #12(G), 1/2"C. | PROVIDED WITH EQUIPMENT               | INTERLOCKED WITH AHU-01     |
| EF-07                                     | 120V, 1Ø | LB    | 2#12, #12(G), 1/2"C. | PROVIDED WITH EQUIPMENT               | INTERLOCKED WITH EMS SYSTEM |
| FH-01                                     | 208V, 1Ø | EP    | 2#12, #12(G), 1/2"C. | TWO POLE SWITCH (\$ <sup>PS</sup> )   | INTERLOCKED WITH EMS SYSTEM |
| FDH-01                                    | 208V, 1Ø | EP    | 2#1, #6(G), 1-1/4"C. | 100/2/1                               |                             |
| CP-01                                     | 120V, 1Ø | LB    | 2#12, #12(G), 1/2"C. | 30/1/1                                |                             |
| WH-01                                     | 120V, 1Ø | LB    | 2#12, #12(G), 1/2"C. | 5-20R                                 |                             |

General Note 1: Prior to submitting electrical equipment brochures, the Contractor shall verify location, actual equipment submittal data and adjust equipment services accordingly.  
Note A: Cord and Plug provided by mechanical contractor and installed by electrical contractor.



**1**  
E3.0 MECHANICAL/AUXILIARY PLAN  
Scale: 1/8" = 1'-0"



**2**  
E3.0 MECHANICAL/AUXILIARY PLAN - MEZZANINE  
Scale: 1/8" = 1'-0"

SEPTEMBER 29, 2017  
CONSTRUCTION DOCUMENTS  
WBA #: 2217

| REVISIONS |             |      |
|-----------|-------------|------|
| NO.       | DESCRIPTION | DATE |
|           |             |      |