

Dammon Engineering, Inc.  
554 Old Spanish Trail  
Slidell, LA 70458  
David Dammon

Invoice number 93752001-00001  
Date 04/02/2025

Project 93752001 - FORMER PSL NORTH  
AMERICA SITE, PEARLINGTON MS

Professional Services through: March 31, 2025

**Payment Terms: Due upon receipt**

Description	Contract Amount	Percent Complete	Prior Billed	Total Billed	Current Billed
<b>Topo Survey</b>	7,500.00	100.00	0.00	7,500.00	7,500.00
<b>UAS Image</b>	1,500.00	100.00	0.00	1,500.00	1,500.00
<b>Total</b>	<b>9,000.00</b>	<b>100.00</b>	<b>0.00</b>	<b>9,000.00</b>	<b>9,000.00</b>

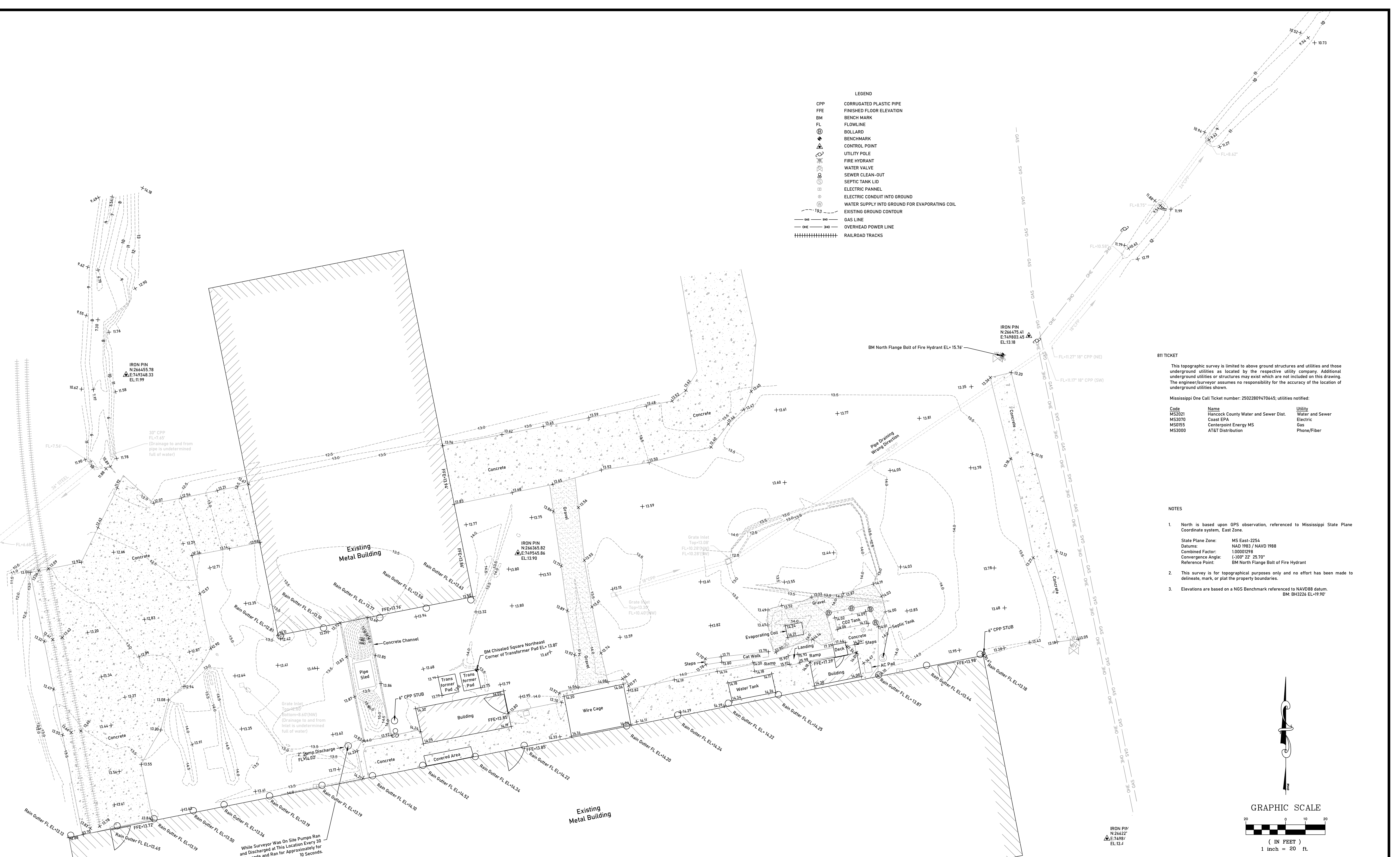
Invoice total 9,000.00

Approved by:

John C. Anglin  
Principal

**LEGEND**

CPP	CORRUGATED PLASTIC PIPE
FFE	FINISHED FLOOR ELEVATION
BM	BENCH MARK
FL	FLOWLINE
⊕	BOLLARD
⊕	BENCHMARK
⊕	CONTROL POINT
⊕	UTILITY POLE
⊕	FIRE HYDRANT
⊕	WATER VALVE
⊕	SEWER CLEAN-OUT
⊕	SEPTIC TANK LID
⊕	ELECTRIC PANEL
⊕	ELECTRIC CONDUIT INTO GROUND
⊕	WATER SUPPLY INTO GROUND FOR EVAPORATING COIL
---	EXISTING GROUND CONTOUR
---	GAS LINE
---	OVERHEAD POWER LINE
	RAILROAD TRACKS



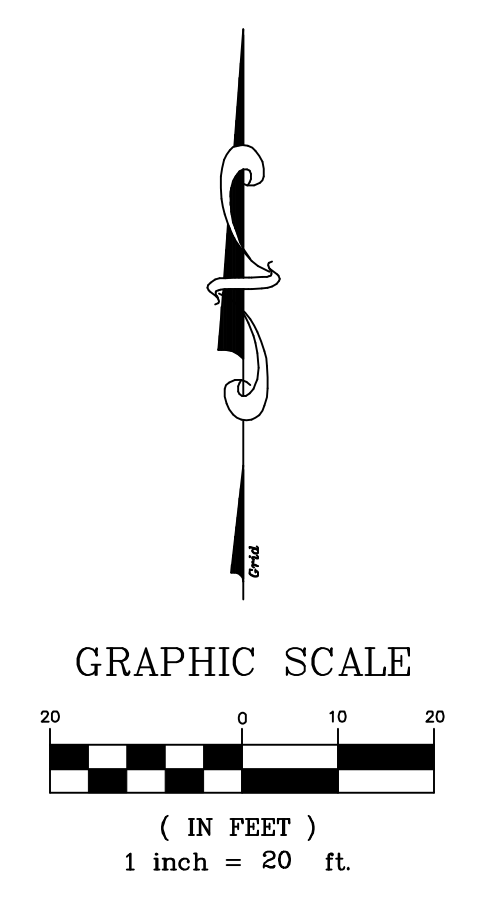
**811 TICKET**

This topographic survey is limited to above ground structures and utilities and those underground utilities as located by the respective utility company. Additional underground utilities or structures may exist which are not included on this drawing. The engineer/surveyor assumes no responsibility for the accuracy of the location of underground utilities shown.

Mississippi One Call Ticket number: 25022809470645; utilities notified:

Code	Name	Utility
MS2021	Hancock County Water and Sewer Dist.	Water and Sewer
MS3070	Coast EPA	Electric
MS0155	Centerpoint Energy MS	Gas
MS3000	AT&T Distribution	Phone/Fiber

- NOTES**
- North is based upon GPS observation, referenced to Mississippi State Plane Coordinate system, East Zone.  
State Plane Zone: MS East-2254  
Datums: NAD 1983 / NAVD 1988  
Combined Factor: 1.00001298  
Convergence Angle: (-)00° 22' 25.70"  
Reference Point: BM North Flange Bolt of Fire Hydrant
  - This survey is for topographical purposes only and no effort has been made to delineate, mark, or plat the property boundaries.
  - Elevations are based on a NGS Benchmark referenced to NAVD88 datum.  
BM: BH3226 EL=19.90'



Sheet Size: 24"x36"  
**S1**  
SHEET NO.

**Topographic survey**  
13092 Seaplane Road, Bay St. Louis, Mississippi, 39520

PREPARED FOR:  
**Dammon Engineering**

**CE CLEARPOINT ENGINEERS**  
1051 Jackson Road | Hattiesburg, MS 39402  
t 601.261.2609 | clearpointengineers.com

CAD FILE: 93752001 Draft.dwg  
CCE PROJ.: 93752001  
SCALE: 1"=20'  
SURVEYED: March 11, 2025  
SURVEYED BY: R.A.  
DRAWN BY: R.D.

While Surveyor Was On Site Pumps Ran and Discharged at This Location Every 30 Seconds and Ran for Approximately for 10 Seconds



Vicinity Map  
NOT TO SCALE



LEGEND

CPP	CORRUGATED PLASTIC PIPE
FFE	FINISHED FLOOR ELEVATION
BM	BENCH MARK
FL	FLOWLINE
⊙	BOLLARD
⊙	BENCHMARK
⊙	CONTROL POINT
⊙	UTILITY POLE
⊙	FIRE HYDRANT
⊙	WATER VALVE
⊙	SEWER CLEAN-OUT
⊙	SEPTIC TANK LID
⊙	ELECTRIC PANEL
⊙	ELECTRIC CONDUIT INTO GROUND
⊙	WATER SUPPLY INTO GROUND FOR EVAPORATING COIL
---	EXISTING GROUND CONTOUR
---	GAS LINE
---	OVERHEAD POWER LINE
	RAILROAD TRACKS

What does this contour line represent? You show FFE of 13.76' and 13.86'

I believe there is a drive, maybe not paved but still a drive here?

I see this. Wow big drop backwards

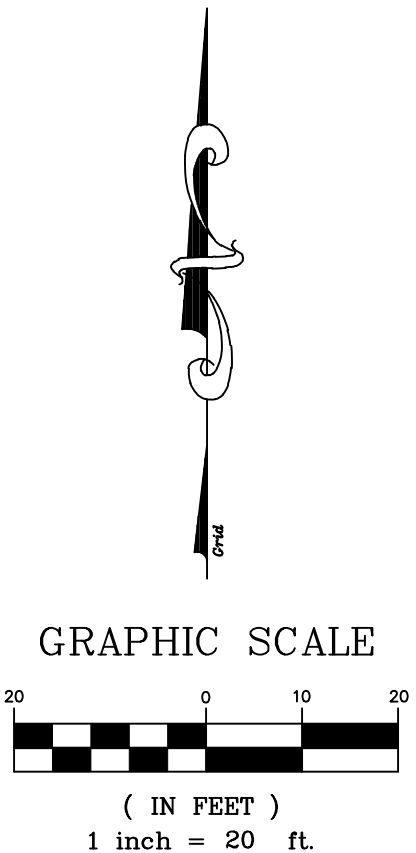
811 TICKET

This topographic survey is limited to above ground structures and utilities and those underground utilities as located by the respective utility company. Additional underground utilities or structures may exist which are not included on this drawing. The engineer/surveyor assumes no responsibility for the accuracy of the location of underground utilities shown.

Mississippi One Call Ticket number: 25022809470645; utilities notified:

Code	Name	Utility
MS2021	Hancock County Water and Sewer Dist.	Water and Sewer
MS3070	Coast EPA	Electric
MS0155	Centerpoint Energy MS	Gas
MS3000	AT&T Distribution	Phone/Fiber

- NOTES
- North is based upon GPS observation, referenced to Mississippi State Plane Coordinate system, East Zone.  
State Plane Zone: MS East-2254  
Datum: NAD 1983 / NAVD 1988  
Combined Factor: 1.00001298  
Convergence Angle: (-)00° 22' 25.70"  
Reference Point: BM North Flange Bolt of Fire Hydrant
  - This survey is for topographical purposes only and no effort has been made to delineate, mark, or plat the property boundaries.
  - Elevations are based on a NGS Benchmark referenced to NAVD88 datum. BM: BH3226 EL=19.90'



Sheet Size: 24"x36"  
**S1**  
SHEET NO.

**Topographic survey**  
13092 Seaplane Road, Bay ST. Louis, Mississippi, 39520

PREPARED FOR:  
**Dammon Engineering**

**CE CLEARPOINT ENGINEERS**  
1051 Jackson Road | Hattiesburg, MS 39402  
t 601.261.2609 | clearpointengineers.com

**DRAFT**

CAD FILE: 93752001.dwg  
CCE PROJ.: 93752001  
SCALE: 1"=20'  
SURVEYED: March 11, 2025  
SURVEYED BY: R.A.  
DRAWN BY: R.D.

While Surveyor Was On Site Pumps Ran and Discharged at This Location Every 30 Seconds and Ran for Approximately for 10 Seconds